



THE
BURNETTS

Gulf Coast/Creole Cottage Thematic Nominatio

Baldwin County, Alabama

Orrell-Burnette House/Bon Secour

John Sledge, photographer

July 1987

MHDC negative file BA 124/1

Facade, camera facing n.

1 of 9



Gulf Coast/Creole Cottage Thematic Nomination

Baldwin County, Alabama

Orrell-Burnette House/Bon Secour

John Sledge, photographer

July 1987

MHDC negative file BA #124/3

General, camera facing ne.

2 of 9



Gulf Coast/Creole Cottage Thematic Nomination

Baldwin County, Alabama

Orrell-Burnette House/Bon Secour

John Sledge, photographer

July 1987

MHDC negative file=BA #124/5

Side, camera facing e.

3 of 9



Gulf Coast/Creole Cottage Thematic Nomination

Baldwin County, Alabama

Orrell-Burnette House/Bon Secour

John Sledge, photographer

July 1987

MHDC negative file BA #124/77

Rear, camera facing se.

4 of 9



Gulf Coast/Creole Cottage Thematic Nomination

Baldwin County, Alabama

Orrell-Burnette House/Bon Secour

John Sledge, photographer

July 1987

MHDC negative file BA #124/10

Side, camera facing sw.

5 of 9



Gulf Coast/Creole Cottage Thematic Nomination

Baldwin County, Alabama

Orrell-Burnette House/Bon Secour

John Sledge, photographer

July 1987

MHDC negative file BA #124/18

Interior, hall and stair, camera facing n.

6 of 9



Gulf Coast/Creole Cottage Thematic Nomination

Baldwin County, Alabama

Orrell-Burnette House/Bon Secour

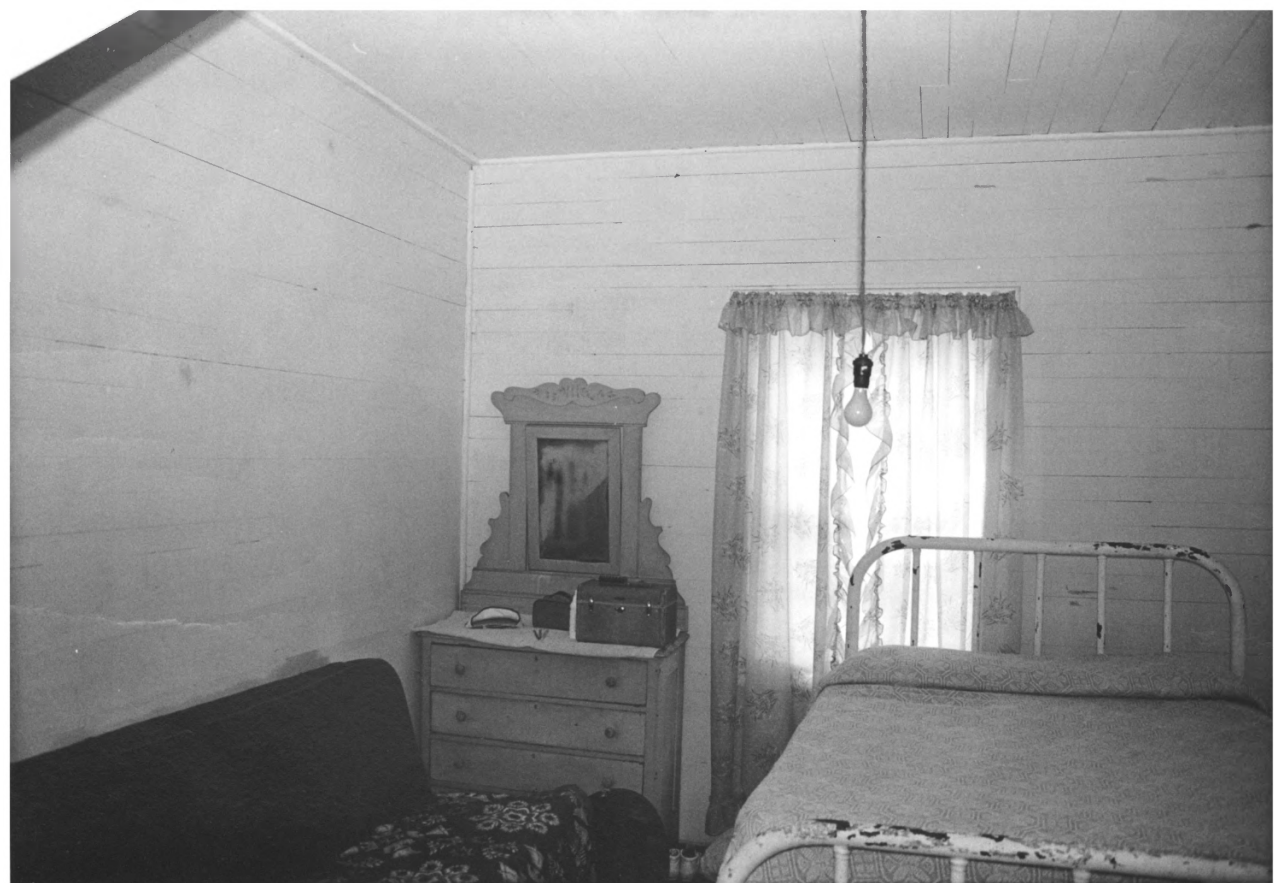
John Sledge, photographer

July 1987

MHDC negative file BA #124/28

Interior, southeast front room, camera
facing e.

7 of 9



Gulf Coast/Creole Cottage Thematic Nomination

Baldwin County, Alabama

Orrell-Burnette House/Bon Secour

John Sledge, photographer

July 1987

MHDC negative file BA #124/22

Interior, northwest rear room, camera
facing sw.

8 of 9



Gulf Coast/Creole Cottage Thematic Nomination

Baldwin County, Alabama

Orrell-Burnette House/Bon Secour

John Sledge, photographer

July 1987

MHDC negative file BA #124/19

Interior, half story, camera facing se.

9 of 9