

1106

United States Department of the Interior National Park Service

National Register of Historic Places Registration Form

100-1501 NATIONAL REGISTER

This form is for use in nominating or requesting determinations of eligibility for individual properties or districts. See instructions in Guidelines for Completing National Register Forms (National Register Bulletin 16). Complete each item by marking "x" in the appropriate box or by entering the requested information. If an item does not apply to the property being documented, enter "N/A" for "not applicable." For functions, styles, materials, and areas of significance, enter only the categories and subcategories listed in the instructions. For additional space use continuation sheets (Form 10-900a). Type all entries.

1. Name of Property

historic name Lakeville High School other names/site number 141-339-11503

2. Location

street & number 601 North Michigan Street N/A not for publication city, town Lakeville N/A vicinity state IN code IN county St. Joseph code 141 zip code 46526

3. Classification

Table with 3 columns: Ownership of Property (private checked), Category of Property (building checked), and Number of Resources within Property (Contributing: 1, Noncontributing: 0 buildings, 0 sites, 0 structures, 0 objects, Total: 1).

Name of related multiple property listing: N/A

Number of contributing resources previously listed in the National Register 0

4. State/Federal Agency Certification

As the designated authority under the National Historic Preservation Act of 1966, as amended, I hereby certify that this nomination request for determination of eligibility meets the documentation standards for registering properties in the National Register of Historic Places and meets the procedural and professional requirements set forth in 36 CFR Part 60. In my opinion, the property meets does not meet the National Register criteria. See continuation sheet. Signature of certifying official: Patrick R. Roberts, Indiana Department of Natural Resources, Date: 7-23-91

In my opinion, the property meets does not meet the National Register criteria. See continuation sheet. Signature of commenting or other official: State or Federal agency and bureau:

5. National Park Service Certification

I, hereby, certify that this property is: entered in the National Register. See continuation sheet. determined eligible for the National Register. See continuation sheet. determined not eligible for the National Register. removed from the National Register. other, (explain): Signature of the Keeper: Melores Byers, Date of Action: 8/29/91

[X] See continuation sheet

6. Function or Use

Historic Functions (enter categories from instructions)

EDUCATION: school

Current Functions (enter categories from instructions)

WORK IN PROGRESS

7. Description

Architectural Classification
(enter categories from instructions)

Late Gothic Revival

Materials (enter categories from instructions)

foundation CONCRETE

walls BRICK

STONE: limestone

roof ASPHALT

other

Describe present and historic physical appearance.

Lakeville High School, constructed in 1931, is located on the west side of U.S. 31 South (Michigan street) just north of the town of Lakeville. It is a two story, brick structure with simple Collegiate Gothic details and a flat roof with a surrounding brick and stone parapet wall. The brick pattern of all exterior walls is stretcher bond brick; the foundation is concrete.

A central axis bisects the building, reflected in the near perfect symmetry of the floor plan and facades. This east/west axis is accentuated by the centered main entry bay which projects forth from the wall mass of the main facade. A perpendicular cross axis is articulated with similar entry bays. The overall footprint of the building is a "T" plan: an auditorium/gymnasium projects off the principle rectangle at the west or rear facade.

The front facade gives the impression of a central tower flanked by two long wings ending in towers of similar proportion; i.e., the wall projects at the center and corners. The corner towers have staggered stone quoins and stone tablets with bas relief shields and tassels in the region of the roof line parapet. The tablet at the central bay has an open book adorning its shield. Another stone detail is the inscription "Lakeville High School" that appears in bas relief calligraphy above the central entry. Also, a continuous stone string course runs along the header line of the second story windows.

The front entry/central bay is flanked by brick buttresses with stone weatherings; the parapet wall steps up at its crown. The entry opening is a lancet arch cut in stone block and is articulated with a hood mold, sloped stone reveals, and paired metal doors with a transom light divided down the middle.

Aluminum double hung sashes with blind transoms occur in pairs at projecting bays and in rows in between. Windows are articulated with a hood mold, sloped stone reveals, and paired metal doors with a transom light divided down the middle.

The structure's side elevations (north and south facades) are mirror images of each other. They are comprised of a front section, i.e., the width of the primary building mass, and rear section, i.e., the width of

See continuation sheet

8. Statement of Significance

Certifying official has considered the significance of this property in relation to other properties:

nationally statewide locally

Applicable National Register Criteria A B C D

Criteria Considerations (Exceptions) A B C D E F G

Areas of Significance (enter categories from instructions)

EDUCATION
ARCHITECTURE

Period of Significance

1931-1941

Significant Dates

1931

Cultural Affiliation

N/A

Significant Person

N/A

Architect/Builder

Miller, Hubert

State significance of property, and justify criteria, criteria considerations, and areas and periods of significance noted above.

Lakeville High School meets Criteria A and C in the areas of architecture and education. Completed in 1931, it is the most intact consolidated high school in St. Joseph County. The school is therefore a significant reminder of an important phase of public education in St. Joseph County and Union Township. The high integrity and Collegiate Gothic style of the building make it architecturally noteworthy.

Prior to the 1890s, most of Indiana's public schools operated under the district school system. Although authorized under the acts which established the Old Northwest Territory in 1785-7, it was an act by the Indiana Legislature in 1824 which organized the district school system. The district system created a number of small schools in each township of established counties. Trustees administered the schools of a township, and reported to a county examiner, who in turn reported to the State Superintendent of Public Education. The system was highly decentralized, and well suited to an era of high rural populations and poor roads. This system was bolstered by State Legislation in 1867 and 1873, and remained dominant until the 1890s.

By that time, Indiana's rural population was sharply decreasing, and many districts had but a few children in attendance. State Superintendent David Geeting first called for the centralization of rural schools in 1898. Geeting cited graded schools, better teachers, improved buildings, and long-term cost reductions to local school systems as advantages of school consolidation (Report of the Superintendent of Public Instruction, 1897-8, p. 35).

Although Geeting's essay was apparently the first public call to consolidate rural schools, forty counties had already started this process (Report, 1897-8, p.529). State Superintendent from 1903-9 was Fassett Cotton. He aggressively pursued and promoted consolidation. Cotton was equally interested in promoting secondary education. Public high schools had existed in Indiana since the 1850s, but were essentially shut down by an 1858 court ruling forbidding taxation for public education.

See continuation sheet

9. Major Bibliographical References

Barnhart, John D., Ph.D. and Carmody, Donald F. Ph.D. Indiana; From Frontier to Industrial Commonwealth. New York: Lewis Historical Publishing Company, 1954, Vol. II, "Establishment of the Common-School System."

Boone, Richard G. A History of Education in Indiana. New York: D. Appleton & Company, 1892.

Cotton, Fassett. Education in Indiana, 1793-1934. Bluffton, IN: Progress Publishing Company, 1934.

Cotton, Fassett. "The Township High School in Indiana," The School Review, Vol. XII, No. 4, April, 1904.

See continuation sheet

Previous documentation on file (NPS):

- preliminary determination of individual listing (36 CFR 67) has been requested
- previously listed in the National Register
- previously determined eligible by the National Register
- designated a National Historic Landmark
- recorded by Historic American Buildings Survey # _____
- recorded by Historic American Engineering Record # _____

Primary location of additional data:

- State historic preservation office
- Other State agency
- Federal agency
- Local government
- University
- Other

Specify repository:

Indiana Historic Sites & Structures Inventory

10. Geographical Data

Acreage of property Less than one acre

UTM References

A 16 560600 4597750
 Zone Easting Northing

C

B
 Zone Easting Northing

D

See continuation sheet

Verbal Boundary Description - A parcel of land in the southeast quarter (SE $\frac{1}{4}$) of the northeast quarter (NE $\frac{1}{4}$) of section thirty-four (34), township thirty-six (36), north range two (2) east, bounded by a line running as follows:

Beginning at a point twenty (20) feet south and twenty (20) feet east of the southeast (SE) corner of the building and running west for two hundred

See continuation sheet

Boundary Justification

The boundary includes only the historic 1931 school and not later additions which used to be connected to it.

See continuation sheet

11. Form Prepared By

name/title George Myers

organization Old Lakeville School project date August 31, 1990

street & number 21320 Surface Avenue telephone 219-784-3152

city or town Lakeville state IN zip code 46536

United States Department of the Interior
National Park Service

National Register of Historic Places Continuation Sheet

Section number 7 Page 1 Lakeville High School

the auditorium/gymnasium. Two story high blind brick panels occur on each elevation near their junction with the main facade. Also, the north and south faces of the auditorium/gymnasium are articulated by full length pilaster/buttresses (four per side). The parapet wall around the auditorium/gymnasium roof is capped by clay piping rather than the stone found on the parapet of the principle building mass.

The side elevations are sparsely fenestrated. Projecting entry bays similar in shape and detail to the main entry bay (with lancet arch openings and paired sashes) occur centrally along the north/south axis of principle building mass. Aside from this, there are no openings. Four large windows in the auditorium/gymnasium (two per side) have been bricked in (summer 1990).

The auditorium/gymnasium is the dominant element of the rear or west elevation. It projects forward from the primary building mass along the central bisecting axis and comprises half the length of the rear elevation. A central square bay coinciding with a stage in its interior comprises half of its own face. A flush brick chimney occurs at the north-west storage sheds, are also located around this projection. The only openings at the rear facade are two entry doors which flank the auditorium/gymnasium and give access to the principle building mass.

The major spaces of the interior are hallways, classrooms, and the auditorium/gymnasium. The hallways, accessed directly from the accented front and side entries, lie along the central and cross axes mentioned above. Between the front entry and the central hallway is a vestibule with a foyer screen comprised of a wood frame with multi-pane transom and side lights. The doors to this screen, most probably wood with multi-pane glazing, have been removed. The central hallway terminates at its intersection with the hallway lying along the cross axis. This cross axis hallway terminates in a flight of stairs and an entry/exit on both ends. The stairs are interrupted midflight by a landing with window wells; it is under these landings that the entry/exits are located.

United States Department of the Interior
National Park Service

National Register of Historic Places Continuation Sheet

Section number 7 Page 2 Lakeville High School

The hallways are approximately ten feet wide and have terrazzo floors. The walls are plaster with 4' high stretcher bond brick wainscoating or metal locker rows of the same height. Where occasional waterfountains occur, the wainscoating is interrupted by a blind brick arch slightly inset into the wall. The cross axis hallway on the second floor is nearly identical to that on the first.

Classrooms are located for the most part on the east side of the cross axis hallways. Entries to the classrooms have wood doors with multi-pane glazing and transom lights. The entry to the north-eastern classroom on the first floor is double leaved. Classroom floors are made of 1" interlocking maple floor boards. As in the hallways, illumination is from fluorescent lamps. The heating is via steam coil radiators.

Some partition walls, not necessarily original, have been removed to integrate rooms (see plans).

The primary space on the west side of the cross axis hallway is the auditorium/gymnasium space. Access to this space is not off the central hallway; two double leaved entries (doors not original) off the cross axis hallway break the partition wall into thirds. The space is two stories high, has similar flooring to the classroom spaces; the walls are brick; the ceiling has steel truss supports. An elevated stage is inset into the rear (west) wall.

Restrooms flank the auditorium/gymnasium on the first level; classrooms flank the space on the second level.

A shallow lawn (approximately 20' wide) with several trees runs between the building site and U. S. 31, a two lane federal highway. New walkways and driveways are currently being installed. Three interconnected one story units sit directly south of the main building. Constructed in 1956, these units were originally used as elementary education facilities. They are brick structures, have gabled roofs with wide overhangs and finished purlin ends, and were attached to the main building at the south entrance by an enclosed breezeway until recently. They are now separate buildings completely and are not part of this nomination.

United States Department of the Interior
National Park Service

National Register of Historic Places Continuation Sheet

Section number 8 Page 1 Lakeville High School

High schools were reinstated in 1867 by state law. Only larger towns had the resources to develop high schools, however. Backers of consolidation argued that bringing districts together would allow entire townships to have high schools. Ideally, there was to be one high school per township. By 1908, 507 public high schools existed in Indiana.

State Legislation passed 1897 (compulsary education); 1899 (free transportation, consolidation); and 1907 greatly furthered consolidation. The 1907 law called for discontinuation of small school districts, "legalized" high schools, and required townships to build high schools or send students of age to neighboring high schools. Also during this period, the state began to commission high schools. Commissioned schools met certain standards, and in return, graduates were guaranteed admission to several major universities in the state.

Although educational reform had long been a concern of Hoosiers statewide, the issue was given much public attention in 1920 when a study published by the New York based Russell Sage Foundation ranked Indiana 17th in the nation in quality of education (Madison, p. 265). As a result of widespread chagrin over this study, the Indiana Educational Survey Committee was created to investigate the causes of the state's educational shortcomings (that a ranking of 17th out of 48 states, or in roughly the top third of the nation, could cause such concern is surely indicative of the determination of Hoosiers for excellence).

The committee soon embarked upon a thorough fact-gathering mission visiting rural and city schools all over the state. Their findings included their conclusion that much of the problem stemmed from the rural sector. Dilapidated, one-teacher schoolhouses staffed by underpaid and under educated teachers were cited as a major cause of the poor quality education that rural Indiana children were receiving (Madison, p. 267). Improvements in building, training and curriculum were called for and the most economical way to accomplish these objectives was through school consolidation; a movement away from local school government by a township trustee to a more centralized county controlled system. The consolidation movement, which had been philosophically embraced by educators since the late 1800's, was now given new impetus. The movement met with some resistance from rural people

United States Department of the Interior
National Park ServiceNational Register of Historic Places
Continuation SheetSection number 8 Page 2 Lakeville High School

who were reluctant to give up local control of schools. The onset of the depression in 1929 further weakened consolidation efforts, and the dreams of reformers were not realized to any large extent until after World War II, when major consolidation finally took place. Building and improvement programs, however, did go into effect during the 1920's. 30% of total state tax revenue went to education during this period, as opposed to 5% in 1905 (Madison, p. 269). Some ground was gained, as the number of one-teacher schoolhouses in Indiana went from 4,500 in 1920 to 616 in 1945 (Madison, p.274), even though programs were cut back extensively during the 1930's.

Lakeville High School was part of this building program. Plans for the building of the school began in earnest when Union Township bought an 8 acre parcel of land from George & Elizabeth Holland on May 28, 1930, for the sum of \$3,618.45. Blueprints were completed on August 4, 1930, by Hubert Miller, an architect from Elkhart, Indiana. Construction of the building was done in 1931 and in 1932 the first class graduated from the new high school. It was the first high school in Union Township. Classes were held in the building until 1965 when LaVille High School was built. The school was then used as an elementary school until 1983 when it was closed altogether. Built in 1931, the school may have been one of the last built in the state before the Depression reached its full impact. This date of construction marks Lakeville High School as a part of the drive for better educational facilities, and is a sign of the Hoosier desire for excellence in education during the period. Within the theme of education, a total of 32 buildings are represented in St. Joseph County. Most of these are one room schoolhouses, a legacy of the district school era. Only 7 historic consolidated schools exist, and only 2 public high schools still stand. The other high school is North Liberty High School, which received a low survey rating due to alterations.

Lakeville High School is not only historically significant, but architecturally significant as well. The school is an excellent example of Collegiate Gothic Architecture, a style prevalent on college campuses during the first half of this century. Collegiate Gothic, a late form of Gothic Revival architecture, was simpler and less ornate, while still maintaining the powerful appearance of traditional Gothic. According to the St. Joseph

United States Department of the Interior
National Park ServiceNational Register of Historic Places
Continuation SheetSection number 8 Page 3 Lakeville High School

County Summary Report (1985), page 21, "Collegiate Gothic... flourished on college campuses, for it was thought to express a desire to attain a higher form of knowledge." In fact, two St. Joseph County Colleges, St. Mary's College and Notre Dame University, contain a significant number of Collegiate Gothic buildings. "Notre Dame and St. Mary's build in several styles of architecture after the mid 20th Century, however, prior to this the predominant style was Collegiate Gothic, an appropriate architectural expression which symbolized higher learning (Sites and Structures, p. 22)."

Lakeville High School is one of only two remaining buildings in the entire rural area of St. Joseph County built in the Collegiate Gothic style, the other being Harris Township Consolidated School in Granger, Indiana, which is still in use as a school today. Although Lakeville High School has not been in use since 1983, it remains structurally sound and has retained almost all of its original design and features. In 1956, other structures were added to the property, but additions were not made to the original building, which is totally intact. When considered in light of these facts, Lakeville High School is important architecturally speaking, because by the very style in which it was built, it exemplifies the struggle for learning, which is the very essence of education itself. Thus, although the building's date of construction alone makes it representative of the push for educational reform, its architecture further reinforces these same values.

Virtually the same building that was erected in 1931, Lakeville High School stands as an imposing reminder of the importance of education, and of the people who fought to improve its quality. Both by the time period in which it was built and by its architectural design and construction, Lakeville High School symbolizes the struggle of early 20th Century Hoosiers for educational excellence.

United States Department of the Interior
National Park Service

National Register of Historic Places
Continuation Sheet

Section number 9 Page 1 Lakeville High School

Interviews with George Myers: Beuher, Georgianna; Culp, James; Mack, Joe; July 1990.

Madison, James A. Indiana Through Tradition and Change, A History of the Hoosier State and its People, 1920-1945. Indianapolis: Indiana Historical Society, 1982.

Miller, Hubert. Original plans for the Lakeville High School, August 4, 1930.

Report of the State Superintendent of Public Instruction. Indianapolis: State Printing, 1890-1940. (Note: after about 1925, reports are bound into the State Yearbook.)

St. Joseph County Summary Report. Indiana Historic Sites and Structures Inventory, 1985.

**United States Department of the Interior
National Park Service**

**National Register of Historic Places
Continuation Sheet**

Section number 10 Page 1 Lakeville High School

Verbal Boundary (continued)

(200) feet, then north for two hundred (200) feet, then east for two hundred (200) feet, then south for two hundred (200) feet and ending at the point of beginning.

United States Department of the Interior
National Park Service

**National Register of Historic Places
Continuation Sheet**

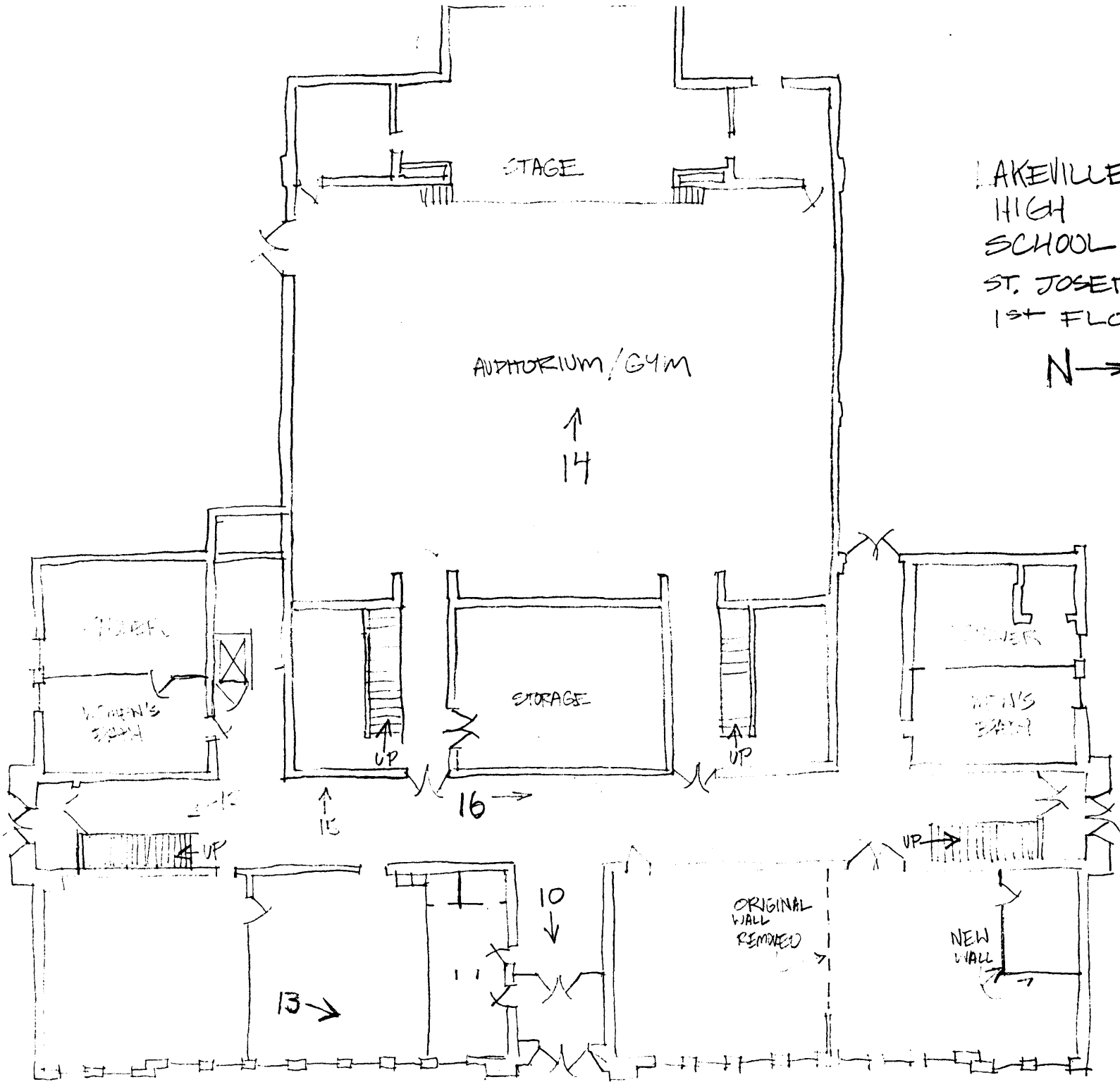
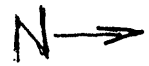
Section number photos Page 1 Lakeville High School

The following information is the same for all photographs:

1. Lakeville High School
2. St. Joseph County, Indiana
3. George Myers
4. 8-17-90
5. George Myers
c/o Old Lakeville School Project
21320 Surface Ave.
Lakeville, IN 46536

- #1 Exterior, Main facade, looking west
- #2 South elevation, looking north
- #3 North elevation, looking south
- #4 Rear elevation, looking east
- #5 Rear elevation, looking east/northeast
- #6 Main entry arch, looking west
- #7 Bas-relief panel in parapet, looking west
- #8 Bas-relief panel in parapet toward north corner, looking west
- #9 Elementary school additions formerly connected to high school, looking west
- #10 Interior, entry foyer, looking east
- #11 Second floor interior hall, looking north
- #12 First floor staircase, looking south
- #13 Classroom interior, looking northeast
- #14 Auditorium/Gym, Looking west
- #15 Water fountain, looking west
- #16 Lockers, first floor, looking north

LAKEVILLE
HIGH
SCHOOL
ST. JOSEPH CO., IN
1st FLOOR



LAKEVILLE
HIGH
SCHOOL
ST. JOSEPH CO., IN
2nd FLOOR

N

