

# NOMINATION PROPOSAL - FLORIDA

NATIONAL REGISTER OF HISTORIC PLACES

DIVISION OF ARCHIVES, HISTORY AND RECORDS MANAGEMENT - FLORIDA DEPARTMENT OF STATE

TYPE ALL ENTRIES -- COMPLETE ALL SECTIONS

**1 NAME** MRNS# 34  
 HISTORIC Sarasota High School  
 AND/OR COMMON

**2 LOCATION**  
 STREET & NUMBER 1001 South Tamiami Trail  
 CITY, TOWN Sarasota VICINITY OF N/A Sarasota  
 STATE Florida COUNTY

**3 CLASSIFICATION**

CATEGORY	OWNERSHIP	STATUS	PRESENT USE
<input type="checkbox"/> DISTRICT	<input checked="" type="checkbox"/> PUBLIC	<input checked="" type="checkbox"/> OCCUPIED	<input type="checkbox"/> AGRICULTURE <input type="checkbox"/> MUSEUM
<input checked="" type="checkbox"/> BUILDING(S)	<input type="checkbox"/> PRIVATE	<input type="checkbox"/> UNOCCUPIED	<input type="checkbox"/> COMMERCIAL <input type="checkbox"/> PARK
<input type="checkbox"/> STRUCTURE	<input type="checkbox"/> BOTH	<input type="checkbox"/> WORK IN PROGRESS	<input checked="" type="checkbox"/> EDUCATIONAL <input type="checkbox"/> PRIVATE RESIDENCE
<input type="checkbox"/> SITE	<b>PUBLIC ACQUISITION</b>	<b>ACCESSIBLE</b>	<input type="checkbox"/> ENTERTAINMENT <input type="checkbox"/> RELIGIOUS
<input type="checkbox"/> OBJECT	<input type="checkbox"/> IN PROCESS	<input checked="" type="checkbox"/> YES: RESTRICTED	<input type="checkbox"/> GOVERNMENT <input type="checkbox"/> SCIENTIFIC
	<input type="checkbox"/> BEING CONSIDERED	<input type="checkbox"/> YES: UNRESTRICTED	<input type="checkbox"/> INDUSTRIAL <input type="checkbox"/> TRANSPORTATION
		<input type="checkbox"/> NO	<input type="checkbox"/> MILITARY <input type="checkbox"/> OTHER:

**4 OWNER OF PROPERTY**  
 NAME Sarasota County Board of Public Instruction  
 STREET & NUMBER Sarasota High School  
 S. Washington Boulevard  
 CITY, TOWN Sarasota VICINITY OF Florida STATE Florida ZIP CODE 33577

**5 LOCATION OF LEGAL DESCRIPTION**  
 COURTHOUSE, REGISTRY OF DEEDS, ETC. Sarasota County Court House Recording Department  
 STREET & NUMBER Room 10, 2000 Main Street P.O. Box 3079  
 CITY, TOWN Sarasot STATE Florida ZIP CODE 33578

**6 REPRESENTATION IN EXISTING SURVEYS**  
 TITLE Florida Master Site File (FMSF) 8So362  
 and Historic, Architectural and Archaeological Survey of Sarasota (HAASSO)  
 DATE FMSF: 1977 HAASS: 1982  FEDERAL  STATE  COUNTY  LOCAL  
 DEPOSITORY FOR SURVEY RECORDS Division of Archives, History and Records Management Dept. of State  
 CITY, TOWN The Capitol Tallahassee STATE Florida 32301

## 7 DESCRIPTION

CONDITION		CHECK ONE	CHECK ONE
<input checked="" type="checkbox"/> EXCELLENT	<input type="checkbox"/> DETERIORATED	<input type="checkbox"/> UNALTERED	<input checked="" type="checkbox"/> ORIGINAL SITE
<input type="checkbox"/> GOOD	<input type="checkbox"/> RUINS	<input checked="" type="checkbox"/> ALTERED	<input type="checkbox"/> MOVED DATE _____
<input type="checkbox"/> FAIR	<input type="checkbox"/> UNEXPOSED		

DESCRIBE THE PRESENT AND ORIGINAL (IF KNOWN) PHYSICAL APPEARANCE

### SUMMARY OF PRESENT AND ORIGINAL PHYSICAL APPEARANCE

Located at 1001 South Tamiami Trail, the red brick and glazed terra cotta, late Gothic Revival, three-story with 4- $\frac{1}{2}$ -story entrance tower building was designed by M. Leo Elliott as the Sarasota High School in 1926.<sup>1</sup> Completed in 1927, the rectangular, irregular plan, masonry-walled structure was set on a high base of limestone and concrete in imitation of limestone. Although the west elevation was three-stories, the east elevation was a two-story structure which was parallel to the west elevation and terminated in two-story perpendicular wings.<sup>2</sup> The flat roof surfaces of the school were protected by flat parapet projections ornamented with glazed terra cotta crenellation. A 4- $\frac{1}{2}$ -story tower was located at the entrance of the west elevation. The corners of the tower were marked by brick buttresses, which terminated in glazed terra cotta cluster columns. Ornate crocket projections formerly pierced the tower skyline, but were removed at an unknown date.<sup>3</sup> Gothic Revival colonettes, crockets, tracery, quatrefoils and bosses were executed in glazed terra cotta on the tower facade. The entrance door was set within Tudor arches and lancet openings appeared above the panelled double door. To the north and south of the tower extended two, three-story wings, which consisted of five blocks of windows arranged in groupings of three and four. The three-story north and south elevations were identical, three-bay elevations with center-bay entrances set within buttressed enframements with tracery windows above. The original entrance lobby was decorated by rows of Tudor arches with plaster cast statues located within the arched aisles. In addition to the significant Elliott-designed school building, there is an addition which was designed by Paul Rudolph located at the southeast quadrant of the school property.

### TEXT SUPPORTING SUMMARY OF PRESENT AND ORIGINAL PHYSICAL APPEARANCE

The red brick and glazed terra cotta, Late Gothic Revival, three-story with 4- $\frac{1}{2}$ -story entrance tower building located at 1001 South Tamiami Trail, was designed by architect M. Leo Elliott as the Sarasota High School in 1926.<sup>4</sup> The school was completed in 1927 and the first senior class graduated in 1928.<sup>5</sup> Designed in the Late Gothic Revival Style or the "Collegiate Gothic," the rectangular, irregular plan masonry wall structure was set on a high base of limestone and concrete laid in imitation of limestone. The flat roof surfaces were protected by flat parapets ornamented with label-enframed and cusped crenellations. At the east elevation appeared a two-story wing which was parallel to the three-story west elevation.

The main or entrance elevation, located at the west elevation, was characterized by the use of a 4- $\frac{1}{2}$ -story massive square plan entrance tower located at the center of the facade. The corners of the tower were marked by brick pier buttresses, which terminated at the top of the tower projection in glazed terra cotta cluster columns. Ornate crocket projections formerly pierced the skyline, but were removed at an unknown date.<sup>6</sup> The tower was ornamented with various combinations of colonettes, crockets, tracery, quatrefoils and bosses, all Gothic Revival motifs, executed in ornamental glazed terra cotta. The entrance door was approached

CONTINUATION SHEET

Item Number: 7 (Description)

Page Number:

by a series of brick stairs with soldier course treads. The two-leaved wood door with Gothic Revival panelling was set within a deeply recessed series of graduated Tudor-arched openings. The door transom was pierced by seven round-arched lancet openings. A vertical band of windows located between the corner buttresses were separated by tiled spandrels.

Located to the north and south of the center entrance tower were two, three-story blocks pierced by industrial-type windows, arranged in groups of four and three. At the first two floors the windows were separated by terra cotta spandrels, while at the third floor the windows rested on a band course of glazed tiling and the window lintels were a continuous label molding. Modified quoin projections enframed the windows at the first and second floors. Each three-story wing was pierced by five groups of windows which appeared in groups of four and three.

An ornate entrance enframing with tracery windows, buttresses and door set within a graduated series of Tudor arches was also provided at the three-story north elevation. The two banks of windows arranged in sets of four and entrance created a three-bay north elevation facade. The original panelled door formerly located at the north elevation has been removed and replaced by a metal door with small glass openings. The south elevation is identical to the north elevation, with the exception that the original panelled door with four-light upper panels per leaf remains intact. At the northeast and southeast were placed two, two-story intersecting brick wings.<sup>7</sup> At the east elevation, large pointed-arched openings formerly pierced the northeast two-story wing, but these openings were subsequently filled in with concrete and six-light windows appear at the upper floor while narrow four-light transoms appear at the first floor opening. The entire length of the east elevation stepped down to a two-story building, also with flat roof.

The floors of the ground floor corridors were covered in terrazzo. The original entrance lobby located at the west tower entrance was marked by Tudor-arched arcades with cluster columns and heraldic shields located in the spandrels above. The coved ceiling was further ornamented by the application of square bosses. Plaster cast statuary donated by several graduating senior classes were located between the arcades.<sup>8</sup>

The Sarasota High School is remarkably well-maintained and intact. Continuing the tradition of architectural excellence, an addition to the school complex, located at the southeast quadrant of the high school property was designed by Paul Rudolph.

## 8 SIGNIFICANCE

PERIOD	AREAS OF SIGNIFICANCE -- CHECK AND JUSTIFY BELOW			
<input type="checkbox"/> PREHISTORIC	<input type="checkbox"/> ARCHEOLOGY-PREHISTORIC	<input checked="" type="checkbox"/> COMMUNITY PLANNING	<input type="checkbox"/> LANDSCAPE ARCHITECTURE	<input type="checkbox"/> RELIGION
<input type="checkbox"/> 1400-1499	<input type="checkbox"/> ARCHEOLOGY-HISTORIC	<input type="checkbox"/> CONSERVATION	<input type="checkbox"/> LAW	<input type="checkbox"/> SCIENCE
<input type="checkbox"/> 1500-1599	<input type="checkbox"/> AGRICULTURE	<input type="checkbox"/> ECONOMICS	<input type="checkbox"/> LITERATURE	<input type="checkbox"/> SCULPTURE
<input type="checkbox"/> 1600-1699	<input checked="" type="checkbox"/> ARCHITECTURE	<input type="checkbox"/> EDUCATION	<input type="checkbox"/> MILITARY	<input type="checkbox"/> SOCIAL/HUMANITARIAN
<input type="checkbox"/> 1700-1799	<input type="checkbox"/> ART	<input type="checkbox"/> ENGINEERING	<input type="checkbox"/> MUSIC	<input type="checkbox"/> THEATER
<input type="checkbox"/> 1800-1899	<input type="checkbox"/> COMMERCE	<input type="checkbox"/> EXPLORATION/SETTLEMENT	<input type="checkbox"/> PHILOSOPHY	<input type="checkbox"/> TRANSPORTATION
<input checked="" type="checkbox"/> 1900-	<input type="checkbox"/> COMMUNICATIONS	<input type="checkbox"/> INDUSTRY	<input type="checkbox"/> POLITICS/GOVERNMENT	<input type="checkbox"/> OTHER (SPECIFY)
		<input type="checkbox"/> INVENTION		

SPECIFIC DATES Designed March 2, 1926

BUILDER/ARCHITECT M. Leo Elliott, Tampa & St. Petersburg/T.A. Monk

### SUMMARY OF STATEMENT OF SIGNIFICANCE

Located at 1001 South Tamiami Trail, the brick and glazed terra cotta, Late Gothic Revival three-story with 4- $\frac{1}{2}$ -story entrance tower building was designed by Tampa and St. Petersburg architect M. Leo Elliott as the Sarasota High School.<sup>9</sup> The graduating class of 1928 was the first class to graduate from the new school which was designed in 1926.<sup>10</sup> The construction of the Sarasota High School was part of a county-wide program which included the erection of the South Side and Bay Haven Elementary Schools.<sup>11</sup> The school expansion program coincided with the land "Boom" upward rise of real estate prices; as a result, the High School site was purchased for \$317,000 in 1927.<sup>12</sup> The construction of the three schools was indicative of the anticipated rise in the school-age population and was recommended by the Cambridge Massachusetts planner, John Nolen, in his Comprehensive Plan for the City which was published in 1925.<sup>13</sup> The architect of record, M. Leo Elliott was also responsible for the designs of the Bay Haven and South Side Elementary Schools in 1926.<sup>14</sup> Mr. Elliott was a remarkably eclectic designer and was equally as adept working in the Mediterranean Revival style used for the elementary schools as in the use of the Late Gothic Revival (or "Collegiate Gothic") in his Sarasota High School design. Executed in red brick and ornamental glazed terra cotta, the Sarasota High School is a prominent landmark in the City of Sarasota. Primary design emphasis was placed on the entrance bay, a 4- $\frac{1}{2}$ -story tower with red brick piers and cream-toned, glazed terra cotta tracery, spandrels and crockets. Even the industrial banks of windows located at the three-story wings which flank the central tower are embellished with narrow label lintels, and quatrefoil spandrels. In addition to the school design, Mr. Elliott was also responsible for the design of the first skyscraper in the City, the former First National company building on Main Street, subsequently, the Orange Blossom Hotel.<sup>15</sup>

### TEXT SUPPORTING SUMMARY OF STATEMENT OF SIGNIFICANCE

The three-story brick and glazed terra cotta, Late Gothic Revival Building with 4- $\frac{1}{2}$ -story entrance tower located at 1001 South Tamiami Trail was designed in 1926 by Tampa and St. Petersburg architect M. Leo Elliott and opened as the Sarasota High School with the first senior class graduating from the new school in 1928.<sup>16-17</sup> The construction of the Sarasota High School was part of a county-wide school expansion program which included the erection of the Bay Haven Elementary School (MRNS #31) and the South Side Elementary School (MRNS #35). The three schools were designed by M. Leo Elliott in 1926.<sup>18</sup> The undertaking of the three major school complexes was indicative of the anticipated rise in the school-age population of the City.

CONTINUATION SHEET

Item Number: 8 (Significance)

Page Number:

The geographical spread of the school locations reflected the expansion of the residential limits of the City to the north, south and east. Unfortunately, the school expansion program coincided with the upward rise in real estate prices during the "Boom," which resulted in the high prices paid for potential school sites. The Sarasota High School site, in particular, was purchased at a cost of \$317,000 in 1927.<sup>19</sup> In The Story of Sarasota, author Karl Grismer commented that the "tract upon which the school [Sarasota High School] was located cost more than the Florida Mortgage and Investment Co., Ltd., paid for the entire site of Sarasota--and 50,000 acres beside . . . in 1885!"<sup>20</sup> Bond issues in excess of \$1,500,000 were used to float the land acquisition, construction and operating costs required by the school expansion program.<sup>21</sup>

In 1924 the City commissioned a planning study which was published in 1925. The planning consultant, John Nolen of Cambridge, Massachusetts, advised in his report that school "sites . . . should be selected and acquired at the time of the projected [residential] development of a district. [Noting] this may usually be done at a considerable economic saving."<sup>22</sup> In his report, Mr. Nolen advised that four elementary schools be built, two of which were constructed, the Bay Haven and the Southside Elementary Schools. Mr. Nolen also recommended that a new high school be built on Osprey Avenue between Twelfth and Sixteenth Streets.<sup>23</sup> An alternate site on South Tamiami Trail was selected by the County School Board.

The architect of record, M. Leo Elliott, was responsible for the designs of the Bay Haven and South side Elementary Schools as well as the Sarasota High School.<sup>24</sup> The three schools were designed by Mr. Elliott in 1926 and represent the eclectic nature of Mr. Elliott's work. Designed in the Mediterranean Revival Style, Bay Haven and South Side Schools are remarkably rich designs executed in stucco and cast stone. Particular emphasis is placed on the entrance bays of each elementary school. The pedimented entrance bays are richly ornamented with cast stone frontispieces, with ornate column capitals and twisted shafts, foliated frieze, consoles and cornucopia embellishments. In the design of the Sarasota High School, Mr. Elliott demonstrated his ability to use the "Collegiate Gothic Style" or Late Gothic Revival Style, which had been popularized on such campuses as Princeton University (supervising architect, Ralph Adams Cram) and the Men's Campus of Duke University (Horace Trumbauer).<sup>25</sup> Mr. Elliott again placed primary design emphasis on the entrance bay of the Sarasota High School. The entrance bay is a tower projection which is highly ornamented with glazed terra cotta tracery, spandrels and crockets. The play of the cream-toned glazed terra cotta against the severe red brick piers is effective. Banks of industrial windows are softened by the allocation of label lintels and quatrefoil spandrels at the five-bay wings which flank the central entrance tower of the High School. Prior to the 1926 school designs, Mr. Elliott was responsible for the design of the first skyscraper in the City, the First National Company building on Main Street (which later became the Orange Blossom Hotel).<sup>26</sup>

Occupying a large site on South Tamiami Trail, the Sarasota High School is a prominent landmark in the City of Sarasota. The significant red brick and glazed terra cotta structure has been well maintained and is noteworthy in architectural terms and for the integrity of the structure. At the southeast edge of the high school site is a significant addition which was built by the architect, Paul Rudolph.

CONTINUATION SHEET

Item Number: 7 (Description), 8 (Significance)

Page Number:

NOTES FOR NOMINATION PROPOSAL--FLORIDA  
NATIONAL REGISTER OF HISTORIC PLACES  
MULTIPLE RESOURCE NOMINATION SARASOTA

<sup>1</sup>"Sarasota's Commodious High School Building." This Week in Sarasota Scrapbook. N.S., N.D. Located at Sarasota County Historical Archives, Sarasota, Florida.

<sup>2</sup>Sanborn Map Company. Maps of Sarasota. 1929. Sheet 14.

<sup>3</sup>Sarasota High School. The Sailor's Log. 1928, p. 23

<sup>4</sup>"Sarasota's Commodious High School Building." This Week in Sarasota Scrapbook. N.S., N.D. Located at Sarasota County Historical Archives.

<sup>5</sup>Sarasota High School. The Sailor's Log. Sarasota, 1928.

<sup>6</sup>Ibid.

<sup>7</sup>Sanborn Map Company. Maps of Sarasota. 1929. Sheet 14.

<sup>8</sup>Sarasota High School. The Sailor's Log. Vol. XXI, 1946, p. 7.

<sup>9</sup>"Sarasota's Commodious High School Building." This Week in Sarasota Scrapbook. N.S., N.D. Located at Sarasota County Historical Archives.

<sup>10</sup>The Sailor's Log. 1928.

<sup>11</sup>Karl Grismer. The Story of Sarasota. Sarasota: M. E. Russell, 1946, p. 240.

<sup>12</sup>Ibid.

<sup>13</sup>John Nolen. Report on Comprehensive Plan for Sarasota, Florida. Cambridge, Massachusetts. 1925. p. 14.

<sup>14</sup>Grismer. p. 240.

<sup>15</sup>Sarasota Times. May 8, 1924.

<sup>16</sup>The Sailor's Log. 1928.

<sup>17</sup>"Sarasota's Commodious High School Building." This Week in Sarasota Scrapbook. N.S., N.D. Located at Sarasota County Historical Archives.

<sup>18</sup>Grismer. p. 240.

<sup>19</sup>Ibid.

CONTINUATION SHEET

Item Number: 7 (Description), 8 (Significance)

Page Number:

<sup>20</sup>Ibid.

<sup>21</sup>Ibid.

<sup>22</sup>John Nolen, City Planner. Report on Comprehensive City Plan for Sarasota, Florida. Cambridge, Massachusetts, 1925. p. 14.

<sup>23</sup>Ibid.

<sup>24</sup>Grismer, p. 240.

<sup>25</sup>Marcus Whiffen. American Architecture Since 1780: A Guide to the Styles. Cambridge: M.I.T. Press, 1969, p. 173.

<sup>26</sup>Sarasota Times. May 8, 1924...

CONTINUATION SHEET

Item Number: 9 (Bibliographical References)

Page Number:

Grismer, Karl. The Story of Sarasota. Sarasota: M. E. Russell, 1946.

Nolen, John. Report on Comprehensive Plan for Sarasota, Florida. Cambridge, Massachusetts. 1924.

Sanborn Map Company. Maps of Sarasota. 1929.

"Sarasota's Commodious High School Building." This Week in Sarasota Scrapbook. N.S., N.D. Located at Sarasota County Historical Archives, Sarasota, Florida.

Sarasota High School. The Sailor's Log. 1924, 1927, 1928, 1946.

Sarasota Times. February 21, 1924.

Whiffen, Marcus. American Architecture Since 1780: A Guide to the Styles. Cambridge: M.I.T. Press, 1969.



# 9 BIBLIOGRAPHICAL REFERENCES

SEE CONTINUATION SHEETS

# 10 GEOGRAPHICAL DATA

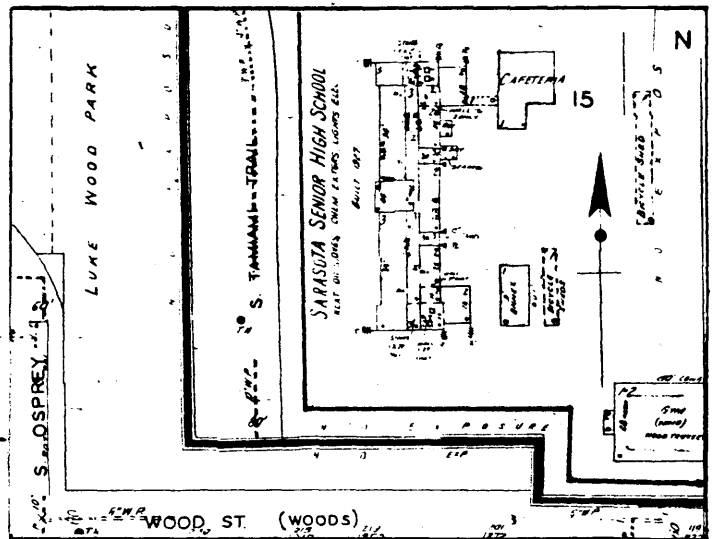
- Site Size (Approx. Acreage of Property):

Apx. 1 acre

UTM Coordinates:

17	348690	3023180
ZONE	EASTING	NORTHING

Township	Range	Section
T36S	R18E	S29



## VERBAL BOUNDARY DESCRIPTION

Com. SE corner Block A replat of Avon Heights No. 2, then N. 10 feet for POB then W. 867.56 ft. then N. 254.51 feet then W 15 feet then N. 118.81 feet then Nwly 87.53 feet then W. Alg Hudson Bayou to E. Line Tamiami Trail then N. Alg. Trail to S. Line Block C Glenwood Park Unit 1 then East 202.4 feet to SW corner Lot 7 Block c, then N. 108.8 feet then East 226 feet, then N. 45-E 84.8 feet then Nly 108 feet.

## LIST ALL STATES AND COUNTIES FOR PROPERTIES OVERLAPPING STATE OR COUNTY BOUNDARIES

STATE	CODE	COUNTY	CODE
N/A			
STATE	CODE	COUNTY	CODE
N/A			

# 11 FORM PREPARED BY

NAME / TITLE

Sarah Latham Kearns/Preservation Consultant, City of Sarasota

ORGANIZATION

c/o Planning Department

DATE

August 1983

STREET & NUMBER

City Hall P. O. Box 1058

TELEPHONE

813-365-2200, ext. 262

CITY OR TOWN

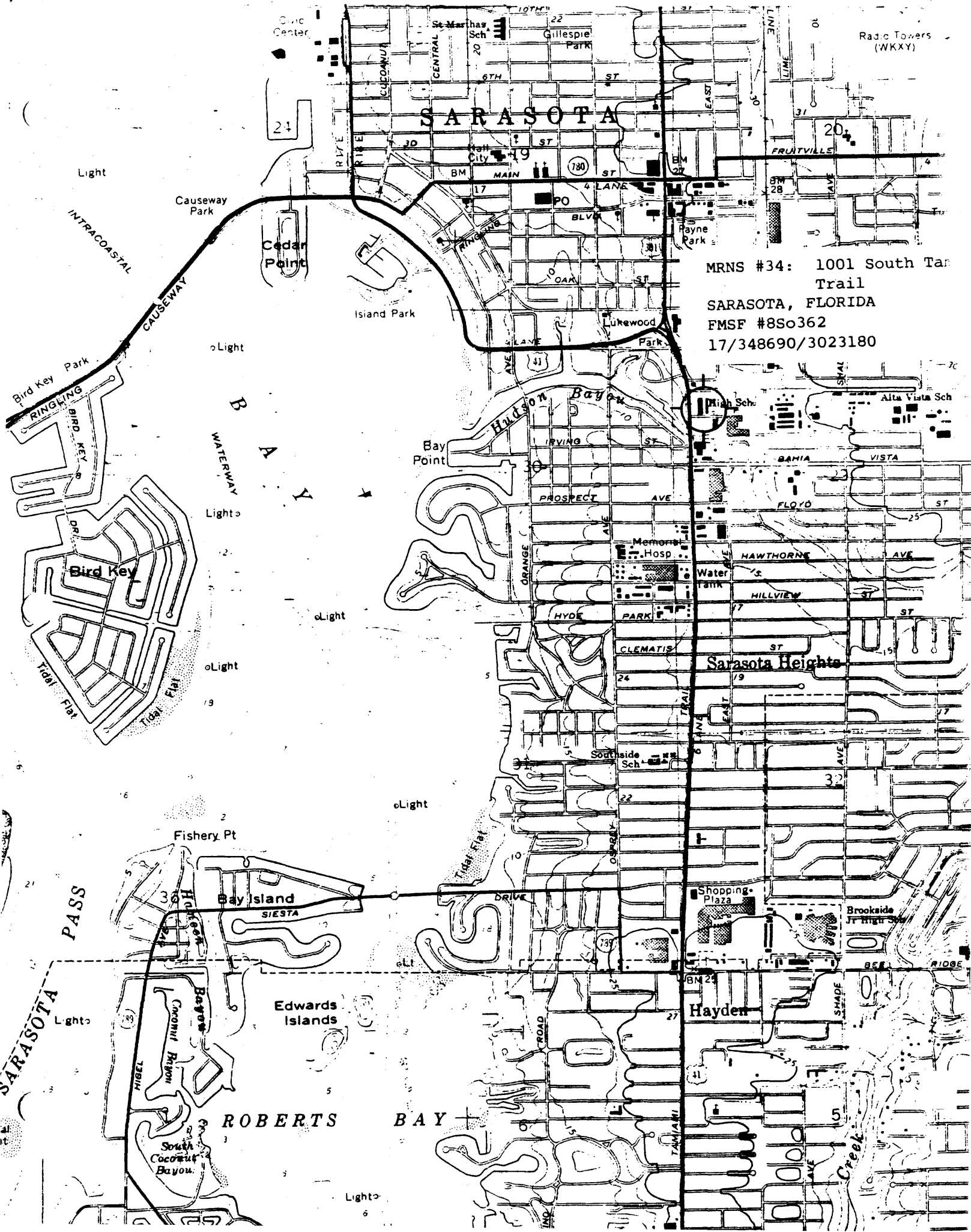
Sarasota

STATE

Florida

ZIP CODE

33578



Radio Towers (WKXY)

# SARASOTA

MRNS #34: 1001 South Tan Trail  
SARASOTA, FLORIDA  
FMSF #8So362  
17/348690/3023180

## Sarasota Heights

## Hayden

## ROBERTS BAY

INTRACOASTAL CAUSEWAY

BIRD KEY  
RINGLING  
Tidal Flat

SARASOTA PASS

Causeway Park

Cedar Point

Island Park

Bay Point

Fishery Pt

Bay Island  
SIESTA

Edwards Islands

South Coconut Bayou

780

780

780

780

780

780

780

780

780