



Messerschmidt Hardware Mill
Westbrook, CT

HRC Photo, 4/84

Negative filed with Conn.

Hist. Comm., Hartford

Mill and dam
view northwest



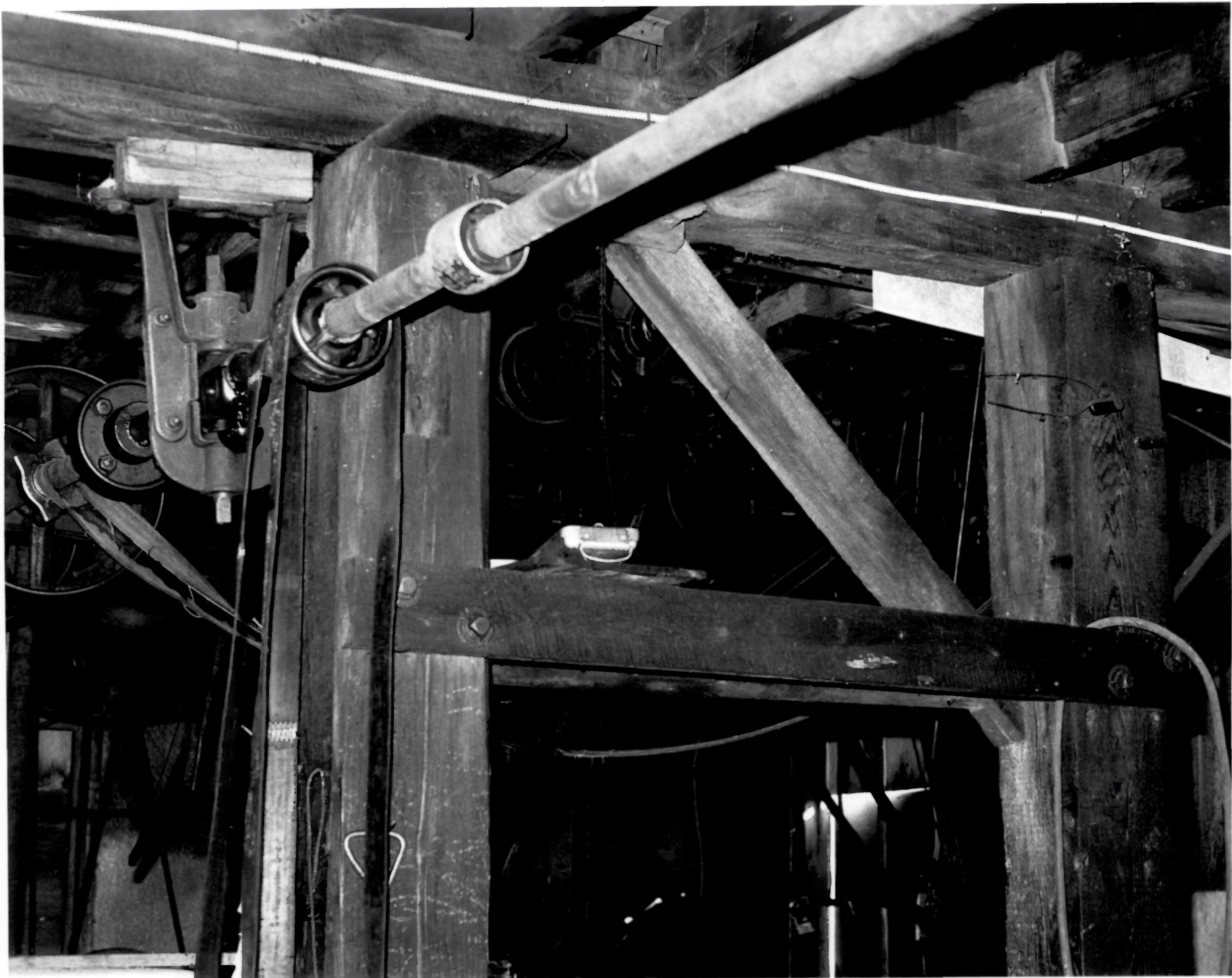
Messerschmidt Hardware Mill
Westbrook, CT

HRC Photo, 4/84

Negative filed with Conn.
Hist. Comm., Hartford

Rear of mill showing dam
embankment and headrace
opening, view southeast

2



Messerschmidt Hardware Mill
Westbrook, CT

HRC Photo, 4/84

Negative filed with Conn.
Hist. Comm., Hartford

Interior framing and
line-shafting
view southeast

3



Messerschmidt Hardware Mill
Westbrook, CT

HRC Photo, 4/84

Negative filed with Conn.

Hist. Comm., Hartford

Direct-current generator
view west



Messerschmidt Hardware Mill
Westbrook, CT

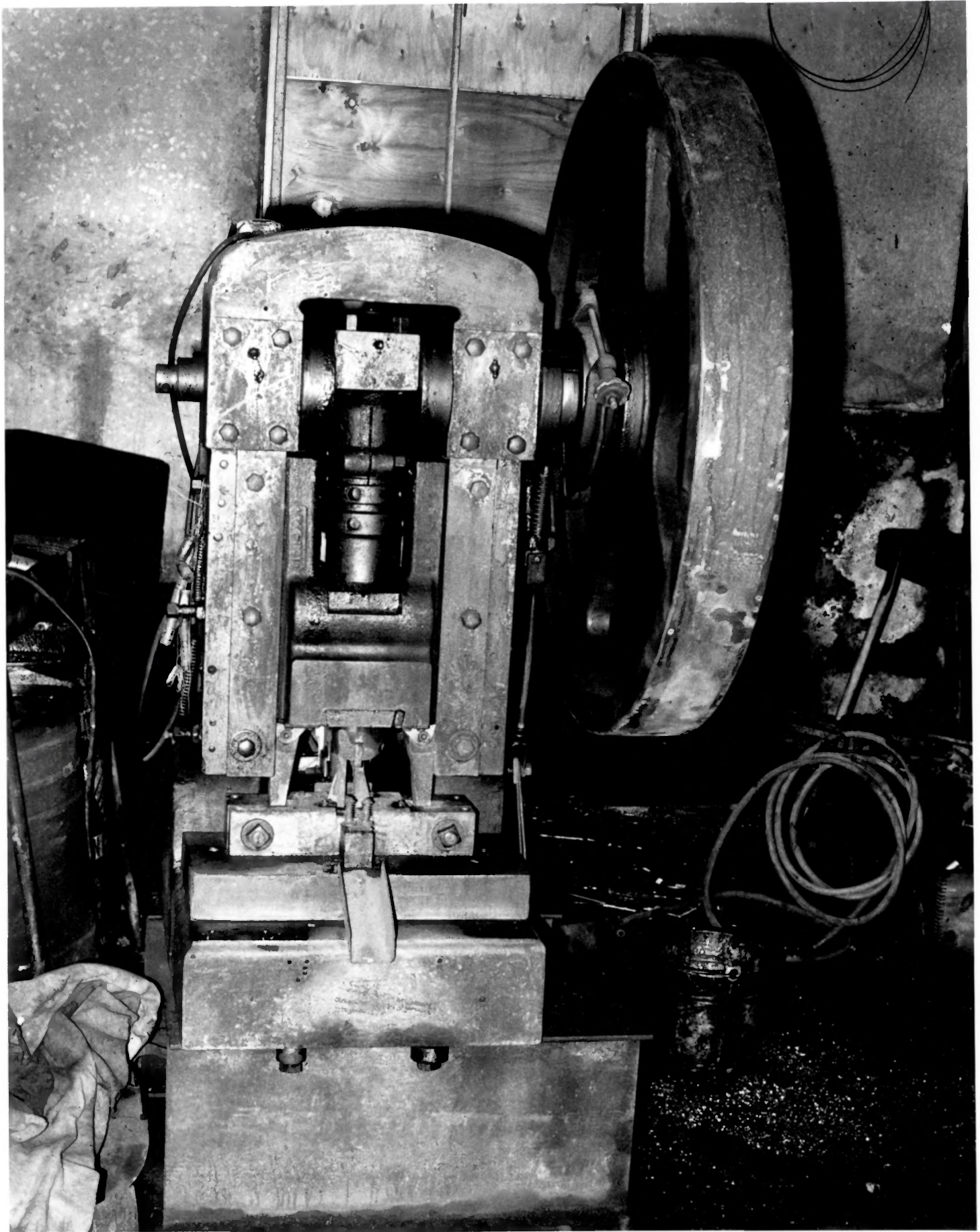
HRC Photo, 4/84

Negative filed with Conn.

Hist. Comm., Hartford

Left to right: nutcracker
parts, nut pick, lobster fork

5



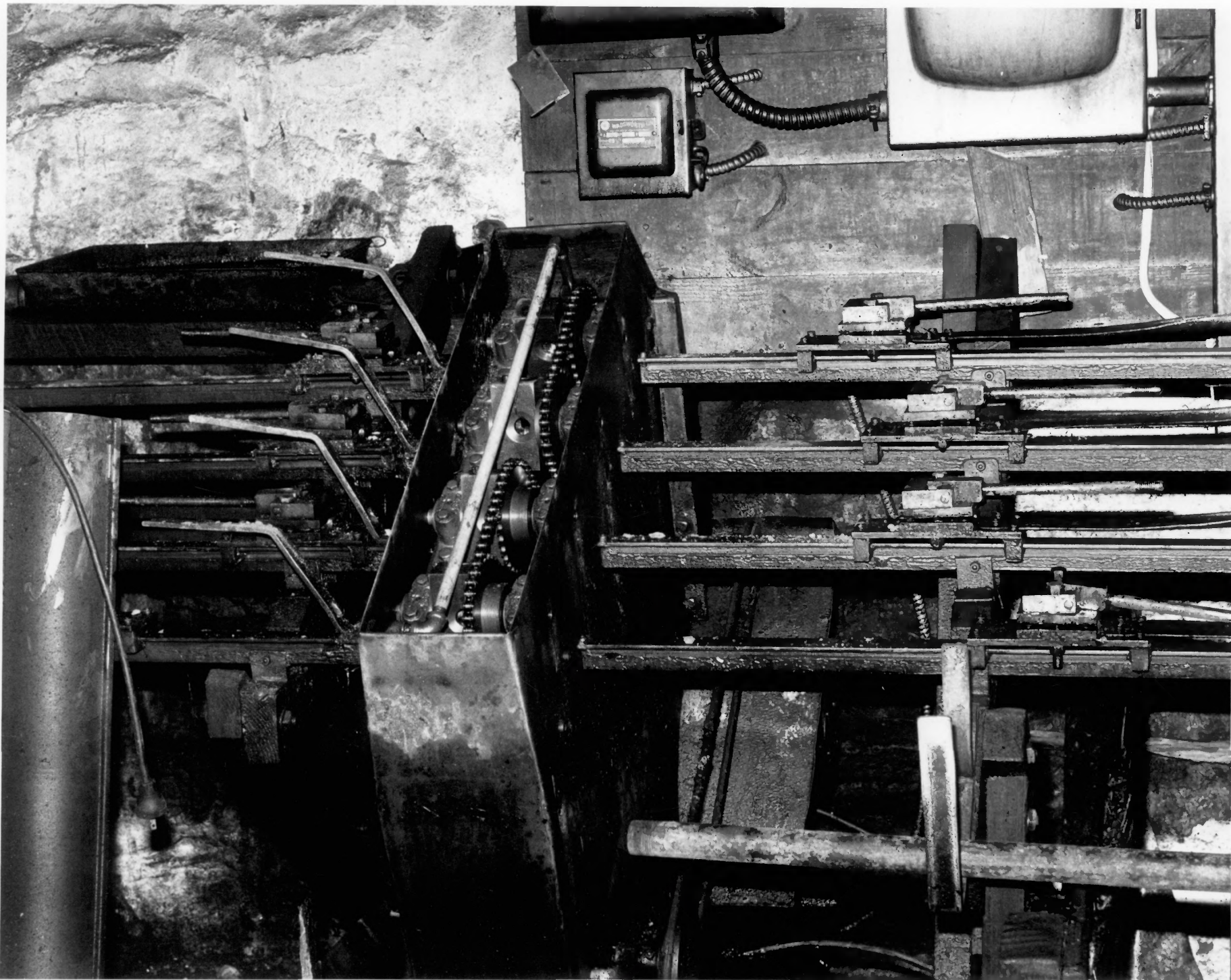
Messerschmidt Hardware Mill
Westbrook, CT

HRC Photo, 4/84

Negative filed with Conn.

Hist. Comm., Hartford

Waterbury-Farrel power press
view north

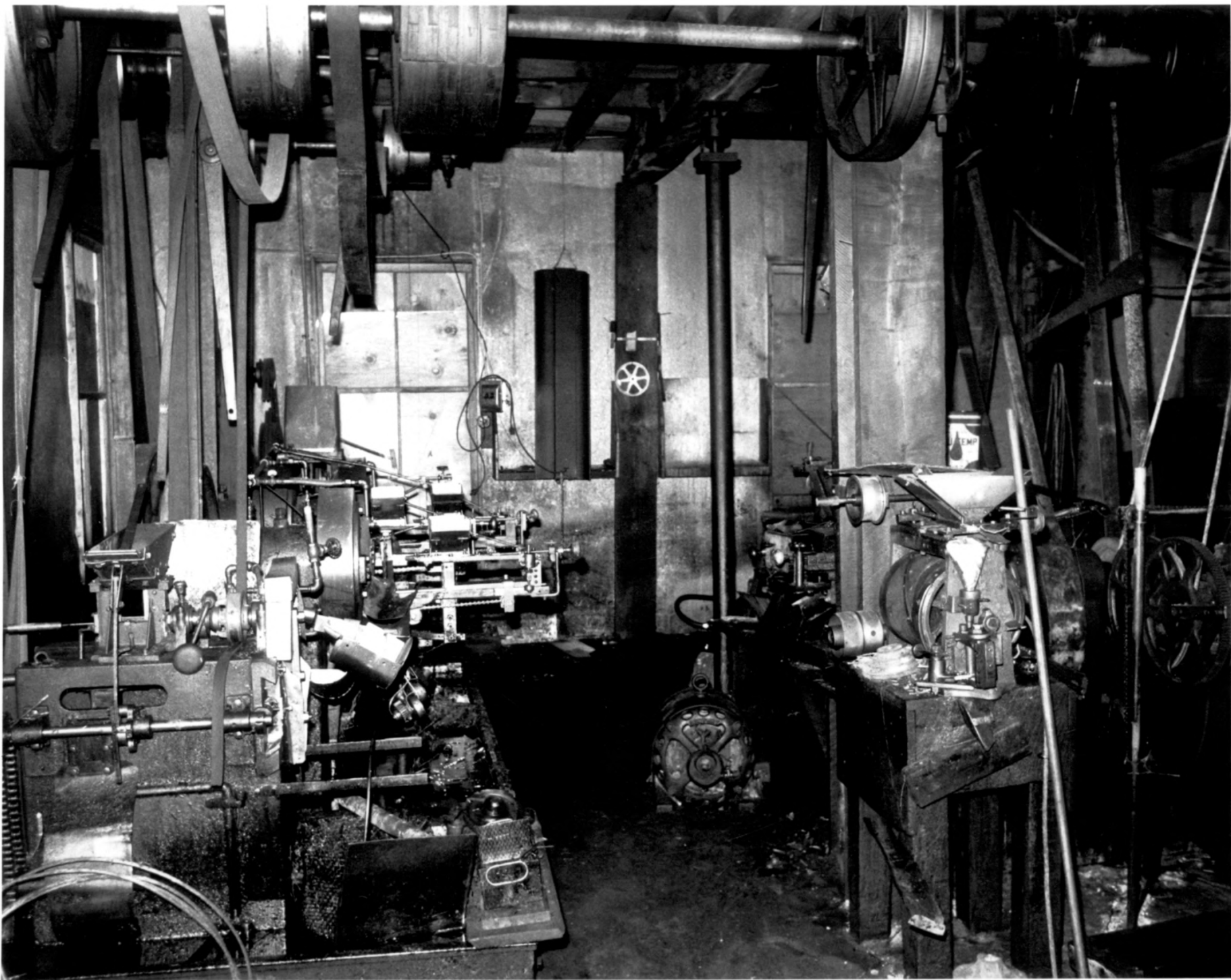


Messerschmidt Hardware Mill
Westbrook, CT

HRC Photo, 4/84

Negative filed with Conn.
Hist. Comm., Hartford

Knurling machine
view north



Messerschmidt Hardware Mill
Westbrook, CT

HRC Photo, 4/84

Negative filed with Conn.

Hist. Comm., Hartford

Swaging machines
view south

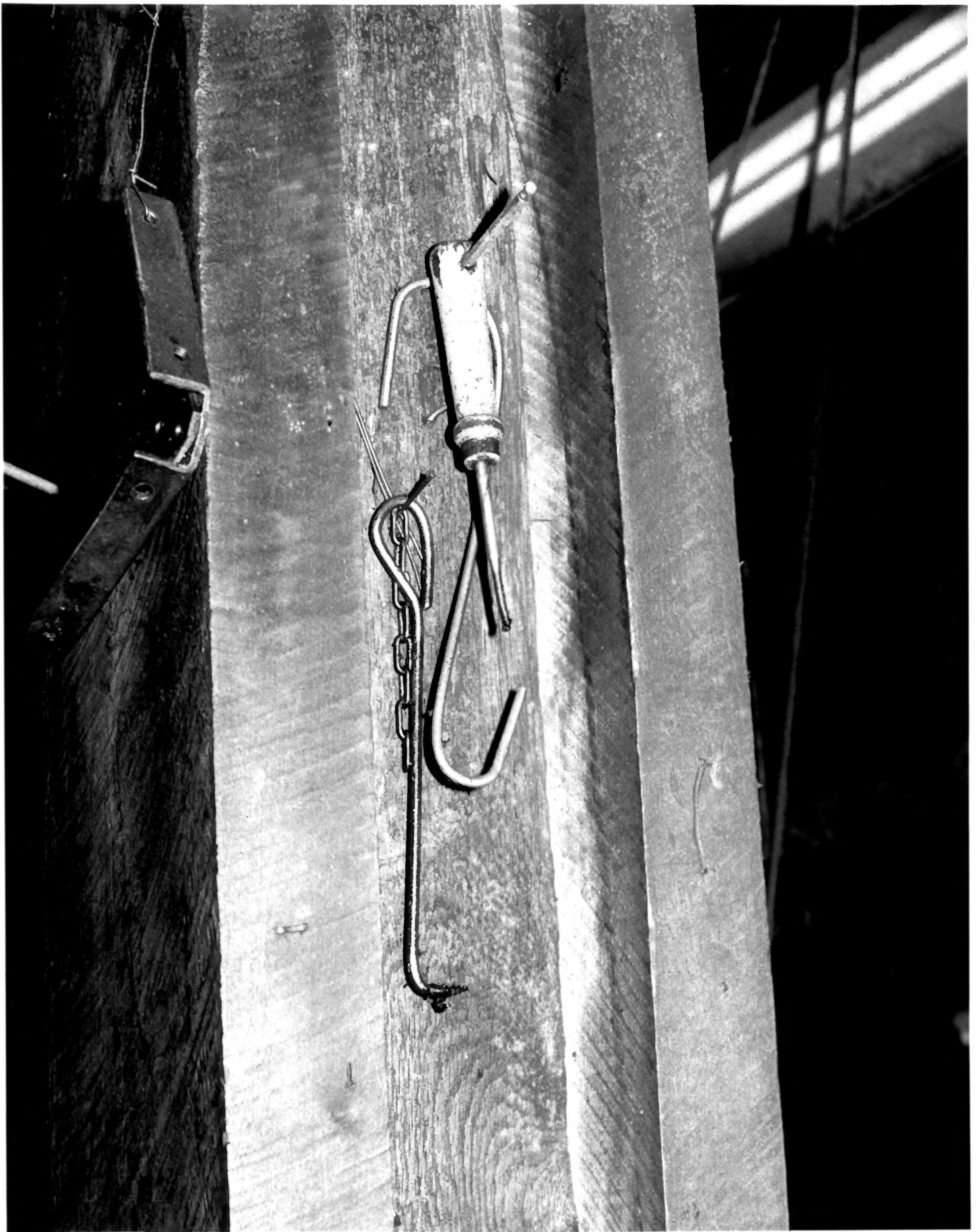


Messerschmidt Hardware Mill
Westbrook, CT

HRC Photo, 4/84

Negative filed with Conn.
Hist. Comm., Hartford

Toolroom, view west
Lathe in right foreground,
milling machine beyond lathe # 9



Messerschmidt Hardware Mill
Westbrook, CT

HRC Photo, 4/84

Negative filed with Conn.
Hist. Comm., Hartford

Worker-made tools hanging
from beam
view north

10