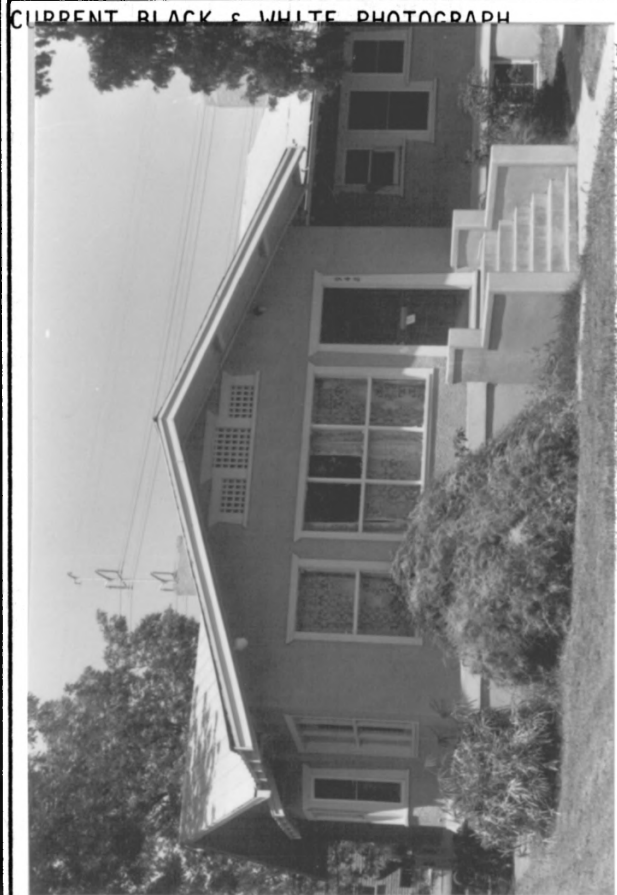


ARIZONA STATE HISTORIC PROPERTY INVENTORY

HISTORIC PROPERTY NAME Byron Redden House		COUNTY Maricopa	INVENTORY NO. 123
COMMON PROPERTY NAME Byron Redden House		QUAD/COUNTY MAP	
PROPERTY LOCATION-STREET & NO. 948 Ash Ave.			
CITY, TOWN/VICINITY OF Tempe		ASSESSOR'S PARCEL NO. 132-42-81A	
OWNER OF PROPERTY Fred J. Westendorp		PHONE	
STREET & NO./P.O. BOX 9118 Ash			
CITY, TOWN Tempe		STATE Arizona	ZIP 85282
FORM PREPARED BY Janus Associates, Inc.		DATE 12/82	
STREET & NO./P.O. BOX 2121 South Priest Suite 127		PHONE 967-7117	
CITY, TOWN Tempe		STATE Arizona	ZIP 85282
PHOTO BY Tempe Historical Society		DATE 1982	
VIEW looking northwest			
HISTORIC USE residence			
PRESENT USE residence		ACREAGE less/one	
ARCHITECT/BUILDER			
CONSTRUCTION/MODIFICATION DATES Built 1918			



PHYSICAL DESCRIPTION

The Byron Redden House is a single-story, frame house clad in stucco with a concrete foundation. The bungalow styling of the house is most evidenced in the low-pitched intersecting gabled roof, square triplet, latticework vents in the front gable end, open eaves, and broad overhangs. A concrete water table encircles the house at the floor line. A bay window with shed roof and open eaves has been added to the south side of the house. The offset front porch has been enclosed. A flight of stairs leading to the front entry is framed with stepped, low concrete walls. Windows on the front porch are two, six-light and one, rectangular, double-hung window. The front facade features a triplet of windows, two small double hung framing a larger double hung. Remaining windows are individually placed, and all are wood framed, consistent with bungalow styling.

Although the exterior of the house has been altered with the porch enclosure, the building is in excellent condition and retains its most prominent bungalow characteristics.

STATEMENT OF SIGNIFICANCE/HISTORY

The Byron Redden House is noteworthy as a well-maintained example of bungalow styling and makes a positive contribution to the surrounding neighborhood. The house was originally built with a solar hot water system, which was later removed after deterioration from rust.

The Redden House is one of the remaining bungalows built during Tempe's building boom between 1915 and the early 1930s. The popular bungalow style played a part in solving the city's housing shortage, providing modest homes for the growing population. The house was built in 1918 by Charles H. Gable, and was bought by Byron Redden in 1920. The Redden family occupied the house until 1942. Byron Redden arrived in Arizona from California in the early 1880s. He was a successful rancher and served for 25 years as a zanjero for the Tempe Canal Company. Redden died at the family home in 1939.

Although both the front and rear porches have been enclosed, the house retains its distinctive bungalow styling and is in excellent condition. The garage and apartments at the rear of the property were built after the Redden's sold the house.

SOURCES OF ABOVE INFORMATION/BIBLIOGRAPHY

Tempe News 2/27/13, 3:3
" 1/7/20, 3:12

Arizona Republic 6/15/39

Interview: Irene Bishop, 11/2/82

Tempe Tales

GEOGRAPHICAL DATA/LEGAL DESCRIPTION/VERBAL BOUNDARY DESCRIPTION

Lots 8 and 9, ex. W 153.5 F thereof, Block 30, Gage Addition

Tempe Quad

Z-12, E-412420, N-3697940

GENERAL COMMENTS/FUTURE PLANS FOR PROPERTY