

UNITED STATES DEPARTMENT OF THE INTERIOR
NATIONAL PARK SERVICE

NATIONAL REGISTER OF HISTORIC PLACES
EVALUATION/RETURN SHEET

Requested Action:	Removal	
Property Name:	Madison, Pap, Cabin	
Multiple Name:		
State & County:	SOUTH DAKOTA, Pennington	

Date Received:	Date of Pending List:	Date of 16th Day:	Date of 45th Day:	Date of Weekly List:
10/30/2017	11/27/2017	12/12/2017	12/14/2017	

Reference number:	OT08000054
Nominator:	State
Reason For Review:	

 X Accept Return Reject 12/12/2017 Date

Abstract/Summary Comments:	Property was moved without prior review by NPS. Property is listed in the State Register on its new site and there is no compelling reason to attempt a new NR listing.
Recommendation/ Criteria	

Reviewer	<u> Roger Reed </u>	Discipline	<u> Historian </u>
Telephone	<u> (202)354-2278 </u>	Date	<u> </u>

DOCUMENTATION: see attached comments : No see attached SLR : No

If a nomination is returned to the nomination authority, the nomination is no longer under consideration by the National Park Service.



24 October 2017

Keeper of National Register
National Park Service
National Register of Historic Places
1849 C Street, NW, Mail Stop 7228
Washington DC 20240



Dear Keeper:

The South Dakota SHPO requests that the Pap Madison Cabin, NRref#08000054, Rapid City, Pennington County, South Dakota, be delisted from the National Register. The cabin has been moved and no longer meets National Register eligibility requirements. Please contact chrisb.nelson@state.sd.us with any questions.

Sincerely,

Chris B. Nelson
Historic Preservation Specialist

United States Department of the Interior
National Park Service
**National Register of Historic Places
Registration Form**

This form is for use in nominating or requesting determination for individual properties and districts. See the instructions in How to Complete the National Register of Historic Places Registration Form (National Register Bulletin 16A). Complete each item by marking "X" in the appropriate box or by entering the information requested. If an item does not apply to the property being documented, enter "N/A" for "not applicable." For functions, architectural classification, materials and areas of significance, enter only categories and subcategories from the instructions. Place additional entries and narrative items on continuation sheets (NPS Form 10-900a). Use a typewriter, word processor, or computer, to complete all items.

1. Name of Propertyhistoric name Pap Madison Cabinother names/site number n/a**2. Location**

street & number _____ [] not for publication

city or town Rapid City [] vicinitystate South Dakota code SD county Pennington code 103 zip code 57701**3. State/Federal Agency Certification**

As the designated authority under the National Historic Preservation Act, as amended, I hereby certify that this
☒ nomination ☐ request for determination of eligibility meets the documentation standards for registering properties in the
 National Register of Historic Places and meets the procedural and professional requirements set forth in 36 CFR Part 60. In
 my opinion, the property ☒ meets ☐ does not meet the National Register criteria. I recommend that this property be
 considered significant ☐ nationally ☐ statewide ☒ locally. (☐ See continuation sheet for additional comments.)

Signature of certifying official Jay D. Vogt

State Historic Preservation Officer

12-11-2007

Date

South Dakota State Historic Preservation Office

State or Federal agency and bureau

In my opinion, the property ☐ meets ☐ does not meet the National Register criteria.
 (☐ See continuation sheet for additional comments.)

Signature of certifying official/Title _____

Date _____

State or Federal agency and bureau _____

4. National Park Service Certification

I hereby certify that the property is:

- ☒ entered in the National Register
☐ See continuation sheet.
☐ determined eligible for the
 National Register
☐ See continuation sheet.
☐ determined not eligible for the
 National Register.
☐ removed from the National Register
☐ See continuation sheet.
☐ other, explain
☐ See continuation sheet.

Signature of the Keeper

Date of Action

for
Edson H. Beall2.19.08

Pap Madison Cabin
Name of Property

Pennington County, South Dakota
County/State

5. Classification

Ownership of Property

(Check as many boxes as apply)

- ☐ private
☒ public-local
☐ public-State
☐ public-Federal

Category of Property

(Check only one box)

- ☒ building(s)
☐ district
☐ site
☐ structure
☐ object

Number of Resources within Property

(Do not count previously listed resources.)

Contributing	Noncontributing	
1	0	buildings
0	0	sites
0	0	structures
0	0	objects
1	0	Total

Name of related multiple property listing.

(Enter "N/A" if property is not part of a multiple property listing.)

N/A

Number of contributing resources previously listed in the National Register.

0

6. Function or Use

Historic Function

(Enter categories from instructions)

Domestic/Single Dwelling

Current Functions

(Enter categories from instructions)

Vacant/Not in Use

7. Description

Architectural Classification

(Enter categories from instructions)

No Style

Materials

(Enter categories from instructions)

foundation Earth
walls Log
roof Wood Shingle
other

Narrative Description

(Describe the historic and current condition of the property on one or more continuation sheets.)

**National Register of Historic Places
Continuation Sheet****United States Department of the Interior
National Park Service**Section number 7 Page 1

Pennington County, South Dakota

DESCRIPTION

The Pap Madison Cabin is located in Rapid City, Pennington County, South Dakota. The cabin sits on a triangular piece of land owned by the City of Rapid City bordered by West Main Street, St. Joseph Street, and West Boulevard. The triangular land is a landscaped city park.

The Pap Madison Cabin is a hand-hewn log structure with an earthen floor and wood shingles. The gable roof has exposed poles in the eaves and the west elevation has a centered stone chimney. The windows openings are covered by mesh screens.

The façade (east elevation) has a slightly off-center wooden door. There is also a small interpretive plaque attached at eye level to the south of the door. The south elevation has a centered window. There is also a small sign reading "Pap' Madison Historic Cabin" next to this elevation. The west elevation has a centered stone chimney stack. The north elevation has a window located toward the northwest corner.

Pap Madison Cabin

Name of Property

Pennington County, South Dakota

County/State

8. Statement of Significance

Applicable National Register Criteria

(Mark "x" in one or more boxes for the criteria qualifying the property for National Register listing.)

- ☒ **A** Property is associated with events that have made a significant contribution to the broad patterns of our history.
- ☐ **B** Property is associated with the lives of persons significant in our past.
- ☒ **C** Property embodies the distinctive characteristics of a type, period, or method of construction or represents the work of a master, or possesses high artistic values, or represents a significant and distinguishable entity whose components lack individual distinction.
- ☐ **D** Property has yielded, or is likely to yield, information important in prehistory or history.

Criteria Considerations

(Mark "x" in all the boxes that apply.)

Property is:

- ☐ **A** owned by a religious institution or used for religious purposes.
- ☒ **B** removed from its original location.
- ☐ **C** a birthplace or grave.
- ☐ **D** a cemetery.
- ☐ **E** a reconstructed building, object, or structure.
- ☐ **F** a commemorative property.
- ☐ **G** less than 50 years of age or achieved significance within the past 50 years.

Narrative Statement of Significance

(Explain the significance of the property on one or more continuation sheets.)

9. Major Bibliographical References

Bibliography

(Cite the books, articles and other sources used in preparing this form on one or more continuation sheets.)

Previous documentation on file (NPS):

- ☐ preliminary determination of individual listing (36 CFR 67) has been requested
- ☐ previously listed in the National Register
- ☐ previously determined eligible by the National Register
- ☐ designated a National Historic Landmark
- ☐ recorded by Historic American Buildings Survey

- ☐ recorded by Historic American Engineering Record

Areas of Significance

(Enter categories from instructions)

Architecture

Exploration and Settlement

Periods of Significance

1876-1889

1889-1926

Significant Dates

1876

Significant Person(s)

(Complete if Criterion B is marked above).

n/a

Cultural Affiliation

n/a

Architect/Builder

Pap Madison - builder

Primary location of additional data:

- ☒ State Historic Preservation Office
- ☐ Other State Agency
- ☐ Federal Agency
- ☐ Local Government
- ☐ University
- ☐ Other

Name of repository:

**National Register of Historic Places
Continuation Sheet****United States Department of the Interior
National Park Service**Section number 8 Page 2

Pennington County, South Dakota

Statement of Significance

The Pap Madison Cabin is significant under Criteria A and C for the National Register of Historic Places. It is eligible under Criterion A for being the oldest structure in Rapid City and also for the role it played in the exploration and settlement of Rapid City and the Black Hills. It is also eligible under Criterion C for its hand-hewn log construction.

Historical Background

The Black Hills of South Dakota started to rise 62 million years ago and achieved their present size and appearance around 37 million years ago.¹ The uplift forms a dome shape roughly 120 by 60 miles in western South Dakota and eastern Wyoming. This unusual geological formation exposed several areas rich in mineral deposits. The concentration of accessible minerals in the area led to a mining boom that began in the last quarter of the 19th century.

The largest groups of American Indians present in South Dakota directly before white settlement were the Nakota, Dakota, and Lakota, known collectively as the Sioux. Anthropologists believe that the Sioux were pushed out of Minnesota onto the plains where they became the dominant group by the mid to late 1700s, although tribal creation stories tell of the Sioux inhabiting the area since time immemorial. The Dakota and Nakota lived primarily east of the Missouri River while the Lakota roamed the western half of the state. The Sioux were eventually forced onto reservations through a series of questionable treaties that opened up land for white settlement.

Rumors that gold existed in the Black Hills circulated for years before it was confirmed by an expedition led by General George Custer in 1874.² The discovery was soon sensationalized in the press generating an influx of prospectors into the region. The Black Hills had been forever promised to the Sioux in the Fort Laramie Treaty of 1868, however, the United States Army was unable and unwilling to remove the thousands of prospectors who poured into the hills following the discovery. As a result, the Sioux were forced to cede the Black Hills in another questionable treaty ratified in February of 1877.³

John Brennan and Samuel Scott, along with a small party of men, came to the area in February 1876. They camped in what is now known as Cleghorn Springs, did some exploring, and decided to lay out the site of present Rapid City. A square mile was measured off and the six blocks in the center were designated as a business section. Committees were appointed to bring in prospective merchants and their families to locate in the new settlement.⁴

History of the Pap Madison Cabin

Rufus "Pap" Madison built the cabin 1876 at the corner of Fifth and Rapid Streets, which was the center of the original six block town. Madison came to the hills in late 1875 or earlier 1876 and was present when Rapid City was laid out on 25 February 1876.⁵

¹ John Paul Gries. *Roadside Geology of the South Dakota*. (Missoula: MT, Mountain Press Publishing Company, 1996), 214.

² Watson Parker. *Gold in the Black Hills*. (Norman: OK, University of Oklahoma Press, 1966), 26.

³ Ibid, 140.

⁴ Dave Strain. *Black Hills Hay Camp: Images and Perspectives of Early Rapid City*. (Dakota West Books and Fenske Printing, 1989), 6.

⁵ Personal Correspondence, Reid Riner.

**National Register of Historic Places
Continuation Sheet****United States Department of the Interior
National Park Service**Section number 8 Page 3Pennington County, South Dakota

During the summer of 1876, the Lakota regularly raided the settlement in an attempt to push the settlers out of the Black Hills. The Black Hills, along with all of western South Dakota, had been promised to the Lakota in the Fort Laramie Treaty of 1868. During one of the raids Madison's dog was killed and his wagon destroyed. By August the raids had increased, causing all but 19 of the 200 settlers to head for the protection of Fort Pierre. Madison and the other 18 settlers who stayed built a blockhouse for protection just west of Madison's cabin.⁶

When the tension settled down and the Indians were forced to cede the Black Hills, Madison began farming 160 acres southwest of the original town. Madison sold the farm in 1889 and moved to Everett, Washington in 1892. John Brennan acquired Madison's cabin and the lot it sat on, which he would eventually pass on to his wife.⁷

The Fortnightly Club obtained permission from the city to move the cabin to Halley Park in 1926 after encouraging Mrs. John Brennan to donate it to the city as a reminder of "the old days." The Lions Club stepped in to move the cabin and had it rehabilitated by an old timer who understood the construction of log cabins. The cabin was used as a museum for many years until vandalism forced the removal of its contents. The contents of the cabin are now part of the Minnilusa Collection on display at the Journey Museum. The cabin was rehabilitated again in 1990 by the Boy Scouts of America Troop 55 with the material support of the Rapid City Parks Department.⁸

The Pap Madison Cabin is also significant for being the oldest building in Rapid City and for its hand-hewn log construction. The construction techniques and materials present on the cabin are from a building tradition representing the earliest white settlement in the Black Hills. Structures like the Pap Madison Cabin were the earliest structures built by the pioneers who first entered the Black Hills in the mid 1870s. The period in which the majority of the log cabins and structures were built in the Black Hills is relatively short. The mining boom accelerated the importation of technology into the region and by late 1876 there were already four sawmills operating in the Black Hills.⁹ By 1900, the vast majority of log structures being constructed in the Black Hills were at parks and resorts.¹⁰

There is no precise data on the number of extant log structures remaining in the state. Examples are found primarily in the Black Hills and on the homestead of some of the western counties. The South Dakota State Historic Preservation Plan identifies "claim era resources" as an endangered resource due to the majority of them having poor architectural integrity and for being functionally obsolete. The Pap Madison has integrity and is still functioning as an educational tool in the community.

Rapid City is the second largest city in South Dakota and also one of the oldest communities in the state. The Pap Madison Cabin is the oldest building in Rapid City and one of the few links to its homesteading era. Many of the original artifacts associated with the cabin are also located nearby at the Journey Museum.

⁶ Ibid.

⁷ Ibid.

⁸ Ibid.

⁹ David Erpsted and David Wood. *Building South Dakota: A Historical Survey of the States Architecture to 1945*. (Pierre: SD, South Dakota State Historical Society Press, 1997), 20.

¹⁰ Ibid, 20

**National Register of Historic Places
Continuation Sheet****United States Department of the Interior
National Park Service**Section number 8 Page 4Pennington County, South Dakota

The periods of significance for the Pap Madison Cabin are 1876-1889 and 1889-1926. The first set of dates corresponds with the building and residency of Pap Madison, who lived in the cabin until 1889. In 1889, the cabin was purchased by John Brennan, the founder of Rapid City. In 1926, Mrs. John Brennan donated the cabin to the city.

The Pap Madison retains good integrity in materials, workmanship, and design. Although the cabin was relocated a few blocks to the west in 1926, it still retains its integrity in feeling and association in its current location in Halley Park. The cabin today looks very much like it did during its period of significance.

Conclusion

The Pap Madison Cabin is significant under Criteria A and C for the National Register of Historic Places. It is eligible under Criterion A for being the oldest structure in Rapid City and also for the role it played in the exploration and settlement of Rapid City and the Black Hills. It is also eligible under Criterion C as a hand-hewn log cabin.

**National Register of Historic Places
Continuation Sheet****United States Department of the Interior
National Park Service**

Pennington County, South Dakota

Section number 9 Page 5**BIBLIOGRAPHY**

Erpestad, David and David Wood. *Building South Dakota*. South Dakota State Historical Society Press, Pierre: SD, 1997.

Riner, Reid. Personal Correspondence.

Strain, David E. *Black Hills Hay Camp: Images and Perspectives of Early Rapid City*. Dakota West Books and Fenske Printing Inc., Rapid City: SD, 1989.

Pap Madison Cabin
Name of Property

Pennington County, South Dakota
County/State

10. Geographical Data

Acreage of Property less than one

UTM References

(Place additional UTM references on a continuation sheet.)

1. 13 641073 4882488
Zone Easting Northing

2. Zone Easting Northing

3. Zone Easting Northing

4. Zone Easting Northing

[] See continuation sheet

Verbal Boundary Description

(Describe the boundaries of the property on a continuation sheet.)

Boundary Justification

(Explain why the boundaries were selected on a continuation sheet.)

11. Form Prepared By

name/title Chris B. Nelson

organization SD State Historic Preservation Office date 26 September 2007

street & number 900 Governors Drive telephone 605-773-3103

city or town Pierre state SD zip code 57501

Additional Documentation

Submit the following items with the completed form:

Continuation Sheets

Maps

A **USGS map** (7.5 or 15 minute series) indicating the property's location.

A **Sketch map** for historic districts and properties having large acreage or numerous resources.

Photographs

Representative **black and white photographs** of the property.

Additional Items

(Check with the SHPO or FPO for any additional items)

Property Owner

(Complete this item at the request of SHPO or FPO.)

name City of Rapid City

street & number 300 6th Street telephone 605-394-4120

city or town Rapid City state SD zip code 57701

Paperwork Reduction Act Statement: This information is being collected for applications to the National Register of Historic Places to nominate properties for listing or determine eligibility for listing, to list properties, and to amend existing listings. Response to this request is required to obtain a benefit in accordance with the National Historic Preservation Act, as amended (16 U.S.C. 470 et seq.).

Estimated Burden Statement: Public reporting burden for this form is estimated to average 18.1 hours per response including time for reviewing instructions, gathering and maintaining data, and completing and reviewing the form. Direct comments regarding this burden estimate or any aspect of this form to the Chief, Administrative Services Division, National Park Service, P.O. Box 37127, Washington, DC 20013-7127; and the Office of Management and Budget, Paperwork Reduction Projects (1024-0018), Washington, DC 20503.

**National Register of Historic Places
Continuation Sheet****United States Department of the Interior
National Park Service**Section number 10 Page 6Pennington County, South Dakota

GEOGRAPHICAL DATA**VERBAL BOUNDARY DESCRIPTION**

The boundary is an imaginary line encompassing the cabin. It begins at a point 3 feet northwest of the northwest corner and runs east to a point 3 feet northeast of the northeast corner. The line then runs south to a point 3 feet off the southeast corner and then west to a point 3 feet off of the southwest corner. The line then runs north to the starting point.

BOUNDARY JUSTIFICATION

The boundary is an imaginary line encompassing only the cabin. The cabin is located within Halley Park in Rapid City, South Dakota. The cabin is the only structure in Halley Park being nominated.

**National Register of Historic Places
Continuation Sheet****United States Department of the Interior
National Park Service**Section number ____ Page 7Pennington County, South Dakota

PHOTOGRAPH LOG

The following information pertains to photograph numbers 1-2 except as noted:

Name of Property: Pap Madison Cabin**County, State:** Pennington County, South Dakota**Photographer:** Chris B. Nelson**Date of Photographs:** 7 August 2007**Location of Original:** South Dakota State Historic Preservation Office, Pierre, SD

Photo No.	Photographic Information
-----------	--------------------------

1	Northwest Pap Madison Cabin (PapMadisonCabin_PenningtonCounty_SD1tiff)
2	Southeast Pap Madison Cabin (PapMadisonCabin_PenningtonCounty_SD2tiff)



Pop Madison Cabin
Pennington County, SD

Chris Nelson
7 August 2007
SD SHPO
Northwest

Photo 1 of 2

Pop Madison Cabin - Pennington County - SD 1.tiff



Pap Madison Cabin
Pennington County SD
Chris Nelson

7 August 2007

SD SHPD
Southeast

Photo 2 of 2

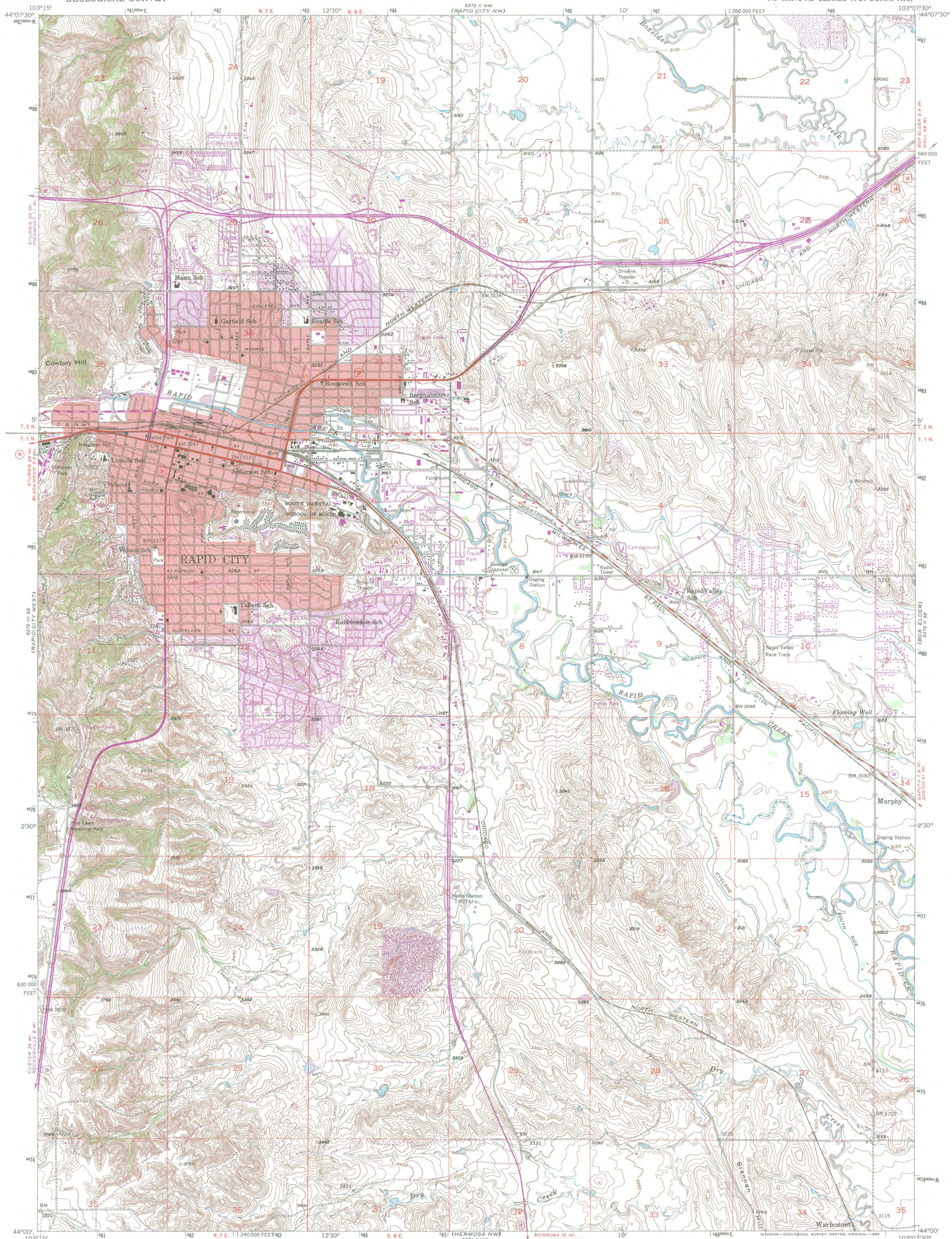
Pap Madison Cabin - Pennington County - SD 2 of 2

UNITED STATES
DEPARTMENT OF THE INTERIOR
GEOLOGICAL SURVEY

RAPID CITY EAST QUADRANGLE
SOUTH DAKOTA—PENNINGTON CO.
7.5 MINUTE SERIES (TOPOGRAPHIC)

Pap Madison Cabin
Pennington County
South Dakota

Z=13
E=641073
N=4882488



Mapped, edited, and published by the Geological Survey

Control by USGS and USC&GS

Topography from aerial photographs by multiplex methods

Aerial photographs taken 1952. Field check 1953

Polyconic projection. 1927 North American datum

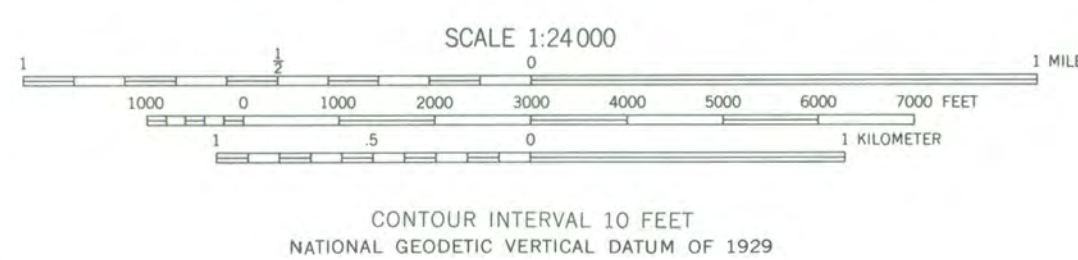
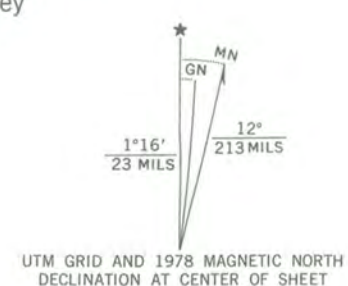
10,000-foot grid based on South Dakota coordinate system, south zone

Red tint indicates areas in which only landmark buildings are shown

1000-meter Universal Transverse Mercator grid ticks, zone 13, shown in blue

Revisions shown in purple compiled from aerial photographs taken 1976 and other source data. This information not field checked. Map edited 1978

Purple tint indicates extension of urban areas



ROAD CLASSIFICATION	
Primary highway, all weather, hard surface	Light-duty road, all weather, improved surface
Secondary highway, all weather, hard surface	Unimproved road, fair or dry weather
Interstate Route	U.S. Route
	State Route

RAPID CITY EAST, S. DAK.
44103-A2-TF-024

1953
PHOTOREVISED 1978
DMA 5372 II SW—SERIES V873

THIS MAP COMPLIES WITH NATIONAL MAP ACCURACY STANDARDS
FOR SALE BY U.S. GEOLOGICAL SURVEY, DENVER, COLORADO 80225, OR RESTON, VIRGINIA 22092
A FOLDER DESCRIBING TOPOGRAPHIC MAPS AND SYMBOLS IS AVAILABLE ON REQUEST

To place on the predicted North American Datum 1983, move the projection lines 6 meters north and 41 meters east as shown by dashed corner ticks



UNITED STATES DEPARTMENT OF THE INTERIOR
NATIONAL PARK SERVICE

NATIONAL REGISTER OF HISTORIC PLACES
EVALUATION/RETURN SHEET

REQUESTED ACTION: NOMINATION

PROPERTY Madison, Pap, Cabin
NAME:

MULTIPLE
NAME:

STATE & COUNTY: SOUTH DAKOTA, Pennington

DATE RECEIVED: 1/11/08 DATE OF PENDING LIST: 1/30/08
DATE OF 16TH DAY: 2/14/08 DATE OF 45TH DAY: 2/24/08
DATE OF WEEKLY LIST:

REFERENCE NUMBER: 08000054

REASONS FOR REVIEW:

APPEAL: N DATA PROBLEM: N LANDSCAPE: N LESS THAN 50 YEARS: N
OTHER: N PDIL: N PERIOD: N PROGRAM UNAPPROVED: N
REQUEST: N SAMPLE: N SLR DRAFT: N NATIONAL: N

COMMENT WAIVER: N

☒ ACCEPT ☐ RETURN ☐ REJECT 2.19.08 DATE

ABSTRACT/SUMMARY COMMENTS:

**red in the
National Register**

RECOM./CRITERIA _____

REVIEWER _____ DISCIPLINE _____

TELEPHONE _____ DATE _____

DOCUMENTATION see attached comments Y/N see attached SLR Y/N

If a nomination is returned to the nominating authority, the nomination is no longer under consideration by the NPS.



Reed, Roger <roger_reed@nps.gov>

Pap Madison Cabin

5 messages

Reed, Roger <roger_reed@nps.gov>
To: Chris Nelson <chrisb.nelson@state.sd.us>

Thu, Nov 30, 2017 at 9:55 AM

Chris,

Do I understand that the request for removal from NR is based upon the fact that the cabin was moved to a new location without prior approval from NPS, making delisting automatic. In other words, not based on changes to the cabin on its new site.

Also, I notice in the nomination it does not say when it was first moved to the park.

Roger

Roger G. Reed, Historian
National Register and National Historic Landmarks Programs
1849 C St. NW
Mail Stop 7228
Washington, D.C. 20240
202-354-2278

Nelson, Chris (CHC) <ChrisB.Nelson@state.sd.us>
To: "Reed, Roger" <roger_reed@nps.gov>

Thu, Nov 30, 2017 at 1:23 PM

Hi Roger,

Yes, that's the correct assessment. I prepared an amendment for the move. Before submitting it, I discussed the situation with Linda McClellan. That dialogue led to the conclusion that it would not meet Consideration B, so I did not submit an amendment for approval of the move.

Thanks,

Chris

From: Reed, Roger [mailto:roger_reed@nps.gov]
Sent: Thursday, November 30, 2017 8:56 AM
To: Nelson, Chris (CHC)
Subject: [EXT] Pap Madison Cabin

[Quoted text hidden]

Reed, Roger <roger_reed@nps.gov>
To: "Nelson, Chris (CHC)" <ChrisB.Nelson@state.sd.us>

Thu, Nov 30, 2017 at 2:35 PM

Was it moved within the park?

Roger G. Reed, Historian
National Register and National Historic Landmarks Programs
1849 C St. NW
Mail Stop 7228
Washington, D.C. 20240
202-354-2278

[Quoted text hidden]

Nelson, Chris (CHC) <ChrisB.Nelson@state.sd.us>
To: "Reed, Roger" <roger_reed@nps.gov>

Thu, Nov 30, 2017 at 2:56 PM

No. It was moved about three-quarters of a mile to the Journey Museum (out in front of it, red arrow points to the new location).



Was originally at Halley Park on the left, moved NE to museum.



From: Reed, Roger [mailto:roger_reed@nps.gov]
Sent: Thursday, November 30, 2017 1:35 PM
To: Nelson, Chris (CHC)
Subject: Re: [EXT] Pap Madison Cabin

[Quoted text hidden]

image004.png
3K

Reed, Roger <roger_reed@nps.gov>
To: "Nelson, Chris (CHC)" <ChrisB.Nelson@state.sd.us>

Thu, Nov 30, 2017 at 3:22 PM

Thanks, this completes the story for our review. I received a call from the local radio station and wanted to be sure I understand.

Roger G. Reed, Historian
National Register and National Historic Landmarks Programs
1849 C St. NW
Mail Stop 7228
Washington, D.C. 20240
202-354-2278

[Quoted text hidden]