



UNION LEAGUE OF AMERICA HALL  
MEAGHER COUNTY MONTANA

VIEW TO SOUTHEAST

PHOTOGRAPHER & NEGATIVE:

VERLE RADEMACHER, MEAGHER COUNTY NEWS

SEPTEMBER 1997



UNION LEAGUE OF AMERICA HALL  
MEACHER COUNTY MONTANA

VIEW TO EAST-NORTHEAST

PHOTOGRAPHER AND NEGATIVE:

VEELE RADEMACHER, MEACHER COUNTY NEWS

SEPTEMBER 1997



UNION LEAGUE OF AMERICA HALL  
MEAGHER COUNTY MONTANA

VIEW TO NORTH NORTHEAST

PHOTOGRAPHER & NEGATIVE

VERIE RADEMACHER, MEAGHER COUNTY NEWS

SEPTEMBER 1997



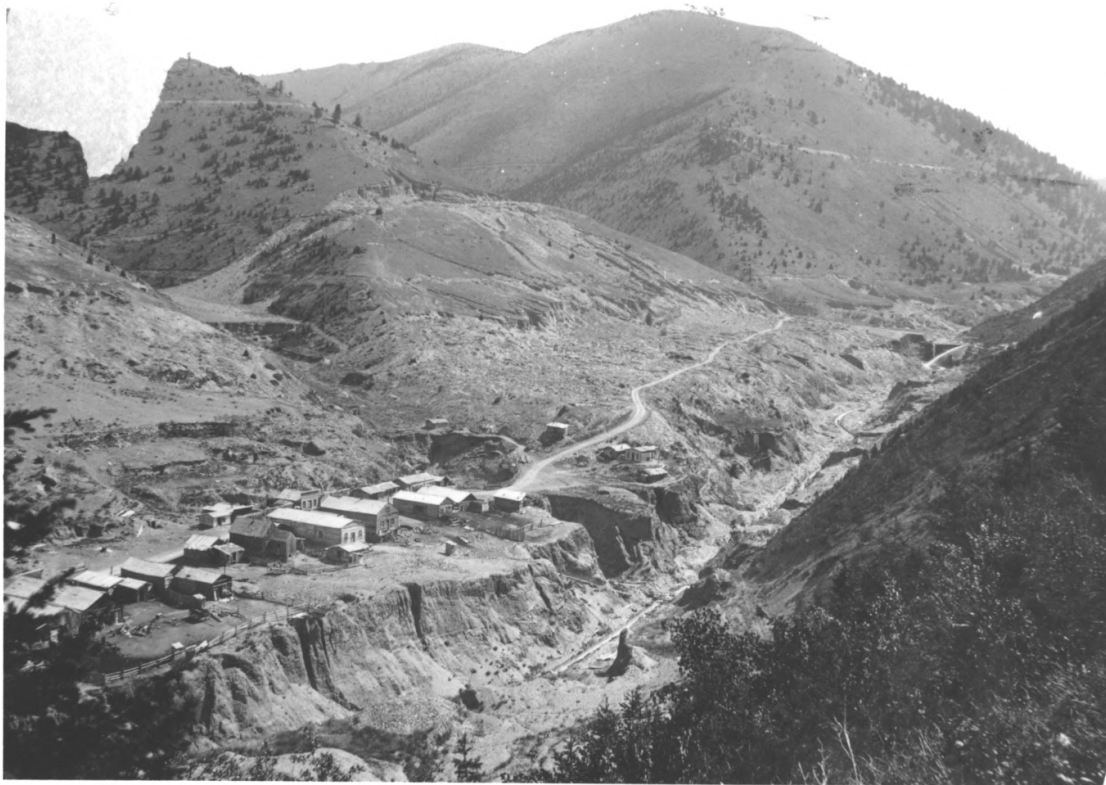
UNION LEAGUE OF AMERICA HALL  
MEACHER COUNTY MONTANA

VIEW TO SOUTHEAST

PHOTOGRAPHER & NEGATIVE:

VERLE RADEMACHER, MEACHER COUNTY NEWS FILES  
SEPTEMBER 1997 (PHOTO C. 1950)





"Diamond City, Montana, ca 1870-71. 1943, one  
house, high-front one was all that remained."

946-724

UNION LEAGUE OF AMERICA HALL  
MEAGHER COUNTY MONTANA

HISTORIC PHOTOGRAPH OF DIAMOND CITY 1870-71

(BUILDING IS NOT VISIBLE)



"Diamond City, Montana, 1889. Cattle owned by  
Joseph Emhoff." 946-725