



1. BORDENTOWN MANUAL TRAINING ^{and} INDUSTRIAL SCHOOL.

2. BORDENTOWN, NEW JERSEY

3. PHOTO BY: NAN PILLSBURY, Ph.D.

Burlington County

4. TAKEN: OCTOBER 8, 1995

5. NEG. WITH: NAN PILLSBURY, Ph.D.

401 MILL ST

MOORESTOWN, NJ 08057

(609) 235-6080

6. VOCATIONAL BUILDING AT MANUAL TRAINING
SCHOOL, WESTERLY ^{and} SOUTHERLY FACADES.

#1 of 32



1. BORDENTOWN MANUAL TRAINING & INDUSTRIAL SCHOOL.

2. BORDENTOWN, NEW JERSEY

3. PHOTO BY: NAN PILLSBURY, PH. D

Burlington County

4. TAKEN: NOVEMBER 12, 1995

5. NEG. WITH: NAN PILLSBURY, PH. D

401 MILL ST.
MOORESTOWN, NJ, 08057
(609) 235-6080

6. WESTERLY FACADE OF RICE HALL (BOYS' DORMITORY).

2 of 32



RICE HALL

1. BORDENTOWN MANUAL TRAINING
INDUSTRIAL SCHOOL

2. BORDENTOWN, NEW JERSEY

3. PHOTO BY: NAN PILLSBURY, PH.D.

4. TAKEN: OCTOBER 8, 1995

5. NEG. WITH: NAN PILLSBURY, PH.D.
401 MILL ST.

MOORESTOWN, NJ 08057

(609) 235-6080

6. MAIN ENTRANCE (WESTERLY FACADE)
TO RICE HALL (BOYS DORMITORY).

Burlington
County

#3 of 32



1. BORDENTOWN MANUAL TRAINING ² INDUSTRIAL SCHOOL.
2. BORDENTOWN, NEW JERSEY

3. PHOTO BY: NAN PILLSBURY, Ph.D.

Burlington County

4. TAKEN: NOVEMBER 12, 1995.

5. NEG. WITH: NAN PILLSBURY, Ph.D.

401 MILL ST.

MOORESTOWN, NJ 08057

(609) 235-6080

6. EASTERLY SIDE OF NORTH WING, RICE HALL, EASTERN
BUILDING EXTENSION, LEFT.

#4 of 32



1. BORDENTOWN MANUAL TRAINING AND INDUSTRIAL SCHOOL.
2. BORDENTOWN, NEW JERSEY.
3. PHOTO BY: NAN PILLSBURY, Ph.D. Burlington County
4. TAKEN: JULY 29, 1995.
5. NEG. WITH: NAN PILLSBURY, Ph.D.
401 MILL ST.
MOORESTOWN, NJ 08057
(609) 235-6080
6. RICE HALL EASTERN EXTENSION (MEETING ROOM/CHAPEL)
WITH PALLADIAN WINDOW.



1. BORDENTOWN MANUAL TRAINING and INDUSTRIAL SCHOOL.
2. BORDENTOWN, NEW JERSEY
3. PHOTO BY: NAN PILLSBURY, PH.D.
4. TAKEN: OCTOBER 8, 1995.
5. NEG. WITH: NAN PILLSBURY, PH.D.

Burlington County

401 MILL ST.

MOORESTOWN, NJ 08057

(609) 235-6080

6. SOUTHERLY FACADE RICE HALL WITH TWO-STORY PORCH/BALCONY.



1. BORDENTOWN MANUAL TRAINING and INDUSTRIAL SCHOOL.
2. BORDENTOWN, NEW JERSEY.
3. PHOTO BY: NAN PILLSBURY, Ph.D.
4. TAKEN: NOVEMBER 12, 1995.
5. NEG. WITH: NAN PILLSBURY, Ph.D.
401 MILL ST
MOORESTOWN, NJ 08057
(609) 235-6080
6. MAIN ENTRANCE on SOUTHERLY
FAÇADE of GREGORY HALL.

Burlington County



1. BORDENTOWN MANUAL TRAINING & INDUSTRIAL SCHOOL.
2. BORDENTOWN, NEW JERSEY.
3. PHOTO BY: NAN PILLSBURY, Ph. D. Burlington County
4. TAKEN: OCTOBER 8, 1995
5. NEG. WITH: NAN PILLSBURY, Ph. D.
401 MILL ST.
MOORESTOWN, NJ 08057
6. WESTERLY END OF GREGORY HALL.



1. BORDENTOWN MANUAL TRAINING & INDUSTRIAL SCHOOL.

2. BORDENTOWN NEW JERSEY

3. PHOTO BY: NAN PILLSBURY, PH. D

Burlington County

4. TAKEN: NOVEMBER 12, 1995

5. NEG. WITHINAN PILLSBURY, PH. D.

401 MILL ST

MOORESTOWN, NJ 08057

(609) 235-6080

6. SOUTHERLY & EASTERLY FACADES OF IRONSIDES.
PRINCIPAL'S HOUSE, LATER AN OFFICE BUILDING.



1. BORDENTOWN MANUAL TRAINING & INDUSTRIAL SCHOOL.

2. BORDENTOWN, NEW JERSEY

3. PHOTO BY: NAN PILLSBURY, Ph.D.

Burlington County

4. TAKEN: NOVEMBER 12, 1995

5. NEG. WITH: NAN PILLSBURY, Ph.D.

401 MILL ST.

MOORESTOWN, NJ 08057

(609) 235-6080

6. SERVICES BUILDING, CONTAINING AUDITORIUM, GYMNASIUM
and FOOD SERVICES AREAS. SOUTHERLY & EASTERLY FACADES.



1. BORDENTOWN MANUAL TRAINING ^{AND} INDUSTRIAL SCHOOL.
2. BORDENTOWN, NEW JERSEY.
3. PHOTO BY: NAN PILLSBURY, PH. D. Burlington County
4. TAKEN: OCTOBER 8, 1995
5. NEG. WITH: NAN PILLSBURY, PH. D.
401 MILL ST.
MOORESTOWN, NJ 08057
(609) 235-6080
6. EASTERLY AUDITORIUM WING of SERVICES BUILDING,



1. BORDENTOWN MANUAL TRAINING & INDUSTRIAL SCHOOL.
2. BORDENTOWN, NEW JERSEY.
3. PHOTO BY: NAN PILLSBURY, PH.D. Burlington County
4. TAKEN: JULY 29, 1995
5. NEG. WITH: NAN PILLSBURY, PH.D.
401 MILL ST.
MOORESTOWN, NJ 08057
(609) 235-6088
6. ADMINISTRATION BUILDING at MANUAL TRAINING SCHOOL.
MAIN ENTRANCE w/ COLUMNS, EASTERN FACADE.



1. BORDENTOWN MANUAL TRAINING and INDUSTRIAL SCHOOL.
2. BORDENTOWN, NEW JERSEY.
3. PHOTO BY: NAN PILLSBURY, Ph. D.
4. TAKEN: JULY 29, 1995
5. NEG. WITH: NAN PILLSBURY, Ph. D.
401 MILL ST.
MOORESTOWN, NJ 08057
(609)235-6080
6. SOUTHERLY FACADE of ADMINISTRATION BUILDING.

Burlington County

#13 of 32



1. BORDENTOWN MANUAL TRAINING and INDUSTRIAL SCHOOL.
2. BORDENTOWN, NEW JERSEY.
3. PHOTO BY: NAN PILLSBURY, Ph.D.
4. TAKEN: JULY 29, 1995
5. NEG. WITH NAN PILLSBURY, Ph.D.
401 MILL St.
MOORESTOWN, NJ 08057
(609) 235-6080
6. SOUTHERLY CORNER of EASTERN FACADE.
ADMINISTRATION BUILDING

Burlington County

14 of 32



1. BORDENTOWN MANUAL TRAINING ^{Eng} INDUSTRIAL SCHOOL.
2. BORDENTOWN, NEW JERSEY.
3. PHOTO BY: NAN PILLSBURY, Ph.D. Burlington County
4. TAKEN: JULY 29, 1995
5. NEG. WITH: NAN PILLSBURY, Ph.D.
401 MILL ST.
MOORESTOWN, NJ 08057
(609) 235-6080
6. HAYES HALL: 1965 GIRLS' DORMITORY WHICH REPLACED
FIRE-DESTROYED BUILDING.



1. BORDENTOWN MANUAL TRAINING & INDUSTRIAL SCHOOL.
2. BORDENTOWN, NEW JERSEY
3. PHOTO BY: NAN PILLSBURY, PH.D. Burlington County
4. TAKEN: NOVEMBER 12, 1995
5. NEG. WITH: NAN PILLSBURY, PH.D.

401 MILL ST.

MOORESTOWN, NJ 08057

(609) 235-6080

6. SOUTHERLY & EASTERLY FACADES of LAUNDRY BUILDING



1. BORDENTOWN MANUAL TRAINING ^{Eng} INDUSTRIAL SCHOOL.
2. BORDENTOWN, NEW JERSEY
3. PHOTO BY: NAN PILLSBURY, PH. D. Burlington County
4. TAKEN: NOVEMBER 12, 1995
5. NEG. WITH: NAN PILLSBURY, PH. D.

401 MILL ST.
MOORESTOWN, NJ 08057
(609) 235-6080

6. VALENTINE HALL FRONT OR NORTHERLY. FACADE WITH
COLUMNED MAIN ENTRANCE. EASTERLY FACADE, LEFT.



1. BORDENTOWN MANUAL TRAINING & INDUSTRIAL SCHOOL.
2. BORDENTOWN, NEW JERSEY.
3. PHOTO BY: NAN PILLSBURY, Ph.D. Burlington County
4. TAKEN: OCTOBER 8, 1995
5. NEG. WITH: NAN PILLSBURY, Ph.D.
401 MILL ST.
MOORESTOWN, NJ 08057
(609) 235-6080
6. REAR of VALENTINE HALL (GIRLS' DORMITORY) SHOWING
WESTERLY & SOUTHERLY FACADES.



1. BORDENTOWN MANUAL TRAINING ^{and} INDUSTRIAL SCHOOL.
2. BORDENTOWN, NEW JERSEY.
3. PHOTO BY: NAN PILLSBURY, Ph.D. Burlington County
4. TAKEN: NOVEMBER 12, 1995
5. NEG. WITH: NAN PILLSBURY, Ph.D.
401 MILL ST,
MOORESTOWN, NJ 08057
(609) 235-6080
6. WERNER HOUSE GROUP HOME, SOUTH OF LAUNDRY BUILDING.



1. BORDENTOWN MANUAL TRAINING INDUSTRIAL School.
2. BORDENTOWN, NEW JERSEY.
3. PHOTO BY: VAN PILLSBURY, Ph. D. Burlington County
4. TAKEN: OCTOBER 8, 1995
5. NEG. WITH A: VAN PILLSBURY, Ph. D.
401 MILL St.
MOORESTOWN, NJ 08057
(609) 235-6080
6. WESTERLY HALF OF ATHLETIC FIELD/PARADE GROUND.



1. BORDENTOWN MANUAL TRAINING & INDUSTRIAL SCHOOL.
2. BORDENTOWN, NEW JERSEY.
3. PHOTO BY: NAN PILLSBURY, Ph.D. Burlington County
4. TAKEN: OCTOBER 8, 1995.
5. NEG. WITH: NAN PILLSBURY
401 MILL ST.
MOORESTOWN, NJ 08057
6. EASTERLY HALF OF ATHLETIC FIELD / PARADE GROUND.

21 of 32



1. NEW JERSEY MANUAL TRAINING ^{AND} INDUSTRIAL SCHOOL FOR
2. BORDENTOWN, NEW JERSEY COLORED YOUTH

3. PHOTO BY: NAN PILLSBURY, P.H.D.

Burlington County

4. TAKEN: OCTOBER 12, 1946

5. NEG. WITH: NAN PILLSBURY, P.H.D.
401 MILL ST.
MOORESTOWN, NJ 08057
(609) 235-6080

6. AMPHITHEATER, LOCATED BEHIND (SE) OF VALENTINE HALL.



1. NEW JERSEY MANUAL TRAINING ^{AND} INDUSTRIAL SCHOOL for
2. BORDENTOWN, NEW JERSEY COLORED YOUTH.
3. PHOTO BY: NAN PILLSBURY, PH. D.
4. TAKEN: OCTOBER 12, 1996
5. NEG. WITH: NAN PILLSBURY, PH. D.
401 MILL St.
MOORESTOWN, NJ 08057
(609) 235-6080
6. MAINTENANCE BUILDING, SHOWING SOUTHERLY ^{AND}
EASTERLY FACADES.

Burlington County

#23 of 32



1. NEW JERSEY MANUAL TRAINING and INDUSTRIAL SCHOOL for
2. BORDENTOWN, NEW JERSEY
3. PHOTO BY: NAN PILLSBURY, Ph.D.] COLORED YOUTH.
4. TAKEN: OCTOBER 12, 1996
5. NEG. WITH: NAN PILLSBURY, Ph.D.
401 MILL St.
MOORESTOWN, NJ 08057
(609) 235-6000
6. PAVILION, NORTHERLY and WESTERLY FACADES.

Burlington
County

#24 of 32

#24

18



1. NEW JERSEY MANUAL TRAINING [&] INDUSTRIAL SCHOOL FOR
2. BORDENTOWN, NEW JERSEY COLORED YOUTH

3. PHOTO BY: NAN PILLSBURY, Ph.D.

4. TAKEN: OCTOBER 12, 1996

Burlington County

5. NEG. WITH: NAN PILLSBURY, Ph.D.
401 MILL ST
MOORESTOWN, NJ 08057
(609) 235-6080

6. SLEEP CABINS, LOCATED SOUTHWESTERLY [&] ACROSS A FIELD
FROM THE PAVILION BUILDING. EASTERLY [&] NORTHERLY FACADES.

#25 of 32



1. NEW JERSEY MANDAL TRAINING & INDUSTRIAL SCHOOL for
2. BORDENTOWN, NEW JERSEY, COLORED YOUTH.

3. PHOTO BY: NAN PILSBURY, Ph.D.

Burlington County

4. TAKEN: OCTOBER 12, 1996.

5. NEG. WITH: NAN PILSBURY, Ph.D.

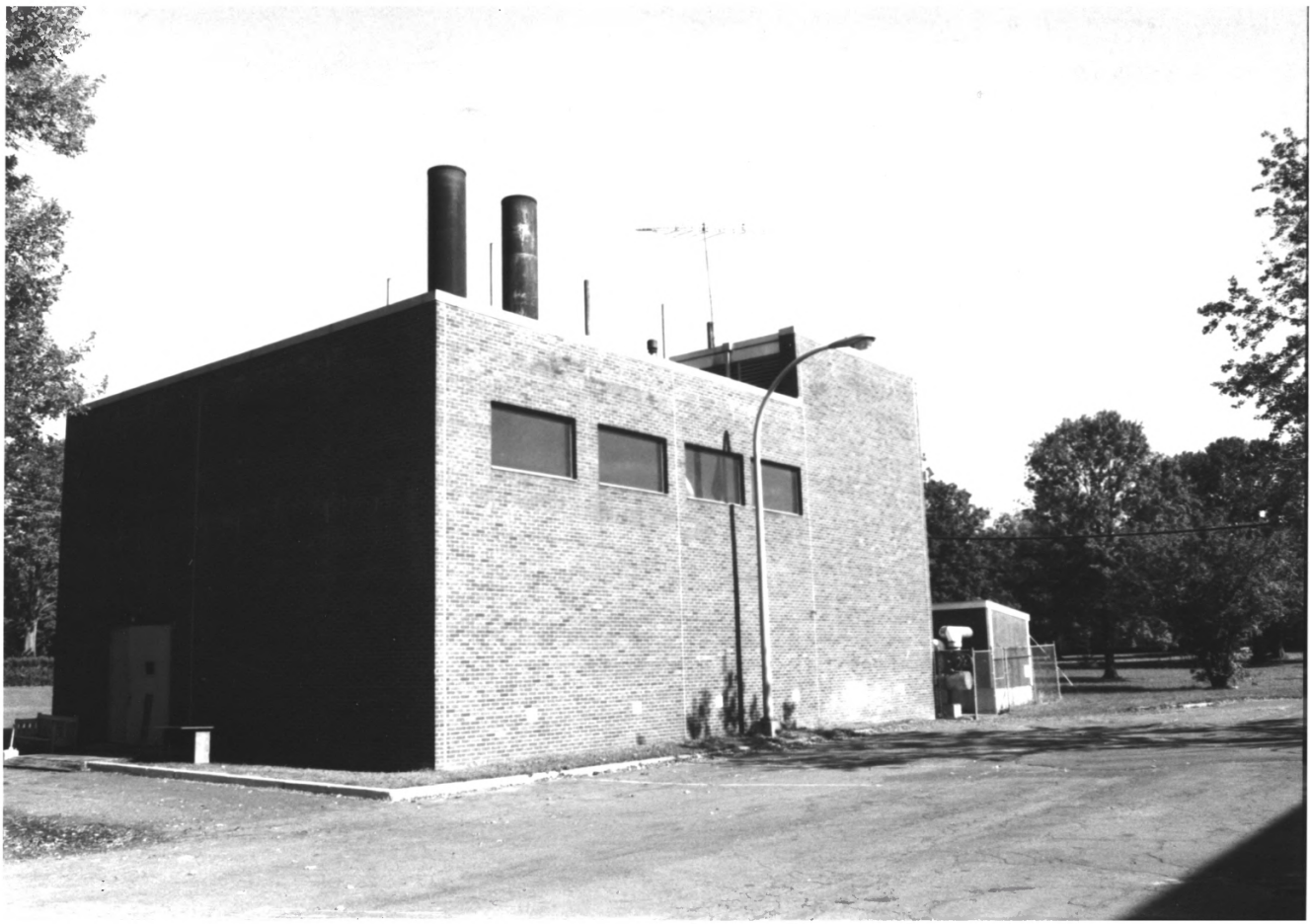
401 MILL ST.

MOORESTOWN, NJ 08057

(609) 235-6080

6. NORTHERLY and WESTERLY FACADES of TRAMBURG UNIT.

#26 of 32



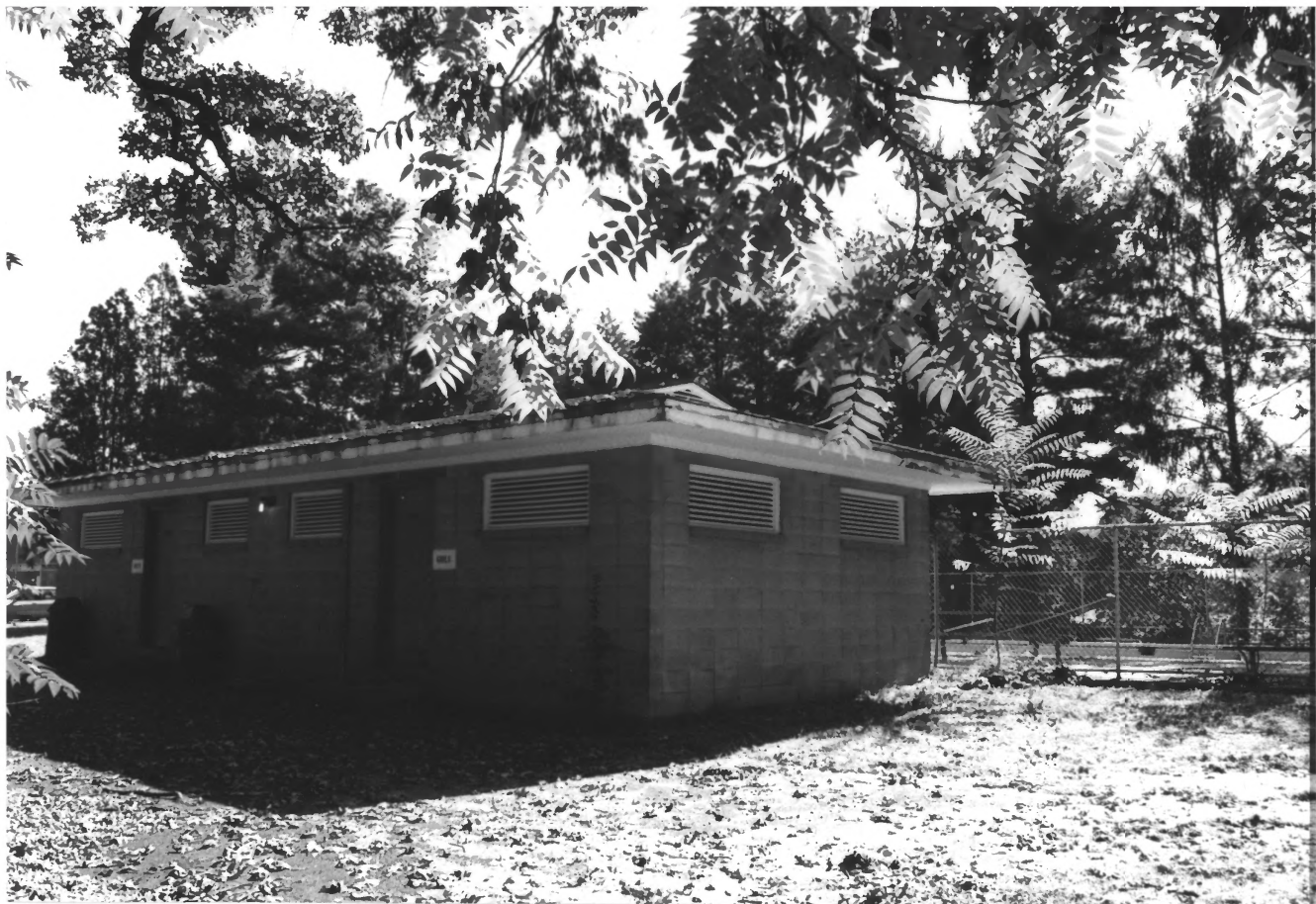
1. NEW JERSEY MANUAL TRAINING and INDUSTRIAL SCHOOL for
2. BORDENTOWN, NEW JERSEY
3. PHOTO BY: NAN PILLSBURY, Ph. D.
4. TAKEN: OCTOBER 12, 1996
5. NEG WITH: NAN PILLSBURY, Ph. D.

COLORED YOUTH

Burlington County

401 MILL ST
MOORESTOWN, NJ 08057
(609) 235-6080

6 = POWER PLANT, SOUTHERLY and EASTERLY FACADES,
LOCATED ACROSS FROM TRAM BURE.



1. NEW JERSEY MANUAL TRAINING and INDUSTRIAL SCHOOL for
2. BORDENTOWN, NEW JERSEY POLORED YOUTH

3. PHOTO BY: NANN PILLSBURY, PH.D.

4. TAKEN: OCTOBER 12, 1956

Burlington County

5. NEG. WITH: NANN PILLSBURY, PH.D.

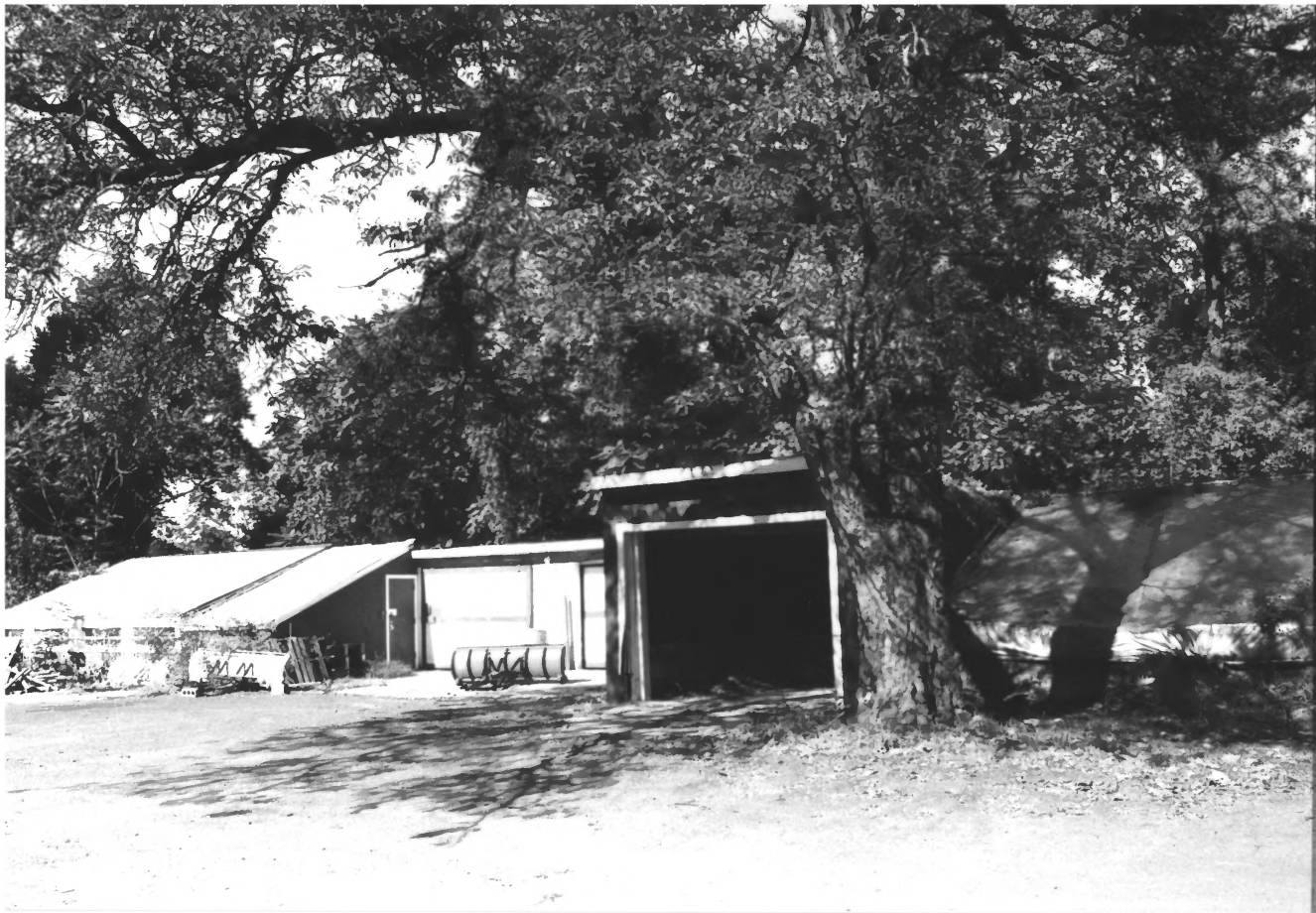
401 MILL ST.
MOORESTOWN NJ 08057
(609) 235-6080

6. BATH HOUSE, WESTERLY and SOUTHERLY FACADES.
FENCE TO RIGHT SURROUNDS POOL AREA.

#28 of 32



1. NEW JERSEY MANUAL TRAINING and INDUSTRIAL SCHOOL for
2. BORDENTOWN, NEW JERSEY COLORED YOUTH
3. PHOTO BY: NAN PILLSBURY, Ph. D. Burlington County
4. TAKEN: OCTOBER 12, 1996
5. NEG. WITH: NAN PILLSBURY, Ph. D.
401 MILL ST.
MOORESTOWN, NJ 08057
(609) 235-6080
6. SMALL ENVIRONMENTAL PROTECTION BUILDING
TO LEFT (HEATER BUILDING for GREENHOUSE), LARGE
GREENHOUSE BUILDING, MIDDLE, WESTERLY and SOUTHERLY
FACADES. WATER TOWER TO REAR of BOTH BUILDINGS.



1. NEW JERSEY MANUAL TRAINING AND INDUSTRIAL SCHOOL for
2. BORDENTOWN, NEW JERSEY. COLORED YOUTH
3. PHOTO BY: NAN PILLSBURY, Ph.D. Burlington County
4. TAKEN: OCTOBER 12, 1996
5. NEG. WITH: NAN PILLSBURY, Ph.D.
401 MILL ST.
MOORESTOWN, NJ 08057
(609) 235-6080
6. EASTERLY FACADES of STORAGE for EQUIPMENT and
ROAD SALT/SAND SHED.



1. NEW JERSEY MANUAL TRAINING ^{and} INDUSTRIAL SCHOOL for
2. BORDENTOWN, NEW JERSEY COLORED YOUTH
3. PHOTO BY: NAN PILLSBURY, Ph.D. Burlington County
4. TAKEN: OCTOBER 12, 1996
5. NEG. WITH: NAN PILLSBURY, Ph.D.
401 MILL ST.
MOORESTOWN, NJ 08057
(609) 235-6080
6. CHLORINATION UNIT ^{and} SEWER COLLECTION UNITS,
SOUTHERLY VIEW.



1. NEW JERSEY MANUAL TRAINING and INDUSTRIAL SCHOOL for
 2. BORDENTOWN, NEW JERSEY
 3. PHOTO BY: NAN PILLSBURY, Ph.D. COLORED YOUTH
 4. TAKEN: NOVEMBER 17, 1996
 5. NEG. WITH: NAN PILLSBURY, Ph.D.
401 MILL ST.
MOORESTOWN, NJ 08057
(609) 235-6080
- b. LIFT STATION for SEWAGE DISPOSAL.

Burlington County

#32 of 32