




George St. Bridge, Aurora,
Ind. Photo Bob Markwalter/
Les Baker, May, 1983, neg.
Markwalter, Rt 2, Box 232,
Aurora, Ind. Looking North,
#1. of 10



George St. Bridge, Aurora,
Ind.; Markwalter photo 10/83
Neg R2 Box 232 Aurora, Ind.
Approach & main trusses,
looking south. 

2 of 10



George St. Bridge, Aurora,
Ind.; Markwalter photo 10/83
neg. R2 Box 232 Aurora, Ind.
Main truss & south pier,
looking southeast ~~2-A~~

3 of 10



George St. Bridge, Aurora,
Ind. Photo Bob Markwalter/
Les Baker, May, 1983, looking
Northeast. Neg. Markwalter,
Rt 2, Box 232, Aurora, Ind.

~~#2~~. #4 of 10



George St. Bridge and portion
of Aurora business dist.,
Aurora, Ind. Photo Bob
Markwalter/Les Baker, May,
1983, looking North on Main
St. Neg. Markwalter, Rt 2,
Box 232, Aurora, Ind.

~~#3~~ #5 of 10



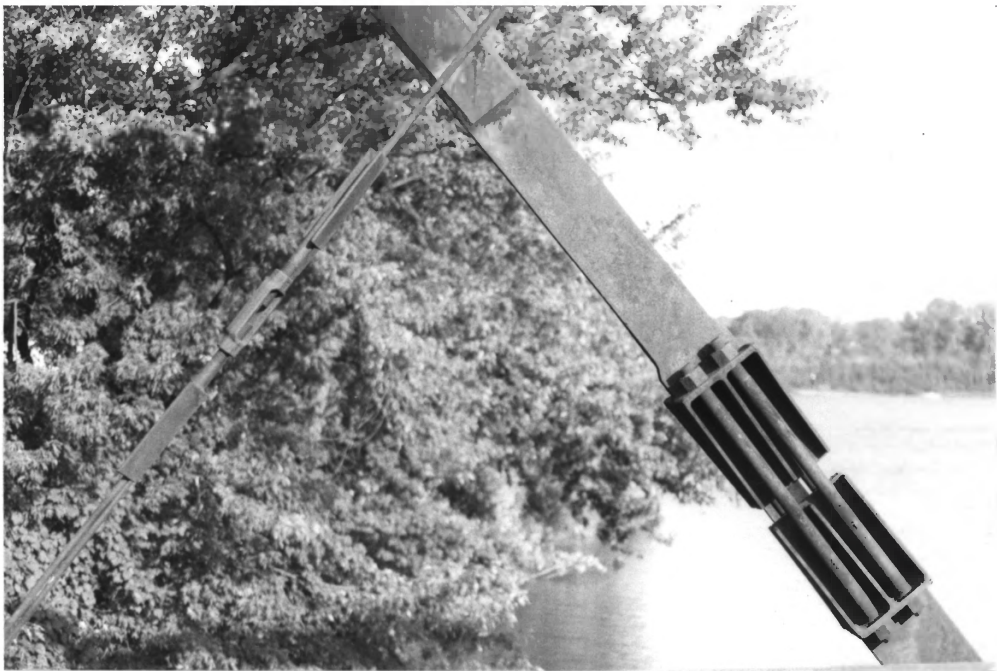
George St. Bridge, Aurora,
Ind.; Markwalter photo 10/83
Neg. R2 Box 232 Aurora, Ind.
Panel point, top chord and er
end vertical ~~6~~A

#6 of 10



George St. Bridge, Aurora,
Ind.; Markwalter photo 10/83
Neg. R2 Box 232 Aurora, Ind.
Vertical, diagonals and counte
ers, vibration dampers ~~10-A~~

7 of 10



George St. Bridge, Aurora,
Ind.; Markwalter photo 10/83
Neg. R2 Box 232 Aurora, Ind.
Diagonal and counter ~~8-1~~

8 of 10



George St. Bridge, Aurora,
Ind.; Markwalter photo 10/83
Neg. R2 Box 232 Aurora, Ind.
Bottom chord and connection
at upright ~~9~~A

9 of 10



George St. Bridge, Aurora,
Ind.; Markwalter photo 10/83
Neg. R2 Box 232 Aurora, Ind.
Panel point, top chord and
lateral, upright and diagonal

~~5~~A # 10 of 10



George St. Bridge, Aurora,
Ind.; Markwalter photo 10/83
Neg. R2 Box 232 Aurora, Ind.
Main truss from U.S. Rt 50
bridge, looking east. 4-A