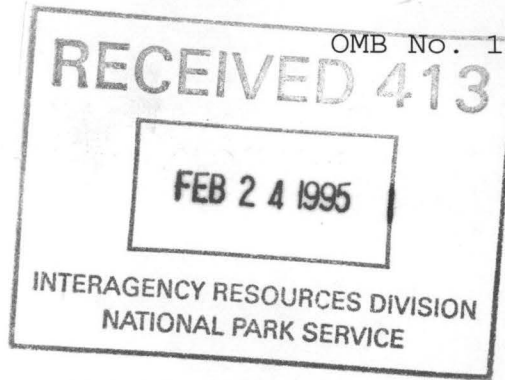


(Boundary Increase)

350

NPS Form 10-900
(Rev. 8-86)

OMB No. 1024-0018



United States Department of the Interior
National Park Service

NATIONAL REGISTER OF HISTORIC PLACES
REGISTRATION FORM

1. Name of Property

historic name: Amendment to the Washington-Willow Historic District

other name/site number: N/A

2. Location

street & number: Roughly bounded by Olive Avenue on the east, Center Street on the south, Willow Avenue on the west, and Prospect Street on the north

not for publication: N/A

city/town: Fayetteville

vicinity: N/A

state: AR county: Washington code: AR 143 zip code: 72701

3. Classification

Ownership of Property: Private

Category of Property: District

Number of Resources within Property:

Contributing	Noncontributing	
<u>42</u>	<u>39</u>	buildings
<u>2</u>	<u> </u>	sites
<u> </u>	<u> </u>	structures
<u> </u>	<u> </u>	objects
<u>44</u>	<u>39</u>	Total

Number of contributing resources previously listed in the National Register: 1

Name of related multiple property listing: N/A

=====
4. State/Federal Agency Certification
=====

As the designated authority under the National Historic Preservation Act of 1986, as amended, I hereby certify that this X nomination _____ request for determination of eligibility meets the documentation standards for registering properties in the National Register of Historic Places and meets the procedural and professional requirements set forth in 36 CFR Part 60. In my opinion, the property X meets _____ does not meet the National Register Criteria. _____ See continuation sheet.

Cathryn A. Slate _____ 2-8-95
Signature of certifying official Date

Arkansas Historic Preservation Program
State or Federal agency and bureau

In my opinion, the property _____ meets _____ does not meet the National Register criteria. _____ See continuation sheet.

Signature of commenting or other official Date

State or Federal agency and bureau

=====
5. National Park Service Certification
=====

I, hereby certify that this property is:

- entered in the National Register _____ Edson R. Beall 3-28-95
_____ See continuation sheet.
- determined eligible for the National Register _____
_____ See continuation sheet.
- determined not eligible for the National Register _____
- removed from the National Register _____
- other (explain): _____

Entered in the
National Register
Beall Signature of Keeper _____ Date
of Action

=====
6. Function or Use
=====

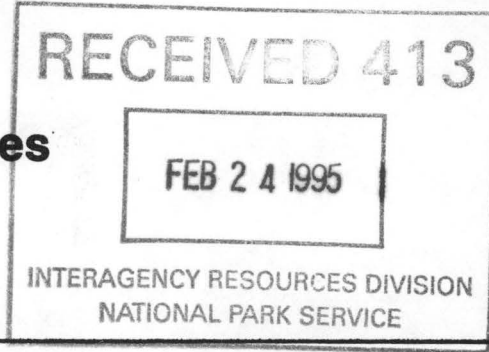
Historic: DOMESTIC Sub: Single dwelling

Current: DOMESTIC Sub: Single dwelling

**United States Department of the Interior
National Park Service**

**National Register of Historic Places
Continuation Sheet**

Section number 7 Page 1



Summary

This nomination seeks to add approximately eleven blocks of historic residential buildings to the existing Washington-Willow Historic District in Fayetteville, Arkansas (NR-Listed 05/23/80). The proposed amendment includes a total of seventy-nine (79) properties, all of which wrap around the southeastern, eastern and northeastern boundaries of the existing district. Included are a total of forty-three contributing buildings and two contributing sites (one of which includes three of the contributing buildings), and thirty-nine non-contributing buildings (two of which are located within the contributing sites, one on each). Though the amendment includes buildings designed in several of the same styles for which the original district was recognized (Greek Revival, Italianate, Queen Anne Revival/Folk Victorian, Colonial Revival, Craftsman and English Revival), it also includes an assortment of common traditional American housing types that became popular before the onset of the Second World War and which were not well understood when the original nomination was drafted. It also includes the site of the Big Spring, the natural spring around which the first documented European settlement of this community occurred in 1828. As such, this amendment expands the original period of significance from 1853-1930 to 1828-1945.

All of the thirty-nine non-contributing buildings are residential also. In spite of the fact that they comprise almost half of the total number of properties included in this amendment, the non-contributing buildings generally share the scale and site orientation of the contributing buildings.

Elaboration

The amendment to the Washington-Willow Historic District -- an almost exclusively residential historic neighborhood of Fayetteville, Arkansas, and the oldest collection of historic residential building stock in the city -- contains examples of many of the national architectural styles for which the original district was recognized as well as various traditional American building types that were not recognized in the original nomination. Furthermore, this amendment also includes one site noteworthy for its historic value -- the Big Spring -- and another site that is significant for its extant antebellum landscape features in spite of the fact that the main house has been so altered as to be non-contributing. The included contributing buildings date from 1866 to 1945 and (for the purposes of this nomination) the cultural significance of the Big Spring dates from 1828, when the first documented European settler, James McGarrah, settled near the spring and thus effectively began the community that would become Fayetteville. However, most of the contributing buildings date from after the turn of the century.

United States Department of the Interior
National Park Service

National Register of Historic Places Continuation Sheet

Section number 7 Page 2

Though the amendment includes buildings designed in several of the same styles for which the original district was recognized (Greek Revival, Italianate, Queen Anne Revival/Folk Victorian, Colonial Revival, Craftsman and English Revival), it also includes an assortment of common traditional American housing types that became popular before the onset of the Second World War and which were not well understood when the original nomination was drafted. The various architectural styles are represented as follows:

Greek Revival/Italianate

Only one property, the Wilson-Pittman-Campbell-Gregory House (WA0395; NR-Listed 05/06/80) is an 1866 Greek Revival design that was augmented with Italianate additions and detailing around 1871. It includes the main two-storey residence, six extant outbuildings, and such historic landscape features as fencing, walkways, stone walls and patios, stone-lined culverts, a stone cooking fireplace and various other smaller evidence of landscape design. As listed on the National Register the boundary includes all of the property associated with the house that retains its integrity, though the remaining land is but a fraction of what was formerly a part of the original farmstead.

Queen Anne Revival/Folk Victorian

A total of six extant buildings can be categorized as Queen Anne Revival: the Simco House (WA0639), the Reed House (WA0641), the Ramsay-Faust House (WA0685), the house at 501 N. Walnut Street (WA0696), the house at 631 Willow Street (WA0719), and the Renner House (WA0724). Two more can be more accurately included within the stylistic category of Folk Victorian: the Conner-Lesh House (WA0689) and the Johnson House (WA0706). The Queen Anne Revival residences range from such more elaborate designs as the Simco House and the House at 501 N. Walnut, both of which exhibit the typical asymmetrical floor plans and elevations, substantial front porches and projecting architectural elements (beveled bays, oriel windows, substantial dormers) to the Reed, Ramsay-Faust, 631 Willow and Renner Houses, which employ more restrained detailing, though they reflect such fundamental characteristics as the asymmetrical floor plan, picturesque massing and substantial porches (it should be noted that the Renner House was moved to this site in 1957 and that the front porch was substantially changed at that time; however, it was moved from its original lot nearby on College Avenue where it was threatened by commercial development and its current site is roughly comparable to the original).

The two Folk Victorian houses, the Conner-Lesh House (WA0689) and the Johnson House

United States Department of the Interior
National Park Service

National Register of Historic Places Continuation Sheet

Section number 7 Page 3

(WA0706) are both no taller than one-and-one-half storeys, reflect asymmetrical floor plans and elevations, and feature such details as ornamental wooden porch supports and large window openings; the Johnson House design is also decorated with an assortment of sawn, stick and dentil detailing, and the pediment of its northern gable end displays a central wooden horseshoe that frames the attic vent and is set into a field of patterned imbricated shingles. Both are relatively intact.

Colonial Revival

Four of the residences within this amendment can be considered of the Colonial Revival style: the Guisinger House (WA0640), the Harlan House (WA0644), the house at 423 E. Lafayette (WA0656), and the house at 400 E. Maple (WA0697). All are of the gambrel roof/full front dormer type except for the 423 E. Lafayette House, which is covered by a gable roof punctuated by two symmetrically-placed, pedimented doghouse dormers. They range in stylistic complexity from the symmetrical simplicity of the Harlan and 400 E. Maple Houses to the Classically-inspired columns and pedimented entrance porticos of the Guisinger and 423 E. Lafayette houses. All are of wood frame construction and only the Guisinger House is veneered with brick; the other three are sheathed in wood weatherboard.

Craftsman

Sixteen residences reflect the influence of the Craftsman style. They are the house at 408 Lafayette Street (WA0642), the house at 426 Lafayette Street (WA0647), the house at 425 Lafayette Street (WA0655), the Howell House (WA0657), the house at 407 Lafayette Street (WA0659), the house at 403 Lafayette Street (WA0660), the house at 314 Sutton Street (WA0665), the house at 345 Walnut Avenue (WA0667), the McIlroy House (WA0673), the Bothmeyer-Fraser House (WA0683), the house at 327 Maple Street (WA0695), the Stewart House (WA0704), the house at 312 E. Maple Street (WA0707), the house at 206 E. Davidson Street (WA0710), the Ramay House (WA0714), and the house at 621 Willow Avenue (WA0721). Fourteen can be fairly categorized under the Bungalow sub-type, as they are generally one- to one-and-one-half storeys in height, augmented with substantial front porches upon which the bulk of the characteristic detail is concentrated, and protected by a low roofline with overhanging eaves. The 425 Lafayette Street house, the 407 Lafayette Street house and the 206 E. Davidson Street House are particularly good examples, with their employment of such characteristic stylistic elements as mixed media, low pyramidal porch posts, asymmetrical elevations and chimney placement, and multi-pane windows. The Bothmeyer-Fraser House and the 327 E. Maple Street house are considerably larger, each being at least a full two storeys in

United States Department of the Interior
National Park Service

National Register of Historic Places Continuation Sheet

Section number 7 Page 4

height. The former, though remodeled c. 1940 into apartments, retains such features as the knee braces, the exposed rafters, and the large, multi-pane windows. The latter exhibits some of the more typical elements noted above in addition to such more unusual features as the recessed central roof balcony.

English Revival

Only four residences were designed with any discernable English Revival inspiration: the house at 312 Lafayette Street (WA0638), the house at 308 Sutton Street (WA0663), the house at 346 Walnut Avenue (WA0668), and the house at 429 Walnut Avenue (WA0694). These designs include most of the typical stylistic elements of this style: ogee arch window and door openings, asymmetrical roofline, mixed media, picturesque elevations and asymmetrical chimney placement. The house at 308 Sutton Street is a particularly high-style example in that it employs the design element most commonly-associated with the English Revival, the application of stucco and wood trim in the front gable. It also features the ogee arches, the asymmetrical exterior chimney, and the irregularity of floor plan and elevation.

Traditional American Housing Styles

A total of seven residences within the proposed amendment can be fairly categorized as examples of traditional American housing styles (broadly known as Plain Traditional). They are the house at 307 Sutton Street (WA0669), the Campbell House (WA0684), the house at 415 Spring Street (WA0690), the Yoe House I (WA0708), the Yoe House II (WA0709), the house at 622 N. Willow Street (WA0715), and the Lewis House (WA0726). Several are single storey, side gable cottages, two are of the Foursquare type, and one is of an irregular, intersecting gable plan. Only the Lewis House is taller than one-and-one-half storeys.

Contributing Sites

The first contributing site, the Sanders-Crouch-Dailey property (WA0691), consists of one non-contributing building, three contributing outbuildings, and one contributing site. The contributing outbuildings, though historic and belonging to the period of significance, are much more recent than the surrounding landscape, which retains designed landscape features from the antebellum period, when the first documented settlement of this lot occurred (the main house actually contains the original antebellum house; however, it has since been so drastically altered that it must be considered non-contributing). The significant landscape features include a stone lined spring outflow structure, a spring pond, and a long stone-lined culvert that provides drainage for

**United States Department of the Interior
National Park Service**

**National Register of Historic Places
Continuation Sheet**

Section number 7 Page 5

the spring outflow. The other site (WA0687) includes the Big Spring, the natural water source around which the earliest documented settlement occurred in 1828. In the more recent historic period the spring has been augmented with stone landscaping that is now considered part of the site's significance. A c. 1950 residence on part of the site is non-contributing.

Non-Contributing Resources

All of the thirty-nine non-contributing resources are buildings, though all are residences and of the same scale and site relationship as the contributing buildings. The majority of the non-contributing buildings are historic residences that have been insensitively modified over time, while the remainder are non-historic.

**United States Department of the Interior
National Park Service**

**National Register of Historic Places
Continuation Sheet**

Section number 8 Page 1

Summary

Criteria A and C, local significance

Like the original Washington-Willow Historic District, which was considered significant for both its historic associations and the quality of its late nineteenth and early twentieth century architecture, the proposed amendment gains its importance by virtue of both historic and architectural significance (though primarily from the latter). The proposed amendment contains several noteworthy examples of the same styles for which the original district was recognized, plus other historic American housing types that were not as well understood at the time that the original nomination was prepared. The amendment also includes two historic sites, one noteworthy for its extant design features and the other for its considerable historic significance for the settlement and growth of this section of the city.

The existence of this shared historic and historic architectural legacy encouraged the City of Fayetteville to initiate a re-survey of this area to the east of the original district in 1993 and its completion resulted in the identification of this relatively intact ensemble of historically-significant residential construction directly adjacent to the original district.

Elaboration

As noted in the original nomination, the McGarrah family was among the first documented families to settle in this neighborhood, the site of the earliest settlement (1828) by people of European ancestry in what would become the city of Fayetteville. Probably the principal attraction for arriving settlers was the Big Spring, the natural fresh water spring that rises to the surface here from its underground source. This spring continued to provide water for local residents through the Civil War period and thus continued to serve as an inducement to nearby settlement.

Only a few intact antebellum houses survive in this neighborhood, but one site -- the Sanders-Crouch-Dailey property -- retains important antebellum landscape features, even if the main residence has been so altered as to be non-contributing to the district's historic significance. The survival of the stone walls and stone-lined culvert bespeak the quality of their random-laid fieldstone masonry construction.

After the Civil War the old McGarrah farm was purchased by the Fayetteville Masonic Order and subdivided into smaller house lots that were then sold (all of which became known as the Masonic Addition to the original city of Fayetteville). This resulted in the steady expansion of

**United States Department of the Interior
National Park Service**

**National Register of Historic Places
Continuation Sheet**

Section number 8 Page 2

residential housing stock that occurred up until and through the turn of the century, as noted in the original nomination. The construction boom continued through the 1920's and 1930's, up until World War II, and resumed thereafter; in fact, this neighborhood continues to experience some new construction today.

The original nomination noted the quality of the historic architecture within this neighborhood. However, given that the survey which supported that nomination was conducted in the late 1970's, it is understandable that the construction dating from 1930 to 1945 would be excluded. Several of the styles that achieved peak popularity during that period -- the Craftsman and English Revival in particular -- are well-represented within the proposed amendment. The as-built designs within both idioms range from the simple to the elaborate, from the vernacular to the high-style. Other more traditional historic American housing types are also found, such as the American Foursquare, and thus also contribute.

The amendment to the Washington-Willow Historic District is eligible under Criteria A and C. It is eligible under Criterion A by virtue of its direct and intact relationship to the Big Spring site, the famous spring of which attracted European settlers (and probably Native Americans before them) to this area in the first place and which continues to flow today. The amendment is eligible under Criterion C by virtue of its extant ensemble of late nineteenth and early twentieth century housing stock that reflects the influence of most of the major contemporary national styles for such construction.

=====
9. Major Bibliographical References
=====

X See continuation sheet.

Previous documentation on file (NPS):

- preliminary determination of individual listing (36 CFR 67) has been requested.
- previously listed in the National Register
- previously determined eligible by the National Register
- designated a National Historic Landmark
- recorded by Historic American Buildings Survey # _____
- recorded by Historic American Engineering Record # _____

Primary Location of Additional Data:

- X State historic preservation office
- Other state agency
- Federal agency
- Local government
- University
- Other -- Specify Repository: _____

=====
10. Geographical Data
=====

Acreage of Property: Approx. 104

UTM References:	Zone	Easting	Northing	Zone	Easting	Northing	
A	<u>15</u>	<u>395940</u>	<u>3992580</u>	B	<u>15</u>	<u>396350</u>	<u>3992560</u>
C	<u>15</u>	<u>396300</u>	<u>3991440</u>	D	<u>15</u>	<u>395900</u>	<u>3991450</u>

 See continuation sheet.

Verbal Boundary Description: See continuation sheet.

This amendment consists of two separate residential areas both of which abut the boundary of the existing Washington-Willow Historic District. The first is defined as follows: Beginning at the northeastern corner of Trent Avenue's dead end (along the southernmost boundary of the existing Washington-Willow Historic District) proceed southerly along the eastern edge of said avenue to its intersection with the northern edge of Spring Street; thence proceed easterly along said edge to its intersection with a perpendicular line running along the eastern edge of Willow Avenue; thence proceed southerly along said line to its intersection with a perpendicular line running along the southern lot lines of lots 5 and 6 of the Terrace Lawn Subdivision; thence proceed easterly along said lines, then jog south to follow the southern lot lines of lots 1-4 of the same subdivision until intersecting the eastern edge of Walnut Avenue; thence proceed southerly along said line to the intersection with the southern lot line of lot 2, Block 1 of Harrison's Addition; thence proceed easterly along said line to the intersection with a perpendicular line running along the western edge of Olive Avenue; thence proceed northerly along said line to its intersection with a perpendicular line running along the southern edge of Lafayette Street; thence proceed westerly along said line to its intersection with a perpendicular line running along the western edge of Walnut Avenue; thence proceed northerly along said line to its intersection with a perpendicular line running along

**United States Department of the Interior
National Park Service**

National Register of Historic Places Continuation Sheet

Section number 9 Page 1

Bibliography

Brown, Kent R., *Fayetteville: A Pictorial History*, (Norfolk: Donning Company).

Campbell, William S., *One Hundred Years of Fayetteville, 1828-1928*, (Washington County Historical Society, Fayetteville, Arkansas: 1977).

the northern edge of Maple Street; thence proceed easterly along said line to its intersection with a perpendicular line running along the eastern boundary line of the eastern 60 feet of lots 5 and 6 of the Gunter Addition; thence proceed westerly along the northern lot line of said lot 5 to its intersection with the western edge of Walnut Avenue; thence jog northerly to the northern lot line of lot 27, Davidson's Addition; thence proceed westerly approx. 270 feet to the intersection with a perpendicular line running along the western property line of WA0707 (the eastern boundary of the existing Washington-Willow Historic District); thence proceed southerly along said line (as noted on accompanying sketch map) to the point of beginning.

The second section of the amendment is bounded as follows: Beginning at the northeastern corner of the existing district (the northeastern corner of lot 6, Block E, Maplewood Addition), proceed northerly along the eastern lot lines of lots 1-6, Block E of said addition to the intersection with the southern edge of Rebecca Street; thence proceed westerly along said line to the intersection with the eastern lot lines of lots 12-14, Block D, Maplewood Addition to the northern boundary of lot 12; thence proceed westerly along said boundary to the intersection with the eastern boundary of lot 10, same block; thence proceed northerly along said line to the intersection with a perpendicular line running along the southern edge of Prospect Street; thence proceed westerly along said line to the intersection with the eastern edge of Willow Avenue; thence proceed southerly along said line to the intersection with the northern lot line of lot 10, Block C, Maplewood Addition; thence proceed westerly, then southwesterly (along the southeastern edge of the abutting alley) to the northern boundary of lot 17; thence proceed westerly, thence southerly, thence easterly around lot 17; thence proceed southeasterly along the northeast edge of the alley abutting the edge of lots 13 and 14, Block C to its intersection with the southern edge of Rebecca Street; thence proceed westerly along said line to for a distance of approximately 290 feet to its intersection with the western property line of property WA0722; thence proceed southerly 520 feet, thence easterly 160 feet, thence southerly 130 feet, thence easterly 140 feet, thence northerly 240 feet, thence westerly 100 feet, thence northerly 100 feet, thence easterly 450 feet to the point of beginning (all of the latter measurements following the abutting boundary of the existing Washington-Willow Historic District as noted on the accompanying sketch map).

Boundary Justification: ___ See continuation sheet.

This boundary includes all the property historically-associated with the associated resources that retains its integrity.

=====
11. Form Prepared By
=====

Name/Title: Kenneth Story, Architectural Historian
Organization: Arkansas Historic Preservation Program Date: 02/08/95
Street & Number: 323 Center Street, Suite 1500 Telephone: (501) 324-9880
City or Town: Little Rock State: AR Zip: 72201

UNITED STATES DEPARTMENT OF THE INTERIOR
NATIONAL PARK SERVICE

NATIONAL REGISTER OF HISTORIC PLACES
EVALUATION/RETURN SHEET

REQUESTED ACTION: BOUNDARY INCREASE

PROPERTY NAME: Washington--Willow Historic District (Boundary Increase)

MULTIPLE NAME:

STATE & COUNTY: ARKANSAS, Washington

DATE RECEIVED: 2/24/95 DATE OF PENDING LIST: 3/7/95
DATE OF 16TH DAY: 3/23/95 DATE OF 45TH DAY: 4/10/95
DATE OF WEEKLY LIST:

REFERENCE NUMBER: 95000350

NOMINATOR: STATE

REASONS FOR REVIEW:

APPEAL: N DATA PROBLEM: N LANDSCAPE: N LESS THAN 50 YEARS: N
OTHER: N PDIL: N PERIOD: N PROGRAM UNAPPROVED: N
REQUEST: N SAMPLE: N SLR DRAFT: N NATIONAL: N

COMMENT WAIVER: N

ACCEPT RETURN REJECT 3.28.95 DATE

Entered in the
National Register

ABSTRACT/SUMMARY COMMENTS:

RECOM./CRITERIA _____

REVIEWER _____ DISCIPLINE _____

TELEPHONE _____ DATE _____

DOCUMENTATION see attached comments Y/N see attached SLR Y/N



AMENDMENT TO WASH. - WILLOW H. D.

FAYETTEVILLE, WASHINGTON Co., AR

PHOTO BY J. WHEELER

12/92

NEG. ON FILE AT AHPP

VIEW OF BLOCK ON (N) SIDE OF LAFAYETTE ST.
(STREETSCAPE)



AMENDMENT TO WASH. - WILKOW H. D.
FAYETTEVILLE, WASHINGTON Co., AR

PHOTO BY J. WHEELER

12/92

NEG. ON FILE AT AHPP

VIEW LOOKING WEST ON LAFAYETTE (STREETSCAPE)



SINCO HOUSE

AMENDMENT TO WASH.-WILLOW H.D.

FAYETTEVILLE, WASHINGTON Co., ARKANSAS

PHOTO. BY J. WHEELER

12/92

NEG. ON FILE AT AHPP

VIEW FROM SW

WA 0639



RAMSAY-FAUST HOUSE

AMENDMENT TO WASH. - WILLOW H. D.
FAYETTEVILLE, WASHINGTON Co, ARKANSAS

PHOTO. BY V. WHEELER

12/92

NEG. ON FILE AT AHPP

VIEW FROM SOUTH

WAD 685



JOHNSON HOUSE

AMENDMENT TO WASH. - WILLOW H. D.

FAYETTEVILLE, WASHINGTON Co., ARKANSAS

PHOTO. BY V. WHEELER

12/92

NEG. ON FILE AT AHPP

VIEW FROM NORTH

WA0706



GUISINGER HOUSE

AMENDMENT TO WASH. - WILKOW H. D.

FAYETTEVILLE, WASHINGTON Co., ARKANSAS

PHOTO BY J. WHEELER

12/92

NEG. ON FILE AT AHPP

VIEW FROM SW

W40640



HARLAN HOUSE

AMENDMENT TO WASH.-WILLOW H. D.

FAYETTEVILLE, WASHINGTON Co., ARKANSAS

PHOTO BY V. WHEELER

12/92

NEG. ON FILE AT AHPP

VIEW FROM SW

WA 0644



HOUSE AT 423 E. LAFAYETTE

AMENDMENT TO WASH-WILLOW H. D.

FAYETTEVILLE, WASHINGTON Co., ARKANSAS

PHOTO. BY J. WHEELER

12/92

NEG. ON FILE AT ANPP

VIEW FROM NORTH

WA0656



HOUSE AT 423 E. LAFAYETTE

AMENDMENT TO WASH. - WILLOW H. D.

FAYETTEVILLE, WASHINGTON Co., ARKANSAS

PHOTO. BY V. WHEELER

12/92

NEG. ON FILE AT AHPP

VIEW FROM NW

WA0656



407

HOUSE AT 407 LAFAYETTE ST.

AMENDMENT TO WASH.-WILLOW H. D.
FAYETTEVILLE, WASHINGTON Co., AR

PHOTO BY J. WHEELER

12/92

NEG ON FILE AT ANPP

VIEW FROM NORTH

WA0659



HOUSE AT 407 LAFAYETTE ST.

AMENDMENT TO WASH. - WILLOW H. D.
FAYETTEVILLE, WASHINGTON Co, AR

PHOTO BY J. WHEELER

12/92

NEG. ON FILE AT AHPP

VIEW FROM SE

WA0659



HOUSE AT 327 E. MAPLE

AMENDMENT TO WASH. - WILLOW H. D.

FAYETTEVILLE, WASHINGTON Co., AR

PHOTO BY J. WHEELER

12/92

NEG. ON FILE AT AHPP

VIEW FROM NORTH

WA0695



HOUSE AT 206 E. DAVIDSON ST.
AMENDMENT TO WASH.-WILLOW H. D.
FAYETTEVILLE, WASHINGTON Co, AR

PHOTO BY V. WALLACE

12/92

NEG. ON FILE AT ANPP

VIEW FROM NORTH

WAO 710



HOUSE AT 312 LAFAYETTE ST.

AMENDMENT TO WASH.-WILLOW H.D.

FAYETTEVILLE, WASHINGTON Co., ARKANSAS

PHOTO BY J. WHEELER

12/92

NEG. ON FILE AT AHPP

VIEW FROM SOUTH

WA0638



HOUSE AT 308 SUTTON ST.

AMENDMENT TO WASH.-WILKOW H. D.

FAYETTEVILLE, WASHINGTON CO., ARK

PHOTO BY V. WHEELER

12/92

NEG. ON FILE AT AHPP

VIEW FROM SOUTH

WA 0663



HOUSE AT 308 SUTTON ST.
AMENDMENT TO WASH. - WILLOW H. D.
FAYETTEVILLE, WASHINGTON Co., AR

PHOTO BY V. WHEELER

12/92

NEG. ON FILE AT AHPP

VIEW FROM SE

WA0663



CAMPBELL HOUSE

AMENDMENT TO WASH. - WILKOW H. D.
FAYETTEVILLE, WASHINGTON Co., AR

PHOTO BY J. WHEELER

12/92

NEG. ON FILE AT AHPP

VIEW FROM NORTH

WAO 684



HOUSE AT 415 SPRING ST.

AMENDMENT TO WASH. - WILLOW H. D.

FAYETTEVILLE, WASHINGTON CO., AR

PHOTO BY J. WHEELER

12/92

NEG. ON FILE AT AHPP

VIEW FROM EAST

WA0690



YOE HOUSE I

AMENDMENT TO WASH. - WILLOW H.D.

FAYETTEVILLE, WASHINGTON Co., ARKANSAS

PHOTO BY J. WHEELER

12/92

NEG. ON FILE AT AHPP

VIEW FROM SOUTH

WAO708



SANDERS-CROUCH-DAILEY HOUSE + GROUNDS

AMENDMENT TO WASH. - WILLOW H. D.

FAYETTEVILLE, WASHINGTON Co., AR

PHOTO BY J. WHEELER

12/92

NEG. ON FILE AT AHPP

VIEW FROM SW

WA0691



PANDERS-CROUCH-DAILEY HOUSE & GROUNDS

AMENDMENT TO WASH.-WILLOW H. D.

FAYETTEVILLE, WASHINGTON Co., AR

PHOTO BY J. WHEELER

12/92

NEG. ON FILE AT AHPP

STONE CULVERT DETAIL

WAO 691



SANDERS-CROUCH-DAILEY HOUSE + GROUNDS

AMENDMENT TO WASH-WILLOW H. D.

FAYETTEVILLE, WASHINGTON Co., AR

PHOTO BY J. WHEELER

12/92

NEG. ON FILE AT AHPP

STONE SPRING POND DETAIL

WA0691



JANDERS-CROUCH-DAILEY HOUSE + GROUNDS

AMENDMENT TO WASH. - WILLOW H. D.

FAYETTEVILLE, WASHINGTON Co., AR

PHOTO BY J. WHEELER

12/92

NEG. ON FILE AT ANPP

SPRINGHOUSE DETAIL

WA0691



PANDERS-CROUCH-DAILEY HOUSE & GROUNDS
AMENDMENT TO WASH.-WILLOW H. D.

FAYETTEVILLE, WASHINGTON Co., AR

PHOTO BY J. WHEELER

12/92

NEG. ON FILE AT AHPP

VIEW OF CHICKEN SHED FROM NW

WA0691



BIG SPRING ~~PROPERTY~~ SITE

AMENDMENT TO WASH. - WILLOW H. D.

FAYETTEVILLE, WASHINGTON Co, AR

PHOTO BY J. WHEELER

12/92

NEG. ON FILE AT AHPP

VIEW OF NON-CONTRIB. HOUSE FROM EAST.

WAO 687



BIG SPRING SITE

AMENDMENT TO WASH. - WILLOW H. D.
FAYETTEVILLE, WASHINGTON Co., AR

PHOTO BY J. WHEELER

12/92

NEG. ON FILE AT AHPP

VIEW FROM WEST OF SPRING

WA0687



DONALDSON HOUSE (NC)

AMENDMENT TO WASH. - WILLOW H. D.

FAYETTEVILLE, WASHINGTON Co., AR

PHOTO BY J. WHEELER

12/92

NEG. ON FILE AT AHPP

VIEW FROM SOUTH

WAO 716



HOUSE AT 313 OLIVE AVE. (NC)

AMENDMENT TO WASH. - WINDOW H. D.

FAYETTEVILLE, WASHINGTON Co., AR

PHOTO BY J. WHEELER

12/92

NEG. ON FILE AT AHPP

VIEW FROM SOUTH

WA 0680



ST. JOSEPH'S CATHOLIC CHURCH (NC)

AMENDMENT TO WASH. - WILLOW H. D.

FAYETTEVILLE, WASHINGTON Co., AR

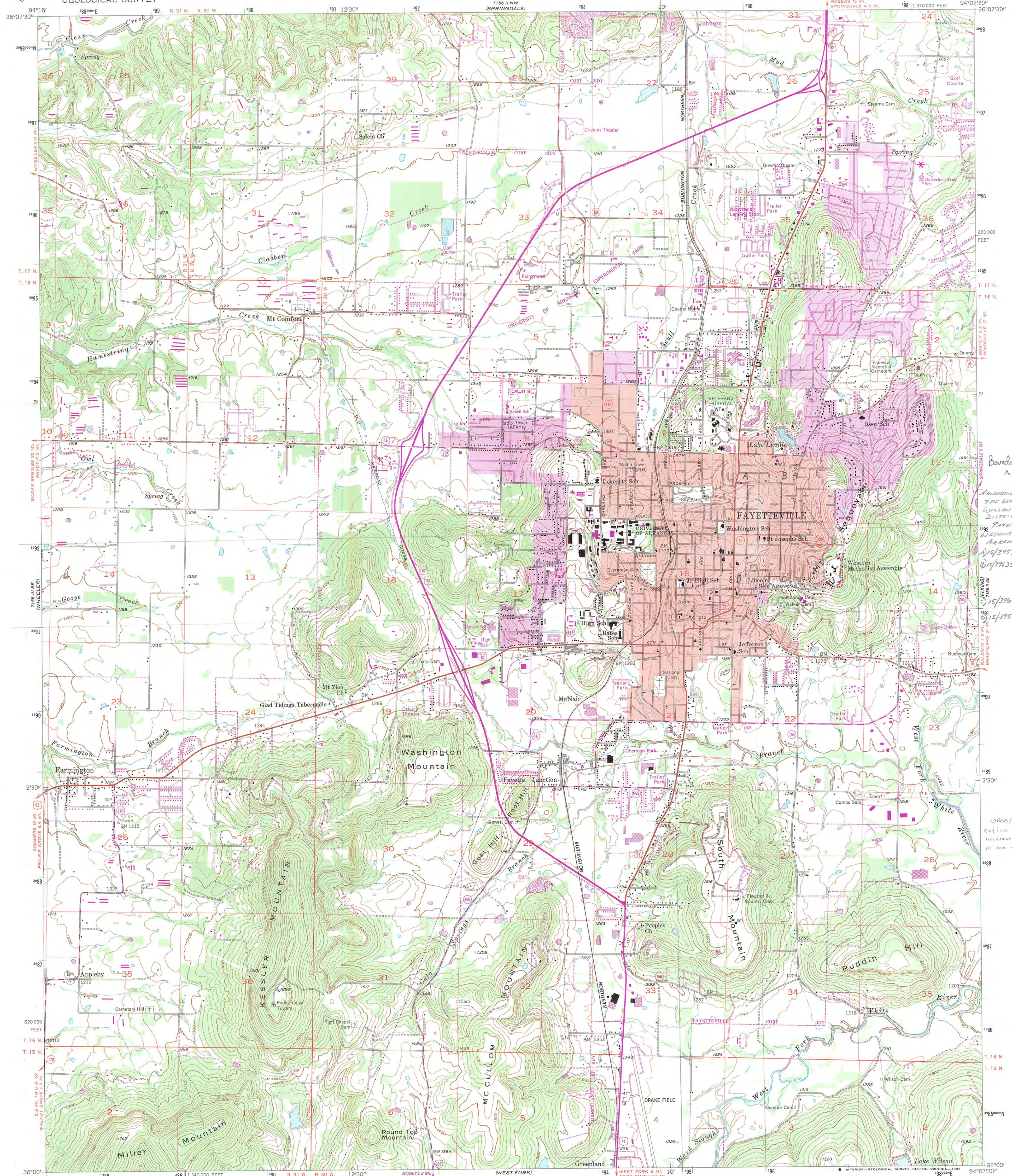
PHOTO BY J. WHEELER

12/92

NEG. ON FILE AT SHPP

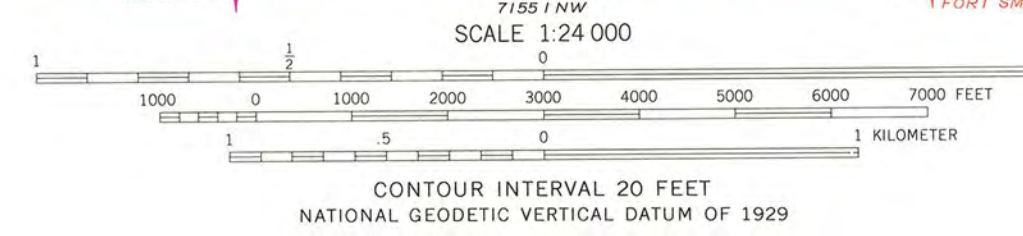
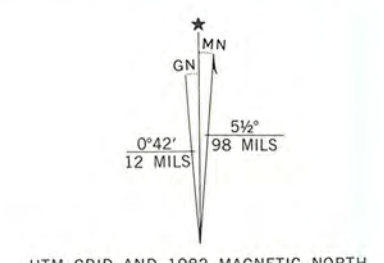
VIEW FROM NW

WAD661



Boundary Increase Area
Amendment to the Washington-Willow Historic District
FAYETTEVILLE, WASHINGTON CO., ARKANSAS
A) 15/395740/392570
B) 15/396350/392560
C) 15/396300/399140
D) 15/395900/3991450
DEGS/OTM
Deliver Boundary Increase Areas only in one enclosed polygon

Mapped, edited, and published by the Geological Survey
Control by USGS and USC&GS
Topography from aerial photographs by Kelsh plotter
Aerial photographs taken 1957. Field check 1958
Polyconic projection. 1927 North American datum
10,000-foot grid based on Arkansas coordinate system, north zone
1000-meter Universal Transverse Mercator grid ticks, zone 15, shown in blue
Red tint indicates area in which only landmark buildings are shown
To place on the predicted North American Datum 1983 move the projection lines 5 meters south and 17 meters east as shown by dashed corner ticks
Revisions shown in purple compiled from aerial photographs taken 1980 and other sources. This information not field checked. Map edited 1982
Purple tint indicates extension of urban area



ROAD CLASSIFICATION

Primary highway, hard surface	Light-duty road, hard or improved surface
Secondary highway, hard surface	Unimproved road
Interstate Route	U. S. Route
	State Route

THIS MAP COMPLIES WITH NATIONAL MAP ACCURACY STANDARDS FOR SALE BY U. S. GEOLOGICAL SURVEY, DENVER, COLORADO 80225, OR RESTON, VIRGINIA 22092 AND ARKANSAS GEOLOGICAL COMMISSION, LITTLE ROCK, ARKANSAS 72204
A FOLDER DESCRIBING TOPOGRAPHIC MAPS AND SYMBOLS IS AVAILABLE ON REQUEST

FAYETTEVILLE, ARK.
N 3600—W 9407.5/7.5
1958
PHOTOREVISED 1982
DMA 7156 II SW—SERIES V884

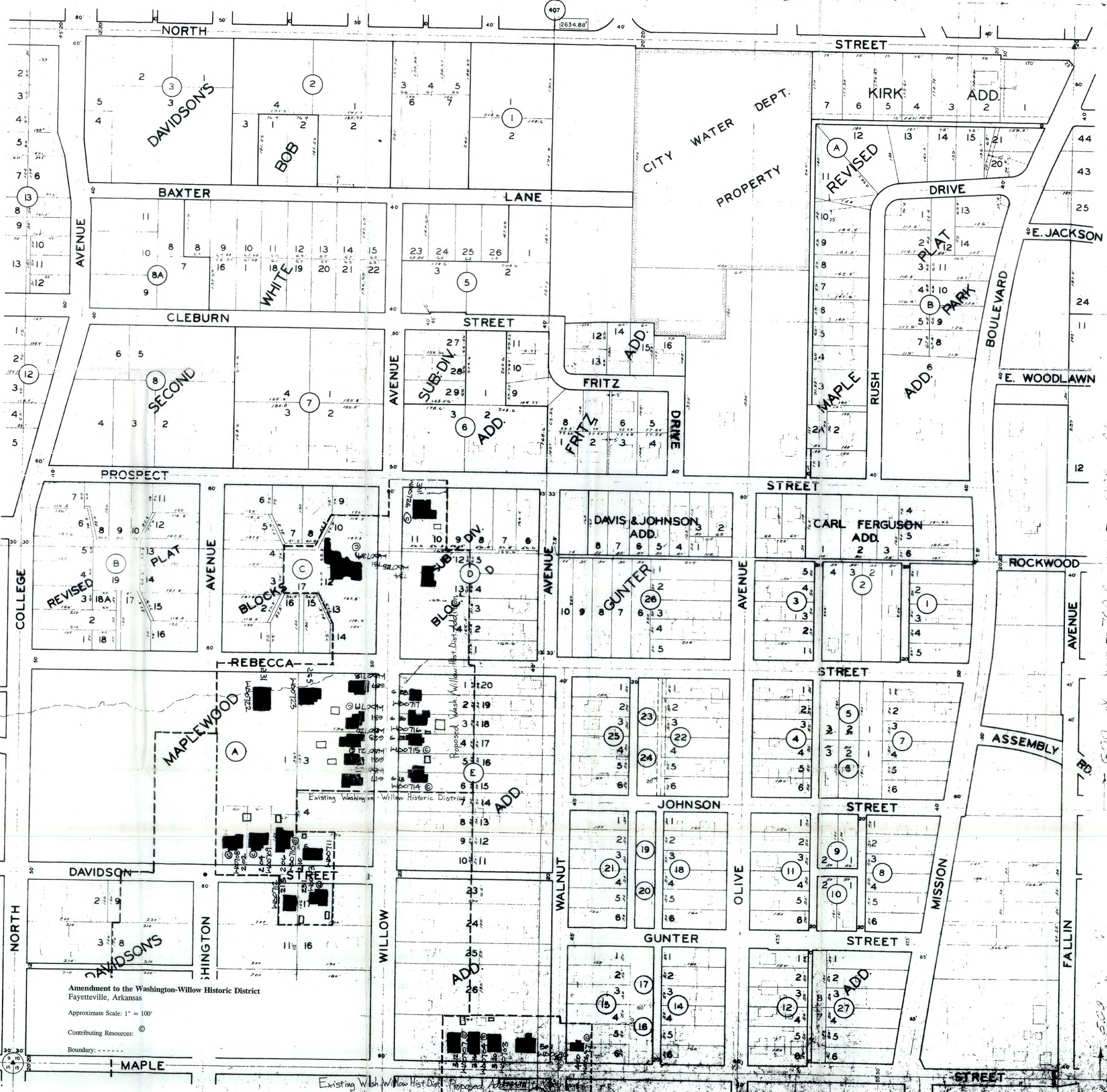
DATE AUGUST 21, 1956
 REVISION:
 SEPTEMBER 4, 1956
 FEBRUARY 19, 1957
 MAY 9, 1957
 FEBRUARY 5, 1963
 JULY 20, 1965
 DECEMBER 14, 1976
 JAN 19, 1977
 JUNE 20, 1983 SAFETY R/W
 OCT 3, 1983 CITY PROPERTY
 OCT 29, 1984 VACATE VESTER
 AV UTILITY ESMT ORD 3012
 JUL 1, 1985 UTILITY SOUTH
 SEPT 14, 1985 8:55:3 AGEN.
 JUL 7, '86 CORRECTION 1ST
 SOUTH UTILITY ESMT
 1. 2. 7. 8. ORD NO. 3056
 4. 9. 40. Library Prop.
 14. 16. 18. CITY ORD. 3501 A.Y. V.C.
 2. 9-87. C-027. 2R



Amendment to the Washington-Willow Historic District
 Fayetteville, Arkansas
 Approximate Scale: 1" = 100'
 Contributing Resources: ©
 Boundary: - - - - -

485

DATE AUGUST 1, 1956
 REVISED:
 AUGUST 2, 1956
 FEBRUARY 19, 1957
 APRIL 6, 1957
 DECEMBER 12, 1962
 JULY 25, 1965
 NOV. 25, 1975
 DECEMBER 13, 1976
 JUNE 27, 1978
 MARCH 24, 1981
 SEP. 16, 1981
 SEP. 27, 90 CTY. ORD. 3500

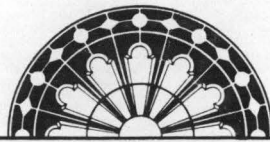


North

Amendment to the Washington-Willow Historic District
 Fayetteville, Arkansas
 Approximate Scale: 1" = 100'
 Contributing Resources: ©
 Boundary: - - - -

446

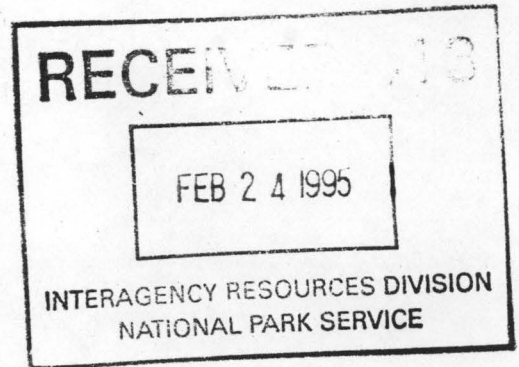
128



ARKANSAS
HISTORIC
PRESERVATION
PROGRAM

February 8, 1995

Carol D. Shull
Chief of Registration
United State Department of the Interior
National Register of Historic Places
National Park Service
800 North Capitol Street, Suite 250
Washington, D.C. 20002



RE: ✓ Amendment to the Washington-Willow Historic District
Fayetteville, Washington County

Saenger Theater
Pine Bluff, Jefferson County

Marion Colored High School
Sunset, Crittenden County

Dear Carol:

We are enclosing for your review the nomination of the above referenced properties. The Arkansas Historic Preservation Program has complied with all applicable nominating procedures and notification requirements in the nomination process.

Thank you for your consideration in this matter.

Sincerely,

Cathy Buford Slater
State Historic Preservation Officer

CBS:br

Enclosures

