

United States Department of the Interior
National Park Service

National Register of Historic Places
Registration Form

1559

NOV 24 2000

NAT. REGISTER OF HISTORIC PLACES

This form is for use in nominating or requesting determinations for individual properties and districts. See instructions in *How to Complete the National Register of Historic Places Registration Form* (National Register Bulletin 16A). Complete each item by marking "x" in the appropriate box or by entering the information requested. If an item does not apply to the property being documented, enter "N/A" for "not applicable." For functions, architectural classification, materials, and areas of significance, enter only categories and subcategories from the instructions. Place additional entries and narrative items on continuation sheets (NPS Form 10-900a). Use a typewriter, word processor, or computer, to complete all items.

1. Name of Property

historic name Marianna Commercial Historic District

other names/site number Downtown Marianna

2. Location

street & number Portions of Chestnut, Liberty, East Columbia, Mississippi, Poplar, Main, Court, and Church Streets

☐ not for publication

city or town Marianna

☐ vicinity

state Arkansas code AR county Lee code 039 zip code 72360

077

3. State/Federal Agency Certification

As the designated authority under the National Historic Preservation Act, as amended, I hereby certify that this ☒ nomination ☐ request for determination of eligibility meets the documentation standards for registering properties in the National Register of Historic Places and meets the procedural and professional requirements set for in 36 CFR Part 60. In my opinion, the property ☒ meets ☐ does not meet the National Register criteria. I recommend that this property be considered significant ☐ nationally ☐ statewide ☒ locally. (See continuation sheet for additional comments.)

Cashie Matthews
Signature of certifying official/Title

11/8/00
Date

Arkansas Historic Preservation Program
State or Federal agency and bureau

In my opinion, the property ☐ meets ☐ does not meet the National Register criteria. (☐ See Continuation sheet for additional comments.)

Signature of certifying official/Title

Date

State or Federal agency and bureau

4. National Park Service Certification

I hereby certify that the property is:

☒ entered in the National Register.
☒ See continuation sheet

☐ determined eligible for the
National Register.
☐ See continuation sheet

☐ determined not eligible for the
National Register.

☐ removed from the National
Register.

☐ other, (explain:) _____

(for) Signature of the Keeper

David D. Pope

Date of Action

11/04/01

5. Classification**Ownership of Property**
(Check as many boxes as apply)

- ☒ private
☒ public-local
☐ public-State
☒ public-Federal

Category of Property
(Check only one box)

- ☐ building(s)
☒ district
☐ site
☐ structure
☐ object

Number of Resources within Property
(Do not include previously listed resources in count.)

Contributing	Noncontributing	
45	21	buildings
1	0	sites
0	1	structures
0	0	objects
46	22	Total

Name of related multiple property listing

(Enter "N/A" if property is not part of a multiple property listing.)

Something So Dim It Must Be Holy:
 Civil War Commemorative Sculpture in Arkansas, 1886-1934

Number of Contributing resources previously listed in the National Register

2 – Robert E. Lee Monument & Lee County Courthouse

6. Function or Use**Historic Functions**

(Enter categories from instructions)

Commerce/Trade – Business, Professional, Financial

Institution, Specialty Store, Department Store

Government – Post Office, County Courthouse**Social** – Meeting Hall**Religion** – Religious Facility, Church**Recreation/Culture** – Monument/Marker**Health Care** – Medical Business**Landscape** – Plaza**Current Functions**

(Enter categories from instructions)

Commerce/Trade – Professional, Financial Institution,

Specialty Store

Domestic – Apartment Building**Government** – Post Office, County Courthouse, Correctional

Facility, Fire Station, Government Office

Religion – Religious Facility, Church**Recreation/Culture** – Monument/marker**Landscape** – Plaza, Park**Vacant/Not in Use****7. Description****Architectural Classification**

(Enter categories from instructions)

Other: 19th Century CommercialOther: 20th Century CommercialMid 19th Century: Gothic Revival

Late Victorian: Italianate

Late 19th & 20th Century Revivals: Classical/Neoclassical

Modern Movement: Art Deco

Materials

(Enter categories from instructions)

foundation Brick, Concrete

walls Brick, Stucco, Limestone, Concrete,

Vinyl Siding

roof Built-up Tar, Asphalt, Tin

other Marble (statuary), Wood

Narrative Description

(Describe the historic and current condition of the property on one or more continuation sheets.)

SEE CONTINUATION SHEET.

United States Department of the Interior
National Park Service

National Register of Historic Places Continuation Sheet

Section number 7 Page 1

SUMMARY

The Marianna Commercial Historic District – located in Marianna, Arkansas, which is the county seat of Lee County – is composed of seventy properties, forty-eight of which are considered contributing to the district. Of these contributing properties, the Lee County Courthouse (LE0023) was previously listed on the National Register of Historic Places on 7 September 1995 and the General Robert E. Lee Monument was listed on 10 May 1996. Including these two National Register-listed properties, the total resource count is seventy. Nineteenth and twentieth century, brick commercial buildings comprise the largest portion of the district. The majority of the commercial buildings display plain storefronts on the first floor, which are capped with restrained raised parapets decorated with a panel brick design – and are therefore, devoid of architectural ornamentation that would associate them with any particular national style – however, a few high-style examples remain.

A focal point of the commercial district is the Court Square Park, which is a contributing site to the district. The Robert E. Lee Memorial (LE0100), listed on the National Register in 1996, is also a contributing object to the district. Although, primarily composed of commercial buildings, the district also contains three contributing buildings that are churches. The Marianna Commercial Historic District is composed of 69% contributing structures and 31% non-contributing structures. Many of the non-contributing buildings are simply sheathed in metal siding or have been altered in ways that are reversible. Construction dates span the years 1884-1949 for the majority of the buildings.

ELABORATION

The Marianna Commercial Historic District is located in close proximity to the L'Anguille River, a tributary of the Mississippi River, and consists of roughly a four-block area located to the north and south of Main Street in downtown Marianna, Arkansas. Comprised of over sixty commercial buildings, they are closely spaced; one, two and three-story; nineteenth and twentieth century brick commercial buildings. Although primarily composed of commercial buildings, the district also contains three contributing buildings that are churches built in the commercial district due to its central location and because of the convenience it afforded residents walking to services (also associated with the Methodist Church is a parsonage).

High-Style Buildings

The historic fabric of the Marianna Commercial Historic District consists primarily of brick masonry, flat roof, party-wall commercial buildings that are one, two, or three-stories in height. Most of these commercial buildings are capped with restrained raised parapets decorated with a panel brick design – and thus are devoid of architectural ornamentation that would associate them with any particular national style – however, several high-style examples remain. There are some commercial buildings, as well as public buildings, that eloquently reflect style influences such as Italianate, Gothic Revival, Neoclassical Revival, Classical Revival, and Art Deco.

Italianate

Two excellent examples of buildings constructed in the Italianate style are the Hayes & Drake Building (LE0153) and the Masonic Lodge Building (LE0123). Constructed in 1884 the Hayes & Drake Building at 38 South Poplar is an excellent example of a commercial building constructed in the Italianate style. Featuring round-arch windows, capped with brick hood molding, the building is highlighted by the elaborately decorated brick panel cornice above the windows. The building also retains its original air vents set in recessed panels below the raised parapet. The 1905 Masonic Lodge Building located at 23 North Poplar is a three-story

United States Department of the Interior
National Park Service

National Register of Historic Places Continuation Sheet

Section number 7 Page 2

building that displays, white brick. The Masonic Lodge is the only commercial building with a white brick veneer in the downtown commercial district. Supported by concrete sills, round-arch windows are topped with decorative brick hood molding that spans the entire length of the building. The parapet is capped by an elaborate metal cornice and modillion course.

Gothic Revival

Because downtown Marianna was a focal point for the entire community, many large churches were built on the periphery of downtown and are included in the commercial historic district. Located on the corner of Church Street and Chestnut Street, First Presbyterian Church (LE0004) is the best example of an intact Gothic Revival building within the Marianna Historic Commercial District. Distinguished by paired rounded arch windows and entrances accented by lancet arch entryways, the First Presbyterian accurately reflects its 1900 construction date. Other defining features include stone lintels, small parapets located along the roofline, and a tower located on the west side of the church topped with a hipped roof with belcaste eaves.

Neoclassical Revival

The Methodist Church (LE0161) located at Poplar Street and Mississippi Street, built in 1912, and the First Baptist Church (LE0145) located at 47 West Main Street, constructed in 1942, are two examples of the Neoclassical style located within the Marianna Commercial Historic District. The Methodist Church, despite its 1949 and 1959 rear additions, eloquently displays ornate Neoclassical detailing. Located on the façade, four large Ionic columns support an elaborate entablature topped by a pediment with a raking cornice; this design is repeated on one of the other side elevations. Smaller pediments are used to top many of the stained glass windows and doors located on the façade of the building. The defining feature of the Methodist Church is the copper dome that adorns the roof of the historic portion of the church.

Classical Revival

The political anchor of Lee County is located within the boundaries of the Marianna Commercial Historic District. Cloaked in Classical Revival detailing, the Lee County Courthouse (LE0023) is a prominent feature of downtown Marianna. Originally constructed as a red brick, two-story, courthouse in the 1890s, the courthouse was remodeled in 1936 when the present-day façade was added. The two-story, yellow brick, limestone and concrete public building features an arcaded entry, a pair of Ionic in antis columns above, and pilasters on the second-story, all of which are typical of the Classical Revival style. The Lee County Courthouse was listed on the National Register of Historic Places on 7 September 1995 with the jail designated as a contributing structure.

Art Deco

The only example of an Art Deco commercial building that lies within the boundaries of the Marianna Commercial Historic District is the Blue Haven Theater (LE0171) at 26 E. Main Street. The building was originally constructed in 1838 as a wholesale grocery store. During the 1930s the building was purchased and renovated to serve as a movie theater for the African American community in Marianna. At that time the building was stuccoed so that it resembles its present-day appearance of a restrained Art Deco building. The defining characteristic of this building is the series of setbacks used as a design element on the upper level of

United States Department of the Interior
National Park Service

National Register of Historic Places Continuation Sheet

Section number 7 Page 3

the building. Historically the businesses located from the Blue Haven Theater east, on both sides of East Main Street, were owned or operated by African Americans. Currently, due to destruction by fires, only three of the buildings that were originally owned by African Americans remain and all are located on Liberty Street. These buildings include the Reed Building #1 (LE0176), Reed Building #2 (LE0176), and the Kennedy Funeral Home (LE0174).

Nineteenth and Twentieth Century Commercial-Style Buildings

The commercial buildings located within the Marianna Commercial Historic District are closely spaced one, two and three-story, nineteenth and twentieth century brick commercial buildings. The majority of the commercial buildings display plain storefronts on the first floor. Most of the storefront spaces have changed, but this is common to historic commercial buildings and should not preclude their consideration as contributing to the district. Often the second or third floor presents a restrained raised parapet decorated with a panel brick design. Therefore many of the commercial buildings are devoid of any architectural ornamentation that would associate them with any particular national style; however, some do display original features which are noteworthy.

Although, simple in design, four consecutive buildings – the McCulloch Building #1 (LE0132), constructed in 1907; the McCulloch Building #2 (LE0133), constructed in 1908; the McCulloch Building #3 (LE0134), constructed in 1908; the McCulloch Building #4 (LE0135), constructed in 1910; and the Delta Building #2 (LE0136), constructed in 1910 – were all built for and originally owned by United States Representative P.D. McCulloch. Each building displays the design of an early twentieth century commercial building. Each brick building is one-story in height and displays its original elaborate cornice. Another intact design feature located on the façade of each building is the original metal air vents, which are set into the recessed brick panel above the storefront. Other decorative detailing includes a metal band located above each storefront and cast iron rosettes that are spaced twelve inches apart.

In 1926, a businessman by the name of W.S. McClintock had four commercial buildings constructed, all of which are identical in size and design (McClintock Buildings #1- #4, LE0154-LE0158). Each of these red brick, one-story buildings support a stepped parapet capped with concrete. The most noteworthy feature on each building is the stark contrast that is provided by the white terracotta against the red brick. The terracotta provides a rectangular border for the original metal air vents. Other terracotta features include a diamond pattern that discontinuously spans the width of each building.

Defining Landscape Features

The focal point of the district is the Court Square Park, which is located directly south of the main entrance to the Lee County Courthouse. The buildings that are located on the streets that surround Court Square Park radiate out from the park in the tradition of the village green. This park has been used as a public gathering place since before 1900 and was originally a place to park mules and wagons. The General Robert E. Lee Monument, built in 1910, was also listed on the National Register of Historic Places on 10 May 1996 and is situated in the center of the park. Today sidewalks radiate from the monument and from the gazebo (built in 1991 that replaced the original gazebo built in 1909) on the north end of the park. The Court Square Park is currently landscaped with oak trees, flowerbeds and sidewalks and serves as a visual focal point for the district.

United States Department of the Interior
National Park Service

National Register of Historic Places Continuation Sheet

Section number 7 Page 4

Originally all of the streets in downtown Marianna were paved with “buffalo” bricks. Today, the brick streets are still evident around three sides of the Court Square Park, the remainder of the streets have long since been paved with asphalt. On the south side of East Main Street, between Poplar Street and Liberty Street, is “High Street.” In the early 1900s the city lowered the street to put in a sewer system which in turn resulted in elevated sidewalks. Unique in appearance this section of roadway is a defining landscape feature in Marianna.

Non-contributing Buildings

The Marianna Commercial Historic District contains a total of 70 resources – forty-eight contributing (69%) and twenty-two non-contributing (31%). Many of the non-contributing buildings are simply sheathed in metal siding or covered with stucco. In most cases, the alterations to the facades are reversible. These buildings continue to preserve the appearance of the commercial streetscape in overall height, setback, and use.

Integrity

The buildings located in the Marianna Commercial Historic District still retain their integrity of location and setting, as they comprise the core of downtown Marianna. Some of the buildings that would otherwise have been considered contributing have had their facades altered by the addition of stucco since 1950. However, despite the 31% non-contributing resources, 69% of the properties are contributing and still retain many of their design characteristics, materials, and historic features, which convey the early workmanship associated with each structure. Although some changes have been made to the entryways and display areas on the first level of some of the commercial buildings, the overall feeling of the district is intact as this historic city center conveys the ambience of an early twentieth-century commercial area.

8. Statement of Significance**Applicable National Register Criteria**

(Mark "x" in one or more boxes for the criteria qualifying the property for National Register listing.)

☒ **A** Property is associated with events that have made a significant contribution to the broad patterns of our history.

☐ **B** Property is associated with the lives of persons significant in our past.

☒ **C** Property embodies the distinctive characteristics of a type, period, or method of construction or represents the work of a master, or possesses high artistic values, or represents a significant and distinguishable entity whose components lack individual distinction.

☐ **D** Property has yielded, or is likely to yield, information important in prehistory or history.

Criteria Considerations

(Mark "x" in all the boxes that apply.)

Property is:

☒ **A** owned by a religious institution or used for religious purposes.

☐ **B** removed from its original location.

☐ **C** moved from its original location.

☐ **D** a cemetery.

☐ **E** a reconstructed building, object, or structure.

☒ **F** a commemorative property

☐ **G** less than 50 years of age or achieved significance within the past 50 years.

Levels of Significance (local, state, national)

Local

Areas of Significance (Enter categories from instructions)

Community Planning & Development

Architecture

Period of Significance

1884-1950

Significant Dates

1884, 1909, 1910, 1918, 1920s (fire), 1950

Significant Person (Complete if Criterion B is marked)

N/A

Cultural Affiliation (Complete if Criterion D is marked)

N/A

Architect/Builder

George Mahan , Everette Woods, and Estes Mann – Architects

Jennings and Samuel – Builders

Narrative Statement of Significance

(Explain the significance of the property on one or more continuation sheets.)

SEE CONTINUATION SHEETS.

United States Department of the Interior
National Park Service

National Register of Historic Places Continuation Sheet

Section number 8 Page 1

SUMMARY

The Marianna Commercial Historic District served as the center of the town's business, civic, cultural, and social life since the early 1870s. The district is being nominated to the National Register **with local significance** under **Criterion A** for its association with the early development of a commercial center in the Arkansas Delta. It is also being nominated under **Criterion C** because it possesses a significant concentration, linkage, and continuity of sites, buildings, structures, and objects that reflect nineteenth and twentieth-century commercial architectural styles as well as other high-style designs. Located within the boundaries of this district are the Lee County Courthouse, listed on the National Register of Historic Places on 7 September 1995 under Criterion C, with local significance; and the General Robert E. Lee Monument, listed on the National Register on 10 May 1996 under Criteria A, with statewide significance for its association with the efforts of the D.G. Govan Chapter of the United Daughters of the Confederacy to reflect members' perception of the noble character and valor of their veterans and their cause. Thus, this nomination also meets the eligibility requirements of **Criteria Consideration F: Commemorative Properties**. Because of the religious structures located within the boundaries of this district, this nomination also meets the requirements of **Criteria Consideration A: Religious Properties**.

ELABORATION

Marianna was originally settled in 1857 as a small village on the L'Anguille River. The site was chosen because of its close location to the water and because the elevation was 25 feet above the highest recorded high water mark known at that time. During westward expansion, towns such as Memphis, Helena, Vicksburg, Natchez, and New Orleans developed along the Mississippi River because of the need for transporting goods and people to the interior of the United States. The chosen site for the town of Marianna was significant because of its close proximity to the L'Anguille River, a tributary of the Mississippi River, which allowed access to markets for trade around the world.

Marianna was incorporated in 1870, thirteen years after the establishment of the navigation head of the L'Anguille River. The area's economy depended on the cotton and timber industries with cotton being the chief or "King" crop grown in Lee County. Marianna's cotton carried a premium and turned in to one of the leading cotton markets west of the Mississippi. Since Marianna had access to the Mississippi River, steamboats would bring goods from Memphis to Marianna and then take the cotton bales back to Memphis on the return trip. Early in the town's history the area that is now "downtown" Marianna was the "hub" of the community as the boat landing was located at the end of Main Street a few blocks from the downtown commercial district. Several of the mills were located along the banks of the river in the vicinity of downtown. The large lumber companies used the river to haul and push logs to their mills in Marianna.

By 1873, the downtown commercial district was becoming the heart of the town both from a business and a social standpoint. In that year, John R. Jarratt built the first brick store downtown on the southeast corner of Main and Poplar Streets. It was a two-story building used for general mercantile. This building stood until the 1990s when it was razed along with several others on the same block due to their deteriorated condition. This event, which altered the historic appearance of the streetscape around the City Square, was the impetus for the beginning of a preservation movement in Marianna.

United States Department of the Interior
National Park Service

National Register of Historic Places Continuation Sheet

Section number 8 Page 2

During the 1880s several more brick commercial buildings were erected downtown. The Hayes and Drake building (1884) was designed to meet the social needs of the town as it boasted of a large meeting hall on the second floor which was known as "the opera house" because of the artistic performances and traveling road shows held there. The building also played host to local productions and social events. The trade represented 25 or more establishments carrying stock from \$3,000 to \$40,000 with an annual patronage of \$500,000. The leading general merchandise firms were Lesser Bros., Johnson and Grove, Jarratt and Co., P.E. Northern, Brickey Bros., and Beecher and Co. During the 1890's Marianna's downtown commercial district continued to grow. A new brick courthouse was erected on Chestnut Street just to the north of the open public space, which was used as a wagon yard and hitching post.

During the later part of the nineteenth century, the Iron Mountain Railroad played an important role in travel and trade for Marianna. Highway construction also improved and the need for river transportation began to decline. By 1897 most major steamboat lines had stopped their regular routes. However, three large sawmills, Miller Lumber Co., Indiana and Arkansas Lumber Co., and the L'Anguille Lumber Co. continued to use the river to transport logs. The shipment of lumber from the mills almost equaled the value of the cotton crop. Large quantities of this excellent hardwood were shipped to Europe.

Marianna continued to grow during the 1900s and was larger than all of the surrounding towns. The population increased from 1,707 in 1900 to 4,810 in 1910. A building boom resulted in the construction of new brick buildings on every street in the downtown commercial area. The Harrington Drugstore, a two-story brick building was constructed in 1911 and was very important to the downtown area.

Not only was brick construction becoming popular for commercial buildings, but also for public buildings. The Presbyterian Church was constructed in 1900 by a congregation that had outgrown its original wooden building on the same site. In 1909, a contract was let to build a two-story brick building to the east of the city park to house City Hall and the fire department (this building and several others on Court Street are considered non-contributing due to the later addition of stucco on the facades. In 1912 the Methodist congregation constructed the Methodist Church, with its Neoclassical design influences and copper dome. Today it serves to anchor the southern perimeter of the district and to demarcate the commercial district from the beginnings of the residential neighborhoods on the southern part of the town (First Baptist Church, the last of the major religious buildings, was built and dedicated in 1941).

The citizens of Marianna were concerned with constructing new buildings but they were also interested in the beautification of the city. In 1908 concrete sidewalks were added and the streets were paved with Buffalo bricks (these brick streets were later covered with asphalt in the 1970s on all but the streets on the east and south sides of the City Square Park). In 1909, the ladies of the Civic Improvement League took over the City Park where they built sidewalks, landscaped the grounds, and built a bandstand (which was replaced with a new gazebo in the late 1980s). One of the key features in the park is a marble monument of General Robert E. Lee, for whom Lee County was named, which stands in the center of the City Square Park (NR listed 10 May 1996). The D. G. Govan Chapter of the United Daughters of the Confederacy placed the statue in the park in 1910.

The people of Marianna enjoyed growth and prosperity but they also experienced the hardship and loss that fire and destruction can bring. Fire ravaged several buildings on South Poplar Street in 1918, with over a million dollars worth of damage done to businesses on the street. However, the citizens of Marianna responded and almost immediately new buildings were constructed to take their place and most of these are still in use today (one building has seen major

United States Department of the Interior
National Park Service

National Register of Historic Places Continuation Sheet

Section number 8 Page 3

deterioration and is currently in danger of being lost but efforts are presently being made to persuade the owner to sell the property to the Marianna Historic Trust). Again, fire ravaged South Poplar Street in the 1920s (the side opposite of the 1918 fire) and again prosperous business conditions were such that new brick commercial buildings were erected to replace those lost in the fire. New construction was not confined to replacing the burned buildings. In 1926 new masonry buildings such as the Turner Drugstore and the Post Office were built to the city.

During the 1930s and 1940s, downtown Marianna prospered. Every building was occupied, stores stayed open on Saturday evenings until midnight to accommodate the droves of people who came to town to shop. Retail establishments occupied the ground floors with professionals such as lawyers and doctors occupying offices on the upper floors. Though there were neighborhood groceries, the large grocery stores were located downtown. Everything from grocery stores to movie houses was located downtown within easy walking distance of residential neighborhoods. From the turn of the century until the 1940s Marianna was one of the large towns in the Delta region that enjoyed prosperity. Today the oldest surviving building is the Hayes and Drake Building constructed 1884 which serves to remind the citizens of Marianna that their history still lives on.

The Reed Building #2 (presently Kennedy Funeral Home) was the last building constructed circa 1950 during Marianna's "historic period." Unlike the previous decades, the 1950s and 1960s saw the proliferation of automobiles and strip shopping centers on the outskirts of town as the Marianna downtown commercial district began to decline. During the late 1990s, however, many residents came to realize that the historic commercial district holds the key to the history of the town and that it is important to preserve that history. The district is composed primarily of commercial properties in the late nineteenth and early twentieth century commercial styles with other buildings of importance including government and religious facilities, which were deeply imbedded in the fabric of life in the town. Most of these structures continue to evoke the commercial landscape of Marianna, although some have been altered to varying degrees.

Significance

The Marianna Commercial Historic District is being nominated to the National Register under **Criterion A**, with **local significance** for its association with the early development of a commercial center in the Arkansas Delta. The district is also being nominated under **Criterion C**, because it possesses a significant concentration, linkage, and continuity of sites, buildings, structures, and objects that reflect nineteenth and twentieth-century commercial architectural styles as well as other high-style designs. The nomination is also meets the eligibility requirements of **Criteria Consideration F: Commemorative Properties** and **Criteria Consideration A: Religious Properties**.

9. Major Bibliographical References**Bibliography**

(Cite the books, articles, and other sources used in preparing this form on one or more continuation sheets.)

Courier Index, 1917-1953.

Lee County Courier, 1898-1917.

Lee County Deed Records, 1873-present.

Lee County History Book.

Lee County Tax Records, 1873-present.

Marianna Centennial Book.

Marianna City Council Minutes, 1880-1960.

McAlester, Virginia and Lee. A Field Guide to American Houses, New York: Alfred A. Knopf Publishing Company, 1998.**Previous documentation on file (NPS):**

- ☐ preliminary determination of individual listing (36 CFR 67) has been requested
- ☐ previously listed in the National Register
- ☐ Previously determined eligible by the National Register
- ☐ designated a National Historic Landmark
- ☐ recorded by Historic American Buildings Survey

- ☐ recorded by Historic American Engineering
Record # _____

Primary location of additional data:

- ☒ State Historic Preservation Office
- ☐ Other State Agency
- ☐ Federal Agency
- ☐ Local Government
- ☐ University
- ☐ Other

Name of repository:
_____**10. Geographical Data****Acreage of Property** Less than 26 acres**UTM References**

(Place additional UTM references on a continuation sheet.)

A	<u>15</u> Zone	<u>705410</u> Easting	<u>3850400</u> Northing
B	<u>15</u> Zone	<u>705390</u> Easting	<u>3849660</u> Northing

C	<u>15</u> Zone	<u>704920</u> Easting	<u>3850015</u> Northing
D	_____	_____	_____

☐ See continuation sheet

Verbal Boundary Description

(Describe the boundaries of the property on a continuation sheet.)

Beginning at a point or origin on the northwest corner of the property at 58 West Main Street, proceed east along the rear property line to Church Street. The boundary then turns and runs north to West Chestnut Street, where the boundary then turns and proceeds east along West Chestnut Street to the rear property line at the northeast corner of the Presbyterian Church. At the northeast corner of the church the boundary then proceed south along the rear property line of the church to the alley on the south side of the church property. Next the boundary turns and runs east along the service alley to a point behind the buildings 13-23 North Poplar Street where the alley turns to the north again. Continuing to follow the alley north to West Chestnut Street, the boundary then turn east on West Chestnut Street and runs to the corner of West Chestnut and Cedar Streets. Turning north along Cedar Street the boundary continues north to Henry Street where it then turns east and follows Henry Street until it joins Cemetery Avenue at which point the boundary continues south until it joins East Chestnut Street and turns east. The boundary runs east until it joins with North Liberty Street where it turns and runs south until it joins East Main Street. At East Main Street the boundary continues east to the northeast corner of the property at 11 South Liberty, at this point the boundary turns and runs south along the rear property lines of 11-25 South Liberty Street to the southeast corner of the property at 25 South Liberty. The boundary turns west and continues along the south side of the property at 25 South Liberty Street until it joins South Liberty Street. The boundary then continues south until it meets East Mississippi Street where the boundary turns west and continues along East Mississippi to South Poplar Street. Following South Poplar Street the boundary runs north until it meets West Tennessee Street where the boundary turns west and follows West Tennessee Street to the alley to the rear of 40 S. Poplar Street at which point the boundary runs north along the alley to McClintock's Lane. At McClintock's Lane the boundary continues west to Church Street where it turns north at the corner of Church and Main Streets. The boundary turns west and extends to the southwest corner of the property at 58 West Main where the boundary turns north and continues to the its point of origin at the northwest corner of the property at 58 West Main Street.

See attached sketch map.

Boundary Justification

(Explain why the boundaries were selected on a continuation sheet.)

The boundary includes the properties within an area in downtown Marianna that retain integrity and are associated with the functioning of Marianna as a commercial center. The boundary excludes, where possible, properties that have lost integrity and/or have no significance.

11. Form Prepared By

name/title Jo Ella Turner and Nancy Apple (edited by Kara Mills, National Register & Survey Coordinator)
organization _____ date _____
street & number _____ telephone _____
city or town _____ state _____ zip code _____

Additional Documentation

Submit the following items with the completed form:

Continuation Sheets**Maps**A **USGS map** (7.5 or 15 minute series) indicating the property's locationA **Sketch map** for historic districts and properties having large acreage or numerous resources.**Photographs**Representative **black and white photographs** of the property.**Additional items** (Check with the SHPO or FPO for any additional items.)

UNITED STATES DEPARTMENT OF THE INTERIOR
NATIONAL PARK SERVICE

NATIONAL REGISTER OF HISTORIC PLACES
EVALUATION/RETURN SHEET

REQUESTED ACTION: NOMINATION

PROPERTY NAME: Marianna Commercial Historic District

MULTIPLE
NAME:

STATE & COUNTY: ARKANSAS, Lee

DATE RECEIVED: 11/24/00
DATE OF 16TH DAY: 12/22/00
DATE OF WEEKLY LIST:

DATE OF PENDING LIST: 12/06/00
DATE OF 45TH DAY: 01/08/01

REFERENCE NUMBER: 00001559

NOMINATOR: STATE

REASONS FOR REVIEW:

APPEAL: N DATA PROBLEM: N LANDSCAPE: N LESS THAN 50 YEARS: N
OTHER: N PDIL: N PERIOD: N PROGRAM UNAPPROVED: N
REQUEST: N SAMPLE: N SLR DRAFT: Y NATIONAL: N

COMMENT WAIVER: N

☒ ACCEPT ☐ RETURN ☐ REJECT 01/04/01 DATE

ABSTRACT/SUMMARY COMMENTS:

The Marianna Commercial Historic District is significant on a local level under Criterion A for Community Planning and Development as the commercial center of this Arkansas Delta community, and under Criterion C for Architecture for its concentration of 19th and early 20th century commercial buildings.

RECOM./CRITERIA A, C

REVIEWER Sarah Ripe

DISCIPLINE Historian

TELEPHONE 202/343-9524

DATE 01/04/01

DOCUMENTATION see attached comments Y/N ☒ see attached SLR ☒ Y/N

United States Department of the Interior
National Park Service

**National Register of Historic Places
Continuation Sheet**

Section number _____ Page _____

SUPPLEMENTARY LISTING RECORD

NRIS Reference Number: 00001559

Date Listed: 01/04/01

Property Name: Marianna Commercial Historic District

County: Dallas State: AR

Multiple Name: N/A

This property is listed in the National Register of Historic Places in accordance with the attached nomination documentation subject to the following exceptions, exclusions, or amendments, notwithstanding the National Park Service certification included in the nomination documentation.

(for) Avaah D. Pope
Signature of the Keeper

01/04/00
Date of Action

=====

Amended Items in Nomination

This district is not an appropriate addition to the *Civil War Commemorative Sculpture MPS*. An amendment is made to delete *Civil War Commemorative Sculpture MPS* from "Name of related multiple property listing" in Section 5 of the nomination.

Under Section 10 of the nomination, the acreage is given as "Less than 26 acres." Per National Register bulletin, *How to Complete the National Register Registration Form*, the acreage should be rounded to the nearest whole acre. An amendment is made to change the acreage to 26 acres.

This information was confirmed with Kara Mills of the Arkansas SHPO.

DISTRIBUTION:

National Register property file

Nominating Authority (without nomination attachment)



The Department of Arkansas Heritage

Mike Huckabee, Governor
Cathie Matthews, Director

Arkansas Arts Council

Arkansas Natural Heritage
Commission

Delta Cultural Center

Historic Arkansas Museum

Mosaic Templars
Cultural Center

Old State House Museum



Arkansas Historic Preservation Program

1500 Tower Building

323 Center Street

Little Rock, AR 72201

(501) 324-9880

fax: (501) 324-9184

tdd: (501) 324-9811

e-mail:

info@arkansaspreservation.org

website:

www.arkansaspreservation.org

An Equal Opportunity Employer



December 7, 2005

Dr. Janet Matthews
Chief of Registration
United States Department of the Interior
National Register of Historic Places
National Park Service
8th Floor
1201 Eye Street, NW
Washington, DC 20005

RE: Marianna Commercial Historic District – Marianna, Lee
County, Arkansas

Dear Dr. Matthews:

We are enclosing for your review additional documentation for the above-referenced nomination. The Arkansas Historic Preservation Program has complied with all applicable nominating procedures and notification requirements in the nomination process.

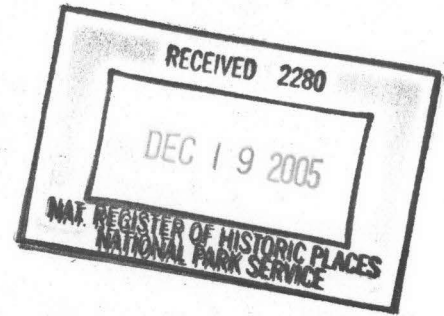
If you need further information, please call Ralph S. Wilcox of my staff at (501) 324-9787. Thank you for your cooperation in this matter.

Sincerely,

Cathie Matthews
State Historic Preservation Officer

CM:rsw

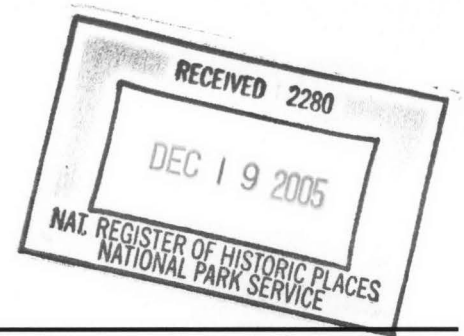
Enclosure



United States Department of the Interior
National Park Service

National Register of Historic Places Continuation Sheet

Section number 5 Page 1



The revised number of contributing resources within the district is 52 (51 buildings and 1 site) and the revised number of non-contributing resources within the district is 16 (15 buildings and 1 structure).

The properties within the district are:

<i>Resource Number:</i>	<i>Name:</i>	<i>Address:</i>	<i>C/NC:</i>
LE0004	First Presbyterian Church	W. Chestnut & N. Church	C
LE0023	Lee County Courthouse	16 E. Chestnut	I
LE0100S	General Robt. E. Lee Monument	Town Square	I
LE0116	Court Square Park	Poplar & Main	C
LE0118	Rankin Building	11-13 W. Chestnut	C
LE0119	Lewis Hotel Building	33 N. Poplar	C
LE0120	Lewis Grocery Building	29 N. Poplar	NC
LE0121	Turpin Building #2	27 N. Poplar	NC
LE0122	Lowenthal Building	25 N. Poplar	C
LE0123	Masonic Lodge Building	23 N. Poplar	C
LE0124	McClintock Building #5	17 N. Poplar	C
LE0125	Turpin Building #1	15 N. Poplar	C
LE0126	Lesser Building #3	13 N. Poplar	C
LE0127	Lesser Building #2	11 N. Poplar	C
LE0128	Lesser Building #1	9 N. Poplar	C
LE0129	Lee County National Bank Building	3 N. Poplar	C
LE0130	Lesser Building #5	16 W. Main	NC
LE0131	Lesser Building #6	18 W. Main	C
LE0132	McCulloch Building #1	20-22 W. Main	C
LE0133	McCulloch Building #2	24 W. Main	C
LE0134	McCulloch Building #3	26 W. Main	C
LE0135	McCulloch Building #4	28 W. Main	C
LE0136	Delta Building #2	30 W. Main	C
LE0137	Delta Building #1	34 W. Main	C
LE0138	Ford Building	38 W. Main	C
LE0139	Shorten Building #1	40 W. Main	C
LE0140	Shorten Building #2	42 W. Main	C
LE0141	Shorten Building #3	44 W. Main	C
LE0142	455 Service Station Building	46-48 W. Main	NC
LE0143	Banks Building	16 N. Church	C
LE0146	First National Bank Building	33 W. Main	NC
LE0147	Markley Building #2	19 W. Main	C
LE0148	Markley Building #1	17 W. Main	C

United States Department of the Interior
National Park Service

National Register of Historic Places Continuation Sheet

Section number 5 Page 2

<i>Resource Number:</i>	<i>Name:</i>	<i>Address:</i>	<i>C/NC:</i>
LE0149	U.S. Post Office Building	58 W. Main	C
LE0150	Turpin Building #3	13-15 W. Main	C
LE0151	Turner's Drug Store Building	8 S. Poplar	C
LE0152	Chisum & Badley Building	10 S. Poplar	C
LE0153	Hayes & Drake Building	12 S. Poplar	C
LE0154	McClintock Building #4	28 S. Poplar	C
LE0155	McClintock Building #3	30 S. Poplar	C
LE0156	McClintock Building #2	32 S. Poplar	C
LE0157	McClintock Building #1	34 S. Poplar	C
LE0158	Owl Lunchroom Building	38 S. Poplar	C
LE0159	Williamson Building	40 S. Poplar	C
LE0160	First United Methodist Parsonage	19 E. Mississippi	C
LE0161	First United Methodist Church	59 S. Poplar	C
LE0162	Chisum-Burnett Building	55 S. Poplar	C
LE0164	Williams Building	21 E. Columbia	C
LE0165	Futrall Building	31 S. Poplar	C
LE0166	Boon Building	25 S. Poplar	C
LE0167	Frazier Building	23 S. Poplar	C
LE0168	Lovelace Building	21 S. Poplar	C
LE0169	Harinton Drug Store Building	19 S. Poplar	C
LE0170	Courtyard Square Apartments	14-24 E. Main	NC
LE0171	Blue Haven Theatre	26 E. Main	C
LE0172	Isom's Barber Shop Building	27-28 E. Main	NC
LE0173	Mixon Building	30-34 E. Main	NC
LE0174	Kennedy Funeral Home	25 S. Liberty	C
LE0175	Reed Building #2	13 S. Liberty	NC
LE0176	Reed Building #1	11 S. Liberty	C
LE0177	Alpha Building	4-10 Court	C
LE0178	McClintock Building #6	6 Court	NC
LE0179	Lesser Building #4	12 Court	NC
LE0180	City Hall	14-16 Court	NC
LE0181	McClintock Building #7	20-22 Court	NC
LE0182	Karicofe Hardware Building #1	26-28 Court	NC
LE0183	Karicofe Garage Building #2	30-34 Court	C
LE0184	McClintock Building #8	32 N. Liberty	C

United States Department of the Interior
National Park Service

National Register of Historic Places Continuation Sheet

Section number 8 Page 1

SUMMARY

The Marianna Commercial Historic District was originally listed on the National Register of Historic Places on January 4, 2001, with a period of significance of 1884-1950. The original district was listed with **local significance** under **Criterion A** for its association with the early development of a commercial center in the Arkansas Delta. It is also being nominated under **Criterion C** because it possesses a significant concentration, linkage, and continuity of sites, buildings, structures, and objects that reflect nineteenth and twentieth-century commercial architectural styles as well as other high-style designs. It was also listed under **Criteria Consideration F: Commemorative Properties** and **Criteria Consideration A: Religious Properties**.

The purpose of this amendment, in addition to altering the number of contributing and non-contributing properties within the district, is to change the period of significance from 1884-1950 to 1884-1956. Commercial activity remained important in downtown Marianna throughout the 1950s, and extending the period of significance will reflect the continuing importance of commerce in downtown Marianna. In addition, when the original nomination was listed, there were several properties in the district that had been altered in the early 1950s with the application of stucco to their exterior façades. Although they were initially non-contributing, the alterations have achieved some significance in their own right since they reflect the changing architectural tastes in downtown Marianna in the 1950s.

ELABORATION

Prior to the 1950s, Marianna was one of the large towns in the Delta region that enjoyed prosperity. Everything from grocery stores to movie houses was located downtown within easy walking distance of residential neighborhoods. Unlike the previous decades, the 1950s and 1960s saw the proliferation of automobiles and strip shopping centers on the outskirts of town as the Marianna downtown commercial district began to decline. However, Marianna's downtown area did continue to serve some of the commercial needs of the city's residents and continues to today.

Beginning in the late 1940s and early 1950s, a trend seems to have started in downtown Marianna in which building owners began to apply stucco to their buildings' façades. Whether it was done to avoid having to deal with maintenance problems associated with the masonry or to give the buildings a modern sleek look is not known, but there are several buildings that exhibit this trend.

The Willey Building at 33 N. Poplar (Site #LE0119) is a good example of this phenomenon. Built in 1907 as the Lewis Hotel & Café, the building was altered c.1953 with the application of stucco, and Carrara glass, and metal accents on the new storefront. The new look of the Willey Building was definitely more in keeping with the trends of the mid-twentieth century and a great departure from its original 1907 appearance. Other buildings that received stucco façades at about the same time included the Karicofe Garage at 30-34 Court (Site #LE0183) and the Alpha Building at 4-10 Court (Site #LE0177).

Marianna Commercial Historic District
Name of Property

Lee County, Arkansas
County and State

United States Department of the Interior
National Park Service

National Register of Historic Places

Continuation Sheet

Section number 8 Page 2

Today the district still reflects Marianna's commercial past. Although the downtown is not as active as it once was, it still does provide goods and services to Marianna's residents. Additionally, the district still reflects its late-nineteenth and twentieth-century appearance, illustrating the change in tastes of commercial architecture through the years.

United States Department of the Interior
National Park Service

National Register of Historic Places Continuation Sheet

Section number 9 Page 1

BIBLIOGRAPHY

Turner, Jo Ella, and Nancy Apple. "Marianna Commercial Historic District." National Register of Historic Places Registration Form. From the files of the Arkansas Historic Preservation Program, 2001.

Survey files for buildings within the Marianna Commercial Historic District. From the files of the Arkansas Historic Preservation Program, 1999.

UNITED STATES DEPARTMENT OF THE INTERIOR
NATIONAL PARK SERVICE

NATIONAL REGISTER OF HISTORIC PLACES
EVALUATION/RETURN SHEET

REQUESTED ACTION: ADDITIONAL DOCUMENTATION

PROPERTY NAME: Marianna Commercial Historic District

MULTIPLE
NAME:

STATE & COUNTY: ARKANSAS, ~~Dallas Lee~~

DATE RECEIVED: 12/19/05 DATE OF PENDING LIST:
DATE OF 16TH DAY: DATE OF 45TH DAY: 2/01/06
DATE OF WEEKLY LIST:

REFERENCE NUMBER: 00001559

REASONS FOR REVIEW:

APPEAL: N DATA PROBLEM: N LANDSCAPE: N LESS THAN 50 YEARS: N
OTHER: N PDIL: N PERIOD: N PROGRAM UNAPPROVED: N
REQUEST: N SAMPLE: N SLR DRAFT: N NATIONAL: N

COMMENT WAIVER: N

☒ ACCEPT ☐ RETURN ☐ REJECT 1.26.06 DATE

ABSTRACT/SUMMARY COMMENTS:

Additional Documentation Accepted

RECOM./CRITERIA Accept

REVIEWER Edson Beall

DISCIPLINE History

TELEPHONE _____

DATE 1.26.06

DOCUMENTATION see attached comments Y/N see attached SLR Y/N

If a nomination is returned to the nominating authority, the nomination is no longer under consideration by the NPS.



Lee County Courthouse

16 E. Chestnut

Marianna Commercial Historic District

Lee County, Arkansas

Nancy Apple, Photographer

August 26, 2000

Negative on file at AHPP

View from northeast corner of Court Square Park

looking north toward south elevation of
Courthouse

Photograph #1



WILLEY BUILDING

Lewis Hotel Building

33 N. Poplar

Marianna Commercial Historic District

Lee County, Arkansas

Nancy Apple, Photographer

August 26, 2000

Negative on file - AHPP

camera facing northwest toward east
elevation of Lewis Hotel

Photograph #2



Masonic Lodge Building

23 N. Poplar

Marianna Commercial Historic District

Lee County, Arkansas

Nancy Apple, Photographer

August 26, 2000

Negative on file AHPP

camera pointed northwest toward
east elevation of Masonic Lodge

Photograph #3



McClintock Building #5

17 N. Poplar

Marianna^{Commercial} Historic District

Lee County, Arkansas

Nancy Apple, Photographer

August 26, 2000

Negative on file AHPP

Camera facing northwest toward east
elevation of McClintock #5

Photograph #4



1. Harrington Bldg
19 S. Poplar
Marianna Commercial Historic District
2. Lee Co., AR
3. Nancy Apple
4. 08-26-00
5. AHPP
6. camera facing east toward
west elevation of bldg
7. Photo #5



1. McClintock's Bldgs #1-4
28-30-32-34 S. Poplar
Marianna Commercial
Historic District

2. Lee Co, AR

3. Nancy Apple

4. 08-26-00

5. AHPP

6. camera facing northwest
toward west elevation
of bldgs

7. Photo #6



1. Hayes-Drake Bldg

12 S. Poplar

Marianna Commercial Historical

2. Lee Co AR

3. Nancy Apple

4. 08-26-00

5. AHPP

6. camera facing west
toward east elevation
of bldg

7. Photo # 7



1. Owl Lunch Room Building

38 S. Poplar

Marianna Commercial Historic District

2. Lee Co., AR

3. Nancy Apple

4. 08-26-00

5. AHPP

6. camera facing west toward
east elevation of building

7. Photo # 8



1. Methodist Church
59 S. Poplar

Marianna Commercial Historic District

2. Lee Co., AR

3. Nancy Apple

4. 08-26-00

5. AHPP

6. camera facing northeast toward
south elevation of church

7. Photo # 9



1. Blue Haven Theater Bldg.

26 E. Main

Marianna Commercial Historic District

2. Lee Co., AR

3. Nancy Apple

4. 08-26-00

5. AHPP

6. camera facing Southeast
toward north elevation
of theater

7. Photo #10



1. Alpha Bldg. & McClintock #6

4-6 Court St.

Marianna Commercial Historic District

2. Lee Co., AR

3. Nancy Apple

4. 08-26-00

5. AHPP

6. camera facing northeast toward
west and south elevations

7. Photo # 11



1. Streetscape, E. Main St.
Showing "high" sidewalks
24-33 E. Main

Marionna Commercial Historic District

2. Lee Co., AR
3. Nancy Apple

4. 08-26-00

5. AHPP

6. Camera facing southeast toward
north elevations of building

7. Photo #12



ROBERT'S DINER

MON - THURS
FRI - SAT
SUN

NEW
BEPUTY
SHOP

Closed

1. McCulloch Bldg #1
20-22 W. Main

Marianna Commercial Historic District

2. Lee Co., AR

3. Nancy Apple

4. 08-26-00

5. AHPP

6. camera facing northwest toward
south elevation of building

7. PHOTO #13



1. First Baptist Church

47 W. Main

Marianna Commercial Historic District

2. Lee Co., AR

3. Nancy Apple

4. 08-26-00

5. AHPP

6. camera facing south toward north
elevation of church

7. Photo #14



1. Presbyterian Church

Corner Church & W. Chestnut Sts.

Marianna Commercial Historic District

2. Lee Co., AR

3. Nancy Apple

4. 08-26-00

5. AHPP

6. camera facing northeast toward
west elevation of church

7. Photo #15



1. Streetscape, W. Main St.

Marianna Commercial Historic District

2. Lee County, AR

3. Nancy Appie

4. 08-26-00

5. AHPP

6. camera facing west northwest down W. Main

7. Photo #16



1. Street Scape, N. Poplar

Marianna Commercial Historic District

2. Lee Co., AR

3. Nancy Apple

4. 08-26-00

5. AHPP

6. Camera facing north northeast toward
east elevations of buildings

7. PHOTO #17



1. Streetscape, E. Main Showing brick street
and flower planting bed

MARIANA Commercial Historic District

2. Lee Co., AR

3. Nancy Apple

4. 08-26-00

5. AHPP

6. Camera facing east down E. main street

7. PHOTO #18



1. Robert E. Lee Monument
Court Square Park
Marianna Commercial Historic District
2. Lee County, Arkansas
3. Nancy Apple
4. 08-26-00
5. AHPP
6. Camera facing northeast
toward monument's south
face
7. Photo #19



Court Square Park

Marianna Commercial Historic District

Lee County, Arkansas

Nancy Apple, Photographer

August 26, 2000

Negative on file AHPP

From E. Main, camera
facing north toward park.

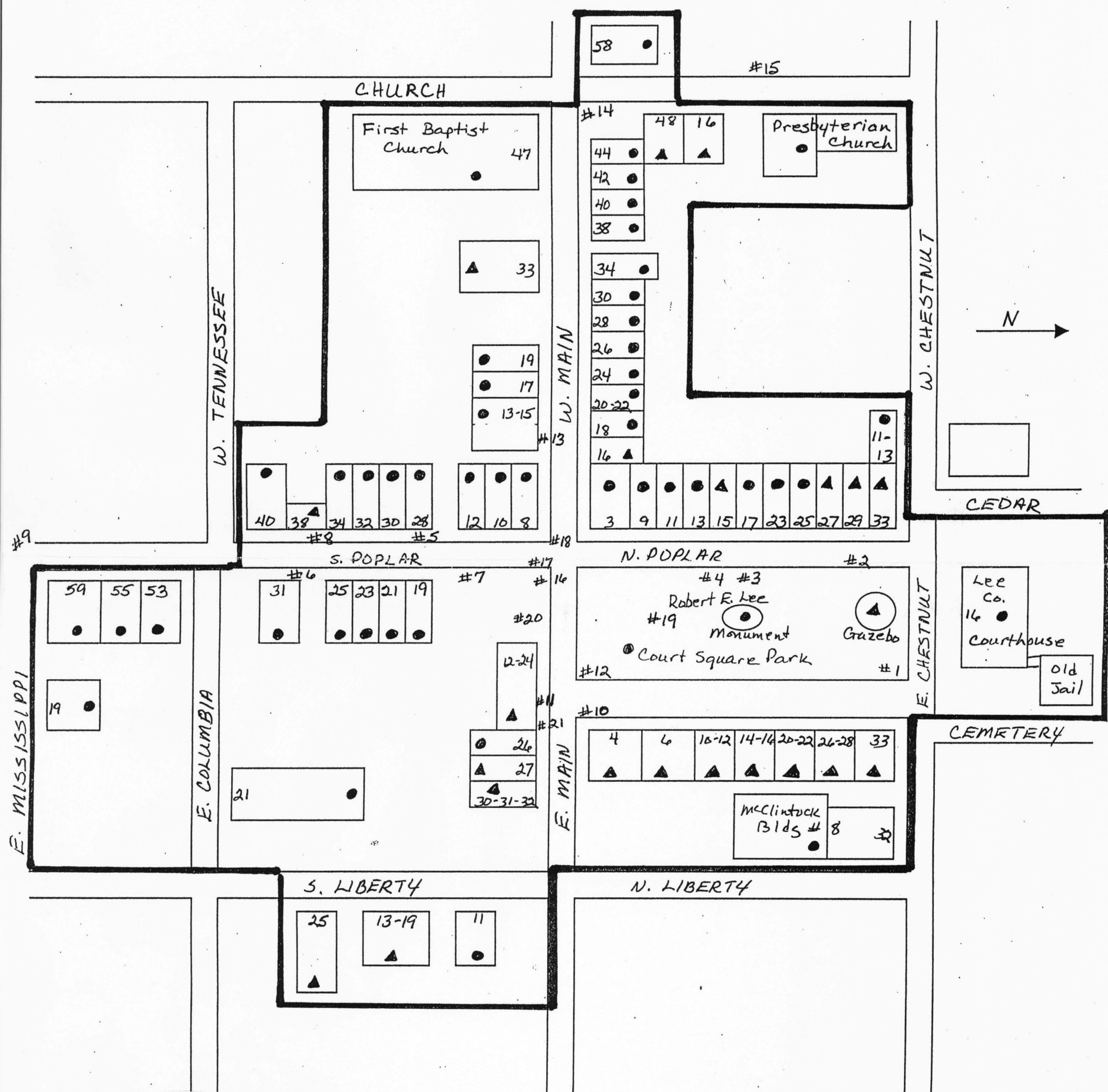
Photograph #20



Streetscape featuring brick street
on E. Main and south end of
Court Square Park
Marianna Commercial Historic District
Lee County, Arkansas
Nancy Apple, Photographer
August 26, 2000
Negative on file, AHPP


camera situated on southwest
corner of intersection of Court
and E. Main facing southern
end of park with building at
3. N. Poplar in background

Photograph # 21



**Marianna Commercial Historic District
Marianna, Arkansas
Lee County**

- = CONTRIBUTING
- ▲ = NONCONTRIBUTING
- #_ = Corresponds with the numbers on the back of the photographs to indicate the location from which the photographs were taken



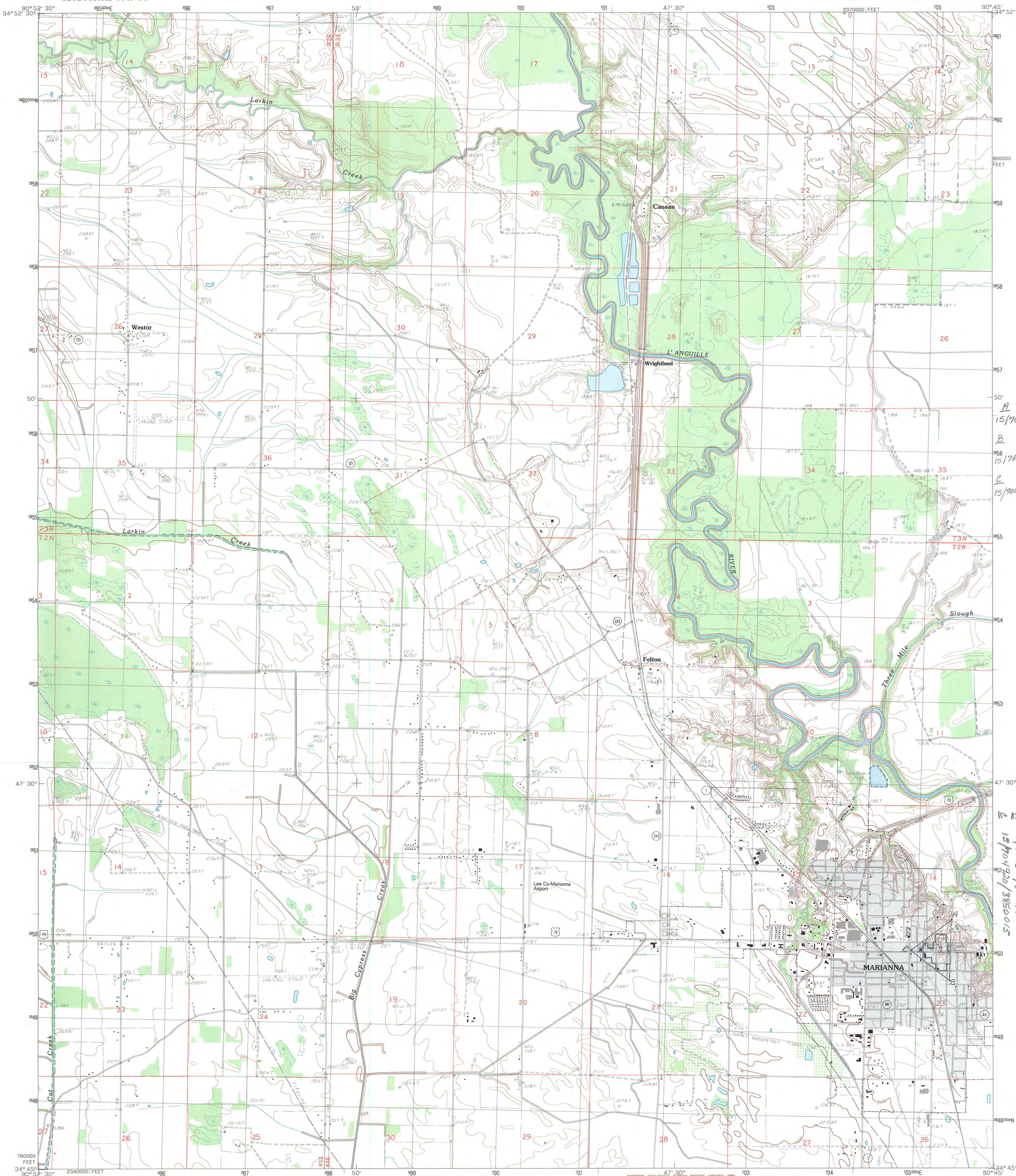
Insert

Oversized Scan

Here

Page #

Image #



PRODUCED BY THE UNITED STATES GEOLOGICAL SURVEY
CONTROL BY.....USGS AND NOS/NOAA
COMPILED FROM AERIAL PHOTOGRAPHS TAKEN.....1979-1980
FIELD CHECKED.....1982. MAP EDITED.....1984
PROJECTION.....LAMBERT CONFORMAL CONIC
GRID: 1000-METER UNIVERSAL TRANSVERSE MERCATOR.....ZONE 15
10,000-FOOT STATE GRID TICS.....ARKANSAS, SOUTH ZONE
UTM GRID DECLINATION.....1927 NORTH AMERICAN DATUM (NAD 27)
1992 MAGNETIC NORTH DECLINATION.....2°00' EAST
HORIZONTAL DATUM.....NATIONAL GEODETIC VERTICAL DATUM OF 1929
VERTICAL DATUM.....1929 NORTH AMERICAN DATUM (NAD 27)
North American Datum of 1983 (NAD 83) is shown by dashed
corner ticks. The values of the shift between NAD 27 and NAD
83 for 7.5-minute intersections are given in USGS Bulletin 1875
There may be private inholdings within the boundaries of any
Federal or State reservations shown on this map
No distinction made between houses, barns, and other buildings
Gray tint indicates area in which selected buildings are shown
Photinspected from 1990 sources; no major culture or drainage
changes observed. Boundaries revised and names verified 1992

PROVISIONAL MAP
Produced from original
manuscript drawings. Infor-
mation shown as of date of
photography.

SCALE 1:24 000
1000 0 1000 2000 3000 4000 5000 6000 7000 8000 9000 10 000
1 000 0 1000 2000 3000 4000 5000 6000 7000 8000 9000 10 000
CONTOUR INTERVAL 5 FEET
CONTROL ELEVATIONS SHOWN TO THE NEAREST 0.1 FOOT
OTHER ELEVATIONS SHOWN TO THE NEAREST FOOT
To convert feet to meters multiply by 0.3048
To convert meters to feet multiply by 3.2808
THIS MAP COMPLIES WITH NATIONAL MAP ACCURACY STANDARDS
FOR SALE BY U.S. GEOLOGICAL SURVEY, DENVER, COLORADO 80225, OR RESTON, VIRGINIA 22092
AND THE ARKANSAS GEOLOGICAL COMMISSION, LITTLE ROCK, ARKANSAS 72204

1	2	3	Palatine
			Havens
			Danahy
4		5	Moro
			Soulan
			Aubrey
			Rondo
6	7	8	La Grange

ADJOINING 7.5 QUADRANGLE NAMES

ROAD LEGEND
Improved Road
Unimproved Road
Trail
Interstate Route U.S. Route State Route

MARIANNA, ARKANSAS
PROVISIONAL EDITION 1984
MINOR REVISION 1992
34090-G7-TF-024

A
15/705410/3850400
B
15/705390/3849660
C
15/704920/3850015

Marianna Commercial Historic District
Marianna, Arkansas
A 15/705410/3850400
B 15/705390/3849660
C 15/704920/3850015



The Department of Arkansas Heritage

**WE LOVE TO TELL
THE STORY.**

Mike Huckabee, Governor
Cathie Matthews, Director

Arkansas Arts Council

Arkansas Natural Heritage
Commission

Arkansas Territorial Restoration

Delta Cultural Center

Old State House Museum



Arkansas Historic Preservation Program

1500 Tower Building

323 Center Street

Little Rock, AR 72201

(501)324-9880

fax: (501)324-9184

tdd: (501)324-9811

e-mail:

info@arkansaspreservation.org

website:

www.arkansaspreservation.org

November 9, 2000

Carol D. Shull
Chief of Registration
United State Department of the Interior
National Register of Historic Places
National Park Service
800 North Capitol Street, Suite 250
Washington, D.C. 20002

RE: Marianna Commercial Historic District – Marianna, Lee County

Dear Carol:

We are enclosing for your review the nomination of the above-referenced property. The Arkansas Historic Preservation Program has complied with all applicable nominating procedures and notification requirements in the nomination process.

Thank you for your consideration in this matter.

Sincerely,

Cathie Matthews
State Historic Preservation Officer

CM:kms

Enclosures

An Equal Opportunity Employer





The Department of Arkansas Heritage

**WE LOVE TO TELL
THE STORY.**

Mike Huckabee, Governor
Cathie Matthews, Director

Arkansas Arts Council

Arkansas Natural Heritage
Commission

Arkansas Territorial Restoration

Delta Cultural Center

Old State House Museum



Arkansas Historic Preservation Program

1500 Tower Building
323 Center Street
Little Rock, AR 72201
(501)324-9880
fax: (501)324-9184
tdd: (501)324-9811

e-mail:
info@arkansaspreservation.org
website:
www.arkansaspreservation.org

An Equal Opportunity Employer



January 4, 2001

John S. Sorenson
Program Manager
Historic Preservation
U.S. Postal Service Facilities
4301 Wilson Blvd., Ste. 300
Arlington, VA 22203-1861

RE: The Post Office in Marianna

Dear Mr. Sorenson:

In September the Arkansas State Review Board approved the nomination of the Marianna Commercial Historic District to the National Register of Historic Places. The Post Office in Marianna lies within the boundaries of this proposed district.

If you have any questions or comments about the inclusion of this building within the historic district, please fax them to Sarah Pope at the National Register Office by 8 January 2001. Her fax number is (202) 343-1244. Thank you for your assistance in this matter.

Sincerely,

Ken Gruenwald,
Director

KG:kmo

Cc: Sarah Pope, National Register Reader