



TRUST HOUSE

PALACE

2 ADULT FILMS
MUST BE 21 DROVEN

THE DEN CAFE

Scrubbing **CLEANERS**

CAUTION
LEFT LANE
MUST
TURN LEFT

ARMY * NAVY

EB-LENS

ARMY * NAVY

EB-LENS
ARMY * NAVY

ONE WAY

**DO NOT
ENTER**

New Britain Opera House, New Britain,
CT. Photographer: T. Robins Brown

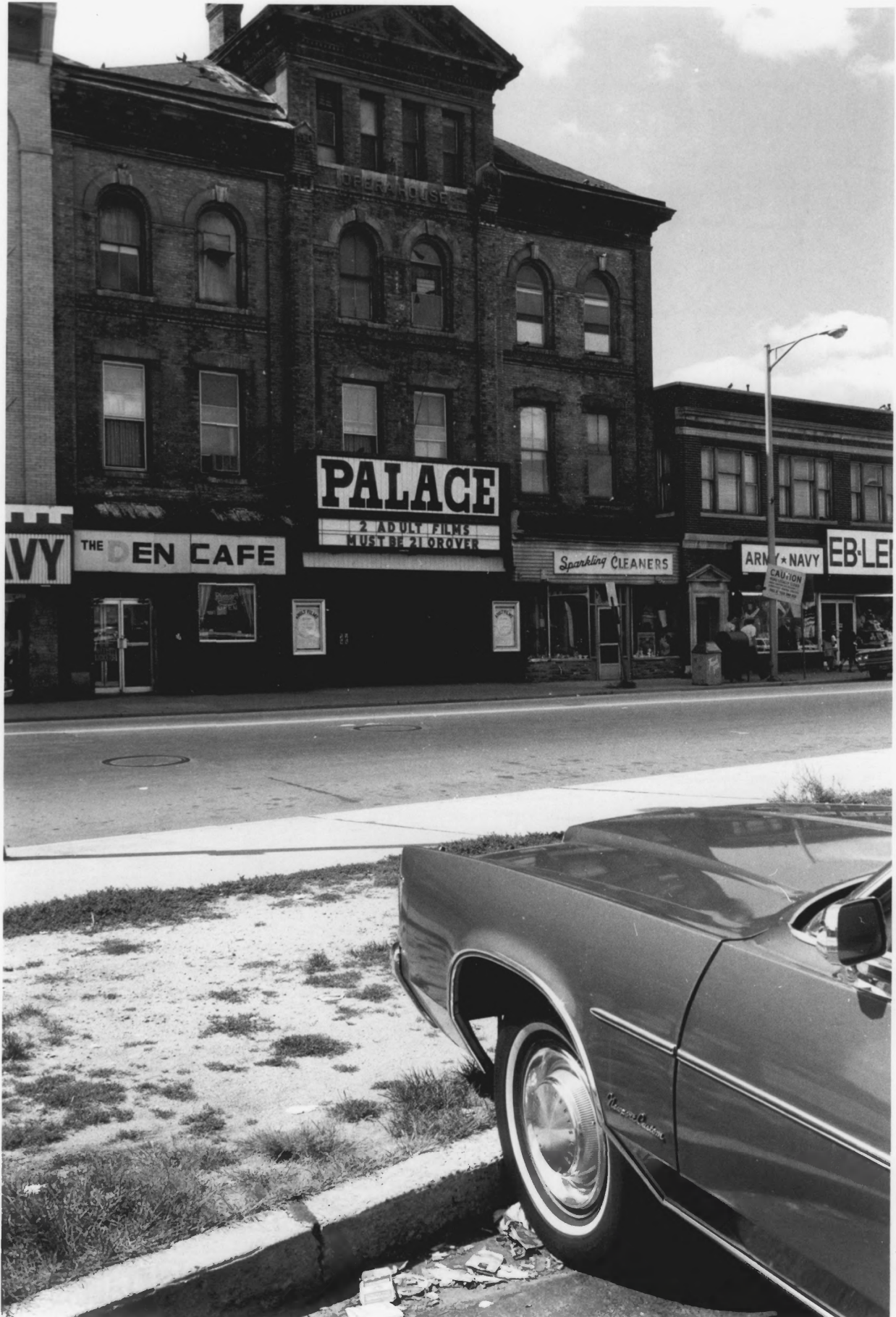
6-1-76 Neg filed: Ct. Historical
Commission, Hartford, CT.

View looking SW showing setting of
building and its east and north sides.
Photograph # 1 of 3

Hartford County

JAN 18 1977

DCE OCT 7 1977



PALACE

2 ADULT FILMS
MUST BE 21 OR OVER

THE DEN CAFE

Sparkling CLEANERS

ARMY * NAVY

EB-LE

CAUTION

Mustang

New Britain Opera House, New Britain,
CT.

Photographer: Kieran Quinn 8-18-76

Neg. filed: Ct. Historical Commission
Hartford, Ct.

View looking NW showing main (E)
facade.

Photograph # 2 of 2

JAN 18 1977

Hartford County

Doc OCT 7 1977



PALACE
THEATRE

WASH CAPS

New Britain Opera House JAN 18 1977

New Britain, CT.

Photographer: Kieran Quinn 8-18-76

Neg. filed: Ct. Historical Commission
Hartford, CT.

View looking N showing S side.

Photograph # 3023

Doc OCT 7 1977

Hartford County