



Historic Resources of Batesburg-Leesville
Lexington County, South Carolina
Suzanne Pickens, Fall 1979
Central Midlands Regional Planning Council
Columbia, South Carolina
Batesburg Commercial Historic District
Isaac Edwards's General Store (3)

Photo #1



1908

Historic Resources of Batesburg-Leesville
Lexington County, South Carolina
Suzanne Pickens, Fall 1979
Central Midlands Regional Planning Council
Columbia, South Carolina
Batesburg Commercial Historic District
Isaac Edwards, Undertaking (B-4)

Photo #2



Historic Resources of Batesburg-Leesville
Lexington County, South Carolina
Suzanne Pickens, Fall 1979
Central Midlands Regional Planning Council
Columbia, South Carolina
Batesburg Commercial Historic District
Giresi's Interiors (B-14)
Photo #3



5-10-25c DODD'S 5-10-25c

GREEN ISLAND CAFE

GREEN ISLAND CAFE
BIRTHDAY



Historic Resources of Batesburg-Leesville
Lexington County, South Carolina
Suzanne Pickens, Fall 1979
Central Midlands Regional Planning Council
Columbia, South Carolina
Batesburg Commercial Historic District
Dodd's (B-15)

Photo #4



Historic Resources of Batesburg-Leesville
Lexington County, South Carolina
Suzanne Pickens, Fall 1979
Central Midlands Regional Planning Council
Columbia, South Carolina
Batesburg Commercial District
Roof's Hardware/Trowell Records (B-19)
Photo #5



Historic Resources of Batesburg-Leesville
Lexington County, South Carolina
Suzanne Pickens, Fall 1979
Central Midlands Regional Planning Council
Columbia, South Carolina
Batesburg Commercial Historic District
Bank of Western Carolina (B-20)
Photo #6

HIGHLANDER OUTLET *50% off*



Historic Resources of Batesburg-Leesville
Lexington County, South Carolina

Suzanne Pickens, Fall 1979

Central Midlands Regional Planning Council
Columbia, South Carolina

Batesburg Commercial Historic District
Highlander Outlet (B-27)

Photo #7



RESTAURANT

RESTAURANT

OPEN

Bud

Historic Resources of Batesburg-Leesville
Lexington County, South Carolina
Suzanne Pickens, Fall 1979
Central Midlands Regional Planning Council
Columbia, South Carolina
Batesburg Commercial Historic District
Old First National Bank (B-34)

Photo #8



ALTMAN'S AUTO
PARTS

ALTMAN'S AUTO
PARTS

ALTMAN'S AUTO
PARTS

ALTMAN'S AUTO
PARTS



Historic Resources of Batesburg-Leesville
Lexington County, South Carolina
Suzanne Pickens, Fall 1979
Central Midlands Regional Planning Council
Columbia, South Carolina
Batesburg Commercial Historic District
Altman's Auto Parts (B-38)
Photo #9

CARRIAGES



M. L. GATO
GENERAL MERCHANDISE



OPEN

GROCERY
HOT
PEANUTS



Historic Resources of Batesburg-Leesville
Lexington County, South Carolina
Suzanne Pickens, Fall 1979
Central Midlands Regional Planning Council
Columbia, South Carolina
Batesburg Commercial Historic District
J.L. Cato Grocery (B-39)
Photo #10

Owen Drug Co.

Rx PRESCRIPTIONS Rx

FREE FILM



Historic Resources of Batesburg-Leesville
Lexington County, South Carolina
Suzanne Pickens, Fall 1979
Central Midlands Regional Planning Council
Columbia, South Carolina
Batesburg Commercial Historic District
Owens Drug Company (B-40)
Photo #11



WALKER PARK

1006

Maivo



Historic Resources of Batesburg-Leesville
Lexington County, South Carolina
Suzanne Pickens, Fall 1979
Central Midlands Regional Planning Council
Columbia, South Carolina
Batesburg Commercial Historic District
U.X. Gunter General Merchandise (B-1)

Photo #12



AMERICAN
CRYSTAL

Frigido

Historic Resources of Batesburg-Leesville
Lexington County, South Carolina
Suzanne Pickens, Fall 1979
Central Midlands Regional Planning Council
Columbia, South Carolina
Batesburg Commercial Historic District
Old Batesburg City Hall (B-2)
Photo #13



Historic Resources of Batesburg-Leesville
Lexington County, South Carolina
Suzanne Pickens, Fall 1979
Central Midlands Regional Planning Council
Columbia, South Carolina
Batesburg Commercial Historic District
Old Telephone Company (B-7)
Photo #14



SWIN & SUN MFG. CO.
BATESBURG, S.C.

Historic Resources of Batesburg-Leesville
Lexington County, South Carolina
Suzanne Pickens, Fall 1979
Central Midlands Regional Planning Council
Columbia, South Carolina
Batesburg Commercial Historic District
Swim & Sun Manufacturing Company (B-8)

Photo #15



Historic Resources of Batesburg-Leesville
Lexington County, South Carolina

Suzanne Pickens, Fall 1979

Central Midlands Regional Planning Council
Columbia, South Carolina

Batesburg Commercial Historic District
M. Howard Butcher Shop (B-9)

Photo #16

1901

SHEALY FURNITURE CO.



Historic Resources of Batesburg-Leesville
Lexington County, South Carolina

Suzanne Pickens, Fall 1979

Central Midlands Regional Planning Council
Columbia, South Carolina

Batesburg Commercial Historic District

Shealy Furniture (B-10)

Photo #17



Historic Resources of Batesburg-Leesville
Lexington County, South Carolina
Suzanne Pickens, Fall 1979
Central Midlands Regional Planning Council
Columbia, South Carolina
Batesburg Commercial Historic District
Village Aire (B-11)
Photo #18

Belk



Historic Resources of Batesburg-Leesville
Lexington County, South Carolina
Suzanne Pickens, Fall 1979
Central Midlands Regional Planning Council
Columbia, South Carolina
Batesburg Commercial Historic District
Belk (B-12)

Photo #19



ELECTRONICS CORP.
MEASUREMENT DIVISION

OWNED BY
WATERBURY
SANITATION
DEPT

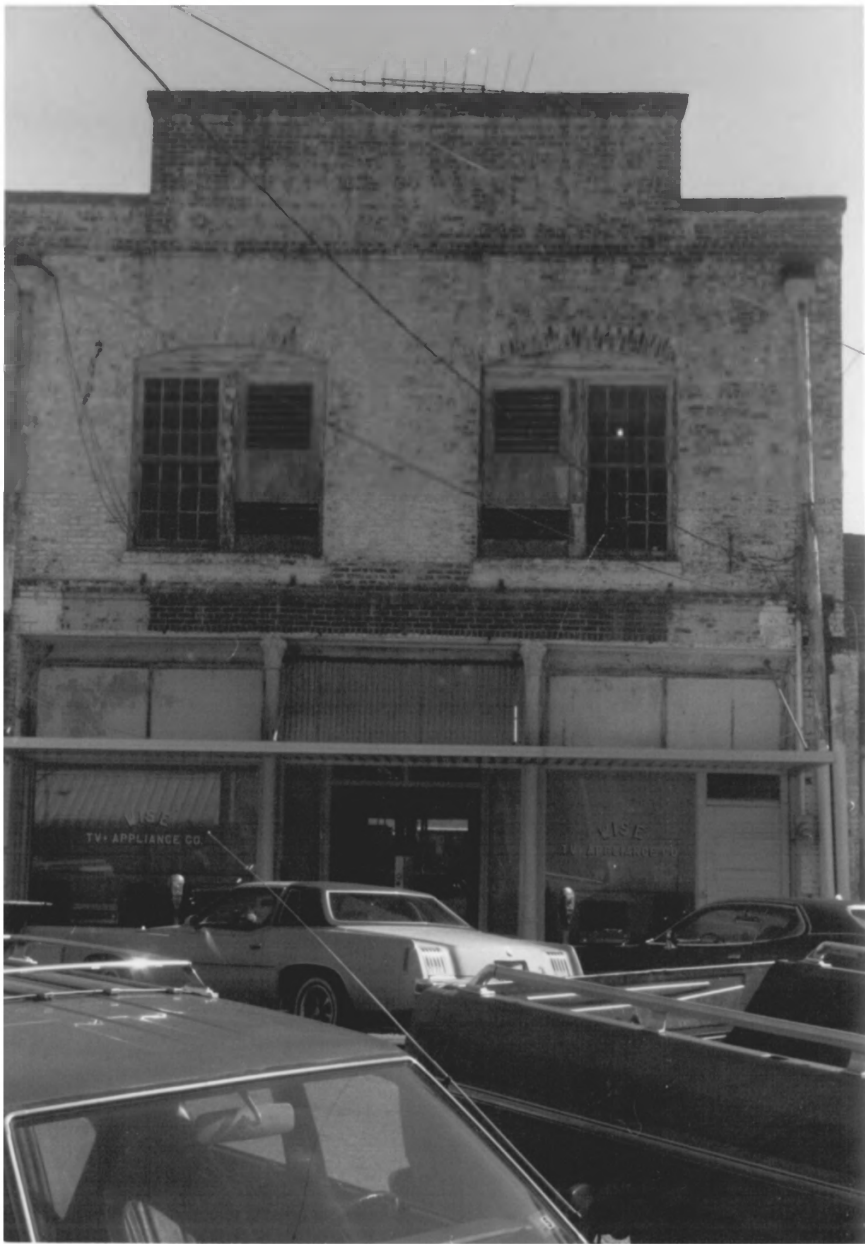
Historic Resources of Batesburg-Leesville
Lexington County, South Carolina
John Wells, December 1981
S.C. Department of Archives & History
Columbia, South Carolina
Automated Industrial Electronics (B-16)
Photo # 20



Bakery
& Pastry Shop

Historic Resources of Batesburg-Leesville
Lexington County, South Carolina
Suzanne Pickens, Fall 1979
Central Midlands Regional Planning Council
Columbia, South Carolina
Batesburg Commercial Historic District
Marvin Aull Fashion/Batesburg Fabric (B-17)

Photo #21



Historic Resources of Batesburg-Leesville
Lexington County, South Carolina
Suzanne Pickens, Fall 1979
Central Midlands Regional Planning Council
Columbia, South Carolina
Batesburg Commercial Historic District
Wise T.V. & Appliance Store (B-18)
Photo #22



Historic Resources of Batesburg-Leesville
Lexington County, South Carolina
Suzanne Pickens, Fall 1979
Central Midlands Regional Planning Council
Columbia, South Carolina
Batesburg Commercial Historic District
Fair Drug Company (B-22)
Photo #23

RAY..
ES
NTS!



Historic Resources of Batesburg-Leesville
Lexington County, South Carolina
Suzanne Pickens, Fall 1979
Central Midlands Regional Planning Council
Columbia, South Carolina
Batesburg Commercial Historic District
Fox's Denim Den (B-23)

Photo #24



HIGHLANDER OUTLET

Margee's

Historic Resources of Batesburg-Leesville
Lexington County, South Carolina
Suzanne Pickens, Fall 1979
Central Midlands Regional Planning Council
Columbia, South Carolina
Batesburg Commercial Historic District
Margee's (B-28)

Photo #25



SALE

SHORTS & KNIT TOPS
\$5 - \$10 - \$12

Jewelry

Historic Resources of Batesburg-Leesville
Lexington County, South Carolina
Suzanne Pickens, Fall 1979
Central Midlands Regional Planning Council
Columbia, South Carolina
Batesburg Commercial Historic District
Cato's (B-29)

Photo #26

VOGUE BEAUTY SALON

VOGUE
BEAUTY SALON



Historic Resources of Batesburg-Leesville
Lexington County, South Carolina
Suzanne Pickens, Fall 1979
Central Midlands Regional Planning Council
Columbia, South Carolina
Batesburg Commercial Historic District
Collins Jewelry/Vogue Beauty Salon (B-30)

Photo #27

SALON


JEWELRY

A.B. MILLER
OPTOMETRIST

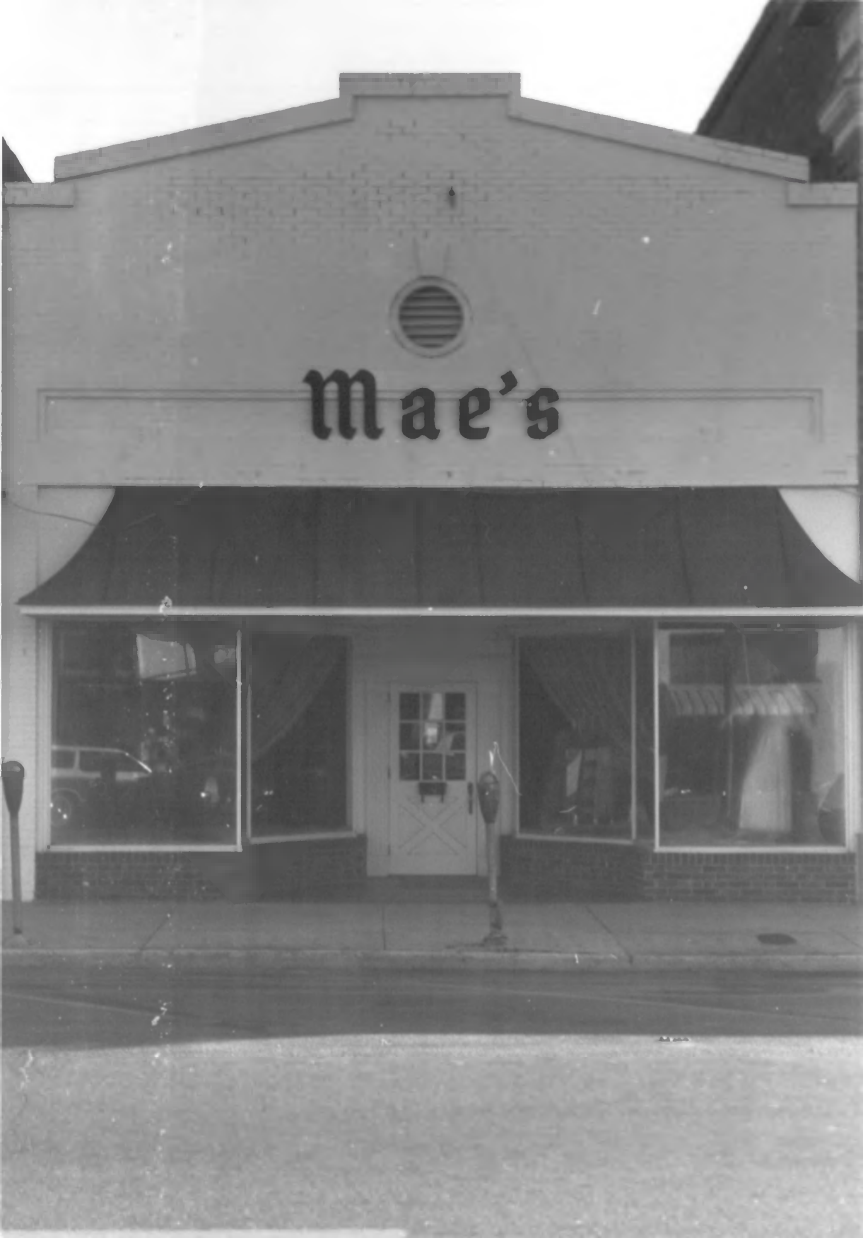
Kennedy's



Historic Resources of Batesburg-Leesville
Lexington County, South Carolina
Suzanne Pickens, Fall 1979
Central Midlands Regional Planning Council
Columbia, South Carolina
Batesburg Commercial Historic District
Rollins Optometry/Batesburg Jewelry (B-31)
Photo #28



Mae's

A black and white photograph of a storefront for a business named "Mae's". The building has a light-colored facade with a decorative pediment at the top. In the center of the pediment is a circular vent with horizontal slats. Below the vent, the name "Mae's" is written in a large, bold, serif font. A dark awning extends across the front of the building, covering a central door and two large windows on either side. The door is white with a small window and a decorative X-shaped pattern. The windows display various items, including what appears to be a dress in the right window. A parking meter is visible on the sidewalk in front of the door. The foreground shows a paved street and a sidewalk.

Historic Resources of Batesburg-Leesville
Lexington County, South Carolina

Suzanne Pickens, Fall 1979

Central Midlands Regional Planning Council
Columbia, South Carolina

Batesburg Commercial Historic District

Mae's Dress Shop (B-33)

Photo #29



Historic Resources of Batesburg-Leesville
Lexington County, South Carolina
Suzanne Pickens, Fall 1979
Central Midlands Regional Planning Council
Columbia, South Carolina
Batesburg Commercial Historic District
M.E. Rutland Building (B-36)

Photo #30

RBNICHOLS
WHOLESALE
GROCER



Historic Resources of Batesburg-Leesville
Lexington County, South Carolina
Suzanne Pickens, Fall 1979
Central Midlands Regional Planning Council
Columbia, South Carolina
Batesburg Commercial Historic District
R.B. Nichols, Wholesale Grocer (B-37)

Photo #31



FULMER HARDWARE CO.



Historic Resources of Batesburg-Leesville
Lexington County, South Carolina
Suzanne Pickens, Fall 1979
Central Midlands Regional Planning Council
Columbia, South Carolina
Batesburg Commercial Historic District
Fulmer Hardware (B-5)
Photo #32



Historic Resources of Batesburg-Leesville
Lexington County, South Carolina
Suzanne Pickens, Fall 1979
Central Midlands Regional Planning Council
Columbia, South Carolina
Batesburg Commercial Historic District
Animal World/Globe Finance (B-6)
Photo #33



Historic Resources of Batesburg-Leesville
Lexington County, South Carolina
Suzanne Pickens, Fall 1979
Central Midlands Regional Planning Council
Columbia, South Carolina
Batesburg Commercial Historic District
Moore's Department Store (B-13)
Photo #34



City
SHOE SHOP

NR 355

License plate: [unreadable]

License plate: [unreadable]

Historic Resources of Batesburg-Leesville
Lexington County, South Carolina
Suzanne Pickens, Fall, 1979
Central Midlands Regional Planning Council
Columbia, South Carolina
Batesburg Commercial Historic District
City Shoe Shop (B-21)

Photo #35



JOHN'S
JEWELRY

Historic Resources of Batesburg-Leesville
Lexington County, South Carolina
Suzanne Pickens, Fall 1979
Central Midlands Regional Planning Council
Columbia, South Carolina
Batesburg Commercial Historic District
Jones Jewelry (B-24)
Photo #36

A black and white photograph of a building's exterior. The upper portion of the building features a dark, vertically-ribbed facade. The name "GARBER'S" is prominently displayed in large, bold, black capital letters across the center of this section. Below the name, there are several dark, vertical rectangular panels, possibly windows or decorative elements. The lower portion of the building is a dark, solid-colored section with a row of large windows. The windows are mostly dark, but the central entrance area shows some interior details, including what appears to be a counter or display case. The overall image has a high-contrast, grainy quality typical of older black and white photography.

GARBER'S

Historic Resources of Batesburg-Leesville
Lexington County, South Carolina
Suzanne Pickens, Fall 1979
Central Midlands Regional Planning Council
Columbia, South Carolina
Batesburg Commercial Historic District
Garber's Department Store (B-25)

Photo #37

Barb's
BOUTIQUE

HIGHLAN

Historic Resources of Batesburg-Leesville
Lexington County, South Carolina

Suzanne Pickens, Fall 1979

Central Midlands Regional Planning Council
Columbia, South Carolina

Batesburg Commercial Historic District

Barb's Boutique (B-26)

Photo #38

RY

Kennedy's

Apes

Score



Historic Resources of Batesburg-Leesville
Lexington County, South Carolina
Suzanne Pickens, Fall 1979
Central Midlands Regional Planning Council
Columbia, South Carolina
Batesburg Commercial Historic District
Kennedy's Men's Store (B-32)
Photo #39



16

Historic Resources of Batesburg-Leesville
Lexington County, South Carolina

Suzanne Pickens, Fall 1979

Central Midlands Regional Planning Council
Columbia, South Carolina

Batesburg Commercial Historic District
Fox's Liquor Store (B-35)

Photo #40



Historic Resources of Batesburg-Leesville
Lexington County, South Carolina

Nancy Fox, December 1979

Central Midlands Regional Planning Council
Columbia, South Carolina

Batesburg Commercial Historic District
Oak Street, looking north

Photo #41



Historic Resources of Batesburg-Leesville
Lexington County, South Carolina
Nancy Fox, December 1979
Central Midlands Regional Planning Council
Columbia, South Carolina
Batesburg Commercial Historic District
Oak Street, looking south

Photo #42