

United States Department of the Interior
National Park Service

National Register of Historic Places
Continuation Sheet

Section number _____ Page _____

SUPPLEMENTARY LISTING RECORD

NRIS Reference Number: 88001614 Date Listed: 3/31/89

<u>W.W. Midgley Bridge</u>	<u>Coconino</u>	<u>Arizona</u>
Property Name	County	State

Vehicular Bridges in Arizona MPS
Multiple Name

This property is listed in the National Register of Historic Places in accordance with the attached nomination documentation subject to the following exceptions, exclusions, or amendments, notwithstanding the National Park Service certification included in the nomination documentation.

for Druce J. Noble, Jr.
Signature of the Keeper

3/31/89
Date of Action

=====
Amended Items in Nomination:

The period of significance for this property should simply be listed as 1939, rather than 1939-present as the period is listed in the nomination cover form. This should not be considered a substantive SLR since previous National Register return comments neglected to advise that the period of significance be amended.

DISTRIBUTION:

- National Register property file
- Nominating Authority (without nomination attachment)

HABS/HAER INVENTORY

See "HABS/HAER Inventory Guidelines" before filling out this card.

1. NAME(S) OF STRUCTURE W.W. Midgley Bridge (Wilson Canyon Bridge)	ADOT: 0232	3. DATE(S) OF CONSTRUCTION 1938-39
2. LOCATION U.S. Highway 89 Alternate over the Wilson Canyon; milepost:375.66 1.5 miles northeast of Sedona; NW1/4 S4 T17N R6E Coconino County, Arizona	4. USE (ORIGINAL/CURRENT) highway bridge / highway bridge 5. RATING NRHP eligible: local significance	

6. CONDITION

good; sufficiency rating: 64.9 owner: Arizona Department of Transportation

7. DESCRIPTION

span number : 1 superstructure: riveted steel, two-hinge spandrel-braced deck arch
 span length : 240.0' substructure : concrete abutments and arch pedestal w/ stone masonry wingwalls
 total length: 374.8' floor/decking : concrete deck over steel stringers
 roadway wdt.: 24.0' other features: lower chord: 2 built-up channels w/ double webbing; upper chord: 2 channels w/ double webbing; post: wide flange / 2 channels w/ double webbing; diagonal: wide flange / 2 channels w/ batten plates; strut and lateral bracing: 2 angles w/ webbing; floor beam: I beam; steel Arco guardrails

8. HISTORICAL DATA

In 1930, the U.S. Bureau of Public Roads undertook an extensive upgrading of the Oak Creek Highway between Sedona and Flagstaff in Coconino County. Termed Arizona Forest Project 7, the construction was divided into several sections and let under a series of contracts during the early 1930s. The final link to complete the new highway was the erection of a major bridge over Wilson Canyon near Sedona. For this crossing, BPR engineers designed this medium-span steel deck arch which resembled a scaled-down version of the immense Navajo Bridge (1929) over the Grand Canyon. Early in 1938, the BPR contracted with the Lewis Brothers under AFP 7-B(1) to pour the foundations and erect the arch. The Phoenix-based contractors began the excavation in the canyon walls for the pier pedestals on March 24, 1938, and pushed the work throughout the summer under the supervision of BPR Resident Engineer V.G. Watson. They completed the structure on October 31. Dedicated in honor of W.W. Midgley, the Midgley Bridge has since carried traffic on U.S. 89 Alternate in an unaltered condition.

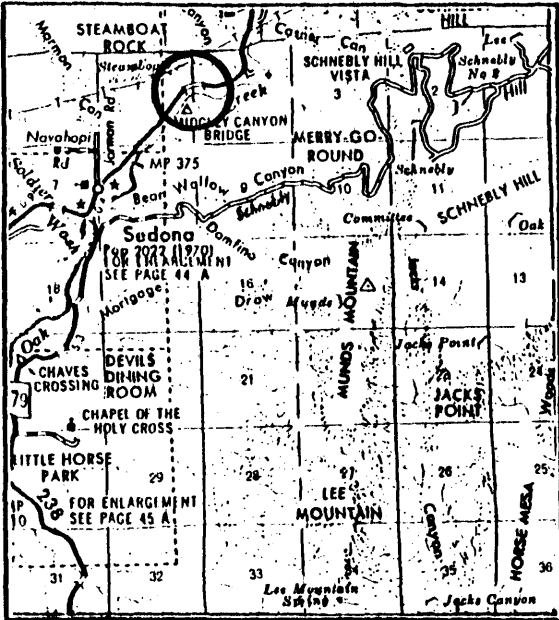
9. SIGNIFICANCE

Two spandrel-braced steel arches carry vehicular traffic in Arizona: the Midgely and the Navajo bridges. Although it suffers in comparison with the nationally significant Navajo Bridge, the Midgely Bridge is technologically significant as a well-preserved and picturesquely sited example of what must be considered an esoteric and dramatic structural type. The bridge is historically noteworthy as the final link completed on the Oak Creek Highway between Sedona and Flagstaff, a beautiful and popular secondary route in central Arizona.

10. NAME(S) OF STRUCTURE

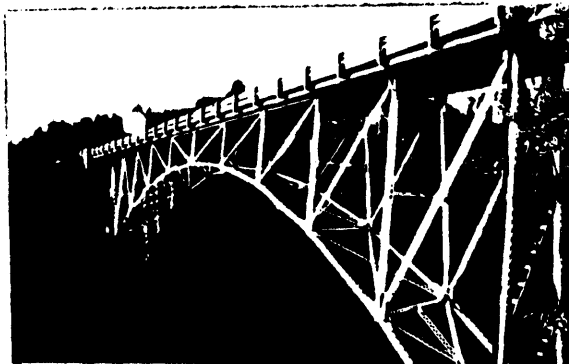
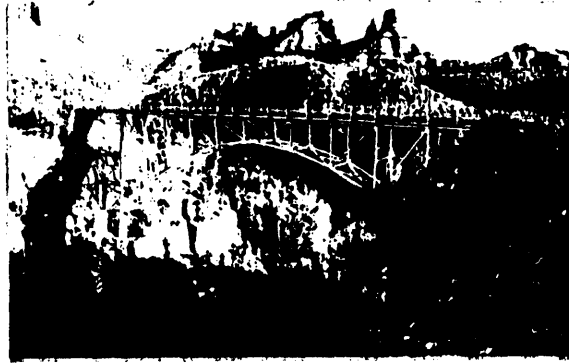
W.W. Midgley Bridge (Wilson Canyon Bridge)

11. PHOTOS (W/ FILM ROLL & FRAME NO.) AND SKETCH MAP OF LOCATION



LOCATION MAP

TAKEN FROM DEPARTMENT OF TRANSPORTATION
GENERAL HIGHWAY MAP



Bridge Record, Arizona State Highway System: 0232; Structures Section, Arizona Department of Transportation, Phoenix AZ
Arizona Highways: 6:1938:29; 8:1938:50; 1:1939:37.
Field inspection by Clayton Fraser, 6 October 1986.

12. SOURCES

13. INVENTORIED BY:

Clayton B. Fraser

AFFILIATION

Fraserdesign Loveland Colorado

DATE

1 April 1987