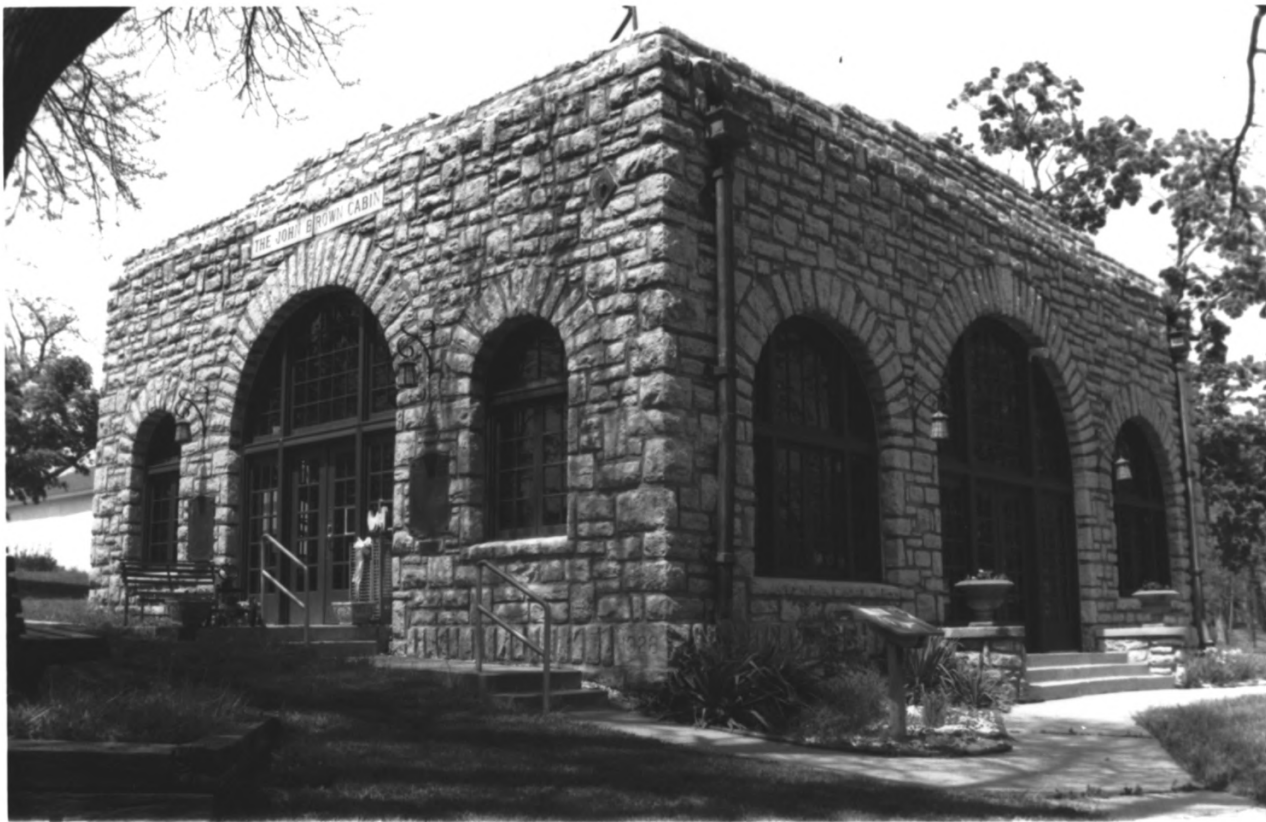


THE JOHN BROWN CABIN



John Brown Cabin

Isawatawe, Mearns City, KS.

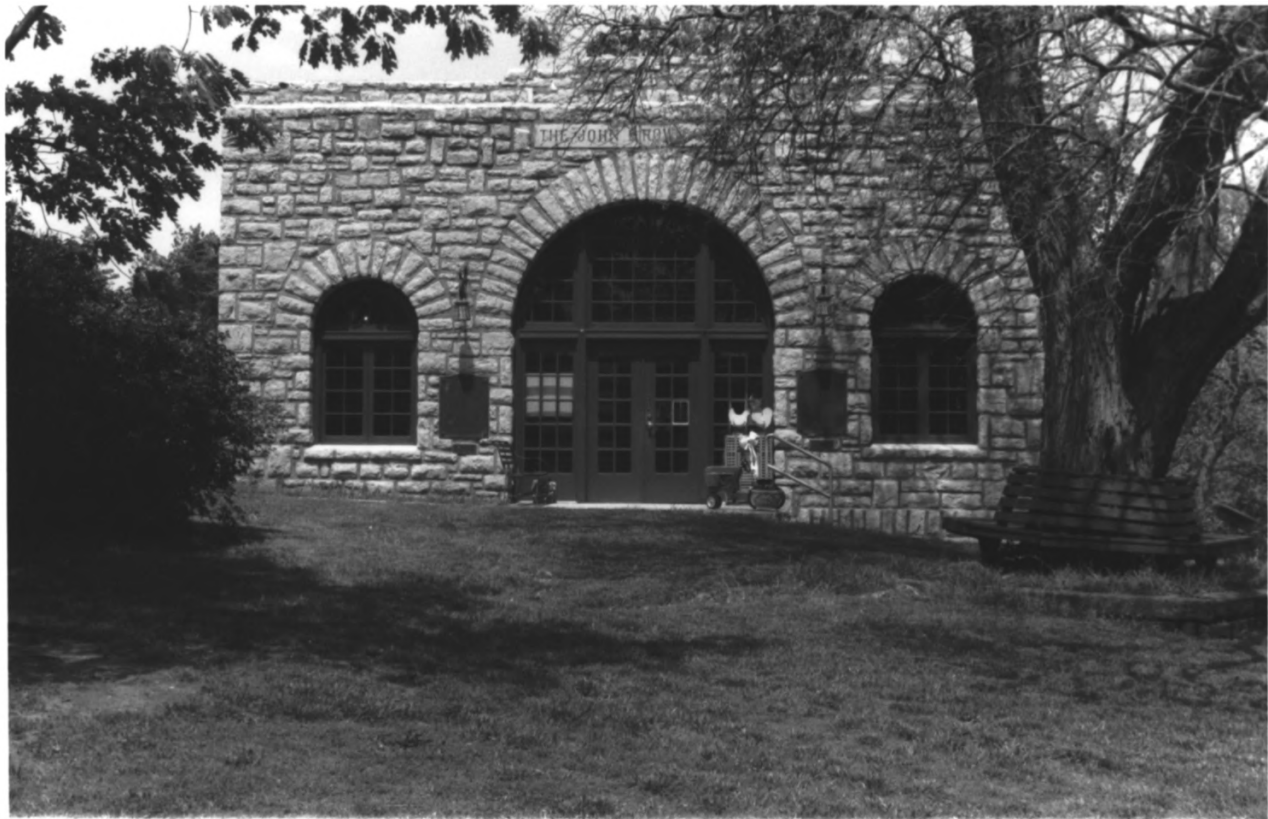
M. Hayden Kram

April 2004

KS HS

North east view south facade, west elevation

116



John Brown Cabin

Senatobia, Miami Co., KS.

M. Agard - known

April 2004

KSHS

North view, South facade

216



John Brown Cabin

Oswatimie, Miami Co., KS.

M. Hegdum. Kross

April 2004

KSHS

North view inside pavilion, west wall

A cabin and pavilion

416



John Brown Cabin

Oswatimie, Miami, Cty, KS.

M. Hayden. Home

April 2004

KSAS

East view, main room

5/6



John Brown Cabin

Osawatomie, Miami Ctn, Ks.

M. Heyden Kross

April 2004

KSAS

Northwest view, left

6/6



1894 view of the John Brown (Samuel Adair)
Cabin in its original location.

Orig. photographer — L. F. Wentworth, M.D.
Osawatomie, Kansas

Photo in files of Kansas State Historical Society



NATIONAL REGISTER OF HISTORIC PLACES

PROPERTY PHOTOGRAPH FORM

(Type all entries - attach to or enclose with photograph)

STATE Kansas	
COUNTY Miami	
FOR NPS USE ONLY	
ENTRY NUMBER 75-320,0020	DATE 3/24/71



SEE INSTRUCTIONS

1. NAME

COMMON: **John Brown Cabin**
AND/OR HISTORIC: **Samuel Adair Cabin**

2. LOCATION

STREET AND NUMBER:
John Brown Memorial Park
CITY OR TOWN:
Osawatomie

STATE: Kansas 66064	CODE 20	COUNTY: Miami	CODE 121
-------------------------------	-------------------	-------------------------	--------------------

3. PHOTO REFERENCE

PHOTO CREDIT: **Kansas State Historical Society Staff**
DATE OF PHOTO: **1963**
NEGATIVE FILED AT:
Kansas State Historical Society Archives

4. IDENTIFICATION

DESCRIBE VIEW, DIRECTION, ETC.
Front view from the east of the structure that shelters the John Brown Cabin.



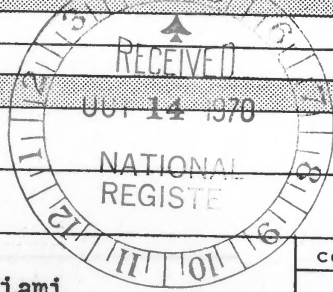
UNITED STATES DEPARTMENT OF THE INTERIOR
NATIONAL PARK SERVICE

NATIONAL REGISTER OF HISTORIC PLACES
PROPERTY PHOTOGRAPH FORM

(Type all entries - attach to or enclose with photograph)

STATE Kansas	
COUNTY Miami	
FOR NPS USE ONLY	
ENTRY NUMBER	DATE

71.3.20-2020.3/24/71



SEE INSTRUCTIONS

1. NAME			
COMMON: John Brown Cabin		AND/OR HISTORIC: Samuel Adair Cabin	
2. LOCATION			
STREET AND NUMBER: John Brown Memorial Park			
CITY OR TOWN: Osawatomie			
STATE: Kansas 66064	CODE 20	COUNTY: Miami	CODE 121
3. PHOTO REFERENCE			
PHOTO CREDIT: Kansas State Historical Society Staff			
DATE OF PHOTO: Unknown except that it was prior to 1928			
NEGATIVE FILED AT: Kansas State Historical Society Archives			
4. IDENTIFICATION			
DESCRIBE VIEW, DIRECTION, ETC. Exterior view of the front of the John Brown Cabin prior to the construction of the shelter in 1928. Copied from a post card.			