



Embassy Building No. 10/D.C. Dept. of Recreation

Headquarters

Washington, D.C.

Martha Bowers, Photographer

August 2, 1984

Negative on file at Louis Berger & Associates, Inc.

Cultural Resource Group

100 Halsted Street

East Orange, N.J. 07019

View facing south; door formerly between last 2 windows
on first floor has been filled in.

3 of 7



Embassy Building No. 10/D.C. Dept. of Recreation
Headquarters
Washington, D.C.

Martha Bowers, Photographer

August 2, 1984

Negative on file at Louis Berger & Associates, Inc.
Cultural Resource Group
100 Halsted Street
East Orange, N.J. 07019

View facing west; note iron pipe railing on north
exterior wall leading to now-filled in doorway.

4 of 7



Embassy Building No. 10/D.C. Dept. of Recreation
Headquarters
Washington, D.C.

Martha Bowers, Photographer

August 2, 1984

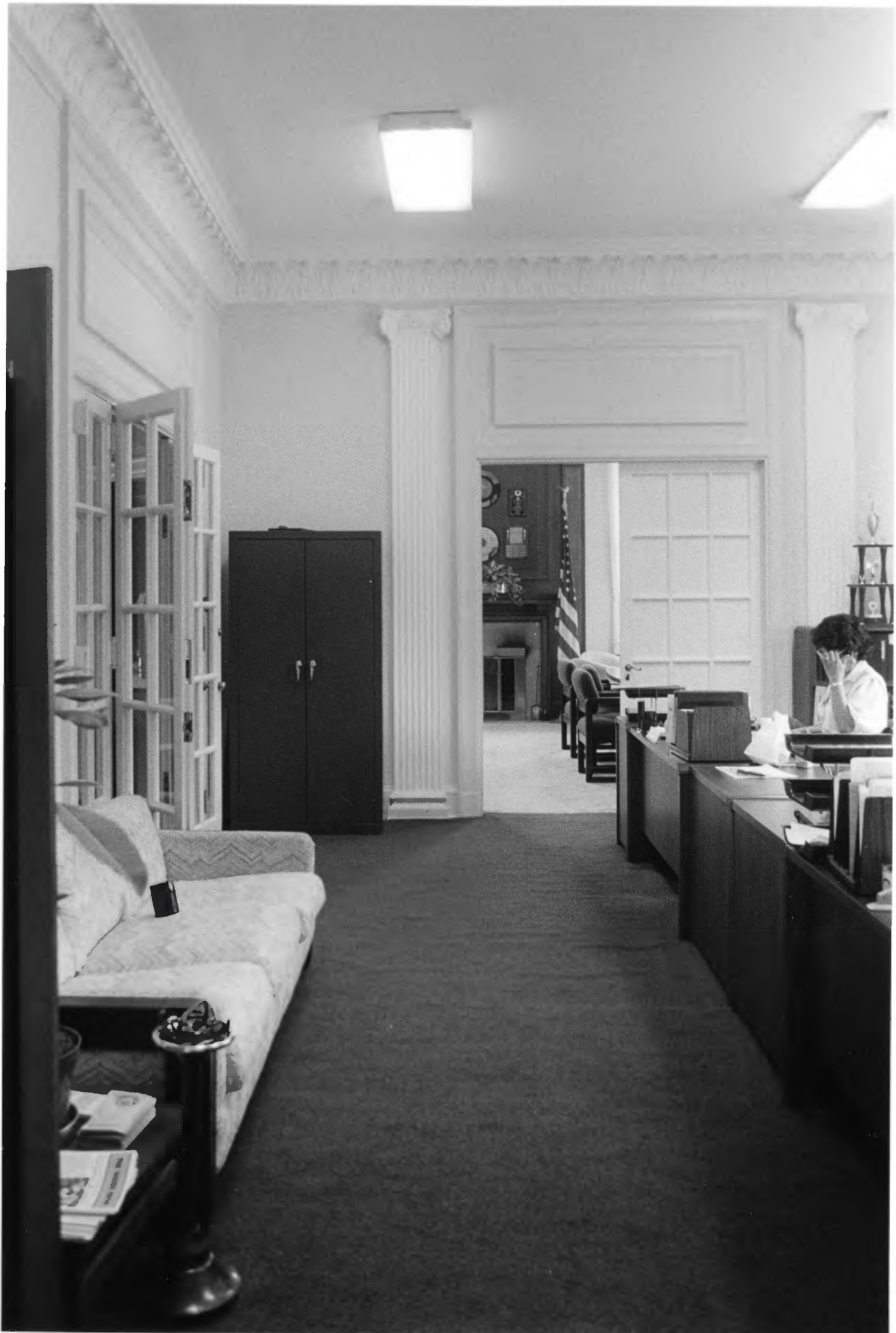
Negative on file at Louis Berger & Associates, Inc.
Cultural Resource Group
100 Halsted Street
East Orange, N.J. 07019

View facing north of office, 2nd floor, showing
decorative plaster molding and treatment of
fireplace.

6 of 7



Facade, facing northeast, D.C.
Department of Recreation
Headquarters, 3149 16th Street,
N.W., Washington, D.C., 1985



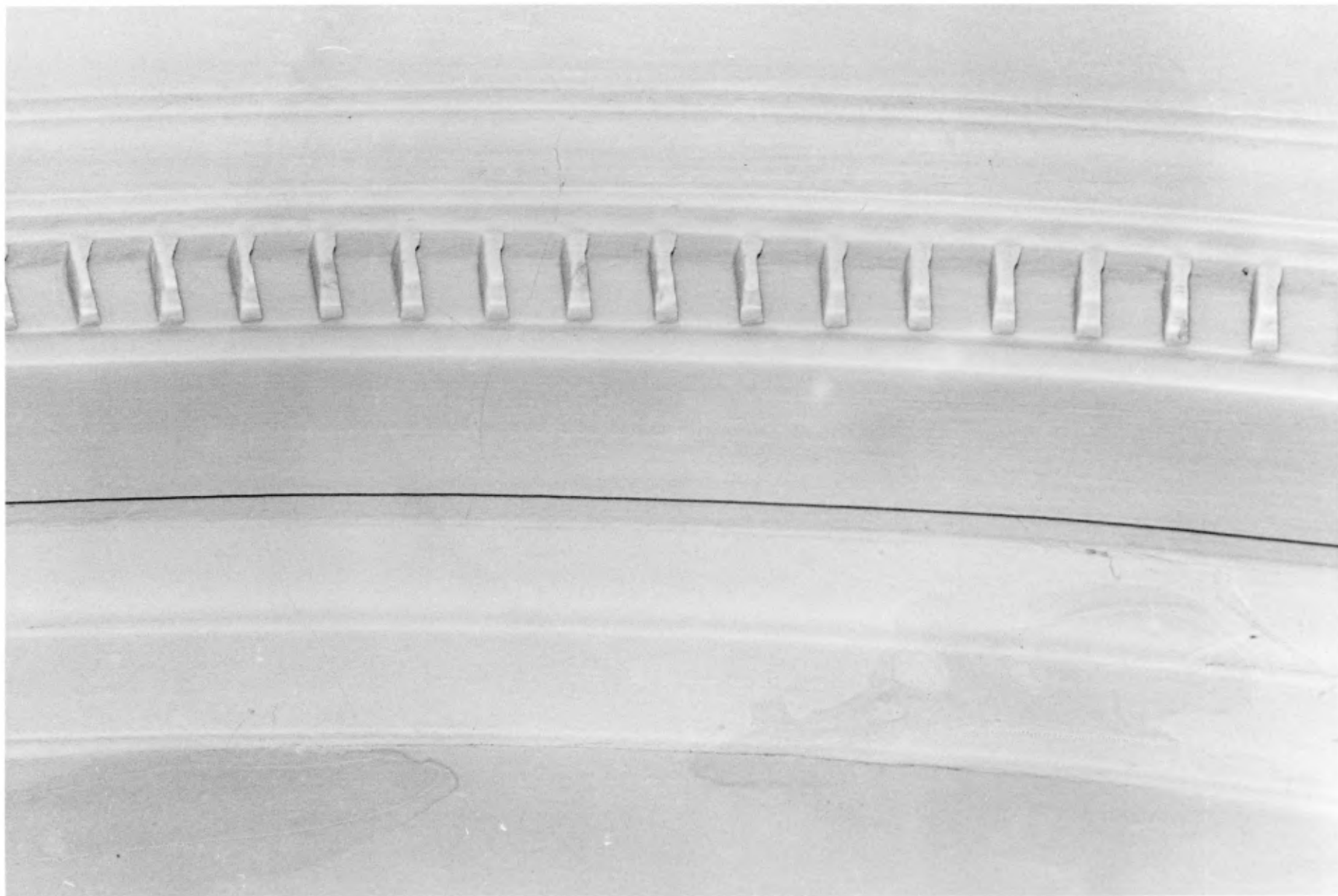
D.C. Department of Recreation
Headquarters, second floor
reception area with cornice
of acanthus leaves and ionic
fluted pilasters, 3149 16th
Street, N.W., Washington,
D.C., 1985



Decorative stair balustrade with
quatrefoil, D.C. Department of
Recreation, 3149 16th Street,
N.W. Washington, D.C., 1985



Curved entrance stairway with decorative balustrade, D.C. Department of Recreation 3149 16th Street, N.W., Washington, D.C., 1985.



Dentil Molding, Fireplace Mantel,
Front left, first floor office,
D.C. Department of Recreation
Headquarters, 3149 16th Street,
N.W., Washington, D.C., 1985



Faux coat of arms with griffins
attopped by egg and dart molding,
first floor front left office
fireplace, D.C. Department of
Recreation.



Decorative bracket with acanthus leaf and egg and dart molding, mantel with bead and reel molding, first floor front left office fireplace, D.C. Department of Recreation, 3149 16th Street, N.W., Washington, D.C., 1985.

APRIL 1985						
1	2	3	4	5	6	
7	8	9	10	11	12	13
14	15	16	17	18	19	20
21	22	23	24	25	26	27
28	29	30				

MAY 1985						
	1	2	3	4		
5	6	7	8	9	10	11
12	13	14	15	16	17	18
19	20	21	22	23	24	25
26	27	28	29	30	31	

JUNE 1985						
						1
2	3	4	5	6	7	8
9	10	11	12	13	14	15
16	17	18	19	20	21	22
23	24	25	26	27	28	29

JULY 1985						
	1	2	3	4	5	6
7	8	9	10	11	12	13
14	15	16	17	18	19	20
21	22	23	24	25	26	27
28	29	30	31			

AUGUST 1985						
				1	2	3
4	5	6	7	8	9	10
11	12	13	14	15	16	17
18	19	20	21	22	23	24
25	26	27	28	29	30	31

SEPTEMBER 1985						
1	2	3	4	5	6	7
8	9	10	11	12	13	14
15	16	17	18	19	20	21
22	23	24	25	26	27	28
29	30					



Mantelpiece, First floor, front
elevation, D.C. Department of
Recreation, 3149 16th St., N.W.
Washington, D.C., 1985.



Details of fireplace, front
left second story office,
D.C. Department of Recreation
Headquarters, 3149 16th Street,
N.W., Washington, D.C., 1985