



Empire Mine

Grass Valley, Nevada County, California

Department of Parks and Recreation

P. O. Box 2390, Sacramento, CA 95811

1976

Rowe Shaft Ore Bin

DEC 9 1977

*Bldg #8*

*#10624* OCT 20 1977



DO NOT  
FEED  
WILDLIFE

Empire Mine

Grass Valley, Nevada County, California

Department of Parks and Recreation

P. O. Box 2390, Sacramento, CA 95811

1976

Rowe Shaft Headframe

DEC 9 1977

OCT 20 1977

*Bldg # 7*

*# 20724*



Empire Mine

Grass Valley, Nevada County, California

Department of Parks and Recreation

P. O. Box 2390, Sacramento, CA 95811

1976

Empire Headframe Foundation and Hoist House

#30724

DEC 9

1977

OCT

20

1977

*Blg #2*



Empire Mine

Grass Valley, Nevada County, California

Department of Parks and Recreation

P. O. Box 2390, Sacramento, CA 95811

1925

Empire Cottage

#4024

Bldg. #55

DEC 9

1977

OCT 20 1977





Empire Mine

Grass Valley, Nevada County, California

Department of Parks and Recreation

P. O. Box 2390, Sacramento, CA 95811

1976

Empire Cottage

*Bldg # 55*

*# 5824*

*11-3*

DEC 9 1977

OCT 20 1977



Empire Mine

Grass Valley, Nevada County, California

Department of Parks and Recreation

P. O. Box 2390, Sacramento, CA 95811

1976

Empire Cottage

DEC 9 1977

*Bldg. # 55*

*#60,24*

OCT 20 1977



Empire Mine

Grass Valley, Nevada County, California

Department of Parks and Recreation

P. O. Box 2390, Sacramento, CA 95811

1976

Mine Manager's Office

DEC 9 1977

*BLDGs. # 3, 4, & 5*

*# 7024* OCT 20 1977



Empire Mine

Grass Valley, Nevada County, California

Department of Parks and Recreation

P.O. Box 2390, Sacramento, CA 95811

1976

Mine Manager's Office

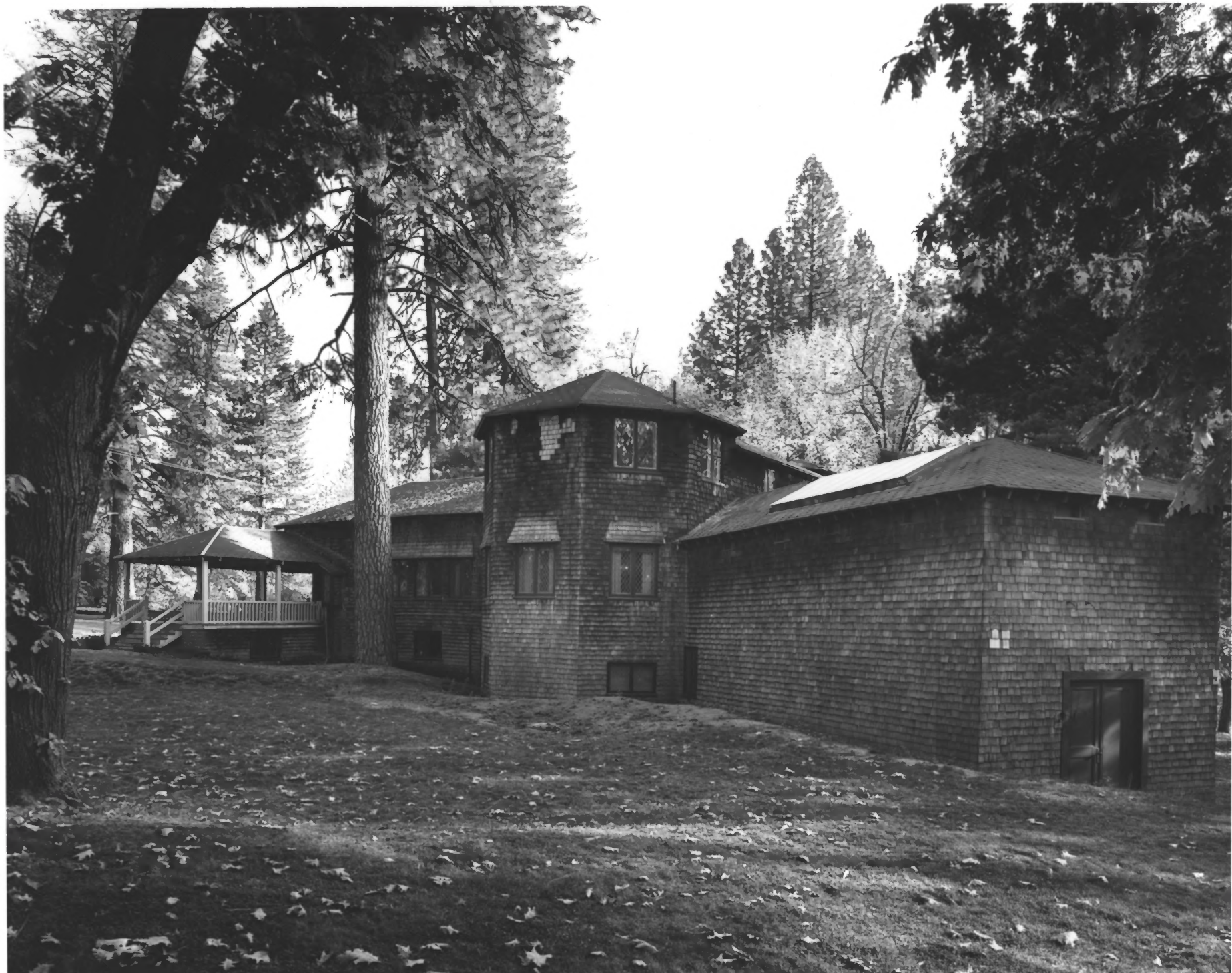
*BLDGs # 3, 4 & 5 # 80024*

OCT 20 1977

DEC 9

1977





Empire Mine

Grass Valley, Nevada County, California

Department of Parks and Recreation

P. O. Box 2390, Sacramento, CA 95811

1976

Empire Country Club

OCT 20 1977

*Bldg # 56*

*# 9 of 24*

DEC 9 1977



Empire Mine

Grass Valley, Nevada County, California

Department of Parks and Recreation

P. O. Box 2390, Sacramento, CA 95811

1976

Safety Engineer's Office and Refinery

*BLDGs # 3, 4, & 5* # 10 224 OCT 20 1977  
DEC 9 1977



Empire Mine

Grass Valley, Nevada County, California

Department of Parks and Recreation

P. O. Box 2390, Sacramento, CA 95811

1976

Engineer's Office

OCT 20 1977

*Bldg #6*

DEC 9

1977

*#110824*



Empire Mine

Grass Valley, Nevada County, California

Department of Parks and Recreation

P.O. Box 2390

Sacramento, CA 95811

1976

Warehouse No. 1

*Bldg #9*

DEC 9 1977

OCT 20 1977

*# 120024*





Empire Mine

Grass Valley, Nevada County, California

Department of Parks and Recreation

P. O. Box 2390, Sacramento, CA 95811

1976

Transformer House

*Bldg # 11*

DEC 9

1977

OCT 20 1977

# 130824



Empire Mine

Grass Valley, Nevada County, California

Department of Parks and Recreation

P. O. Box 2390, Sacramento, CA 95811

1976

Garage

OCT 20 1977

*Bldg #15*

DEC 9 1977

*#14924*



Empire Mine

Grass Valley, Nevada County, California

Department of Parks and Recreation

P. O. Box 2390, Sacramento, CA 95811

1976

Diamond Drill Core Building

*Bldg #10*

DEC 9 1977

OCT 20 1977

# 15 of 24



Empire Mine

Grass Valley, Nevada County, California

Department of Parks and Recreation

P. O. Box 2390, Sacramento, CA 95811

1976

*NO!*

DEC 9 1977

~~Diamond Drill Core Building~~ adjacent to

Engineer's Office

*Bldg #15*

*# 16 of 24*

OCT 20 1977





Empire Mine

Grass Valley, Nevada County, California

Department of Parks and Recreation

P. O. Box 2390, Sacramento, CA 95811

1976

DEC 9 1977

Greenhouse and Anderson Building

*Bldgs # 57 & 58*

*#1708* OCT 20 1977  
*24*



POSTER  
KEEP OUT

DENG  
#1

Empire Mine

Grass Valley, Nevada County, California

Department of Parks and Recreation

P. O. Box 2390, Sacramento, CA 95811

1976

Sing Residence

"O'Yung"

Bldg #60

DEC 9 1977

OCT 20 1977

#180824



Empire Mine

Grass Valley, Nevada County, California

Department of Parks and Recreation

P. O. Box 2390, Sacramento, CA 95811

1976

DEC 9 1977

Beyer Residence

*Bldg # 66*

*#19324* OCT 20 1977



Empire Mine

Grass Valley, Nevada County, California

Department of Parks and Recreation

P. O. Box 2390, Sacramento, CA 95811

1976

Boiler

DEC 9 1977

OCT 20 1977.

*Bldg # 12*

*#20724*





Empire Mine

Grass Valley, Nevada County, California

Department of Parks and Recreation

P. O. Box 2390, Sacramento, CA 95811

1976

George W. Starr House Ruins

DEC 9 1977

OCT 20 1977

*Bldg # 59*

*# 210824*



Empire Mine

Grass Valley, Nevada County, California

Department of Parks and Recreation

P. O. Box 2390, Sacramento, CA 95811

1976

Cyanide Plant Foundation

DEC 9 1977

OCT 20 1977

*Bldg #22*

*#22024*



Empire Mine

Grass Valley, Nevada County, California

Department of Parks and Recreation

P. O. Box 2390, Sacramento, CA 95811

1976

Tailings Pond Area

DEC 9 1977

OCT 20 1977

# 23924



Empire Mine

Grass Valley, Nevada County, California

Department of Parks and Recreation

Post Office Box 2390, Sacramento, CA 95811

1976

Machine Shop

*Bldg #14*

DEC 9

1977

OCT 20 1977

*#24 of 24*