



Cornersville Methodist Episcopal Church South

100 South Mulberry St.

Cornersville, Marshall County, Tennessee

Photo by: Steve Rogers

Date: November, 1981

Neg: Tennessee Historical Commission,  
Nashville, Tennessee

South and east elevations, facing northwest

1 of 9



Cornersville Methodist Episcopal Church South

100 South Mulberry St.

Cornersville, Marshall County, Tennessee

Photo by: Steve Rogers

Date: November, 1981

Neg: Tennessee Historical Commission

Nashville, Tennessee

East elevation, facing west

2 of 9



Cornersville Methodist Episcopal Church South  
100 South Mulberry St.

Cornersville, Marshall County, Tennessee

Photo by: Steve Rogers

Date: November, 1981

Neg: Tennessee Historical Commission

Nashville, Tennessee  
Double leaf doors, east (main) elevation.  
facing west

3 of 9



Cornersville Methodist Episcopal Church South  
100 South Mulberry Street  
Cornersville, Marshall County, Tennessee

Photo by: Steve Rogers

Date: November, 1981

Neg: Tennessee Historical Commission  
Nashville, Tennessee

South elevation, facing north

4 of 9





Cornersville Methodist Episcopal Church South  
100 South Mulberry Street

Cornersville, Marshall County, Tennessee

Photo by: Steve Rogers

Date: November, 1981

Neg: Tennessee Historical Commission  
Nashville, Tennessee

North and west elevations, facing southeast

5 of 9



Cornersville Methodist Episcopal ChurchSouth

100 South Mulberry Street

Cornersville, Marshall County, Tennessee

Photo by: Sarah Spencer

Date: November, 1981

Neg: Tennessee Historical Commission

Nashville, Tennessee

Interior - Sanctuary

6 of 9



Cornersville Methodist Episcopal Church South

100 South Mulberry Street

Cornersville, Marshall County, Tennessee

Photo by: Sarah Spencer

Date: November, 1981

Neg: Tennessee Historical Commission

Nashville, Tennessee

Interior - staircase

7 of 9



Cornersville Methodist Episcopal Church South  
100 South Mulberry Street

Cornersville, Marshall County, Tennessee

Photo by: Sarah Spencer

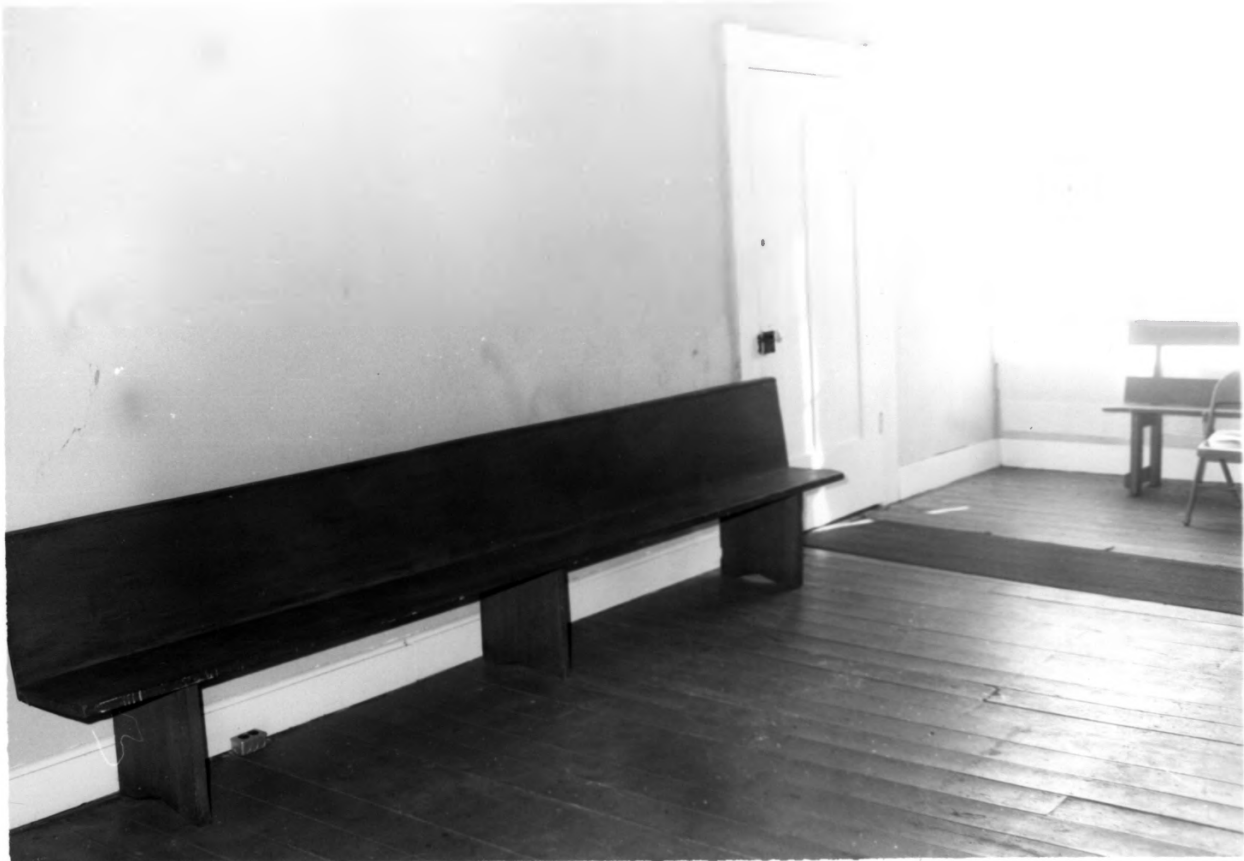
Date: November, 1981

Neg: Tennessee Historical Commission  
Nashville, Tennessee

Interior; second floor, Sunday School (rope  
in the corner rings the bell)

8 of 9





Cornersville Methodist Episcopal Church South

100 South Mulberry Street

Cornersville, Marshall County, Tennessee

Photo by: Sarah Spencer

Date: November, 1981

Neg: Tennessee Historical Commission

Nashville, Tennessee

Interior; second floor old Masonic Hall

9 of 9