

United States Department of the Interior  
National Park Service

**National Register of Historic Places  
Continuation Sheet**



Kansas Route 66 Historic District –  
North Baxter Springs  
Cherokee County, Kansas

Section numbers 2, 5, 7, 10

Page 1

**Nomination Amendment (Boundary Increase), 2016**

*Patrick Zollner*  
Patrick Zollner, Deputy SHPO

*11-21-16*

Date

**Background**

Kansas Route 66 Historic District – North Baxter Springs was listed in the National Register of Historic Places on April 14, 2015. This amendment expands the boundary to include an additional 1.1 miles of the original Route 66, beginning approximately 1/10<sup>th</sup> of a mile north of the current North Baxter Springs Historic District. This expansion also incorporates the National Register-listed Brush Creek Marsh Arch Bridge (listed March 10, 1983, KHRI #021-0000-00112) that was part of this Route 66 segment. Together with the previously listed district, these 3.2 miles are the extant remains of Route 66 between Riverton and Baxter Springs.

**Section 2. Location**

SE Beasley Rd (Old Route 66) west of US-69 Hwy

**Section 5. Number of Resources within Property**

This amendment adds **6** contributing resources (3 sites and 3 structures) plus the previously-listed Brush Creek Bridge to the six contributing resources in the original nomination. The total number of resources within the boundary of the district is **13**.

**Section 7. Narrative Description**

This boundary expansion adds 1.1 miles to the Kansas Route 66 Historic District – North Baxter Springs along what is now called SE Beasley Road west of US-69 Hwy. Prior to 2002, the 1.6-mile stretch of historic Route 66 between Riverton and the Brush Creek Bridge was a relatively straight east-west running roadway. Upon the northern approach to the Brush Creek Bridge, the road curved to the southwest before turning south and continuing on into Baxter Springs (*Figures 5 & 6*).<sup>1</sup> Between 1991 and 2002 the physical continuity of this roadway was interrupted when two major highway projects removed portions of the historic road. A reconstruction of the interchange between Route 66 and US-69 Hwy eliminated about a half of a mile between Riverton and SE 60<sup>th</sup> Road, and a realignment of SE Beasley Road removed the historic connection to and from the Brush Creek Bridge.

Because of the highway work, this portion of the route north of the existing northern boundary of the district contains three extant sections of the historic roadway within close visual and physical proximity. From west to east: Segment A-B includes the 0.2 miles (1040') of the route containing the National Register-listed Brush Creek Bridge; Segment C-D contains a 0.86-mile (4532') stretch and four culverts, and Segment E-F is a 170' segment that was retained during the interchange reconstruction in order to allow access to two residences. In total, the three road segments contain 1.1 miles of the original 1.6 miles from Riverton to the bridge.

<sup>1</sup> Figure numbers are continued from original nomination.

United States Department of the Interior  
National Park Service

National Register of Historic Places  
Continuation Sheet

Name of Property

County and State

Name of multiple listing (if applicable)

Section number 7 Page 1

Kansas Route 66 Historic District-North Baxter Springs Boundary Increase  
Cherokee County, Kansas  
BC100000495

National Park Service Certification

I hereby certify that this property is:

- ☒ entered in the National Register  
☐ determined eligible for the National Register  
☐ determined not eligible for the National Register  
☐ removed from the National Register  
☐ other (explain:)

  
Signature of the Keeper

1-11-17  
Date of Action

**United States Department of the Interior**  
**National Park Service**

**National Register of Historic Places**  
**Continuation Sheet**

Kansas Route 66 Historic District –  
North Baxter Springs  
Cherokee County, Kansas

Section numbers 2, 5, 7, 10

Page 2

This section of the road is flat and characteristic of a farmland area. The road lowers in elevation as it approaches the Brush Creek Bridge.

Continuing the numbering from the original nomination, the following resources are added to the amended district:

7. Roadbed Segment A-B (contributing site)

Beginning approximately 720' due north of the existing north boundary, Segment A-B runs in a southwest-to-northeast path. The Brush Creek Marsh Arch Bridge is located at the segment's southwestern end. Segment A-B measures 1040' in length and, with its associated right-of-way, contains 1.2 acres.

When the bypass was built around the Brush Creek Bridge the original section of the road approaching was not disturbed. Today motorists can travel over the road and cross through the bridge.

8. Roadbed Segment C-D (contributing site)

The western end Segment C-D starts at the quarter section line (visible by a north-south running tree line), approximately 750' due east of Segment A-B.<sup>2</sup> The continuous roadbed extends approximately 478' east of SE 60<sup>th</sup> Road. The 0.86-mile site contains 8.65 acres, including its associated right-of-way.

An unknown concrete structure is located on the north side of the roadbed a few feet east of the old Kansas, Oklahoma & Gulf Railroad alignment where it formerly crossed Route 66.<sup>3</sup> The poured-concrete structure does not appear to be a culvert; however, heavy vegetation at this location prevented further investigation. No concrete was visible to the south of the road. No guard rails are in place, but there is no visible evidence that rails originally existed here. The structure is approximately 20' long.

Also found within this stretch of roadbed are three culverts, which are described below.

9. Roadbed Segment E-F (contributing site)

Approximately 675' east of Segment C-D is the western edge of Segment E-F. This 170' portion of the historic roadway was retained to allow access to two residences (only one remains as of 2016). Together with its associated right-of-way, this segment includes 0.2 acres.

The pavement of each segment is in good condition with minimal cracking. Recently painted Route 66 signs are found on the roadbed every tenth of a mile. Like the rest of the district's roadbed, the segments being nominated in this boundary expansion measure 25' wide, except at the bridge itself which is a narrower 24' width, and include a 12.5' right-of-way on either side of roadbed.<sup>4</sup> Typical grassy shoulders on both sides of the roadbed slope downward toward ditches.

<sup>2</sup> This is the quarter section line between the NW/4, NW/4 and the NE/4, NW/4 of Section 24, Township 34 South, Range 24 East (to the south of the road) and between the SW/4, SW/4 and the SE/4, SW/4 of Section 13 Township 34 South, Range 24 East to the north of the road.

<sup>3</sup> This structure may be associated with the former Route 66 underpass installed by the KO&G Railroad in 1926 in order to eliminate concerns about motor traffic encountering rail traffic at this juncture [*The Baxter Herald* (29 April 1926): n.p.]. The road was re-graded at this point when the rail line was abandoned.

<sup>4</sup> The width of rights-of-way is based upon typical measurements for similar roads. A 12.5' right-of-way is assumed for both sides of the roadway, making the entire linear corridor 50' wide.

United States Department of the Interior  
National Park Service

National Register of Historic Places  
Continuation Sheet

Kansas Route 66 Historic District –  
North Baxter Springs  
Cherokee County, Kansas

Section numbers 2, 5, 7, 10

Page 3

10. Culvert #6 (contributing structure) 37.075299,-94.731306

This concrete box culvert is located a few feet east of a tree line marking the half section of Section 24 (to the south) and Section 13 (to the north). No guard rails are in place, but there is no visible evidence that rails were ever installed. The culvert has concrete wing walls that angle away from the box and are below road level. The structures measures approximately 6'-0" tall by 9'-0" wide.

11. Culvert #7 & #8 (contributing structures)

These two identical concrete box culverts are at the intersection of SE 60th and Route 66, below road level. These small culverts run under SE Beasley Road with one on the east side of SE 60<sup>th</sup> and one on the west side. They are intact other than the guardrails that have been removed. The culverts have concrete wing walls and each measure approximately 3'-0" tall by 7'-0" wide (similar to Culvert #4 in the original nomination).

*Integrity*

These six resources retain a high degree of integrity in terms of location, setting, feeling, and association, and fair integrity of materials and workmanship, mostly due to the removal of small sections of the continuous roadbed. Together with the original portion of this district, the resources comprising the Kansas Route 66 Historic District – North Baxter Springs meet the registration requirements outlined in the multiple property nomination for their contribution to the cultural landscape of Route 66.

**Section 10. Geographical Data**

The original nomination gives the nominated acreage as 26.5. Based on right-of-way information (25' roadbed plus 12.5' right-of-way on both sides), the total acreage of the original nomination equals **12.7 acres**.

The boundary expansion adds **6.6 acres**

The total acreage for the entire district is **19.3**

**See associated boundary maps for coordinates** (*Figures 8 through 10*).

**Verbal Boundary Description**

The 1.1-mile linear boundary expansion includes the 25-foot roadway (SE Beasley Road), its associated historic culverts, the National Register-listed Brush Creek Bridge, and the road's right-of-way (measured at 12.5 feet on either side of roadway). The west boundary point (A: 37.073270,-94.741051) begins approximately 1/10<sup>th</sup> of a mile north of the district's original north boundary. The east boundary point (F: 37.075016,-94.717785) is the eastern-most point of the historic Route 66 west of US-69 Hwy. The nominated expanded boundary is entirely owned by Cherokee County.

**Boundary Justification**

Along with the original 2.1 miles of Route 66 north of Baxter Springs, this 3.2-mile roadway contains all extant remains of Route 66 between Riverton and Baxter Springs.

**United States Department of the Interior**  
**National Park Service**

**National Register of Historic Places**  
**Continuation Sheet**

Kansas Route 66 Historic District –  
North Baxter Springs  
Cherokee County, Kansas

Section numbers 2, 5, 7, 10

Page 4

**Photograph Log**

**See attached photo key.**

Name of Property: Kansas Route 66 Historic District – North Baxter Springs (Boundary Expansion)

City or Vicinity: Riverton vicinity

County: Cherokee

State: Kansas

Photographer: Amanda K. Loughlin (KSHS)

Date

Photographed: September 8, 2016

Description of Photograph(s) and number, include description of view indicating direction of camera:

**001 of 010:** Looking south at north boundary point of original nomination.

**002 of 010:** Looking north toward Brush Creek Bridge and Segment A-B, and showing the newer section of road that bypasses the bridge.

**003 of 010:** Looking NE from Point A through Brush Creek Bridge along Segment A-B

**004 of 010:** Looking SW from middle of Segment A-B

**005 of 010:** Looking east from Point B. Segment C-D is visible in background

**006 of 010:** Looking west from near Point C

**007 of 010:** Culvert #6 along Segment C-D, looking NE at south side of culvert

**008 of 010:** Looking WSW along Segment C-D, showing unknown concrete structure

**009 of 010:** Looking east along Segment C-D toward intersection with SE 60<sup>th</sup> St

**010 of 010:** Looking west along Segment C-D from near Point D

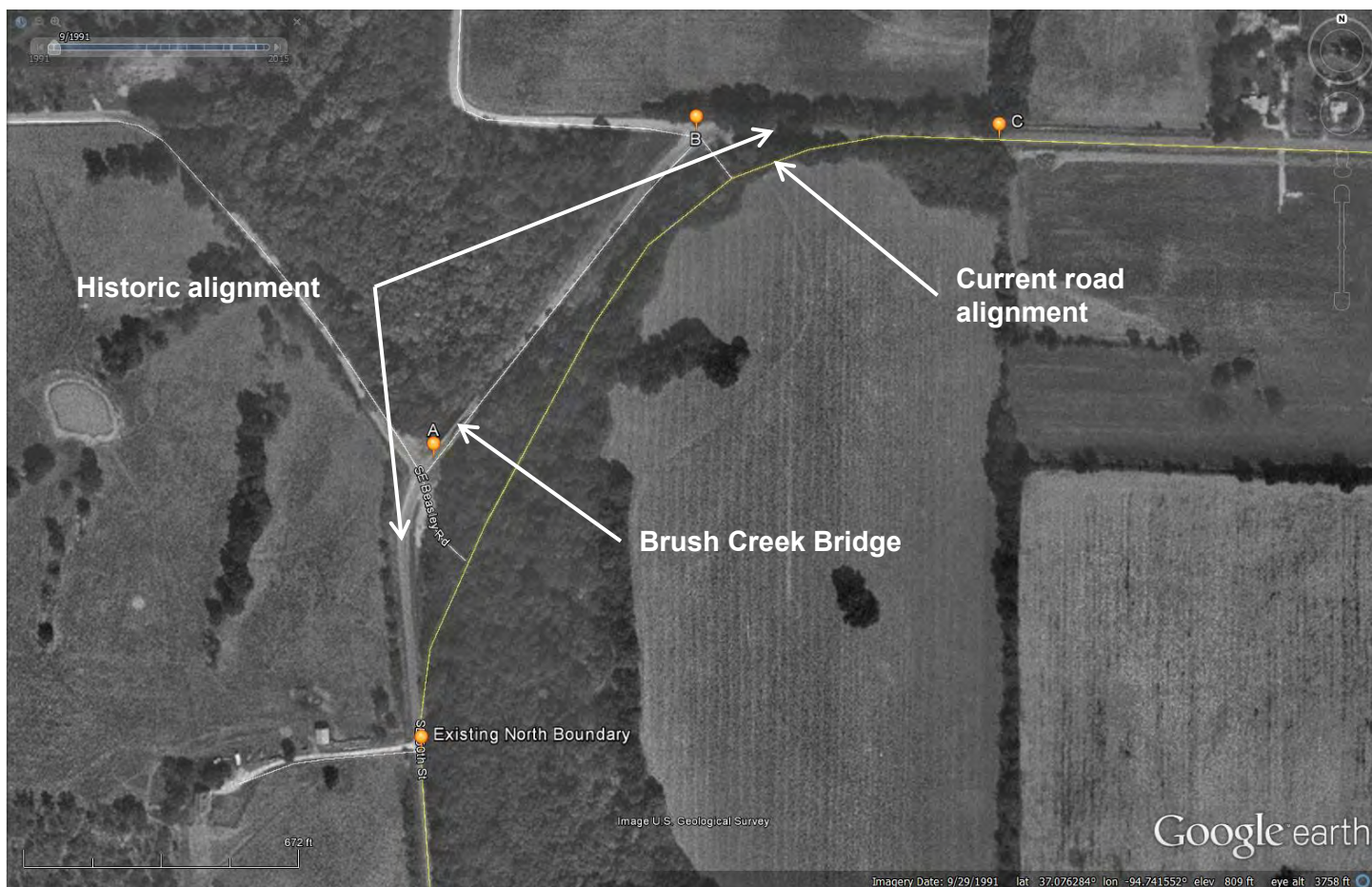


Kansas Route 66 Historic District – North Baxter Springs (Boundary Increase)  
Name of Property

Cherokee County, Kansas  
County and State

**Figure 5.**

1991 Google aerial image showing the path of Route 66 before road realignment near Brush Creek Bridge.

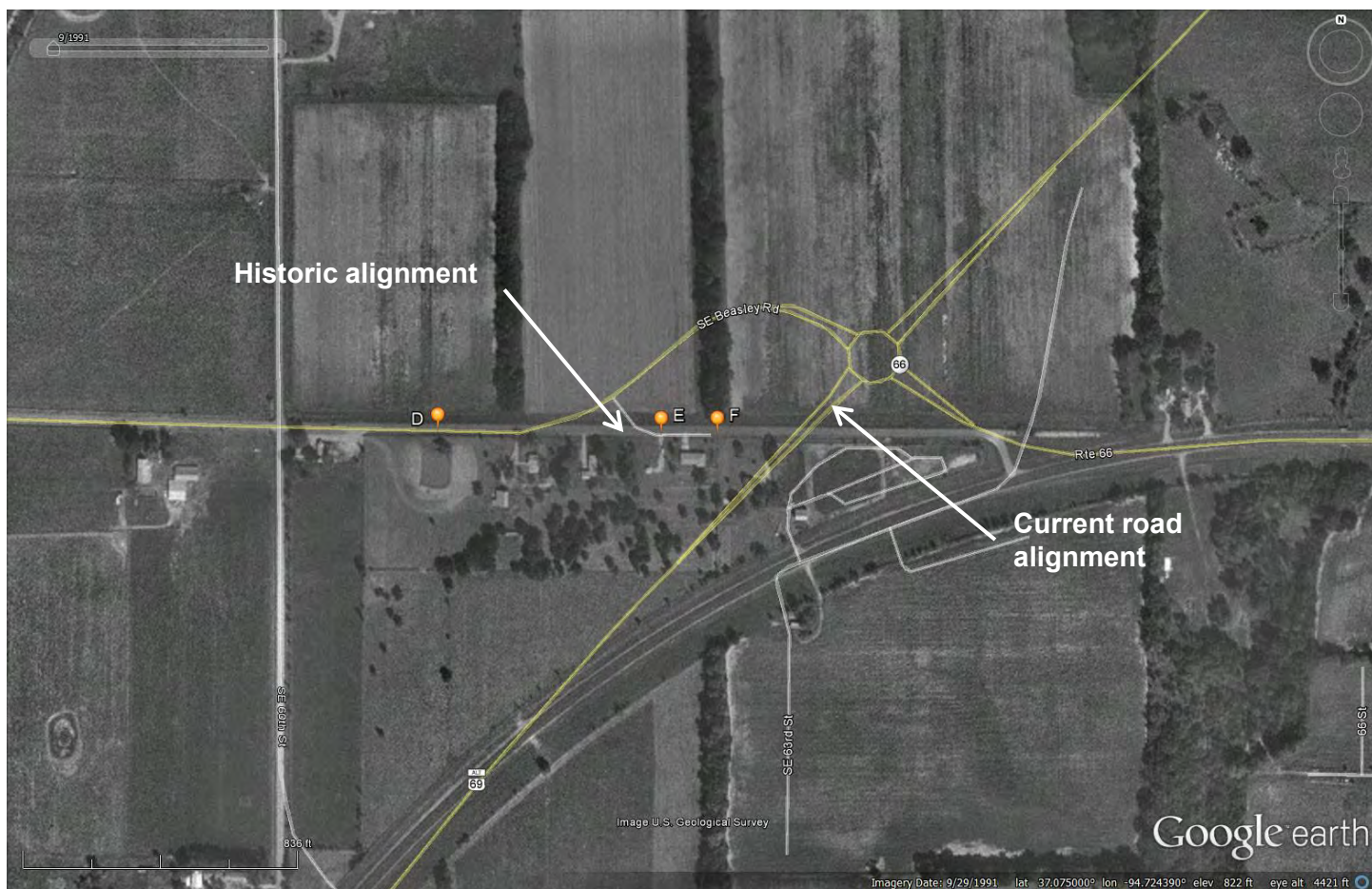


Kansas Route 66 Historic District – North Baxter Springs (Boundary Increase)  
Name of Property

Cherokee County, Kansas  
County and State

**Figure 6.**

1991 Google aerial image showing the path of Route 66 before road realignment near Brush Creek Bridge.

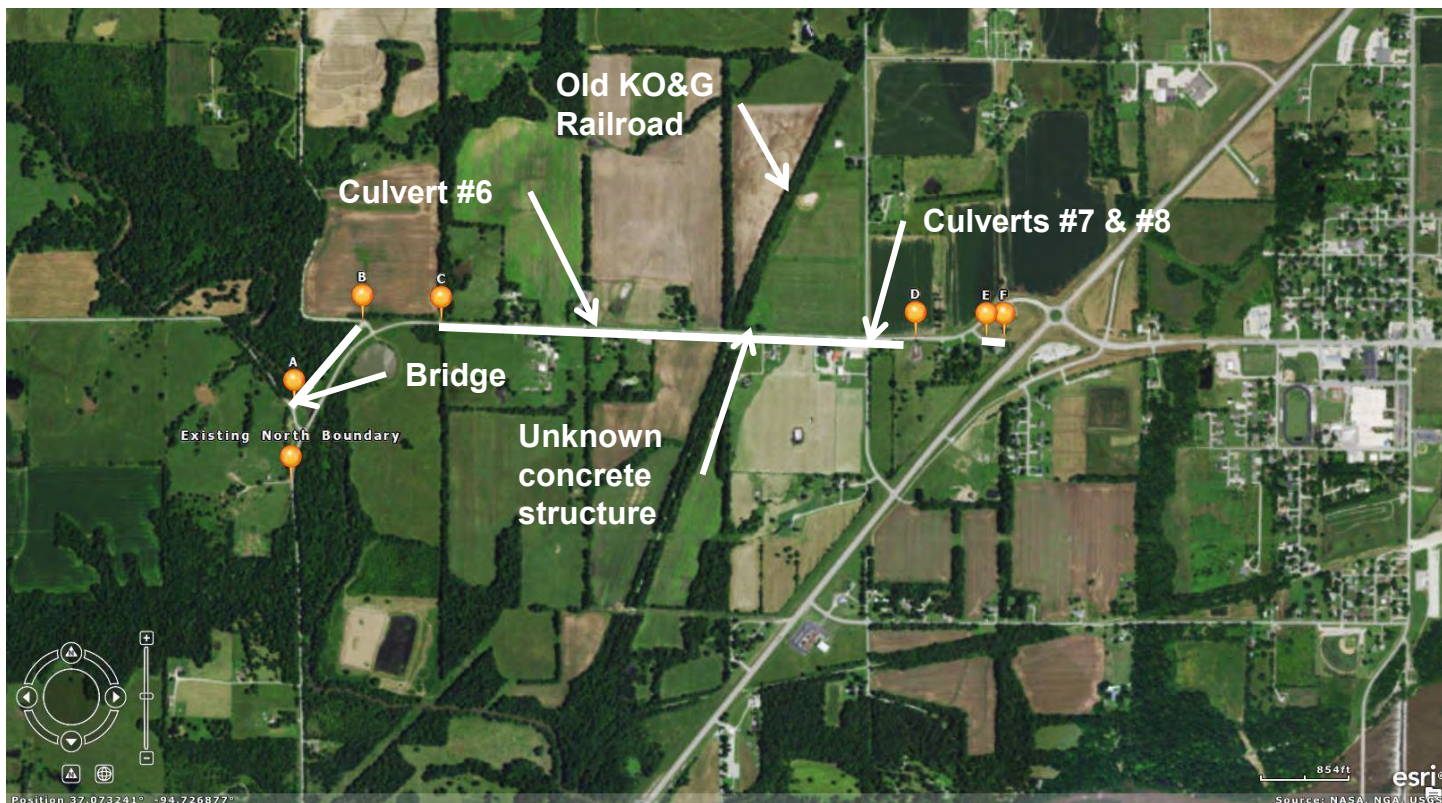




Kansas Route 66 Historic District – North Baxter Springs (Boundary Increase)  
Name of Property

Cherokee County, Kansas  
County and State

**Figure 7.**  
ESRI Aerial, showing extent of boundary expansion





Kansas Route 66 Historic District – North Baxter Springs (Boundary Increase)  
Name of Property

Cherokee County, Kansas  
County and State

**Figure 8.**  
Segment A-B.



**Latitude/Longitude Coordinates**

Datum WGS84

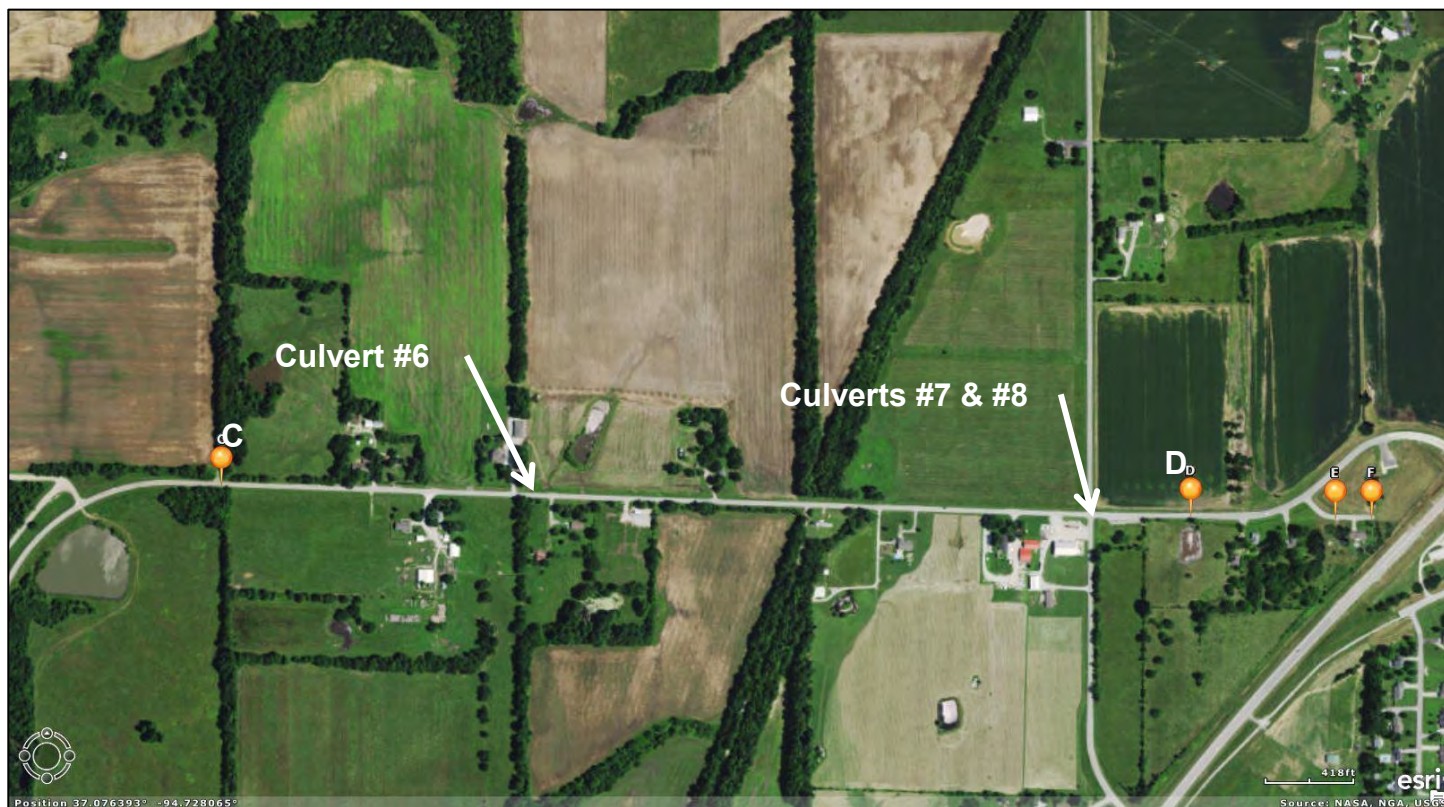
A: 37.073270, -94.741051

B: 37.075493, -94.738810

Kansas Route 66 Historic District – North Baxter Springs (Boundary Increase)  
Name of Property

Cherokee County, Kansas  
County and State

**Figure 9.**  
Segment C-D.



**Latitude/Longitude Coordinates**

Datum WGS84

C: 37.075442, -94.736231

D: 37.075044, -94.720687



Kansas Route 66 Historic District – North Baxter Springs (Boundary Increase)  
Name of Property

Cherokee County, Kansas  
County and State

**Figure 10.**  
Segment E-F.



**Latitude/Longitude Coordinates**

Datum WGS84

E: 37.075015, -94.718368

F: 37.075016, -94.717785



Kansas Route 66 Historic District – North Baxter Springs (Boundary Increase)  
Name of Property

Cherokee County, Kansas  
County and State

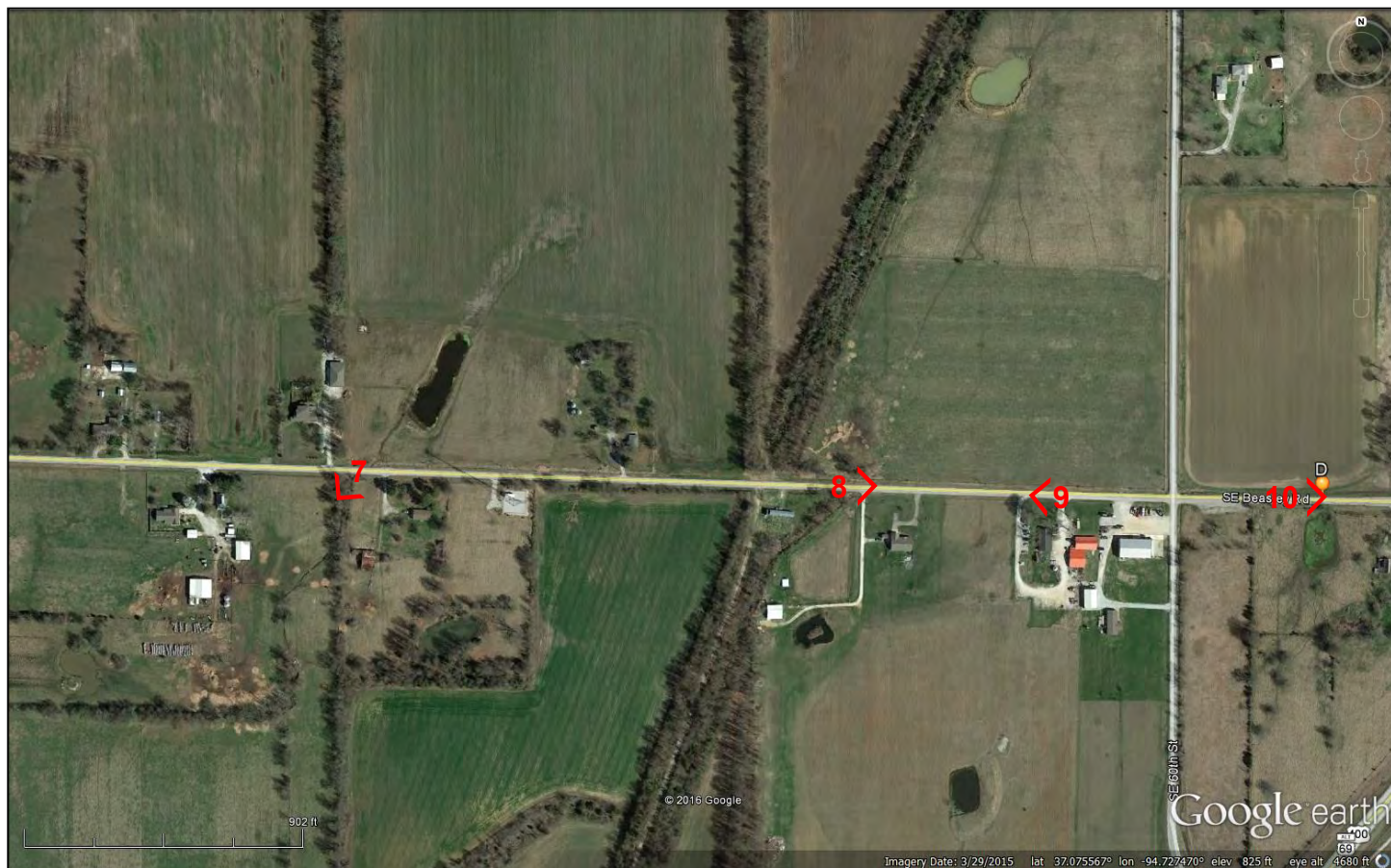
**Photo Key (West End).**



Kansas Route 66 Historic District – North Baxter Springs (Boundary Increase)  
Name of Property

Cherokee County, Kansas  
County and State

**Photo Key (East End).**













































UNITED STATES DEPARTMENT OF THE INTERIOR  
NATIONAL PARK SERVICE

NATIONAL REGISTER OF HISTORIC PLACES  
EVALUATION/RETURN SHEET

Requested Action:	Boundary Update	
Property Name:	Kansas Route 66 Historic District--North Baxter Springs	
Multiple Name:	Route 66 in Kansas MPS	
State & County:	KANSAS, Cherokee	

Date Received:	Date of Pending List:	Date of 16th Day:	Date of 45th Day:	Date of Weekly List:
12/2/2016	12/27/2016	1/11/2017	1/17/2017	1/17/2017

Reference number:	BC100000495
Nominator:	State
Reason For Review:	

  X   Accept             Return             Reject        1/11/2017   Date

Abstract/Summary Comments:	
Recommendation/ Criteria	

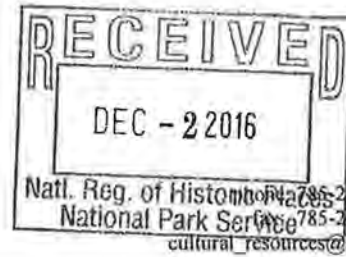
Reviewer	<u>  Alexis Abernathy  </u>	Discipline	<u>  Historian  </u>
Telephone	<u>  (202)354-2236  </u>	Date	<u>                    </u>

DOCUMENTATION:    see attached comments : No    see attached SLR : No

If a nomination is returned to the nomination authority, the nomination is no longer under consideration by the National Park Service.



6425 SW 6th Avenue  
Topeka KS 66615



Sam Brownback, Governor  
Jennie Chinn, Executive Director

November 21, 2016

Paul Loether, National Register Chief  
National Register of Historic Places  
National Park Service  
1201 Eye Street, NW (2280)  
Washington, DC 20005

Re: National Register documents

Dear Mr. Loether:

Please find enclosed the following National Register documents:

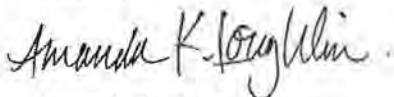
- **Arvonia Township Hall, Lebo vicinity, Osage County, Kansas (new nomination)**
  - Physical, signed copy of the nomination's first page;
  - 1 CD (disk #1) with a PDF of the true and correct copy of the nomination;
  - 1 CD (disk #2) with photographs
- **Leonard, J.T., & Anna, House; Girard, Crawford County, Kansas (new nomination)**
  - Physical, signed copy of the nomination's first page;
  - 1 CD (disk #1) with a PDF of the true and correct copy of the nomination and .kmz file;
  - 1 CD (disk #2) with photographs
- **Eskridge City Park & Bandstand, Eskridge, Wabaunsee County, Kansas (resubmission)**
  - Physical, signed copy of the nomination's first page;
  - 1 CD (disk #1) with a PDF of the true and correct copy of the nomination, copy of city (owner) support, copy of letter from Alexis Abernathy recommending a resubmission and .kmz file;
  - 1 CD (disk #2) with photographs
- **Olathe Cemetery, Olathe, Johnson County, Kansas (new nomination)**
  - Physical, signed copy of the nomination's first page;
  - 1 CD (disk #1) with a PDF of the true and correct copy of the nomination and .kmz file;
  - 1 CD (disk #2) with photographs
- **Engle, Jacob S., House, Abilene, Dickinson County, Kansas (new nomination)**
  - Physical, signed copy of the nomination's first page;
  - 1 CD (disk #1) with a PDF of the true and correct copy of the nomination, copies of letters of support from the city of Abilene (2)
  - 1 CD (disk #2) with photographs



- **Hoffman & Lamb Buildings, Enterprise, Dickinson County, Kansas (new nomination)**
  - Physical, signed copy of the nomination's first page;
  - 1 CD (disk #1) with a PDF of the true and correct copy of the nomination;
  - 1 CD (disk #2) with photographs
- **Lander's Wagon & Carriage Shop, Humboldt, Allen County, Kansas (new nomination)**
  - Physical, signed copy of the nomination's first page;
  - 1 CD (disk #1) with a PDF of the true and correct copy of the nomination;
  - 1 CD (disk #2) with photographs
- **Grand Army of the Republic (GAR) Memorial Arch, Junction City, Geary County, Kansas (new nomination)**
  - Physical, signed copy of the nomination's first page;
  - 1 CD (disk #1) with a PDF of the true and correct copy of the nomination;
  - 1 CD (disk #2) with photographs
- **Reid, Lyman, House; Ottawa, Franklin County, Kansas (new nomination)**
  - Physical, signed copy of the nomination's first page;
  - 1 CD (disk #1) with a PDF of the true and correct copy of the nomination;
  - 1 CD (disk #2) with photographs
- **Kansas Route 66 Historic District – North Baxter Springs; Riverton & Baxter Springs vicinities, Cherokee County, Kansas (boundary expansion; additional documentation)**
  - Physical, signed copy of the nomination's first page;
  - 1 CD (disk #1) with a PDF of the true and correct copy of the nomination and .kmz file;
  - 1 CD (disk #2) with photographs
- **Beckett, Charles K., House, Sterling, Rice County, Kansas (removal request)**
  - Physical, signed copy of the removal request;
  - 1 CD (disk #1) with a PDF of the true and correct copy of the removal request;
  - 1 CD (disk #2) with photograph
- **Spring Creek School, Corbin vicinity, Sumner County, Kansas (removal request)**
  - Physical, signed copy of the removal request's first page;
  - 1 CD (disk #1) with a PDF of the true and correct copy of the removal request;
  - 1 CD (disk #2) with photographs

If you have any questions about these enclosed items, please contact me at 785-272-8681 ext. 216 or [aloughlin@kshs.org](mailto:aloughlin@kshs.org).

Sincerely,



Amanda K. Loughlin  
National Register Coordinator

Enclosures