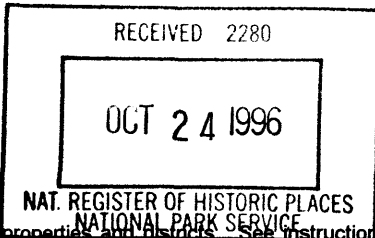


**United States Department of the Interior  
National Park Service**



**NATIONAL REGISTER OF HISTORIC PLACES  
REGISTRATION FORM**

This form is for use in nominating or requesting determinations for individual properties and historic districts. See instructions in How to Complete the National Register of Historic Places Registration Form (National Register Bulletin 16A). Complete each item by marking "X" in the appropriate box or by entering the information requested. If any item does not apply to the property being documented, enter "N/A" for "not applicable." For functions, architectural classification, materials, and areas of significance, enter only categories and subcategories from the instructions. Place additional entries and narrative items on continuation sheets (NPS Form 10-900a). Use a typewriter, word processor, or computer, to complete all items.

**1. Name of Property**

historic name Fellsmere Public School

other names/site number N/A

**2. Location**

street & number 22 South Orange Street N/A  not for publication

city or town Fellsmere N/A  vicinity

state FLORIDA code FL county Indian River code 061 zip code 32948

**3. State/Federal Agency Certification**

As the designated authority under the National Historic Preservation Act, as amended, I hereby certify that this  nomination  request for determination of eligibility meets the documentation standards for registering properties in the National Register of Historic Places and meets the procedural and professional requirements set forth in 36 CFR Part 60. In my opinion, the property  meets  does not meet the National Register criteria. I recommend that this property be considered significant  nationally  statewide  locally. ( See continuation sheet for additional comments.)

*Blair W. Perry* Date 10/21/96  
Signature of certifying official/Title Date

Florida State Historic Preservation Officer, Division of Historical Resources  
State or Federal agency and bureau

In my opinion, the property  meets  does not meet the National Register criteria. ( See continuation sheet for additional comments.)

\_\_\_\_\_  
Signature of certifying official/Title Date

\_\_\_\_\_  
State or Federal agency and bureau

**4. National Park Service Certification**

I hereby certify that the property is:

- entered in the National Register  See continuation sheet
- determined eligible for the National Register  See continuation sheet.
- determined not eligible for the National Register  See continuation sheet.
- removed from the National Register.
- other, (explain) \_\_\_\_\_

*Edson H. Beall* Signature of the Keeper Date of Action 11-22-96

Entered in the  
National Register

**5. Classification**

**Ownership of Property**  
(Check as many boxes as apply)

- private
- public-local
- public-State
- public-Federal

**Category of Property**  
(Check only one box)

- buildings
- district
- site
- structure
- object

**Number of Resources within Property**  
(Do not include any previously listed resources in the count)

| Contributing | Noncontributing |            |
|--------------|-----------------|------------|
| 1            | 0               | buildings  |
| 0            | 0               | sites      |
| 0            | 0               | structures |
| 0            | 0               | objects    |
| 1            | 0               | total      |

**Name of related multiple property listings**  
(Enter "N/A" if property is not part of a multiple property listing.)

**Number of contributing resources previously listed in the National Register**

**Historical and Architectural Resources of Fellsmere, Florida**

0

**6. Function or Use**

**Historic Functions**  
(Enter categories from instructions)

EDUCATION/School

**Current Functions**  
(Enter categories from instructions)

GOVERNMENT/ government office

**7. Description**

**Architectural Classification**  
(Enter categories from instructions)

Other: vernacular

**Materials**  
(Enter categories from instructions)

foundation Concrete

walls Brick

roof Tar and Gravel

other

**Narrative Description**

(Describe the historic and current condition of the property on one or more continuations sheets.)

8. Statement of significance

Applicable National Register Criteria

(Mark "X" in one or more boxes for the criteria qualifying the property for National Register listing.)

- Property is associated with events that have made a significant contribution road patterns of our history.
Property is associated with the lives of persons significant in our past.
Property embodies the distinctive characteristics of a type, period, or method of construction...
Property has yielded, or is likely to yield information important in prehistory or history.

Criteria Considerations

(Mark "X" in all the boxes that apply.)

Property is:

- A owned by a religious institution or used for religious purposes.
B removed from its original location.
C a birthplace or grave.
D a cemetery.
E a reconstructed building, object, or structure.
F a commemorative property.
G less than 50 years of age or achieved significance within the past 50 years

Narrative Statement of Significance

(Explain the significance of the property on one or more continuation sheets.)

9. Major Bibliographical References

Bibliography

Cite the books, articles, and other sources used in preparing this form on one or more continuation sheets.)

Previous documentation on file (NPS):

- preliminary determination of individual listing (36 CFR 36) has been requested
previously listed in the National Register
previously determined eligible by the National Register
designated a National Historic Landmark
recorded by Historic American Buildings Survey
recorded by Historic American Engineering Record

Areas of Significance

(Enter categories from instructions)

- Architecture
Community Planning and Development
Education
Early Settlement

Period of Significance

1916-1946

Significant Dates

1916

Significant Person

N/A

Cultural Affiliation

N/A

Architect/Builder

Arch: Trimble, Frederick H.
Blder: Sanders, A. F.

Primary location of additional data:

- State Historic Preservation Office
Other State Agency
Federal agency
Local government
University
Other

Name of Repository

#

Fellsmere Public School  
Name of Property

Indian River, Florida  
County and State

**10. Geographical Data**

**Acreege of Property** less than 1 acre

**UTM References**

(Place additional references on a continuation sheet.)

|   |      |             |               |
|---|------|-------------|---------------|
| 1 | 1 7  | 5 3 9 1 0 0 | 3 0 7 1 2 4 0 |
|   | Zone | Easting     | Northing      |
| 2 |      |             |               |

|   |      |         |          |
|---|------|---------|----------|
| 3 |      |         |          |
|   | Zone | Easting | Northing |
| 4 |      |         |          |

See continuation sheet

**Verbal Boundary Description**

(Describe the boundaries of the property on a continuation sheet.)

**Boundary Justification**

(Explain why the boundaries were selected on a continuation sheet.)

**11. Form Prepared By**

name/title Sidney Johnston/Sherry Piland, Historic Sites Specialist

organization Bureau of Historic Preservation date August 1996

street & number R.A. Gray Building, 500 S. Bronough Street telephone (904) 487-2333

city or town Tallahassee state Florida zip code 32399-0250

**Additional Documentation**

Submit the following items with the completed form:

**Continuation Sheets**

**Maps**

A **USGS map** (7.5 or 15 minute series) indicating the property's location.

A **Sketch map** for historic districts and properties having large acreage or numerous resources.

**Photographs**

Representative **black and white photographs** of the property.

**Additional items**

(check with the SHPO or FPO for any additional items)

**Property Owner**

(Complete this item at the request of SHPO or FPO.)

name \_\_\_\_\_

street & number \_\_\_\_\_ telephone \_\_\_\_\_

city or town \_\_\_\_\_ state \_\_\_\_\_ zip code \_\_\_\_\_

**Paperwork Reduction Act Statement:** This information is being collected for applications to the National Register of Historic Places to nominate properties for listing or determine eligibility for listing, to list properties, and amend listings. Response to this request is required to obtain a benefit in accordance with the National Historic Preservation Act, as amended (16 U.S.C. 470 et seq.).

**Estimated Burden Statement:** Public reporting burden for this form is estimated to average 18.1 hours per response including time for reviewing instructions, gathering and maintaining data, and completing and reviewing the form. Direct comments regarding this burden estimate or any aspect of this form to the Chief, Administrative Services Division, National Park Service, P.O. Box 37127, Washington, DC 20013-7127; and the Office of Management and Budget, Paperwork Reductions Projects (1024-0018), Washington, DC 20503.

United States Department of the Interior  
National Park Service

**National Register of Historic Places  
Continuation Sheet**

FELLSMERE PUBLIC SCHOOL  
INDIAN RIVER CO., FL.

Section number 7 Page 1

---

The Fellsmere Public School is located at 22 South Orange Street, in Fellsmere, Florida. The rectangular, two-story, brick building has a raised basement and a flat, built-up roof. It rests on a concrete foundation. The 18,500 square foot, vernacular building assumes a monumental presence in the small community where few buildings rise above one story. The building retains its original architectural integrity to a high degree.

The Fellsmere Public School, constructed in 1916, contributes to the **Historic and Architectural Resources of Fellsmere, Florida**, multiple property group under property type F.3, **Public Buildings**.

**SETTING**

The Fellsmere Public School lies south of County Road 512 (Pennsylvania Avenue), the primary corridor into Fellsmere. The building sits back approximately seventy feet from Orange Street. A small prefabricated building that temporarily houses the administrative offices of Fellsmere's city hall lies west (to the rear) of the school. Also to the west are three storage buildings. A large field, used as a playground, extends to the east. Vacant land is to the south. A small stand of live oaks line Orange Street in front of the school.

**EXTERIOR DESCRIPTION**

The main facade of the Fellsmere Public School faces east, extending 140 feet along Orange Street (Photo 1). A cornerstone is located at the northeast corner of the building (Photo 2). The primary entrance is centrally located and identified by a projecting, flat-roofed portico (Photo 3). The portico roof, with a solid rail, is supported by squat brick piers. It shelters three pairs of entrance doors (Photo 4). The center pair are wood; the flanking pairs are glass-paneled. All are surmounted by transoms.

The flat roof of the building is obscured by a low parapet that curves upward over the entrance bay. Just below the parapet is a projecting, stamped metal cornice. Midway between the cornice and the top of the second floor windows is a narrow, cast stone, belt course that extends around the building.

United States Department of the Interior  
National Park Service

## National Register of Historic Places Continuation Sheet

FELLSMERE PUBLIC SCHOOL  
INDIAN RIVER CO., FL.

Section number 7 Page 2

---

The building is divided into bays by engaged brick piers that rest on the basement plinth and that terminate above the cornice as squared parapet projections. The piers have modest pedestals and corbeled cornices, lending subtle classical influences to the building. They provide vertical rhythm and reveal the structural system of the building. The large spaces between piers mark classroom spaces and contrast with the more narrow openings that indicate stairwells and hallways. Windows fill the bays, either paired or in groupings of four. The wood windows are 6/6, double hung sash. Rectangular brick spandrels extend between the sets of double-hung sash windows. The raised basement level is pierced by casement windows.

The south (Photo 6) and north (Photo 5) elevations of the building are identical. Each is divided into three bays, with a grouping of four windows in the end bays of each floor, and paired windows in the center bay of each floor. A metal fire escape projects from the south elevation.

The west elevation (Photos 5 and 6) is similar to the main (east) elevation. A central projection with a curvilinear parapet contains a basement level entrance protected by a flat roof. Although fenestration and pilaster arrangement convey the same cadence as that found on the front facade, the central projection displays smaller double-hung sash windows than those found on the east facade. A fire escape projects near the northwest corner of the second story.

### INTERIOR DESCRIPTION

The floor plan of the building retains much of its historic configuration. The front entrance doors open into a spacious hallway (photograph 7). A broad, straight staircase divided by a boxed handrail extends from the first story central hallway to a landing at the rear elevation. Smaller quarter turn stairs open to both sides of the landing, providing access to the second story. Smaller secondary halls extend to the north and south, leading to the first floor classrooms (Photos 8 and 9), restrooms, and administrative offices. Six classrooms are located on the first floor.

United States Department of the Interior  
National Park Service

**National Register of Historic Places  
Continuation Sheet**

FELLSMERE PUBLIC SCHOOL  
INDIAN RIVER CO., FL.

Section number 7 Page 3

---

The second floor central hallway (Photo 10) provides access to three classrooms, a conference room, a music room, and an auditorium. The auditorium (Photo 11), at the north end of the building, measures 45 x 60 feet. The ceiling is twenty-feet high and is finished with boxed beams and beaded board. Original wood seats with cast metal frames are arranged across the auditorium floor. The stage has a square proscenium and pine flooring.

The ceilings in the rest of the building rise twelve feet and are finished with plaster. The floors are pine. Paneled wood doors with single, frosted glazing and 6-light pivot transoms open into interior spaces. Most original features remain intact, including doors, transoms, chalk boards, and risers in the music room. Picture, chair, and baseboard moldings also remain largely undisturbed. A few built-in cabinets continue to provide storage space in classrooms.

**ALTERATIONS**

Periodic upgrades of the school included improvements to the heating system in 1935. A remodeling in the 1950s provided students with a science lab, an industrial arts area, and an improved basement cafeteria. Firewalls and doors were installed ca. 1970 on the primary north/south corridor, so they could be closed off from the center entrance corridor as needed (Photo 7).

United States Department of the Interior  
National Park Service

# National Register of Historic Places Continuation Sheet

FELLSMERE PUBLIC SCHOOL  
INDIAN RIVER CO., FL.

Section number 8 Page 1

The Fellsmere Public School fulfills National Register of Historic Places criteria A and C in the areas of architecture, community planning and development, education, and early settlement. The first masonry school erected in Indian River County, the school was designed by Frederick H. Trimble, a prominent Orlando architect who began his career in Fellsmere. The school was completed in 1916 and served the education needs of the area until 1967, when a new building was constructed. The large size of the building and its architectural embellishments reflect the optimistic future anticipated by the developers of Fellsmere. The building is currently owned by the City of Fellsmere, which maintains various social services and departments there. The building contributes to the **Historic and Architectural Resources of Fellsmere, Florida**, multiple property group under Historic Context I, **Founding and Initial Period of Development**, and under property type F.3, **Public Buildings**.

## HISTORICAL CONTEXT

The Fellsmere School is historically linked to the broader development and expansion of St. Lucie County's school system. Organized in 1905, St. Lucie County's Board of Public Instruction was comprised of board members who operated the general affairs of the system with trustees in each community who supervised local affairs. School policy and length of terms were largely a function of local control, and bonds were enacted to finance the construction of schools. Increased taxation also provided assistance for the construction of schools in several towns and emerging settlements in the county. Early schools in the area were typically small, one-room, frame buildings. Improvements resulted from direct county supervision, an elected school board system, additional revenues and a more equitable system of taxation, and compulsory attendance. By 1914, many school buildings were inadequate to meet the needs of the county, and within several years new schools were built in Fort Drum, Fort Pierce, Harris, Midway, Okeechobee, and Taylor Creek. By 1916, 200 high school students were enrolled in the county's schools.

## HISTORIC SIGNIFICANCE

To help encourage settlement in Fellsmere, the Fellsmere Farms Company donated land for a school; a small, frame building



**United States Department of the Interior  
National Park Service****National Register of Historic Places  
Continuation Sheet****FELLSMERE PUBLIC SCHOOL  
INDIAN RIVER CO., FL.**Section number 8 Page 2

was completed in 1912. Within several years, Fellsmere's increased population compelled the local trustees to recommend that the Board of Public Instruction help arrange funding for the construction of a new school. The Board created a special taxing district, an election was held, and bonds were secured to finance construction. In 1915, the local trustees selected Frederick H. Trimble, a local architect, to design the new building. In September 1915, A. F. Sanders, a Fellsmere contractor, began construction of the Fellsmere Public School. The cornerstone was set in January 1916, and the building was completed in October at a cost of nearly \$40,000. The building contained twelve classrooms, administrative offices, and an auditorium.

The completion of the school came at a high point in Fellsmere's development, before flooding conditions destroyed crops in June 1915, and the onset of World War I dampened growth. The school enjoyed its highest enrollment, 136 students, in its first year, 1916-1917. In 1917, seven students graduated from the first high school class. Enrollment dropped off dramatically the following year, and not until the mid-1930s did the number of graduates equal that of the first class. In 1920, a high school alumni association was organized, and French and Spanish language classes were introduced into the curriculum. Sixty-three students attended classes during the 1920-1921 school year. The number of students graduating during the 1920s ranged from one in 1922 to a high water mark of six in 1928. In 1926, a Parent-Teacher Association was organized with the assistance of the Library Association, but disbanded ten years later. For several years in the early 1930s, the school failed to graduate any students. Nevertheless, the school played an important role educating the youth of Fellsmere, and the school provided an adequate facility that did not require expansion or replacement for many decades. In 1964, junior and senior high school classes were transferred elsewhere in Indian River County. The school continued to serve as a elementary school into the 1960s.

The school points with pride to a dedicated staff and faculty over the decades. Ina Elder served as principal between 1913 and 1924, and Mrs. Jesse Hunter began teaching in Fellsmere in 1911 and retired in 1929. Several graduates of Fellsmere High returned to educate the youth of the community. Mary McClure graduated from Fellsmere in 1917, and after teaching at Vero Beach for nearly one decade, returned to Fellsmere where she taught between 1929 and 1947. Students that later rose to some

**United States Department of the Interior  
National Park Service**

**National Register of Historic Places  
Continuation Sheet**

Section number 8 Page 3

**FELLSMERE PUBLIC SCHOOL  
INDIAN RIVER CO., FL.**

distinction include Laurie Ray who graduated from Fellsmere High School about 1930. Following graduation from seminary, Ray served as pastor in several Methodist churches in Florida and eventually was appointed district superintendent of the West Palm Beach district of the Florida Conference.

About 1980, the property was deeded by the school board to the City of Fellsmere, which maintains its police department in the basement. Several social services maintain offices on the first floor. Fellsmere's annual Frog Leg Festival is held on the school grounds.

**ARCHITECTURAL SIGNIFICANCE**

In the late nineteenth century, most schools in Florida's rural areas were simple, one-room, frame buildings. Beginning in the 1890s, increased attention was paid to practical interior improvements, such as illumination, ventilation, sanitation, furniture, and equipment. In the early twentieth century, larger and more permanent masonry buildings were constructed. These were frequently embellished with architectural details drawn from Gothic Revival, Mission/Spanish Colonial Revival, or Craftman styles.

The Fellsmere Public School shares characteristics similar to schools constructed throughout Florida during the early twentieth century. It is the largest and most impressive of the historic buildings in Fellsmere, and is also the oldest historic public school standing in Indian River County. The building is a good representation of Florida's education-related architecture of the early twentieth century. It retains its historic architectural integrity and character to a high degree.

The architect of the Fellsmere Public School, Frederick Trimble, was born in Canada in 1878, and educated at Morning Side College in Sioux City, Iowa. In 1914, after serving as an architect for the Methodist Episcopal Church in China for several years, he relocated to Florida and established a practice in Fellsmere. Many of his early designs were small, frame commercial buildings and residences in the town. Gradually, he began to travel to other communities, such as Fort Pierce, Okeechobee, Stuart, West Palm Beach, and even Jacksonville, to

**United States Department of the Interior  
National Park Service**

**National Register of Historic Places  
Continuation Sheet**

Section number 8 Page 4

**FELLSMERE PUBLIC SCHOOL  
INDIAN RIVER CO., FL.**

---

secure additional work. Trimble moved his architectural practice to Orlando in 1916.

Fellsmere Public School, completed in 1916, was Trimble's first public building project in Florida, and the largest project undertaken in Fellsmere during the period. By 1925, Trimble had designed fifty public schools in Florida, including the Delaney School in Orlando and schools in Lake Worth, Okeechobee, and St. Petersburg. He also designed the Vero Theater in Vero Beach (NR 1992). Trimble worked in a variety of revival styles.

The contractor who built the Fellsmere Public School, A. F. Sanders, was a native of Texas. He arrived in Fellsmere about 1913, and was one of several builders who settled in the community during its early period of growth. Sanders apparently left the community by 1918 and no other buildings have been attributed to him.

United States Department of the Interior  
National Park Service

**National Register of Historic Places  
Continuation Sheet**

FELLSMERE PUBLIC SCHOOL  
INDIAN RIVER CO., FL.

Section number   9   Page   1  

---

Biennial Report of the Superintendent of Public Instruction of  
the State of Florida. Tallahassee: T. J. Appleyard, 1916.

Cutler, Harry. History of Florida. Chicago: Lewis Publishing  
Company, 1923.

Mudge, Evelyn. "The Fellsmere Schools, 1911-1976." Unpub. mss.,  
Fellsmere, 1976.

**Official Records**

Deed and Mortgage Books. St. Lucie County Courthouse, Fort  
Pierce, Florida.

Minutes, St. Lucie County School Board.

**Maps**

Fire Insurance Map of Fellsmere, Florida. New York: Sanborn Map  
Company, 1924.

**United States Department of the Interior  
National Park Service**

**National Register of Historic Places  
Continuation Sheet**

**FELLSMERE PUBLIC SCHOOL  
INDIAN RIVER CO., FL.**

Section number 10 Page 1

---

**Verbal Boundary Description**

Town of Fellsmere, Block 103, lots 1-13.

**Boundary Justification**

All of Block 103 is under the ownership of the town of Fellsmere. Only the eastern half of the block is included in the boundary. The school building and vacant land that has been used for playgrounds and ballfields occupy this half of the block. The west half of the block contains a number of recently constructed buildings, including the City Hall, storage buildings, and garages.

United States Department of the Interior  
National Park Service

National Register of Historic Places  
Continuation Sheet

FELLSMERE PUBLIC SCHOOL  
INDIAN RIVER CO., FL.

Section number Photo Page 1

---

1. Fellsmere Public School, 22 South Orange Street
2. Fellsmere, Indian River County, Florida
3. Sherry Piland
4. April 1996
5. Bureau of Historic Preservation, 500 S. Bronough Street, Tallahassee, Florida
6. Main (east) facade on left, north elevation on right; view looking southwest
7. Photo 1 of 11

Items 1 and 2 are the same for the remaining photographs.

3. Sherry Piland
4. April 1996
5. Bureau of Historic Preservation, 500 S. Bronough Street, Tallahassee, Florida
6. Detail, main (east) facade, showing cornerstone; view looking southwest
7. Photo 2 of 11

3. Sidney Johnston
4. 1995
5. Historic Property Associates, Inc., P.O. Box 1002, St. Augustine, Florida
6. Main (east) facade on left, north elevation of right; view looking southwest
7. Photo 3 of 11

3. Sherry Piland
4. April 1996
5. Bureau of Historic Preservation, 500 S. Bronough Street, Tallahassee, Florida
6. Detail, main entrance, main (east) facade); view looking slightly southwest
7. Photo 4 of 11

3. Sidney Johnston
4. 1995
5. Historic Property Associates, Inc., P.O. Box 1002, St. Augustine, Florida
6. West (rear) elevation on right, north elevation on left; view looking southeast
7. Photo 5 of 11

United States Department of the Interior  
National Park Service

**National Register of Historic Places  
Continuation Sheet**

FELLSMERE PUBLIC SCHOOL  
INDIAN RIVER CO., FL.

Section number Photo Page 2



---

For the remaining photographs, items 3-5 are the same as in photograph 5.

6. West (rear) elevation on left, south elevation on right;  
view looking northeast
7. Photo 6 of 11
  
6. Interior view, first floor central hall and staircase; view  
looking southwest
7. Photo 7 of 11
  
6. Interior view, first floor classroom; view looking  
southeast
7. Photo 8 of 11
  
6. Interior view, second floor conference room; view looking  
northeast
7. Photo 9 of 11
  
6. Interior view, second floor hallway; view looking south
7. Photo 10 of 11
  
6. Interior view, second floor auditorium; view looking  
southeast
7. Photo 11 of 11

# Fellsmere Public School site plan

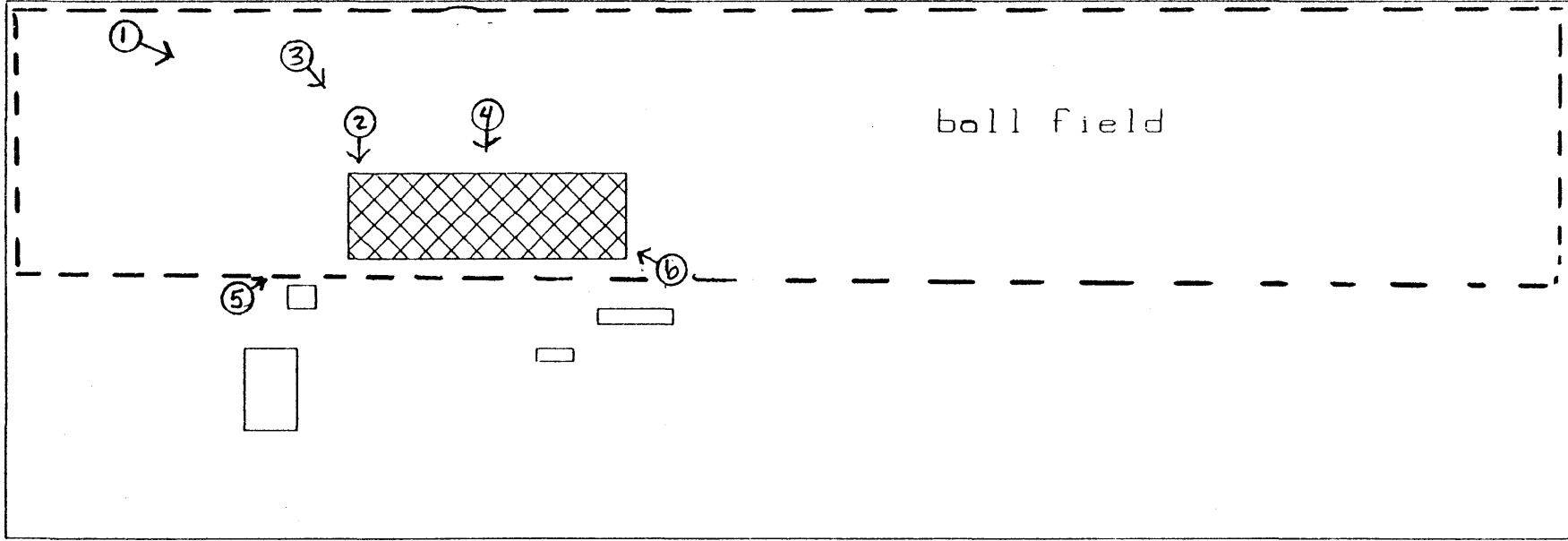
1" = 100'  
← N

Contrib. Bldg.:   
Photo Direction   
Boundary - - - -

playground

South Orange Street

ball field

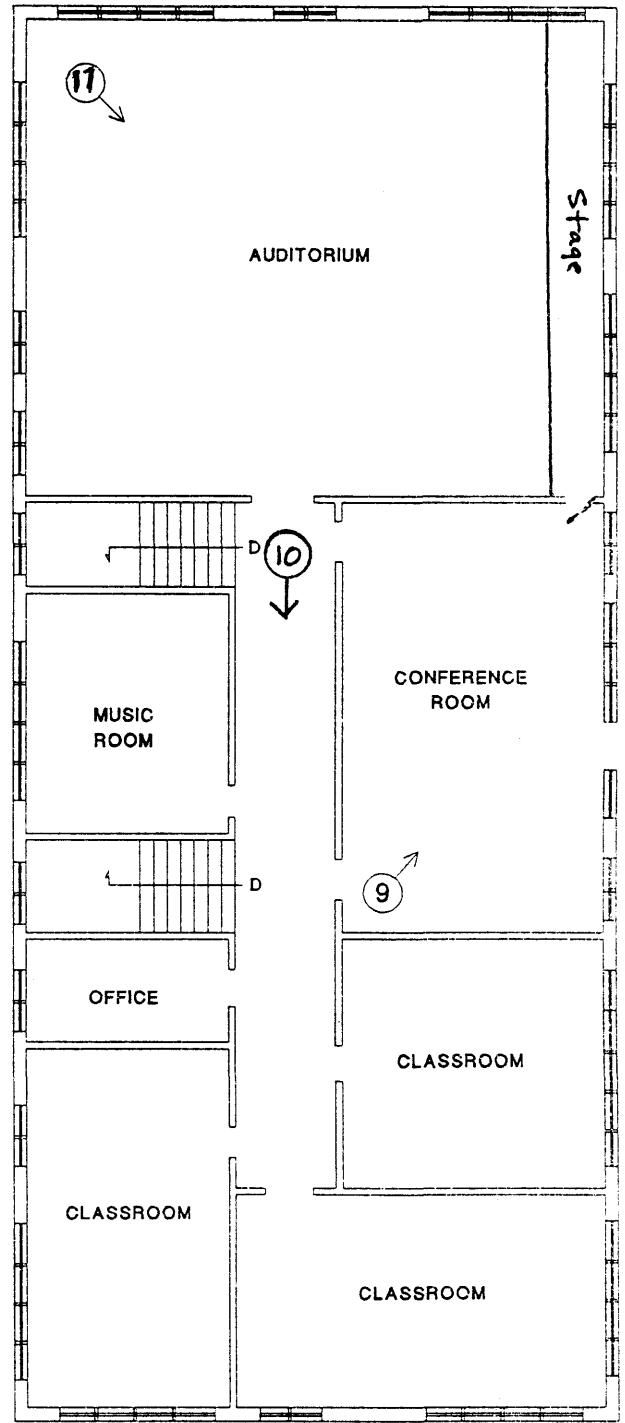
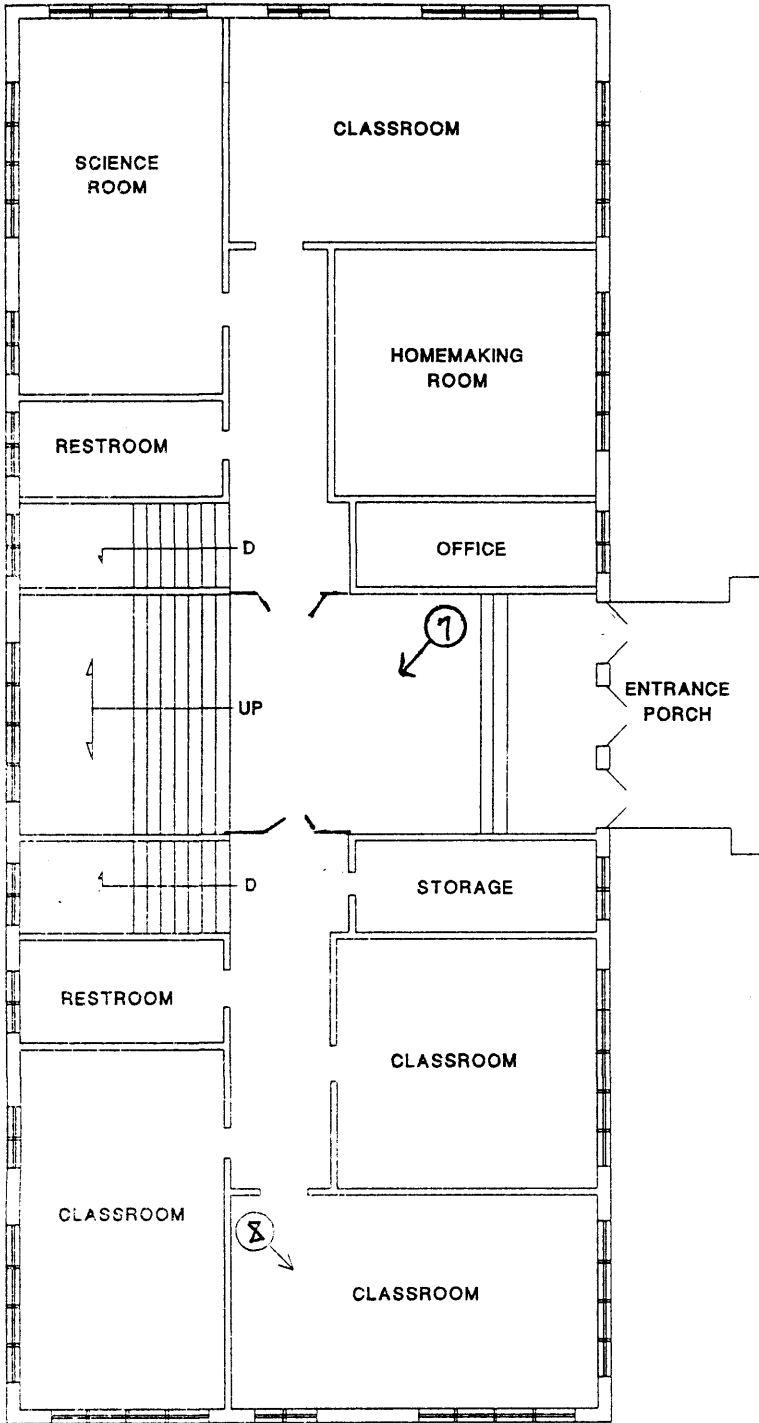




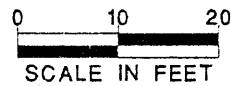
# FIRST FLOOR

PHOTO LOCATION - 

# SECOND FLOOR



FELLSMERE SCHOOL FLOOR PLANS



PREPARED BY  
HISTORIC PROPERTY ASSOCIATES  
SEPTEMBER 1995