

HOTEL

I know  
my taste.



Winston

WYNOLDS HOTEL

PLACE A SOUND  
CHRISTIAN INDIAN MISSION

A WITNESS CENTER  
CHRIST IS LORD

PARKING

PARK

ALL DRINKS  
SERVED BY THE HOUR  
400 4<sup>th</sup> AVE. GARAGE

P  
A  
R  
K



Pioneer Square Historic District Expansion

Seattle, Washington  
Elisabeth Potter  
December, 1976

APR 12 1978

King County

Washington State Parks and Recreation Comm.  
Hotel Reynolds, 406-408 4th Avenue. West  
face, from City Hall Park.

4 of 10

9 of 25



hiro's

SON  
ONE YEAR SERVICE

FURNITURE  
Always for you

HOTEL  
PARKING  
CAR PAUL

HOTEL

# Pioneer Square Historic District Expansion

Seattle, Washington  
Elisabeth Potter  
December, 1976

APR 12 1978

King County

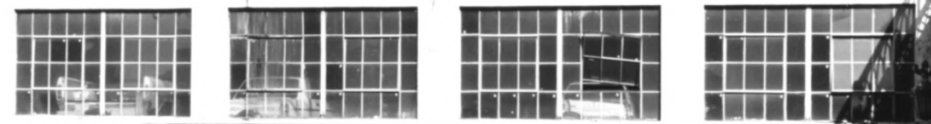
Washington State Parks and Recreation Comm.  
Looking south on 3rd Avenue South from  
Yesler Way. Frye Hotel and Car Park,  
Union Gospel Mission and other store and  
loft buildings.

10 429

5 of 10



Nothing  
beats  
taste.



PARKING

THE SWORD  
A WITNESS CENTER  
CHRIST IS LORD

P  
A  
R  
K  
I  
N  
G



Pioneer Square Historic District Expansion

Seattle, Washington

Looking northeast from Yesler Way toward  
structures 9 and 10; Terrace Street Bridge to  
right of parking garage

David M. Hansen

Office of Archaeology and Historic Preservation  
Olympia, Washington

October, 1977

OCT 31 1977 11g29

7 of 11 supplemental

King County



REYNOL  
1871

# Pioneer Square Historic District Expansion

Seattle, Washington

Looking east across City Hall Park toward properties 6 and 8; large structure in rear is not included in district.

David M. Hansen

Office of Archaeology and Historic Preservation

Olympia, Washington

October, 1977

**OCT 31 1977**

King County 12929

4 of 11 supplemental





# Pioneer Square Historic District Expansion

Seattle, Washington

Looking east across City Hall Park toward properties 9 and 10; Old Public Safety Building (National Register) visible to rear

David M. Hansen

Office of Archaeology and Historic Preservation

Olympia, Washington

October, 1977

OCT 31 1977

13929

5 of 11 supplemental

King County



# Pioneer Square Historic District Expansion

Seattle, Washington

Looking east from City Hall Park roadway toward Hotel Reynolds (9) and parking garage (10); Old Public Safety Building (National Register) to right rear. Large modern structure in rear of Hotel Reynolds is not included in district

David M. Hansen  
Office of Archaeology and Historic Preservation  
Olympia, Washington  
October, 1977

OCT 31 1977

King County

14 of 29

6 of 11 supplemental



# Pioneer Square Historic District Expansion

Seattle, Washington

Looking north up Fourth Avenue from Washington Street; Hotel Reynolds and parking garage visible beyond Yesler Way - Terrace Street Bridge. Roberts Hotel on left. Modern structure to the rear not included in district.

David M. Hansen

Office of Archaeology and Historic Preservation  
Olympia, Washington

October, 1977

OCT 31 1977

9 of 11

King County  
15 of 29



**HOTEL  
REYNOLDS**  
*Comfortable Reasonable*  
**Rooms Rates**

**Name  
of the  
Game**

**REYNOLDS  
HOTEL**

ONE  
WAY  
←

RESTAURANT

TAILS

LINE UP

# Pioneer Square Historic District Expansion

Seattle, Washington

Looking southeast down Fourth Avenue showing western facades of buildings between Jefferson and Terrace Streets.

*King County*  
*16 of 29*

David M. Hansen

Office of Archaeology and Historic Preservation  
Olympia, Washington

October, 1977  
**OCT 31 1977**

3 of 11 supplemental





Pioneer Square Historic District Expansion

Seattle, Washington

King County

Looking northwest into City Hall Park from top of structure 10; structure 4 (left) and 1 (right) visible to rear of park.

David M. Hansen

Office of Archaeology and Historic Preservation

Olympia, Washington

October, 1977

OCT 31 1977

17 2 29



# Pioneer Square Historic District Expansion

Seattle, Washington

Looking northeast at structures 43 (left) and 42 (right).

David M. Hansen

Office of Archaeology and Historic Preservation

Olympia, Washington

October, 1977

of 11 supplemental

King County

OCT 31 1977

18 of 29



# Pioneer Square Historic District Expansion

Seattle, Washington

Looking northwest at structure 42; structure 43 partially visible to the rear.

*King County*

David M. Hansen

Office of Archaeology and Historic Preservation

Olympia, Washington

October, 1977

**OCT 31 1977**

*19 9 29*

2 of 11 supplemental



Nothing  
beats  
taste.

JAPANESE CENTER  
CHRIST IS LORD

PARADE

# Pioneer Square Historic District Expansion

Seattle, Washington

Looking north up Fourth Avenue showing western facades of properties between Jefferson and Terrace Streets. Large modern structure visible to rear not included in district.

David M. Hansen

Office of Archaeology and Historic Preservation  
Olympia, Washington

October, 1977

*King County*

**OCT 31 1977**

of 11 supplemental

*20 of 29*





Pioneer Square Historic District Expansion

Seattle, Washington

*King County*

Looking southwest from district boundary between Jefferson and Terrace Streets, across property B. Frye Hotel (structure 17) visible to left in distance with Smith Tower (a component of the existing Pioneer Square-Skid Road Historic District) to the right behind structure 4.

David M. Hansen

Office of Archaeology and Historic Preservation

Olympia, Washington

October, 1977

**OCT 31 1977**

*21 of 29*

11 of 11 supplementa



# Pioneer Square Historic District Expansion

Seattle, Washington

Elisabeth Potter

December, 1976

Washington State Parks and Recreation Comm.

Looking east up Yesler Way. Old Public

Safety Building. NE corner of the dist.

7 of 10

APR 12 1978

King County

22 of 29

NO LEFT TURN

ENICK

ENICK

BASEBALL BOTTLE PALACE  
TRADE IN ALL BRANDS  
OF BOTTLES FOR  
CASH OR CIGARETTES

WICKET



Pioneer Square Historic District Expansion

Seattle, Washington

APR 12 1978

Elisabeth Potter

King County

December, 1976

Washington State Parks and Recreation Comm.

Looking SE on 3rd Ave. South from South

Washington St. Typical store and loft

buildings of the period 1900-1910.

Easterly boundary of district. 23 of 29

8070



# Pioneer Square Historic District Expansion

Seattle, Washington

APR 12 1978

Elisabeth Potter

December, 1976

Washington State Parks and Recreation Comm.

Looking NW on 4th Avenue from Yesler Way.

King County Courthouse and City Hall Park.

The latter is an internal focal point of  
district

24 of 29





Pioneer Square Historic District Expansion

King County

APR 12 1978

Seattle, Washington

Elisabeth Potter

December, 1976

25 of 29

Washington State Parks and Recreation Comm.

Looking west on Yesler Way from Terrace St.  
intersection. Prefontaine Building, Frye  
Hotel, Smith Tower. Note Gothic deck  
railing of steel bridge crossing 4th Ave.



# Pioneer Square Historic District Expansion

Seattle, Washington  
Elisabeth Potter  
December, 1976.

APR 12 1978

King County 26929

Washington State Parks and Recreation Comm.  
Looking south on 4th Ave. South from Yesler  
Way. Roberts-Grand Union Hotel, Prefon-  
taine Building, the campanile of King St.  
Station and King County Dome Stadium.



PROPERTY OF THE NATIONAL REGISTER

Pioneer Square Historic District Expansion

Seattle, Washington

Elisabeth Potter

December, 1976

Washington State Parks and Recreation Comm.

Looking NW on 3rd Ave. from City Hall Park.

Hotel Morrison and Hotel Drexel. Northerly  
boundary of the district.

*King County*  
APR 12 1978

*29929*