

United States Department of the Interior
National Park Service



806

National Register of Historic Places Registration Form

This form is for use in nominating or requesting determinations for individual properties and districts. See instructions in *How to Complete the National Register of Historic Places registration Form* (National Register Bulletin 16A). Complete each item by marking "x" in the appropriate box or by entering the information requested. If an item does not apply to the property being documented, enter "N/A" for "not applicable." For functions, architectural classification, materials, and areas of significance, enter only categories and subcategories from the instructions. Place additional entries and narrative items on continuation sheets (NPS Form 10-900a). Use a typewriter, word processor, or computer, to complete all items.

1. Name of Property

historic name Park-Elkins Historic District
other names/site number Sylvan Park

2. Location

street & number Roughly along Park and Elkins aves. between 42nd and 50th aves. NA not for publication
city or town Nashville NA vicinity
state Tennessee code TN county Davidson code 037 zip code 37209

3. State/Federal Agency Certification

As the designated authority under the National Historic Preservation Act, as amended, I hereby certify that this nomination request for determination of eligibility meets the documentation standards for registering properties in the National Register of Historic Places and meets the procedural and professional requirements set for in 36 CFR Part 60. In my opinion, the property meets does not meet the National Register criteria. I recommend that this property be considered significant nationally statewide locally. (See continuation sheet for additional comments.)

E. Patricia McIntyre, Jr. September 28, 2011
Signature of certifying official/Title Date
State Historic Preservation Officer, Tennessee Historical Commission
State or Federal agency and bureau

In my opinion, the property meets does not meet the National Register criteria. (See Continuation sheet for additional comments.)

Signature of certifying official/Title Date

State or Federal agency and bureau

4. National Park Service Certification

- I hereby certify that the property is:
- entered in the National Register.
 See continuation sheet
 - determined eligible for the National Register.
 See continuation sheet
 - determined not eligible for the National Register
 - removed from the National Register.
 - other (explain:)

Janis [Signature] 11/15/2011
Signature of the Keeper Date of Action

Park-Elkins Historic District
Name of Property

Davidson, Tennessee
County and State

5. Classification

Ownership of Property
(Check as many boxes as apply)

- private
- public-local
- public-State
- public-Federal

Category of Property
(Check only one box)

- building(s)
- district
- site
- structure
- object

Number of Resources within Property
(Do not include previously listed resources in count)

Contributing	Noncontributing	
103	78	buildings
1	2	sites
		structures
		objects
104	80	Total

Name of related multiple property listing
(Enter "N/A" if property is not part of a multiple property listing.)

N/A

Number of Contributing resources previously listed in the National Register

0

6. Function or Use

Historic Functions
(Enter categories from instructions)

DOMESTIC: Single Dwelling
HEALTH CARE: Clinic
COMMERCIAL/TRADE: Department Store
EDUCATION: School
EDUCATION: Library
RECREATION AND CULTURE: Outdoor Recreation
RELIGION: Religious Facility

Current Functions
(Enter categories from instructions)

DOMESTIC: Single Dwelling
DOMESTIC: Multiple Dwelling
EDUCATION: School
EDUCATION: Library
RECREATION AND CULTURE: Outdoor Recreation
RELIGION: Religious Facility

7. Description

Architectural Classification
(Enter categories from instructions)

Queen Anne; Bungalow/Craftsman;
OTHER: Four Square, Gabled Ell

Materials
(Enter categories from instructions)

foundation BRICK; CONCRETE
walls BRICK; Weatherboard; SYNTHETIC
roof ASPHALT; METAL
other WOOD

Narrative Description

(Describe the historic and current condition of the property on one or more continuation sheets.)

United States Department of the Interior
National Park Service

National Register of Historic Places Continuation Sheet

Section number 7 Page 1 Park-Elkins Historic District
Davidson County Tennessee

Description

The Park-Elkins Historic District is a two-street neighborhood in the larger Sylvan Park area of Nashville, Davidson County, Tennessee. The district contains 130 principal buildings along Park and Elkins avenues, between 42nd Avenue on the east and 50th Avenue on the west. There are ninety-eight contributing principal buildings and a historic park. The street layout is grid patterned, with Park Avenue platted out in 1887 and Elkins Avenue in 1890.

Historically, development in the district was primarily single family dwellings, with some being used for commercial purposes such as doctors' offices. Churches and a city school are also located in the district. Houses are built near the front of the lots and have large backyards with alley access. The majority of the houses retain their architectural integrity, although many have had modifications, such as modern siding or rear additions. Some houses have been adapted into rental property, while 4607 Elkins (#51) has been replaced with a modern brick apartment building. The 4800 block shared by Park and Elkins avenues (#123) is the location of a two story brick school, and the 4300 block of Park Avenue has been turned into the Park Avenue Baptist Church complex and parking.

Houses in the district range from one to two and one-half stories. Most homes are of frame construction with weatherboard siding, with a small number having brick siding. Foundations are stone, brick, or concrete and asphalt shingle gable roofs predominate. Most outbuildings are modern, small portable sheds, or carports, with a few permanent rental buildings along the alleyways.

The district contains many residences that exhibit Queen Anne style or influence. Variations include the two story brick residence at 4703 Park Avenue (#120) and frame style construction with Eastlake detailing such as 4209 Park Avenue (#86), with the most numerous form of house with Queen Anne detailing being a Queen Anne Cottage form, such as 4712 Elkins Avenue (#65). These houses are generally one story with pyramidal roofs, front projecting bay, wraparound porches, and two facade entrances.

The Bungalow is also a dominant form in the district. Most Bungalows are side gable with a steeply pitched roof and a massive central dormer, such as 4502 Park Avenue (#105). A smaller number of Bungalow houses have front gable construction, such as 4410 Park Avenue (#99), with bracketed eaves and porches shielding half of the facade. The typical Bungalow house has a porch with battered wood columns on brick bases. The majority of Bungalows in the district have Craftsman details seen in windows and doors. This porch style of half columns is not limited to Bungalows, but a modification seen on earlier houses such as the Queen Anne Cottage at 4300 Elkins Avenue (#15).

United States Department of the Interior
National Park Service

National Register of Historic Places Continuation Sheet

Section number 7 Page 2 Park-Elkins Historic District
Davidson County Tennessee

The most common form of house in the district is a simple Gabled Ell. Gabled Ell houses vary from simple unornamented houses such as 4603 Elkins (#47) to homes with chamfered bays and Bungalow half-column porches, such as 4500 Elkins Avenue (#33) or Queen Anne detailing, as seen in the wood and glass door at 4803 Elkins Avenue (#66).

An inventory, organized by street name, was completed within the district boundary to evaluate the cultural resources. There are 130 principal resources surveyed. The majority of the principal resources (98) are contributing. The majority of noncontributing resources are modern outbuildings located at the backs of properties.

Contributing buildings retain their original architectural integrity according to design, materials, and relationship to the neighborhood and West Nashville growth. All outbuildings are listed under the principal resource they are associated with. Styles or forms (e.g., front gable) are given when known. Numerous houses in the district contain fences or stone walls. These are noted in the district but not inventoried as contributing or noncontributing.

Inventory

Charlotte Pike

1. 4601 Charlotte Pike. Richland Park. Situated on four city blocks. The property was planned to be a natural area for West Nashville residents. Four tennis courts located on east end, playground and sand volleyball court located on west end, library centrally located, paved parking lot. East of the tennis court is a concrete block building, end gable with breezeway, painted white, concrete foundation. Used as changing and bathroom of the pool, which was south of building until it was demolished and filled with earth. The park is a contributing site (C) and the concrete building is noncontributing due to modern alterations (NC)
2. 4711 Charlotte Pike. Circa 1962. Richland Park Library. Classical Revival. Historically the Richland Park recreation building, it was changed into the public library in 1962 and remodeled in 1979. One story, rectangular plan, metal hip roof, brick siding. North façade: central cross gable bay entrance, modern metal double door entrance offset to the right of entrance bay, five multi-pane arched windows with decorative brick window hoods to left of entrance bay and three multi-pane double-hung arched windows to right of entrance bay, brick quoins. West elevation: three multi-pane double-hung arched windows with decorative brick window hoods, brick quoins. South elevation: divided into two sections by stairway into renovated addition, three double-hung arched windows with decorative brick window hoods, brick quoins, modern wood barrier by the stairs hides the library utilities from view. East elevation: central metal door, four blind arches, brick quoins. C

United States Department of the Interior
National Park Service

National Register of Historic Places Continuation Sheet

Section number 7 Page 3 Park-Elkins Historic District
Davidson County Tennessee

Elkins Avenue

3. 4200 Elkins Avenue. Side Gable. One and one-half story, vinyl siding, front gable roof with asphalt shingles, rectangular plan, six-over-six double hung windows, corner porch with rectangular columns, concrete foundation, historic building completely re-done in 2011. NC
4. 4201 Elkins Avenue. Circa 1928. Dutch Colonial Revival/Queen Anne Cottage. One and one-half stories, façade with weatherboard siding with synthetic siding on elevations, asphalt shingle gable and gambrel roof, rectangular plan with additions, brick chimney, one-over-one and six-over-six double-hung windows, gable roof dormer with windows, shed roof front porch with turned wood columns, two side porches, single leaf wood and glass door with transom, concrete foundation. C
5. 4202 Elkins Avenue. Circa 1935. Bungalow. One story, vinyl siding, asphalt shingle jerkinhead roof, rectangular plan, brick chimney, one-over-one double-hung windows, gable roof front porch with paired columns on brick bases, concrete foundation. C
6. 4203 Elkins Avenue. Circa 1926. Cross gable. One story, synthetic siding, asphalt shingle cross gable roof, two brick chimneys, irregular plan, one-over-one double-hung windows, two porches – one is screened and both have single leaf doors. C
7. 4204 Elkins Avenue. Circa 1935. Bungalow. One story, weatherboard siding, asphalt shingle side gable roof, rectangular plan, chimney, one-over-one double-hung windows, central gable front porch with rectangular columns, single leaf door, concrete block foundation. C
8. 4205 Elkins Avenue. Circa 1920. Bungalow. One and one-half story, synthetic siding, asphalt shingle side gable roof, rectangular plan, brick chimney, four-over-one double-hung windows, large gable front dormer with one-over-one double-hung windows, knee braces, newer gable front porch with metal columns on brick bases (porch may have extended over the entire façade historically), single leaf door with Craftsman sidelights, concrete block foundation. C
9. 4206 Elkins Avenue. Circa 1930. Bungalow. One and one-half story, synthetic siding, asphalt shingle side gable roof, rectangular plan, three-over-one double-hung windows, gable front porch with rectangular columns, single leaf Craftsman glass and wood door, large newer gable front dormer with new six-over-six double-hung windows, concrete block foundation, second story stairs and deck on side. C

United States Department of the Interior
National Park Service

National Register of Historic Places Continuation Sheet

Section number 7 Page 4 Park-Elkins Historic District
Davidson County Tennessee

10. 4207 Elkins Avenue. Circa 1920. Bungalow. One story, weatherboard siding, asphalt shingle side gable roof, rectangular plan, four-over-one double-hung windows, gable front porch with battered wood columns on brick bases, single-leaf door with sidelights, gable front dormer with one-over-one double-hung windows, stucco over foundation. C

11. 4208 Elkins Avenue. Circa 1935. Bungalow. One Story, weatherboard siding, asphalt shingle front gable roof, rectangular plan, three-over-one double-hung windows, gable front porch with rectangular columns, hip gable front porch with square columns, single leaf Craftsman glass and wood door, pargeted foundation. C

Modern one car garage, weatherboard siding, front gable. NC

12. 4209 Elkins Avenue. Circa 1920. Bungalow. One story, weatherboard siding, asphalt shingle side gable roof, rectangular plan, brick chimney, four-over-one double-hung windows, gable front porch with rectangular columns, gable front dormer with four light windows and knee braces, stone foundation. C

13. 4210 Elkins Avenue. Circa 1920. Queen Anne Cottage. One and one-half story, weatherboard siding, asphalt shingle hip and gable roof, irregular plan, brick chimney, one-over-one double-hung windows, hip wraparound porch with rectangular columns, Queen Anne glass and wood door, hip roof dormer with one-over-one double hung window, concrete block foundation. C

14. 4211 Elkins Avenue. Circa 1899. Gabled ell. One story, synthetic siding, asphalt shingle side gable roof with cross gable, irregular plan, one-over-one double-hung windows, bay has modern six-over-six double-hung windows with fanlight, hip metal roof wraparound porch with rectangular columns, single-leaf French door with transom light, concrete block foundation. Combination of new siding and inappropriate replacement façade window make the house NC.

Modern one car garage, weatherboard siding, front gable, concrete foundation. NC

15. 4300 Elkins Avenue. Circa 1910. Queen Anne Cottage. One and one-half story, weatherboard siding, asphalt shingle hip and gable roof, irregular plan, two brick chimneys, bay window with diamond pane transom, hip roof wraparound porch with circular columns on brick bases, single leaf door with transom, stucco over foundation. C

Historic retaining wall.

Modern shed, weatherboard siding, asphalt covered side gable roof. NC

United States Department of the Interior
National Park Service

National Register of Historic Places Continuation Sheet

Section number 7 Page 5 Park-Elkins Historic District
Davidson County Tennessee

16. 4301 Elkins Avenue. Circa 1890. Queen Anne Cottage. One story, synthetic siding, asphalt shingle hip and gable roof, irregular plan, brick chimney, single pane window with transom, hip wraparound porch with replacement circular columns on brick bases, two single leaf doors with transoms, concrete block foundation. Altered but still retains basic architectural character. C

Modern (1974) one story rental building, weatherboard siding, front gable, concrete foundation. NC

17. 4302 Elkins Avenue. Circa 1935. Side Gable. One story, synthetic siding, asphalt shingle side gable roof, rectangular plan, three-over-one double hung windows, side gable front porch with rectangular columns, decorative glazed single panel door, concrete block foundation. Altered but still retains basic architectural character. C

Historic retaining wall

18. 4303 Elkins Avenue. Circa 1921. Bungalow. One and one-half story, drop/novelty siding, asphalt shingle side gable roof, rectangular plan, brick chimney, four-over-one double-hung windows, gable front dormer with one-over-one windows and knee braces, shed roof front porch with battered columns on brick bases, single leaf wood and French door and sidelights, concrete block foundation. C

Modern shed, weatherboard siding, side gable. NC

19. 4305 Elkins Avenue. Circa 1921. Bungalow. One and one-half story, weatherboard siding, asphalt shingle side gable roof, rectangular plan, eight-over-one double hung windows, front gable porch with battered columns on brick bases, front gable dormer with one-over-one double-hung windows, knee braces, single leaf French door with sidelights, concrete block foundation. C

20. 4307 Elkins Avenue. Circa 1910. Queen Anne Cottage with modifications. One and one-half story, weatherboard siding, asphalt shingle side gable roof, irregular plan, bay window with Queen Anne transom, two front gable dormers with single leaf doors which access to balcony, balcony with balustrade, flat roof full porch with circular columns, single leaf door with diamond pane transom, concrete block foundation. Second story porch and doors alter the architectural character of the house. NC

21. 4311 Elkins Avenue. Circa 1920. Queen Anne Cottage. One story, weatherboard siding, asphalt shingle hip and gable roof, irregular plan, two brick chimneys, one-over-one

United States Department of the Interior
National Park Service

National Register of Historic Places Continuation Sheet

Section number 7 Page 6 Park-Elkins Historic District
Davidson County Tennessee

double-hung windows, projecting bay with fishscale siding, hip roof front porch with rectangular columns, single leaf door and one single leaf Craftsman glass and wood door, brick foundation. C

22. 4400 Elkins Avenue. Circa 1910. Queen Anne Cottage. One Story, synthetic siding, asphalt shingle front gable roof, L-plan, three brick chimneys, one-over-one double-hung windows, shed roof dormer with triple light windows, front gable porch with rectangular columns, single leaf wood door with transom, concrete block foundation. C

Modern shed, wood siding, asphalt covered gable roof. NC

23. 4401 Elkins Avenue. Circa 1935. Side Gable. One Story, weatherboard siding, asphalt shingle side gable roof, rectangular plan, one-over-one double-hung window, shed roof porch with rectangular columns, single leaf Craftsman glass and wood door with sidelights, brick foundation. C

24. 4403 Elkins Avenue. Circa 1926. Queen Anne Cottage. One Story, weatherboard siding, metal hip roof with cross gable, irregular plan, two-over-one double hung windows, framing and shutters appear removed from front bay window, hip roof wraparound porch with rectangular columns, single leaf and glass door with transom, stone foundation. C

Modern two car garage, concrete block siding, asphalt covered gable roof. NC

Brick and metal fence.

25. 4405 Elkins Avenue. Circa 1920. Queen Anne Cottage. One story, weatherboard siding, asphalt shingle front gable roof, rectangular plan, one-over-one double-hung windows, corner porch with turned wood columns, single leaf door with transom, concrete block foundation. C

Modern shed, wood siding, metal gable roof. NC

Wood fence.

26. 4406 Elkins Avenue. Circa 1920. Side Gable. One story, synthetic siding, asphalt shingle side gable roof, one-over-one double-hung windows, gable porch with rectangle columns, failing gutter on porch, single leaf wood and glass door, part of front porch enclosed, concrete block foundation. Siding and porch enclosure make the house NC.

Mid-twentieth century shed, wood siding, asphalt covered gable roof, concrete block foundation. C

United States Department of the Interior
National Park Service

National Register of Historic Places Continuation Sheet

Section number 7 Page 7 Park-Elkins Historic District
Davidson County Tennessee

27. 4407 Elkins Avenue. Circa 1894. Queen Anne Cottage. One story, weatherboard siding, asphalt shingle front gable roof, irregular plan, two brick chimneys, one-over-one windows with faux shutters, hip roof side porch with rectangular columns, two doors, concrete block foundation. C

Modern (1994) garage, weatherboard siding, asphalt covered gable roof, concrete foundation. NC

28. 4408 Elkins Avenue. Circa 1925. Queen Anne Cottage. One Story, weatherboard siding, asphalt shingle hip and gable roof, L-plan with additions, aluminum one-over-one double-hung windows with three-over-one windows on the porch, corner porch with turned wood columns, single leaf wood and glass door, concrete block foundation. C

29. 4409 Elkins Avenue. Circa 1925. Bungalow. One story, synthetic siding, asphalt shingle front gable roof, irregular plan, one brick chimney, carport addition in rear, paired one-over-one windows with shutter, large modern bay window in projecting bay, gable roof one-half porch with battered columns on brick bases, wheel chair ramp addition, Craftsman door, concrete brick foundation. Siding and façade window make the house. NC

Modern garage, wood siding, asphalt covered roof, concrete foundation. NC

30. 4410 Elkins Avenue. Circa 1920. Queen Anne Cottage. One story, synthetic siding, asphalt shingle side gable roof, irregular plan, brick chimney, modern one-over-one double-hung windows, gable corner porch, single leaf wood and glass door, concrete block foundation. Siding and windows make the house NC.

31. 4412 Elkins Avenue. Circa 1920. Gabled ell. One Story, synthetic siding, asphalt shingle side gable roof, irregular plan, brick chimney, one-over-one double-hung windows, corner porch with modern sliding glass doors, single leaf door, concrete block foundation. Siding and sliding door on façade make the house. NC

Modern shed, wood siding, asphalt covered mansard roof, concrete block foundation. NC

32. 4413 Elkins Avenue. Circa 1925. Pyramidal Roof Cottage. One and one-half story, weatherboard siding, asphalt shingle pyramidal roof, rectangular plan with addition in rear right, one-over-one double-hung side windows, large central hip roof dormer with paired one-over-one double-hung windows, full porch with square columns, two single leaf and glass doors with sidelights and transoms, concrete block foundation. C

Mid-twentieth century shed, wood siding, asphalt covered gable roof. C

United States Department of the Interior
National Park Service

National Register of Historic Places Continuation Sheet

Section number 7 Page 8 Park-Elkins Historic District
Davidson County Tennessee

33. 4500 Elkins Avenue. Circa 1901. Gabled ell. One story, metal siding, asphalt shingle side gable roof, irregular plan, brick chimney, one-over-one double-hung windows, chamfered bay, metal shed roof porch with battered columns on stone bases, single leaf door with transom, concrete foundation. C

Modern two car garage, asphalt covered gable roof, concrete block foundation. NC

34. 4501 Elkins Avenue. Circa 1925. Bungalow. One story, weatherboard siding, asphalt shingle side gable roof, rectangular plan, sixteen-over-one double-hung windows, shed roof dormer with paired windows, recessed porch, single leaf Craftsman glass and wood door, concrete block foundation. C

35. 4502 Elkins Avenue. Circa 1920. Pyramidal Roof Cottage. One story, synthetic siding, asphalt shingle pyramidal roof, irregular plan, Queen Anne double-hung windows, hip roof dormer with paired windows, flat metal roof full porch with dentil molding, glass door with transom, concrete block foundation. C

Modern one car garage in rear, asphalt shingle front gable, wood siding, concrete block foundation. NC

36. 4503 Elkins Avenue. Circa 1928. Side Gable with Bungalow porch. One story, weatherboard siding, asphalt shingle side gable roof, rectangular plan, one brick chimney, paired three-over-one double-hung windows, front gable porch with rectangular columns with outside columns on brick bases and inside columns going to the floor, carport addition with circular columns added to left side of porch, single leaf French glass door, brick foundation. C

37. 4504 Elkins Avenue. Circa 1920. Gabled ell. One story, weatherboard siding, asphalt shingle side gable roof, irregular plan, two brick chimneys, one-over-one double-hung windows, corner porch with Corinthian columns, single leaf and glass door with transom, concrete block foundation. C

Modern shed, wood siding, metal gable roof. NC

38. 4505 Elkins Avenue. Circa 1920. Gabled ell. One story, wood siding, asphalt shingle side gable roof, irregular plan, two brick end chimneys, one-over-one double-hung windows, front bay window with transom, left side gable roof carport addition, one-half porch with rectangular columns and one battered post on stone base, single leaf and glass door with transom, stone foundation. C

United States Department of the Interior
National Park Service

National Register of Historic Places Continuation Sheet

Section number 7 Page 9 Park-Elkins Historic District
Davidson County Tennessee

39. 4506 Elkins Avenue. Circa 1920. Bungalow. One Story, weatherboard siding, asphalt shingle side gable roof, rectangular plan, one brick chimney, arched dormers with attic vents, paired three-over-one double-hung windows, gable front porch with battered columns on brick bases, single leaf Craftsman glass and wood door with sidelights, concrete block foundation. C

Modern shed, wood siding, metal shed roof, concrete block foundation. NC

40. 4507 Elkins Avenue. Circa 1925. Gabled ell. One Story, synthetic siding, asphalt shingle side gable roof, irregular plan, one brick chimney, one-over-one double-hung windows, modern front window with sidelights and transom, one-half porch with turned wood columns, modern single leaf door, stone foundation. Siding and modern window and door make this house. NC

Modern wood garage with asphalt shingle gable roof and concrete foundation. NC

41. 4508 Elkins Avenue. Circa 1920. Gable ell. One and one-half story, synthetic siding, asphalt shingle hip and gable roof, irregular plan, one-over-one double-hung windows, front gable dormer, three-quarter porch with end columns on brick bases, single leaf door with transom, concrete block foundation. C

Modern shed, wood siding, metal shed roof. NC

42. 4509 Elkins Avenue. Circa 1906. Bungalow. One story, synthetic siding, asphalt shingle front gable roof, rectangular plan, two brick chimneys, tripled one-over-one double hung window, knee braces, front gable full porch, single leaf and glass door with sidelights, concrete block foundation. C

Modern wood shed with asphalt covered gable roof. NC

43. 4510 Elkins Avenue. Circa 1920. Gabled ell. One and one-half story, synthetic siding, asphalt shingle side gable roof, irregular plan, one brick chimney, three-over-one double-hung windows, hip roof wraparound porch, cast stone foundation. C

Modern concrete block shed with asphalt roof. NC

44. 4511 Elkins Avenue. Circa 1920. Four Square. Two story, weatherboard siding, asphalt shingle hip roof, rectangular plan, one brick chimney, Queen Anne double-hung windows, hip roof dormers, full porch, single leaf door with sidelights and transom, foundation not visual. C

United States Department of the Interior
National Park Service

National Register of Historic Places Continuation Sheet

Section number 7 Page 10 Park-Elkins Historic District
Davidson County Tennessee

Modern concrete block building, metal gable roof. NC

45. 4600 Elkins Avenue. Circa 1905, Queen Anne Cottage. One and one-half story, weatherboard siding, asphalt shingle pyramidal roof, irregular plan, one brick chimney, one-over-one double-hung window with diamond pane transom, hip roof dormer, wide eaves and one-over-one double-hung windows, wraparound porch with pediment and circular columns on brick bases, dentil molding, single leaf and glass door with diamond pane transom, brick foundation. C
46. 4601 Elkins Avenue. Circa 1958. Ranch. One story, brick siding, asphalt shingle hip roof, L-plan, six-over-six double-hung windows, single leaf door, concrete block foundation. Within the time frame of district but out of character with other houses in the district. NC
47. 4603 Elkins Avenue. Circa 1930. Gabled ell. One story, weatherboard siding, asphalt shingle side gable roof, irregular plan, one-over-one double-hung windows with shutters, half porch with rectangular columns, single leaf glass and wood door, brick foundation. C
48. 4604 Elkins Avenue. Circa 1915. Four Square. Two story, weatherboard siding, asphalt shingle hip roof, rectangular plan, one brick chimney, multi-over-one double-hung windows, hip roof dormer with one-over-one double-hung window and Queen Anne sidelights (Palladian like), porch with battered columns on stone bases, single leaf glass and wood door with transom, stone foundation. C

Modern apartment, weatherboard siding, asphalt shingle pitched roof, rear door, two windows. NC

49. 4605 Elkins Avenue. Circa 1932. Gabled ell. One story, synthetic siding, asphalt shingle side gable roof with front cross gable, two brick chimneys, one-over-one double-hung window, permanently enclosed porch with skylight, single leaf glass and wood door with sidelights, concrete block foundation. NC

Modern one story apartment, particle board siding, asphalt shingle pitched roof, north facing porch. NC

50. 4606 Elkins Avenue. Circa 1920. Queen Anne Cottage. One and one-half story, synthetic siding, asphalt shingle hip and gable roof, irregular plan, one brick chimney, one-over-one double-hung windows, multi-over-one double hung window in front gable, hip roof dormer with paired one-over-one double-hung windows, metal roof wraparound porch, two glass and wood doors, concrete block foundation. NC

Modern two car garage, concrete block siding, asphalt shingle roof. NC

United States Department of the Interior
National Park Service

National Register of Historic Places Continuation Sheet

Section number 7 Page 11 Park-Elkins Historic District
Davidson County Tennessee

51. 4607 Elkins Avenue. Circa 1985. Side Gable. Two story, brick siding, asphalt shingle side gable roof, dentil molding, rectangular plan, one-over-one double-hung windows with shutters, front gable one-quarter porch, two single leaf doors, brick foundation. NC

52. 4608 Elkins Avenue. Circa 1928. Bungalow. One and one-half story, synthetic siding, asphalt shingle side gable roof, rectangular plan, one brick end chimney, paired nine-over-one double-hung windows, front gable dormer with windows, full porch with battered columns on brick bases, single leaf door, stone foundation. C

Modern one car garage, concrete block, flat roof. NC

53. 4609 Elkins Avenue. Circa 1910. Queen Anne Cottage. One story, weatherboard siding, asphalt shingle pyramidal roof with front gable, irregular plan, one brick chimney, one-over-one double-hung windows, front gable Palladian window, wraparound porch with fluted rectangular columns, single leaf glass and wood door with transom, stone foundation. C

54. 4610 Elkins Avenue. Circa 1929. Bungalow. One and one-half story, brick siding, asphalt shingle side gable roof, rectangular plan, one brick end chimney, tripled three-over-one double-hung windows, front gable dormer with three-over-one double-hung windows, front gable roof half porch with brick columns and knee braces, single leaf Craftsman glass and wood door with sidelights, brick foundation. C

Modern two story, two car garage with upstairs apartment, concrete block siding and flat roof. NC

55. 4611 Elkins Avenue. Circa 1910. Queen Anne Cottage. One story, weatherboard siding, pyramidal roof with front return gable, irregular plan, two brick chimneys, front gable window with Queen Anne transom, corner wraparound porch with rectangular columns, single leaf glass and wood doors with transoms, concrete block foundation. C

55A. Split lot. Address is actually 306 47th Avenue. Circa 1930. Bungalow. One story, synthetic siding, asphalt shingle gable roof, shed roof wraparound porch, brick chimney on façade. C

56. 4700 Elkins Avenue. Circa 1890. Queen Anne. Two story, weatherboard siding, asphalt shingle cross gable roof, irregular plan, one stone chimney, three-over-one double-hung windows, rectangular tower with finial along with fishscale shingles and siding above one-over-one double-hung window with shutters, fishscale siding in gable field, full wraparound metal roof porch with wood turned columns, single leaf door with transom, stone foundation.

United States Department of the Interior
National Park Service

National Register of Historic Places Continuation Sheet

Section number 7 Page 12 Park-Elkins Historic District
Davidson County Tennessee

Moved within the period of significance from original location in 4800 block of Park Avenue.
C

Modern wood shed with asphalt shingle gable roof. NC

57. 4701 Elkins Avenue. Circa 1930. Bungalow. One and one-half story, stone siding, asphalt shingle side gable roof, irregular plan, one stone end chimney, paired three-over-one double-hung windows, front gable dormer with paired three-over-one double-hung windows, rear addition, front gable three-quarter porch with battered columns on stone bases, single leaf Craftsman glass and wood door, stone foundation. C

Modern wood siding garage, asphalt shingle gable roof, concrete foundation. NC

58. 4705 Elkins Avenue. Circa 1945. Side Gable. One and one-half story, brick siding, asphalt shingle side gable roof, L-plan, brick end chimney, three-over-one double-hung windows, front gable dormer, half porch with small stoop front gable with cast metal columns on brick bases, wood door with decorative light, stone foundation. Large attached garage with apartments on second floor, concrete block siding and foundation. Addition makes house NC

59. 4706 Elkins Avenue. Circa 1945. Four Square with Colonial Revival influences. Two story, weatherboard siding, asphalt shingle hip roof, rectangular plan, eight-over-eight and six-over-six double-hung windows with shutters, flat roof stoop with pilasters, single leaf Craftsman glass and wood door, concrete block foundation. C

60. 4707 Elkins Avenue. Circa 1940. Side Gable. One story, weatherboard siding, asphalt shingle side gable roof, rectangular plan, brick end chimney, six-over-one double-hung windows, front gable dormer, front gable three-quarters porch with battered columns on brick bases, single leaf Craftsman glass and wood door with sidelights, concrete block foundation. C

61. 4708 Elkins Avenue. Circa 1965. Side Gable. Two story, brick siding, asphalt shingle side gable roof, rectangular plan, one-over-one double-hung windows, octagonal light, corner stoop, panel door, brick foundation. NC

Modern garage with second story apartments, asphalt shingle hip roof, concrete block siding and foundation. NC

62. 4709 Elkins Avenue. Circa 1935. No Style. One and one-half story, synthetic siding, asphalt shingle hip roof, L-plan, one brick chimney, one-over-one double-hung windows,

United States Department of the Interior
National Park Service

National Register of Historic Places Continuation Sheet

Section number 7 Page 13 Park-Elkins Historic District
Davidson County Tennessee

modern/added shed roof dormer, hip roof full porch, single leaf door, brick foundation. Façade dormer makes this house NC.

Modern shed, metal siding, metal gable roof, concrete foundation. NC

63. 4710 Elkins Avenue. Circa 1917. Bungalow. One and one-half story, weatherboard siding, asphalt shingle hip roof, rectangular plan, one brick chimney, one-over-one double-hung windows, hip roof dormer, full roof porch with fluted rectangular columns, single leaf door with transom, concrete block foundation. C

64. 4711 Elkins Avenue. Circa 1899. Queen Anne Cottage. One and one-half story, weatherboard siding, asphalt shingle pyramidal roof with cross gables, irregular plan, three brick chimneys, one-over-one double-hung windows, front gable dormer, wraparound porch with dentil molding and pediment, two doors with transom, one door without transom, brick foundation. C

Modern two car garage, weatherboard siding, asphalt shingle gable roof, concrete foundation. NC

65. 4712 Elkins Avenue. Circa 1890. Queen Anne Cottage. One and one-half story, brick siding, asphalt shingle pyramidal roof with cross gables, irregular plan, two brick chimneys, Queen Anne Palladian window, pediment dormer, front gable pediment, wraparound porch with dentil molding, single leaf and glass door with transom, stone foundation. C

66. 4803 Elkins Avenue. Circa 1935. Gabled ell. One story, weatherboard siding, asphalt shingle side gable roof with cross gable, irregular plan, two brick chimneys, Queen Anne façade window, applied modern Queen Anne woodwork, half porch with circular columns, single leaf wood door with window and transom, foundation not visible. C

66A. Split lot. Address is actually 307 48th Avenue. Circa 1956 garage, later converted to house. One house, weatherboard siding, asphalt shingle gable roof, chimney, paired one-over-one double-hung windows, French doors. NC

67. 4805 Elkins Avenue. Circa 1920. Queen Anne influences. One and one-half story, synthetic siding, asphalt shingle front gable roof, irregular plan, one-over-one double-hung windows with shutters, gable dormers, modern wraparound metal roof porch, single leaf French door with three-over-one double-hung flanking windows, concrete block foundation. Porch and siding make this house. NC

Modern one car garage, vinyl siding, asphalt shingle roof. NC

United States Department of the Interior
National Park Service

National Register of Historic Places Continuation Sheet

Section number 7 Page 14 Park-Elkins Historic District
Davidson County Tennessee

68. 4807 Elkins Avenue. Circa 1930. Queen Anne Cottage. One story, weatherboard siding, asphalt shingle pyramidal and hip roof, irregular plan, one brick chimney, casement windows with transom, wraparound porch with circular columns, single leaf wood door with window and transom, concrete block foundation. C

Modern two car garage, one story, vinyl siding, asphalt shingle pitched roof. NC

69. 4809 Elkins Avenue. Circa 1917. Side Gable/Bungalow. One and one-half story, weatherboard siding, asphalt shingle side gable roof, rectangular plan, one-over-one double-hung windows, gable roof dormer with one-over-one double-hung windows, full porch with fluted rectangular columns, single leaf glass door with sidelights and transom, concrete block foundation. C

Modern two car garage, one story, vinyl siding, asphalt shingle pitched roof. NC

70. 4811 Elkins Avenue. Circa 1925. Pyramidal Roof Cottage. One story, synthetic siding, asphalt shingle pyramidal roof, rectangular plan, two brick chimneys, three-over-one double-hung windows, full porch with fluted rectangular columns, single leaf and glass, foundation not visible. C

Circa 1930 garage/storage building, asphalt shingle gable roof, wood siding, one story. C

71. 4900 Elkins Avenue. Circa 1920. Four Square. Two story, weatherboard siding, asphalt shingle hip roof, irregular plan, two brick chimneys, one-over-one double-hung windows, wraparound porch with wood columns on brick bases, single leaf and glass door with sidelights and transom, single leaf wood door, concrete block foundation. C

72. 4901 Elkins Avenue. Circa 1935. Side Gable/Bungalow. One story, weatherboard siding, asphalt shingle side gable roof, L-plan, one brick chimney, one-over-one double-hung windows, front gable one-half porch with battered columns on brick bases, single leaf French door, stone foundation. C

73. 4902 Elkins Avenue. Circa 1899. Queen Anne Cottage. One story, weatherboard siding, asphalt shingle hip and gable roof, irregular plan, one brick chimney, one-over-one double-hung windows, front bay fixed window with transom, single leaf and glass door with Craftsman sidelights and transom, single leaf side door, stone foundation. C

74. 4903 Elkins Avenue. Circa 1938. English Cottage Revival with Colonial Revival details. One and one-half story, brick siding, asphalt shingle side gable roof, rectangular plan, one brick chimney, modern eight-over-eight double-hung windows with faux shutters, double

United States Department of the Interior
National Park Service

National Register of Historic Places Continuation Sheet

Section number 7 Page 15 Park-Elkins Historic District
Davidson County Tennessee

gable dormer with modern eight-over-eight double-hung windows and weatherboard siding, front gable stoop, single lead door, stone foundation. C

Circa 1940 shed, one story, wood siding, asphalt shingle gable roof. C

75. 4904 Elkins Avenue. Circa 1920. Four Square. Two story, weatherboard siding, asphalt shingle hip roof, rectangular plan, one brick chimney, one-over-one double-hung windows, hip roof full porch, single leaf French door with sidelights, concrete block foundation. C

76. 4905 Elkins Avenue. Circa 1923. Bungalow. One and one-half story, synthetic siding, asphalt shingle side gable roof, rectangular plan, two brick chimneys, paired four-over-one double-hung windows, shed dormer with paired one-over-one double-hung windows, three-quarter porch with battered columns on brick bases, single leaf wood door, concrete foundation. C

77. 4906 Elkins Avenue. Circa 1920. Pyramidal Roof Cottage. One and one-half story, vinyl siding, asphalt shingle pyramidal roof, rectangular plan, 3 brick chimneys, one-over-one double-hung windows, hip roof dormer with paired one-over-one double-hung windows, full porch with Doric columns, stair stepped window wood door, concrete foundation. C

Modern (1998) one car garage, one story, vinyl siding, shingle roof. NC

78. 4907 Elkins Avenue. Circa 1930. Bungalow. One and one-half story, synthetic siding, asphalt shingle hip roof, rectangular plan, one brick right end chimney, paired three-over-one double-hung windows with faux shutters, gable dormers, attached carport, full porch with projecting front gable with four-part window and battered columns on brick bases, cast metal supports on brick bases, single leaf Craftsman glass and wood door, brick foundation. C

Circa 1930 garage, one story, wood siding, rolled asphalt covered pitched roof. C

79. 4909 Elkins Avenue. Circa 1935. Side Gable. One story, synthetic siding, asphalt shingle side gable roof, rectangular plan, one brick right end chimney, paired three-over-one double-hung windows, front gable full porch with battered columns on brick bases, single leaf French door, brick foundation. C

80. 4910 Elkins Avenue. Circa 1899. Queen Anne Cottage. One and one-half story, weatherboard siding, asphalt shingle pyramidal roof, irregular plan, two brick chimneys, one-over-one double-hung windows, hip roof dormer with paired over-one-over double-hung windows, wraparound porch, single leaf wood and glass door, with transom, brick foundation. C

United States Department of the Interior
National Park Service

National Register of Historic Places Continuation Sheet

Section number 7 Page 16 Park-Elkins Historic District
Davidson County Tennessee

81. 4911 Elkins Avenue. Side Gable/Bungalow. One story, weatherboard siding, asphalt shingle side gable roof, irregular plan, one brick right end chimney, paired three-over-one double-hung windows with faux shutters, three-quarter front gable porch on battered columns on brick bases, single leaf French door, brick foundation. C

Park Avenue

82. 4200 Park Avenue. Circa 1899. Four Square with Free Classic details. Two stories, brick, asphalt shingle bell cast (hip) roof, rectangular plan with rear addition, paired one-over-one double-hung windows under segmental arches, porch with low pitch hip roof with paired wood columns on stone bases, single leaf entry with transom and sidelights, small dormer at façade, stone foundation. C

Modern concrete block garage with office above, asphalt shingle hip roof. NC

83. 4202 Park Avenue. Circa 1900. Bungalow form. One and one-half stories, modern stucco façade with shingle siding on elevations, asphalt shingle side gable roof, rectangular plan, three one-over-one double-hung windows in gable front dormer, modern fixed windows, integral front porch with rectangular brick columns, two single leaf modern doors, concrete block foundation duplex. NC

84. 4204 Park Avenue. Circa 1900. Bungalow with Queen Anne details. One and one-half stories, weatherboard siding, asphalt shingle side gable roof, irregular plan, paired one-over-one double-hung windows, hip roof dormer with paired one-over-one double-hung windows, integral porch with paired wood columns and wood floor, double-leaf wood and glass door with transom, two tall brick chimneys, concrete block foundation. C

Modern wood shed with asphalt shingle Mansard roof. NC

85. 4206 Park Avenue. Circa 1950. Side gable form. One story, synthetic siding, asphalt shingle side gable roof, irregular plan, one-over-one double-hung windows with aluminum awnings, stoop porch, single leaf entry, concrete block foundation. NC

86. 4209 Park Avenue. Circa 1910. Queen Anne. Two stories, weatherboard siding, asphalt shingle hip roof, irregular plan with addition, paired and tripled one-over-one double-hung windows with decorative sawn wood hood, canted first story window, double-leaf glass and wood entry with transom, wraparound porch with turned wood columns and spindle wood curtain below porch roof, stone foundation. C

Historic stone steps and curb.

United States Department of the Interior
National Park Service

National Register of Historic Places Continuation Sheet

Section number 7 Page 17 Park-Elkins Historic District
Davidson County Tennessee

87. 4210 Park Avenue. Circa 1901. Gabled ell/Queen Anne details. Two stories, weatherboard siding, asphalt shingle hip and gable roof, rectangular plan, two brick chimneys, one-over-one double-hung windows with decorative wood hood, corner porch with wood Doric columns, single leaf glass and wood door with transom light, brick foundation. C

88. 4211 Park Avenue. Circa 1900. Queen Anne Cottage. One story, vinyl siding, asphalt shingle hip and gable roof, irregular plan with addition, two brick chimneys, one-over-one double-hung windows, Queen Anne window on façade, wraparound porch with metal columns, single leaf door with transom light, pargeted concrete foundation. New windows and siding make this. NC

Historic curb and sidewalk.

89. 4300 Charlotte Avenue. Park Avenue Baptist Church. Gothic Revival influence. Circa 1909. Fronts 44th Avenue. One and two stories, brick construction, mansard roof, central cross gable, single pane casement windows with stone crowns, gothic revival archway door right of cross gable, double panel wood door with gothic windows above the door, hexagonal plan, stone foundation.

Sadler Auditorium addition, fronts 44th Avenue (west), connected to older church by addition at northeast corner of auditorium and east side of older church. Circa 1926. One story, brick siding, flat roof, multi-pane stain glass windows, three pointed archways on stone bases that extend past what appear the second story windows, modern double doors at the base of each archway, stone foundation. South elevation: Three central two-story pointed arch multi-pane stain glass windows, six multi-pane stained glass windows, five single pane casement windows, single panel glazed door with metal stairs and handicap access ramp.

Robert A. Mowrey Education Building addition east of auditorium and old church, connected at same section that connects older church and Sadler Auditorium. Two story, brick siding, flat roof, single pane casement windows, brick belt course between first and second floors. Breezeway connects education building with Cross Point Community Church. C

4308 Elkins Avenue. Playground. NC

4312 Elkins Avenue. Parking lot. NC

90. 4400 Park Avenue. Circa 1961. Ranch. One story, brick siding, asphalt shingle hip roof, rectangular plan, brick chimney, tri-part corner windows and one-over-one double-hung

United States Department of the Interior
National Park Service

National Register of Historic Places Continuation Sheet

Section number 7 Page 18 Park-Elkins Historic District
Davidson County Tennessee

windows, stoop front porch with metal awning, brick foundation, altered entry and addition.
NC

Front gable storage building, concrete block siding, concrete foundation, asphalt shingles
NC

91. 4402 Park Avenue. Circa 1982. Ranch. One story, synthetic siding, asphalt shingle side gable roof, rectangular plan, six-over-six double-hung windows, gable front porch, concrete foundation. NC

92. 4403 Park Avenue. Circa 1915. Bungalow. One and one-half stories, brick siding, asphalt shingle side gable roof, rectangular plan with porte cochere, brick chimney, large gable roof dormer with shingles and tripled three-over-one double-hung windows, exposed rafter ends and small knee braces, paired and single three-over-one double-hung windows, Craftsman single-leaf glass and wood entry with sidelights, two bay porch with shingled gable front porch leads to porte cochere, concrete block foundation. C

93. 4404 Park Avenue. Circa 1920. Gabled Ell, probably historically Queen Anne Cottage. One story, synthetic siding, gable front and side gable roof, gable ell with additions, two chimneys, one-over-one double-hung windows, ocular window in gable front field, altered porch with flat roof and columns on brick bases, single-leaf wood and glass entry with transom, brick foundation. C

94. 4405 Park Avenue. Circa 1905. Queen Anne Cottage. One story, weatherboard, asphalt shingle hip and gable roof, irregular plan, one-over-one double-hung windows, front fixed light Queen Anne window, single leaf glass and wood door with transom, altered porch roof and balustrade, pargeted foundation. C

Modern shed on blocks with gable roof. NC

95. 4406 Park Avenue. House being remodeled into different style. NC

96. 4407 Park Avenue. Circa 1905. Queen Anne Cottage with bungalow porch. One story, narrow board siding, asphalt shingle hip and gable roof, irregular plan with addition, new twelve-over-twelve double-hung window in façade gable, elaborate bargeboard in front gable, one brick chimney, single-leaf glass and wood entry with transom, battered porch columns on brick bases, new curtain under porch roof, brick foundation. C

Large shed, wood, asphalt shingle gable roof. NC

United States Department of the Interior
National Park Service

National Register of Historic Places Continuation Sheet

Section number 7 Page 19 Park-Elkins Historic District
Davidson County Tennessee

97. 4408 Park Avenue. Circa 1920. English Cottage Revival. One and one-half stories, brick siding, asphalt shingle gable roof with tile coping, rectangular plan, paired one-over-one double-hung windows under segmental arches, large brick chimney with battered chimney breast, steep pitch gable front porch with brick columns and segmental arch opening and weatherboard in gable field, stone foundation. Similar to 4607 Park Avenue. C

98. 4409 Park Avenue. Circa 1909. Queen Anne Cottage. One story, weatherboard and synthetic siding, asphalt shingle gable roof with waney edged siding and vent in gable field, irregular plan, one brick chimney, one-over-one double-hung sash and Queen Anne window, wraparound porch with canted wood columns and dentil molding, concrete block foundation. C

Large modern shed. NC

99. 4410 Park Avenue. Circa 1920. Bungalow. One story, brick siding, asphalt shingle front gable roof, three-over-one paired windows, rectangular plan with porte cochere, new entry door, front porch has lower front facing gable (with shingles in gable field) than main roof and rectangular window, small knee braces, porch columns and porte cochere have battered brick columns on stone bases, stone foundation. C

Mid-twentieth century detached garage, wood, asphalt shingle gable roof. C

100. 4411 Park Avenue. Circa 1890. Queen Anne Cottage. One story, synthetic siding, asphalt shingle hip and gable roof, irregular plan, multi-light paired and single replacement windows, two single leaf entries with transoms, irregular plan, two brick chimneys, wraparound porch with wood columns, bay window, pargeted foundation. C

Modern two car garage. Concrete block, stucco, asphalt shingle gable roof. NC

101. 4412 Park Avenue. Circa 1930. Bungalow. One story, synthetic siding, asphalt shingle side jerkinhead roof, irregular plan, small side extension, paired and single one-over-one double-hung windows, central porch with jerkinhead roof, concrete block foundation. C

Modern carport. NC

102. 4414 Park Avenue. Circa 1935. Bungalow. One and one-half stories, weatherboard siding, asphalt shingle side gable roof, rectangular plan, two brick chimneys, paired four over one double-hung windows, gable front porch with battered wood columns on brick bases, single leaf wood and glass Craftsman door, stone foundation, gable front dormer with four three-over-one-double-hung windows, knee braces. C

United States Department of the Interior
National Park Service

National Register of Historic Places Continuation Sheet

Section number 7 Page 20 Park-Elkins Historic District
Davidson County Tennessee

Modern concrete block garage with asphalt shingle gable roof. NC

103. 4500 Park Avenue. Circa 1915. Bungalow. 4501 Park Avenue. One and one-half stories, brick siding, asphalt shingle gable roof, rectangular plan, one brick chimney, paired three-over-one double-hung window, three part façade window with two three-over-one double-hung windows and one four-over-one double-hung window, porch has battered wood columns on brick bases with knee braces and wood arch, weatherboard in gables, single leaf glass and wood Craftsman door with Craftsman sidelights, stone foundation. C

Modern concrete block garage with asphalt shingle gable roof. NC

104. 4501 park Avenue. Circa 1915. Pyramidal Roof Cottage. One story, synthetic siding, asphalt shingle steep pitch pyramidal roof, rectangular plan with addition, one-over-one double-hung window and fixed windows with tracery, incised half-porch with rectangular wood columns and pilaster with bases and capitals, single-leaf modern entry, brick foundation, gable front dormer with one-over-one double-hung window, brick foundation. C

105. 4502 Park Avenue. Circa 1918. Bungalow. One and one-half stories, weatherboard siding, asphalt shingle side gable roof, rectangular plan, two brick chimneys, paired three-over-one double-hung windows, shed roof porch with heavy battered columns on brick bases, single leaf French door with sidelights, brick foundation, large gable front dormer with four-part window and knee braces. C

Modern wood two car garage with asphalt shingle gable roof. NC

106. 4503 Park Avenue. Circa 1925. Bungalow. One story, brick siding, asphalt shingle side gable roof with tile coping, rectangular plan, one brick chimney, paired and tripled three-over-one double-hung windows, gable front porch with synthetic siding in gable and on porch roof, battered wood columns on brick bases, single-leaf entry, rusticated concrete block foundation. C

Wood one car garage with asphalt shingle gable roof. Built 2000. NC

107. 4505 Park Avenue. Circa 1930. Pyramidal Roof Cottage. One story, vinyl siding, asphalt shingle hip/pyramidal roof, rectangular plan, one brick chimney, paired one-over-one double-hung windows, one bay gable front porch with new columns on brick bases and concrete floor, concrete block foundation. C

108. 4507 Park Avenue. Circa 1920. Bungalow. One story, wide wood board siding, asphalt shingle gable roof, rectangular plan, one brick chimney, four vertical light-over-one double hung window, tri-part double-hung window, one bay gable front porch with new window and

United States Department of the Interior
National Park Service

National Register of Historic Places Continuation Sheet

Section number 7 Page 21 Park-Elkins Historic District
Davidson County Tennessee

shingles in gable field and paired square wood columns, dormer with one-over-one double-hung sash, knee braces, Craftsman glass and wood door with multi-pane sidelights. C

109. 4508 Park Avenue. Circa 1915. Bungalow. One story, brick siding, side gable asphalt shingle roof, rectangular plan, tri-part façade window, three gable front dormers with tripled windows, full front porch with brick columns on battered stone bases, Craftsman glass and wood door with multi-pane sidelights, stone foundation. C

110. 4510 Park Avenue. Parking lot. NC

111. 4511 Park Avenue. Circa 1910. Gabled ell. One story with second story gable added, synthetic siding, asphalt shingle gable roof, rectangular plan with addition, narrow one-over-one double hung windows, shed roof front porch with turned wood columns on brick bases, single leaf entry, concrete block foundation. NC

112. 4512 Park Avenue. Parking lot. NC

113. 4513 Park Avenue. Circa 1933. Gothic Revival. All Saints Anglican Orthodox Church (historically St. Andrews Episcopal Church). One story, stone siding, asphalt shingle gable front roof, rectangular plan with addition, stained glass windows, double-leaf Tudor arch entry door leads to vestibule, stone foundation. C

114. 4601 Park Avenue. Circa 1908. Queen Anne Cottage. One story, brick siding, asphalt shingle hip roofs, irregular plan, two brick chimneys, one-over-one double-hung windows and Queen Anne window with leaded glass, wraparound porch with hip roof and wood Doric columns, single leaf door with transom, stone foundation, hip roof dormer, façade parapet with semi-circular arch and stone trim. C

Brick carriage house, uncertain date. NC

New fence with brick columns.

115. 4603 Park Avenue. Circa 1925. Bungalow. One and one-half stories, weatherboard siding, asphalt shingle side gable roof, rectangular plan with addition on side, brick chimney, six-over-one double-hung windows, porch integral with roof and has rectangular wood columns with two on battered stone bases, concrete block foundation, gable front dormer with tri-part window, exposed rafter ends and knee braces. C

Modern front gable garage, synthetic siding, facing alley. NC

New wood fence.

United States Department of the Interior
National Park Service

National Register of Historic Places Continuation Sheet

Section number 7 Page 22 Park-Elkins Historic District
Davidson County Tennessee

116. 4605 Park Avenue. Circa 1907. Queen Anne Cottage. One story, brick siding, asphalt shingle hip and gable roofs, rectangular plan with addition, one brick chimney, one-over-one double-hung windows and Queen Anne façade window, wraparound porch with large entablature and Doric columns, two façade entries with Queen Anne wood and glass doors with transoms, stone foundation, dormer with paired windows. C

Modern concrete block shed. NC

117. 4607 Park Avenue. 1928. English Cottage Revival. One and one-half stories, brick siding, asphalt shingle cross gable roof, rectangular plan with addition, large brick façade chimney with battered chimney breast, two multi-pane casement windows with segmental arch transoms, diamond pane window in steep pitch façade gable roof and facade, narrow corner porch with heavy brick columns, stone foundation. Similar to 4408 Park Avenue. C

118. 4609 Park Avenue. Circa 1899. Queen Anne. Two stories, brick siding, asphalt shingle hip and gable roof, irregular plan, tall brick chimney, segmental arch one-over-one double-hung windows, Queen Anne façade window with leaded glass and molded brick surround, wraparound porch with Doric columns, belt course and water table, ocular window in pedimented façade gable. C

New metal fence.

119. 4701 Park Avenue. Circa 1925. Bungalow. One and one-half stories, vinyl and brick siding, asphalt shingle side gable roof, rectangular plan, one chimney, small modern windows and French doors in gable front dormer, façade porch enclosed and has three sliding glass doors. NC

Modern detached two car garage. NC

120. 4703 Park Avenue. Circa 1898. Queen Anne. Davis House. Two stories, brick, asphalt shingle hip and gable roof with gable returns and pediments, half-moon window in façade gable, one-over-one double-hung windows, some windows have segmental arch heads or are arches with keystones, molded brick trim, wraparound porch with Tuscan columns and dentils below eaves, double-leaf wood and glass door with transom, tall brick chimneys, stone foundation. C

Modern brick fence.

Modern wood shed, metal shed roof. NC

United States Department of the Interior
National Park Service

National Register of Historic Places Continuation Sheet

Section number 7 Page 23 Park-Elkins Historic District
Davidson County Tennessee

121. 4707 Park Avenue. Circa 1927. Bungalow. One story, brick and weatherboard, asphalt shingle jerkinhead roof with large jerkinhead dormer with four double-hung windows, square plan with additions, single and tripled three-over-one double-hung windows, single bay gable front porch with wood columns-over-entry with glass and wood sidelights, east part of façade enclosed with synthetic siding, stone foundation. C

Modern Garage. Wood siding, block foundation, asphalt gable roof. NC

Two wood sheds with gable roofs, one metal, one asphalt. 2 NC

122. 4711 Park Avenue. Circa 1905. Queen Anne. One and two stories, brick, asphalt shingle hip roof with hip roof dormer with tripled windows, irregular plan, multiple style double-hung windows, three-fourths porch with slender wood columns on stone bases, glass and wood entry shielded by molded brick arch, two story section projects from façade and has pyramidal roof and Queen Anne window, two tall chimneys, stone foundation. C

Modern Garage. Two car, wood siding, sheet metal gable roof. NC

123. 4801 Park Avenue. Cohn High School, Cohn Junior High School. 1929. Collegiate Gothic. Two stories with raised basement, brick with stone trim, flat roof with crenellated parapet, C-shape plan, paired replacement windows, steps lead to double-leaf entry with sidelights and Gothic arch trim, stone belt course, stone foundation. C

124. 4901 Park Avenue. Circa 1900. Chestnut Manor. Queen Anne Cottage. One story, brick, asphalt shingle hip and gable roof with exposed rafter under eaves and gable returns, rectangular plan with rear extensions and side elevation bay window, wraparound porch with round wood columns with capitals, two entries on façade, façade Queen Anne leaded glass window with decorative brick surround, multiple size windows on house, stone foundation, two brick chimneys. C

Garage. One story, weatherboard siding, asphalt shingle hip roof. Built in the 1930s and remodeled in the 1970s and 2010. NC

125. 4905 Park Avenue. Circa 1928. Pyramidal Roof Cottage. One story, Hardie board, asphalt shingle steep pitch hip roof with ridge, hip roof dormers with modern four light fixed window, dentil molding under eaves, rectangular plan with large rear garage addition, integral porch with square wood columns, modern double-leaf glass entry with transom, Queen Anne leaded hanging glass façade windows, stone foundation. C

Wood fence

United States Department of the Interior
National Park Service

National Register of Historic Places Continuation Sheet

Section number 7 Page 24 Park-Elkins Historic District
Davidson County Tennessee

126. 4907 Park Avenue. Circa 1925. Bungalow with Craftsman influence. One and one half stories, weatherboard, asphalt shingle steep pitch side gable roof, large gable front dormer with four, six-over-one double-hung windows and fish scale shingles in gable field, rectangular plan with rear extension, roof extends past façade to form full porch, porch has battered wood columns on battered stone bases, entry with sidelights and transom, paired multi-light-over-one double-hung windows on façade below porch, paired and single double-hung windows on rest of house, side elevation entry, stone foundation, brick chimney. C

Wood fence

127. 4911 Park Avenue. Circa 1915. Four Square. Two stories, weatherboard, asphalt shingle hip roof with deck, square plan with rear extensions/additions, one story full flat/hip roof porch with square Doric columns and wood floor, entry with sidelights and transom, one-over-one double-hung windows (larger on first story façade) with wood surrounds, brick foundation. C

44th Avenue

128. 320 44th Avenue. Circa 1926. Store Front. One story, brick siding, flat roof, rectangular plan, two bay windows, recessed double panel glass and wood door, concrete foundation. C

8. Statement of Significance

Applicable National Register Criteria

(Mark "x" in one or more boxes for the criteria qualifying the property for National Register listing.)

- A** Property is associated with events that have made a significant contribution to the broad patterns of our history.
- B** Property is associated with the lives of persons significant in our past.
- C** Property embodies the distinctive characteristics of a type, period, or method of construction or represents the work of a master, or possesses high artistic values, or represents a significant and distinguishable entity whose components lack individual distinction.
- D** Property has yielded, or is likely to yield, information important in prehistory or history.

Criteria Considerations N/A

(Mark "x" in all boxes that apply.)

Property is:

- A** owned by a religious institution or used for religious purposes.
- B** removed from its original location.
- C** a birthplace or grave
- D** a cemetery.
- E** a reconstructed building, object, or structure.
- F** a commemorative property
- G** less than 50 years of age or achieved significance within the past 50 years.

Areas of Significance

(Enter categories from instructions)

ARCHITECTURE
COMMUNITY PLANNING AND DEVELOPMENT

Period of Significance

1890-1962

Significant Dates

N/A

Significant Person

(complete if Criterion B is marked)

N/A

Cultural Affiliation

N/A

Architect/Builder

Waring, George E.-Planning Lyle, W. H.-Planning
Various/Unknown-Builder

Narrative Statement of Significance

(Explain the significance of the property on one or more continuation sheets.)

9. Major Bibliographical References

Bibliography

Previous documentation on file (NPS): N/A

- preliminary determination of individual listing (36 CFR 67) has been requested
- previously listed in the National Register
- Previously determined eligible by the National Register
- designated a National Historic Landmark
- recorded by Historic American Buildings Survey # _____
- recorded by Historic American Engineering Record # _____

Primary location of additional data:

- State Historic Preservation Office
- Other State Agency
- Federal Agency
- Local Government
- University
- Other

Name of repository:

United States Department of the Interior
National Park Service

National Register of Historic Places Continuation Sheet

Section number 8 Page 25 Park-Elkins Historic District
Davidson County Tennessee

Significance

The Park-Elkins Historic District, located in Nashville, Davidson County, Tennessee, is eligible for listing in the National Register of Historic Places under Criterion A as a good representation of the growth and development of suburban West Nashville in the late nineteenth to mid-twentieth century. Primarily residential, the district contains a school, two churches, and a commercial building. The district is also eligible for under Criterion C as an example of late nineteenth and early to mid-twentieth century architecture in Nashville. Queen Anne and Queen Anne Cottages predominate around the turn of the century and later houses are mainly Bungalows or the Gabled Ell form. There have been changes to properties in the district, but it retains its overall integrity. The period of significance ranges from circa 1890, soon after the streets were platted and the first houses built, to 1962 when the former park recreation building was adapted for use as the Richland Park Library.

Park-Elkins Historic District was developed as part of a larger planned community, known as West Nashville or New Town. Although the area was platted out and planned with green space and commercial development, it was really a speculative real estate development. West Nashville was an idea that dated before the Civil War, and centered on the town of Clifton, but was delayed due to the war and financial struggles of the region following the aftermath.¹ It would not be until the late 1880s before capital and power was in a position to create this new settlement. In February of 1887 a charter was filed with the state from the "Nashville Land Improvement Company."² This company would have the power to buy, subdivide, and sell land. Henry M. Pierce, native of Buffalo, New York, was founding charter member of the company and had personally bought approximately 4,000 acres, which was transferred over to the company for the creation of this "New Town."³

West Nashville, as platted by Col. George E. Waring, was designed by to have a central business district along Charlotte Avenue and residential homes to the north. Industry would be placed north of the residential homes, along the river front. The plan was to use river access, the railroad, and free lots to entice businesses to move into the area. Also incorporated into the plan was Richland Park, which was to a permanent green space for the community. Residential neighborhoods south of Park Avenue came as later developments by different land companies.

The sale of the town lots for West Nashville was a great spectacle. It is estimated that 5,000 people were in attendance the first day of sale, with cannon fire throughout the day to help celebrate.⁴ The Nashville Land Improvement Company heavily advertised this new settlement, and was working with businesses to ensure that this "New Town" would be a success. When the land

¹ Sarah Foster Kelley, *West Nashville: Its People and Environs* (Nashville: Douglas Printing, Inc. 1987), 165.

² *ibid*, 167.

³ *ibid*, 167.

⁴ *ibid*, 169.

United States Department of the Interior
National Park ServiceNational Register of Historic Places
Continuation SheetSection number 8 Page 26 Park-Elkins Historic District
Davidson County Tennessee

sale started, it was reported that over twenty companies were negotiating for land in the industrial area.⁵

The first lot to be bought in the land sale was purchased by James A Bowling.⁶ Mr. Bowling was a prominent man in the growth of West Nashville, as the owner of Bowling and Sons, a construction company that would be responsible for constructing many of the homes in the in the Charlotte and Sylvan Park additions. He was also Vice President and later President of the Sylvan Park Company, the land company responsible for expansion south of Charlotte Park. His own home was given the name "Sylvan Park" which was the name later adopted as name for the entire Charlotte and Sylvan and Park Avenue communities.⁷

To encourage residents to move into West Nashville, the land company promised to provide rail service at least three times a day between the community and downtown Nashville. The land company gave control of several miles of track to the Nashville, Chattanooga, and Saint Louis Railroad to fulfill this promise. A later agreement was made with the Nashville and West Nashville Railway to have a dummy line into the town by the end of 1888, and also to have mule trolleys to transport people throughout town.⁸ For the residents south of Charlotte, there was a small streetcar line on 46th Avenue, known as "the Dinky" which had the job of moving residents between Murphy Avenue and the main rail line on Charlotte Avenue.⁹

The first addition made to the plan of West Nashville was started in 1889, by the Charlotte Park Company. The company pushed the southern edge of development past Park Avenue, all the way to Wyoming Avenue. A large part of this growth was in response to the railroad. The Nashville Land Improvement Company had entered into agreement with Citizens Rapid Transit to improve services in West Nashville.¹⁰ This allowed more people who worked downtown to move into the suburban community, creating a greater need for housing near the main line on Charlotte Avenue.

The growth of the industrial zone along the riverfront greatly increased the number of blue collar workers in West Nashville. Lots in the original plan were being purchased and populated with small cottages. Many of the wealthier, early residents took advantage of the new Charlotte Park Addition and moved south. This created an early distinction between the north and south sides of Charlotte Avenue, with a larger number of middle class families with large homes south of Charlotte Avenue, and with more working class families with small cottages on the north side of Charlotte Avenue. Park Avenue was the southernmost street of the original plan of West Nashville.

⁵ *ibid*, 172.

⁶ *ibid*, 169.

⁷ Yvonne Eaves and Doug Eckert, *Images of America: Nashville's Sylvan Park* (Charleston: Arcadia Publishing, 2011), 53.

⁸ Sarah Foster Kelley, *West Nashville: Its People and Environs* (Nashville: Douglas Printing, Inc, 1987), 179.

⁹ Yvonne Eaves and Doug Eckert, *Images of America: Nashville's Sylvan Park* (Charleston: Arcadia Publishing, 2011), 101.

¹⁰ Sarah Foster Kelley, *West Nashville: Its People and Environs* (Nashville: Douglas Printing, Inc, 1987), 195.

United States Department of the Interior
National Park Service

National Register of Historic Places Continuation Sheet

Section number 8 Page 27 Park-Elkins Historic District
Davidson County Tennessee

It was located adjacent to Richland Park and it was one street away from the main commercial district of West Nashville and the trolley system that went into downtown Nashville. Its location was one of the reasons that Park Avenue made it a popular street for the wealthy and influential, which is why it became known as "Quality Row."¹¹

Affluent people and business owners were soon making their home on Park Avenue and in Charlotte Park. Lemuel H Davis, who was a founding figure in the growth of West Nashville as well as president of the Davis, Cockrill, Finegan Real Estate and the West Nashville Building Company, made his home at 4703 Park Avenue (#120).¹² Walter Gillenwater was a politician from East Tennessee, and later the Assistant Warden at the State Prison. Frank C. Guthrie, who lived in the Queen Anne house at 4711 Park Avenue (#122), was General Manager of the corporate branch of the Nashville Casket Company. This location was the original site of a planned Exposition Building, which was never constructed.¹³ (See map.) Allen Hardison had the house at 4901 Park Avenue (#124) constructed, though never lived there. Instead, it was used by Frank E. Gillette, who was a partner with Allen at Gillette-Hardison Grain Company.¹⁴ In 1931, this house was sold to two sisters with the last name of Bean. These sisters were career educators and members of the West Nashville community, providing a combined one hundred and twenty-five years of education service to Nashville. Another teacher, who moved to the street in 1924, was Mable Cearley. Cearley, who lived at 4707 Park Avenue (#121), taught at Cockrill School, then later at Cohn High School.¹⁵ Robinson Wrathier moved to West Nashville and later lived at 4801 Park Avenue, which now is located at 4700 Elkins Avenue (#56). During his time in West Nashville he was supervisor of the Dispatching Section of the post office,¹⁶ became part owner of Reynolds-Nicks Farm Store, and also founded Belle Meade Hardware Company.¹⁷ Frederick Schaeffer made his home at 4609 Park Avenue (#118). He was the general foreman for the Nashville, Chattanooga, and St. Louis Railroad shops.¹⁸ In the 1920s, Howard Coleman purchased the Lee Farris house (#126). He was the founder of Coleman's Sausage Company and owner of Coleman's Grocery on Charlotte Avenue. Harry Lovelace built his home in 1928 at 4607 Park Avenue (#117). He was co-owner of the Lovelace and Jackson Barber Shop.¹⁹ L. B. Martin purchased the house at 4601 Park Avenue (#114) in 1942. He worked as an Engineer for the Nashville, Chattanooga, and St. Louis Railroad for three decades.²⁰

¹¹ *ibid*, 188.

¹² *ibid*, 203.

¹³ Sarah Foster Kelley, *West Nashville: Its People and Environs* (Nashville: Douglas Printing, Inc, 1987), 188.

¹⁴ *ibid*, 213.

¹⁵ *ibid*, 334.

¹⁶ *ibid* 305.

¹⁷ Yvonne Eaves and Doug Eckert, *Images of America: Nashville's Sylvan Park* (Charleston: Arcadia Publishing, 2011), 58.

¹⁸ *ibid*, 65.

¹⁹ Sarah Foster Kelley, *West Nashville: Its People and Environs* (Nashville: Douglas Printing, Inc, 1987), 335.

²⁰ *ibid*, 337.

United States Department of the Interior
National Park Service

National Register of Historic Places Continuation Sheet

Section number 8 Page 28 Park-Elkins Historic District
Davidson County Tennessee

Park Avenue was also a very popular street for city officials to live on. Roscoe Matthews, a City Judge, made Park Avenue his home. Montgomery Lowery, a captain in the Nashville Police Department, also found his way to Park Avenue. He spent many days walking the streets of West Nashville, occasionally renting a horse.²¹ Davidson County Judge Madison Wells, lived at 4701 Park Avenue (#119); a later resident was Edwin Mashburn, foreman for the Post Office.²² Judge George Brown purchased the home at 4609 Park Avenue (#118) from the widow of Frederick Schaeffer. Judge Brown's wife had been a secretary for both Governor Taylor and Governor McAlister.²³

Doctors could also be found in on Park Avenue. Dr. Joe D. Goodwin purchased 4911 Park Avenue (#127) in 1916 and set up his practice in his home. During his decades of service in West Nashville he was active in civic and business affairs, and reported to deliver a majority of babies born in the community.²⁴ Dr. Billie C. Wright moved to Park Avenue in 1911. Specializing as a druggist, he provided service to West Nashville for two decades.²⁵ Dr. Medicus Cullum had his home and practice at 4500 Park Avenue (#103).²⁶ Dr. Vernon Hutton started his practice at 4711 Park Avenue (#122) in 1911. He was the son of a doctor, whose son also became a doctor who practiced in West Nashville.²⁷ Dr. J. D. Thomerson bought the house at 4607 Park Avenue (#117) from Harry Lovelace. Dr. Thomerson didn't open a medical practice in the area, but instead served the community as a pharmacist.²⁸

The Howell Memorial Baptist Church is one of the oldest established churches in West Nashville. The congregation first met in a home on Georgia Avenue and moved to Park Avenue in 1909. In building their new brick, hexagonal church on Park Avenue, the congregation also changed their name to Park Avenue Baptist Church (#89).²⁹ It is from this location that the same church would later expand to encompass the entire block. The second church in the district, the former St. Andrew's Episcopal Church had a church in the neighborhood as early as 1892. In 1927 they moved their building to the corner of 46th and Park avenues. A new stone church was built circa 1933 and the older building became the parish house. (#113 All Saints Anglican Orthodox Church)

Heavy construction on Park Avenue started at the end of the nineteenth century, with most of the lots in the neighborhood having houses on them by the 1930s. Most of the houses built during this time are Queen Anne influenced designs, with a good collection of Bungalow, gabled ell forms, and Four Square houses. Park Avenue has retained many of the original homes as well as its

²¹ *ibid*, 268.

²² *ibid*, 294.

²³ *ibid*, 294.

²⁴ Yvonne Eaves and Doug Eckert, *Images of America: Nashville's Sylvan Park* (Charleston: Arcadia Publishing, 2011), 63.

²⁵ Sarah Foster Kelley, *West Nashville: Its People and Environs* (Nashville: Douglas Printing, Inc, 1987), 286.

²⁶ *ibid*, 268.

²⁷ *ibid*, 286.

²⁸ *ibid*, 335.

²⁹ *ibid*, 277-278.

United States Department of the Interior
National Park Service

National Register of Historic Places Continuation Sheet

Section number 8 Page 29 Park-Elkins Historic District
Davidson County Tennessee

residential character, with the majority of original houses destroyed happening as a result of construction of Cohn Junior High School and Park Avenue Baptist Church.

Elkins Avenue was the first street of the Charlotte Park Addition. Franklin Pierce Lovell bought the house at 4910 Elkins Avenue (#80). Mr. Lovell was a banker and co-founder of Lovell & Gower Company and also the Bank of West Nashville.³⁰ William B. Felts, who was Secretary-Treasurer for Reality Savings Bank and Trust, moved into 4400 Elkins Avenue (#22).³¹ D. V. Johnson, the owner of Johnson Grainery on the newly constructed Centennial Boulevard, purchased the home at 4712 Elkins Avenue (#65).³²

Construction of houses on Elkins Avenue began about the same time as those on Park Avenue, but large scale construction did not occur until the 1910s and 1920s. Due to later construction, there are a greater Bungalow influences on home construction and design. 4701 (#57) and 4608 (#52) Elkins Avenue are examples of Bungalow style, seen in the battered columns, decorative brackets, and a large dormers. Others, such as 4509 (#42) and 4809 (#69) Elkins Avenue have been modified but can still be recognized by their decorative brackets or large dormers. Most houses have weatherboard siding, are set back from the road with large back yards and alleyway access. The properties at 4300 (#15) and 4302 (#17) Elkins Avenue have original stone retaining walls.

Between the avenues of Park and Elkins, at 320 44th Avenue (#128), is a brick building that looks as if it would be more in place on the commercial block of Charlotte than between two residential roads. This was the location of J. E. Lawrence & Son, a neighborhood grocery store. Opening in 1926, this store offered delivery service to residents and would extend credit to those who needed it.³³ The John Lawrence family lived next to the store at 4312 Elkins, which is now a parking lot owned by the Park Avenue Baptist Church.³⁴ The building would later serve as a coin laundry for many years, before housing various other businesses. It is not in use at this time.

Richland Park was an important part in the development of West Nashville. Set aside with the founding of "New Town," it was meant to be a permanent open space for the community. Free concerts would be played at the bandstand in the park and church socials were common during the summer months.³⁵ On many Saturday evenings, local clubs and organizations would have events in the park where they would sell ice-cream to residents, with the top seller winning a prize. Most events would end with a contest, such as a race, with prizes given to the winner. Prizes could

³⁰ *ibid*, 259.

³¹ *ibid*, 249.

³² *ibid*, 272-273.

³³ Yvonne Eaves and Doug Eckert, *Images of America: Nashville's Sylvan Park* (Charleston: Arcadia Publishing, 2011), 43.

³⁴ Sarah Foster Kelley, *West Nashville: Its People and Environs* (Nashville: Douglas Printing, Inc, 1987), 358.

³⁵ *ibid*, 323.

United States Department of the Interior
National Park Service

National Register of Historic Places Continuation Sheet

Section number 8 Page 30 Park-Elkins Historic District
Davidson County Tennessee

vary from a simple watch all the way to a pony.³⁶ Saturday night would bring many people to the park to watch silent movies, and on Thursdays there would even be talkies shown.

The character of Richland Park gradually changed and in 1961 the Recreation Center, along with band shell, were converted into the Richland Park Branch Library (#2). The new library opened in 1961 with seventy-five hundred books, and received a major renovation/addition in 1979, which increased their volume to thirty thousand books and larger reading areas and meeting rooms.³⁷

Cohn Junior High School (#123) opened in 1928 for seventh, eighth, and ninth graders. It opened with a ceremonial march of students, with books, from the old school to the new one.³⁸ Constructed first in the 4800 block of Park Avenue, the homes that were there were demolished or moved. The most prominent of houses moved was the M. F. Greene house (#56) to its new location at 4700 Elkins Avenue. The school was later expanded to include the north side of the 4800 block of Elkins. As with Park Avenue, houses were demolished or moved to make room for the school.³⁹

Principal of the new school was Professor Jonas H. Sykes, who would remain at the school until his retirement in 1939. A lifelong instructor, he first came to West Nashville in 1896 to work as principal of West Nashville High School⁴⁰, which would later be renamed Cockrill School. To commemorate the service of Professor Sykes, the Board of Education decided to name the new athletic field in Clifton Park, Sikes Field.⁴¹

Time changed West Nashville as it grew and became more settled. The trolley system shut down in the 1930s, replaced by buses, and as a result Charlotte Avenue lost most of what industrial life it had and became almost exclusively commercial. This reflected the jobs that the residents south of Charlotte Avenue held. The jobs on Charlotte Avenue were department stores, service and filling stations, restaurants, and several chain stores. The area had changed from rural suburb and industrial park, into a thriving town and community.

The construction of the interstate and continued suburban expansion further west of the city, resulted in a decline for the Sylvan Park area. Also, the businesses on Charlotte Avenue were forced to compete with large suburban shopping centers. In the 1980s, a homeowners association made up of members of the entire Sylvan Park community formed to promote the general welfare of the neighborhood. The association promoted many things such as Independence Day celebrations, neighborhood watch, and local sports team.

³⁶ Ibid, 323.

³⁷ Ibid, 325.

³⁸ Ibid, 328.

³⁹ Ibid, 328.

⁴⁰ Ibid, 197.

⁴¹ Ibid, 330.

United States Department of the Interior
National Park Service

National Register of Historic Places Continuation Sheet

Section number 8 Page 31 Park-Elkins Historic District
Davidson County Tennessee

During the late 1970s and early 1980s, Sylvan Park, like other inner city neighborhoods in Nashville, saw a reversal of the outward migration. As more young families were attracted to the unique character of the historic homes and the affordability of housing costs compared to the suburbs, Sylvan Park experienced an influx of new homeowners who restored many of the neighborhood's properties. A neighborhood association was formed in the 1980s to promote the stabilization and revitalization of the community.

Efforts to preserve the unique historic architecture and character of the neighborhood culminated in the adoption of a Historic Conservation Overlay District for Park and Elkins Aves in 2011. The overlay is administered by the Metropolitan Historic Zoning Commission. It prohibits the demolition of historically contributing structures and reviews new construction in the district for compatibility. The overlay will help ensure that Sylvan Park's historic character and the homes along Park and Elkins avenues will survive for future generations.

United States Department of the Interior
National Park Service

National Register of Historic Places Continuation Sheet

Section number 9 Page 32 Park-Elkins Historic District
Davidson County Tennessee

Bibliography

Eaves, Yvonne, and Doug Eckert. *Images of America: Nashville's Sylvan Park*. Charleston: Arcadia Publishing, 2011.

Kelley, Sarah Foster. *West Nashville: its people and environs*. Nashville: Douglas Printing, Inc, 1987

Park-Elkins Historic District
Name of Property

Davidson, Tennessee
County and State

10. Geographical Data

Acreage of Property 50 acres Nashville West 308 NE

UTM References

(place additional UTM references on a continuation sheet.)

1 16 514636 4000844
Zone Easting Northing
2 16 514654 4000569

3 16 513754 4000526
Zone Easting Northing
4 16 513748 4000808

See continuation sheet

Verbal Boundary Description

(Describe the boundaries of the property on a continuation sheet.)

Boundary Justification

(Explain why the boundaries were selected on a continuation sheet.)

11. Form Prepared By

name/title Kevin Mier – Intern with THC from Southeast Missouri State University
organization Tennessee Historical Commission date August 2011
street & number 2941 Lebanon Pike telephone 615-532-1550
city or town Nashville state TN zip code 37243-0442

Additional Documentation

submit the following items with the completed form:

Property Owner

(Complete this item at the request of SHPO or FPO.)

name Various, see attached
street & number _____ telephone _____
city or town _____ state _____ zip code _____

Paperwork Reduction Act Statement: This information is being collected for applications to the National Register of Historic Places to nominate properties for listing or determine eligibility for listing, to list properties, and to amend existing listing. Response to this request is required to obtain a benefit in accordance with the National Historic Preservation Act, as amended (16 U.S.C. 470 *et seq.*)

Estimated Burden Statement: Public reporting burden for this form is estimated to average 18.1 hours per response including time for reviewing instructions, gathering and maintaining data, and completing and reviewing the form. Direct comments regarding this burden estimate or any aspect of this form to the Chief, Administrative Services Division, National Park Service, P. O. Box 37127, Washington, DC 20013-7127; and the Office of Management and Budget, Paperwork Reductions Projects (1024-0018), Washington, DC 20303.

United States Department of the Interior
National Park Service

National Register of Historic Places Continuation Sheet

Section number 10 Page 33 Park-Elkins Historic District
Davidson County Tennessee

Verbal Boundary Description and Justification

The Park-Elkins Historic District is bounded by 42nd Avenue on the east and 50th Avenue on the west. The southern boundary is the houses on the south side of Elkins Avenue. The northern boundary is the houses on the north side of Park Avenue. Also contained inside the district is Richland Park and the Park Avenue Baptist Church campus, both of which are located south of Charlotte Avenue.

The boundary was chosen do to its large concentration of historic unaltered buildings that represent the growth and development of West Nashville. It includes two churches, a school, and a commercial building. It is the most intact collection of properties that represents the development of the Sylvan Park neighborhood.

United States Department of the Interior
National Park Service

National Register of Historic Places Continuation Sheet

Section number photos Page 34 Park-Elkins Historic District
Davidson County Tennessee

Photographs

Photos by: Claudette Stager, Kevin Mier, and Wendell Goodman
Dates: November 2010, June-August 2011
Digital negatives: Tennessee Historical Commission

Park Avenue between 42nd and 43rd avenues
Facing west, southwest.
#1 of 21

Corner of Park Avenue and 44th Avenue
Facing west
#2 of 21

4410, 4412, 4414, 4500 Park Avenue
Facing northwest
#3 of 21

Streetscape by 4505 Park Avenue
Facing east
#4 of 21

Corner of Park and 48th avenues, Cohn school at edge of photo
Facing Southeast
#5 of 21

Streetscape of Elkins Avenue between 42nd 43rd avenues
Facing Southwest
#6 of 21

Former William B. Felts House
Corner of Elkins and 44th avenues
Facing northwest
#7 of 21

Former J. E. Lawrence and Son Grocery
44th Avenue between Park and Elkins avenues
Facing northeast
#8 of 21

United States Department of the Interior
National Park Service

National Register of Historic Places Continuation Sheet

Section number photos Page 35 Park-Elkins Historic District
Davidson County Tennessee

Park Avenue Baptist Church, Sadler Auditorium
Corner of Park and 44th avenues
Facing northeast
#9 of 21

Richland Park Library inside Richland Park
Facing southwest
#10 of 21

4300 Elkins Avenue
Facing north
#11 of 21

4403 Elkins Avenue
Facing south
#12 of 21

4511 Elkins Avenue
Facing south
#13 of 21

4700 Elkins Avenue
Facing north
#14 of 21

4206 Park Avenue
Facing north
Example of a non-contributing resource
#15 of 21

4209 Park Avenue
Facing south
#16 of 21

4400 Park Avenue
Facing northwest
Example of a non-contributing resource
#17 of 21

4403 Park Avenue
Facing south

United States Department of the Interior
National Park Service

National Register of Historic Places Continuation Sheet

Section number photos Page 36 Park-Elkins Historic District
Davidson County Tennessee

#18 of 21

4513 Park Avenue
Facing south
#19 of 21

4711 Park Avenue
Facing south
#20 of 21

4801 Park Avenue
Facing south
Cohn school
#21 of 21

United States Department of the Interior
National Park Service

National Register of Historic Places Continuation Sheet

Section number photos Page 37 Park-Elkins Historic District
Davidson County Tennessee

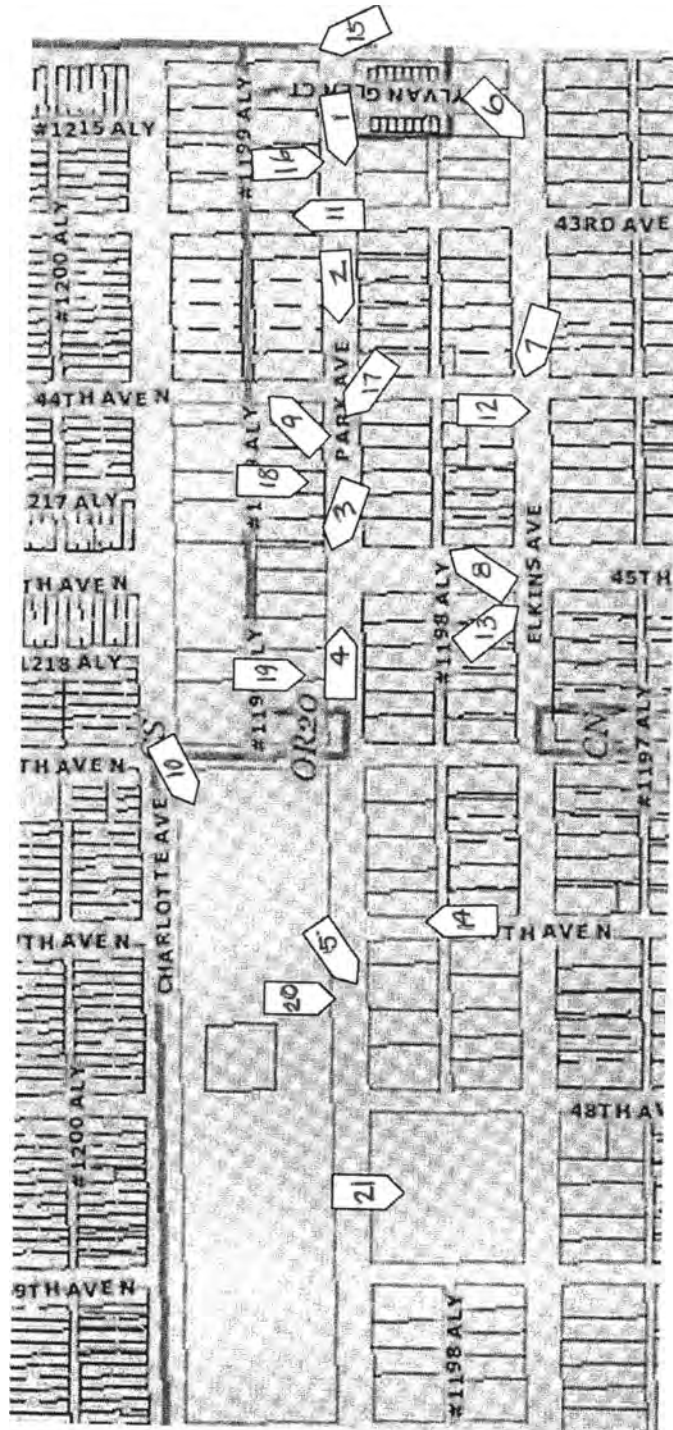


Photo key

United States Department of the Interior
National Park Service

National Register of Historic Places Continuation Sheet

Section number owners Page 38 Park-Elkins Historic District
Davidson County Tennessee

Map Key	Physical Address*		Owner(s)	Owner Address
	Num	Street		
1	4601	Charlotte Avenue	METRO NASHVILLE PARKS (RICHLAND PARK)	PARKS AND RECREATION DEPARTMENT , C/O TOMMY LYNCH, INTERIM DIRECTOR, POST OFFICE BOX 196340, NASHVILLE TN 37219
2	4711		METRO NASHVILLE LIBRARY (RICHLAND BRANCH LIBRARY)	NASHVILLE PUBLIC LIBRARY, C/O DIRECTOR, 615 CHURCH STREET, NASHVILLE TN 37219
3	4200	Elkins Avenue	O'TRELL PROPERTIES, LLC	P O BOX 90295 NASHVILLE 37209
4	4201		ARMSTRONG, JAMES C. ET UX	NASHVILLE TN 37209 (FOR THIS AND ALL OTHERS THAT HAVE OWNER ADDRESS BLANK)
5	4202		WILKERSON, BARBARA A.	
6	4203		JOHNSON, JAMES G., IV & NINA E	
7	4204		WALL, JAMES LARRY (LE)	
8	4205		CLAYTON, HANSEL C. JR.	4196 BELMONT PARK TR NASHVILLE 37215 C/O GANIA CLAYTON
9	4206		CLP LTD. PARTNERSHIP	7640 RIVER RD NASHVILLE 37209
9	4207		YARBROUGH, BARRY	
11	4208		DINGLER, MOLLIE ANN & DAVID T.	
12	4209		LEFKOWITZ, PAUL & HEATHER	
13	4210		WAYMAN, JOHN JOSHUA & MARCI MA	
14	4211		MYSZKA, MICHAEL & POWERS, KATH	
15	4300		OWEN, JAMES M., SR. ET UX	
16	4301		WILLIAMS, PATRICIA H.	
17	4302		BLANKENSHIP, MARTHA Y.	
18	4303		CLAYPOOL, WM. W., III & COOK, M	
19	4305		WISEMAN, EDWARD H. ET UX	
20	4307		HUTCHINS, LONEY F. & P. JOAN	
21	4311		JOHNSON, DAVID C. & BEVERLEY	
22	4400		FULLER, ROY CALHOUN & BUFFERD	
23	4401		GUNN, KIMBERLY C.	
24	4403		BATSON, OSCAR RANDOLPH JR.	507 BEECH CREEK RD S BRENTWOOD 37027
25	4405		IVEY, DAVID	
26	4406		REGAN, CARLA	
27	4407		BLACKWELL, GREGORY W. & RAY, H	
28	4408		MAYNARD, LOUISA S.	

United States Department of the Interior
National Park Service

National Register of Historic Places Continuation Sheet

Section number owners Page 39 Park-Elkins Historic District
Davidson County Tennessee

Map Key	Physical Address*		Owner(s)	Owner Address
	Num	Street		
29	4409	Elkins Avenue	WILLIAMS, SARAH F.	
30	4410		RIBAS, MICHAEL A. & PITTA, JENN	
31	4412		CARLETTELLO, DOMINGO & HELEN	
32	4413		WOODARD, GARY W. & SUZANNE I.	
33	4500		CORBIN, JACKIE D.	
34	4501		WALKER, WILLIAM DELL & ALICE B	
35	4502		HARWELL, PAULA	
36	4503		WHEELER, MARILYN KAY	
37	4504		EUBANKS, CRAIG A. & MICHELLE F	
38	4505		VADEN, MICHAEL TRUSTEE	P O BOX 22359 NASHVILLE 37202
39	4506		PICKETT, JAMES BART	
40	4507		MORRIS, FRANCES LOUISE	
41	4508		BURNETTE, MARY ELAINE-HAAS	
42	4509		GRIFFIN, ABBEY E.	
43	4510		WELLS, DAVID C., JR. & MEREDIT	
44	4511		PEATMAN, JAMES R. & VIVICA T.	
45	4600		ISRAEL, CRAIG E. & TIFFANY L.	
46	4601		CONSTAD, JANE	40 E 9TH ST # 5 B NY NY 10003
47	4603		DODSON, JOANNA B & DONALD R.	8044 ARBOR DR NASHVILLE 37221
48	4604		BARZELAY, IFAR & MARY A.	
49	4605		STAFFORD, SAMUEL C. ET UX	
50	4606		JOHNSON, MALCOLM	
51	4607		TEAL, JOE SCOTT	P O BOX 424 DICKSON 37055
52	4608		SUTTON, WILLIAM P.	408 GROSSE POINTE CT NASHVILLE 37209
53	4609		SUTTON, BARRETT B., JR.	
54	4610		SERAFINI, DANIEL A. & OWEN, KA	
55	4611		SUTTON, GERTRUDE D.	708 GREELEY DR 37205
56	4700		BAILEY, NICHOLAS D.	
57	4701		WELCH, JOSEPH A. & SUSAN A.	

United States Department of the Interior
National Park Service

National Register of Historic Places Continuation Sheet

Section number owners Page 40 Park-Elkins Historic District
Davidson County Tennessee

Map Key	Physical Address*		Owner(s)	Owner Address
	Num	Street		
58	4705	Elkins Avenue	BCE PROPERTIES, LLC	234 CHAPEL HILL RD FLORA MS 39071
59	4706		JACKSON, ANGELA D.	4706 ELKINS AV #C NASHVILLE 37209
60	4707		WENDEL, KELLY F.	
61	4708		LUKICH, MIRJANA	
62	4709		BRUNSON, DEWEY E. ET UX	
63	4710		SHUFF, GEORGE W., IV & CHRISTY	
64	4711		BRUNSON, D. E. ETUX	
65	4712		OKIMOTO, JORGE ET UX	
66	4803		MOBERLY, DAMON B. & ANNE CLAIR RE	
67	4805		EATON, MILLIAN C. & CROOK, ANGU	407 LEAKE AV NASHVILLE 37205
68	4807		WILSON, CHRISTIE	
69	4809		JACKSON, A. BRADLEY & HOPE B.	
70	4811		MORROW, MILTON H. ETUX	
71	4900		MCDONALD, BRENT A. & MORGAN F.	
72	4901		SMITH, PATRICIA ANN	
73	4902		HAGEDORN, DAMIEN MICHAEL & MEG	
74	4903		BASTARACHE, JULIE A.	
75	4904		4904 ELKINS AVENUE	
76	4905		BARD, ISABEL & ANDERSON, MILDR RED J. & BA	
77	4906		4906 ELKINS AVENUE	
78	4907		CUNNINGHAM, EULA MAE	
79	4909		MOSS, WILLIAM E. & PANSY L., T TRUSTEES	
80	4910		4910 ELKINS AVENUE	
81	4911		MOORE, MICHAEL PAUL	
82	4200	Park Avenue	BLACK, JEFFREY A. & KISSY L	
83	4202		BLACK, JEFFREY A. & KRISTIN L.	
84	4202		HANLON, ALLISON & WONG, GAR BO	
85	4206		PICKLE, GLEN C	
86	4209		HOLLEMAN, JASON & MARGARET	

United States Department of the Interior
National Park Service

National Register of Historic Places Continuation Sheet

Section number owners Page 41 Park-Elkins Historic District
Davidson County Tennessee

Map Key	Physical Address*		Owner(s)	Owner Address
	Num	Street		
87	4210	Park Avenue	HOLLEMAN, JASON D. & MARGARET	
88	4211		VIHON, GAYLE L.	
89	4300		PARK AVENUE BAPTIST CHURCH	C/O PASTOR BOB ORGERON
90	4400		JORDAN, LLOYD C. ET UX	303 44TH AVENUE NORTH NASHVILLE 37209
91	4402		TERRY, PATRICK W. & ROBERT J.	112 ACKLEN PARK DR B-1 NASHVILLE 37203
92	4403		MAY, CHARLES M.	
93	4404		BAYER, JEFFREY S. & MICHEL C.	
94	4405		GOLDBERG, BENJAMIN	
95	4406		WHITTENBURG, BENJAMIN R. & MAE	
96	4407		FRANKENSTEIN, JEFFERY R. & JEN	
97	4408		MAGI GROUP, LLC	650 WEDGEWOOD AV NASHVILLE 37203
98	4409		SAVAGE, BRITTANY	
99	4410		HAYES, KRISTIN M.	
100	4411		BEZIAT, EVAN THOMPSON & ASHLEY Y ROBESON	
101	4412		PRATT, RICHARD A. ET UX	
102	4414		GREENBERG, CLAY S. & JULIE W.	
103	4500		RUNYEON, RONALD	P O BOX 159 PEGRAM 37143
104	4501		LOVELESS, THOMAS D. & MARY	
105	4502		MONTGOMERY, MICHAEL S. ET UX	
106	4503		VEIT, CHRISTOPHER RAYMOND & KATHRYN	
107	4505		HACKER, DAVID & MELISSA	
108	4507		GAFFNEY, NORA E.	
109	4508		RUNYEON, RONALD D. & SIMMONS,	P O BOX 90617 C/O THE RUNYEON GROUP NASHVILLE 37209
110	4510		PRATT, ANDREW B. ETUX & PRATT, JOSEPH R.	4410 IDAHO AV NASHVILLE 37209
111	4511		DUNAWAY, THOMAS E. JR., & AMY M.	
112	4512		PRATT, ANDREW B. ET UX	405 46TH AV N NASHVILLE 37209
113	4513		ALL SAINTS ANGLICAN ORTHODOX CHURCH	C/O HURON C. MANNING, JR., RECTOR
114	4601		BARTH, ERIC JOHN & HELEN THERE	
115	4603		CLANCY, CHRISTOPHER J.	(SHOULD BE CHRISTOPHER J AND MARTHA)

United States Department of the Interior
National Park Service

National Register of Historic Places Continuation Sheet

Section number owners Page 42 Park-Elkins Historic District
Davidson County Tennessee

Map Key	Physical Address*		Owner(s)	Owner Address
	Num	Street		
116	4605	Park Avenue	DOZIER, MARTHA P.	
117	4607		SCHULERT, GRANT S. & ALYNNA K.	
118	4609		MURPHY, DANNY & SUSAN	
119	4701		MCGOWAN FAMILY INVESTMENTS	2401 RIVER RD ASHLAND CITY 37015
120	4703		GREER, JOHN J., SR. ET UX	
121	4707		SANDERS, GALEN	
122	4711		BREYER, TODD S.	
123	4801		METRO GOV'T S COHN	222 3RD AV N STE 701 NASHVILLE 37201
124	4901		GOODMAN, WENDELL G. & LUCY E.	
125	4905		MARTIN, ROBERT LEE & ETHRIDGE-	
126	4907		MCATEER, JAMES W. & STOBBER, CA	
127	4911		FORTE, ANTHONY V. ETUX	
128	320	44 th Avenue	FREEMAN, CARY M.	4314 WESTLAWN 37209
55A	306	47 th Avenue	O'NEILL, CHRISTOPHER	
66A	307	48 TH Avenue	CARTER, LAMONT	

UNITED STATES DEPARTMENT OF THE INTERIOR
NATIONAL PARK SERVICE

NATIONAL REGISTER OF HISTORIC PLACES
EVALUATION/RETURN SHEET

REQUESTED ACTION: NOMINATION

PROPERTY NAME: Park--Elkins Historic District

MULTIPLE NAME:

STATE & COUNTY: TENNESSEE, Davidson

DATE RECEIVED: 9/30/11 DATE OF PENDING LIST: 10/26/11
DATE OF 16TH DAY: 11/10/11 DATE OF 45TH DAY: 11/15/11
DATE OF WEEKLY LIST:

REFERENCE NUMBER: 11000806

REASONS FOR REVIEW:

APPEAL: N DATA PROBLEM: N LANDSCAPE: N LESS THAN 50 YEARS: N
OTHER: N PDIL: N PERIOD: N PROGRAM UNAPPROVED: N
REQUEST: N SAMPLE: N SLR DRAFT: N NATIONAL: N

COMMENT WAIVER: N

ACCEPT RETURN REJECT 11/15/2011 DATE

ABSTRACT/SUMMARY COMMENTS:

*Compact District Demanding Suburban development in west Nashville
Conundrum on neighborhood school & churches*

RECOM./CRITERIA Accept ATC

REVIEWER J. Gubbert DISCIPLINE _____

TELEPHONE _____ DATE _____

DOCUMENTATION see attached comments Y/~~N~~ see attached SLR Y/N J

If a nomination is returned to the nominating authority, the nomination is no longer under consideration by the NPS.

















SCHOOL
SPEED
LIMIT
15
WHEN
CHILDREN
PRESENT



PARK AVENUE
BAPTIST CHURCH
SUNDAY WORSHIP
10:15 AM





















St. Francis Chapel
This chapel was built in 1885 and is a fine example of Gothic Revival architecture. It is a landmark of the community and is open to all. For more information, please contact the parish office at 123 Main St., Tel. 555-1234.



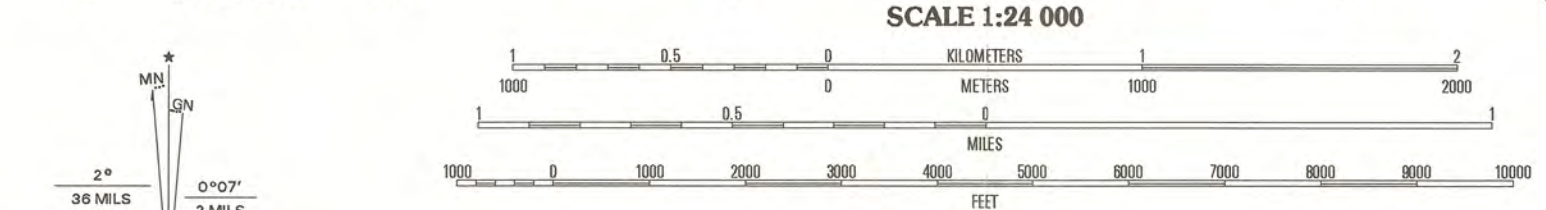


WINDY HILL SCHOOL



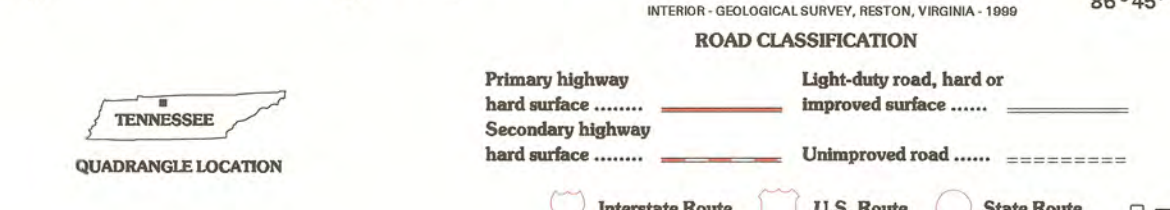
PARK-ERKINS HISTORIC DISTRICT
DAVIDSON COUNTY TN
1-16-514636-4000874
2-16-514654-4000529
3-16-513754-4000526
4-16-513748-4000808

Produced by the United States Geological Survey
Topography compiled 1951. Planimetry derived from imagery taken 1997 and other sources. Survey control current as of 1968
North American Datum of 1983 (NAD 83). Projection and 1000-meter grid: Universal Transverse Mercator, zone 16 10 000-foot ticks: Tennessee Coordinate System of 1983
North American Datum of 1927 (NAD 27) is shown by dashed corner ticks. The values of the shift between NAD 83 and NAD 27 for 7.5-minute intersections are obtainable from National Geodetic Survey NADCON software
There may be private inholdings within the boundaries of the National or State reservations shown on this map
Landmark buildings verified 1968
Entire area lies within the Nashville-Davidson County Metropolitan Government



SCALE 1:24 000
CONTOUR INTERVAL 10 FEET
NATIONAL GEODETIC VERTICAL DATUM OF 1929
TO CONVERT FROM FEET TO METERS, MULTIPLY BY 0.3048

THIS MAP COMPLIES WITH NATIONAL MAP ACCURACY STANDARDS
FOR SALE BY U.S. GEOLOGICAL SURVEY, P.O. BOX 25286, DENVER, COLORADO 80225
AND TENNESSEE DEPARTMENT OF CONSERVATION, DIVISION OF GEOLOGY,
NASHVILLE, TENNESSEE 37243



QUADRANGLE LOCATION

1	2	3	1 Forest Grove
4	5	6	2 Whites Creek
7	8	9	3 Goodlettsville
10	11	12	4 Scottsboro
13	14	15	5 Nashville East
16	17	18	6 Bellevue
19	20	21	7 Oak Hill
22	23	24	8 Antioch

ADJOINING 7.5' QUADRANGLE NAMES

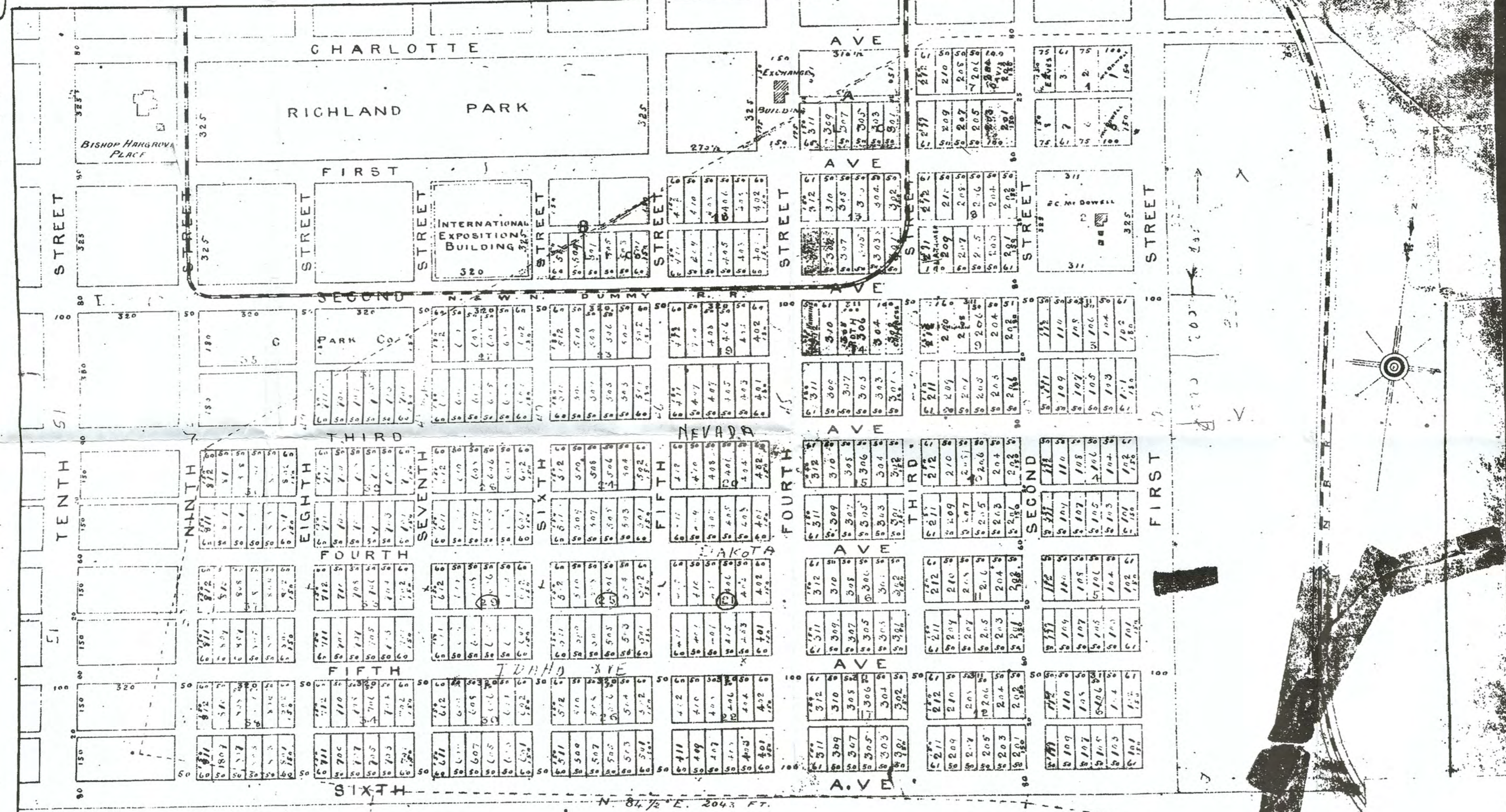
NASHVILLE WEST, TN
1997 308NE
NMA 3656 III N-SERIES V841

ISBN 0-607-68737-0
9 780607 687372
\$6.00
U.S. Geological Survey Office

7

103

103

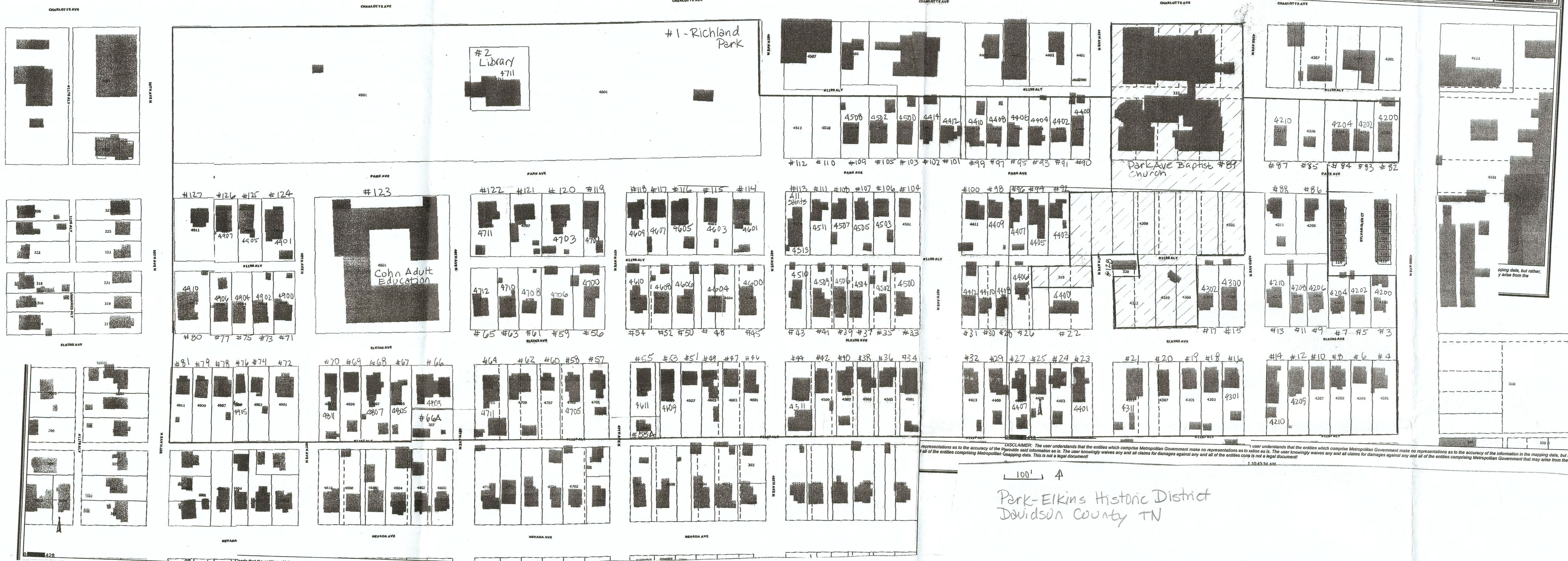


N. L. I. CO'S LANDS

JOHN WOODARD AREA 63.23 ACRES

Jos. T. ELLISTON LANDS

SEE Pg 102



100' ↕
 Park-Elkins Historic District
 Davidson County TN

DISCLAIMER: The user understands that the entities which comprise Metropolitan Government make no representations as to the accuracy of the information in the mapping data, but rather, the user knowingly waives any and all claims for damages against any and all of the entities comprising Metropolitan Government that may arise from the use of this information as is. This is not a legal document.

spiling data, but rather, y arise from the

State Historic Preservation Office
c/o Patrick McIntyre, Jr.
Tennessee Historical Commission
2941 Lebanon Road
Nashville, Tn. 37214

9/12/11

Dear Mr. McIntyre, Jr.

I am the sole owner of 4200 A & B Elkins Ave, Nashville, Tn. 37209. I object to the inclusion of these properties on the National Historic Register for the following reasons:

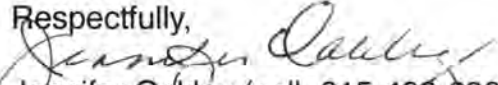
- 1) 4200 A Elkins has had a complete renovation. There is nothing original in the house except for a small portion of the foundation and roof. This renovation was completed 6/23/11 before passage with the Metro Council. The foundation, floor joists, interior and exterior walls, plumbing, electrical, heat and air conditionings, windows and doors, bathrooms, insulation, roof, kitchen, porch and floorplan are all new. The siding is vinyl which does not correlate with the existing guidelines.
- 2) 4200 B Elkins has been behind the A house since approximately 1910. It is legally nonconforming per codes. A building permit has been obtained, prior to the passage of the rules submitted by Metro Council, which will allow for renovation within the next two years as well as a garage between the two houses. The windows have already been replaced. Only a side portion of the house can be seen from 42nd Ave. and a tiny portion of the front porch from Elkins.


Both houses are currently rented and registered as such with Metro.

- 3) Directly behind my properties are the fenced Condos which have been built for many years. They certainly do not comply with any of the proposed guidelines.

As my properties already do not comply with the proposed guidelines, I respectfully request that they be omitted from the Register. Perhaps consideration can be given to removing this complete corner from the Register, as it includes 18 residences that already do not comply.

Of course, I realize I am able to only request on behalf of my properties and hence, this letter. I look forward to your response as soon as possible.

Respectfully,

Jennifer Oakley (cell 615-498-6397)
POB 90295
Nashville, Tn. 37209

Notarized this 12th day of September, 2011 by 
Nashville, Tn.

My Commission Expires 7-8-13





TENNESSEE HISTORICAL COMMISSION
DEPARTMENT OF ENVIRONMENT AND CONSERVATION
2941 LEBANON ROAD
NASHVILLE, TN 37243-0442
(615) 532-1550

September 28, 2011

Carol Shull
Keeper of the National Register
National Park Service
National Register Branch
1201 Eye Street NW
8th floor
Washington, DC 20005

Dear Ms. Shull:

Enclosed please find the documentation to nominate the *Park-Elkins Historic District* to the National Register of Historic Places.

If you have any questions or if more information is needed, contact Claudette Stager at 615/532-1550, extension 105 or Claudette.stager@tn.gov.

Sincerely,

E. Patrick McIntyre, Jr.
State Historic Preservation Officer

EPM:cs

Enclosures