

United States Department of the Interior
National Park Service

56-1033

National Register of Historic Places Registration Form

This form is for use in nominating or requesting determinations for individual properties and districts. See instructions in National Register Bulletin, *How to Complete the National Register of Historic Places Registration Form*. If any item does not apply to the property being documented, enter "N/A" for "not applicable." For functions, architectural classification, materials, and areas of significance, enter only categories and subcategories from the instructions.



1. Name of Property

Historic name: Huntley Project Office
Other names/site number: Huntley Project Irrigation District Office
Name of related multiple property listing: N/A

(Enter "N/A" if property is not part of a multiple property listing)

2. Location

Street & number: 2291 2nd Street West
City or town: Ballantine State: MT County: Yellowstone
Not For Publication: N/A Vicinity: N/A

3. State/Federal Agency Certification

As the designated authority under the National Historic Preservation Act, as amended,

I hereby certify that this nomination ___ request for determination of eligibility meets the documentation standards for registering properties in the National Register of Historic Places and meets the procedural and professional requirements set forth in 36 CFR Part 60.

In my opinion, the property meets ___ does not meet the National Register Criteria. I recommend that this property be considered significant at the following level(s) of significance:

national statewide local

Applicable National Register Criteria:

A B C D

George A. Hebert 2/22/2017
 Signature of certifying official/Title: Date
Bureau of Reclamation, Dept. of Interior
 State or Federal agency/bureau or Tribal Government

In my opinion, the property meets ___ does not meet the National Register criteria.
Mark F. Zaunber 3/6/2017
 Signature of commenting official: Date
MONTANA SHPO MONTANA STATE HISTORIC PRESERVATION OFFICE
 Title: State or Federal agency/bureau or Tribal Government

Huntley Project Office
Name of Property

Yellowstone Co., MT
County and State

4. National Park Service Certification

I hereby certify that this property is:

- entered in the National Register
- determined eligible for the National Register
- determined not eligible for the National Register
- removed from the National Register
- other (explain:)

Joe Edson H. Beall
Signature of the Keeper

6-5-17
Date of Action

5. Classification

Ownership of Property

(Check as many boxes as apply.)

- Private:
- Public – Local
- Public – State
- Public – Federal

Category of Property

(Check only one box.)

- Building(s)
- District
- Site
- Structure
- Object

Huntley Project Office
Name of Property

Yellowstone Co., MT
County and State

Number of Resources within Property
(Do not include previously listed resources in the count)

Contributing	Non Contributing	
<u>1</u>	_____	buildings
_____	_____	sites
_____	_____	structures
_____	_____	objects
<u>1</u>	_____	Total

Number of contributing resources previously listed in the National Register N/A

6. Function or Use

Historic Functions

(Enter categories from instructions.)

GOVERNMENT: office building

Current Functions

(Enter categories from instructions.)

GOVERNMENT: office building

7. Description

Architectural Classification

(Enter categories from instructions.)

No style

Materials: (enter categories from instructions.)

Principal exterior materials of the property: WOOD, METAL -Steel, CONCRETE

Huntley Project Office
Name of Property

Yellowstone Co., MT
County and State

Narrative Description

(Describe the historic and current physical appearance and condition of the property. Describe contributing and noncontributing resources if applicable. Begin with a **summary paragraph** that briefly describes the general characteristics of the property, such as its location, type, style, method of construction, setting, size, and significant features. Indicate whether the property has historic integrity.)

Summary Paragraph

The Huntley Project Office is located in the small rural community of Ballantine, Montana. The office serves as the administrative center of one of the earlier irrigation projects in the nation and the third project in Montana constructed by the U.S. Reclamation Service (now called the Bureau of Reclamation) after the passage of the Reclamation Act in 1902.¹ The office was built in 1918, less than fifteen years after the project was authorized in 1905. It replaced the original Reclamation Service project office after the 1918 Yellowstone River flood inundated portions of the headquarters camp at Huntley, MT. The office is set back from the street at the corner of 2nd Street West and Cane Street in Ballantine. The office is a simple utilitarian rectangular-shaped hipped roof building clad with drop siding, with a concrete vault extending from the rear elevation. The simple design with minimal decoration is in keeping with Reclamation's practice of constructing basic, functional buildings with little or no ornamentation. The district office retains a remarkable degree of integrity and has served as the administrative building for the Huntley Project continuously since its construction, first occupied by the Reclamation Service, and then by the Huntley Project Irrigation District. The office is one of several historic and modern buildings that comprise the Huntley Project Irrigation District yard complex in Ballantine. The office building is, however, the only property in the complex being nominated.²

Narrative Description

The Huntley Project Office is located at 2291 2nd Street West on the corner of 2nd Street West (running north/south) and Cane Street (running east/west) in the small rural community of Ballantine, Montana. Ballantine is approximately twenty-three miles northeast of Billings, the largest city in Montana.

Ballantine is situated within the Yellowstone River Valley and was one of the seven towns platted by Reclamation in 1907 within the Huntley Project. The office is part of the Huntley Project Irrigation District yard, which encompasses an entire block (Block 1) of the Ballantine townsite. The district yard also includes several other historic buildings and a large metal shop building.

The office sits on the northwest corner of Block 1, on the east side of 2nd Street West and south side of Cane Street. The project office is the only building standing today along the east side of 2nd Street in the block. South of the project office, fir trees now stand where two Reclamation employee cottages once stood. Segments of the original concrete sidewalks and extant gate piers, however, still attest to the earlier presence of the cottages.

¹ In 1923 the U.S. Reclamation Service was named the Bureau of Reclamation. For this nomination, Reclamation will be used to refer to both U.S. Reclamation Service and Bureau of Reclamation unless a distinction must be indicated.

² This nomination is part of the mitigation agreed upon by the Bureau of Reclamation, the Federal Emergency Management Agency (FEMA), and the Montana State Historic Preservation Office (SHPO) in a September 2011 Memorandum of Agreement.

Huntley Project Office
Name of Property

Yellowstone Co., MT
County and State

The same concrete sidewalk continues in front of the project office and partially extends to the north towards Cane Street. The project office is set back from the street and is approached by a concrete walkway off the sidewalk. The walkway reaches the front concrete steps where a second side walkway, perpendicular to the first, proceeds south to the district yard. In front of the office and north of the front walkway is the original concrete flagpole base set in the ground. Also north of the sidewalk is a large modern metal sign that identifies the building. A low concrete retaining wall extends between the southwest corner of the office and the 2nd Street sidewalk. Between the project office and Cane Street to the north stand several junipers and cottonwood trees in a rough alignment with the street.

Project Office Description

The project office is a plain, utilitarian office building almost devoid of any ornamentation. It is a rectangular wood frame hipped roof single-story building that sits on a full poured concrete foundation. The main office building measures 36 feet east/west by 28 feet north/south. All windows exhibit original wood casings and sills. Corner boards frame the north corners. A slightly sloping shed roof covers the original poured concrete vault (17 feet by 11 feet) extending from the rear (east) elevation, and a later 1980s wood frame addition (17 feet by 12 feet) fills the southeast corner of the building extending off the south wall of the vault. The entire building is covered with ribbed green steel roofing. The roof displays extended eaves with exposed rafters.

Exterior- West elevation, building façade

The project office façade appears almost exactly as it did when first constructed in 1918. The façade displays a screened cutaway porch that is slightly over half the width of the building at the south end of the façade, accessed by a screen door. A screened transom tops the screen door. The front entrance to the office is centered on the façade, accessed from within the screened porch. Two concrete steps approach the front porch entrance with a metal pipe railing on the right side of the steps.

Drop siding clads the façade exterior. To the left (north) of the screen porch entrance is a single one-over-one wood sash window centered on the wall. This wall also displays a metal sign that appears to be original that reads:

OFFICE
UNITED STATES
RECLAMATION SERVICE

The screened porch has a closed rail clad with drop siding. Above the rail are screen panels with narrow wood frames. The porch interior exhibits a beadboard ceiling and vertical beadboard at the porch rail interior wall. Narrow fir flooring covers the porch floor. Quarter-round molding finishes the floor and ceiling junctures and at the porch railing and screen panel junctures.

Drop siding clads the two interior porch walls (north and east). The east interior wall holds an original three panel wood door with upper single lite (now covered with plywood) topped by a transom that once held patterned glass. The wall also exhibits a one-over-one wood sash window with an accompanying wood screen.

Exterior – North wall (original district office)

The project office north wall is nearly symmetrical with four window openings across its length. All windows are filled with one-over-one replacement units but retain their original framing. Three windows have screens at the lower sash. This wall also displays the same sign as the west wall at the west end of the wall. Near the east end of the wall, the original coal chute door is now encased in concrete. Approximately ten inches of the foundation is exposed at this wall.

Huntley Project Office
Name of Property

Yellowstone Co., MT
County and State

Exterior – South wall (original district office)

The south wall holds a door entry and three window openings across its length. Windows include two original one-over-one wood sash windows (one with an accompanying full screen) and a third one-over-one replacement unit similar to the north windows. The east end of the wall holds an entry where the door has recently been replaced with a flush fiberglass door. A small concrete stoop sits directly in front of the door. Projecting over the door is a recently erected gabled roof hood structure (about 8 feet by 7 feet) supported by two square wood posts set in concrete.

Exterior – East Wall

The rear (east) wall consists of a vault that is original to the building and an addition.

Vault

The rectangular vault extends off the east office wall, approximately five feet from the northeast corner of the building, and measures approximately 17 feet by 11 feet. The vault, constructed of poured reinforced concrete, is entered from inside the building. It has no openings on its north wall. Centered on the vault east wall is a small fixed sing window of patterned glass. The north wall has three evenly spaced concrete pads beneath the wall and three evenly spaced small concrete braces at the roof line. The south wall is now covered by the addition.

Addition (1980s construction)

A rectangular addition fills the space at the southeast corner of the building, attached along the south side of the vault and the east wall of the office, and squares the building's east aspect. Pressed board siding covers this wood frame addition with metal clips finishing the southeast corner. Single one-by-one slider windows pierce the east and south addition wall.

Interior

The project office retains many original interior elements such as doors, window frames and baseboards that have not been altered since their installation. The project office presently consists of three rooms, a vault and the 1980s addition. A narrow hall extends from the front door to open into a meeting room at the center of the building.³ The hall separates the manager's office in the front southwest corner and the smaller administrative office in the northwest corner. The north hall wall holds a door into the administrative office and a counter opening. The oak counter has a curved shelf supported by two braces. Above the counter shelf is a rectangular opening filled with grillwork except for a half circular opening between the shelf and the bottom of the grillwork to allow for transactions. Adjacent to the counter on the wall is a metal sign that reads:

WATER ORDERS
COLLECTIONS
TIME CHECKS
INFORMATION

All interior doors are solid five panel oak doors with original bronze hardware and cap trim. All interior oak window casing are original and display the same cap trim.

The project office contains the original Barnes Safe & Lock Company floor safe in the administrative office.

³ The meeting room originally consisted of two rooms and a bath, Larry Yaekel, interview with Joan L. Brownell, August 30, 2016, Ballantine, MT.

Huntley Project Office
Name of Property

Yellowstone Co., MT
County and State

Throughout the building are original built-in cabinets, shelving, flat files and card catalogue cabinets. The original Herring-Hall-Marvin Safe Co. iron vault double door accesses the vault from the meeting room. The vault interior has concrete walls, floor and ceiling. The vault houses irrigation district records.

The 1980s addition is entered from the south side of the meeting room's east wall. The addition consists of a small kitchen area, some cabinets, and the bathroom. This addition also encloses steep wood stairs into the basement, where originally an exterior bulkhead with double metal doors accessed the basement stairs. At the bottom of the stairs, a five panel wood door opens into the basement. The full basement is divided into two rooms, has a concrete floor, and is partially finished with narrow horizontal tongue-and-groove boards. The larger room has a coal chute, still visible on the north foundation wall and a partial wood wall presumably for a coal bin. The smaller room at the basement south end is separated from the larger room by a door opening (door has been removed). This room has a wood floor and its ceiling is covered with beadboard.

Integrity

The Huntley Project Office retains a high degree of integrity of both exterior and interior design and strongly conveys its historic appearance and character. Historic photographs wonderfully reveal the timelessness of the office and its ability to reflect to any visitor its place in history.

The office stands in its original location since its 1918 construction, and the immediate setting for this building is undisturbed, although it lacks original fencing elements and a flagpole. No intrusions to the surrounding neighborhood have occurred. While the two original employee cottages once located to the south of the office were torn down in the 1970s, the district yard remains active with several historic outbuilding still extant.

The design of the building retains its original rectangular form, roof type, cutaway screened porch, window and door openings and the concrete vault. Most of the original construction materials remain intact like drop siding and window framing and interior finish woodwork. Modifications include steel roofing, which replaced wood shingle roofing material; removal of the chimney, installation of compatible one-over-one replacement window units in some windows, and the replacement side door with its projecting hipped roof hood. The rear addition, constructed in the 1980s, is not overly intrusive due to its low profile and its location in the rear of the building. The Huntley Project office strongly retains its ability to reflect its historic appearance and character, and the changes do not affect its overall integrity.

Huntley Project Office
Name of Property

Yellowstone Co., MT
County and State

8. Statement of Significance

Applicable National Register Criteria

(Mark "x" in one or more boxes for the criteria qualifying the property for National Register listing.)

- A. Property is associated with events that have made a significant contribution to the broad patterns of our history.
- B. Property is associated with the lives of persons significant in our past.
- C. Property embodies the distinctive characteristics of a type, period, or method of construction or represents the work of a master, or possesses high artistic values, or represents a significant and distinguishable entity whose components lack individual distinction.
- D. Property has yielded, or is likely to yield, information important in prehistory or history.

Criteria Considerations

(Mark "x" in all the boxes that apply.)

- A. Owned by a religious institution or used for religious purposes
- B. Removed from its original location
- C. A birthplace or grave
- D. A cemetery
- E. A reconstructed building, object, or structure
- F. A commemorative property
- G. Less than 50 years old or achieving significance within the past 50 years

Huntley Project Office
Name of Property

Yellowstone Co., MT
County and State

Areas of Significance

(Enter categories from instructions.)

POLITICS/GOVERNMENT

Period of Significance

1918-1967

Significant Dates

1918

Significant Person

(Complete only if Criterion B is marked above.)

Cultural Affiliation

Architect/Builder

US Reclamation Service

Statement of Significance Summary Paragraph (Provide a summary paragraph that includes level of significance, applicable criteria, justification for the period of significance, and any applicable criteria considerations.)

The Huntley Project Office is eligible for listing in the National Register at the local level of significance under Criterion A. In 1905, the U.S. Reclamation Service received approval to construct the Huntley Project, an irrigation project to allow agricultural development of an estimated 35,000 acres east of Billings, Montana. Over time, the operation of the Huntley Project transformed the sagebrush covered plains of this area of eastern Montana to farmland, and supported the development of thriving communities. The Huntley Project Office is the building from which, after 1918, Reclamation and then the Huntley Project Irrigation District conducted the daily business of operating the irrigation system. It is therefore an integral component of the project and its success.⁴

From late December 1918 to December 1927, the building served as Reclamation's headquarters office for the

⁴ In 1988, the Huntley Project was determined eligible for listing in the National Register by the Bureau of Reclamation in consensus with the MT SHPO under Criterion A as an important element in the settlement, development and economic growth of lands along the Yellowstone River in Montana east of Billings. The Huntley Project is also eligible under Criterion C for intact historic irrigation structures exhibiting original engineering of materials, design and workmanship. Information provided by Rick Hanson, Area Archaeologist, Montana Area Office, Bureau of Reclamation, Billings, MT.

Huntley Project Office

Name of Property

Yellowstone Co., MT

County and State

Huntley Project. In the nearly ten years as Reclamation headquarters, the office was “the central hub during any construction and subsequent project management.” The location of the headquarters camp in the centrally located town of Ballantine “established a strong Reclamation presence in the surrounding community and encouraged settlement and was crucial to operation and management activities.”⁵

Since 1928, when Reclamation transferred all Operation and Maintenance (O&M) to the Huntley Project Irrigation District, the office has continued to function in nearly the same capacity. The office and district yard are always in motion, the site from which District staff are solving maintenance and water delivery problems as they occur, keeping records of the project current, storing all the historic records and handling all other clerical and managerial issues.

The building’s period of significance starts with its initial use, and ends in 1967, the commonly-used National Register 50-year cutoff date.

Narrative Statement of Significance (Provide at least **one** paragraph for each area of significance.)

Early Irrigation Efforts in the Billings area

Early settlers recognized the promise of irrigation offered by the Yellowstone River, and its importance to the economic development of the region near Billings, Montana. The Northern Pacific Railway followed the Yellowstone River corridor, and its subsidiary, the Minnesota and Montana Land and Improvement Company, platted the townsite of Billings in 1882, which today is the largest city in Montana and the socio-economic center for eastern Montana. The following year, the same company developed the first private irrigation project in Billings to irrigate lands west and within Billings. The M & M Canal first conveyed water from the Yellowstone River in 1883, and in 1900 incorporated to become the “Big Ditch Company.”⁶

The next substantial irrigation project in the Billings area utilized the Carey Land Act of 1894. The Carey Land Act offered public lands to western states if the lands were “reclaimed” (irrigated) and settled within ten years. The actual development of the land typically was completed by private enterprise.

Under this act, prominent Billings businessmen Preston Moss, I. D. O’Donnell and Henry Rowley incorporated the Billings Land & Irrigation Company in 1903 to construct an irrigation project, called the “Billings Bench,” that conveyed water to lands primarily north and east of Billings with the Yellowstone River as its water source. This was one of three successful Carey Land Act irrigation projects in Montana.⁷

⁵ Christine E. Pfaff, “The Bureau of Reclamation’s Architectural Legacy: 1902-1955,” U.S Department of the Interior, Bureau of Reclamation, (Denver: Bureau of Reclamation, October 2007), 223 -224.

⁶ Robert G. Dunbar, “Agriculture,” in Merrill G. Burlingame and K. Ross Toole, *A History of Montana*, Vol. 1, (New York: Lewis Historical Publishing Company, Inc., 1957), 282.

⁷ The Billings Bench Water Association took over this project in 1920. Carroll Van West, “Creating an Irrigator’s Reclamation Service: I. D. O’Donnell, Civic Capitalism, and the U. S. Reclamation Service in the Yellowstone Valley, 1900;1930,” in *The Bureau of Reclamation: History Essays from the Centennial Symposium* Vol. 2, (Denver: Department of the Interior, Bureau of Reclamation, 2008), 9-10, accessed September 20, 2016,

<http://www.riversimulator.org/Resources/USBR/ReclamationHistory/WestCarrollVan.pdf> see also http://dnrc.mt.gov/divisions/water/water;rights/docs/survey;books/yellowstonecountyirrigationdistrict_1943.pdf.

Huntley Project Office

Name of Property

Yellowstone Co., MT

County and State

The overall Carey Land Act success was limited, as states and private developers did not have funds or expertise to construct large-scale irrigation projects. Western irrigation development interests, therefore, increased pressure on the federal government to establish a means by which the government would develop irrigation projects. The resultant Reclamation Act of 1902 authorized the federal government to locate and construct large-scale irrigation projects in the arid western states and territories. The Secretary of the Interior then created the U.S. Reclamation Service to design, construct, and manage these federal projects. Funding to construct projects would come from the sale of public lands. The Reclamation Act also required that project construction costs be repaid by the settlers, with those repaid funds going toward further construction. No tracts open to settlement could be larger than 160 acreages, to preserve the concept of family farms and curtail land speculation. The first federal irrigation project authorized in 1903 in Montana was the Milk River Project in northern Montana, and Reclamation authorized a total of four projects in Montana by 1920.⁸

Huntley Project

Local promoters in Billings saw great potential for a large-scale irrigation project on unsettled lands east of Billings and south of the Yellowstone River within the Crow Indian Reservation. Efforts to remove these lands from the Crow began in the mid-1890s, and in 1899 the Crow agreed to cede lands, but Congress never ratified the agreement. Passage of the Reclamation Act revived these efforts, resulting in an amended agreement with the Crow that ceded approximately 1,100,000 acres of land south of the Yellowstone and established the present-day Crow Reservation northern boundary. Approximately 30,000 acres fell within the Huntley Irrigation Project.⁹

In late April 1904, Congress approved the Crow cession and almost simultaneously approved the surveys and investigations of irrigable lands lying south of the Yellowstone River within the ceded area. By February 1905, Reclamation declared the project “workable” for early development with “an abundance of water, good climate and a local market for produce.”¹⁰ On April 18, 1905, Secretary of the Interior E. A. Hitchcock authorized the construction of the Huntley Project. Reclamation expected the project to irrigate up to 35,000 acres for a total estimated construction cost of \$900,000. Reclamation quickly established their project headquarters at Huntley, Montana, a small town on the western edge of the project area approximately eight miles east of Billings. Although experiencing construction problems similar to other irrigation projects,

⁸ Ibid, 10; Stanley W. Howard, *Green Fields of Montana A Brief History of Irrigation*, (Manhattan, KS: Sunflower University Press, 1992), 29, 31.

⁹ This agreement promised the Crow federal funds of \$1,150,000 for primarily agriculture purposes like irrigation systems, livestock, fencing, etc; See Agreement of 1904, Charles J. Kappler, ed., *Indian Affairs: Laws and Treaties*, 2 vols (Washington, DC: GPO, 1904), accessed October 22, 2016, <http://digital.library.okstate.edu/kappler/vol2/treaties>. For a detailed discussion of Crow Treaties, see Burton M. Smith, “Politics and the Crow Indian Land Cessions,” *Montana, the Magazine of Western History (MMWH)*, 36, no. 4 (Autumn 1986): 24-37.

¹⁰ William H. Hancock, “Huntley Project Irrigation District,” *Sod ‘N Seed ‘N Tumbleweed: A History of the Huntley Project, Yellowstone County, Montana*, Huntley Project History Committee, (Ballantine, MT: Frontier Press, 2003), 8, 13; Timothy Dick, “Huntley Project” (Denver: Bureau of Reclamation, 1996), 5; Reclamation, Great Plains Region, Multimedia, “The Huntley Project’s Rocky Childhood,” accessed October 25, 2016, <http://www.usbr.gov/gp/multimedia/archive/glimpse/huntley.html>,

Huntley Project Office

Name of Property

Yellowstone Co., MT

County and State

Reclamation advanced towards its goal to deliver water by 1907.¹¹

On May 21, 1907, President Theodore Roosevelt declared lands within the Huntley Project open for settlement. These lands consisted of 582 farm units of approximately 40 acres each with allowable additional lands totaling 160 in each unit. A lottery for lands within the Huntley Project attracted 5,491 individuals, although only 76 of the first 1000 chosen eventually completed the entire filing process. Regardless, Secretary of the Interior James A. Garfield traveled to Huntley by train and ceremoniously opened the gates that spilled the first water into the system on June 26, 1907. In July the project opened for settlement. The Huntley Project was the second Reclamation project in the nation to deliver water to farm units in April 1908. While only 4,100 acres received irrigation waters in 1908, by June 1909 the Huntley Project counted 311 filings within the project totaling about 19,000 acres, including 14,000 irrigable acres.¹²

The opening of the Huntley Project coincided with the beginning of the homesteading boom years in Montana. In 1909, the federal government enacted the Enlarged Homestead Act that provided 320 acres to any person willing to improve and farm it. The Act, combined with the 1862 Homestead Act, attracted thousands of dry land farmers to south central and eastern Montana between 1909 and 1918.

As the Huntley Project settlers largely came from the mid-west where ample rainfall resulted in little need for irrigation, most settlers had no experience with irrigation. They did not realize that Reclamation constructed the canals and laterals but did not construct the ditches necessary to convey water within the farm units themselves. When they arrived on their boxcars with all their worldly possessions, many remember a barren landscape of sagebrush and greasewood. The early settlers had to clear and burn all the vegetation, build a house (usually a tarpaper shack), and get acreage plowed, and planted, and fenced, and get a certain amount of acreage under irrigation in order to meet the requirements to 'prove' on their filing. Many lacked the savings to pay for these improvements and support themselves, and so supplemented their lean years by selling chickens, eggs, milk, and even watermelons. Many also took jobs off the homestead. Many settlers moved off their property, abandoning or selling their claims, allowing others to expand their holdings. The success of the Huntley Project depended on those settlers who persevered, adapted, and became successful irrigators. Today, the Huntley Project irrigates nearly 30,000 acres with primary crops being alfalfa and sugar beets.¹³

Huntley Project Irrigation District

The success of the project depended on cooperation between Reclamation and the irrigators, and one of the most important aspects of the success of the Huntley Project was the creation of the Huntley Project Irrigation District. After the construction phase of the project, generally completed by 1915, a "period of adjustment commenced." Huntley Project farmers first began to discuss forming an irrigation district in the late teens, and they organized the Huntley Project Irrigation District under Montana Law in July, 1921, the first step towards

¹¹ Ibid. Please refer to Dick, "The Huntley Project" for a detailed construction history of the Huntley Project.

¹² Ibid; U.S. Reclamation Service, *Eighth Annual Report of Reclamation Service 1908-1909*, (Washington, D.C: GPO, 1910), 98. The water released by Garfield only dampened the system while the first true delivery of water was in April 1908.

¹³ Numerous stories of the early years are found throughout the local history in Huntley Project History Committee, *Sod 'N Seed 'N Tumbleweed*.

Huntley Project Office

Name of Property

Yellowstone Co., MT

County and State

the “ultimate management of the Project.” After six years of at times contentious negotiations about drainage problems and repayment schedules, a contract was finally agreed upon. The United States transferred to the Huntley Project Irrigation District “the care, operation and maintenance of the irrigation and drainage works of the project, including canals, laterals, and structures on December 31, 1927.”¹⁴

E. E. Lewis started work on February 1, 1928 as superintendent of the irrigation district and remained in this position until 1943. His diary for his first year provides just a cursory view of the activities within the district. Lewis, who was employed by Reclamation at the Huntley project earlier in his career, spent most of his time out in the field rather than in the office, responding to various concerns and problems within the project. Howard S. Elliott served as his secretary/clerk performing “routine office work” and was at times assisted by Margaret Simek for typing. Both had previously worked for Reclamation, and Elliott stayed at the district until 1953. Lewis reported the ditch rider was always busy in the field necessitating other men to make repairs to district buildings and structures, under the direction of Foreman Fred Belter. Occasionally Reclamation personnel visited the district from western or Washington, D.C. offices. In addition to maintenance and operations, Lewis reported the district collected crop census information each fall.¹⁵

The Huntley Project Irrigation District is responsible for the operation and maintenance of the Huntley Project. The district office, as the administrative center of the Huntley Project Irrigation District, is the physical expression of a very large and active irrigation district responsible for the repair and replacement of all irrigation structures, cleaning and maintaining all canals, laterals and pumps, and repair and replacement of all major infrastructures within the project.¹⁶

The Huntley Project’s

. . . diversion dam is located on the Yellowstone River approximately ten miles downstream from Billings and serves land on the south side of the river. The Project works include a rockfill and concrete diversion dam in the Yellowstone River, 54 miles of canal, 202 miles of laterals, a hydraulic turbine-driven pumping plant, an auxiliary electric pumping plant, and Anita Reservoir, an off-stream storage facility.¹⁷

Huntley Project Office Construction

As previously stated, Reclamation located their first Huntley Project headquarters “camp” at Huntley, Montana in the eastern-most portion of the Huntley Project. Historic photographs of the headquarters show an alignment of one-story hipped roof buildings within a fenced area situated on the western outskirts of the

¹⁴ Contract Ilr;102 on file at Huntley Project Irrigation District Office, Ballantine, MT.

¹⁵ E. E. Lewis, diary on file at Huntley Project Museum of Irrigated Agriculture, Huntley, MT.

¹⁶ Today, most of the day-to-day administration of the Huntley Project Irrigation District is the responsibility of one individual who maintains all district paperwork. The office workload involves all bookkeeping, maintaining water rights information, land owner documents, creating maps and drawings, as well as serving as the repository for district records. The office no longer collects assessments from the land owners, which now go directly to the county. Liz Freeman, interview with Joan L. Brownell, Huntley Project Irrigation District Office, November 10, 2016, Ballantine, MT.

¹⁷ “Lewis and Clark: Early Projects and their Impacts.” Reclamation/Great Plains/Multimedia/, accessed October 25, 2016, <http://www.usbr.gov/gp/multimedia/archive/glimpse/huntley.html>,

Huntley Project Office

Yellowstone Co., MT

Name of Property

County and State

town. The buildings were located adjacent to a bend on the south bank of the Yellowstone River. Reclamation established the camp in 1905 where it remained until 1918.

This location choice proved disastrous in June 1918 when the Yellowstone River rapidly reached unprecedented flood levels up and down the river. The *Billings Gazette* reported the Reclamation headquarters buildings “are in imminent danger of being carried away.”¹⁸ On June 11, the Yellowstone at Huntley started to cut into the bank by the camp. Over the next few days, the river kept rising and attempts made to stop the erosion “was of no avail.” By Sunday, the river “had cut practically 150 feet from the back part of the camp,” forcing several cottages to be “rolled” away from the flooding.¹⁹

After the Yellowstone began to slowly recede, Reclamation assessed damages to the headquarters camp. Mr. Fifield, the Huntley Project Supervisor, reported the loss of one cottage and the ice house by the flooding:

After the destruction of this much of the headquarters camp it was thought advisable not to reconstruct the camp at Huntley, but to move headquarters to some more central location on the project About October 12th, authority was received to proceed with construction of the new headquarters buildings on Ballantine townsite.²⁰

Ballantine was first established by the Chicago, Burlington & Quincy Railway (formerly the Burlington & Missouri) that erected a station here in 1896 consisting of a boxcar for a depot, and a section house.²¹ This same location became the townsite of Ballantine, one of seven townsites surveyed and platted by Reclamation in 1907. The townsite of Ballantine consisted of eleven blocks set in the typical grid pattern north of the railroad right-of-way. When platting the townsite, Reclamation reserved all of Block One for their purposes.²² The Ballantine Post Office opened in July 1907, a month after the Huntley Project opened for settlement. An early 1907 photograph of Ballantine shows a water tank, some boxcars, scattered tents and tarpaper shacks.

Ballantine grew rapidly during the early years of the Huntley Project as it served as a trading center for settlers with its convenient location near the center of the project. By 1909, Reclamation reported that Ballantine had three stores, a lumber yard, a schoolhouse, a church, and a new railroad depot. In 1911, the town expanded further with a bank, elevator, and cooperative cheese factory.²³

By 1916, Ballantine had a thriving business community, including the Ballantine Drug Company, Ballantine Meat Market, Ballantine State Bank, Boschert Brothers Hardware store, McIntyre-Sanders Lumber Company, Hotel Olden, and the Van Pelt general store. The town also had a milliner, a blacksmith, a dentist, a movie

¹⁸ *Billings Gazette*, June 15, 1918.

¹⁹ E. E. Lewis diary, on file Huntley Project Museum of Irrigated Agriculture, Huntley, MT.

²⁰ U.S. Department of the Interior, United States Reclamation Service, *Huntley Project Montana, Annual Project History, 1918*, 66 (hereinafter referred to as Huntley Project History with appropriate date); A. R. Hubert McGinnis diary, on file Huntley Project Museum of Irrigated Agriculture, Huntley, MT.

²¹ An agreement between the Burlington and Northern Pacific allowed the Burlington to run the Northern Pacific tracks into Billings. The Burlington joined the Northern Pacific tracks just west of Huntley.

²² The other six towns were Huntley, Worden, Osborn, Anita, Newton and Pompeys Pillar. Three towns (Osborn, Anita and Newton) no longer exist.

²³ U.S. Reclamation Service, *Eighth Annual Report of Reclamation Service 1908;1909*, (Washington, D.C.: GPO, 1910), 99; J. Homer Hancock, “Ballantine,” unpublished manuscript on file at Sunnyside Library, Worden, MT.

Huntley Project Office

Name of Property

Yellowstone Co., MT

County and State

theatre, a billiard hall, a church, and a school.²⁴

Unfortunately, Ballantine experienced a devastating fire in August 1918 that destroyed much of its growing business district. A few months after this disaster, Reclamation approved the relocation of Reclamation headquarters to Ballantine. While this must have given encouragement to the community, the town never truly recovered, although many businesses rebuilt. Ballantine residents showed their commitment to their community in 1921 when they erected a community hall that still is in use today. The 1927 Sanborn Fire Insurance map for Ballantine shows the Reclamation yard, the community hall, a saloon, a grocery store, several garages, an Occident elevator, a lumber company, and numerous residences.²⁵ The town of Ballantine declined during the 1950s and 1960s, and today is primarily a residential community. Nevertheless, the Huntley Project Irrigation District office remains in Ballantine.²⁶

Two days after receiving approval for the relocation of the Huntley Project headquarters camp to Ballantine in October 1918, S. A. Balcher, a Reclamation employee, began excavation for the office foundation and basement. Almost immediately, construction work slowed when Mr. Balcher became ill, presumably with the flu, as the pandemic flu began to sweep across the nation. Locally, Yellowstone County experienced over 100 deaths by mid- November. A. R. McGinnis, Project Engineer, in his diary reported during this time that “workers hard to secure.” Supervisor Fifield confirmed this stating “the epidemic of influenza delayed the completion of the removal” from Huntley to Ballantine.²⁷

Reclamation generally utilized readily accessible lumber and presumably in this case obtained lumber from the local lumber yard in Ballantine. Materials could also be shipped via the railway from Billings. Reclamation hired local men as day laborers for the construction, supervised by a Reclamation employee.²⁸

The new headquarters camp site plan or “layout,” approved by Supervisor Fifield, identifies the Reclamation office in the northwest corner of the Reclamation yard. The building dimensions are 28 feet by 36 feet with a rectangular projection off the east wall (but not identified as the vault). The plan shows three cottages aligned south of the office (although only two were erected). The site plan also shows several outbuildings, some of which are extant today.²⁹

While Reclamation constructed the new headquarters office on site in Ballantine, they moved two buildings to Ballantine from the Huntley headquarters to serve as the Project Manager’s and Chief Clerk’s dwellings. In December 1918, Ike Parrish, a house mover from Billings, took almost three days to move each building, using a heavy steam tractor engine that reportedly handled “the work easily.” The Huntley camp dormitory

²⁴ R. L. Polk and Company, *Directory of Billings and Red Lodge Yellowstone, Carbon, Stillwater and Big Horn Counties*, (Helena, MT: R. L. Polk, 1916), 162.

²⁵ Sanborn Fire Insurance Company, *Ballantine, MT, 1927*, accessed September 12, 1916, www.sanborn.uni.com.

²⁶ *Sod ‘N Seed ‘N Tumbleweed*, 64. In the 1930s, Reclamation established a Civilian Conservation Camp south of Ballantine whose young men worked constructing the Anita Dam within the Huntley Project. This same camp later became a Prisoner of War Camp in the 1940s.

²⁷ A. R. McGinnis diary; *Huntley Project History, 1918*, 67.

²⁸ Pfaff, “Bureau of Reclamation’s Architectural Legacy,” 56, 63.

²⁹ US Department of the Interior, United States Reclamation Service, “Huntley Project – Mont Layout of Camp Headquarters Ballantine,” H879, 10-30-18, on file, Huntley Project Irrigation District Office, Ballantine, MT.

Huntley Project Office

Name of Property

Yellowstone Co., MT

County and State

was moved and remodeled as the Chief Clerk's dwelling. The Project Engineer's cottage was also moved and remodeled to become the Project Manager's dwelling. The other building transported was the storehouse, which Reclamation doubled in size at Ballantine.³⁰

The headquarters office in Ballantine officially opened to the public on January 4, 1919, although the *Reclamation Era* reported it was open for business the day after Christmas. Work continued during January and February on two employee cottages and various outbuildings. By March, all buildings were completed with the exception of painting and other minor details. The entire block initially was fenced with woven wire and three strands of barbed wire. The first attempts at landscaping by planting grass seed failed due to dry hot weather. By the summer of 1919, all buildings had been painted and "the entire layout was finished in all details." The total cost of the headquarters camp, also called the Ballantine O & M Camp, totaled \$17,095.89.³¹

An April 1919 inventory described the newly constructed project office. The building was one-story with four rooms, had plastered walls, a shingled roof, wood flooring and one brick chimney. A hot air furnace provided heating and gas lamps provided lighting. The office was swept every day. The cost of the office totaled \$5018.72 and interior improvements such as furniture and fixtures totaled \$1000.00.³²

Unfortunately, no drawing for the Huntley Project Office at Ballantine has been located, although all drawings for other buildings at the camp are available at the project office. The only direct official reference to the office was an index card discovered in a card file in the vault. This card reads:

Ballantine Headquarters Office Headquarters H-873 10-29-'18
(Frannie Div Office Building at Denver)

The H-873 number is in sequence with all the other drawings for new buildings at the new headquarters camp in Ballantine. Possibly due to the circumstances caused by the 1918 flood and need for an office to conduct business, Reclamation expedited efforts to construct a new headquarters office and bypassed established procedures.³³

Many locals believe Reclamation relocated the Ballantine office from either the original headquarters camp in Huntley or elsewhere within the Huntley Project. However, the 1918 diary of Mr. Kneales of Reclamation clearly demonstrates the project office was built on site. From October 12 to 16, 1918, Mr. Kneales wrote that "a crew of about 7 men, 1 team and 2 carpenter [sic] worked on the foundation at the new government buildings at Ballantine." By November 2, they were framing the office building and a few days later, the carpenters set up window frames. From November 8 through 13, they worked on the office "framing, sheeting and shingling."³⁴

³⁰ *Huntley Project History* 1918, 67; Lewis diary.

³¹ *Huntley Project History* 1919, 74.

³² *Ibid.*, "Insurance Survey," 8.

³³ No such number has been found in the Reclamation's data base. The Shoshone Project Irrigation District Office personnel in Wyoming also could not locate either a drawing or photograph of the Frannie Division office (Frannie is still a field office). Further research in Reclamation records in the National Archives is necessary to hopefully locate the district office drawing.

³⁴ Unfortunately, the last three diary entries do not mention the office. Kneales 1918 diary, on file, Huntley Project Irrigation

Huntley Project Office

Name of Property

Yellowstone Co., MT

County and State

After Reclamation relocated to Ballantine, most buildings left at the Huntley headquarters were sold at public auction in May 1919, except for the old office building and a bunkhouse. In June 1919, William Kinnick, who briefly owned a hotel and livery stable in Huntley, purchased these two buildings.³⁵

Reclamation Project Engineer McGinnis reported in his diary that “in due time five new buildings were erected, consisting of office, Storehouse, garage for four cars, barn and blacksmith shop; two cottages and old storehouse were moved from Huntley.” G. H. Bolt, Chief Clerk, also reported the new headquarters camp consisting of a “new office building, garage, blacksmith shop, storehouse and sewer and water system was being constructed...”³⁶

A ca 1919 historic photograph shows the newly constructed headquarters office. It is nearly identical to the present day condition of the office, missing just a few details, such as concrete steps and landscaping features. A later historic photograph of the Lewis family in front of their cottage shows the project office in the background looking much like it looks today.³⁷

A 1920 historic photograph in front of the newly constructed office identifies a staff of six people at the Huntley Project Reclamation headquarters that included the project manager, water record clerk, engineer, special fiscal agent, costkeeper, and the chief clerk. The project manager was “responsible for the “economic and efficient administration of the project affairs.” The chief clerk was “responsible for all accounting work and in charge of project headquarters buildings.” Work in the office consisted of preparation of reports, project histories, crop reports, project maps, and monthly project reports.³⁸

The historic engineering structures within historic irrigation systems, like the Huntley Project, are rapidly changing with new technologies. The Huntley Project Office reflects its original appearance and character, and still serves its original function for the irrigation district since its original construction in 1918, by administrating the operation and maintenance of the project itself. Historian Carroll Van West visited the project office in Ballantine in 2015 and found “amazingly the very simple form vernacular building that houses the project’s office still stands, a little building that really conveys a huge story of a federal program that transformed a region.”³⁹

District Office, Ballantine, MT.

³⁵ *Huntley Project History 1919*, 30; William Walter Kinnick Family Story, accessed October 24, 2016, <http://homepages.rootsweb.ancestry.com>.

³⁶ McGinnis diary; *Huntley Project History 1919*, 21; *Huntley Project History 1920*, 20.

³⁷ Photograph on file, Huntley Project Irrigation District Office, Ballantine, MT; Hubert E. Lewis album, on file Huntley Project Museum of Irrigated History, Huntley, MT.

³⁸ Photograph on file, Huntley District Irrigation Office, Ballantine, MT; U.S. Bureau of Reclamation, *Manual of the Bureau of Reclamation*, (Washington, D.C: GPO, 1939).

³⁹ Carroll Van West, “Revisiting Montana’s Historic Landscape 30 Years in the Big Sky Country,” accessed Oct 15, 2016, <https://montanahistoriclandscape.com/2015/03/09/billings;heart;of;the;midland;empire/>.

Huntley Project Office
Name of Property

Yellowstone Co., MT
County and State

9. Major Bibliographical References

Bibliography (Cite the books, articles, and other sources used in preparing this form.)

Billings Gazette, June 15, 2018; May 15, 2015.

Dick, Timothy A. *Huntley Project*. Report prepared for Bureau of Reclamation, 1996.

Dunbar, Robert G. "Agriculture" in Merrill G. Burlingame and K. Ross Toole. *A History of Montana* Vol. 1, New York: Lewis Historical Publishing Company, Inc.

Freeman, Liz. Interviews with Joan L. Brownell, August- December 2016, Ballantine, MT.

Hancock, J. Homer. "Ballantine." unpublished manuscript on file at Sunnyside Library, Worden, MT.

Hanson, Rick. Interviews with Joan L. Brownell. August-November 2016, Billings, MT.

Howard, Stanley W. *Green Fields of Montana: A Brief History of Irrigation*. Manhattan, KS: Sunflower University Press, 1992.

Huntley Project History Committee. *Sod 'N Seed 'N Tumbleweed A History of the Huntley Project, Yellowstone County, Montana*. Ballantine, MT: Frontier Press, 2003.

Kappler, Charles J, editor. *Indian Affairs, Laws and Treaties, 2 vols*. Washington, D.C.: Government Printing Office, 1904.

Kordecki, Cynthia, Mary McCormick, Carrie F. Jackson, and Jennifer Bales. *Lower Yellowstone Irrigation Project, 1996 and 1997 Cultural Resource Inventory, Dawson and Richland Counties, Montana, and McKenzie County, North Dakota*. Report prepared for US Bureau of Reclamation, Montana Project Office, Billings, MT, April 2000.

Lang, William L., editor. *Stories from an Open Country /Essays on the Yellowstone River Valley*. Billings, MT: Western Heritage Press, 1995.

Lewis, E. E. Diary on file at Huntley Project Museum of Irrigated History, Huntley, MT.

Malone, Michael, Richard Roeder, and William L. Lang. *Montana: A History of Two Centuries*. Seattle, WA: University of Washington Press, 1991.

McGinnis, A. R. Diary on file Huntley Project Museum of Irrigated History, Huntley, MT.

Montana State Engineer's Office, *Irrigation Districts, Yellowstone County, MT*. Billings, MT: Billings Commercial Club, 1943.

Pfaff, Christine E. *The Bureau of Reclamation's Architectural Legacy: 1902-1955*. Denver, CO: U.S. Department of the Interior, Bureau of Reclamation, 2007.

Polk, R. L and Company. *Directory of Billings and Red Loge Yellowstone, Carbon, Stillwater and Big Horn Counties 1916*. Vol, 8, Helena, MT: R. L. Polk, 1916.

Queen, Rolla. "Inventory and Assessment of a Residential Property Located on the Huntley Project, Huntley,

Huntley Project Office
Name of Property

Yellowstone Co., MT
County and State

Montana.” Report Prepared for Bureau of Reclamation, July 1994.

Reclamation Era. Various years to 1950.

Reclamation Record. 1918-1919.

Sanborn Fire Insurance Company. *Ballantine, Mont 1927*. <http://www.sanborn.umi.com>.

Smith, Burton M. “Politics and the Crow Indian Land Cessions,” *Montana the Magazine of Western History* 36 (Autumn 1986), 24-37.

U.S. Department of the Interior. Bureau of Reclamation. <http://www.usbr.gov/history/>.
Reclamation History
The Bureau of Reclamation A Very Brief History
The Huntley Project's Rocky Childhood
Lewis and Clark: Early Projects and their Impacts

U.S. Department of the Interior. Bureau of Reclamation. *Huntley Project*. www.usbr.gov/projects.

U.S. Department of the Interior, U.S. Reclamation Service, *Eighth Annual Report of Reclamation Service 1908-1909*, Washington, DC: Government Printing Office, 1910.

U.S. Department of the Interior. U.S. Bureau of Reclamation. Annual Project Histories for Huntley Project 1918-1928. On file, Bureau of Reclamation Library, Bureau of Reclamation Regional Office, Billings MT.

U.S. Reclamation Service maps on file Huntley Project District Office, Ballantine, MT.

U.S. Reclamation Service photographs on file Huntley Project District Office, Ballantine, MT.

Van West, Carroll. “Creating an irrigator’s Reclamation Service: I. D. “Bud” O’Donnell, Civic Capitalism, and the U.S. Reclamation Service in the Yellowstone Valley, 1900-1930.” *Bureau of Reclamation: Historic Essays from the Centennial Symposium Vol.2*. Denver, Department of Interior, Bureau of Reclamation, 2008. Accessed September 20, 2016.
[Http://www.riversimulator.org/Resources/USBR/Reclamation/History/WestCarrollVan.pdf](http://www.riversimulator.org/Resources/USBR/Reclamation/History/WestCarrollVan.pdf)

_____. Revisiting Montana’s Historic Landscape 30 years in the Big Sky County. Accessed September-October 2016, <http://montanahistoriclandscape.com>

Yaekel, Larry. Interview with Joan L. Brownell, August 30, 2016, Ballantine, MT.

Huntley Project Office
Name of Property

Yellowstone Co., MT
County and State

Previous documentation on file (NPS):

- preliminary determination of individual listing (36 CFR 67) has been requested
- previously listed in the National Register
- previously determined eligible by the National Register
- designated a National Historic Landmark
- recorded by Historic American Buildings Survey # _____
- recorded by Historic American Engineering Record # _____
- recorded by Historic American Landscape Survey # _____

Primary location of additional data:

- State Historic Preservation Office
 - Other State agency
 - Federal agency
 - Local government
 - University
 - Other
- Name of repository: Bureau of Reclamation

Historic Resources Survey Number (if assigned): _____

10. Geographical Data

Acreege of Property less than one acre

Use either the UTM system or latitude/longitude coordinates

Latitude/Longitude Coordinates (decimal degrees)

Datum if other than WGS84: _____

(enter coordinates to 6 decimal places)

1. Latitude: 45.950160 Longitude: -108.144920

Huntley Project Office
Name of Property

Yellowstone Co., MT
County and State

Verbal Boundary Description (Describe the boundaries of the property.)

NE1/4SW1/4 , Section 5, T2N, R29E, Lots15-16, Block 1, Original Plat Ballantine, MT The boundary is comprised of the Huntley Project Office building and the associated yard extending to the sidewalk along 2nd Street West, to the north edge of the grass yard to Cane Street and to the extent of the grass lawn to the rear (east) of the building, and a small buffer between the south office wall and a parking area. The south boundary follows a low concrete retaining wall to the 2nd Street West sidewalk.

Boundary Justification (Explain why the boundaries were selected.)

The boundary encompasses the footprint of the Huntley Project Office and the associated yard and landscaping extending to include sidewalks, walkways, flagpole base, an original fence concrete pier, a low concrete retaining wall and a row of junipers north of the office. On the south, the parking area was created after the houses and their associated landscape was removed; the parking area does not represent the historic use. The Huntley Project Office nomination is part of a mitigation agreed upon by the Bureau of Reclamation, the Federal Emergency Management Agency (FEMA), and the Montana State Historic Preservation Office (SHPO) in a September 2011 Memorandum of Agreement. No other buildings were included in this agreement.

11. Form Prepared By

name/title: Joan L. Brownell
organization: Headwaters Cultural Research
street & number: PO Box 600
city or town: state: Fishtail, MT
zip code: 59028
date: February 2017

name/title: Revisions by Rick Hanson, Lynne MacDonald and George Herbst
organization: Bureau of Reclamation
street & number: PO Box 30137
city or town: state: Billings, MT
zip code: 59107
date: February 2017

Huntley Project Office
Name of Property

Yellowstone Co., MT
County and State

Additional Documentation

Submit the following items with the completed form:

- **Maps:** A **USGS map** or equivalent (7.5 or 15 minute series) indicating the property's location.
- **Sketch map** for historic districts and properties having large acreage or numerous resources. Key all photographs to this map.
- **Additional items:** (Check with the SHPO, TPO, or FPO for any additional items.)

Please see Continuation Sheets

Photographs

Submit clear and descriptive photographs. The size of each image must be 1600x1200 pixels (minimum), 3000x2000 preferred, at 300 ppi (pixels per inch) or larger. Each photograph must be numbered and that number must correspond to the photograph number on the photo log. For simplicity, the name of the photographer, photo date, etc. may be listed once on the photograph log and doesn't need to be labeled on every photograph.

Photo Log

Name of Property:

City or Vicinity:

County: State:

Photographer:

Date Photographed:

Description of Photograph(s) and number, include description of view indicating direction of camera:

1 of ____.

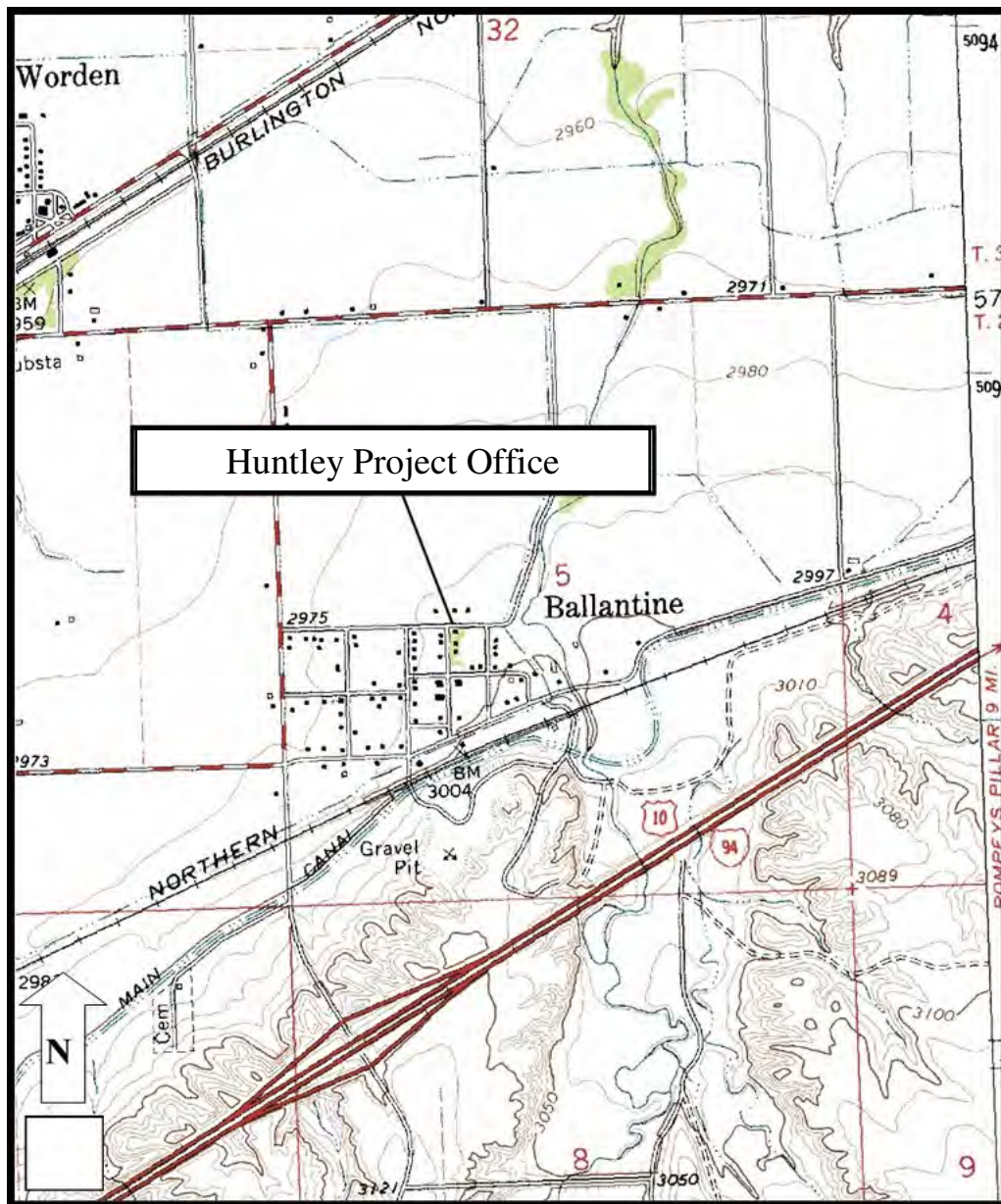
Please see Continuation Sheets

Paperwork Reduction Act Statement: This information is being collected for applications to the National Register of Historic Places to nominate properties for listing or determine eligibility for listing, to list properties, and to amend existing listings. Response to this request is required to obtain a benefit in accordance with the National Historic Preservation Act, as amended (16 U.S.C.460 et seq.).

Estimated Burden Statement: Public reporting burden for this form is estimated to average 100 hours per response including time for reviewing instructions, gathering and maintaining data, and completing and reviewing the form. Direct comments regarding this burden estimate or any aspect of this form to the Office of Planning and Performance Management, U.S. Dept. of the Interior, 1849 C. Street, NW, Washington, DC.

Huntley Project Office
Name of Property

Yellowstone Co., MT
County and State



Location of the Huntley Project Office
Found on the Worden 7.5 quadrangle map
T2N E29E NE1/4 SW1/4 of Section 5

Huntley Project Office
Name of Property

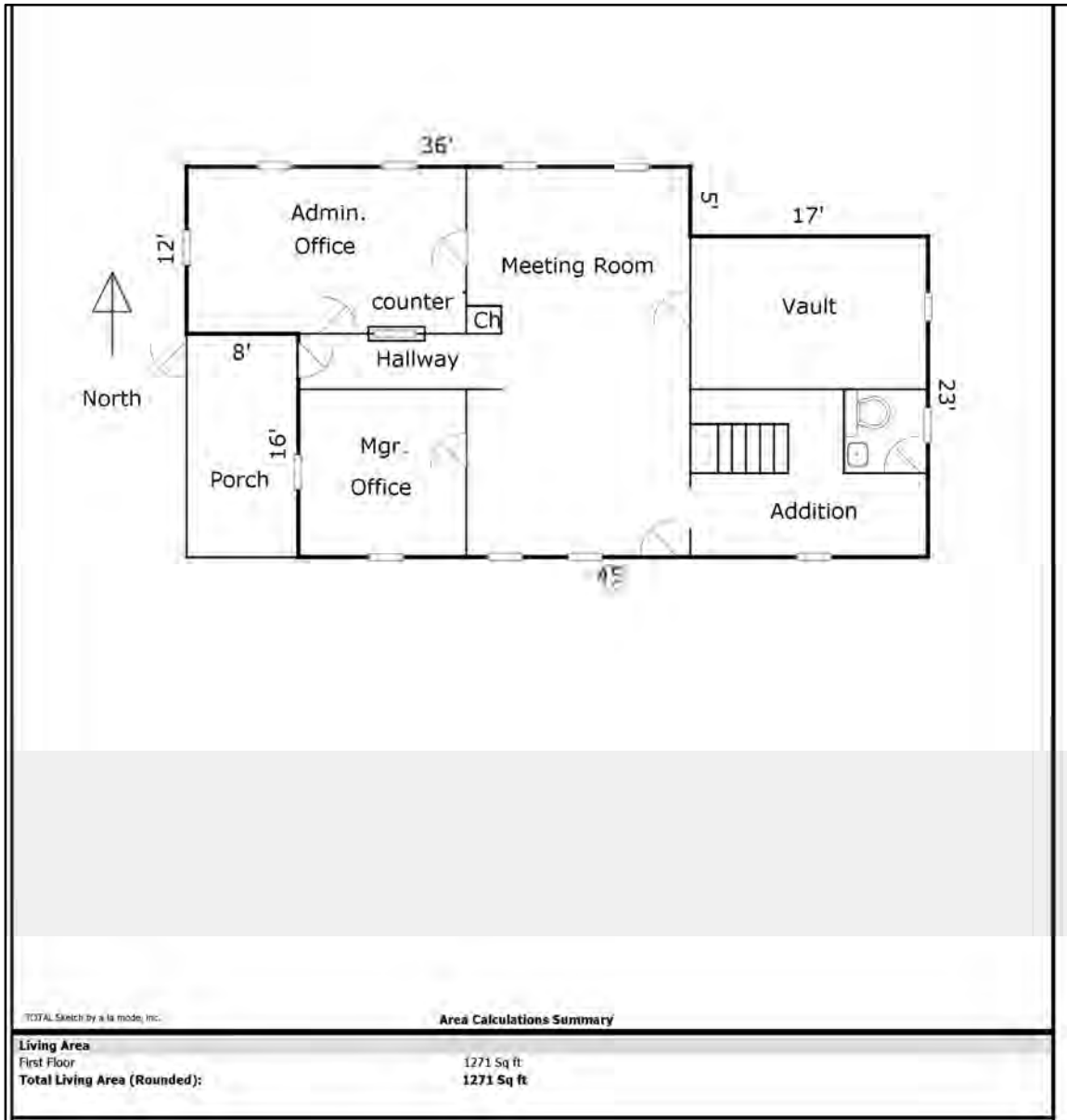
Yellowstone Co., MT
County and State



Location of the Huntley Project Office
Aerial view
T2N E29E NE1/4 SW1/4 of Section 5

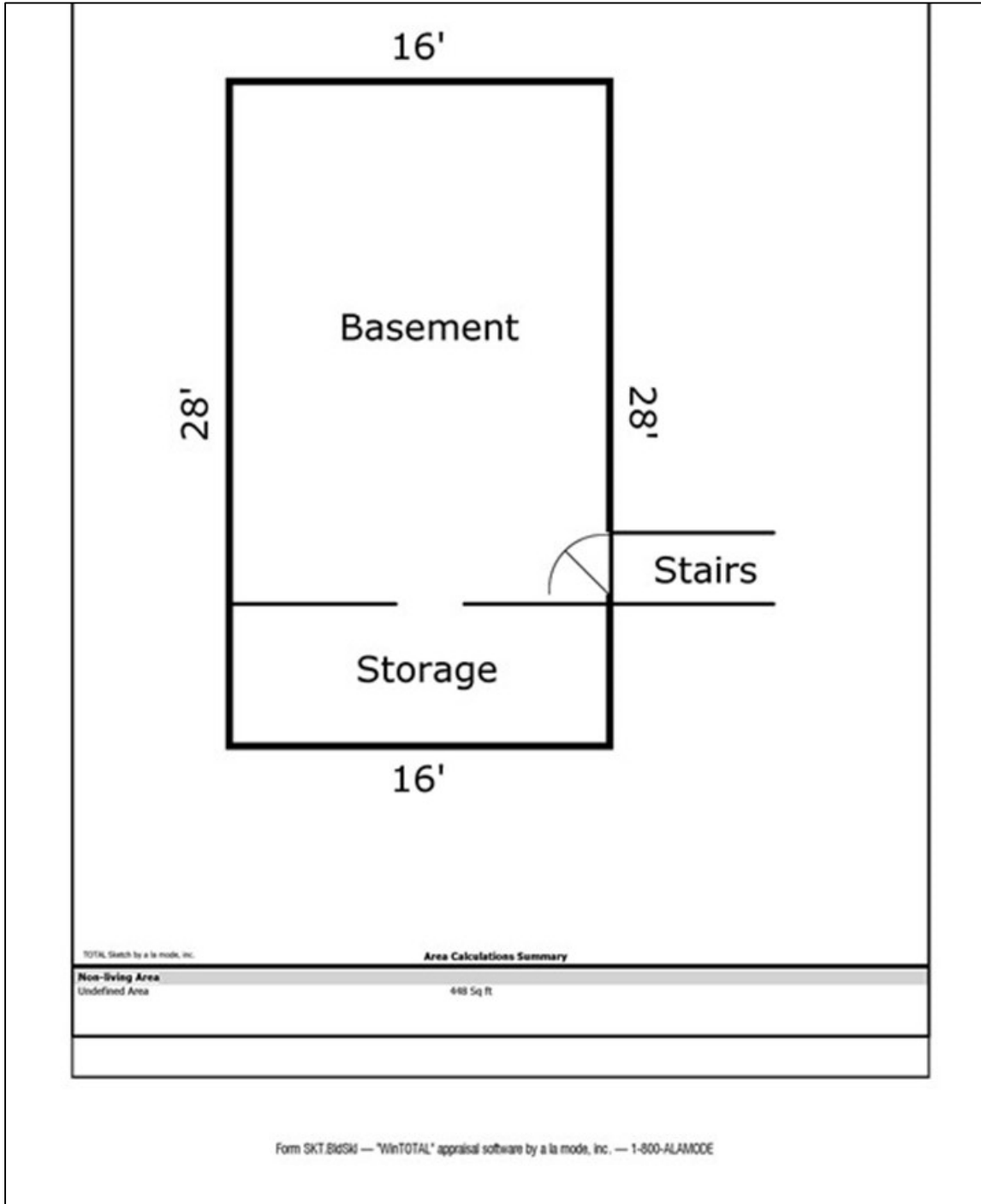
Huntley Project Office
Name of Property

Yellowstone Co., MT
County and State



Huntley Project Office
Name of Property

Yellowstone Co., MT
County and State



Huntley Project Office
Name of Property

Yellowstone Co., MT
County and State

All Photos

National Register Photographs

Name:	Huntley Project Office
County and State	Yellowstone County, Montana
Photographer	Joan L. Brownell
Date of Photograph	September 2016
Location of original negative/digital image	Montana State Historic Preservation Office, Helena, MT;
	Bureau of Reclamation, Montana Area Office, Billings MT.

Description and view of camera: South and West elevations, view to north/northeast

Photograph: MT_YellowstoneCounty_HuntleyProject Office_0001

Description and view of camera: West elevation (façade), view to east

Photograph: MT_YellowstoneCounty_HuntleyProject Office_0002

Description and view of camera: North and West elevation, view to southeast

Photograph: MT_YellowstoneCounty_HuntleyProject Office_0003

Description and view of camera: North and East elevations, view to southwest

Photograph: MT_YellowstoneCounty_HuntleyProject Office_0004

Description and view of camera: South and East elevation, view to northwest

Photograph: MT_YellowstoneCounty_HuntleyProject Office_0005

Description and view of camera: Streetscape, view to southeast

Photograph: MT_YellowstoneCounty_HuntleyProject Office_0006

Description and view of camera: Interior, counter, view to northeast

Photograph: MT_YellowstoneCounty_HuntleyProject Office_0007

Historic Photographs

Huntley Project Headquarters Office, Ballantine, MT, circa 1919, (R- Courtesy Huntley Project Irrigation District)

Photograph: MT_YellowstoneCounty_Huntley Project Office_0008

Reclamation employees in front of Huntley Project Headquarter Office, Ballantine, MT, circa 1920 (R- Courtesy Huntley Project Irrigation District)

Photograph: MT_YellowstoneCounty_Huntley Project Office_0009

Superintendent E. E. Lewis Family in front of Reclamation Cottage with Huntley Project Headquarter Office in background, circa 1930s (R-Courtesy Huntley Project Museum of Irrigated Agriculture)

Photograph: MT_YellowstoneCounty_Huntley Project Office_0010

Huntley Project Office
Name of Property

Yellowstone Co., MT
County and State



Description and view of camera: South and West elevations, view to north/northeast
Photograph: MT_YellowstoneCounty_HuntleyProject Office_0001

Huntley Project Office
Name of Property

Yellowstone Co., MT
County and State



Description and view of camera: West elevation (façade), view to east
Photograph: MT_YellowstoneCounty_HuntleyProject Office_0002

Huntley Project Office
Name of Property

Yellowstone Co., MT
County and State



Description and view of camera: North and West elevation, view to southeast
Photograph: MT_YellowstoneCounty_HuntleyProject Office_0003

Huntley Project Office
Name of Property

Yellowstone Co., MT
County and State



Description and view of camera: North and East elevations, view to southwest
Photograph: MT_YellowstoneCounty_HuntleyProject Office_0004

Huntley Project Office
Name of Property

Yellowstone Co., MT
County and State



Description and view of camera: South and East elevation, view to northwest
Photograph: MT_YellowstoneCounty_HuntleyProject Office_0005

Huntley Project Office
Name of Property

Yellowstone Co., MT
County and State



Description and view of camera: Streetscape, view to southeast
Photograph: MT_YellowstoneCounty_HuntleyProject Office_0006

Huntley Project Office
Name of Property

Yellowstone Co., MT
County and State



Description and view of camera: Interior, counter, view to northeast
Photograph: MT_YellowstoneCounty_HuntleyProject Office_0007

Huntley Project Office
Name of Property

Yellowstone Co., MT
County and State



Huntley Project Headquarters Office to left, Ballantine, MT, circa 1919,
(R- Courtesy Huntley Project Irrigation District)
Photograph: MT_YellowstoneCounty_HuntleyProject Office_0008

Huntley Project Office
Name of Property

Yellowstone Co., MT
County and State



Reclamation employees in front of Huntley Project Headquarter Office, Ballantine, MT,
circa 1920,
(R- Courtesy Huntley Project Irrigation District)
Photograph: MT_YellowstoneCounty_HuntleyProject Office_0009

Huntley Project Office
Name of Property

Yellowstone Co., MT
County and State



Superintendent E. E. Lewis Family in front of Reclamation Cottage with Huntley Project
Headquarter Office in background, circa 1930,
(R- Courtesy Huntley Project Museum of Irrigated Agriculture)
Photograph: MT_YellowstoneCounty_HuntleyProject Office_0010



NO
TRESPASSING



OFFICE
UNITED STATES
ICELANDIC SERVICE

UNION
S. H. L.
1900









WATER ORDERS
COLLECTIONS
TIME CHECKS
INFORMATION









UNITED STATES DEPARTMENT OF THE INTERIOR
NATIONAL PARK SERVICE

NATIONAL REGISTER OF HISTORIC PLACES
EVALUATION/RETURN SHEET

Requested Action:

Property Name:

Multiple Name:

State & County:

Date Received: Date of Pending List: Date of 16th Day: Date of 45th Day: Date of Weekly List:

Reference number:

Nominator:

Reason For Review:

Accept Return Reject Date

Abstract/Summary Comments:

Recommendation/ Criteria

Reviewer Edson Beall Discipline Historian

Telephone _____ Date _____

DOCUMENTATION: see attached comments : No see attached SLR : No

If a nomination is returned to the nomination authority, the nomination is no longer under consideration by the National Park Service.

Comments



Fwd: Huntley District Office

1 message

Hanson, Rick <rdhanson@usbr.gov>
To: "MacDonald, Lynne" <lmacdonald@usbr.gov>

Tue, Jan 31, 2017 at 3:13 PM

FYI

----- Forwarded message -----

From: Hanson, Rick <rdhanson@usbr.gov>
Date: Tue, Jan 31, 2017 at 3:11 PM
Subject: Re: Huntley District Office
To: "Boughton, John" <JBoughton@mt.gov>, Joan Brownell <jlbrownell@nemont.net>

Hello John and Joan,

Thanks much and thank you to the review board. I've sent this to our Denver office and when I get it back I will send it to Joan to work on incorporating the review board comments and our final comments.

We can discuss how to proceed, after the final changes, when you get a chance John.

Thanks and please let me know if either of you have any questions.

Rick

On Mon, Jan 30, 2017 at 3:34 PM, Boughton, John <JBoughton@mt.gov> wrote:

Hello Rick and Joan,

Glad to see the both of you a week or so ago. Another well written and presented nomination Joan.

I attached (though you both should have it) the latest/greatest version of the nomination that the review board looked at, just in case any little changes occurred to any other drafts you might have...

Here are the comments from the review board meeting for the Huntley Project Office.

First up are the comments I took during the meeting:

Huntley Project Office (Ballantine)

Historian Joan Brownell prepared and presented the nomination. The federally-owned Bureau of Reclamation property, was presented as significant under Criterion A.

Questions and Comments from the Review Board:

- Floorplan map, page 26, change the "Admin. Office" label to reflect the room's present use and to agree with text.
- Any idea of the original shingle color? [No].
- Were plans located indicating this was a standard design? Could it be listed under Criteria C? [No standard plans were found. While some plans exist, the Huntley Project Office building does not follow them exactly. An argument to list the building under Criterion C would be much weaker than listing it under Criterion A].

- The term “No Style” was used to describe the architectural style. “Vernacular” would be better. [The term “No Style” is one of the categories proffered in National Register Bulletin 16].
- Are the floors original? [Yes].
- Elaborate on the changes to the basement and staircase with the construction of the addition.
- Please show where the “payment pass-through window” is located on the floorplan.
- Correct the date when Carroll Van West visited the building (2015, not 1915).
- Mr. Hanson of the Bureau of Reclamation explained to the Review Board that the nomination of the Huntley Project Office occurred under a Memorandum of Agreement between the Bureau of Reclamation and the Montana State Historic Preservation Office.

Dr. Urbaniak moved for the nomination to be forwarded to the Keeper of the National Register with the suggested edits. The move was seconded by Ms. Walter. The Review Board unanimously concurred.

And Riley Auge’s comments/edits:

Huntley Project Office

Page 7: line 7--remove apostrophe (... its ceiling...)

Page 7: lines 12-13—insert commas (The office stands in its original location since its 1918 construction, and the immediate setting for this building is undisturbed, although it lacks original...)

Page 7: lines 20-24—insert commas (... replacement window units in some windows, and the replacement side door with its projecting hipped roof hood. The rear addition, constructed in the 1980s, is not overly intrusive due to its low profile and its location in the rear of the building. The Huntly Project office strongly retains its ability to reflect its historic appearance and character, and the changes do not affect its overall integrity.)

Page 11: line 2—insert commas (... development interests, therefore, increased...)

Page 11: line 6—change ‘construction’ to ‘construct’ (... US Reclamation Service to design, construct, and manage...)

Page 11: line 11—insert comma (... Project in northern Montana, and Reclamation...)

Page 11: line 15—insert commas (... in the mid-1890s, and in 1899 the Crow agreed to cede lands, but Congress never...)

Page 12: line 18—add ‘s’ (... arrived on their boxcars...)

Page 12: line 31—insert comma (... irrigation district in the late teens, and they...)

Page 13: line 9—insert comma (... worked for Reclamation, and Elliott stayed...)

Page 14: line 15—change ‘who’ to ‘that’ (... Missouri) that erected a station here...)

Page 15: line 4—remove redundant phrase (A few months after this disaster, Reclamation approved the relocation of Reclamation headquarters to Ballantine.)

Page 15: line 5—insert comma (... the town never truly recovered, although many...)

Page 15: line 9—insert comma (... during the 1950s and 1960s, and today is ...)

Page 16: line 4—insert comma (... public on January 4, 1919, although the...)

Page 16: line 15—insert ‘such’ (... interior improvements such as furniture...)

Page 16: line 16—insert comma (... Ballantine has been located, although all drawings...)

So that is it. When the changes are made Rick, we could chat to see how you want to proceed. For most nominations, our office pulls together the digital images, etc. and forwards it to the Federal Preservation Officer with a cover letter to forward to the Keeper, but the BOR seems to do things a bit differently. I may not need to do that if the BOR takes it from here... let me know.

John

John Boughton
NR Program
State Historic Preservation Office
Montana Historical Society
1301 E. Lockey Avenue
Helena, MT 59620
(406) 444-3647



Local
Government
Review
Hanson, Rick <rdhanson@usbr.gov>

RE: comments from the YHPB

1 message

Boughton, John <JBoughton@mt.gov>
To: "Hanson, Rick" <rdhanson@usbr.gov>

Tue, Mar 7, 2017 at 2:29 PM

Hi Rick,

Here are the comments from the Yellowstone Historic Preservation Board.

That should be about it for the comments.

If you need anything else, let me know. So what do you plan on listing next? 😊

John

----- Forwarded message -----

From: "Mattox, Lora" <MattoxL@ci.billings.mt.us>
To: "Ed Saunders" <saundersee@yahoo.com>
Cc: Allen Rapacz <allen@schutzfoss.com>, "Boughton, John" <JBoughton@mt.gov>, "Blain Fandrich (bfandrich@ethnoscience.com)" <bfandrich@ethnoscience.com>, Elisabeth <elisabeth@ywhc.org>, Judy Goldsby <msinmontana@yahoo.com>, Kevin Kooistra <kevin@ywhc.org>, Kevin Nelson <archmedtech@gmail.com>, Kevin Nelson2 <kevinn@ctagroup.com>, Nancy Curriden <ncurriden@bresnan.net>, Tracy Livingston <livtleah1@hotmail.com>
Bcc:
Date: Wed, 23 Nov 2016 15:09:30 +0000
Subject: RE: Huntley Irrigation Building - Ballantine NR Review

Good question. I will forward your comment to SHPO.

Thanks!

*Lora Mattox, AICP
Transportation Planner, Planner II
Historic Preservation Officer
Planning & Community Services Department
2825 3rd Avenue North, 4th Floor
Billings, MT 59101
Phone: 406-247-8622
Fax: 406-657-8327*

On Monday, November 21, 2016 8:39 AM, "Mattox, Lora" <MattoxL@ci.billings.mt.us> wrote:

Good Morning YHPB,

Please find attached a National Register Nomination for the Huntley Irrigation Office Building in Ballantine. Please let me know if you have any comments you would like submitted to SHPO.

Thank you,

Lora Mattox, AICP

Transportation Planner, Planner II

Historic Preservation Officer

Planning & Community Services Department

2825 3rd Avenue North, 4th Floor

Billings, MT 59101

Phone: 406-247-8622

Fax: 406-657-8327



Follow Us on Facebook:

<https://www.facebook.com/Billings-City-County-Planning-Division-1738982159659260/>

<https://www.facebook.com/YellowstoneHistoricPreservationBoard/>



Historic Preservation Officer

Planning & Community Services Department

2825 3rd Avenue North, 4th Floor

Billings, MT 59101

Phone: 406-247-8622

Fax: 406-657-8327



Follow Us on Facebook:

<https://www.facebook.com/Billings-City-County-Planning-Division-1738982159659260/>

<https://www.facebook.com/YellowstoneHistoricPreservationBoard/>



----- Forwarded message -----

From: Kevin Kooistra <kevin@ywhc.org>

To: "bfandrich@ethnoscience.com" <bfandrich@ethnoscience.com>, "Mattox, Lora" <MattoxL@ci.billings.mt.us>, "Ed Saunders" <saundersee@yahoo.com>

Cc: Allen Rapacz <allen@schutzfoss.com>, "Boughton, John" <JBoughton@mt.gov>, Elisabeth DeGrenier <Elisabeth@ywhc.org>, Judy Goldsby <msinmontana@yahoo.com>, Kevin Nelson <archmedtech@gmail.com>, Kevin Nelson2 <kevinn@ctagroup.com>, Nancy Curriden <ncurriden@bresnan.net>, Tracy Livingston <livtleah1@hotmail.com>

Bcc:

Date: Wed, 23 Nov 2016 16:26:04 +0000

Subject: RE: Huntley Irrigation Building - Ballantine NR Review

YHPB:

Great to see this building being recognized – much has been lost out there.

Kevin

<https://www.facebook.com/Billings-City-County-Planning-Division-1738982159659260/>

<https://www.facebook.com/YellowstoneHistoricPreservationBoard/>



From: Ed Saunders [mailto:saundersee@yahoo.com]
Sent: Wednesday, November 23, 2016 6:23 AM
To: Mattox, Lora <MattoxL@ci.billings.mt.us>
Cc: Allen Rapacz <allen@schutzfoss.com>
Subject: Re: Huntley Irrigation Building - Ballantine NR Review

Thank-you, Lora,

Great historical reading about the irrigation project.

A question, I noticed the irrigation building appears to have architectural add-ons to the building: the add-ons may or may not be period extensions of the building. Would these add-ons remain with the building if the building is accepted to the national register, or would the possibility exist that the add-ons have to be removed to preserve the building's historical architecture?

-Ed

On Monday, November 21, 2016 8:39 AM, "Mattox, Lora" <MattoxL@ci.billings.mt.us> wrote:

Good Morning YHPB,

Please find attached a National Register Nomination for the Huntley Irrigation Office Building in Ballantine. Please let me know if you have any comments you would like submitted to SHPO.

Thank you,

Lora Mattox, AICP

Transportation Planner, Planner II

Please find attached a National Register Nomination for the Huntley Irrigation Office Building in Ballantine. Please let me know if you have any comments you would like submitted to SHPO.

Thank you,

Lora Mattox, AICP

Transportation Planner, Planner II

Historic Preservation Officer

Planning & Community Services Department

2825 3rd Avenue North, 4th Floor

Billings, MT 59101

Phone: 406-247-8622

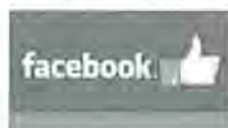
Fax: 406-657-8327



Follow Us on Facebook:

<https://www.facebook.com/Billings-City-County-Planning-Division-1738982159659260/>

<https://www.facebook.com/YellowstoneHistoricPreservationBoard/>



----- Forwarded message -----

From: "Boughton, John" <JBoughton@mt.gov>

To: "Mattox, Lora" <MattoxL@ci.billings.mt.us>, "Ed Saunders" <saundersee@yahoo.com>

Cc: Allen Rapacz <allen@schutzfoss.com>, "Blain Fandrich (bfandrich@ethnoscience.com)"

<bfandrich@ethnoscience.com>, Elisabeth <elisabeth@ywhc.org>, Judy Goldsby <msinmontana@yahoo.com>, Kevin

Kooistra <kevin@ywhc.org>, Kevin Nelson <archmedtech@gmail.com>, Kevin Nelson2 <kevinn@ctagroup.com>,

Nancy Curriden <ncurriden@bresnan.net>, Tracy Livingston <livtleah1@hotmail.com>, "Joan Brownell

(jlbrownell@nemont.net)" <jlbrownell@nemont.net>

Bcc:

Date: Wed, 23 Nov 2016 15:52:45 +0000

Subject: RE: Huntley Irrigation Building - Ballantine NR Review

Hi Lora,

From: Blain Fandrich [mailto:bfandrich@ethnoscience.com]
Sent: Wednesday, November 23, 2016 9:02 AM
To: Mattox, Lora <MattoxL@ci.billings.mt.us>; 'Ed Saunders' <saundersee@yahoo.com>
Cc: Allen Rapacz <allen@schutzfoss.com>; 'Boughton, John' <JBoughton@mt.gov>; Elisabeth DeGrenier <Elisabeth@ywhc.org>; Judy Goldsby <msinmontana@yahoo.com>; Kevin Kooistra <kevin@ywhc.org>; Kevin Nelson <archmedtech@gmail.com>; Kevin Nelson2 <kevinn@ctagroup.com>; Nancy Curriden <ncurriden@bresnan.net>; Tracy Livingston <livtleah1@hotmail.com>
Subject: Re: Huntley Irrigation Building - Ballantine NR Review

Hi All,

Here are my thoughts on Ed's question. It appears the 1980s additions conform with *The Secretary of Interior's Standards for Rehabilitation & Guidelines for Rehabilitating Historic Buildings* (National Park Service 1992:90-93). Although the additions are not very pretty, they are 1) attached to the rear of the building which reduces their conspicuousness, 2) limited in size compared to the historic building, 3) of minimal impact to character-defining features of the building, and 4) they can be differentiated from the original building. The main character-defining elements of the building are on the front and sides, which remain intact. Thus, while I agree that the additions are not ideal for a historic building, they appear to be within acceptable guidelines and would not necessarily need to be removed in order to be listed on the NRHP. Although restoration would be ideal, it may not be practical for a working building.

Regards,

Blain

On 11/23/2016 8:09 AM, Mattox, Lora wrote:

Good question. I will forward your comment to SHPO.

Thanks!

Lora Mattox, AICP
Transportation Planner, Planner II
Historic Preservation Officer
Planning & Community Services Department
2825 3rd Avenue North, 4th Floor
Billings, MT 59101
Phone: 406-247-8622
Fax: 406-657-8327



March 6, 2017

George Herbst
Federal Preservation Officer
Bureau of Reclamation
Denver Federal Center, Building -67
P.O. Box 25007
Denver, Colorado 80225

Subject: Huntley Project Office National Register nomination certification letter

Dear Mr. Herbst:

Thank you very much for the bound copy and CD of the Huntley Project Office National Register nomination form. Please find enclosed the signed State/Federal Agency Certification page (page 1 of the National Register nomination) for the Huntley Project Office National Register nomination form signed by Dr. Mark Baumler, the Montana State Historic Preservation Officer.

Thank you for BOR's efforts in listing this building in the National Register. If you require any additional help or wish to list other properties under your jurisdiction, please contact us!

Sincerely,

John Boughton
National Register Coordinator
Montana State Historic Preservation Office
Montana Historical Society
1301 E. Lockey
Helena, MT 59620

225 North Roberts Street
P.O. Box 201201
Helena, MT 59620-1201
(406) 444-2694
(406) 444-2696 FAX
montanahistoricalsociety.org



United States Department of the Interior

BUREAU OF RECLAMATION
P.O. Box 25007
Denver, CO 80225-0007

APR 14 2017




IN REPLY REFER TO:

84-53000
ENV-3.00

MEMORANDUM

To: J. Paul Loether, Chief, National Register of Historic Places, National Park Service,
1201 Eye Street, NW (2280), Washington, DC 20005
Attn: Mr. Paul Lusignan

From: Roseann Gonzales 
Director, Policy and Administration

Subject: Nomination of the Huntley Project Office, Yellowstone County, Montana, to the
National Register of Historic Places (National Register)

The Bureau of Reclamation is pleased to nominate the Huntley Project Office for listing in the National Register. The nomination form and supporting information is attached, submitted in electronic format on the two enclosed compact discs with the required original signature sheet. As is also required, I confirm that the enclosed disc contains the true and correct copy of the nomination form for the Huntley Project Office.

Since 1918, the Huntley Project Office has functioned as the headquarters from which the Huntley Project is operated and maintained. The building retains much of its historic design, appearance, and feeling, and demonstrates a high degree of overall integrity, including integrity of its interior finishes. The Montana State Review Board for National Register nominations and the State Historic Preservation Officer have reviewed the nomination and both endorse the listing of the Huntley Project Office in the National Register.

If you have any questions, please contact Mr. George Herbst, Federal Preservation Officer, at 303-445-3311, or at g Herbst@usbr.gov, or Ms. Lynne MacDonald, cultural resources specialist, at 303-445-3206, or at lmacdonald@usbr.gov.

Attachments - 3

cc: GP-4200 (GShannon), MT-227 (RDHanson)
(all w/o att)



IN REPLY REFER TO:

MT-227
ENV-3.00

United States Department of the Interior

BUREAU OF RECLAMATION

Great Plains Region
Montana Area Office
P.O. Box 30137

Billings, Montana 59107-0137

JUN 26 2017

Paul R. Lusignan
Historian
National Register of Historic Places
National Park Service
1849 C St., NW - Mail Stop 7228
Washington, DC 20240

Subject: Huntley Project Office National Register of Historic Places Nomination – Additional Photographic Documentation. MTAO Project No. HU-17-004

Dear Mr. Lusignan:

Enclosed please find a CD containing high resolution digital photographs of the Huntley Project Office and a corresponding photograph log to be included as additional documentation to the National Register of Historic Places (NRHP) nomination. Thank you for the cooperation and assistance from you and the NRHP staff in the preparation of this nomination and its successful listing.

If you have any questions concerning this letter, please feel free to contact me at 406-247-7666 or by email at rdhanson@usbr.gov.

Sincerely,

Rick Hanson
Area Archaeologist

Enclosures – 2

cc: George Herbst
Federal Preservation Officer
Bureau of Reclamation
Denver Federal Center, Bldg. 67 25007
Denver, CO 80225
(w/o encl)