

historical photograph

Tush Historic District

Buffalo National River, Arkansas

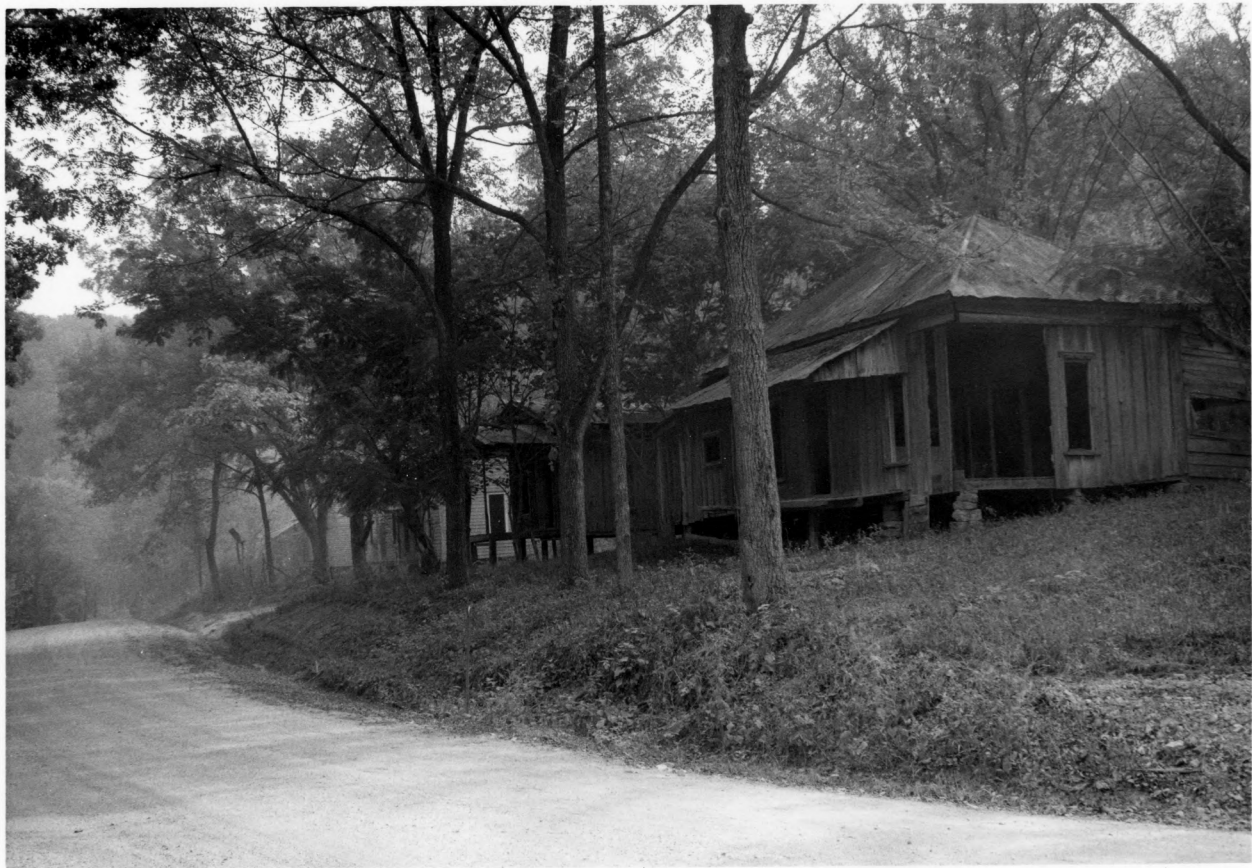
unknown

ca. 1900

unknown (copy neg. from Adams, USGS, 1904)

view of Morning Star Mining Co. property, looking northeast

#s 14, 16, 18, 20, 21, 27, 28, 14, 13, 12



Rusk "ghost town," Rusk Historic District

Buffalo National River, Arkansas

Suzanne D. Rogers

1985

Buffalo National River

houses in Rusk "ghost town," looking southwest

2, 3, 4, 5



Tusk Historic District

Buffalo National River, Arkansas

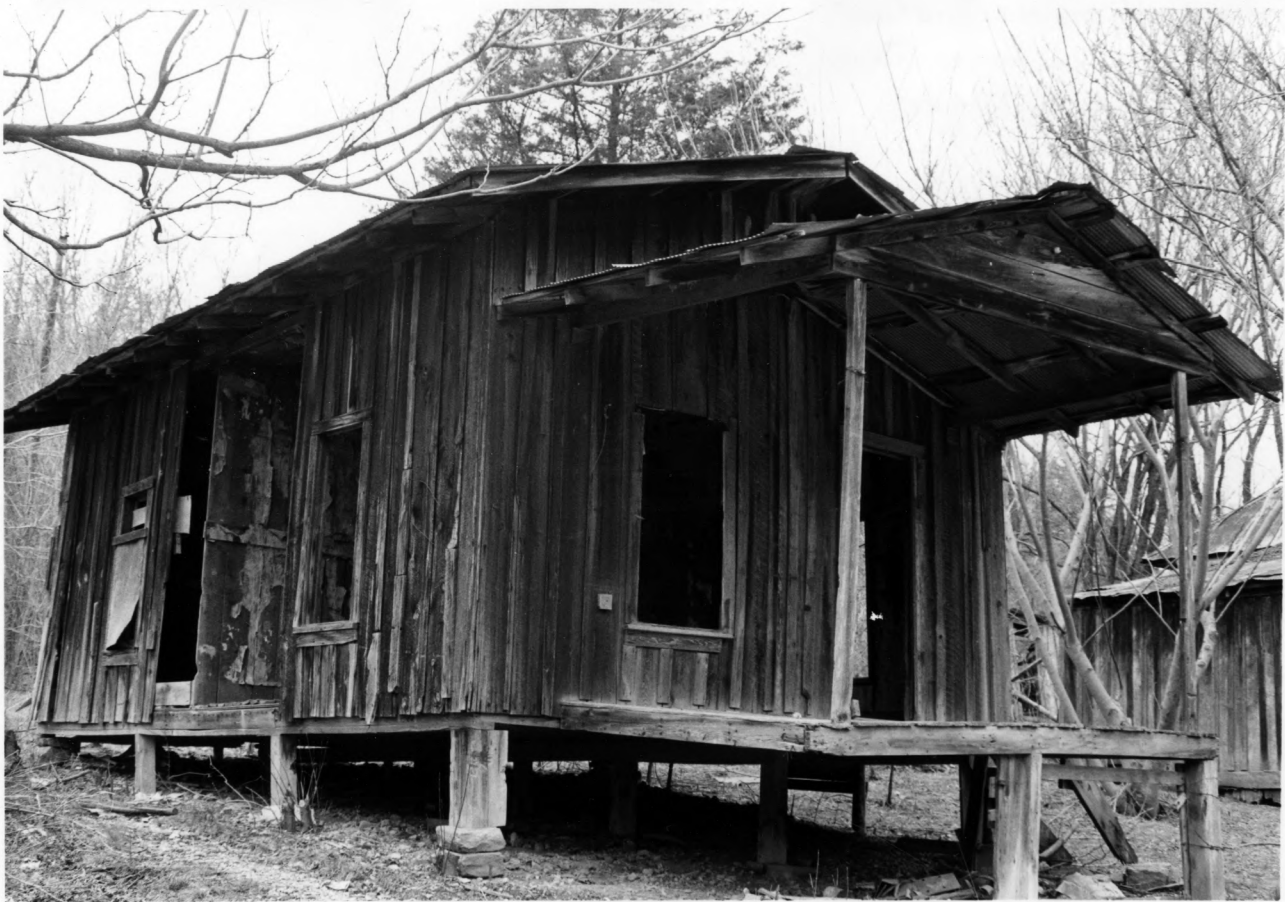
Suzanne D. Rogers

1984

Buffalo National River

Bundy House, Tusk "ghost town", looking west

2



Rush Historic District

Buffalo National River, Arkansas

Suzanne D. Rogers

1984

Buffalo National River

Wash house, Rush "ghost town" looking northwest

3



Kastning house Rush Historic District

Buffalo National River, Arkansas

Suzanne D Rogers

1985
Buffalo National River

view of Kastning house in "ghost town," facing west

4



Tusk Historic District

Buffalo National River, Arkansas

Suzanne D. Rogers

1984

Buffalo National River

Brantley House, Tusk "ghost town," looking southwest

5



Rush Historic District
Buffalo National River, Arkansas

Suzanne D. Rogers

1984

Buffalo National River

Raby House ruins, Rush "ghost town," looking north.

#7



Rusk Historic District

Buffalo National River, Arkansas

Suzanne D. Rogers

1985

Buffalo National River

Storekeepers House, looking northwest

8



historical photograph, Bessie Kastning Collection

Rush Historic District

Buffalo National River, Arkansas

unknown

1955

unknown (copy negs, Suzanne D. Rogers)

Rush community on porch of Taylor-Medley store

#9



Taylor-Medley General Store, Rush Historic District
Buffalo National River, Arkansas

Suzanne Di Rogers

1984

Buffalo National River

view of deterioration of Taylor-Medley store, facing west
9



Rush Historic District

Buffalo National River, Arkansas

Suzanne D. Rogers

1984

Buffalo National River

Morning Star pump house, looking southeast

10



Rush Historic District

Buffalo National River, Arkansas

Suzanne D. Rogers

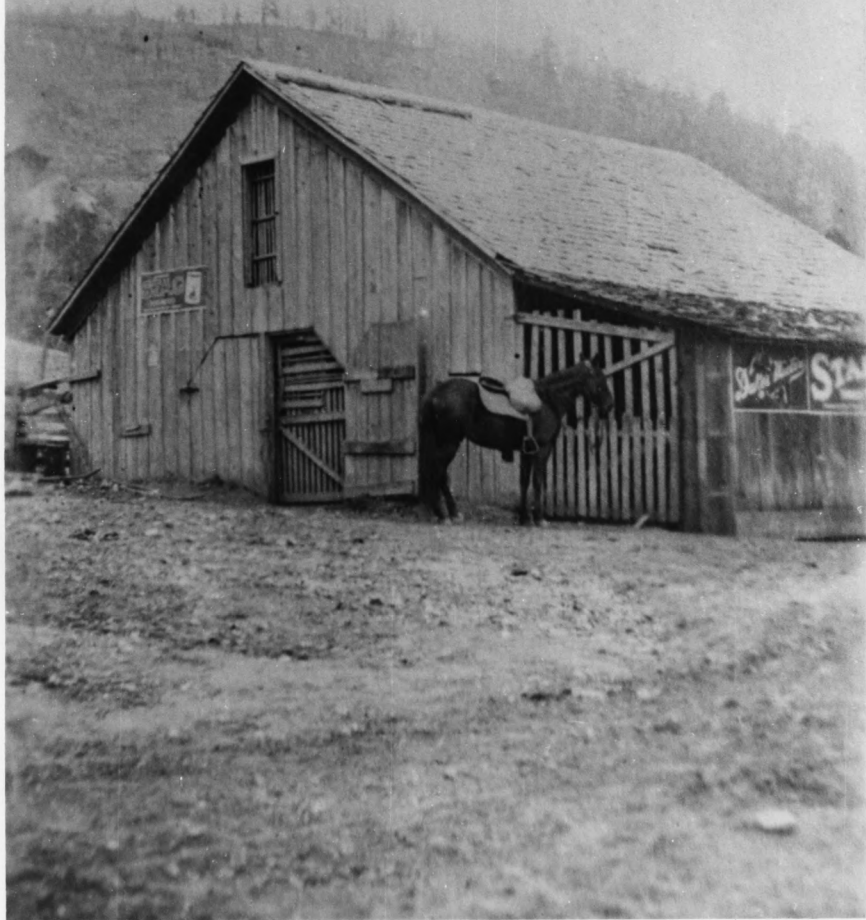
1984

Buffalo National River

footbridge pillar on Rush Creek, looking west

#11

12



Morning Star Barn historical photograph, Bessie Kasting Collection

Rush Historic District

Buffalo National River, Arkansas

Unknown

1926

Unknown (copy neg., Suzanne D. Rogers)

Morning Star hilly Barn

12



Morning Star Livery Barn, Rush Historic District
Buffalo National River, Arkansas

Suzanne D. Rogers

1984

Buffalo National River

barn prior to stabilization, facing east

#12



Morning Star Livery Barn, Tush Historic District
Buffalo National River, Arkansas

Suzanne D. Rogers

1985

Buffalo National River

barn after 1985 stabilization work

12



Smelter, Rush Historic District
Buffalo National River, Arkansas

Suzanne D. Rogers

1984

Buffalo National River

smelter prior to stabilization, facing northeast

13



Smelter, Tusk Historic District
Buffalo National River, Arkansas

Suzanne D. Rogers

1985

Buffalo National River

Smelter after 1985 stabilization work, facing northeast

13



Rush Historic District
Buffalo National River, Arkansas
Suzanne D. Rogers

1985

Buffalo National River
area of Morning Star Hotel, facing northeast
14



historical photograph, Bessie Kasting Collection

Rusk Historic District

Buffalo National River, Arkansas

unknown

1925

unknown (copy negative, Suzanne Rogers)

Medley blacksmith shop

#17



Blacksmith shop + warehouse, Rush Historic District

Buffalo National River, Arkansas

Suzanne D. Rogers

1984

Buffalo National River

Morning Star blacksmith shop and warehouse, facing north

#17



historical photograph, Bessie Kastning Collection

Rush Historic District

Buffalo National River, Arkansas

unknown

1915

unknown (copy neg., Suzanne D. Rogers)

Chase + Mullolland store and Morning Star Mine office, facing north

#18



Rusk Historic District

Buffalo National River, Arkansas

Suzanne D. Rogers

1984

Buffalo National River

foundation, Morning Star Mine office, looking northwest

18



Rush Historic District
Buffalo National River, Arkansas
Suzanne D. Rogers

1984

Buffalo National River

foundation of Chase + Mulholland Store, looking northwest

#18



Rush Historic District

Buffalo National River, Arkansas

Suzanne D. Rogers

1984

Buffalo National River

Smith house ruins, looking east

19



Rush Historic District

Buffalo National River, Arkansas

Suzanne D. Rogers

1984

Buffalo National River

portion of 200' retaining wall for Morning Star mill facilities (facing southwest)

#20



~~Rush Historic District~~ ~~East Helena District~~

Buffalo National River, Arkansas

Suzanne D. Rogers

1985

Buffalo National River

Morning Star tramway piers, looking southwest

21



Tusk Historic District

Buffalo National River, Arkansas

Suzanne D. Rogers

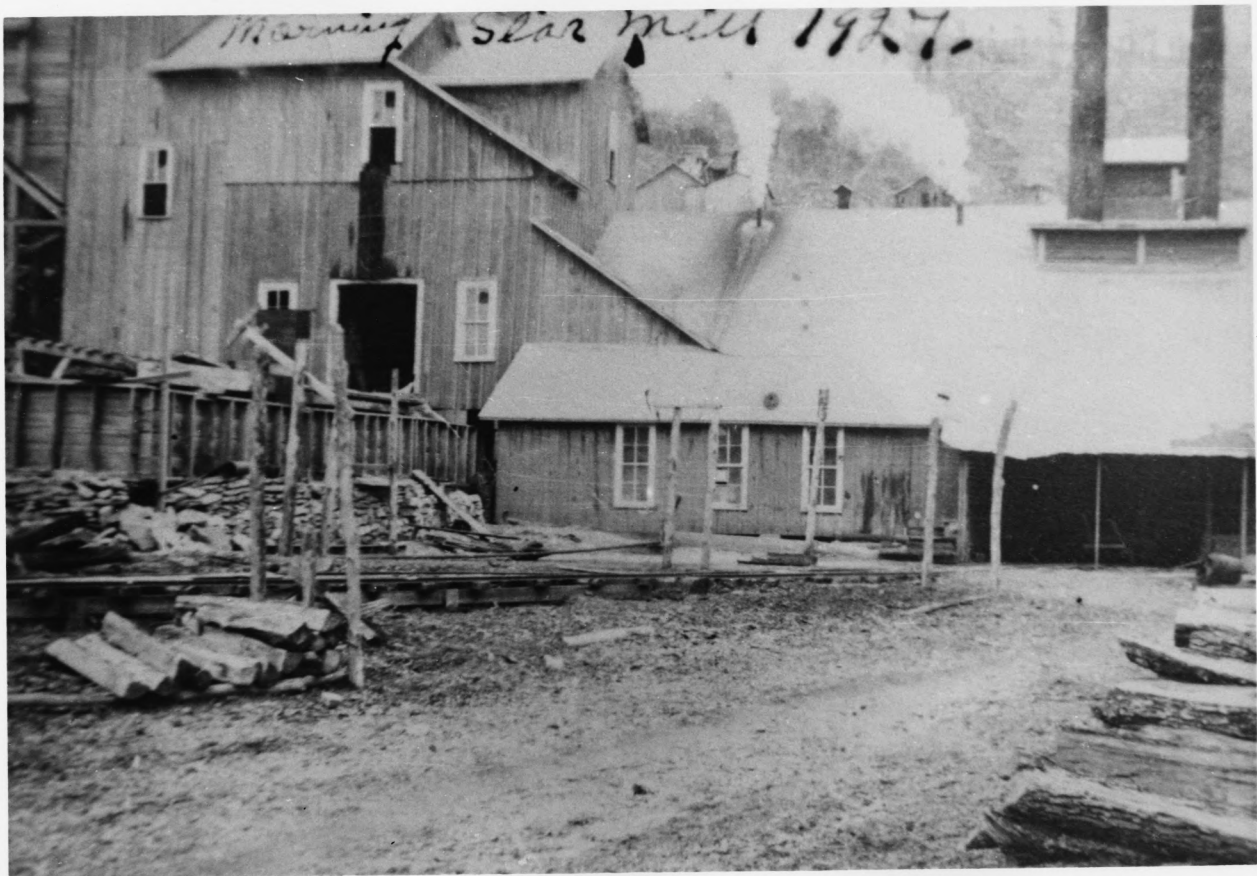
1985

Buffalo National River

Morning Star mill rockhouse ruins, facing north

22

Morning Star mill 1927.



Morning Star mill historical photograph, Bessie Kastring Collection
Rush Historic District

Buffalo National River, Arkansas

Unknown

1927

Unknown (copy neg., Suzanne D. Rogers)

Morning Star Mill during last period of operation (facing northeast)

23



Morning Star mill ruins, Rush Historic District

Buffalo National River

Suzanne D. Rogers

1984

Buffalo National River

concrete piers of jig area, facing southwest

23



Rusk Historic District

Buffalo National River, Arkansas

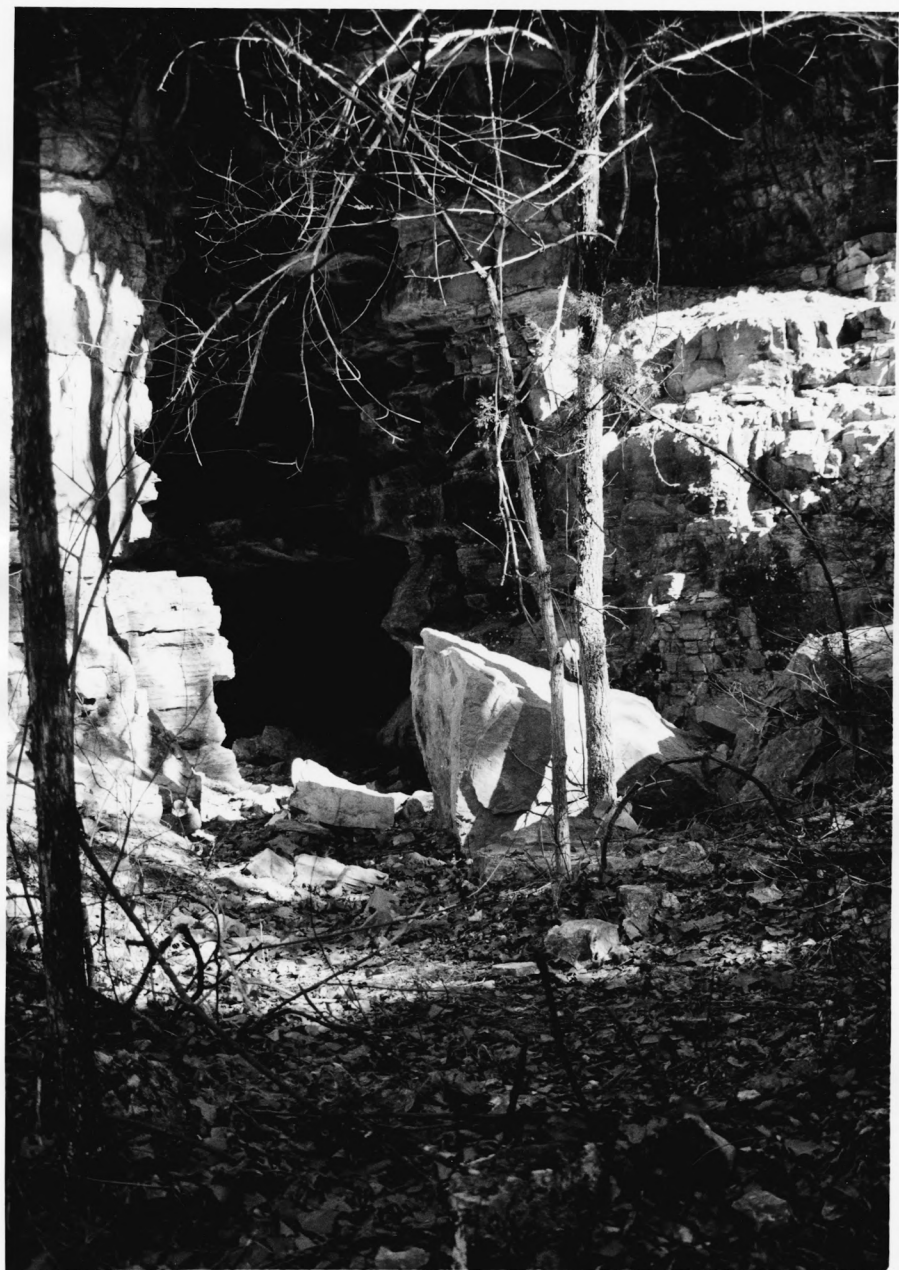
Suzanne D. Rogers

1984

Buffalo National River

Morning Star oil storage building ruins, looking north

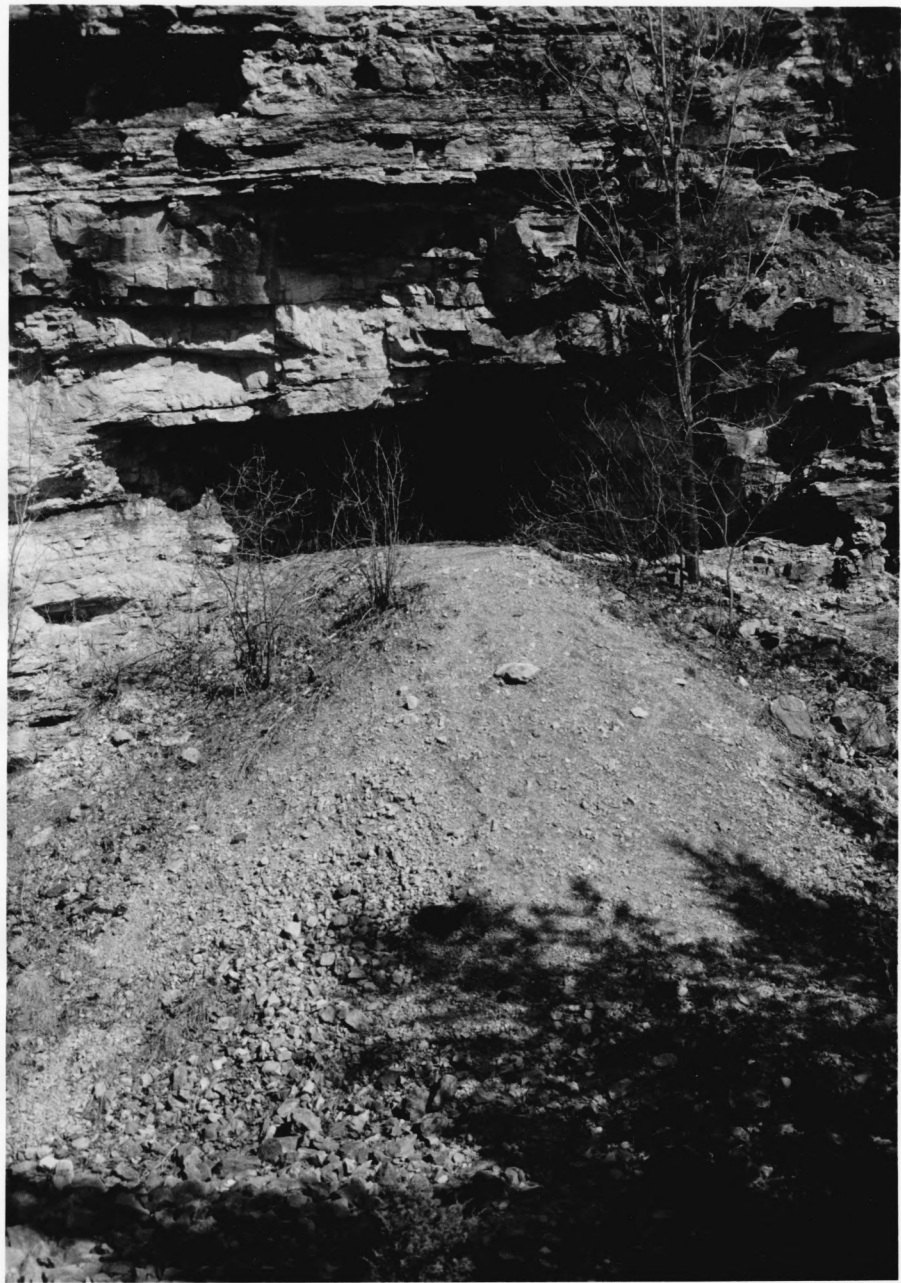
27



Tush Historic District
Buffalo National River, Arkansas
Suzanne Dr Rogers

1985

Buffalo National River
entrance to Morning Star mining tunnel, looking northeast
#28



Rush Historic District

Buffalo National River, Arkansas

Suzanne D. Rogers

1985

Buffalo National River

Morning Star Mine tunnel, looking northeast

#28



Tusk Historic District

Buffalo National River, Arkansas

Suzanne D. Rogers

1985

Buffalo National River

entrance to Ben Carney mine, looking northeast

31



Rusk Historic District

Buffalo National River

Suzanne D. Rogers

1984

Buffalo National River

Hicks Hotel site, looking north

41



Tusk Historic District

Buffalo National River, Arkansas

Suzanne D. Rogers

1985

Buffalo National River

Hicks stone wall and gate, looking north

41



Hicks General Store, Tuska Historic District

Buffalo National River, Arkansas

Suzanne D. Rodgers

1984

Buffalo National River

remodeled Hicks store, facing northwest

#42



Rusk Historic District

Buffalo National River, Arkansas

1985

Suzanne D. Rogers

Buffalo National River

"Pop Campbell" house site, looking west

45



Rush Historic District
Buffalo National River, Arkansas

Suzanne D. Rogers

1985

Buffalo National River

portion of McIntosh mill ruins, looking southeast

46



Rusk Historic District

Buffalo National River, Arkansas

Suzanne D. Rogers

1985

Buffalo National River

shaft and anchor block near McIntosh mill, facing west

49



Rush Historic District
Buffalo National River
Suzanne D. Rogers

1985

Buffalo National River

view of McIntosh mining level, looking east

51



Rush Historic District
Buffalo National River, Arkansas

Suzanne D. Rogers

1985

Buffalo National River

road bed trace to Melutosh mill, facing northwest

51



McIntosh Hotel historical photograph, Bessie Kastning Collection

Rush Historic District

Buffalo National River, Arkansas

unknown

1922 (ca.)

unknown (copy neg. Suzanne D. Rogers)

Hotel of the McIntosh mining company (facing northeast)

#52



Rusk Historic District

Buffalo National River, Arkansas

Suzanne D. Rogers

1985

Buffalo National River

corner of McIntosh Hotel, facing north

52



Rush Historic District

Buffalo National River, Arkansas

Suzanne D. Rogers

1984

Buffalo National River

Rush "Hilton" ruins, looking northeast

56



Rusk Historic District
Buffalo National River, Arkansas

Suzanne D. Rogers

1985

Buffalo National River

White Eagle mill ruins, looking west

57



Rush Historic District

Buffalo National River, Arkansas

Suzanne D. Rogers

1984

Buffalo National River

"New Town" building, looking north

#60



Tusk Historic District

Buffalo National River, Arkansas

Suzanne D. Rogers

1985

Buffalo National River

Edith shaft, looking southwest

64



Rusk Historic District
Buffalo National River, Arkansas
Suzanne D. Rogers

1984

Buffalo National River
Yellow Rose mill ruins, looking south
#65



Rusk Historic District

Buffalo National River, Arkansas

Suzanne D. Rogers

1985

Buffalo National River

Edith mill ruins, looking east

65



Rush Historic District
Buffalo National River, Arkansas

Suzanne D. Rogers

1985

Buffalo National River

Yellow Rose (?) ruins, looking northeast

67



Red Cloud mine, Rush Historic District

Buffalo National River, Arkansas

Suzanne D. Rogers

1985

Buffalo National River

entrance to tunnels, eastern mine section, facing southeast

68



Red Cloud Mine area, Rush Historic District

Buffalo National River, Arkansas

Suzanne D. Rogers

1984

Buffalo National River

view of Red Cloud mine workings from Buffalo River, facing east
(similar vista to Red Cloud historical photograph) included with these photographs)

68/69



15

Red Cloud Mill historical photograph, Bessie Kastning Collection

Rush Historic District

Buffalo National River, Arkansas

unknown

1915

unknown (copy reqd. Suzanne D. Rogers)

view of Red Cloud mine and mill from Buffalo River, facing east

#69



Rusk Historic District

Buffalo National River, Arkansas

Suzanne D. Rogers

1985

Buffalo National River

Red Cloud mill piers, looking northwest

69



Rush Historic District

Buffalo National River, Arkansas

Suzanne D. Rogers

1985

Buffalo National River

waste rock at Lonnie Boy mine, looking southeast

70



Park Historic District
Buffalo National River, Arkansas

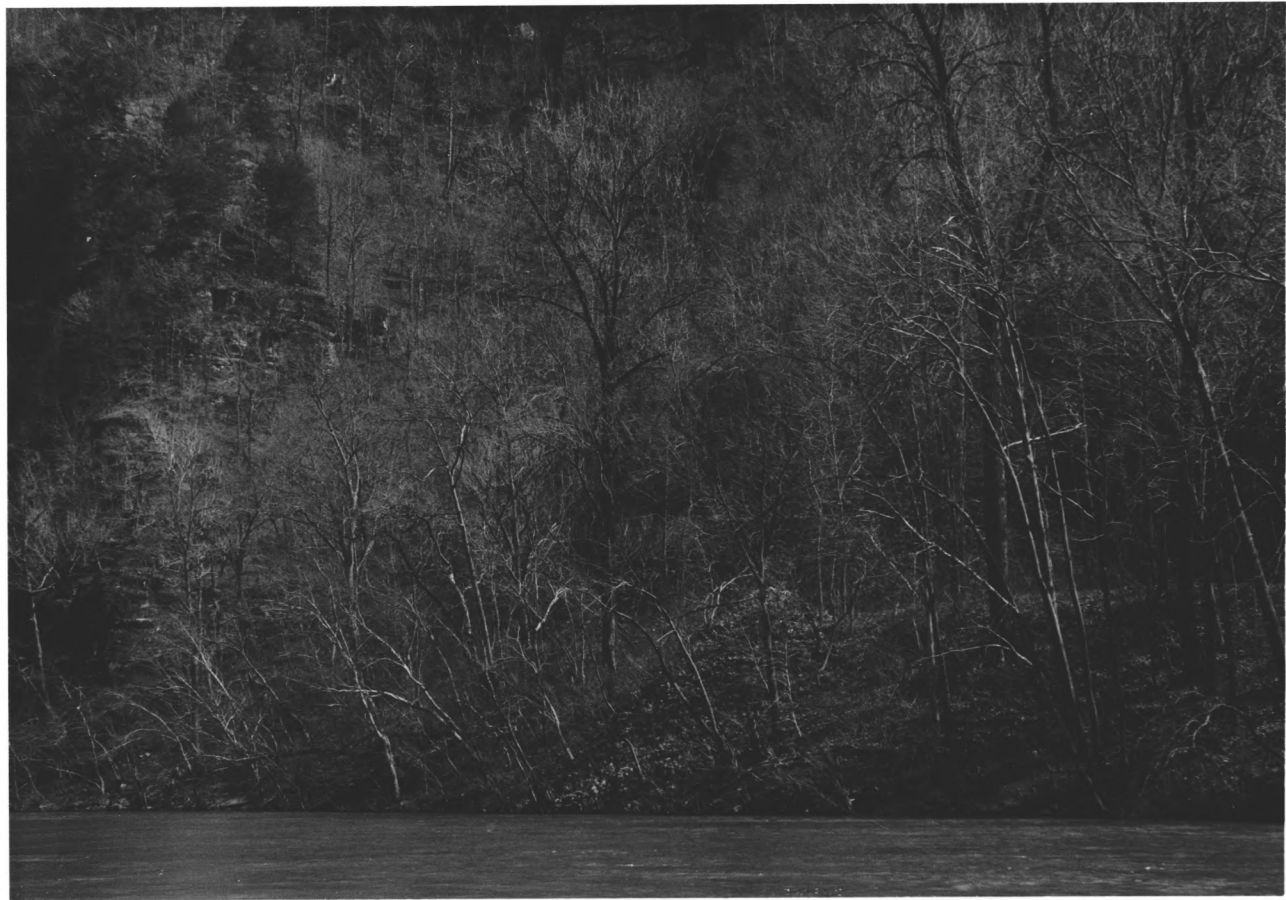
Suzanne D. Rogers

1984

Buffalo National River

Lonnie Boy mine pump house foundation, looking southeast

71



Rusk Historic District

Buffalo National River, Arkansas

Suzanne D. Rogers

1984

Buffalo National River

Silver Hollow mine area and waste rock, looking southeast

75



Rush Historic District

Buffalo National River, Arkansas

Suzanne D. Rogers

1984

Buffalo National River

lower level, Monte Cristo mine, looking northwest

79



Tusk Historic District

Buffalo National River, Arkansas

Suzanne D. Rogers

1984

Buffalo National River

machinery at Monte Cristo mine, looking west

79



Rusk Historic District

Buffalo National River, Arkansas

Suzanne D. Rogers

1984

Buffalo National River

concrete blocks at Clabber mine area, looking west
82



Rush Access, Tush Historic District
Buffalo National River, Arkansas
Suzanne D. Rogers

1985

Buffalo National River

Rush landing and access at mouth of Tush Creek on Buffalo River,
facing northwest; area slated for expansion

85



Tush Access, Tush Historic District

Buffalo National River, Arkansas

Suzanne D. Rogers

1985

Buffalo National River

recreational facilities at Tush landing, facing east

#85



Buffalo River, Rush Historic District

Buffalo National River, Arkansas

Suzanne D. Rogers

1985

Buffalo National River

looking downstream (northeast) to Clabby Creek

* 85



Rush Historic District
Buffalo National River, Arkansas

Suzanne D. Rogers

1984

Buffalo National River

Rush Creek Mining Co. mill (the "new White Eagle"), looking west

#86



Rusk Historic District

Buffalo National River, Arkansas

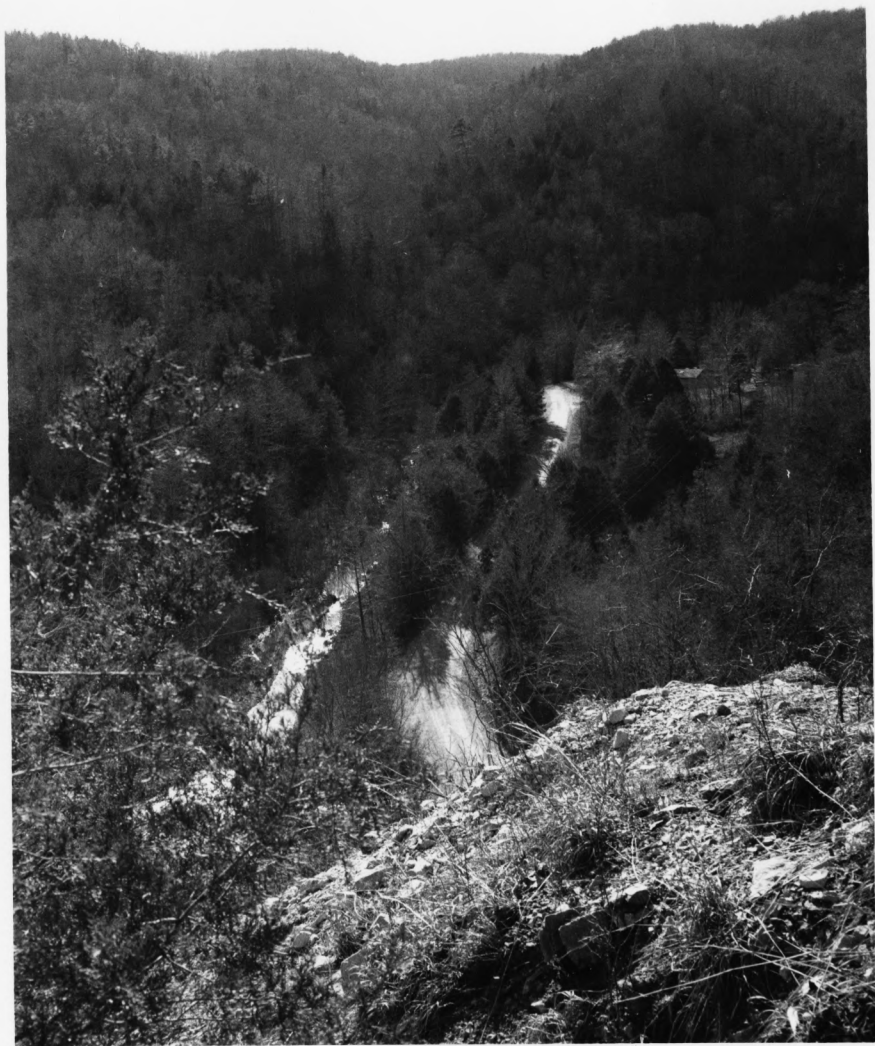
Suzanne D. Rogers

1984

Buffalo National River

Bowman use and occupancy, looking west

93



Rush Valley, Rush Historic District
Buffalo National River, Arkansas

Suzanne D. Rogers

1984

Buffalo National River

Looking up Rush Creek from the McIntosh mine (northwest) with Hicks store
in distance

view from #51 to #42, #35



Rush primitive campground, Rush Historic District

Buffalo National River, Arkansas

Suzanne D. Rogers

1985

Buffalo National River

looking south west - side of New Town; also area scheduled for
expansion of recreational facilities

#60 and #88