



George and Annie Bell House .

Lawrence, Kansas

Photo Credit: Nora Pat Small, April, 1983

Neg. on File: Historic Preservation Dept.

Kansas State Historical Society

View from southwest of front facade

1 of 8



George and Annie Bell House

Lawrence, Kansas

Photo Credit: Nora Pat Small, April, 1983

Neg. on File: Historic Preservation Dept.

Kansas State Historical Society

View from northwest. 1960's addition just
visible to far left.

2 of 8



George and Annie Bell House

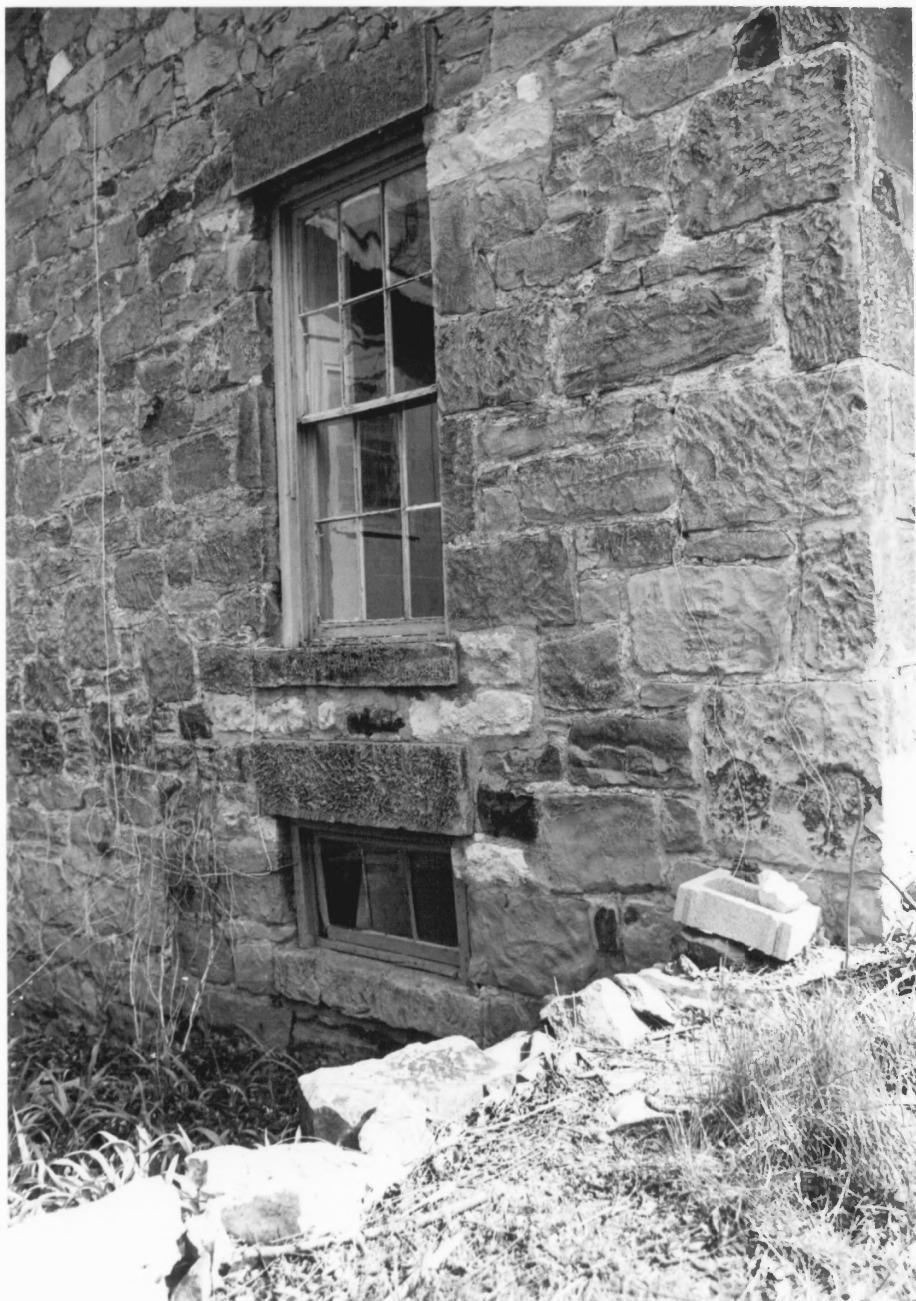
Lawrence, Kansas

Photo Credit: Nora Pat Small, April, 1983

Neg. on File: Historic Preservation Dept.

Kansas State Historical Society

View from southeast showing rear facade and
redwood deck.



George and Annie Bell House

Lawrence, Kansas

Photo Credit: Nora Pat Small, April, 1983

Neg. on File: Historic Preservation Dept.

Kansas State Historical Society

Detail of windows in west end of north
facade.

4 of 8



George and Annie Bell House

Lawrence, Kansas

Photo Credit: Nora Pat Small, April, 1983

Neg. on File: Historic Preservation Dept.

Kansas State Historical Society

Detail of rear facade (east)

5 of 8



George and Annie Bell House

Lawrence, Kansas

Photo Credit: Nora Pat Small, April, 1983

Neg. on File: Historic Preservation Dept.

Kansas State Historical Society

Detail of hardware on front door

6 of 8



George and Annie Bell House

Lawrence, Kansas

Photo Credit: Nora Pat Small, April, 1983

Neg. on File: Historic Preservation Dept.

Kansas State Historical Society

Stairs from first floor to second floor

7 of 8



George and Annie Bell House

Lawrence, Kansas

Photo Credit: Nora Pat Small, April, 1983

Neg. on File: Historic Preservation Dept.

Kansas State Historical Society

Window in front room, first floor.

8 of 8