

United States Department of the Interior  
National Park Service



NATIONAL REGISTER OF HISTORIC PLACES  
REGISTRATION FORM

=====

**1. Name of Property**

=====

historic name: Lonoke Downtown Historic District

other name/site number: N/A

=====

**2. Location**

=====

street & number: Intersection of Front and Center Streets

not for publication: N/A

city/town: Lonoke

vicinity: N/A

state: AR county: Lonoke code: AR 085 zip code: 72086

=====

**3. Classification**

=====

Ownership of Property: Private

Category of Property: District

Number of Resources within Property:

Contributing	Noncontributing	
<u>19</u>	<u>11</u>	buildings
<u>      </u>	<u>      </u>	sites
<u>      </u>	<u>      </u>	structures
<u>      </u>	<u>      </u>	objects
<u>19</u>	<u>11</u>	Total

Number of contributing resources previously listed in the National Register: 4

Name of related multiple property listing: N/A

=====

#### 4. State/Federal Agency Certification

=====

As the designated authority under the National Historic Preservation Act of 1986, as amended, I hereby certify that this X nomination \_\_\_\_\_ request for determination of eligibility meets the documentation standards for registering properties in the National Register of Historic Places and meets the procedural and professional requirements set forth in 36 CFR Part 60. In my opinion, the property X meets \_\_\_\_\_ does not meet the National Register Criteria. \_\_\_\_\_ See continuation sheet.

Cathy A. Slatu  
\_\_\_\_\_  
Signature of certifying official

3-28-96  
\_\_\_\_\_  
Date

\_\_\_\_\_  
Arkansas Historic Preservation Program  
State or Federal agency and bureau

In my opinion, the property X meets \_\_\_\_\_ does not meet the National Register criteria. \_\_\_\_\_ See continuation sheet.

\_\_\_\_\_  
Signature of commenting or other official

\_\_\_\_\_  
Date

\_\_\_\_\_  
State or Federal agency and bureau

=====

#### 5. National Park Service Certification

=====

I, hereby certify that this property is:

X entered in the National Register \_\_\_\_\_  
\_\_\_\_\_ See continuation sheet.  
\_\_\_\_\_ determined eligible for the  
National Register \_\_\_\_\_  
\_\_\_\_\_ See continuation sheet.  
\_\_\_\_\_ determined not eligible for the  
National Register \_\_\_\_\_  
\_\_\_\_\_ removed from the National Register \_\_\_\_\_  
\_\_\_\_\_ other (explain): \_\_\_\_\_

D. R. Fyfe 5/10/96  
\_\_\_\_\_  
\_\_\_\_\_

A Signature of Keeper \_\_\_\_\_ Date  
of Action

=====

#### 6. Function or Use

=====

Historic: COMMERCE/TRADE  
COMMERCE/TRADE  
\_\_\_\_\_

Sub: Business  
Specialty Store  
\_\_\_\_\_

Current: COMMERCE/TRADE  
COMMERCE/TRADE  
\_\_\_\_\_

Sub: Business  
Specialty Store  
\_\_\_\_\_

=====

## 7. Description

=====

Architectural Classification:

Other \_\_\_\_\_

Classical Revival \_\_\_\_\_

English Revival \_\_\_\_\_

Italianate \_\_\_\_\_

Mediterranean \_\_\_\_\_

Other Description: Early 20th Century Traditional Commercial

Materials:	foundation	<u>BRICK</u>	roof	<u>ASPHALT</u>
	walls	<u>BRICK</u>	other	_____

Describe present and historic physical appearance. \_\_\_\_\_ See continuation sheet.

---

## Summary

Concentrated around the intersection of Front Street (State Hwy. 70) and Center Street in the historic center of Lonoke, Arkansas, the Lonoke Downtown Historic District is composed of a total of thirty-four commercial buildings. The twenty-three contributing buildings are primarily of brick masonry construction and largely feature the simple, panel brick parapets common to early twentieth century commercial construction around the state.

## Elaboration

Located in the roughly four-block area surrounding the intersection of Center and Front Streets, the Lonoke Downtown Historic District is composed of a total of thirty-four commercial buildings. The twenty-three contributing buildings are primarily of brick masonry construction and largely feature the simple, panel brick parapets common to early twentieth century commercial construction around the state. Party-wall storefront buildings predominate, though there are a small number of free-standing buildings. Included are four buildings already individually-listed on the National Register: the Joe P. Eagle and D. R. Boone Building (NR-listed 12/09/94 and counted as two separate buildings), the Lonoke County Courthouse (NR-listed 06/08/82) and the Rock Island Depot (NR-listed 10/04/84).

The majority of the twenty-three contributing buildings within the district are relatively simple, single-story, brick masonry storefront buildings, the raised parapets of which range from the blank (0076) to the panel brick (0083) to the pattern brick (0069). Most of the first storys have been changed, in some cases substantially, but all the contributing buildings substantially retain their upper storys intact.

A few of these buildings are architecturally elaborate. Of particular note are 109 W. Front Street (0072), the McCrary Building (0073), 104 E. Front Street (0086) and the Wheat Building (0093). Their facades include such details as dentil courses, elaborate hood molds and cornice detailing, and bracketed projecting cornices. One building, 203 E. Front Street (0078), is a free-standing building -- originally designed as a business -- that

displays English Revival influences. The other free-standing building within the district is the rock-faced Sallie Wright Building (0092) at 123 N. Center.

The eleven non-contributing buildings consist largely of historic commercial storefront buildings that have been insensitively-altered over time and for that reason can no longer be considered contributing.

=====

### 8. Statement of Significance

=====

Certifying official has considered the significance of this property in relation to other properties: Local.

Applicable National Register Criteria: C

Criteria Considerations (Exceptions): N/A

Areas of Significance: ARCHITECTURE  
\_\_\_\_\_  
\_\_\_\_\_  
\_\_\_\_\_  
\_\_\_\_\_

Period(s) of Significance: 1900-1945

Significant Dates: 1900-1945

Significant Person(s): N/A  
\_\_\_\_\_

Cultural Affiliation: N/A

Architect/Builder: Unknown  
\_\_\_\_\_  
\_\_\_\_\_

State significance of property, and justify criteria, criteria considerations, and areas and periods of significance noted above.  
\_\_\_\_ See continuation sheet.

---

### Summary

Criterion C, local significance

The twenty-three contributing buildings that compose the core of the Lonoke Downtown Historic District date from between 1900 and 1945 and largely reflect the influence of the simple, panel-brick commercial style that was popular for such construction throughout the state during the early twentieth century, and particularly in railroad communities; however, such nationally-popular styles as the Italianate, the Classical Revival, the Mediterranean and the English Revival are reflected in certain designs included within the district's boundaries. The historic fabric in downtown Lonoke retains a sufficiently high degree of quality and integrity to be considered one of the best extant ensembles of historic commercial buildings in central Arkansas, and certainly the best in Lonoke County. As such it is locally eligible under Criterion C.



## Elaboration

The community of Lonoke traces its origins to the arrival of the first "leg" of the Memphis and Little Rock Railroad, which was completed between Little Rock and DeValls Bluff on January 26, 1862. Reputedly named by railroad engineers for a single large oak tree that stood in the yard of Major and Mrs. L. W. Monroe, the town was largely settled by merchants who relocated to this site from the nearby community of Brownsville after the railroad laid its tracks three miles to the south of the old military road between Little Rock and Memphis. The city's first depot was constructed in 1867, and the town was platted in that same year. The city of Lonoke was incorporated in 1872 with a population of approximately 1,200.

The Memphis and Little Rock Railroad was the sole railroad serving this small county seat until the last years of the nineteenth century, when the White River and Western Railroad extended its tracks from the rich timber country to the northwest of Lonoke down to the city proper. A depot was constructed adjacent to the courthouse, and the competition with the Memphis and Little Rock Railroad -- which soon became known as the Rock Island Railroad -- was good for the residents and farmers living in and around Lonoke. However, as the intensity of the competition increased, particularly with respect to shipping locally-grown cotton, the smaller, fledgling White River and Western Railroad was gradually forced out of business, and the city's dream of becoming a major regional railroad hub died with it.

The city's fortunes -- and those of the county at large -- were largely tied to those of the cotton market until the first years of the twentieth century, when rice was first successfully introduced into the area as a cash crop. A Mr. W. H. Fuller became known as the father of the rice industry in Arkansas, as he was the first to experiment with growing a rice crop in Lonoke County. Though his first efforts failed, Fuller returned to Lonoke after being successful at growing rice in Louisiana and gradually built interest in rice farming as a potentially-profitable venture. Rice and cotton farming remained the staples of the city and county economy until World War II.

Not surprisingly, the intersection of the principal overland thoroughfares with the railroad formed the locus of Lonoke's commercial district. Mercantile businesses of various sorts predominated, but other such enterprises as banks, insurance brokers, livery stables and land sales (real estate) also conducted a thriving business. As they prospered, these businesses constructed commercial storefront buildings that clearly announced their particular services, proclaimed their success, and encouraged potential customers to inquire within.

The fabric of the Lonoke Downtown Historic District reflects the influence of a variety of historic architectural styles that were popular during this period of significance. The Italianate, Classical Revival, Mediterranean and English Revival are all represented, as is the more restrained plain commercial vernacular that predominates in historic railroad centers throughout the state. The ensemble here included remains one of the finest extant examples of an historic early twentieth century commercial district in central Arkansas; as such it is eligible under Criterion C.

## 9. Major Bibliographical References

*Centennial - City of Lonoke, County of Lonoke*, James B. Abraham, ed., (Lonoke, Arkansas: 1973).

\_\_\_ See continuation sheet.

Previous documentation on file (NPS):

- preliminary determination of individual listing (36 CFR 67) has been requested.
- previously listed in the National Register
- previously determined eligible by the National Register
- designated a National Historic Landmark
- recorded by Historic American Buildings Survey # \_\_\_\_\_
- recorded by Historic American Engineering Record # \_\_\_\_\_

Primary Location of Additional Data:

- X State historic preservation office
- Other state agency
- Federal agency
- Local government
- University
- Other -- Specify Repository: \_\_\_\_\_

=====

**10. Geographical Data**

=====

Acreage of Property: Approximately 21.5

UTM References:	Zone	Easting	Northing	Zone	Easting	Northing		
	A	<u>15</u>	<u>600550</u>		B	<u>15</u>	<u>600760</u>	<u>3849750</u>
	C	<u>15</u>	<u>600760</u>		D	<u>15</u>	<u>600960</u>	<u>3849420</u>
	E	<u>15</u>	<u>600960</u>		F	<u>15</u>	<u>600560</u>	<u>3849350</u>

\_\_\_ See continuation sheet.

Verbal Boundary Description: \_\_\_ See continuation sheet.

Boundaries are indicated on accompanying sketch map.

Boundary Justification: \_\_\_ See continuation sheet.

This boundary includes all the property historically associated with this resource that retains its physical integrity.

=====

**11. Form Prepared By**

=====

Name/Title: Ken Story, National Register/Survey Coordinator

Organization: Arkansas Historic Preservation Program Date: 03/25/96

Street & Number: 323 Center Street, Suite 1500 Telephone: (501) 324-9880

City or Town: Little Rock State: AR Zip: 72201

UNITED STATES DEPARTMENT OF THE INTERIOR  
NATIONAL PARK SERVICE

NATIONAL REGISTER OF HISTORIC PLACES  
EVALUATION/RETURN SHEET

REQUESTED ACTION: NOMINATION

PROPERTY NAME: Lonoke Downtown Historic District

MULTIPLE  
NAME:

STATE & COUNTY: ARKANSAS, Lonoke

DATE RECEIVED: 4/12/96 DATE OF PENDING LIST: 4/23/96  
DATE OF 16TH DAY: 5/09/96 DATE OF 45TH DAY: 5/27/96  
DATE OF WEEKLY LIST:

REFERENCE NUMBER: 96000528

NOMINATOR: STATE

REASONS FOR REVIEW:

APPEAL: N DATA PROBLEM: N LANDSCAPE: N LESS THAN 50 YEARS: N  
OTHER: Y PDIL: N PERIOD: N PROGRAM UNAPPROVED: N  
REQUEST: N SAMPLE: N SLR DRAFT: Y NATIONAL: N

COMMENT WAIVER: N

\_\_\_ ACCEPT \_\_\_ RETURN \_\_\_ REJECT \_\_\_ DATE

ABSTRACT/SUMMARY COMMENTS:

The Lonoke Downtown Historic District is significant under National Register Criterion C (Architecture) as a cohesive collection of early twentieth century commercial architecture representing the typical vernacular building forms found in small railroad communities in central Arkansas.

RECOM./CRITERIA Accept C

REVIEWER Paul R. Lusignan

DISCIPLINE HISTORIAN

TELEPHONE 343 1628

DATE 5/9/96

DOCUMENTATION see attached comments Y/N see attached SLR Y/N





LONGKE DOWNTOWN H. D.

LONGKE, LONGKE Co, AR

PHOTO BY H. BARRY

7/95

NEG. ON FILE AT AHPP

VIEW OF # 66 FROM NORTH





LONGKE DOWNTOWN H. D.

LONGKE, LONGKE Co., AR

PHOTO BY H. BARRY

7/95

NEG. ON FILE AT AHPP

VIEW OF # 67 FROM NORTH

**HILL AUTO SUPPLY**  
Headquarters For AC-Delco Parts





LONGKE DOWNTOWN H. D.

LONGKE, LONGKE Co., AR

PHOTO BY H. BARRY

7/95

NEG. ON FILE AT AHPP

VIEW OF # 68 FROM NORTH





LONGKE DOWNTOWN H. D.

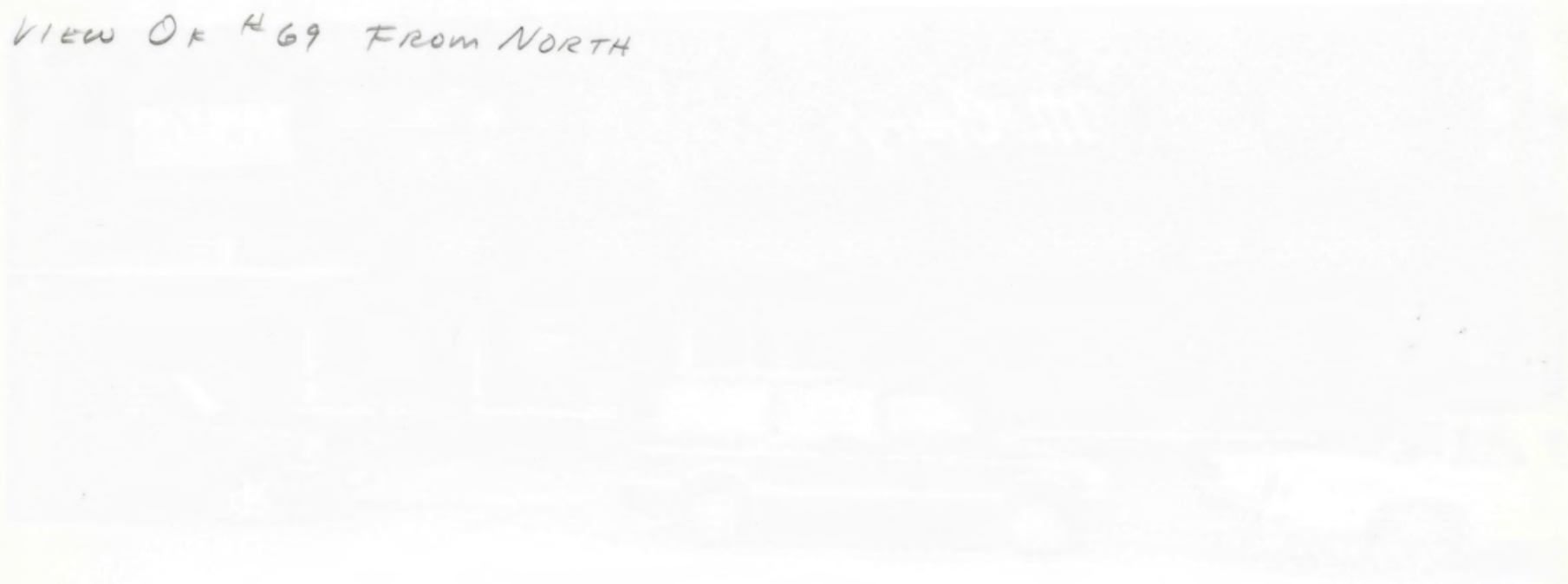
LONGKE, LONGKE CO., AR

PHOTO BY H. BARRY

7/95

NEG. ON FILE AT AHPP

VIEW OF H 69 FROM NORTH





LONGKE DOWNTOWN H. D.  
LONGKE, LONGKE Co, AR  
PHOTO BY H. BARRY

7/95

NEG. ON FILE AT AHCP

VIEW OF # 70 FROM NORTH





LONGKE DOWNTOWN H. D.  
LONGKE, LONGKE Co, AR  
PHOTO BY H. BARRY  
7/95

NEG. ON FILE AT AHPP  
VIEW OF #72 FROM NORTH





LONGKE DOWNTOWN H. D.

LONGKE, LONGKE P., AR

PHOTO BY H. BARRY

7/95

NEG. ON FILE AT AHPP

STREETSCAPE SHOWING #S 73 + 72

FROM ~~NE~~ NE





LONGKE DOWNTOWN H. D.

LONGKE, LONGKE CO., AR

PHOTO BY H. BARRY

7/95

NEG. ON FILE AT ANPP

VIEW OF #73 FROM NORTH





LONOKE DOWNTOWN H. D.

LONOKE, LONOKE CO., AR

PHOTO BY H. BARRY

7/95

NEG. ON FILE AT AHPP

VIEW OF # 74 FROM NW



LONOKE DOWNTOWN H. D.

LONOKE, LONOKE Co., AR

PHOTO BY H. BARRY

7/95

NEG. ON FILE AT AHPP

VIEW OF # 75 FROM NORTH





LONGKE DOWNTOWN H. D.

LONGKE, LONGKE CO., AR

PHOTO BY H. BARRY

7/95

NEG. ON FILE AT AHPP

VIEW OF # 76 FROM NORTH



LONOKE DOWNTOWN H. D.

LONOKE, LONOKE Co., AR

PHOTO BY H. BARRY

7/95

NEG. ON FILE AT AHPP

VIEW OF # 77 FROM NORTH







LONGKE DOWNTOWN H. D.

LONGKE, LONGKE Co, AR

PHOTO BY H. BARRY

7/95

NEG. ON FILE AT AHPP

VIEW OK #78 FROM SE



LONGOKE DOWNTOWN H. D.

LONGOKE, LONGOKE B, AR

PHOTO BY H. BERRY

7/95

NEG. ON FILE AT AHPP

VIEW OR # 78 FROM SW





Lonoke Downtown H. D.

Lonoke, Lonoke Co., AR

Photo by H. Barry

7/95

NEG. ON FILE AT ANPP

VIEW OR # 78 FROM NORTH



LONGKE DOWNTOWN H. D.

LONGKE, LONGKE CO., AR

PHOTO BY H. BARRY

7/95

NEG. ON FILE AT A/HPP

VIEW OF #78 FROM NORTHWEST





LONGKE DOWNTOWN H. D.

LONGKE, LONGKE CO., AR

PHOTO BY H. BARRY

7/95

NEG. ON FILE AT AHPP

VIEW OF #82 FROM SOUTH







LONGKE DOWNTOWN H. D.

LONGKE, LONGKE Co., AR

PHOTO BY H. BARRY

7/95

NEG. ON FILE AT AHPP

VIEW OF #83 FROM SOUTH



LONGKE DOWNTOWN H. D.

LONGKE, LONGKE Co., AR

PHOTO BY H. BARRY

7/95

NEG. ON FILE AT AHPP

VIEW OF #84 FROM SOUTH





LONGKE DOWNTOWN H. D.

LONGKE, LONGKE Co., AR

PHOTO BY H. BARRY

7/95

NEG. ON FILE AT AHPP

VIEW OF #85 FROM SOUTH



GUNS  
&  
AMMO.

WE  
LOAN  
MONEY

INTERSTATE  
PAWN SHOP

BUY  
SELL  
TRADE

JEWELRY  
TOOLS  
TX'S  
& APPL.  
GOLD



SIMPSON'S  
PAWN SHOP





LONGOKE DOWNTOWN H. D.

LONGOKE, LONGOKE Co., AR

PHOTO BY H. BARRY

7/95

NEG. ON FILE AT AHPP

VIEW OF #86 FROM SOUTH



LONOKE DOWNTOWN H.D.

LONOKE, LONOKE CO., AR

PHOTO BY H. BARRY

7/95

NEG. ON FILE AT AHPP

VIEW OF #87 FROM SE





LONGKE DOWNTOWN H. D.  
LONGKE, LONGKE CO., AR  
PHOTO BY H. BARRY  
7/95

NEG. ON FILE AT AHPP

VIEW OF # 88 FROM SOUTH







LONOKE DOWNTOWN H. D.

LONOKE, LONOKE CO., AR

PHOTO BY H. BARRY

7/95

NEG. ON FILE AT AHPP

VIEW OF #89 FROM SOUTH





LONGKE DOWNTOWN H. D.

LONGKE, LONGKE CO., AR

PHOTO BY H. BARRY

7/95

NEG. ON FILE AT AHPP

VIEW OF #90 FROM WEST





LONGKE DOWNTOWN H. D.  
LONGKE, LONGKE CO., AR  
PHOTO BY H. BARRY

7/95

NEG. ON FILE AT AHPP

VIEW OF #91 FROM WEST





LONGKE DOWNTOWN H. D.

LONGKE, LONGKE CO., AR

PHOTO BY H. BARRY

7/95

NEG. ON FILE AT AHPP

VIEW OF #92 FROM WEST





LONOKE DOWNTOWN H. D.

LONOKE, LONOKE Co., AR

PHOTO BY H. BARRY

7/95

NEG. ON FILE AT AHPP

VIEW OF #93 FROM EAST





LONGKE DOWNTOWN H. D.

LONGKE, LONGKE Co., AR

PHOTO BY H. BARRY

7/95

NEG. ON FILE AT AHPP

STREETSCAPE OK #s 107 x 108

From SE







LONOKE DOWNTOWN H. D.

LONOKE, LONOKE CO., AR

PHOTO BY H. BARRY

7/95

NEG. ON FILE AT AHPP

VIEW OF # 108 FROM EAST



LONGKE DOWNTOWN H. D.

LONGKE, LONGKE Co., AR

PHOTO BY H. BARRY

7/95

NEG. ON FILE AT AHPP

VIEW OF #109 FROM EAST





LONOKE DOWNTOWN H. D.

LONOKE, LONOKE Co., AR

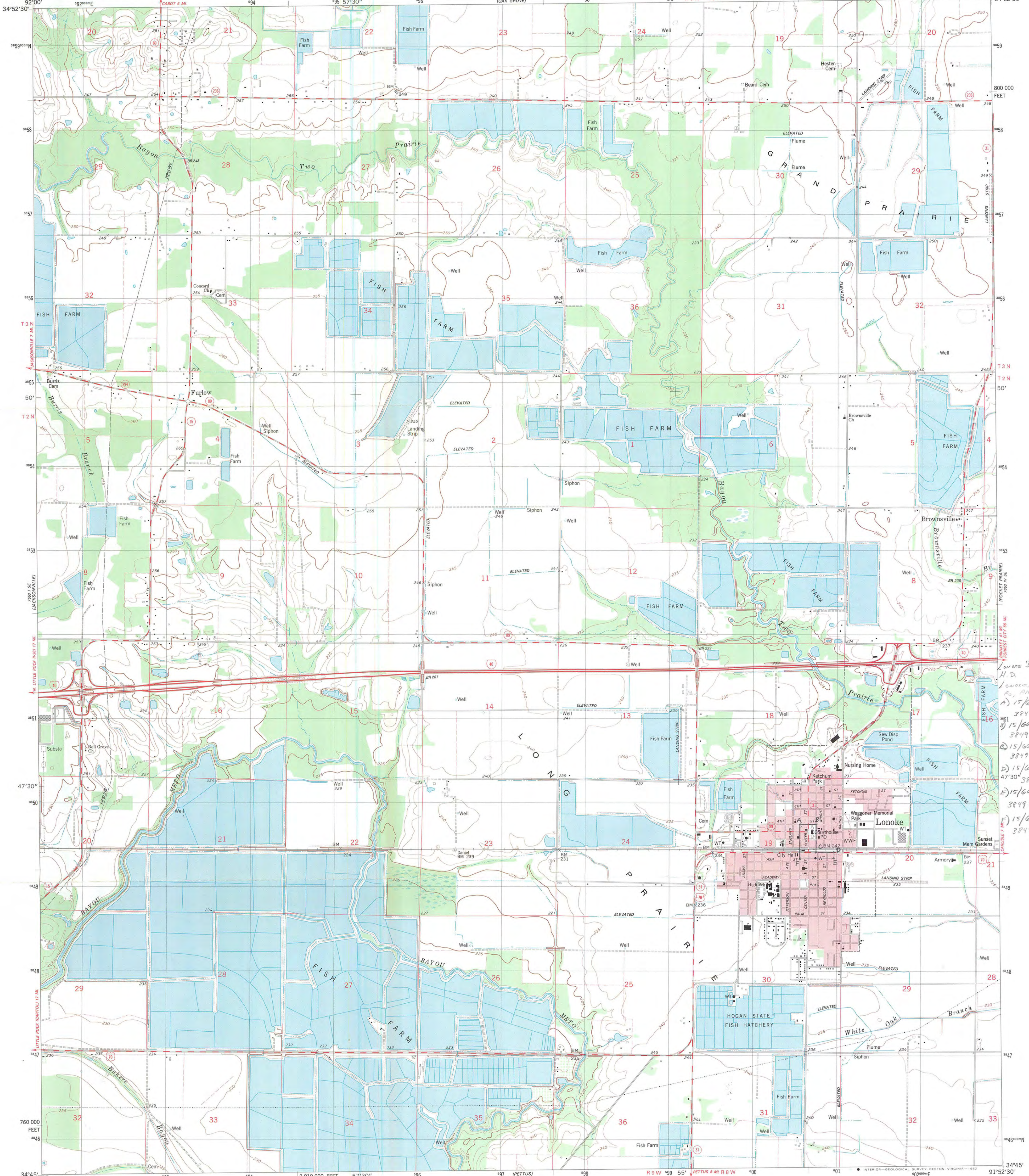
PHOTO BY H. BARRY

7/95

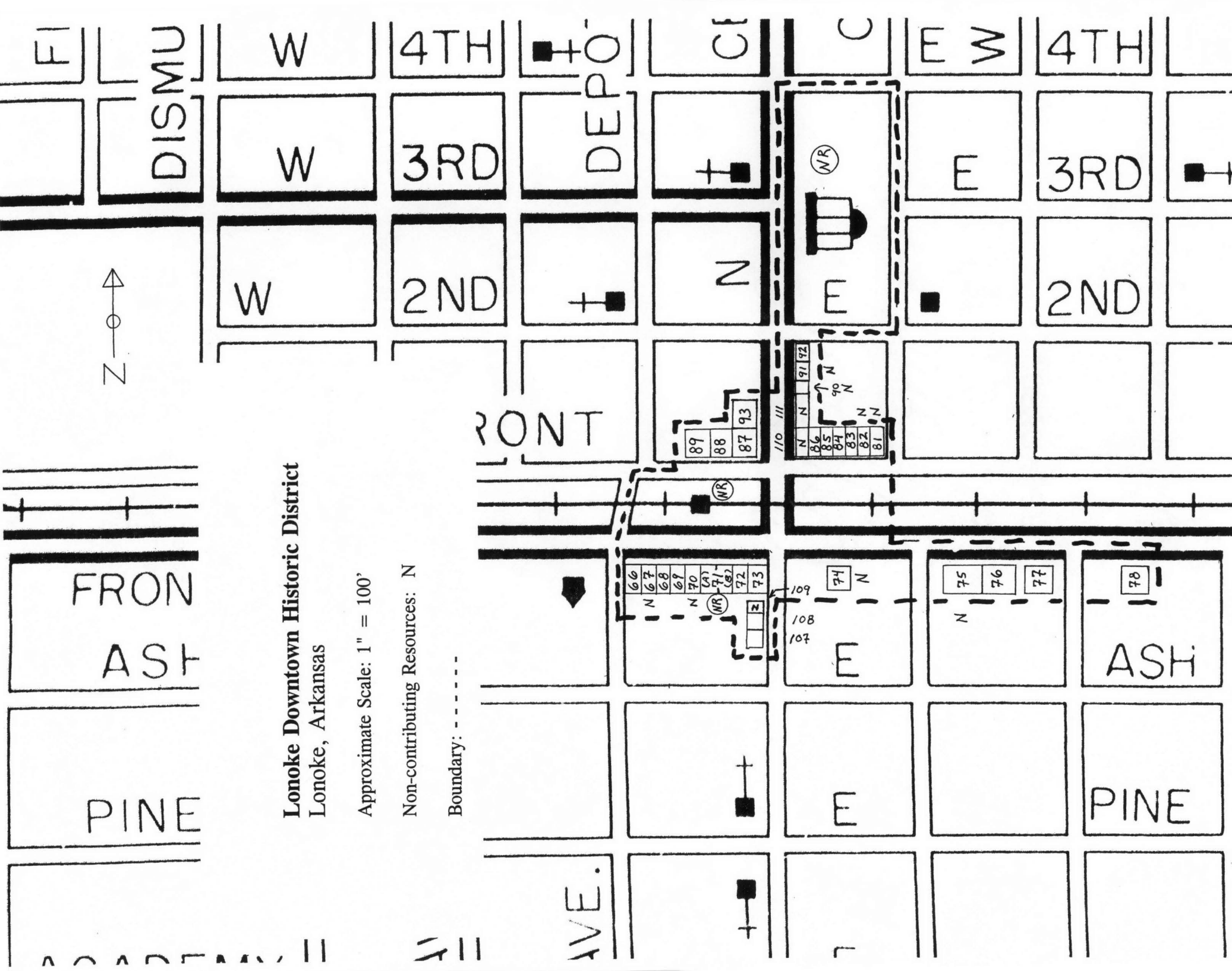
NEG. ON FILE AT ANPP

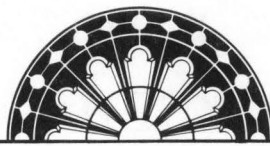
VIEW OF # 110 FROM SOUTH











ARKANSAS  
HISTORIC  
PRESERVATION  
PROGRAM



March 28, 1996

Carol D. Shull  
Chief of Registration  
United State Department of the Interior  
National Register of Historic Places  
National Park Service  
800 North Capitol Street, Suite 250  
Washington, D.C. 20002

RE: Lonoke Downtown Historic District  
Lonoke, Lonoke County

Dear Carol:

We are enclosing for your review the nomination of the above referenced property. The Arkansas Historic Preservation Program has complied with all applicable nominating procedures and notification requirements in the nomination process.

Thank you for your consideration in this matter.

Sincerely,

Cathy Buford Slater  
State Historic Preservation Officer

CBS:rm

Enclosures

