



UNITED STATES DEPARTMENT OF THE INTERIOR
NATIONAL PARK SERVICE

NATIONAL REGISTER OF HISTORIC PLACES
PROPERTY PHOTOGRAPH FORM

(Type all entries - attach to or enclose with photograph)

STATE Georgia	
COUNTY Wilkes	
FOR NPS USE ONLY	
ENTRY NUMBER	DATE
7/61 . I . I	APR 1 1972

1. NAME

COMMON: The Brickhouse

AND/OR HISTORIC: Arnold-Callaway Plantation House

2. LOCATION

STREET AND NUMBER:

Lexington-Washington Highway

CITY OR TOWN:

Near Washington

STATE:

Georgia

CODE

13

COUNTY:

Wilkes

CODE

317

3. PHOTO REFERENCE

PHOTO CREDIT: Jet Lowe

DATE OF PHOTO: December, 1970

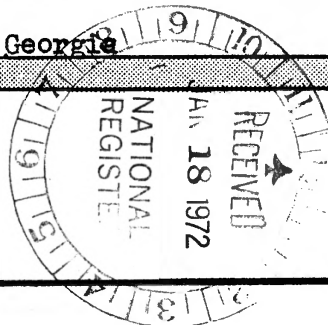
NEGATIVE FILED AT: Georgia Historical Commission

116 Mitchell Street, S.W., Atlanta, Georgia

4. IDENTIFICATION

DESCRIBE VIEW, DIRECTION, ETC.

North facade, three-quarter view



SEE INSTRUCTIONS



UNITED STATES DEPARTMENT OF THE INTERIOR
NATIONAL PARK SERVICE

NATIONAL REGISTER OF HISTORIC PLACES
PROPERTY PHOTOGRAPH FORM

(Type all entries - attach to or enclose with photograph)

STATE

Georgia

COUNTY

Wilkes

FOR NPS USE ONLY

ENTRY NUMBER

DATE

APR 11 1972

1. NAME

COMMON: Arnold-Callaway Plantation

AND/OR HISTORIC: Arnold-Callaway Plantation

2. LOCATION

STREET AND NUMBER:

Lexington-Washington Highway

CITY OR TOWN:

Near Washington

STATE:

Georgia

CODE

13

COUNTY:

Wilkes

CODE

317

3. PHOTO REFERENCE

PHOTO CREDIT: Jet Lowe

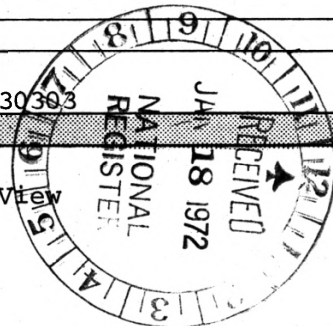
DATE OF PHOTO: December 1970

NEGATIVE FILED AT: Georgia Historical Commission
116 Mitchell St., Atlanta, Ga. 30303

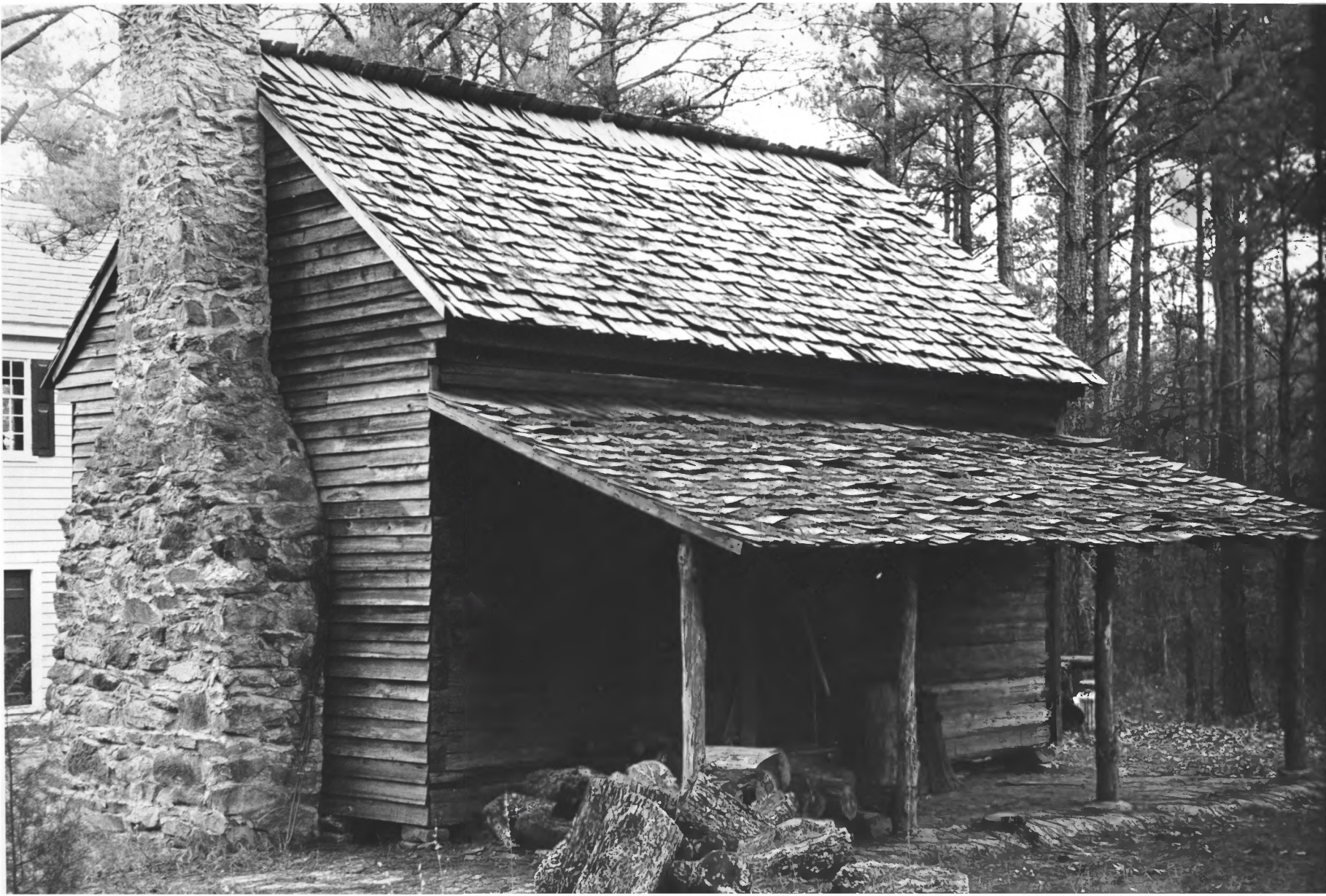
4. IDENTIFICATION

DESCRIBE VIEW, DIRECTION, ETC.

Parker Callaway Homestead, Full View



SEE INSTRUCTIONS



UNITED STATES DEPARTMENT OF THE INTERIOR
NATIONAL PARK SERVICE

NATIONAL REGISTER OF HISTORIC PLACES
PROPERTY PHOTOGRAPH FORM

(Type all entries - attach to or enclose with photograph)

STATE

Georgia

COUNTY

Wilkes

FOR NPS USE ONLY

ENTRY NUMBER

APR 11 1972

DATE

SEE INSTRUCTIONS

1. NAME

COMMON: Arnold-Callaway Plantation

AND/OR HISTORIC: Arnold-Callaway Plantation

2. LOCATION

STREET AND NUMBER:

Lexington-Washington Highway

CITY OR TOWN:

Near Washington

STATE:

Georgia

CODE

13

COUNTY:

Wilkes

CODE

317

3. PHOTO REFERENCE

PHOTO CREDIT: Jet Lowe

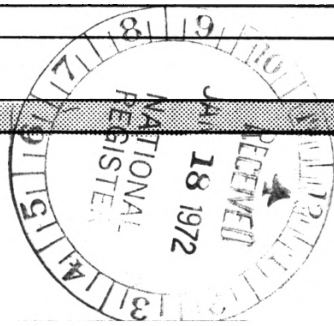
DATE OF PHOTO: December 1970

NEGATIVE FILED AT: Georgia Historical Commission
116 Mitchell St., Atlanta, Ga. 30303

4. IDENTIFICATION

DESCRIBE VIEW, DIRECTION, ETC.

Pioneer Cabin, Full View





UNITED STATES DEPARTMENT OF THE INTERIOR
NATIONAL PARK SERVICE

NATIONAL REGISTER OF HISTORIC PLACES
PROPERTY PHOTOGRAPH FORM

(Type all entries - attach to or enclose with photograph)

STATE Georgia	
COUNTY Wilkes	
FOR NPS USE ONLY	
ENTRY NUMBER APR 1 1972	DATE

1. NAME

COMMON: The Brickhouse

AND/OR HISTORIC: Arnold-Callaway Plantation House

2. LOCATION

STREET AND NUMBER:
Lexington-Washington Highway

CITY OR TOWN:
Near Washington

STATE: Georgia

CODE
13

COUNTY: Wilkes

CODE
317

3. PHOTO REFERENCE

PHOTO CREDIT: Jet Lowe

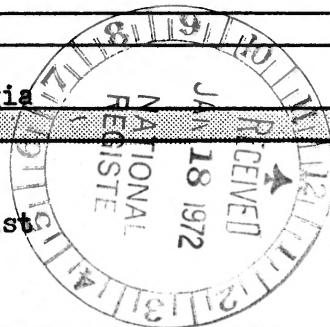
DATE OF PHOTO: December, 1970

NEGATIVE FILED AT: Georgia Historical Commission
116 Mitchell Street, S.W., Atlanta, Georgia

4. IDENTIFICATION

DESCRIBE VIEW, DIRECTION, ETC.

Rear, three-quarter view from the southeast



SEE INSTRUCTIONS