

UNITED STATES DEPARTMENT OF THE INTERIOR
NATIONAL PARK SERVICE

FOR NPS USE ONLY

RECEIVED JUN 7 1978

DATE ENTERED

FEB 2 1979

NATIONAL REGISTER OF HISTORIC PLACES
INVENTORY -- NOMINATION FORMSEE INSTRUCTIONS IN HOW TO COMPLETE NATIONAL REGISTER FORMS
TYPE ALL ENTRIES -- COMPLETE APPLICABLE SECTIONS

1 NAME

HISTORIC

Holly Grove Historic District

AND/OR COMMON

2 LOCATION

STREET & NUMBER

Main & Pine Sts.

NOT FOR PUBLICATION

CITY, TOWN

Holly Grove

VICINITY OF

First

STATE

Arkansas

CODE

05

COUNTY

Monroe

CODE

095 ✓

3 CLASSIFICATION

CATEGORY

☒ DISTRICT☐ BUILDING(S)☐ STRUCTURE☐ SITE☐ OBJECT

OWNERSHIP

☒ PUBLIC☐ PRIVATE☒ BOTH

PUBLIC ACQUISITION

☐ IN PROCESS☐ BEING CONSIDERED

STATUS

☒ OCCUPIED☒ UNOCCUPIED☐ WORK IN PROGRESS

ACCESSIBLE

☒ YES: RESTRICTED☒ YES: UNRESTRICTED☐ NO

PRESENT USE

☐ AGRICULTURE☒ COMMERCIAL☐ EDUCATIONAL☐ ENTERTAINMENT☐ GOVERNMENT☐ INDUSTRIAL☐ MILITARY☐ MUSEUM☐ PARK☐ PRIVATE RESIDENCE☐ RELIGIOUS☐ SCIENTIFIC☐ TRANSPORTATION☐ OTHER:

4 OWNER OF PROPERTY

NAME

See attached sheet.

STREET & NUMBER

CITY, TOWN

STATE

VICINITY OF

5 LOCATION OF LEGAL DESCRIPTION

COURTHOUSE,
REGISTRY OF DEEDS, ETC.Circuit Clerk's Office

STREET & NUMBER

Monroe County Courthouse

CITY, TOWN

Clarendon

STATE

Arkansas

6 REPRESENTATION IN EXISTING SURVEYS

TITLE

DATE

☐ FEDERAL ☐ STATE ☐ COUNTY ☐ LOCALDEPOSITORY FOR
SURVEY RECORDS

CITY, TOWN

STATE

7 DESCRIPTION

CONDITION

__EXCELLENT

☒GOOD

__FAIR

__DETERIORATED

__RUINS

__UNEXPOSED

CHECK ONE

__UNALTERED

☒ALTERED

CHECK ONE

☒ORIGINAL SITE

__MOVED

DATE _____

DESCRIBE THE PRESENT AND ORIGINAL (IF KNOWN) PHYSICAL APPEARANCE

The Holly Grove Historic District is a collection of twenty late-nineteenth and early twentieth-century commercial structures that form the center of the business district of the small Arkansas town. The buildings, in attached rows, line both sides of Main Street and are separated by a large grass-filled median that was once the right-of-way for the Missouri Pacific Railroad.

Beginning at the corner of Second and Smith, the boundary of the Holly Grove Historic District runs one-half block south on Smith to the alley between Main and Second Streets. It then turns west and runs one block and two lots where it turns south and indents to Pine Street where it runs to the alley immediately south of Main Street. There it travels east one block to Smith Street, north one-half block to Main Street, east three and one-half lots and north to Second Street and finally west to Smith Street.

The district is surrounded by residential neighborhoods. The structures in the Holly Grove Historic District are similar in design and scale. As a rule, the buildings are low one or two-storey, rectangular, brick structures that are embellished with decorative corbelling and possess a variety of cornice and parapet treatments. The typical street-scape is that of a continuous row of attached buildings set adjacent to the sidewalk. Many of the buildings have few alterations as a number have escaped the common attempt by businesses to modernize the facade of the first storey through alteration. Therefore, a number of relatively plain turn-of-the-century business structures have survived with their visual integrity intact. Of the buildings which do not retain facade integrity, one has been stuccoed and three present variations in the use of facade shingling and antique brick. There are no intrusions in the Holly Grove Historic District and only two structures originally in the area have been destroyed, the lots now being vacant.

The Walls Building (Photo #4) is a brick single storey commercial structure with four storefronts and chamfered entrances. The building features cast iron columns and a pressed tin cornice. The building in Photo # 3 is an irregularly shaped, single storey brick structure. It has a raked cornice and filigree iron air vents. Openings have been altered. Entrance to the structure is on a chamfered corner. The King Motor Company (Photo # 6) is a single storey, brick structure of irregular shape. The roof of the protico is supported by brick piers. The building's roof is flat. The Bank of Holly Grove (Photo

UNITED STATES DEPARTMENT OF THE INTERIOR
NATIONAL PARK SERVICE

**NATIONAL REGISTER OF HISTORIC PLACES
INVENTORY -- NOMINATION FORM**

FOR NPS USE ONLY

JUN 7 1978

RECEIVED

DATE ENTERED

FEB 2 1979

CONTINUATION SHEET

ITEM NUMBER 7 PAGE 1

9) is a three bay brick structure, one storey in height. The three bays are divided by brick pilasters with stone capitals which support the frieze with a stone cornice above. The building on the left in Photo # 10 is a single storey commercial structure with three storefronts which are separated by brick piers. The structure features a raked and dentiled cornice. The building adjacent on the right in Photo # 10 is a single story frame structure with a tin roof. A tin hood covers the entrance. Brooks' Rexall (Photo # 11) is a two-storey brick structure. The store fronts are altered and openings on the second storey have been infilled. Between second storey openings are brick piers. The cornice is dentiled. The building to the right of the Drugstore (Photo# 11) is a single storey brick building featuring a stone lintel above the storefront and a stone cornice.

The R. Abramson Building (Photo# 12) is a stuccoed single storey brick structure. There are two store fronts. The entrance to the store is recessed and divided from the windows by metal columns. One entrance has been altered. The Franks Grocery Building (Photo # 13) is a single storey brick structure with a dentiled metal cornice supported by metal brackets at each end. The store front is wooden and the chamfered entrance contains double doors. The J. R. Pinlard and Sons Building (Photo # 14) is a three bay brick commercial structure. The parapets have stone coping and the middle bay is higher than the two side bays. Bays are articulated with a sailor cource. Brick piers separate the fronts. Over each front is a sixlight transom. The three entrances are recessed.

The Depot is a single storey structure once frame but now stuccoed (Photo # 5). Photo # 15 shows two attached buildings two storey on the left and one-storey on the right. These storefronts have been much altered but the original fabric of the structures remains under the aluminum front.

8 SIGNIFICANCE

PERIOD	AREAS OF SIGNIFICANCE -- CHECK AND JUSTIFY BELOW			
<input type="checkbox"/> PREHISTORIC	<input type="checkbox"/> ARCHEOLOGY-PREHISTORIC	<input type="checkbox"/> COMMUNITY PLANNING	<input type="checkbox"/> LANDSCAPE ARCHITECTURE	<input type="checkbox"/> RELIGION
<input type="checkbox"/> 1400-1499	<input type="checkbox"/> ARCHEOLOGY-HISTORIC	<input type="checkbox"/> CONSERVATION	<input type="checkbox"/> LAW	<input type="checkbox"/> SCIENCE
<input type="checkbox"/> 1500-1599	<input checked="" type="checkbox"/> AGRICULTURE	<input type="checkbox"/> ECONOMICS	<input type="checkbox"/> LITERATURE	<input type="checkbox"/> SCULPTURE
<input type="checkbox"/> 1600-1699	<input type="checkbox"/> ARCHITECTURE	<input type="checkbox"/> EDUCATION	<input type="checkbox"/> MILITARY	<input type="checkbox"/> SOCIAL/HUMANITARIAN
<input type="checkbox"/> 1700-1799	<input type="checkbox"/> ART	<input type="checkbox"/> ENGINEERING	<input type="checkbox"/> MUSIC	<input type="checkbox"/> THEATER
<input checked="" type="checkbox"/> 1800-1899	<input checked="" type="checkbox"/> COMMERCE	<input type="checkbox"/> EXPLORATION/SETTLEMENT	<input type="checkbox"/> PHILOSOPHY	<input checked="" type="checkbox"/> TRANSPORTATION
<input checked="" type="checkbox"/> 1900-	<input type="checkbox"/> COMMUNICATIONS	<input type="checkbox"/> INDUSTRY	<input type="checkbox"/> POLITICS/GOVERNMENT	<input type="checkbox"/> OTHER (SPECIFY)
		<input type="checkbox"/> INVENTION		

SPECIFIC DATES

BUILDER/ARCHITECT

STATEMENT OF SIGNIFICANCE

The Holly Grove Historic District is a concentrated collection of commercial structures in the downtown area of a small turn-of-the-century town. This area contains twenty commercial structures facing a Main Street divided by a wide green space. Originally railroad tracks ran through this center space in town but have been removed. Reflective of the significance of the railroad in the development of Holly Grove, the railroad depot stands at the major downtown intersection.

The Holly Grove Historic District is bounded on all sides by residential areas. The district is a significant example of a rural farming community. The population is basically composed of families whose ancestors farmed the thousands of acres of rich delta land surrounding the town. A town rich in southern history, Holly Grove is basically original in appearance.

Although Holly Grove is and has always been a farming community, the development of the railroad was the major factor in formation of the town. The land incorporated in Holly Grove was originally included in a land grant of November 15, 1836 to Henry Augustus Fay. In 1836 Holly Grove was a small community of plantation families. A more heavily populated community called Lawrenceville was located south of the railroad on Maddox Bay and was the governmental center of Monroe County until 1857 when Clarendon became the county seat. With the coming of the railroad in 1873, the population shifted from Lawrenceville and other surrounding areas to concentrate near the railraod tracks. On July 25, 1876 the town of Holly Grove was officially incorporated. The name Holly Grove was derived from the many thickets of Holly trees in the area.

The business district built up on either side of the railroad tracks which ran through the center of town. Jack and James Kerr, two plantation owners, gave the land for development of the town. It experienced a surge of growth in the early twentieth century. Around 1910 a local farmer, June Davidson acquired a contract with the railroad for manufacture of cross-ties. This contract brought about universal prosperity

9 MAJOR BIBLIOGRAPHICAL REFERENCES

See attached sheet.

10 GEOGRAPHICAL DATA

ACREAGE OF NOMINATED PROPERTY 10

QUADRANGLE NAME Holly Grove, Ark.

QUADRANGLE SCALE 1:24000

UTM REFERENCES

A 1,5 6,6,5 1,2,0 3,8 29-560 4,2,0

B 1,5 6,6,5 1,0,0 3,8 29-360 4,2,0

ZONE EASTING NORTHING

ZONE EASTING NORTHING

C 1,5 6,6,4 8,8,0 3,8 29-400 5,8,0

D 1,5 6,6,4 8,8,0 3,8 29-400 4,0,0

E

F

G

H

VERBAL BOUNDARY DESCRIPTION

LIST ALL STATES AND COUNTIES FOR PROPERTIES OVERLAPPING STATE OR COUNTY BOUNDARIES

STATE

CODE

COUNTY

CODE

STATE

CODE

COUNTY

CODE

11 FORM PREPARED BY

NAME / TITLE

Research-Mrs. Donald Dearing; Frezil Miller & Sandra Smith, Historians

Edited by: Mike Shinn, Historian
Arkansas Historic Preservation Program

DATE

March 3, 1978

STREET & NUMBER

TELEPHONE

Suite 500, Continental Building

501-371-2763

CITY OR TOWN

STATE

Little Rock

Arkansas 72201

12 STATE HISTORIC PRESERVATION OFFICER CERTIFICATION

THE EVALUATED SIGNIFICANCE OF THIS PROPERTY WITHIN THE STATE IS:

NATIONAL

STATE

LOCAL X

As the designated State Historic Preservation Officer for the National Historic Preservation Act of 1966 (Public Law 89-665), I hereby nominate this property for inclusion in the National Register and certify that it has been evaluated according to the criteria and procedures set forth by the National Park Service.

STATE HISTORIC PRESERVATION OFFICER SIGNATURE

TITLE

DATE

5-17-78

FOR NPS USE ONLY

I HEREBY CERTIFY THAT THIS PROPERTY IS INCLUDED IN THE NATIONAL REGISTER

DATE

2-2-79

KEEPER OF THE NATIONAL REGISTER

ATTEST:

DATE

1-30-79

CHIEF OF REGISTRATION

UNITED STATES DEPARTMENT OF THE INTERIOR
NATIONAL PARK SERVICE

**NATIONAL REGISTER OF HISTORIC PLACES
INVENTORY -- NOMINATION FORM**

FOR NPS USE ONLY
JUN 7 1978
RECEIVED
DATE ENTERED FEB 2 1979

CONTINUATION SHEET

ITEM NUMBER 8

PAGE 1

to the area. By 1917 Holly Grove had established a newspaper. A theater opened in 1920 and in 1927 a modern gas station was constructed.

This early twentieth century period of prosperity and development was marked by the growth of the downtown district. Although the buildings in the Holly Grove Historic District were not designed with any particular concept of theme, they are historically significant in that their contiguency creates an atmosphere reflective of the transitional growth of the town.

Architecturally, the Holly Grove Historic District is a good example of vernacular commercial design. The twenty structures in the district link to form a contiguous original appearance of a turn-of-the-century community. Despite disrepair and alterations, this collection of buildings is the greatest concentration of significant structures in the area.

The structures in the Holly Grove Historic District are similar in scale and design. The buildings in Photos 1 and 2, as a rule, are low one or two-storey, rectangular, brick structures which are embellished with decorative corbelling and possess a variety of cornice and parapet treatments. Most of the buildings are set adjacent to the sidewalk. The typical streetscape is that of a continuous row of attached buildings immediately fronting the sidewalk. Many buildings have not been altered on either the first or second storey. The building in Photo # 3 is situated on a corner lot and presents an entrance set at an oblique angle. The Walls Building features a pressed tin facade (Photo# 4). Only a few buildings do not retain the integrity of their original facade appearance. One building has been stuccoed, and three other structures present variations in the use of facade shingling and antique brick. The Depot (Photo # 5) is a major adaptive reuse, as it now serves as the "Bent Rail Restaurant".

The present day Holly Grove reflects its beginnings through its buildings. Old family names are found on the structures and business signs. Abramson, Walls, Dial, Mayo, Renfro, Lambert and Swift are all family names associated as strongly with the past as with the present of Holly Grove.

UNITED STATES DEPARTMENT OF THE INTERIOR
NATIONAL PARK SERVICE

**NATIONAL REGISTER OF HISTORIC PLACES
INVENTORY -- NOMINATION FORM**

FOR NPS USE ONLY

RECEIVED JUN 7 1978

DATE ENTERED

FEB 2 1979

CONTINUATION SHEET

ITEM NUMBER 8 PAGE 2

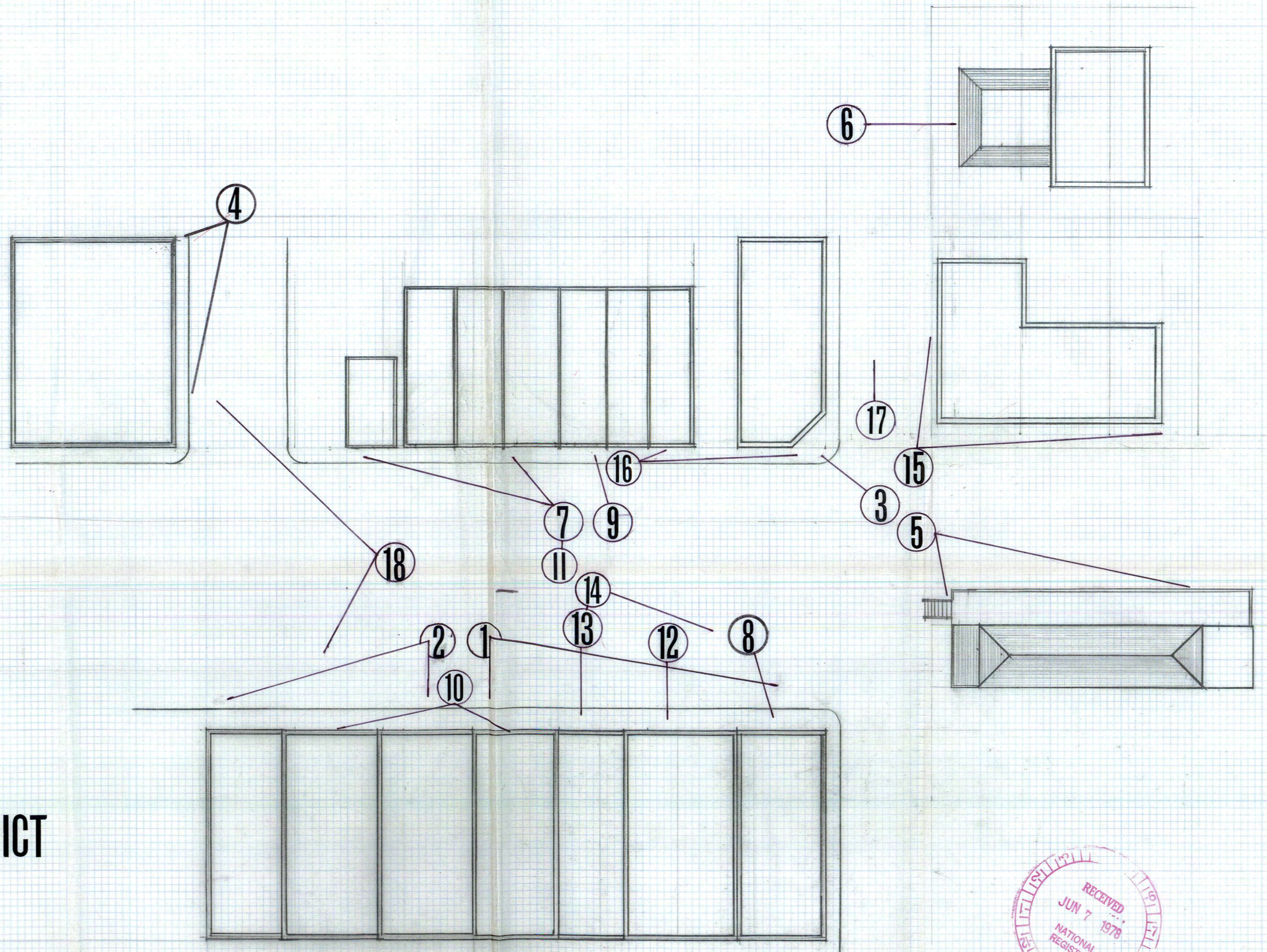
The King Motor Company (Photo# 6) was constructed in 1927 by Rue Abramson for \$10,000. The building measures 40x80 feet with a 20 foot overhang for the driveway. In 1927 there were eleven gasoline pumps on Holly Grove's Main Street, located in front of various stores. The construction of the King Motor Company marked a major step in the modernization of the town. It made free air for tires available and installed the first public drinking fountain in Holly Grove.

The oldest structure still standing in the Holly Grove Historic District is situated on the west one-half of lot 20 (see map). (one-storey frame structure in Photo # 7). It was constructed before 1890 and has been used as either a general mercantile store or grocery store since its construction.

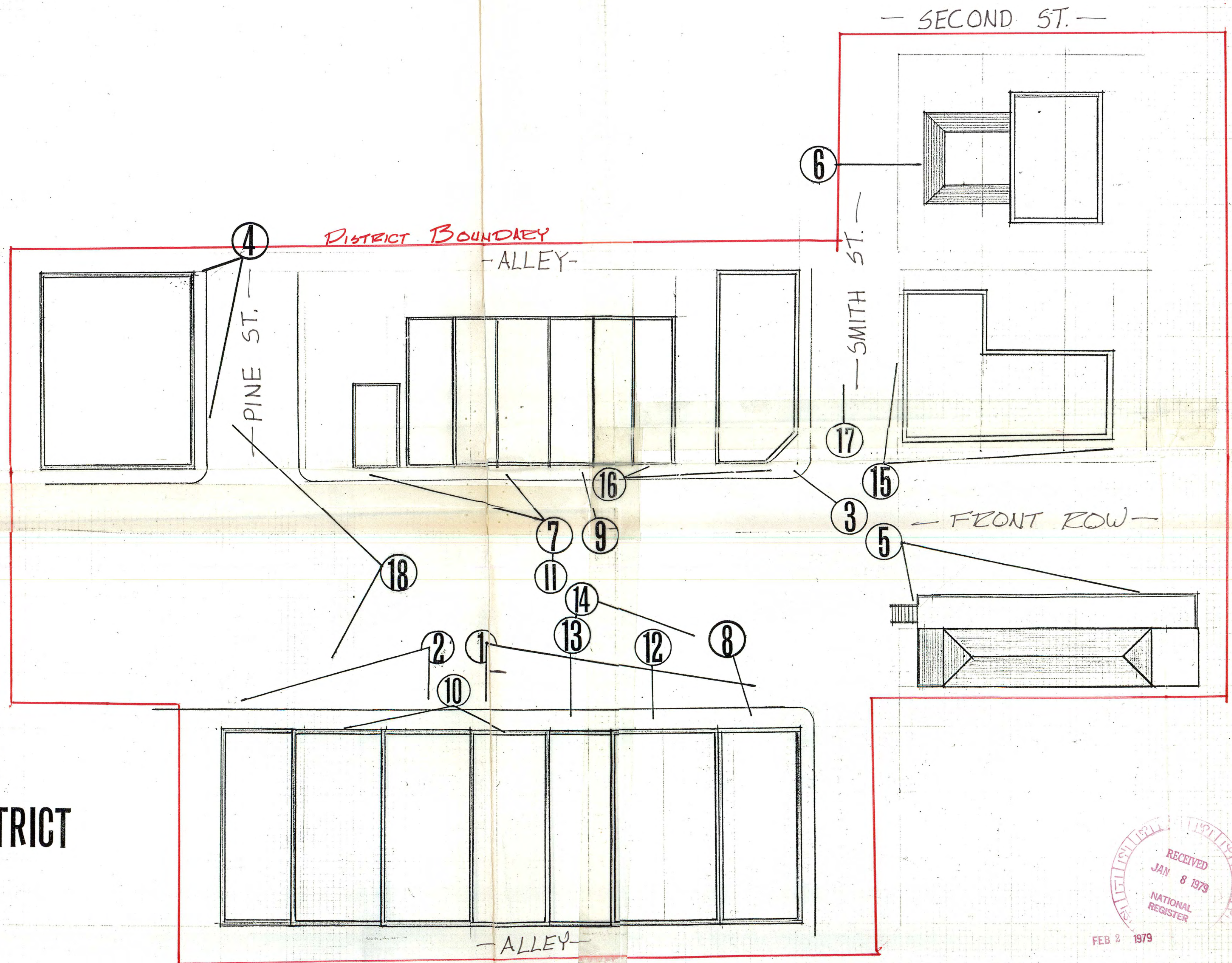
Perhaps the most important structure to the town, the Railroad Depot was built in 1898 by the Arkansas Midland Railroad Company. A J. M. Smith donated the lot for the depot. The exterior of the building was originally of one-inch cypress boards. In 1928 the depot was stuccoed. Originally the depot was painted yellow with brown trim. This color scheme has been maintained since its construction. The depot served as an office for the Wells Fargo and Company Express. Pivotal in historic significance, the depot served as the central outlet for all travel in the area. The railroad offered a mode of transportation for moving farm products to market. All goods coming into Holly Grove came in the train. The railroad tracks have been taken out in recent years and the depot sold to local interests. Since 1974 the depot has been owned by the Holly Grove Depot Development Corporation.

Another landmark in the Holly Grove Historic District is the Pump House (Photo # 8). Located on Main Street, facing north the Pump House was the site of a watering trough with a hand pump. Used in the days when cotton was brought to the gin in wagons and pulled by teams of mules, the watering trough played a significant role in the character and atmosphere of the rural community's downtown. Later the pump was covered with a roof and benches were put inside. In 1923 the pump house was bricked and the roof covered.

HOLLY GROVE
HISTORIC DISTRICT



HOLLY GROVE HISTORIC DISTRICT



Property

Holy Grove Historic District

State

Ark.

Working Number

6.7.78 3337

79000446

TECHNICAL

Photos

18

Maps

2

Picasso
MHC

CONTROL

OK - 6.8.78

HISTORIAN

- No architectural masterpieces - but the collection is certainly reflective of a small Southern town. - several few alterations beyond woodshake pigeons on stores
 - Eligible resource but acreage, UBO + boundary not within sketch map ^{all} needs to be supplied. - Return maps - info.

ARCHITECTURAL HISTORIAN

Accept
 Blaham
 10.4.78 1.30.79

With new

ARCHEOLOGIST

OTHER

HAER

Inventory _____

Review _____

REVIEW UNIT CHIEF

With resolution of technical/map needs, this is a good property to list. Its significance is appropriately described in context of vernacular commercial architecture that reflects the kind of farming community that surrounded/supported it - and the primary ~~fa~~ business families who lived in the community.

Maps - have

BRANCH CHIEF

KEEPER

National Register Write-up

Federal Register Entry

3-6-79

Send-back _____

Re-submit _____

Entered

FEB 2 1979

INT:2106-74



1. Holly Grove Historic District
2. Holly Grove, Arkansas
3. Sandra Taylor Smith
4. February, 1978
5. Arkansas Historic Preservation Program
6. south side of commercial area; viewed
from the north
7. # 1

Monroe County

FEB 2 1979

JUN 7 1978



1. Holly Grove Historic District
2. Holly Grove, Arkansas
3. Sandra Taylor Smith
4. February, 1978
5. Arkansas Historic Preservation Program
6. south side of commercial area; viewed
from the northeast
7. # 2

MONROE
COUNTY

FEB 2 1979 JUN 7 1978



1. Holly Grove Historic District
2. Holly Grove, Arkansas
3. Sandra Taylor Smith
4. February, 1978
5. Arkansas Historic Preservation Program
6. Harrod's Laundromat
viewed from the southeast
7. # 3

*Monroe
County*

FEB 2 1979 JUN 7 1978



1. Holly Grove Historic District
2. Holly Grove, Arkansas
3. Sandra Taylor Smith
4. February, 1978
5. Arkansas Historic Preservation Program
6. Walls Building; viewed from the north-east
7. # 4

MONROE
County

FEB 2 1979 JUN 7 1978



1. Holly Grove Historic District
2. Holly Grove, Arkansas
3. Sandra Taylor Smith
4. February, 1978
5. Arkansas Historic Preservation Program
6. Depot; viewed from the northwest
7. # 5

*Monroe
County*

FEB 2 1979

JUN 7 1978



1. Holly Grove Historic District
2. Holly Grove, Arkansas
3. Sandra Taylor Smith
4. February, 1978
5. Arkansas Historic Preservation Program
6. King Motor Company; viewed from the southwest
7. # 6

*MONROE
County*

JUN 7 1978

FEB 2 1979



1. Holly Grove Historic District
2. Holly Grove, Arkansas
3. Sandra Taylor Smith
4. February, 1978
5. Arkansas Historic Preservation Program
6. viewed from the southwest; note
one-storey frame store(third building
from the right)
7. # 7

MONROE
County

FEB 2 1979

JUN 7 1978



1. Holly Grove Historic District
2. Holly Grove, Arkansas
3. Sandra Taylor Smith
4. February, 1978
5. Arkansas Historic Preservation Program
6. pump house; viewed from the north
7. # 8

*Monroe
County*

JUN 7 1978

FEB 2 1979



1. Holly Grove Historic District
2. Holly Grove, Arkansas
3. Sandra Taylor Smith
4. February, 1978
5. Arkansas Historic Preservation Program
6. Bank of Holly Grove; viewed from the south
7. # 9

*Monroe
County*

JUN 7 1978

FEB 2 1979



1. Holly Grove Historic District
2. Holly Grove, Arkansas
3. Sandra Taylor Smith
4. February, 1978
5. Arkansas Historic Preservation Program
6. south side; viewed from the north
7. # 10

*Monroe
County*

FEB 2 1979

JUN 7 1978



1. Holly Grove Historic District
2. Holly Grove, Arkansas
3. Sandra Taylor Smith
4. February, 1978
5. Arkansas Historic Preservation Program
6. north row of buildings; note Drugstore
and building to the right of Drugstore
7. # 11

*MONROE
County*

FEB 2 1979

JUN 7 1978



1. Holly Grove Historic District
2. Holly Grove, Arkansas
3. Sandra Taylor Smith
4. February, 1978
5. Arkansas Historic Preservation Program
6. R. Abramson Company Building; viewed
from the north
7. # 12

*Monroe
County*

JUN 7 1978

FEB 2 1979

14



1. Holly Grove Historic District
2. Holly Grove, Arkansas
3. Sandra Taylor Smith
4. February, 1978
5. Arkansas Historic Preservation Program
6. Franks Grocery Building; viewed from
the north
7. # 13

*Monroe
County*

FEB 2 1979 JUN 7 1978



1. Holly Grove Historic District
2. Holly Grove, Arkansas
3. Sandra Taylor Smith
4. February, 1978
5. Arkansas Historic Preservation Program
6. south row of buildings; note the
J. R. Pinlard and Sons Building (on
left end of row)
7. # 14

*Monroe
County*

JUN 7 1978

FEB 2 1979



1. Holly Grove Historic District
2. Holly Grove, Arkansas
3. Sandra Taylor Smith
4. February, 1978
5. Arkansas Historic Preservation Program
6. viewed from the southwest
7. # 15

Monroe
County

JUN 7 1978

FEB 2 1979



1. Holly Grove Historic District
2. Holly Grove, Arkansas
3. Sandra Taylor Smith
4. February, 1978
5. Arkansas Historic Preservation Program
6. looking to the east from the north
row of structures; viewed from the
west
7. #16

MONROE
COUNTY

FEB 2 1979 JUN 7 1978



1. Holly Grove Historic District
2. Holly Grove, Arkansas
3. Sandra Taylor Smith
4. February, 1978
5. Arkansas Historic Preservation Program
6. looking north: viewed from the depot
7. # 17

Monroe
County

JUN 7 1978

FEB 2 1979



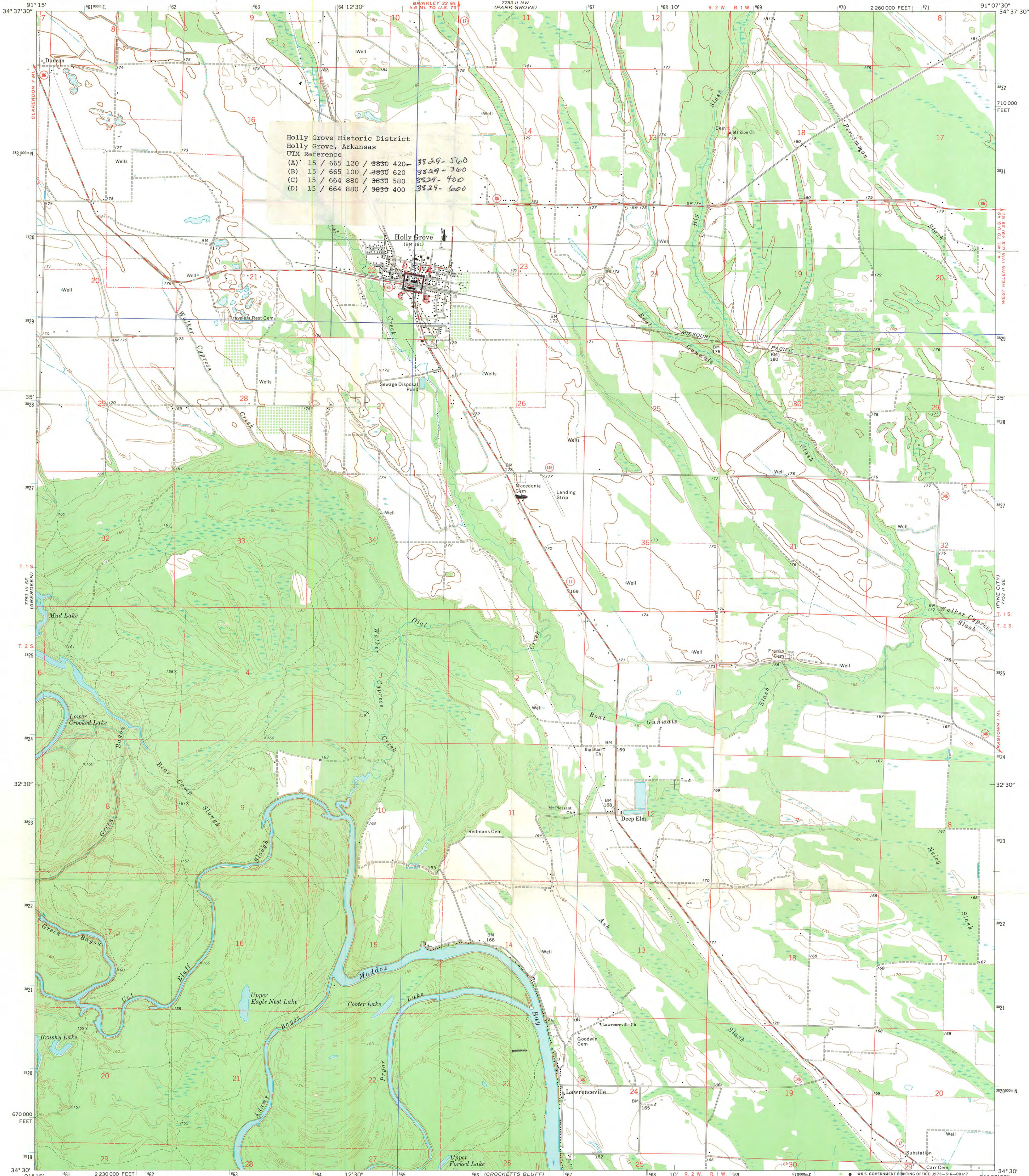
1. Holly Grove Historic District
2. Holly Grove, Arkansas
3. Sandra Taylor Smith
4. February, 1978
5. Arkansas Historic Preservation Program
6. open space in center of district;
viewed from the east
7. # 18

*Monroe
County*

FEB 2 1979 JUN 7 1978

UNITED STATES
DEPARTMENT OF THE INTERIOR
GEOLOGICAL SURVEY

HOLLY GROVE QUADRANGLE
ARKANSAS—MONROE CO.
7.5 MINUTE SERIES (TOPOGRAPHIC)
SW 4 HOLLY GROVE 15' QUADRANGLE



Holly Grove Historic District
Holly Grove, Arkansas
UTM Reference
(A) 15 / 665 120 / 3830 420- 3829-560
(B) 15 / 665 100 / 3830 620 3829-360
(C) 15 / 664 880 / 3830 580 3829-460
(D) 15 / 664 880 / 3830 400 3829-600

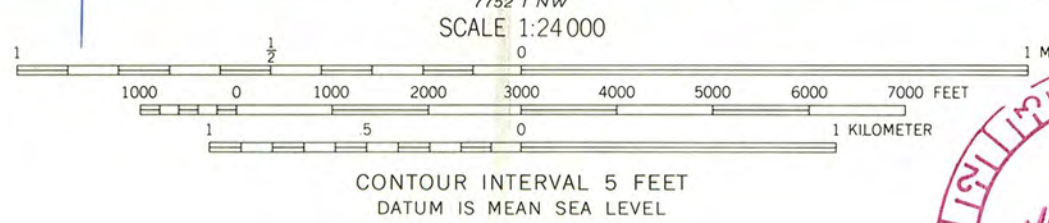
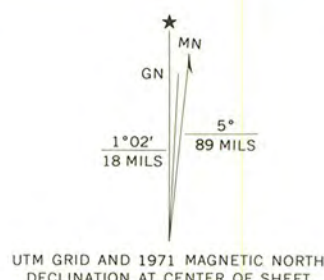
Maped, edited, and published by the Geological Survey

Control by USGS and USC&GS

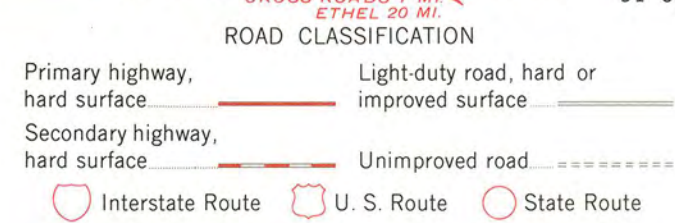
Topography by photogrammetric methods from aerial
photographs taken 1970. Field checked 1971

Polyconic projection. 1927 North American datum
10,000-foot grid based on Arkansas coordinate system, south zone
1000-meter Universal Transverse Mercator grid ticks,
zone 15, shown in blue

Fine red dashed lines indicate selected fence and field lines where
generally visible on aerial photographs. This information is unchecked



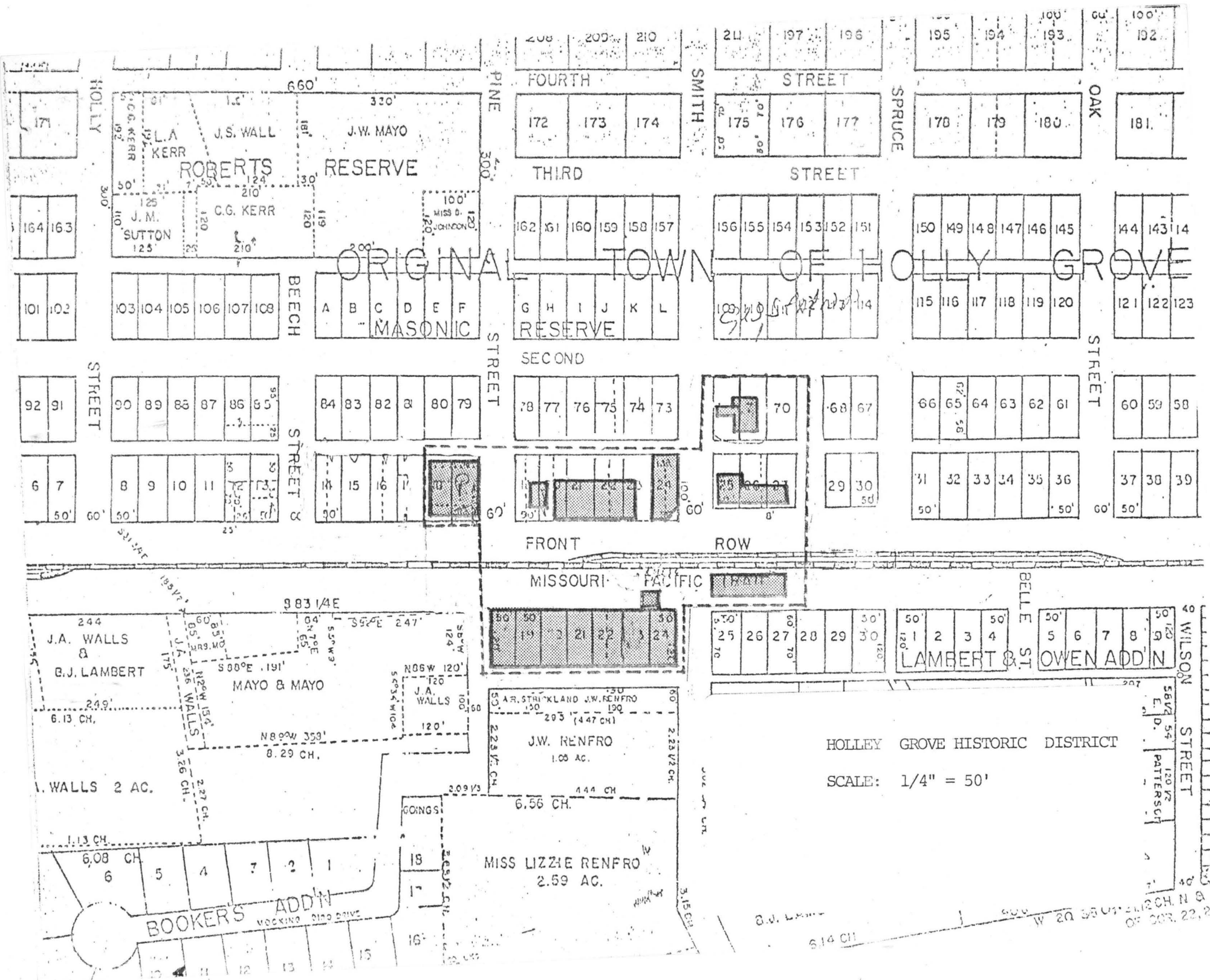
THIS MAP COMPLIES WITH NATIONAL MAP ACCURACY STANDARDS
FOR SALE BY U.S. GEOLOGICAL SURVEY, DENVER, COLORADO 80225, OR WASHINGTON, D.C. 20540
AND BY THE ARKANSAS GEOLOGICAL COMMISSION, LITTLE ROCK, ARKANSAS 72201
A FOLDER DESCRIBING TOPOGRAPHIC MAPS AND SYMBOLS IS AVAILABLE ON REQUEST



HOLLY GROVE, ARK.
SW 4 HOLLY GROVE 15' QUADRANGLE
N3430-W9107.5/7.5

1971

AMS 7753 II SW-SERIES V884



ATTN. BILL LEOVICH

Dear Bill:

Although the Holly Grove Historic District may appear to be not so historically valuable, we are 100% behind the nomination. There are a couple of good reasons behind our support. First, we have been welcomed to do a National Register District in Holly Grove. This is quite the opposite of the usual paranoia with which we have been received in other National Register situations. Secondly, the citizens and property owners of Holly Grove are going to revitalize their downtown. We are venturing out in a new direction in trying to assist them in thinking out and accomplishing a plan whereby the town can come alive again. I have held about 4 public meetings there so far and the people are really involved in making Holly Grove into something they feel reflects their heritage as well as present needs. I took a survey sheet asking questions which relate to the needs of the people in relation with revitalizing the town to the schools, churches, clubs etc. The response was tremendous and the main result from the survey is that it made them think about their town and realize it is theirs. A money drive has been started to do some landscape design in the center strip and they already have received well over \$3000. The AHPP architectural section is working closely with the store owners in renovation of their buildings.

In general, I am saying the people of Holly Grove are anxious to renovate their downtown and through the National Register they will receive the incentive (emotional as well as financial) to finish what they have begun. Anne is most excited about this project and we are hoping to have a concrete example of the results of the National Register as a planning tool.

Thanks,

Jandy



Sources of information

- 1--The Brinkley Argus files, Brinkley, Arkansas
- 2--The Sentinel, Clarendon, Arkansas
- 3--The Monroe County Sun, Clarendon, Arkansas
- 4--Records in Menard Abstract office, Clarendon, Arkansas
- 5--Records in Circuit Clerk's office, Clarendon, Arkansas
- 6--"Pages From the Past" by Jo Claire English
- 7--Goodspeed's History of Eastern Arkansas, 1890 edition
- 8--Methodist women's cookbook, Holly Grove
- 9--Holly Grove Centennial Book, published 1976
- 10--Kerr Lodge #195 secretary's book (minutes)
- 11--Ledger from Branch and Walls Company
- 12--First ledger from Bank of Holly Grove
- 13--Secretary's book from Holly Grove Fire Department
- 14--Ledger from Mayo and Mayo
- 15--Abstract from O.W. McCastlain
- 16--Bank of Holly Grove charter
- 17--History of Presbyterian Church (Holly Grove)
- 18--Newspaper clippings from Arkansas Gazette, Commercial Appeal and Arkansas Democrat
- 19--~~Letters~~ from former Holly Grove residents
- 20--Snapshots and other pictures of the town in earlier days
- 21--Old records found in attic of Missouri Pacific depot
- 22--Abstract from Rev. L.F. Piercey



Interviews with the following people:

Mrs. Lecil Kerr	Mrs. Robert Elliott
Mrs. J.T. Richardson, Sr.	Mrs. Annie Bobo Frazier
Thomas Dial	Mr. and Mrs. Skip Hubbard
Mrs. Fred Johnson	Palmore Hampton
Mrs. J.P. Dearing	Bush Parks
Mrs. Howard Parker	Andrew Williams
Mrs. Bud Chism	C.R. Gordon
Floyd Pearce	Leroy Renfro
Mrs. Simon Feldman	Garland McDonald
Mr. and Mrs. Balas Thompson	Jack Green
Rev. L.F. Piercey	Bruce Crow
Jack Phillips	Albert Seetoo
Mrs. Joe Patterson	Lee Sing
Miss Betty Joe Patterson	Mrs. Martha Phillips
Mrs. Louise Thomas	Mrs. P.M. Dearing
Mrs. G.L. Franks	John Simmons
Mrs. Claudia Jones	Mrs. Bob English
Mr. and Mrs. H.L. Williamson	
Mrs. Frances Smith	
Mrs. Lewis Franks	
Mrs. S.B. Shaifer	
Mr. and Mrs. June E. Davidson	
Mr. and Mrs. D.A. McNeill	

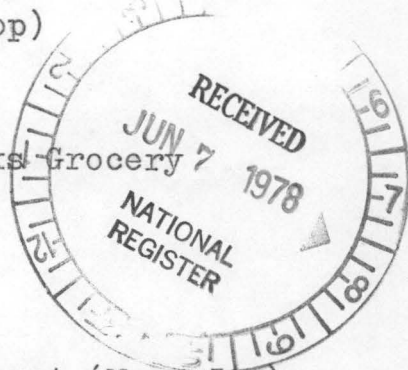
List of present property owners

2/78

Holly Grove, Arkansas

South Main Street (New Addition)

LOT NUMBER	OWNER'S NAME	NAME OF BUSINESS
Lot un-numbered	R. Abramson Company	and H Equipment Company
Lot 19 west $\frac{1}{2}$	Jack Phillips	used as warehouse
Lot 19 east $\frac{1}{2}$	Holly Grove Farm Store	(farmer's co-op)
Lot 20	Holly Grove Farm Store	
Lot 21	R. Abramson Co.	used as warehouse
Lot 22 west $\frac{1}{2}$	R. Abramson Co.	used as warehouse
Lot 22 east $\frac{1}{2}$	Mrs. G.L. "Bruce" Franks	G.L. Franks Grocery
Lot 23	R. Abramson Co.	R. Abramson Co.
Lot 24	Buck Wong	Wong's Grocery



North Main Street (Original town)

Lot 19--west $\frac{1}{2}$ --Mrs. Louise Thomas, H.C. Casey, Margaret (Mrs. Joe) Taylor, Ruth (Mrs. J.P.) Dearing--empty lot

Lot 19--east $\frac{1}{2}$ --Mrs. Jim Matthews, Mrs. John Rollow, Mrs. J.B. Terry--empty lot

Lot 20--west $\frac{1}{2}$ --Lee Sing--Lee Grocery

Lot 20--east $\frac{1}{2}$ --Billy F. Brooks--Brooks Drug Company

Lot 21--west $\frac{1}{2}$ --Margaret (Mrs. B.F. Brooks)--The Holly Tree

Lot 21--east $\frac{1}{2}$ --Bank of Holly Grove

Lot 22--west $\frac{1}{2}$ --Bank of Holly Grove

Lot 22--east $\frac{1}{2}$ --Fred Terry Johnson--Johnson Mercantile

Lot 23--west $\frac{1}{2}$ --Fred Terry Johnson--Johnson Mercantile

Lot 23--east $\frac{1}{2}$ --Hinton L. Williamson--Williamson Grocery

Lot 24--west $\frac{1}{2}$ --United Telephone Company--lot vacant

Lot 24--east $\frac{1}{2}$ --Herman Manes--Harrod's Laundromat

Depot--owned by the Holly Grove Depot and Development Corporation--
name--"The Bent Rail" (restaurant)

North Main Street (original town) east of Smith Street (Highway 17)

Lot 25--O.W. McCastlain--Washeteria, McCastlain Liquor Store, McCastlain office (storeroom), empty office

Lot 26--O.W. McCastlain--Chism Barber Shop, Pursell and Culver Cotton Co.

Lots 27, 28, 29, and 30--O.W. McCastlain--empty lots w/grain bins, etc.

Lots 71 and 72--R. Abramson Co., Mrs. Simon Feldman--King Motor Company
(original town)

Lots 1 and 18, facing east on Pine Street

Beginning at the south end and going north. . .

Business #1--owners Lee Sing and Albert Seetoo--Senior citizens center

Business #2--owner Rev. L.F. Piercey--second hand store

Business #3--owner Holly Grove Boys' Club--Holly Grove Boys' Club

Business #4--owner James Crossland--Albert Seetoo Grocery

Business #5--owner L.F. Piercey--used as a warehouse by Rev. Piercey

FEB 2 1979

TELEPHONE REPORT

OFFICE OF ARCHEOLOGY AND HISTORIC PRESERVATION

PROJECT:

TO/FROM: *Landra*

DATE: *11-17*

ADDRESS:

PHONE:

STAFF MEMBER:

Sheffy

DIVISION:

REPORT:

- all buildings on sketch map (?) - there are no other bridges in area
- UTM's - I read corrected
- 10 - she will double check
- new complete sketch map - she has ^o can send

map sent 11-22-78

TELEPHONE REPORT

OFFICE OF ARCHEOLOGY AND HISTORIC PRESERVATION

PROJECT:

Nelly Lane

TO/FROM:

Sandra

Smith

DATE:

1-16-79

ADDRESS:

PHONE:

STAFF MEMBER:

Shay

DIVISION:

REPORT:

*I asked for scale on map - so
it can be precisely followed. sketch
He will call back.*

HOLD UNTIL MONDAY, JANUARY 22

Waiting for State to supply scale on sketch map.

Called state again Jan. 18 - and they said would not be ready until Monday.

Marcella,

We are sending a
new map of Holly
Grove with scale
Also attached is a
verbal boundary
description.

Sandy

and
1-30-79 shp

Verbal Boundary: Holly Grove Historic District; Monroe County, Arkansas

Front Street on the south, Pine Street on the west, Second Street on the
north and Spruce Street on the east

ENTRIES IN THE NATIONAL REGISTER

STATE ARKANSAS

Date Entered FEB 2 1979

Name

Location

Monticello North Main Street Historic District

Monticello
Drew County

Holly Grove Historic District

Holly Grove
Monroe County

Also Notified

Honorable Dale Bumpers
Honorable David Pryor
Honorable Beryl F. Anthony, Jr.
Honorable Bill Alexander

State Historic Preservation Officer
Ms. Joan Baldrige
Arkansas Historic Preservation Program
Suite 500, Continental Building
Markham and Main Streets
Little Rock, Arkansas 72201

NR Byers/bjr 2/12/79

For further information, please call the National Register at (202)343-6401.

NATIONAL REGISTER DATA SHEET

① NAME as it appears on federal register: Holly Grove Historic District
 ② OTHER NAMES:
 ③ date of entry: FEB 2 1979
 ④ county code: 95

⑤ LOCATION street & number: Main and Pine Sts.
 city / town: Holly Grove
 vicinity of:
 state: AR
 county: Monroe
 ⑥ NPS REGION: SW

⑦ OWNER ☐ PRIVATE ☐ STATE ☐ MUNICIPAL ☐ COUNTY ☒ MULTIPLE ☐ FEDERAL (agency name):
 ⑧ ADMINISTRATOR:

⑨ EXISTING SURVEYS ☐ HABS ☐ HAER ☐ NHL ⑩ FUNDED? ☐ YES ☐ NO ⑪ CONGRESS. DISTRICT 1st ⑫ SOURCE of NOMINATION ☒ STATE ☐ FEDERAL
 if state who prepared form?

⑬ WITHIN NATIONAL REGISTER HISTORIC DISTRICT? ☐ YES, NAME ☐ NO ⑭ WITHIN NATIONAL HISTORIC LANDMARK? ☐ YES, NAME ☐ NO ⑮ AGREED ☐ LOCAL ☐ PRIVATE ORGANIZATION

⑯ CONDITION ☐ deteriorated ☐ altered ☐ original site
☐ excellent ☐ ruins ☐ unaltered ☐ moved
☐ good ☐ unexposed ☐ reconstructed ☐ unknown
☐ fair ☐ unexcavated ☐ excavated
 ⑰ features: ☐ SUBSTANTIALLY INTACT-1 ☐ SUBSTANTIALLY INTACT-2 ☐ SUBSTANTIALLY INTACT-3
☐ NOT INTACT-0 ☐ NOT INTACT-0 ☐ NOT INTACT-0
☐ UNKNOWN-4 ☐ UNKNOWN-5 ☐ UNKNOWN-6
☐ NOT APPLICABLE-7 ☐ NOT APPLICABLE-8 ☐ NOT APPLICABLE-9

⑱ ACCESS ☐ YES-Restricted ☐ YES-Unrestricted ☐ No Access ☐ Unknown ⑲ ADAPTIVE USE ☐ YES ☐ NO ⑳ SAVED? ☐ YES ㉑ IS PROPERTY A HISTORIC DISTRICT? ☐ yes ☐ no

㉒ AREAS OF SIGNIFICANCE:
☐ ARCHEOLOGY-prehistoric-2 ☐ COMMERCE-6 ☐ ENGINEERING-11 ☐ LANDSCAPE ARCH.-15 ☐ POLITICS/GOVT.-21 ☐ RECREATION-28
☐ ARCHEOLOGY-historic-1 ☐ COMMUNICATIONS-7 ☐ ENTERTAINMENT-26 ☐ LAW-16 ☐ RELIGION-22 ☐ SETTLEMENT-29
☐ AGRICULTURE-3 ☐ CONSERVATION-8 ☐ EXPLORATION-12 ☐ LITERATURE-17 ☐ SCIENCE-23 ☐ URBAN PLANNING-31
☐ ARCHITECTURE-4 ☐ ECONOMICS-9 ☐ HEALTH-27 ☐ MILITARY-18 ☐ SOCIAL/HUMANITARIAN-24 ☐ OTHER (SPECIFY)
☐ ART-5 ☐ EDUCATION-10 ☐ INDUSTRY-13 ☐ MUSIC-19 ☐ SOCIAL/CULTURAL-30
☐ INVENTION-14 ☐ PHILOSOPHY-20 ☐ TRANSPORTATION-25
 ㉓ CLAIMS: explain
 'first' ☐
 'oldest' ☐
 'only' ☐

㉔ functions WHEN HISTORICALLY SIGNIFICANT:
 CURRENTLY:
 ㉕ dates of initial construction:
 major alterations:
 historic events:
 ㉖ ETHNIC GROUP ASSOCIATION

㉗ architectural style(s): ㉘ architect: ㉙ master builder: ㉚ engineer:

㉛ landscape architect / garden designer: ㉜ interior decorator: ㉝ artist: ㉞ artisan: ㉟ builder/contractor:

㊱ NAMES give role & date
 PERSONAL:
 EVENTS:
 INSTITUTIONAL:

㊲ NATIONAL REGISTER WRITE-UP