

1592

RECEIVED 413

RECEIVED 413

United States Department of the Interior  
National Park Service

National Register of Historic Places  
Registration Form

INTERAGENCY RESOURCES DIVISION

MAY 4 1995

DEC 22 1994

FEB 8 1995

This form is for use in nominating or requesting determinations for individual properties and districts. See instructions in How to Complete the National Register of Historic Places Registration Form (National Register Bulletin 16A). Complete each item in the appropriate box or by entering the information requested. If any item does not apply to the property being documented, enter "N/A" for "not applicable." For functions, architectural classification, materials, and areas of significance, enter only categories and subcategories from the instructions. Place additional entries and narrative items on continuation sheets (NPS Form 10-900a). Use a typewriter, word processor, or computer, to complete all items.

1. Name of Property

historic name Colburn School

other names/site number \_\_\_\_\_

2. Location

street & number 136 Lawrence Street

N/A not for publication

city or town Lowell

N/A vicinity

state Massachusetts code MA county Middlesex code 017 zip code 01852

3. State/Federal Agency Certification

As the designated authority under the National Historic Preservation Act of 1986, as amended, I hereby certify that this  nomination  request for determination of eligibility meets the documentation standards for registering properties in the National Register of Historic Places and meets the procedural and professional requirements set forth in 36 CFR Part 60. In my opinion, the property  meets  does not meet the National Register Criteria. I recommend that this property be considered significant  nationally  statewide  locally. ( See continuation sheet for additional comments.)

Judith B. McDonough

24 APRIL 1995

Signature of certifying official/Title Judith B. McDonough, Executive Director  
Massachusetts Historical Commission, State Historic Preservation Officer

Date

State or Federal agency and bureau

In my opinion, the property  meets  does not meet the National Register criteria. ( See continuation sheet for additional Comments.)

Signature of certifying official/Title

Date

State or Federal agency and bureau

4. National Park Service Certification

I, hereby certify that this property is:

entered in the National Register

See continuation sheet.

determined eligible for the National Register

See continuation sheet.

determined not eligible for the National Register

removed from the National Register

other (explain): \_\_\_\_\_

for Signature of Keeper

Guy M. Lapsley

Entered in the \_\_\_\_\_ Date of Action  
National Register 5/19/95

Colburn School

Name of Property

Middlesex County, MA

County and State

Register of  
Placed

**5. Classification**

**Ownership of Property**

(Check as many boxes as apply)

- private
- public-local
- public-State
- public-Federal

**Category of Property**

(Check only one box)

- building(s)
- district
- site
- structure
- object

**Number of Resources within Property**

(Do not include previously listed resources in the count.)

Contributing \_\_\_\_\_ Noncontributing \_\_\_\_\_

\_\_\_\_\_ buildings

\_\_\_\_\_ sites

\_\_\_\_\_ structures

\_\_\_\_\_ objects

\_\_\_\_\_ 1 \_\_\_\_\_ 0 Total

**Name of related multiple property listing**

(Enter "N/A" if property is not part of a multiple property listing.)

N/A

**Number of contributing resources previously listed in the National Register**

0

**6. Function or Use**

**Historic Functions**

(Enter categories from instructions)

EDUCATION: school

**Current Functions**

(Enter categories from instructions)

VACANT: not in use

**7. Description**

**Architectural Classification**

(Enter categories from instructions)

MID-19TH CENTURY: Greek Revival,

**Materials**

(Enter categories from instructions)

foundation granite

walls brick

roof asphalt

other granite trim

**Narrative Description**

(Describe the historic and current condition of the property on one or more continuation sheets.)

FEB 8 1995

8. Statement of Significance

Applicable National Register Criteria

(Mark "x" in one or more boxes for the criteria qualifying the property for National Register listing.)

- X A Property is associated with events that have made a significant contribution to the broad patterns of our history.
B Property is associated with the lives of persons significant in our past.
X C Property embodies the distinctive characteristics of a type, period, or method of construction or represents the work of a master, or possesses high artistic values, or represents a significant and distinguishable entity whose components lack individual distinction.
D Property has yielded, or is likely to yield, information important in prehistory or history.

Criteria Considerations

(Mark "x" in all the boxes that apply.)

Property is:

- A owned by religious institution or used for religious purposes.
B removed from its original location.
C a birthplace or grave.
D a cemetery.
E a reconstructed building, object, or structure.
F a commendorative property.
G less than 50 years of age or achieved significance within the past 50 years.

Narrative Statement of Significance

(Explain the significance of the property on one or more continuation sheets.)

9. Major Bibliographical References

(Cite the books, articles, and other sources used in preparing this form on one or more continuation sheets.)

Previous documentation on file (NPS):

- preliminary determination of individual listing (36 CFR 67) has been requested
previously listed in the National Register
previously determined eligible by the National Register
designated a National Historic Landmark
recorded by Historic American Buildings Survey #
recorded by Historic American Engineering Record #

Areas of Significance

(Enter categories from instructions)

ARCHITECTURE

EDUCATION

Period of Significance

1848 - 1920

Significant Dates

1863: interior renovations

Significant Person

(Complete if Criterion B is marked above)

N/A

Cultural Affiliation

N/A

Architect/Builder

Jacob Graves

Primary location of additional data:

- State Historic Preservation Office
Other State agency
Federal agency
X Local government
University
Other

Name of repository:

Lowell Historic Board

Colburn School  
Name of Property

Middlesex County, MA  
County and State

National Register of  
Historic Places

FEB 8 1995

## 10. Geographical Data

Acreage of Property less than 1 acre (.4 acre)

### UTM References

(Place additional UTM references on a continuation sheet)

1. 1 9	3 1 1 0 6 0	4 7 2 3 1 6 0	3.		
Zone	Easting	Northing	Zone	Easting	Northing
2.			4.		
Zone	Easting	Northing	Zone	Easting	Northing

     See continuation sheet

### Verbal Boundary Description

(Describe the boundaries of the property on a continuation sheet.)

### Boundary Justification

(Explain why the boundaries were selected on a continuation sheet.)

## 11. Form Prepared By

Margo B. Webber, Preservation Consultant for the Lowell Historic Board  
name/title and Betsy Friedberg, National Register Director, MHC

organization Massachusetts Historical Commission date December 1994

street & number 80 Boylston Street telephone (617) 727-8470

city or town Boston state MA zip code 02116

### Additional Documentation

Submit the following items with the completed form:

#### Continuation Sheets

#### Maps

A **USGS map** (7.5 or 15 minute series) indicating the property's location.

A **sketch map** for historic districts and properties having large acreage or numerous resources.

#### Photographs

Representative **black and white photographs** of the property.

**Additional items** (Check with the SHPO or FPO for any additional items)

### Property Owner

(Complete this item at the request of the SHPO or FPO.)

name City of Lowell

street & number City Hall, 375 Merrimack St. telephone 508-970-4278

city or town Lowell state MA zip code 01852

**Paperwork Reduction Act Statement:** This information is being collected for applications to the National Register of Historic Places to nominate properties for listing or determine eligibility for listing, to list properties, and to amend existing listings. Response to this request is required to obtain a benefit in accordance with the National Historic Preservation Act, as amended (16 U.S.C. 470 et seq.).

**Estimated Burden Statement:** Public reporting burden for this form is estimated to average 18.1 hours per response including the time for reviewing instructions, gathering and maintaining data, and completing and reviewing the form. Direct comments regarding this burden estimate or any aspect of this form to the Chief, Administrative Services Division, National Park Service, P.O. Box 37127, Washington, DC 20013-7127; and the Office of Management and Budget, Paperwork Reductions Project (1024-0018), Washington, DC 20503.

United States Department of the Interior  
National Park Service

# National Register of Historic Places Continuation Sheet

RECEIVED 413

INTERAGENCY RESOURCES DIVISION  
NATIONAL PARK SERVICE

Section number 7 Page 1

RECEIVED 413

DMR Approval No. 1024-0018

DEC 22 1994

INTERAGENCY RESOURCES DIVISION  
NATIONAL PARK SERVICE

Colburn School  
Lowell, (Middlesex County)  
Massachusetts

FEB 8 1995

## 7. DESCRIPTION

The Colburn School is a modestly scaled, 2-story brick schoolhouse built in 1848 in the Greek Revival style. Its gabled end faces west towards Lawrence Street and is situated close to the street while the building itself spans the full depth of the site. The building is flanked by open, paved lots which set it apart from the densely built residential neighborhood in which it is situated. The design features a prominent gable with modillioned cornices in the end elevation and regularly-spaced windows with straight granite lintels and sills on all elevations. The north and south entrance bays have been altered with the addition of late-19th century pedimented hoods, but the original granite lintels are intact beneath the hoods. A fire escape has been added along the street elevation, and the vacant building needs considerable exterior repairs. Still, it largely retains its historic integrity of location, design, setting, materials, workmanship and feeling, and its association with the development of Lowell's public school system in the mid-19th century.

The school is situated within a densely settled neighborhood of 19th century workers' housing, both single and multi-family, which extends all along Lawrence Street and about two blocks to the west up a fairly steep slope. Directly north of the school parcel is a paved lot/playground. To its south is a swath of green space with power transmitters and overhead utility lines. Both lots were historically occupied by frame houses which created a stronger neighborhood context for the school than it presently has.

The building's site consists of a .4-acre parcel on the east side of Lawrence Street. The front of the site is level but about two feet lower than street grade. A low stone wall defines the front edge of the lot. The building spans the entire depth of the site, which slopes downward until leveling out at the building's east end and meeting a high brick wall at the edge of the Concord River, the site's eastern boundary. The building's north and south elevations are its main facades, facing out onto sloped, paved schoolyards. The schoolyards are edged by stone walls to the north and west and by a brick wall to the south. Above these walls, chain-link fences have been added, replacing the wood picket fence which historically fronted along the street with several large trees behind it.

The building's massing consists of a single rectangular block with a ridge roof and a finely-detailed gable end facing the street. At the roof's peak are four large metal ventilators and a slim brick chimney. The exterior is entirely of red brick, with pressed brick employed on the west end elevation and the end bays of the north and south elevations, and common brick used elsewhere.

The building's west elevation is four bays wide and contains the building's dominant design feature, the pedimented gable end. The gable's eaves and cornice are trimmed by large, square, cast-concrete modillion blocks which frame a series of inset brick triangles created by stepping the brick facade slightly. An oculus, now boarded, is centered in the gable. The large, evenly-spaced windows of the first and second stories have straight granite sills and lintels. The lintels are set into a double band of

(continued)

United States Department of the Interior  
National Park Service

National Register of  
Historic Places

## National Register of Historic Places Continuation Sheet

Section number 7 Page 2

Colburn School  
Lowell, (Middlesex County)  
Massachusetts

raised brick which reads as a header course and frieze and extends all around the building. The window openings have paired one-over-one windows in each bay, except in the two upper center bays which have been converted to narrow wood doors surrounded by wooden infill. A metal fire balcony and stair also have been added in the two center bays.

The north and south elevations were designed as identical facades and are still nearly so. Each elevation is six bays long, with a tall recessed rectangular panel at each end and east of the fourth bay which contains the entrance. At the cornice is a broad frieze of corbelled brick, matching the end elevation, as do the granite-trimmed windows with their paired one-over-one sash, all largely intact. The south elevation's entry bay has been altered with a Victorian doorhood with Stick-like brackets. Beneath it is the original wide granite lintel. The doorway has been infilled with an unsympathetic door and panel arrangement. The north entrance has an equally unsympathetic door and panel infill and a Victorian era pediment supported by heavily carved brackets. The south facade also has a 1/2-story projecting enclosure directly east of the entrance bay, apparently a stair enclosure for the basement stair.

The exterior of the Colburn School largely retains its historic design integrity. Altered window openings and an added west fire stair, altered entrance bays and Victorian hoods installed over their original granite lintels are the full extent of modifications. The building has suffered from inadequate maintenance as well. Yet these minor items do not significantly detract from the overall quality of this fine Greek Revival design.

The building interior consists of a central north/south stairhall with two classrooms extending east and two extending west, the same plan being used for both stories. The stairhall contains two dog-leg stairs with a shorter upper run. This plan and trim date from 1863 when a graded grammar system was instituted and are largely intact.

### Archaeological Description

While no prehistoric sites are currently recorded in the school property, sites may be present. Six prehistoric sites are recorded in the general area (within one mile). The property also exhibits locational characteristics including good drainage, a level to moderately sloping land surface and close proximity to the Concord River, which are favorable for prehistoric site location. Historic-period land use and impacts related to the school construction have been extensive on the small lot (.4 acre); however, leveling of the site prior to school construction reportedly included deep fill which may have served to protect archaeological deposits. Because of the reported filling on the property a moderate to high potential exists for the recovery of significant prehistoric resources.

(continued)

United States Department of the Interior  
National Park Service

National Register of  
Historic Places

FEB 8 1995

National Register of Historic Places  
Continuation Sheet

Section number 7, 8 Page 3, 1

Colburn School  
Lowell, (Middlesex County)  
Massachusetts

A moderate to high potential also exists for the recovery of historic archaeological remains on the property. Resources which pre-date school construction have not been identified for the school property. Structural remains may be present for an outhouse possibly located in the area near the school now covered with asphalt paving. Sheet refuse may also be present in the area around the school. It is unknown, at present, to what extent asphalt paving may have affected the historic resources described above.

(end)

8. STATEMENT OF SIGNIFICANCE

The Colburn School meets Criteria A and C of the National Register of Historic Places, with local significance. Under Criterion A, the Colburn School is significant for its role in the mid-19th century development of Lowell's school system, a system that was forced to grow and change dramatically to accommodate the enormous population increases associated with the city's burgeoning textile industry. The school incorporated the most forward-thinking educational policies and teaching methods into its program during a time when there was much controversy in Lowell about what should be taught in the public schools and to whom. Under Criterion C, the property is a well-preserved example of a public building designed to the highest educational standards of the day and to be a handsome edifice appropriate to the Town's high regard for public education. The property is a fine example of the Greek Revival style still popular at mid-century in Lowell, a style well-suited to the plan of a school building. Its period of significance spans from 1848 when it opened through 1920, when Lowell's school population began to wane with the decline of the textile industry as a whole.

Criterion A

Prior to Lowell's incorporation as a town in 1826, it was part of East Chelmsford and as such had two district schools, each of which contained students of many different ages. This system had sufficed in the 18th century agrarian community when the number of school-aged children was relatively low. With the coming of industrialization in the 1820s, however, the influx of so many new residents challenged the ability of the district schools to adequately accomplish their objectives.

In 1824, the owners of the newly-established Merrimack Manufacturing Company started a school for their own operatives under the supervision of the Rev. Theodore Edson. Meanwhile, by 1826, the number of district schools had increased to six and the Town made its first annual appropriation of \$1,000. As the population grew, other schools also opened but the number of districts remained at six.

The first Lowell High School opened in 1831 with eight members in its first class. Following trends established in Boston and Newburyport, Rev. Edson recommended that the district system be replaced

(continued)

**United States Department of the Interior  
National Park Service**

**National Register of Historic Places  
Continuation Sheet**

Section number 8 Page 2

**Colburn School  
Lowell, (Middlesex County)  
Massachusetts**

by a graded system to eliminate the wide age span and diversity of curriculum within a single classroom.

Many antagonisms developed between the old settlers, the new operatives and the mill owners about how the schools should be run. Rev. Edson, considered to be among the most intelligent friends of education, was committed to replacing the district system with two large grammar schools. The corporation owners, led by Kirk Boott, vehemently opposed the plan and vowed not to support the schools any longer. Eventually Edson's plan prevailed by twelve votes and the North and South Grammar Schools were built, opening in 1833. Primary schools continued to be located in smaller schoolhouses throughout the community.

Three years later, in 1836, a School Committee of six members plus the mayor and aldermen was established to administer the schools, thereby lessening the ability of the corporate interests to influence educational policies. Among the School Committee's first members was Warren Colburn, a close friend of Rev. Edson and a distinguished educator in his own right.

During the next several decades, the school system underwent rapid expansion directly related to dramatic increases in population as the textile industry attracted more and more operatives to the area. (The population more than doubled from 17,633 in 1835 to 36,827 by 1860.) Additional schoolhouses were built, including the Franklin Grammar School in 1839, the Moody Grammar School and the Green School in 1841, the Mann Grammar School in 1844, the Colburn School in 1848 and the Varnum School in 1857. New schools were located within densely developed neighborhoods of workers' housing where the concentration of students was greatest. Lawrence Street, where the Colburn School is situated, was one such area.

Typically, the grammar schools were built with one room on each floor for use as a schoolroom for 198 scholars, and occasionally there were one or two separate smaller recitation rooms. Primary grades (1-3) were separated from the grammar grades (4-8) although they were frequently located within the same buildings. When the Colburn School opened as the city's ninth grammar school in 1848, it was an ungraded school. It housed the grammar school on its two upper floors and a primary classroom in the basement.

The opening of the Colburn School was marked with great local ceremony, including an address by the Rev. Edson. The address summarized and praised the progressiveness of Lowell's schools and credited much of their progress to the efforts of Warren Colburn, for whom the school was being named.

Warren Colburn had moved to Lowell in 1824 to become superintendent of the Merrimack Manufacturing Co. after proving himself a successful manager at the mills in Waltham. Born in Dedham in 1793, Colburn was an 1820 graduate of Harvard and had taught school and written several

(continued)

United States Department of the Interior  
National Park Service

National Register of Historic Places  
Continuation Sheet

Section number 8 Page 3

Colburn School  
Lowell, (Middlesex County)  
Massachusetts

school texts on arithmetic which greatly changed the way the subject was taught. His texts emphasized reasoning rather than rote learning. After moving to Lowell, he published additional texts, "Algebra" in 1828 and its "Sequel" in 1833. In 1830, he served on a special commission to establish a school for Irish operatives in "the Acre," but the school was never approved. As a School Committee member, lyceum lecturer and textbook author, Colburn was renowned for his efforts to build up a model public school system in Lowell. He died in 1833, before many of his goals were actually realized.

The population continued to grow following Lowell's incorporation as a city in 1854, and concerns for public education remained strong. Two free Evening Schools were instituted in 1857 as part of the public system, geared to the new immigrant population. By 1859, there were six evening schools and upwards of 500 pupils enrolled in them.

Economic decline in Lowell during the Civil War years caused a decrease in school attendance as up to 600 people emigrated from the area. A few schools were temporarily closed. A law was passed requiring children to attend a certain amount of school to be allowed to work in the mills: for those over age 12, at least one 11-week term within the prior year; and for those under 12, at least one 18-week term every year.

In 1863, the Colburn School was one of the City's last schools to be converted to a graded grammar school. Its interior plan was modified to create eight separate classrooms, four on each floor.

In all, by 1868, there were the one high school, eight grammar schools and 47 primaries within the city. The grammar schools, being the highest level of schooling that most students completed, underwent continual improvements in the 1870s and 1880s. In addition to becoming fully graded, the curriculum was expanded to include music and drawing as well as the "three R's" of reading, writing and arithmetic, English grammar and geography. New schools erected to further relieve overcrowding of the North and South Grammar Schools (now known as the Bartlett and Edson Schools, respectively) included the Highland School and the Butler School in 1882 and the Pawtucket School in 1884.

The School Committee also ran a Training School for teachers which insured that all teachers in the public schools would be of a high caliber. The Training School was housed in the Colburn School as well during the 1890s. Changing educational philosophy nationally led to the creation of junior high schools in Lowell, beginning in 1920. Junior highs grouped grades seven through nine together. While some grammar schools were converted to junior highs, others, including the Colburn School, were reorganized to become elementary schools. The Colburn School remained in continuous use as a school until 1992. It is presently vacant and used for storage.

(continued)

United States Department of the Interior  
National Park Service

National Register of  
Historic Places

# National Register of Historic Places Continuation Sheet

Section number 8 Page 4

Colburn School  
Lowell, (Middlesex County)  
Massachusetts

## Criterion C

The Colburn School was completed in 1848 and is a fine example of Greek Revival architecture, illustrating many characteristic features of the style. Its massing and fine detail reflect an era in which the City placed great emphasis on quality education. The design incorporated current teaching philosophy in terms of classroom size and interior layout.

A survey of Lowell's remaining 19th century schools identified this structure as one of three school buildings worthy of individual National Register listing. Most of the other resources have lost their integrity through incompatible alterations to original fabric and/or design features, whereas the Colburn School retains the greater part of its historic design integrity.

The building was erected at a cost of over \$12,000, a considerable sum for its day. It was designed by Jacob Graves, a principal of two Lowell grammar schools between 1844 and 1847. It is the only known building which he designed and is similar to the Lowell High School design of 1831, designed by Boston architect Richard Bond. In addition, books on school architecture with detailed descriptions of specifications and appurtenances were available to the layman in the 1840s, in particular Henry Bernard's School Architecture, which included an elevation and plan of the Lowell High School, also designed in the Greek Revival style.

The Colburn School's design employs the standard Greek Revival element of a broad gable facing the street, supplemented by a coherent pattern of granite lintels and sills, modillioned cornices and banded brick frieze coursing. Recessed vertical panels at the corners of the two facades appear to be a simplified variation of the Greek Revival pilaster motif. The building's brick exterior, strong massing, and close proximity to the street and to its abutters suggest that the architect sought to design an imposing structure, an intent that was successfully achieved.

The building's interior layout was considered the most effective way of teaching when it was built. Each floor contained a single large classroom, with an abundance of tall windows for light and ventilation. The building was heated by a hot air furnace fired by wood and coal. It most likely had indoor privies. The present layout was instituted in 1863 when the school adopted a graded system. The one large classroom on each floor was divided into four classrooms, each with separate desks for 54 students.

The site of the Colburn School was leveled at the time of construction in 1848, this being the first building on the site. A dry-laid retaining wall was installed along its outer edges. In recent years, the schoolyard has been covered in asphalt.

(continued)

United States Department of the Interior  
National Park ServiceNational Register of  
Historic Places

FEB 8 1995

National Register of Historic Places  
Continuation SheetSection number 8, 9 Page 4, 1Colburn School  
Lowell, (Middlesex County)  
MassachusettsArchaeological Significance

Since patterns of prehistoric occupation in Lowell are poorly understood, any surviving sites would be significant. Early industrialization and urbanization in Lowell along fall lines of the Merrimack and Concord Rivers undoubtedly affected numerous prehistoric sites in those areas. Prehistoric resources on the Colburn School property can contribute settlement and subsistence information for sites along primary tributaries of the Merrimack River. Sites in this area can also attest to the relative importance of locations at the confluence of major riverine areas and their tributaries. Such locales have been identified as regionally important settlement locations particularly during later Woodland periods. Prehistoric sites in this area may also contain information which can contribute to a greater understanding of regional trade patterns, particularly between interior and coastal locales. The Merrimack River represents a recognized regionally important transportation corridor for both the prehistoric and historic periods.

Historic and archaeological remains described above have the potential for providing detailed information on students and their education in a worker's neighborhood from the mid-nineteenth through early 20th centuries. Analysis of sheet refuse patterns which may underly paving around the school can contribute economic and cultural information on students at the school and activities which occurred there. Detailed analysis of structural remains from the school's outhouse and its fill can help further reconstruct the layout of the school's components and possibly provide stratigraphic evidence of social changes in students who attended the school and changes in educational methods or patterns at the school. Outhouse fills can contain artifacts and refuse which are reflective of the facility where they are located.

(end)

**9. MAJOR BIBLIOGRAPHICAL REFERENCES**

Annual Report of the School Committee, 1839, 1840, 1841, 1847, 1848.

Bernard, Henry, School Architecture or Contributions to the Improvement of School Houses in the United States, Third Edition. New York: A.S. Barnes & Co. 1849.

Coburn, Frederick W., The History of Lowell and Its People, NY: Lewis Historical Publishing Co. 1920, pp. 188-194, 368-370.

Contributions of Old Residents' Historical Association of Lowell, Vol. IV, pp. 107, 265, 306-307. 1891.

(continued)

United States Department of the Interior  
National Park Service

National Register of  
Historic Places

FEB 8 1995

National Register of Historic Places  
Continuation Sheet

Section number 9, 10 Page 2, 1

Colburn School  
Lowell, (Middlesex County)  
Massachusetts

Edson, Rev. Theodore , D.D., Address Delivered at the Opening of the Colburn Grammar School in Lowell, Dec. 13, 1848. Lowell: James Atkinson, City Printer, 1849.

Lowell Cultural Resources Inventory, Colburn School, 1979.

Lowell of Today, *Lowell Daily Citizen*, pp. 86. 1893.

Lowell, A City of Spindles, pp. 30, 56. 1900.

"Report of the Superintendent," Lowell School Department Annual Reports, 1894, pp. 107-108.

(end)

## 10. GEOGRAPHICAL DATA

### Boundary Description:

Beginning at the southwest corner of the parcel at #136 Lawrence Street known as the Colburn School, the boundary proceeds northward along the east side of Lawrence Street for a distance of 132 feet. It then turns eastward along the northerly edge of said parcel for a distance of 133.83 feet to the western edge of the Concord River, where it turns south along the easterly edge of said parcel for a distance of 132.97 feet. It then turns west along the southerly edge of said parcel until reaching the east side of Lawrence Street and the point of beginning. See attach City of Lowell assessor's map #180.

### Boundary Justification:

This boundary has been selected to include just the .4-acre parcel on which the Colburn School is situated, the site historically and presently associated with the school. Lawrence Street forms the west boundary between the school parcel and the surrounding residential neighborhood of 19th-century mill workers' housing.

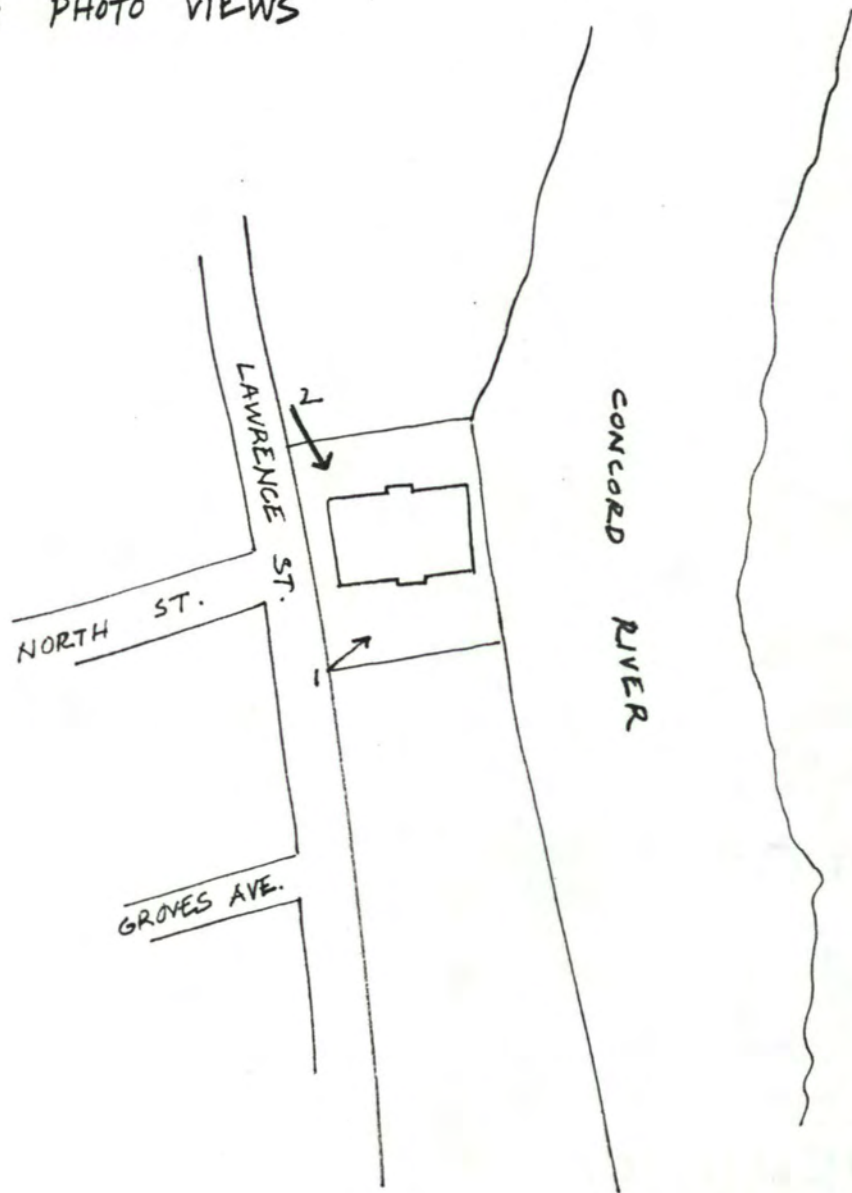
To the south, two narrow open lots with transmission equipment and overhead transmission lines form a buffer zone between the school and the residential properties along Lawrence Street. North of the parcel are two open lots also owned by the City and formerly used as playground and parking when the school was in use. These parcels all formerly had houses on them and thus were not historically associated with the school during its period of significance.

To the east of the school parcel, the Concord River forms a natural boundary of the property.

(end)

FEB 8 1995

COLBURN SCHOOL  
SKETCH MAP WITH PHOTO VIEWS



(NOT TO SCALE)

BF  
TA

UNITED STATES DEPARTMENT OF THE INTERIOR  
NATIONAL PARK SERVICE

NATIONAL REGISTER OF HISTORIC PLACES  
EVALUATION/RETURN SHEET



RECEIVED

FEB 27 1995

U.S. HIST. COMM.

REQUESTED ACTION: NOMINATION

PROPERTY NAME: Colburn School

MULTIPLE NAME:

STATE & COUNTY: MASSACHUSETTS, Middlesex

DATE RECEIVED: 12/22/94      DATE OF PENDING LIST: 1/04/95  
DATE OF 16TH DAY: 1/20/95      DATE OF 45TH DAY: 2/05/95  
DATE OF WEEKLY LIST:

REFERENCE NUMBER: 94001592

NOMINATOR: STATE

REASONS FOR REVIEW:

APPEAL: N    DATA PROBLEM: N    LANDSCAPE: N    LESS THAN 50 YEARS: N  
OTHER: N    PDIL: N    PERIOD: N    PROGRAM UNAPPROVED: N  
REQUEST: N    SAMPLE: N    SLR DRAFT: Y    NATIONAL: N

COMMENT WAIVER: N

ACCEPT     RETURN     REJECT    \_\_\_\_\_ DATE

ABSTRACT/SUMMARY COMMENTS:

*Nomination is not signed by SHPO*

*Please have the State Historic Preservation  
officer sign the nomination and check  
the appropriate boxes in section 3 of the form.*

RECOM./CRITERIA Return  
REVIEWER Patrick Andrews  
DISCIPLINE Historian  
DATE 2/2/95

DOCUMENTATION see attached comments Y/N see attached SLR Y/N

CLASSIFICATION

count  resource type

STATE/FEDERAL AGENCY CERTIFICATION

FUNCTION

historic  current

DESCRIPTION

architectural classification  
 materials  
 descriptive text

SIGNIFICANCE

Period Areas of Significance--Check and justify below

Specific dates Builder/Architect  
Statement of Significance (in one paragraph)

- summary paragraph
- completeness
- clarity
- applicable criteria
- justification of areas checked
- relating significance to the resource context
- relationship of integrity to significance
- justification of exception
- other

BIBLIOGRAPHY

GEOGRAPHICAL DATA

acreage  verbal boundary description  
 UTM's  boundary justification

ACCOMPANYING DOCUMENTATION/PRESENTATION

sketch maps  USGS maps  photographs  presentation

OTHER COMMENTS

Questions concerning this nomination may be directed to

Signed Patrick Andrews Phone \_\_\_\_\_ Date 2/2/95

UNITED STATES DEPARTMENT OF THE INTERIOR  
NATIONAL PARK SERVICE

NATIONAL REGISTER OF HISTORIC PLACES  
EVALUATION/RETURN SHEET

REQUESTED ACTION: RESUBMISSION

PROPERTY Colburn School  
NAME:

MULTIPLE  
NAME:

STATE & COUNTY: MASSACHUSETTS, Middlesex

DATE RECEIVED: 5/04/95 DATE OF PENDING LIST:  
DATE OF 16TH DAY: DATE OF 45TH DAY: 6/18/95  
DATE OF WEEKLY LIST:

REFERENCE NUMBER: 94001592

NOMINATOR: STATE

DETAILED EVALUATION: N

ACCEPT  RETURN  REJECT 5/19/95 Entered in the  
DATE National Register

ABSTRACT/SUMMARY COMMENTS:

RECOM./CRITERIA \_\_\_\_\_

REVIEWER \_\_\_\_\_

DISCIPLINE \_\_\_\_\_

TELEPHONE \_\_\_\_\_

DATE \_\_\_\_\_

DOCUMENTATION see attached comments Y/N see attached SLR Y/N



COLBURN SCHOOL  
136 LAWRENCE ST.  
LOWELL, MA  
MIDDLESEX CO.

PHOTO BY: MARGO WEBBER  
OCTOBER, 1992

NEG. AT: LOWELL HISTORIC BOARD  
JFK CIVIC CENTER  
LOWELL, MA 01852

LOOKING NE AT SOUTH ELEVATION

PHOTO 1 OF 2



COLBURN SCHOOL  
136 LAWRENCE ST.  
LOWELL, MA  
MIDDLESEX CO.

PHOTO BY: MARGO WEBBER  
OCTOBER, 1992

NEG. AT: LOWELL HISTORIC BOARD  
JFK CIVIC CENTER  
LOWELL, MA 01852

LOOKING SE AT NORTH AND WEST ELEVATIONS

PHOTO 2 OF 2



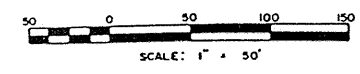
COLBURN SCHOOL  
 136 Lawrence Street  
 Lowell, MA  
 Assessor's Map #180



REVISIONS	
DATE	REV. BY

PROPERTY OWNERSHIP MAPS  
 CITY OF  
 LOWELL, MASSACHUSETTS  
 DATE: JAN. 1, 1982

SHEET INDEX		
160	179	200
161	180	201
162	181	202



PREPARED BY  
**HUNNICUTT & ASSOCIATES, INC.**  
 A DIVISION OF L. ROBERT KIMBALL & ASSOC.  
 ENGINEERS - APPRAISERS - CARTOGRAPHERS  
 ST. PETERSBURG, FLORIDA  
 TOPOGRAPHIC PLANS DATED 4-20-80  
 USED AS BASE FOR OWNERSHIP MAPPING

# Lowell

MASSACHUSETTS-  
NEW HAMPSHIRE  
1:25 000-scale metric  
topographic map



### 7.5 X 15 MINUTE QUADRANGLE SHOWING

- Contours and elevations in meters
- Highways, roads and other manmade structures
- Water features
- Woodland areas
- Geographic names



GEOLOGICAL SURVEY

1987

Produced by the United States Geological Survey in cooperation with Massachusetts Department of Public Works. Control by USGS, NOS/NOAA, and Commonwealth of Massachusetts agencies.

Compiled by photogrammetric methods from aerial photographs taken 1981. Field checked 1983. Map edited 1987. This area also covered by 7.5-minute 1:24,000-scale maps: Nashua South 1965 and Lowell 1966.

Projection and 1000-meter grid, zone 19 Universal Transverse Mercator 10,000-foot grid ticks based on Massachusetts coordinate system, mainland zone, and New Hampshire coordinate system 1927 North American Datum.

To place on the predicted North American Datum 1983, move the projection lines 6 meters south and 40 meters west as shown by dashed corner ticks. There may be private inholdings within the boundaries of the National or State reservations shown on this map.

CONTOUR INTERVAL 3 METERS  
NATIONAL GEODETIC VERTICAL DATUM OF 1929  
CONTROL ELEVATIONS SHOWN TO THE NEAREST 0.1 METER  
OTHER ELEVATIONS SHOWN TO THE NEAREST 0.5 METER

THIS MAP COMPLIES WITH NATIONAL MAP ACCURACY STANDARDS

CONVERSION TABLE		DECLINATION DIAGRAM		ADJOINING MAPS		
Meters	Feet	Magnetic Declination		1	2	3
1	3.2808	19° 28' MILES		4	5	6
2	6.5615	20° 15' MILES		7	8	
3	9.8423					
4	13.1230					
5	16.4038					
6	19.6845					
7	22.9653					
8	26.2460					
9	29.5268					
10	32.8075					

To convert meters to feet multiply by 3.2808  
To convert feet to meters multiply by 0.3048

UTM grid convergency (GN and 1983 magnetic) at center of map diagram is approximate

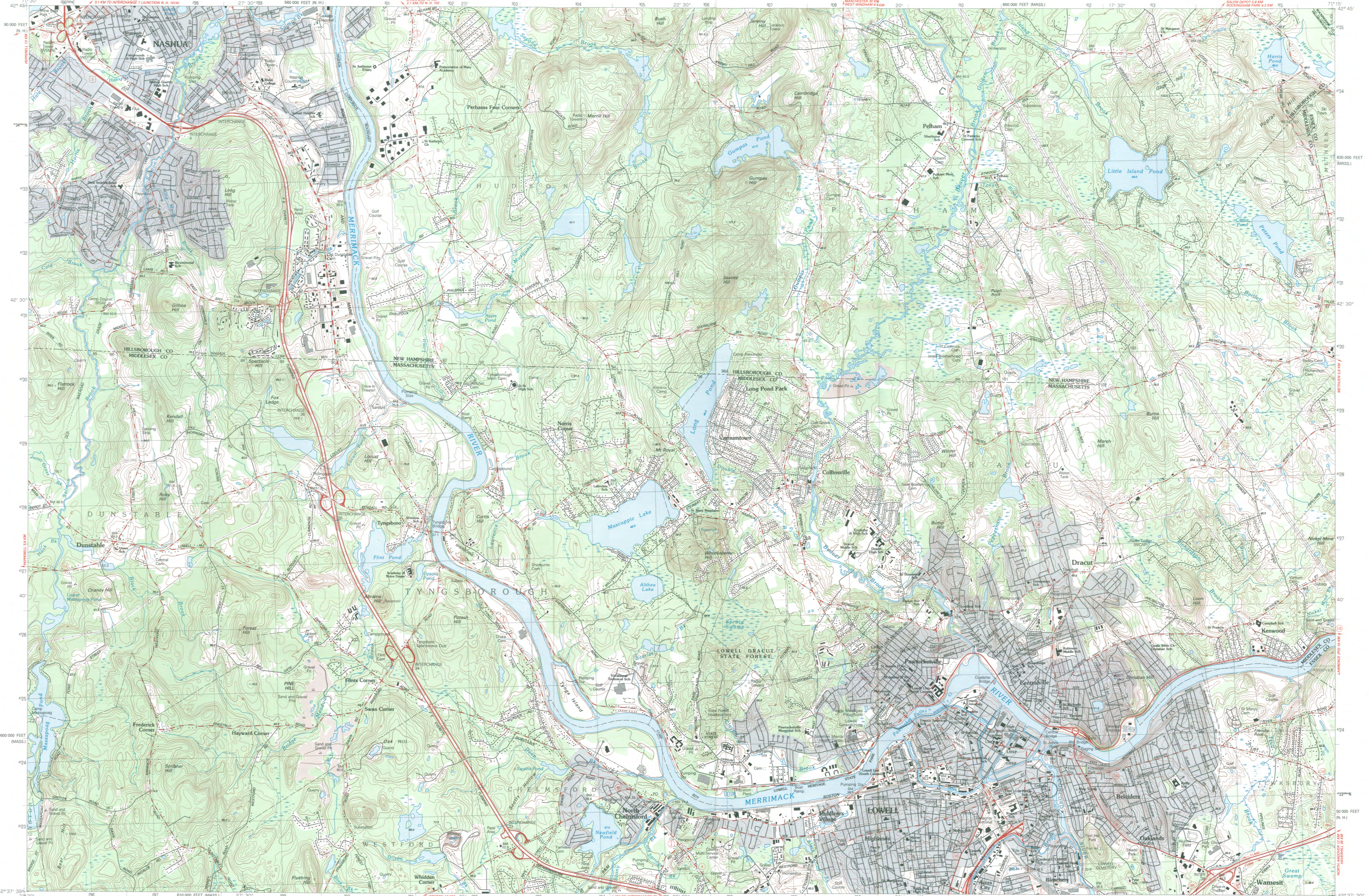
1	Millard
2	Nashua
3	Haverhill
4	Townsend
5	Lawrence
6	Amherst
7	Billerica
8	Reading

FOR SALE BY U.S. GEOLOGICAL SURVEY  
DENVER, COLORADO 80225, OR RESTON, VIRGINIA 22092

### Topographic Map Symbols

- Primary highway, hard surface
- Secondary highway, hard surface
- Light-duty road, hard or improved surface
- Unimproved road, trail
- Route marker: Interstate, U.S., State
- Railroad: standard gauge; narrow gauge
- Bridge: drawbridge
- Footbridge; overpass; underpass
- Bathup area: only selected landmarks shown
- House; barn; church; school; large structure
- Boundary: National, with monument; State; County; parish; Civil township, precinct, district; Incorporated city, village, town; National or State reservation; small park; Land grant with monument; found section corner; U.S. public lands survey; range, township, section; Range, township; section line: location approximate
- Dam: dam with lock
- Power transmission line, located tower
- Cemetery; grave
- Campground; picnic area; U.S. location monument
- Woodland: wet; well; spring; small park
- Mine shaft; prospect; edit or cave
- Control: horizontal station; vertical station; spot elevation
- Contours: index; intermediate; supplementary; depression
- Spot surface: spot; mine; level; sea
- Bathymetric contours: index; intermediate
- Perennial lakes and stream; intermittent lakes and stream
- Rapids, large and small; falls, large and small
- Swamp; marsh
- Submerged marsh; land subject to controlled inundation
- Woodland; scattered trees
- Sorb; mangrove
- Orchard; vineyard

A pamphlet describing topographic maps is available on request



SCALE 1:25 000  
1 CENTIMETER REPRESENTS 250 METERS  
CONTOUR INTERVAL 3 METERS

LOWELL, MASSACHUSETTS-NEW HAMPSHIRE  
136 LAWRENCE STREET  
LOWELL, MA 01850  
42071-F3-TM-025

1987



December 12, 1994

Carol Shull  
National Register of Historic Places  
Department of the Interior  
National Park Service  
P.O. Box 37127  
Washington, DC 20013-7127

Dear Ms. Shull: .

Enclosed please find the following nomination form:

Colburn School, 136 Lawrence Street, Lowell (Middlesex County),  
Massachusetts, 01852.

The nomination has been voted eligible by the State Review Board and has been signed by the State Historic Preservation Officer. Because the city of Lowell is a participant in the Certified Local Government program, the owners were notified of pending State Review Board consideration 60-120 days before the meeting and were afforded the opportunity to comment.

Sincerely,

Betsy Friedberg  
National Register Director  
Massachusetts Historical Commission

enclosure

cc: Mayor Richard Howe  
City of Lowell School Department  
Steve Stowell, Administrator, Lowell Historic Board  
Margo Webber, Preservation Consultant  
Anne O'Brien, Librarian, Pollard Memorial Library



**The Commonwealth of Massachusetts**  
William Francis Galvin, Secretary of the Commonwealth  
Massachusetts Historical Commission

April 24, 1995

Ms. Carol Shull  
National Register of Historic Places  
Department of the Interior  
National Park Service  
P. O. Box 37127  
Washington, D. C. 20013-7127



Dear Ms. Shull,

Enclosed please find the following nomination form:

Colburn School, 136 Lawrence Street, Lowell (Middlesex County),  
Massachusetts 01852

As noted in my letter to you of December 12, 1994, the nomination has been voted eligible by the State Review Board. Since the city of Lowell is a participant in the Certified Local Government program, the owners of the Colburn School were notified of pending State Review Board consideration 60-120 days before the meeting and were afforded the opportunity to comment.

**The nomination has now been signed by the State Historic Preservation Officer.**

Sincerely,

A handwritten signature in cursive script that reads "Betsy Friedberg".

Betsy Friedberg  
National Register Director  
Massachusetts Historical Commission

Enclosure