



Conservation Building
Cass Co., Mn
014393-21

Conservation Building

Cass Co., Mn

Photographer: Rolf Anderson

August 2002

Mn Historical Society, 345 Kellogg Blvd. W., St. Paul, Mn
55102

Looking SE

014393-21



Conservation Building
Cass Co., Mn
014391-18

Conservation Building

014391-18

Cass Co., MN

Photographer: Rolf Anderson

August 2002

MN Historical Society, 345 Kellogg Blvd. W., St. Paul, MN

Looking S

55102



Conservation Building
Cass Co., MN
014391-14

Conservation Building
Cass Co., MN

014391-14

Photographer: Rolf Anderson

August 2002

MN Historical Society, 345 Kellogg Blvd. W., St. Paul, MN
55102

Looking NE

Conservation Building
Cass Co., MN
014238-4



Conservation Building
Cass Co., MN

014238-4

Photographer: Rolf Anderson

August 2002

MN Historical Society, 345 Kellogg Blvd. W., St. Paul, MN 55102

Looking NE



Conservation Building

Cass Co., MN

014393-13

Conservation Building
Cass Co., Mn

014393-13

Photographer: Rolf Anderson

August 2002

Mn Historical Society, 345 Kellogg Blvd. W., St. Paul, Mn 55102

Looking W



Conservation Building

Cass Co., MN

014393-24

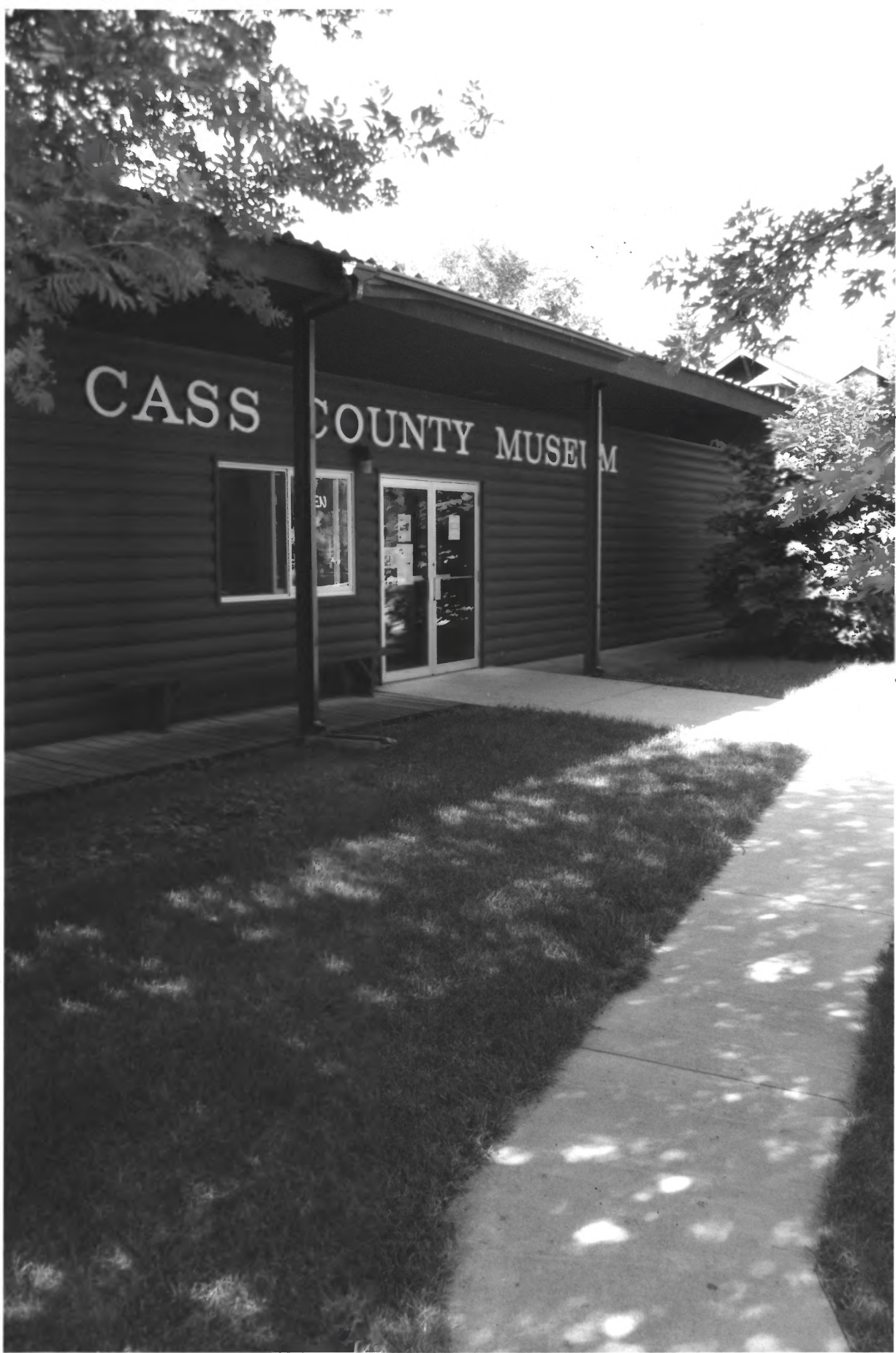
Conservation Building
Cass Co., MN

014393-24

Photographer: ROLF Anderson
August 2002

Mn Historical Society, 345 Kellogg Blvd. W., St. Paul, Mn 55102

Looking NE



Cass County Historical Museum (Non-Contributing), EAST OF CONSERVATION Building
Cass Co., MN
014393-11

Cass County Historical Society Museum, 014393-11
East of Conservation Building
Cass Co., MN

Photographer: Rolf Anderson

August 2002

MN Historical Society, 345 Kellogg Blvd. W., St. Paul, MN
55102

Looking SW



DeLury Monument (non-Contributing), WEST OF CONSERVATION BUILDING
CASS CO., MN

014393-10

DeLury Monument (non-contributing), 014393-10
Cass Co., Mn WEST OF CONSERVATION BUILDING

Photographer: ROLF ANDERSON

August 2002

MN Historical Society, 345 Kellogg Blvd. W., St. Paul, Mn

55102

Looking S



Conservation Building, Rock Garden

Cass Co., Mn

014393-9

Conservation Building, Rock Garden
Cass Co., Mn

014393-9

Photographer: Rolf Anderson

August 2002

Mn Historical Society, 345 Kellogg Blvd. W., St. Paul, Mn 55102

Looking W



Conservation Building, Rock Garden
Cass Co., MN

014391-1

Conservation Building, Rock Garden

014391-1

Cass Co., MN

Photographer: ROLF Anderson

August 2002

MN Historical Society, 345 Kellogg Blvd. W., St. Paul, MN 55102

Looking S



Conservation Building Exhibits
Cass Co., Mn
014391-9

Conservation Building Exhibits

014391-9

Cass Co., MN

Photographer: Rolf Anderson

August 2002

MN Historical Society, 345 Kellogg Blvd. W., St Paul, MN

Looking SW

55102



4

Conservation Building Exhibits
Cass Co., MN
014238-9

Conservation Building Exhibits

014238-9

Cass Co., Mn

Photographer: Rolf Anderson

August 2002

Mn Historical Society, 345 Kellogg Blvd. W., St. Paul, Mn

55102

Looking NE



Conservation Building Exhibits
Cass Co., MN
014238-11

Conservation Building Exhibits

014238-11

Cass Co., MN

Photographer: Rolf Anderson

August 2002

MN Historical Society, 345 Kellogg Blvd. W., St. Paul, MN 55102

Looking NE



Conservation Building
Cass Co., Mn
014391-2

Conservation Building

014391-2

Rass Co., MN

Photographer: Rolf Anderson

August 2002

MN Historical Society, 345 Kellogg Blvd. W., St. Paul, MN
55102

Looking SW



Left-Statue of Justice, Middle-Huset School (both non-contributing)
Right- Conservation Building
Cass Co., MN
014393-12

Left-Statue of Justice (non-contributing) 014393-12

Middle-Huset School (non-contributing)

Right-Conservation Building

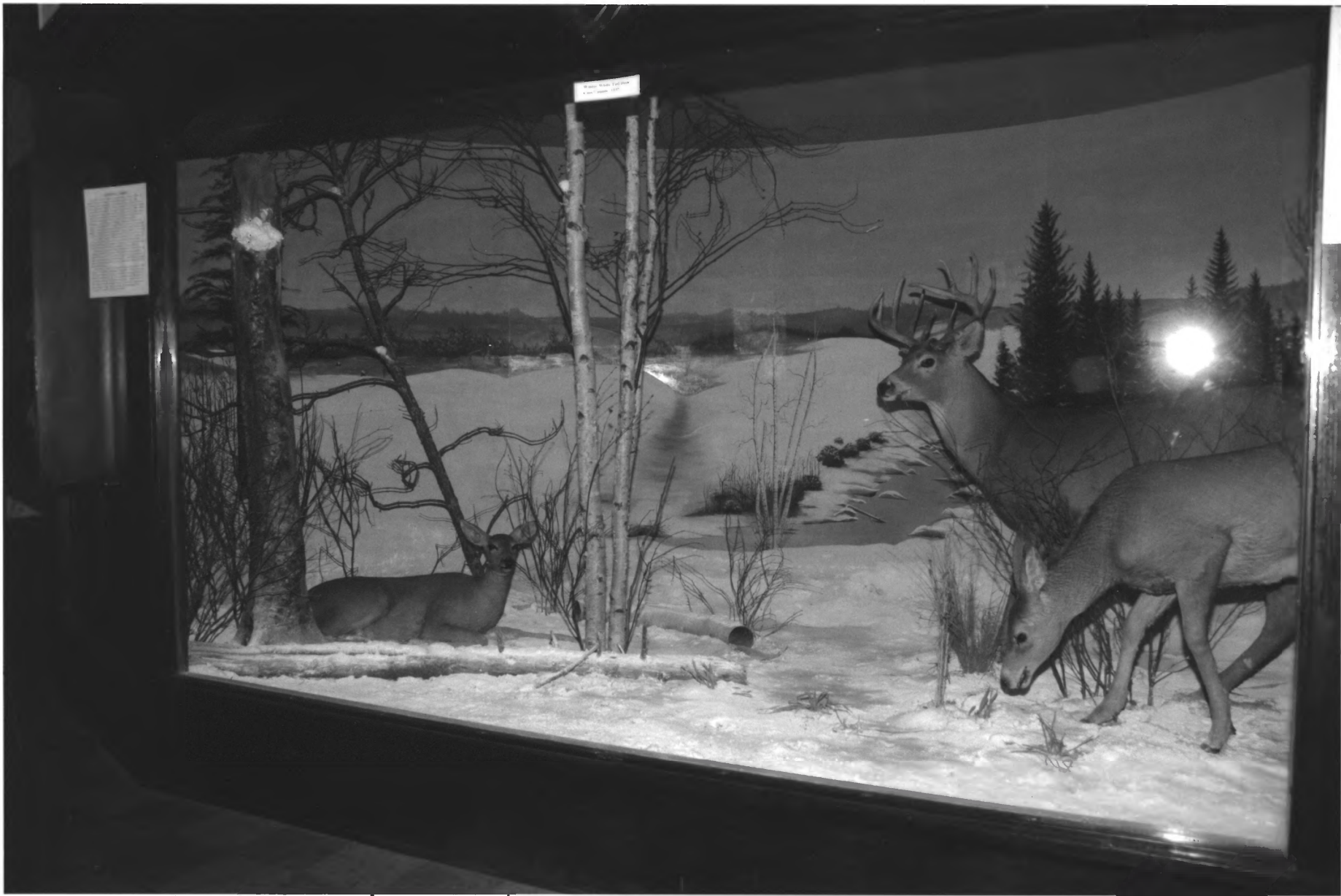
Cass Co., Mn

Photographer: ROLF Anderson

August 2002

MN Historical Society, 345 Kellogg Blvd. W., St. Paul, MN 55102

Looking S



Conservation Building Exhibits
Cass Co., MN
014391-6

Conservation Building Exhibits

014391-6

Cass Co., Mn

Photographer: ROLF Anderson

August 2002

Mn Historical Society, 345 Kellogg Blvd. W., St. Paul, Mn 55102

Looking SW