

United States Department of the Interior  
National Park Service



National Register of Historic Places  
Registration Form

NATIONAL  
REGISTER

This form is for use in nominating or requesting determinations for individual properties and districts. See instructions in *How to Complete the National Register of Historic Places Registration Form* (National Register Bulletin 16A). Complete each item by marking "x" in the appropriate box or by entering the information requested. If an item does not apply to the property being documented, enter "N/A" for "not applicable." For functions, architectural classification, materials, and areas of significance, enter only categories and subcategories from the instructions. Place additional entries and narrative items on continuation sheets (NPS Form 10-900a). Use a typewriter, word processor, or computer, to complete all items.

1. Name of Property

historic name Weymouth Civic District

other names/site number N/A

2. Location

street & number 75 Middle Street N/A not for publication

city or town Weymouth N/A vicinity

state Massachusetts code MA county Norfolk code 021 zip code 02189

3. State/Federal Agency Certification

As the designated authority under the National Historic Preservation Act, as amended, I hereby certify that this  nomination  request for determination of eligibility meets the documentation standards for registering properties in the National Register of Historic Places and meets the procedural and professional requirements set forth in 36 CFR Part 60. In my opinion, the property  meets  does not meet the National Register criteria. I recommend that this property be considered significant  nationally  statewide  locally. ( See continuation sheet for additional comments.)

Judith B. McDonough 2/3/92  
Signature of certifying official/Title Judith B. McDonough Date Executive Director,  
Massachusetts Historical Commission, State Historic Preservation Officer  
State of Federal agency and bureau

In my opinion, the property  meets  does not meet the National Register criteria. ( See continuation sheet for additional comments.)

Signature of certifying official/Title \_\_\_\_\_ Date \_\_\_\_\_  
State or Federal agency and bureau \_\_\_\_\_

4. National Park Service Certification

I hereby certify that the property is:

- entered in the National Register.  
 See continuation sheet.
- determined eligible for the National Register  
 See continuation sheet.
- determined not eligible for the National Register.
- removed from the National Register.
- other, (explain:)

for Signature of the Keeper

Date of Action

Bryan Savage

3/27/92

**5. Classification**

**Ownership of Property**  
(Check as many boxes as apply)

- private
- public-local
- public-State
- public-Federal

**Category of Property**  
(Check only one box)

- building(s)
- district
- site
- structure
- object

**Number of Resources within Property**  
(Do not include previously listed resources in the count.)

Contributing	Noncontributing	
2	0	buildings
		sites
3	0	structures
2	0	objects
7	0	Total

**Name of related multiple property listing**  
(Enter "N/A" if property is not part of a multiple property listing.)

N/A

**Number of contributing resources previously listed in the National Register**

0

**6. Function or Use**

**Historic Functions**  
(Enter categories from instructions)

Government/Town Hall

Education/School

Recreation and Culture/Monument; Theater

**Current Functions**  
(Enter categories from instructions)

Government/Town Hall

Recreation and Culture/Monument; Theater

**7. Description**

**Architectural Classification**  
(Enter categories from instructions)

Late 19th and 20th Century Revival/  
Colonial Revival, Tudor Revival

**Materials**  
(Enter categories from instructions)

foundation Brick; Concrete

walls Brick; Stucco

roof Slate; Asphalt

other \_\_\_\_\_

**Narrative Description**

(Describe the historic and current condition of the property on one or more continuation sheets.)

**8. Statement of Significance**

**Applicable National Register Criteria**

(Mark "x" in one or more boxes for the criteria qualifying the property for National Register listing.)

- A** Property is associated with events that have made a significant contribution to the broad patterns of our history.
- B** Property is associated with the lives of persons significant in our past.
- C** Property embodies the distinctive characteristics of a type, period, or method of construction or represents the work of a master, or possesses high artistic values, or represents a significant and distinguishable entity whose components lack individual distinction.
- D** Property has yielded, or is likely to yield, information important in prehistory or history.

**Criteria Considerations**

(Mark "x" in all the boxes that apply.)

Property is:

- A** owned by a religious institution or used for religious purposes.
- B** removed from its original location.
- C** a birthplace or grave.
- D** a cemetery.
- E** a reconstructed building, object, or structure.
- F** a commemorative property.
- G** less than 50 years of age or achieved significance within the past 50 years.

**Areas of Significance**

(Enter categories from instructions)

Architecture

Community Planning and Development

Government

Education

**Period of Significance**

1925-1940

**Significant Dates**

N/A

**Significant Person**

(Complete if Criterion B is marked above)

N/A

**Cultural Affiliation**

**Architect/Builder**

McLaughlin and Burr;

Prescott, Howard B.

**Narrative Statement of Significance**

(Explain the significance of the property on one or more continuation sheets.)

**9. Major Bibliographical References**

**Bibliography**

(Cite the books, articles, and other sources used in preparing this form on one or more continuation sheets.)

**Previous documentation on file (NPS):**

- preliminary determination of individual listing (36 CFR 67) has been requested
- previously listed in the National Register
- previously determined eligible by the National Register
- designated a National Historic Landmark
- recorded by Historic American Buildings Survey # \_\_\_\_\_
- recorded by Historic American Engineering Record # \_\_\_\_\_

**Primary location of additional data:**

- State Historic Preservation Office
- Other State agency
- Federal agency
- Local government
- University
- Other

Name of repository:

Massachusetts Historical Commission

10. Geographical Data

Acreage of Property 4 acres

UTM References

(Place additional UTM references on a continuation sheet.)

1 19 339920 4676060
Zone Easting Northing

2 19 340020 4675860

5: 19 339910 4675860

Verbal Boundary Description

(Describe the boundaries of the property on a continuation sheet.)

Boundary Justification

(Explain why the boundaries were selected on a continuation sheet.)

11. Form Prepared By

name/title Christine S. Beard, Consultant with Betsy Friedberg; National Register Director

organization Massachusetts Historical Commission date January, 1992

street & number 80 Boylston Street telephone (617) 727-8470

city or town Boston state MA zip code 02116

Additional Documentation

Submit the following items with the completed form:

Continuation Sheets

Maps

A USGS map (7.5 or 15 minute series) indicating the property's location.

A Sketch map for historic districts and properties having large acreage or numerous resources.

Photographs

Representative black and white photographs of the property.

Additional items

(Check with the SHPO or FPO for any additional items)

Property Owner

(Complete this item at the request of SHPO or FPO.)

name

street & number telephone

city or town state zip code

Paperwork Reduction Act Statement: This information is being collected for applications to the National Register of Historic Places to nominate properties for listing or determine eligibility for listing, to list properties, and to amend existing listings. Response to this request is required to obtain a benefit in accordance with the National Historic Preservation Act, as amended (16 U.S.C. 470 et seq.).

Estimated Burden Statement: Public reporting burden for this form is estimated to average 18.1 hours per response including time for reviewing instructions, gathering and maintaining data, and completing and reviewing the form. Direct comments regarding this burden estimate or any aspect of this form to the Chief, Administrative Services Division, National Park Service, P.O. Box 37127, Washington, DC 20013-7127; and the Office of Management and Budget, Paperwork Reductions Projects (1024-0018), Washington, DC 20503.

# National Register of Historic Places Continuation Sheet

Weymouth Civic District,  
Weymouth, Massachusetts

Section number 7 Page 1

## DESCRIPTION

The Weymouth Civic District, Weymouth, Massachusetts, is a complex of two buildings and two monuments situated near the center of town. The district includes roughly four acres, part of a larger town-owned parcel that contains 11.3 acres. The district is bounded on the north by Academy Avenue, on the east by Middle Street, on the south by another town-owned lot and on the west by the remainder of the 11.3 acre town lot that contains a modern high school building constructed to replace an earlier high school that was destroyed by fire. Beyond the district to the west, north and east are residential areas containing houses from various periods, while a mixed residential/commercial areas lies to the south. Standing within the district are the Weymouth Town Hall (1928), Weymouth Industrial School (1926), the Memorial Cross (1930) and the Memorial Wall/Open Air Theater (1929). Access to the complex is provided by three driveways from Middle Street and one from Academy Avenue. The driveways lead to two parking areas, one west of the Town Hall and another west of the Memorial Cross. Early descriptions of the complex indicate that the driveways and parking areas were part of the historic site.

The oldest building on the site is the Weymouth Industrial School, which is located at the southwest corner of the lot, west of the Memorial Cross. The Industrial School is a 1 1/2-story Tudor Revival-style structure. It is comprised of a rectangular central section with short wings extending to the north from its east and west ends. The school rests on a raised concrete foundation (fully exposed at the south and east elevations) with a stucco finish. Window openings are symmetrically placed at the north and south elevations and asymmetrically at the side elevations. Basement windows are of varying sizes, while most at the first floor are uniform. Original sash have been replaced in most window openings, except for about half of the basement windows. Elevations at the first floor are also finished with stucco, with exterior trim dominated by a regular pattern of half timbering. Corners of the building are defined by wide cornerboards that rise to stylized capitals. A wood course separates the basement level from the first floor. Metal security grilles cover the basement windows at the south elevation. The main block of the building is enclosed by a hip roof, while the wings have gable ends north. A round cupola capped by a copper dome rises from the center of the main block.

The principal elevation of the Industrial School faces north. The focal point of the facade is a central entry. The entry consists of a set of modern double doors flanked by paired pilasters that support a wide entablature with dentils. Above the doorway is a large pedimented gable, within which is set a recessed date plaque. Two windows flank the entry. At the intersection of the wings and main block are two semi-circular bays, containing three windows each, that are finished to match the remainder of the building. Exposed end walls of the wings (north walls) are identical, with three windows at the first floor and an oculus within the pedimented gable. The oculi contain original wheel windows.

(continued)

## National Register of Historic Places Continuation Sheet

Weymouth Civic District,  
Weymouth, Massachusetts

Section number 7 Page 2

The rear (south) elevation of the school is sixteen bays wide. Access to the building at this elevation is gained by means of a secondary entry at the basement that contains a modern door (sixth bay from west end). A pedimented gable dormer projects from the roof at the center of this elevation.

The west elevation is divided into eight bays, each of which contains a window, at the first floor and six unequal bays at the basement. The basement consists of four single windows, one paired window and a secondary entry containing a modern door (centered on the elevation).

The east elevation has four unequally spaced windows and a secondary entry containing a modern door at the basement. The entry appears to have been modified over the years, and the two northernmost bays previously contained windows (sills remain visible). At the first floor, the five easternmost bays each contain one window.

Weymouth Town Hall is a 2 1/2-story brick structure, designed in the Colonial Revival style as a copy of the Old State House in Boston. Dimensions of the Old State House were increased one-fifth for the Weymouth building. The Weymouth Town Hall rests on a raised brick basement pierced by evenly spaced windows, some of which contain 6/6 sash while others contain louvered vents. Above the basement, windows, except as noted, are topped by brick voussoir and contain 12/12 replacement sash. At each elevation, a brick beltcourse runs between the first and second stories. The north and south elevations have an additional brick beltcourse between the second and third floors. The building is enclosed by a slate-covered gable roof with stepped parapets at the end walls (north and south). A wood cornice with modillions defines the roof line at the east and west elevations. Gabled dormers containing 6/6 sash project from the east and west elevations of the roof. A three-tiered wood cupola rises from the center of the roof and is decorated with Colonial Revival detailing, including quoining, oculi, turned balustrades, tracery windows and modillions.

The facade (east elevation) is arranged symmetrically, with ten windows flanking the central main entry at the first floor and eleven evenly spaced windows at the second floor. The main entry is recessed within a rectangular opening framed by a pedimented gable supported by scroll brackets which in turn rest on fluted columns set on granite bases. The entry reveals are decorated with rusticated wood panels. The entry contains a set of wood double doors, each leaf of which contains four panels. The doors are set beneath a fanlight. A granite stoop leads to the entry.

The rear (west) elevation is nearly identical to the facade, except that it has nine bays rather than eleven, and the entry has been modified. The entry is set within a rectangular opening framed by a pedimented gable supported by scroll brackets, which in turn rest on fluted columns set on granite bases.

(continued)

## National Register of Historic Places Continuation Sheet

Weymouth Civic District,  
Weymouth, Massachusetts

Section number 7 Page 3

The entry contains a set of wood double doors, each leaf of which contains eight glass panes and two wood panels. The doors are topped by a blind fanlight. At the second floor, two of the bays (second from north and south ends) contain doorways that open onto iron balconies. The balconies are supported on scroll brackets and the doors are glazed (this appears to be an original condition).

The south elevation is three bays wide with a fully exposed basement. At the basement, two windows flank a brick stoop with slate treads. Beneath the stoop is a secondary entry containing a modern door for handicap access. At the first floor, a central entry is flanked by two windows. The entry contains a set of wood double doors, each leaf of which has four panels. Above the doors is a four-pane transom. At the second floor, a central doorway and balcony are flanked by two windows. The doorway is topped by a segmentally arched pediment above an entablature with dentils. The entablature rests on fluted pilasters with Corinthian capitals. The doorway contains glazed double doors surrounded by multipane sidelights and transom. The balcony is supported on scroll brackets and has a simple balustrade, all constructed of wood. At the third floor, a central window is flanked by two blind oculi with brick surrounds interspersed with terracotta bosses. At the peak of the gable, a clock framed by an acanthus motif is set into the wall.

The north elevation is three bays wide, with a central entry flanked by two windows at the first floor, three windows at the second floor, a central window flanked by two blind oculi at the third floor and a plaque containing the town seal surrounded by an acanthus motif set beneath the gable. At the first floor, the entry is recessed within a rectangular opening framed by surrounds identical to those at the west elevation. Reveals of the entry are decorated with wood panelling. The entry contains one wide wood door with twelve panels set beneath an arcaded transom. A granite stoop leads to the entry.

Just south of the Town Hall is the Memorial Wall/Open Air Theater. The Open Air Theater is a stretch of grassed lawn (roughly 220 by 180 feet) that extends from a parking area in front of the high school toward Middle Street. At the east end of the theater, the ground rises sharply to form a semi-circular grass stage. The Memorial Wall forms the rear (east) wall of the stage. The principal elevation of the wall faces east. It is constructed of brick with concrete coping and is arranged symmetrically in three sections connected by two iron gates. The wall is roughly 150 feet in length. Along the wall are brass and bronze plaques listing the names of Weymouth residents who served in the various wars. The central section has a main block that is flanked by brick piers rising to concrete caps on which rest concrete eagles. On either side of the main block, the wall steps down about two feet and extends to meet another brick pier with concrete ball cap. Iron gates then connect the two outermost sections of the wall, which are then terminated with brick piers.

(continued)

# National Register of Historic Places Continuation Sheet

Weymouth Civic District,  
Weymouth, Massachusetts

Section number 7.8 Page 4.1

---

South of the Memorial Wall, set up on a knoll, is the Memorial Cross. The design of the granite monument is simple and dignified: an elongated Latin cross, tapering to a slightly flared base, mounted on a two-stage plinth of monumental proportions. A lower step surrounding the plinth is granite ashlar. The base, shaft, and arms of the cross are hexagonal in shape.

## Archaeological Description

While no prehistoric sites are currently recorded in the district, it is possible that sites are present. Three sites are recorded in the general area (within one mile). In general, however, the district lacks favorable locational criteria that would indicate a moderate or high potential for Native American resources. There is also a low potential for historic archaeological survivals within the district. Late 19th and 20th century historic period development characterized by two large structures with basements, monuments and landscaping including an open air theater, have disturbed most of the district. This factor combined with the overall lack of pre-late 19th/early 20th century land use indicates a low potential for historic archaeological survivals.

(end)

## STATEMENT OF SIGNIFICANCE

The Weymouth Civic District, Weymouth, Massachusetts, possesses integrity of location, design, setting, materials, workmanship and association with the development of Weymouth's principal governmental and educational complex. The district is also significant as a well-preserved complex of municipal structures, including the Weymouth Town Hall (1928), Weymouth Industrial School (1926), the Memorial Cross (1930) and the Memorial Wall/Open Air Theater (1929). The district is of local significance and meets Criteria A and C for listing on the National Register of Historic Places.

At Weymouth's annual town meeting of 1927, the sum of \$175,000 was appropriated and a committee appointed to select a site and plan for the construction of new town offices for Weymouth and a memorial for veterans of the various wars. For six months, the Committee, headed by Colonel Gilbert Bauer, considered fifteen potential sites and ultimately found that the grounds adjoining the Weymouth High School would be most appropriate for the town's needs. The decision was based on the desire to have a central location where the town's principal civic activities could be undertaken. There were already two buildings located on the site, the High School and Industrial School, and construction of a new town hall and memorial monuments would clearly create an impressive complex. In their final report, the Committee stated that Weymouth wanted "something like the civic group in Springfield which had brought prosperity to that city." Another reason leading the Committee to select the High School site was that the site offered a unique

(continued)

## National Register of Historic Places Continuation Sheet

Weymouth Civic District,  
Weymouth, Massachusetts

Section number 8 Page 2

---

opportunity to construct an open-air theater as a joint project with the School Department. Plans were devised for a theater that would be used for high school performances or graduation exercises and for public functions.

When the High School site was selected in 1927, it contained the Weymouth High School and the Weymouth Industrial School. The high school was a large, brick Romanesque Revival-style structure built in 1898 (enlarged in 1923 and 1928) when the town's two earlier high schools were consolidated to create a centralized facility. The school was destroyed by fire in the 1970s and rebuilt in a modern design out of brick, which minimizes the visual impact to the older buildings on the site.

The Weymouth Industrial School was constructed in 1926 to house the vocational training program for high school students. In the early 1920s, educators throughout the country were growing increasingly concerned over the lack of "practical" training being offered to students. With industry having moved from the home into the factories and increasing numbers of people moving away from trades, children were receiving less vocational training at home than previous generations had. By 1925, school administrators in Weymouth had recognized the need for vocational training and had added courses in agriculture, carpentry, commercial printing and home-making to the high school curriculum. The School Committee reported in 1925 that "in order to satisfy the increasing demand for this type of education, and distribute the boys graduated from the school to a larger number of industries, provisions should be made during the coming year to add sheet metal work, electric wiring and automotive repairing... To do this, it will be necessary to build a shop outside of our main building." Plans for the Industrial School were prepared in consultation with Boston architect Howard B. S. Prescott. Prescott for many years had been staff architect for the Boston Wharf Company and had designed the 1923 addition to the Weymouth High School. The Industrial School is of a simple Tudor Revival design and much of it was built by the boys in the high school carpentry program. The building has been altered very little over time and retains all major elements of its original Tudor Revival design, including its stucco exterior, half timbering, pedimented gables and stylized entry pavilion. The setting has also remained very much intact, with a circular driveway leading to the front of the school and a stone wall bordering the south lot line. A driveway has been added between the stone wall and the rear of the school to provide access to garages and storage buildings west of the school.

For some time prior to 1927, the need for modern town offices in a centralized location had been an issue for townspeople. The previous town hall, which had been located in East Weymouth, was destroyed by fire in 1914. After that, town offices were rented and town meetings held in the Fogg Opera House in South Weymouth or the Odd Fellows Opera House in East Weymouth. Land on which the town hall stands was part of a parcel that, prior to 1927, bordered the

(continued)

## National Register of Historic Places Continuation Sheet

Weymouth Civic District,  
Weymouth, Massachusetts

Section number 8 Page 3

high school lot on the north and contained a small house. In 1927, the Town purchased the lot from Mrs. S. Etta Knowles for \$5,040. Plans for the town office building were provided by Boston architects McLaughlin & Burr. This firm was well known for their design of institutional buildings in towns throughout the Boston area. The model for their design was Boston's Old State House, the dimensions of which were enlarged by one-fifth. Construction of the Town Hall began in 1928 and the building was dedicated on January 22, 1929. The town departments moved into the building on December 24, 1928. On both the interior and exterior, the Colonial Revival-style Town Hall remains well preserved, the only major exterior change being replacement of original windows. As originally designed, the basement, first and second floors were finished for office space while the third floor was left unfinished for future growth. The third floor has been finished off and now also contains town offices. Recent work to the building resulted in restoration of a large hearing room at the south end of the building (a copy of the Council Chamber at the Old State House) and the central stair hall.

When the civic center was planned, it was intended that there be a memorial wall at the stage end (east) of the open-air theater and a memorial bell tower. It appears that the tower may have proven to be too costly, as that plan was superseded by one to build a Memorial Cross. The Committee on New Town Offices and War Memorial reported in 1929 that "one of the chief reasons which led us to recommend placing the Town Hall on its present site was the opportunity offered by the knoll Easterly of the South Wing of the High School...in a place where it would balance the Town Hall and where the coming generations of school children would see it and learn its significance." The Memorial Cross that was ultimately erected on the knoll to honor the men of Weymouth who had died in the various wars was modeled after a similar cross at Arlington National Cemetery. The Memorial Cross was completed and dedicated in 1929.

The School Department and Committee on New Town Offices and War Memorial worked together on the planning and construction of the Memorial Wall/Open Air Theater as it was intended for use by the high school and for town functions. Construction began in 1928 and the memorial tablets for the Civil War, King Philip's War, the Philippine Insurrection and World War I were dedicated on November 10, 1928; those for the Revolutionary War, French and Indian War and the War of 1812 were dedicated on April 19, 1930. Since construction of the wall, memorial tablets have also been added for the War with Spain, Second Nicaraguan Campaign, World War II, the Korean Conflict and the Vietnam War. A placque on the west side of the wall designates the Open Air Theater as the Lieutenant Ralph Talbot Theater.

(end)

# National Register of Historic Places Continuation Sheet

Weymouth Civic District,  
Weymouth, Massachusetts

Section number 9, 10 Page 1

---

## 9. Major Bibliographical References

Atlas of Norfolk County, Massachusetts (1888)  
Sanborn Insurance Atlas (1927)  
Weymouth Town Directories (Various Years)  
The Weymouth Gazette (October, 1927)

## 10. Verbal Boundary Description

The district occupies a 4 acre portion of a larger 11.3 acre town owned lot. The boundaries have been drawn to include the seven contributing resources on the 11.3 acre town-owned lot. See attached assessors map for exact boundaries.

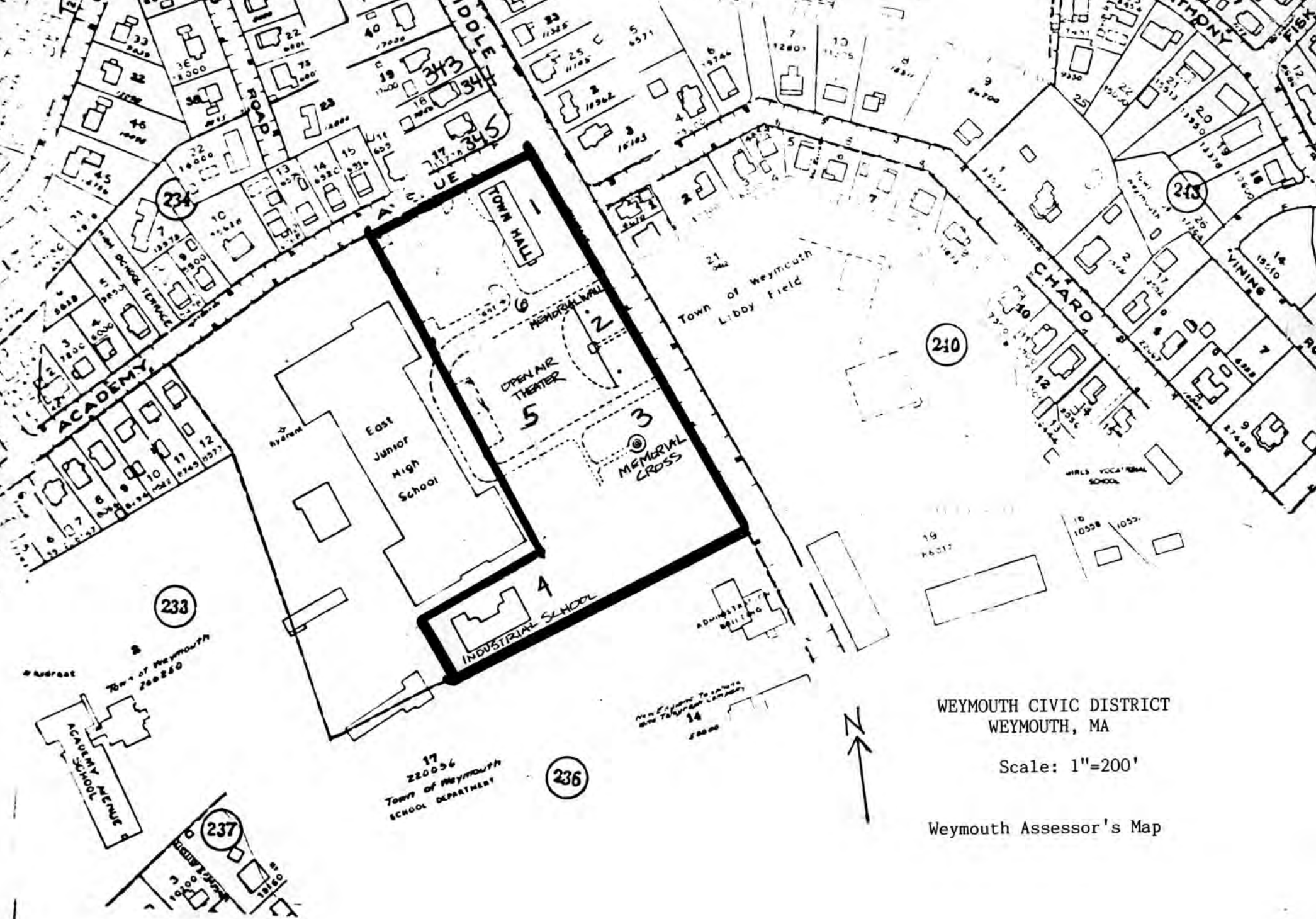
## Boundary Justification

The Weymouth Civic District includes only that portion of the town-owned lot which contains resources contributing to this district of early twentieth century municipal structures, which include the Town Hall, Industrial School, Memorial Wall/Open Air Theater, and Memorial Cross. Excluded from the boundaries are a modern school building and three outbuildings. North and south of the lot are residential areas dominated by nineteenth and early twentieth century houses. East and west of the lot are mid-twentieth century neighborhoods.

WEYMOUTH CIVIC DISTRICT  
DISTRICT DATA SHEET

<u>Address</u>	<u>Map #</u>	<u>MHC #</u>	<u>Historic Name</u>	<u>Date</u>	<u>Style</u>	<u>Type*</u>	<u>Status</u>
75 Middle Street	1	321	Weymouth Town Hall	1928	Colonial Revival	B	C
75 Middle Street	2	none	Memorial Wall/Open Air Theater	1929	none	O	C
75 Middle Street	3	320	Memorial Cross	1930	none	O	C
75 Middle Street	4	322	Weymouth Industrial School	1926	Tudor Revival	B	C
75 Middle Street	5	none	Open Air Theater	1929	none	S	C
75 Middle Street	6	none	Driveways and Parking	1929	none	S	C
75 Middle Street	7	none	Stone Wall	1926	none	S	C

\*B=Building  
O=Object  
S=Structure



WEYMOUTH CIVIC DISTRICT  
WEYMOUTH, MA

Scale: 1"=200'

Weymouth Assessor's Map

United States Department of the Interior  
National Park Service

National Register of Historic Places  
Continuation Sheet

Section number \_\_\_\_\_ Page \_\_\_\_\_

SUPPLEMENTARY LISTING RECORD

NRIS Reference Number: 92000146 Date Listed: 03/27/92

Weymouth Civic District                      Norfolk                      MA  
Property Name                                      County                                      State

N/A  
Multiple Name

This property is listed in the National Register of Historic Places in accordance with the attached nomination documentation subject to the following exceptions, exclusions, or amendments, notwithstanding the National Park Service certification included in the nomination documentation.

  
Signature of the Keeper

3/27/92  
Date of Action

Amended Items in Nomination:

**8. Statement of Significance: Criteria and Consideration(s)**

Criteria exception f. is applicable for the commemorative property.

This information was confirmed with MASHPO staff by telephone.

**DISTRIBUTION:**

- National Register property file
- Nominating Authority (without attachment)

UNITED STATES DEPARTMENT OF THE INTERIOR  
NATIONAL PARK SERVICE

NATIONAL REGISTER OF HISTORIC PLACES  
EVALUATION/RETURN SHEET

REQUESTED ACTION: NOMINATION

PROPERTY NAME: Weymouth Civic District

MULTIPLE NAME:

STATE & COUNTY: MASSACHUSETTS, Norfolk

DATE RECEIVED: 2/11/92      DATE OF PENDING LIST: 2/25/92  
DATE OF 16TH DAY: 3/12/92      DATE OF 45TH DAY: 3/27/92  
DATE OF WEEKLY LIST:

REFERENCE NUMBER: 92000146

NOMINATOR: STATE

REASONS FOR REVIEW:

APPEAL: N    DATA PROBLEM: N    LANDSCAPE: N    LESS THAN 50 YEARS: N  
OTHER: N    PDIL: N    PERIOD: Y    PROGRAM UNAPPROVED: N  
REQUEST: N    SAMPLE: N    SLR DRAFT: Y    NATIONAL: N

COMMENT WAIVER: N

ACCEPT     RETURN     REJECT    3/27/92 DATE

ABSTRACT/SUMMARY COMMENTS:

RECOM./CRITERIA Accept etc  
REVIEWER Savall  
DISCIPLINE Archaeological History  
DATE 3/27/92

DOCUMENTATION see attached comments Y/N see attached SLR Y/N

---

CLASSIFICATION

count       resource type

---

STATE/FEDERAL AGENCY CERTIFICATION

---

FUNCTION

historic       current

---

DESCRIPTION

architectural classification  
 materials  
 descriptive text

---

SIGNIFICANCE

Period      Areas of Significance--Check and justify below

Specific dates      Builder/Architect  
Statement of Significance (in one paragraph)

summary paragraph  
 completeness  
 clarity  
 applicable criteria  
 justification of areas checked  
 relating significance to the resource  
 context  
 relationship of integrity to significance  
 justification of exception  
 other

---

BIBLIOGRAPHY

---

GEOGRAPHICAL DATA

acreage       verbal boundary description  
 UTM's       boundary justification

---

ACCOMPANYING DOCUMENTATION/PRESENTATION

sketch maps     USGS maps     photographs     presentation

---

OTHER COMMENTS

Questions concerning this nomination may be directed to

\_\_\_\_\_ Phone \_\_\_\_\_

Signed \_\_\_\_\_ Date \_\_\_\_\_



WEYMOUTH

Weymouth Town Hall  
Weymouth Civic District  
Weymouth, MA

Photographer: Christine S. Beard

Date: Spring, 1990



Negative: Christine S. Beard Associates  
25 Cottage St  
Natick, MA

View: Looking northwest showing facade  
(east) and south elevation

Photo: 1 of 5

WEYMOUTH TOWN HALL  
WEYMOUTH CIVIC DISTRICT  
WEYMOUTH, MA

VIEW: LOOKING NW showing facade (E) & S ELEVATION

PHOTOGRAPHER: CHRISTINE S. BEARD  
25 COTTAGE ST  
NATICK, MA

SPRING, 1990

1 of 5



Weymouth Industrial School  
Weymouth Civic District  
Weymouth, MA

Photographer: Christine S. Beard

Date: Spring, 1990

  
ix  
ices  
90 N

  
**Kodak**  
Processing Services  
OCT. 90 N

  
**Kodak**  
Processing Services  
OCT. 90 N

  
**Kodak**  
Processing Services  
OCT. 90 N

  
**Kodak**  
Processing Services  
OCT. 90 N

Negative: Christine S Beard Associates  
25 Cottage St  
Natick, MA

View: Looking southeast at facade  
(north)

Photo: 2 of 5

WEYMOUTH INDUSTRIAL SCHOOL  
WEYMOUTH CIVIC DISTRICT  
WEYMOUTH, MA

View: Looking SE AT North facade

PHOTOGRAPHER: CHRISTINE S. BEARD  
25 COTTAGE ST  
NATICK, MA

SPRING, 1990

2 of 5



Memorial Wall  
Weymouth Civic District  
Weymouth, MA  
Photographer: Christine S. Beard  
Date: Spring, 1990

Kodak

Processing Services  
OCT. 90 N

Kodak

Processing Services  
OCT. 90 N

Kodak

Processing Services  
OCT. 90 N

Kodak

Processing Services  
OCT. 90 N

Kodak

Processing Services  
OCT. 90 N

Negative: Christine S Beard Associates  
25 Cottage St  
Natick, MA

View: Looking southwest at east  
side of wall

Photo: 3 of 5

MEMORIAL WALL  
WEYMOUTH CIVIC DISTRICT  
WEYMOUTH, MA

VIEW: LOOKING SW AT E side of Wall

PHOTOGRAPHER: CHRISTINE S. BEARD  
25 COTTAGE ST  
NATICK, MA

SPRING, 1990

3 of 5



PRO PATRIA

Memorial Cross  
Weymouth Civic District  
Weymouth, MA  
Photographer: Christine S Beard

Date: Spring, 1990  
Negative: Christine S Beard Associates  
25 Cottage St  
Natick, MA

View: Looking south at north  
side of Cross

Photo: 4 of 5

Memorial Cross  
Weymouth Civic District  
Weymouth, MA

VIEW: LOOKING S AT N SIDE OF CROSS  
PHOTOGRAPHER: CHRISTINE BEARD  
25 COTTAGE ST  
NATICK, MA

SPRING, 1990

4 of 5

Kodak  
Processing Services  
OCT. 90 N

Kodak  
Processing Services  
OCT. 90 N

Kodak  
Processing Services  
OCT. 90 N

Kodak  
Processing Services  
OCT. 90 N

Kodak  
Processing Services  
OCT. 90 N



Weymouth Town Hall, Open-Air Theater, Memorial Wall (left-right)  
Weymouth Civic District  
Weymouth, MA  
Photographer: Christine S. Beard  
Date: Spring, 1990

  
Kodak  
Processing Services  
OCT. 90 N

  
Kodak  
Processing Services  
OCT. 90 N

  
Kodak  
Processing Services  
OCT. 90 N

  
Kodak  
Processing Services  
OCT. 90 N

  
Kodak  
Processing Services  
OCT. 90 N

Negative: Christine S Beard Associates  
25 Cottage St  
Natick, MA

View: Looking northeast at south  
elevation of Town Hall and west  
face of wall

Photo: 5 of 5

WEYMOUTH TOWN HALL, OPEN-AIR THEATER, MEMORIAL  
WALL (L-R)

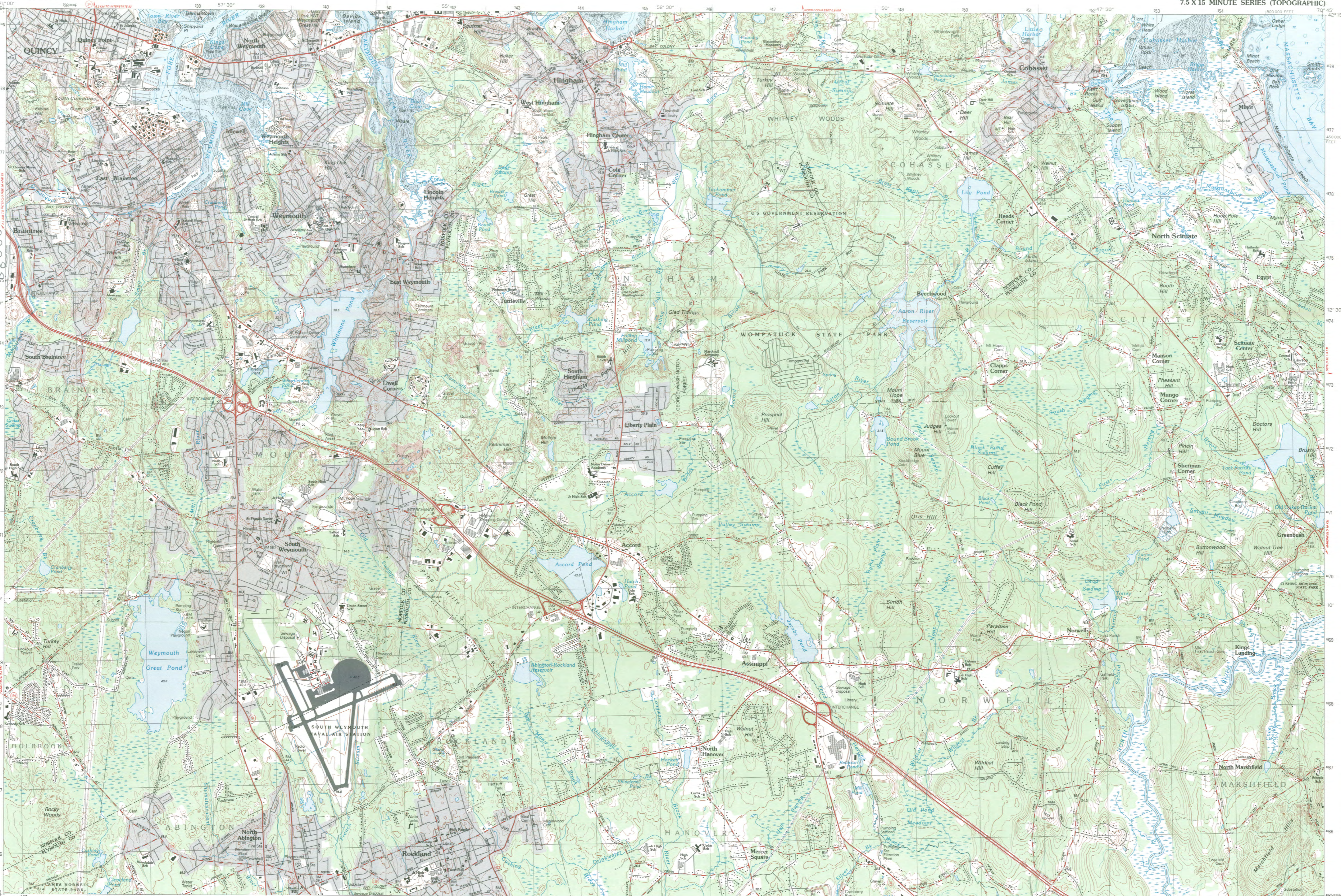
WEYMOUTH CIVIC DISTRICT

WEYMOUTH, MA

PHOTOGRAPHER: Christine Beard  
25 NATICK ST  
NATICK, MA

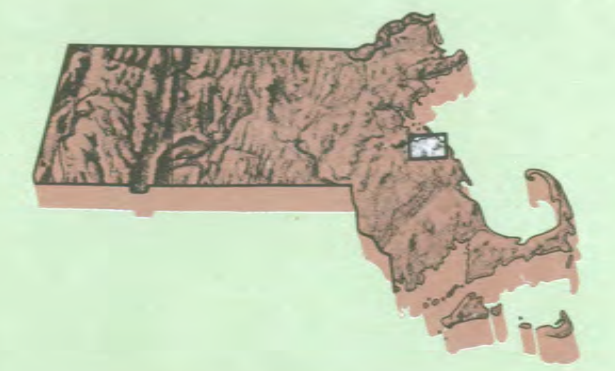
SPRING, 1990

5 of 5



# Weymouth MASSACHUSETTS

1:25 000-scale metric topographic map



7.5 X 15 MINUTE QUADRANGLE SHOWING

- Contours and elevations in meters
- Highways, roads and other manmade structures
- Water features
- Woodland areas
- Geographic names



GEOLOGICAL SURVEY

1984

Produced by the United States Geological Survey in cooperation with Massachusetts Department of Public Works  
 Control by USGS, NOS/NOAA, and Commonwealth of Massachusetts agencies  
 Compiled by photogrammetric methods from aerial photographs taken 1978. Field checked 1979. Map edited 1984  
 Supersedes Weymouth and Cohasset 1:25 000-scale maps dated 1971 and 1974  
 Selected hydrographic data compiled from NOAA charts 13269 (1980) and 13271 (1982). This information is not intended for navigational purposes  
 Transverse Mercator Projection and 1000-meter grid, zone 19: Universal  
 10,000-foot grid ticks based on Massachusetts coordinate system, modified zone 1927 North American Datum  
 To place on the predicted North American Datum 1983 move the projection lines 8 meters south and 42 meters west as shown by dashed corner ticks  
 There may be private interests within the boundaries of the National or State reservations shown on this map

CONTOUR INTERVAL 3 METERS  
 NATIONAL GEODETIC VERTICAL DATUM OF 1929  
 CONTROL ELEVATIONS SHOWN TO THE NEAREST 0.1 METERS  
 OTHER ELEVATIONS SHOWN TO THE NEAREST 0.5 METER  
 DEPTH CURVES AND SOUNDINGS IN METERS  
 DATUM IS MEAN LOW WATER  
 THE RELATIONSHIP BETWEEN THE TWO DATUMS IS VARIABLE  
 SHORELINE SHOWN REPRESENTS THE APPROXIMATE LINE OF MEAN HIGH WATER  
 THE MEAN RANGE OF TIDE IS APPROXIMATELY 2.7 METERS

THIS MAP COMPLES WITH NATIONAL MAP ACCURACY STANDARDS

CONVERSION TABLE		DECLINATION DIAGRAM		ADJOINING MAPS			
Meters	Feet	Diagram		1	2	3	4
1	3.2808			1	2	3	4
2	6.5616			5	6	7	8
3	9.8424						
4	13.1232						
5	16.4040						
6	19.6848						
7	22.9656						
8	26.2464						
9	29.5272						
10	32.8080						

To convert meters to feet multiply by 3.2808  
 To convert feet to meters multiply by 0.3048

UTM grid convergence (GM) at 1984 geographic center of map  
 Diagram is approximate

1	Boston South
2	Hull
3	Norwood
4	Schuette
5	Brockton
6	Whitman
7	Dorchester
8	Dorchester

FOR SALE BY U.S. GEOLOGICAL SURVEY DENVER, COLORADO 80225, OR RESTON, VIRGINIA 22092

## Topographic Map Symbols

- Primary highway, hard surface
- Secondary highway, hard surface
- Light-duty road, hard or improved surface
- Unimproved road, track
- Route marker: Interstate, U. S., State
- Railroad: standard gage; narrow gage
- Bridge: drawbridge
- Footbridge: covered; underpass
- Built-up area: only selected landmark buildings shown
- House; barn; church; school; large structure
- Boundary: National, with monument; State; County, parish; Civil township, precinct, district; Incorporated city, village, town; National or State reservation; small park; Land grant with monument; found section corner; U. S. public lands survey: range, township, section; Range, township, section line: location approximate; Fence or field line; Power transmission line, located tower; Dam; dam with lock; Cemetery; grave; Monument; U. S. location monument; Campground; picnic area; U. S. location monument; Windmill; water well; spring; Mine shaft; prospect; shaft or cave; Control: historical station; vertical station; spot elevation; Contours: index; intermediate; supplementary; depression; Distorted surface: strip mine, levee, sand; Bathymetric contours: index; intermediate; Prevailing lake and stream; intermittent lake and stream; Rapids, large and small; falls, large and small; Submerged marsh; marsh, swamp; Land subject to controlled inundation; woodland; Sand; mangrove; Orchard; vineyard.

A pamphlet describing topographic maps is available on request



February 3, 1992

Carol Shull  
National Register of Historic Places  
Department of the Interior  
National Park Service  
P.O. Box 37127  
Washington, DC 20013-7127

Dear Ms. Shull:

Enclosed please find the following nomination:

Weymouth Civic District, 75 Middle Street, Weymouth (Norfolk County),  
Massachusetts 02189.

There have been no owner objections for the above nomination.

The nomination was voted eligible by the State Review Board and is signed by  
myself, as the State Historic Preservation Officer. Owners were notified of  
pending State Review Board consideration 30-75 days before the meeting and  
were afforded the opportunity to comment.

Sincerely,

Judith B. McDonough  
Executive Director  
State Historic Preservation Officer  
Massachusetts Historical Commission

Enclosure:

cc: Richard Pattison, Chairperson, Weymouth Historical Commission  
John Carey, Chairman, Weymouth Board of Selectmen  
Anita Cinotti, Weymouth Planning Department  
Christine S. Beard, Preservation Consultant