

**United States Department of the Interior
National Park Service**

**National Register of Historic Places
Inventory—Nomination Form**

For NPS use only

received

date entered

Amoskeag Mfg. Co. Housing

Continuation sheet

Thematic Group Nomination

Item number

District C

Page 1

DESCRIPTION

District C includes nine blocks sited longitudinally north-south in two groups on a five acre site roughly bounded by Hollis Street, South Hampshire Lane, Bridge and Canal Streets.

Blocks #40-43 represent a major departure from the plain Greek Revival exteriors of the earlier blocks found in Districts A and B. Built in 1881, each 196'x34' brick block stands 3-1/2 stories high and contains four units defined on the exterior by projecting brick piers. The blocks are surmounted by hip roofs pierced by two hip roof dormers and corbeled chimneys at each unit. Though the slate roofs have been replaced with asbestos, the dormer walls are still clad in gray slate. Each unit has a centrally positioned Stick Style entry hood that shelters two paired entrances set within a flat arch. Two-over-two sash appears both singly and paired, capped by hood molds and resting on granite sills. Exterior walls are enriched by the use of contrasting black brick on hood molds and belt courses and by a stepped cornice finished with dentils. Rear two-story brick ells incorporate porches for each tenement. The interiors are simply finished with white pine floors and mantels supported by iron brackets. First floor doors are grained.

In 1980 the westernmost block (#43) was converted into office space. The west (rear) elevation, renovated to serve as the facade, now has a single broad-arched entrance serving each unit. The unit at the south end was removed to provide parking. Because of these alterations, the block has lost its architectural integrity and can no longer be considered contributing to the character of the district.

The remaining group of five blocks (#44-48) were completed in 1916 and resemble the 1881 blocks in scale, siting, massing and material. The thirty-five year gap is evident, however, in the Neo-Classical influence of the later blocks. The facade of each block features four entry porticoes, each sheltering two separate entrances. End units are accented with pedimented porticoes and applied granite pediments above the granite belt course. Six-over-six sash is set within rectangular openings trimmed with granite keystones and sills, except on ground floor inner units where openings are segmentally arched. A paneled brick parapet capped with granite and stepped at the end elevations completes the design.

STATEMENT OF SIGNIFICANCE

District C possesses integrity of location, design, setting, feeling and workmanship. It is significant historically for its association with one of the nation's earliest major cotton manufacturers, the Amoskeag Manufacturing Company, which later became the largest textile manufacturer in the world. Architecturally, the district derives its importance as a little-altered complex of late 19th century corporation housing.

**United States Department of the Interior
National Park Service**

**National Register of Historic Places
Inventory—Nomination Form**

For NPS use only
received
date entered

Continuation sheet

Item number District C Page 2

The 1881 blocks constitute four of seven that were erected as a group by Amoskeag.¹ By the time they were built, alternative housing opportunities within the City of Manchester were available, and it was no longer as necessary for the corporation to provide housing for its workers. The high architectural quality evident in these blocks suggest they were sought after by employees as attractive, convenient and well-maintained living arrangements.

The practice of siting tenement blocks longitudinally north-south in tiers and of not including corresponding overseers' blocks into the site plan had not been employed by Amoskeag for forty years, since the completion of the machine shop blocks north of Mechanic Street (demolished).

The blocks were designed by George Stevens, the civil engineer for Amoskeag and often referred to as its architect. Stevens was responsible for designing most of the mills and housing erected by the company in the late 19th century.

The 1916 blocks constitute the last company housing erected by Amoskeag. They were constructed during the final period of prosperity enjoyed by the company which ended shortly after World War I. Intended for overseers, the five blocks were designed to be as modern and comfortable as contemporary private apartments. Electricity, central heating, full cellars and roofs engineered to funnel melting snow directly into the interior sewer system were among the conveniences. In the mid-1970s the blocks were converted into condominiums; alterations were minimal and sensitively rendered.

OWNERS OF PROPERTY

<u>Sketch Map #</u>	<u>Address</u>	<u>Owner & Address</u>	<u>Assessors' Map #</u>	<u>Lot #</u>
40	32-46 Kidder Street 31-45 Bridge Street	Kidder Bridge Assoc. 1087 Elm Street Manchester, NH 03101	151	3
41	48-62 Kidder Street 47-61 Bridge Street	Kidder Bridge Assoc. 1087 Elm Street Manchester, NH 03101	151	3
42	70-84 Kidder Street 69-83 Bridge Street	Kidder Bridge Assoc. 1087 Elm Street Manchester, NH 03101	151	3
43	86-100 Kidder Street 85-99 Bridge Street	Hilco Inc. 1000 Elm Street Manchester, NH 03101	151	4
44	46 Amoskeag Place	Borbotsina, Thomas & Paula 46 Amoskeag Place Manchester, NH 03101	157	36

¹ The three westernmost blocks were demolished in the early 20th century.

2-3

**United States Department of the Interior
National Park Service**

**National Register of Historic Places
Inventory—Nomination Form**

For NPS use only
received
date entered

Continuation sheet

Item number District C Page 3

SKETCH MAP #	ADDRESS	OWNER & ADDRESS	ASSESSORS'	
			MAP #	LOT #
44	43 Amoskeag Place	Saidel, Raymond 1400 Lake Shore Road Manchester, NH 03103	157	37
44	50 Amoskeag Place	Shea, John & Diane 50 Amoskeag Place Manchester, NH 03101	157	38
44	52 Amoskeag Place	Shoults, Nans, M. 52 Amoskeag Place Manchester, NH 03101	157	39
44	51 Amoskeag Place	Connelly, Arthur M. 75 Kearney Street Manchester, NH 03101	157	32
44	49 Amoskeag Place	P.J. Realty 84 Bay Street Manchester, NH 03101	157	33
44	47 Amoskeag Place	McLane, Polly S. 47 Amoskeag Place Manchester, NH 03101	157	34
44	45 Amoskeag Place	Falconer, Louise & Zesiger, Mary, 45 Amoskeag Place Manchester, NH 03101	157	35
45	62 Amoskeag Place	Ammon, Roscoe III & Jo Anne T., 62 Amoskeag Place, Manchester, NH 03101	157	40
45	64 Amoskeag Place	Blanchette, William & Doris, 64 Amoskeag Place Manchester, NH 03101	157	41
45	66 Amoskeag Place	Glynn, David 66 Amoskeag Place Manchester, NH 03101	157	42
45	68 Amoskeag Place	Bourque, Charles & Rita 68 Amoskeag Place Manchester, NH 03101	157	43
45	67 Amoskeag Place	Pace, Charles & Jacqueline 350 Webster Street Manchester, NH 03101	157	28

**United States Department of the Interior
National Park Service**

**National Register of Historic Places
Inventory—Nomination Form**

For NPS use only
received
date entered

Continuation sheet

Item number District C

Page 4

SKETCH MAP #	ADDRESS	OWNER & ADDRESS	ASSESSORS'	
			MAP #	LOT #
45	65 Amoskeag Place	Kewley, Karen, L. 65 Amoskeag Place Manchester, NH 03101	157	29
45	63 Amoskeag Place	House, Dana & Kristi 63 Amoskeag Place Manchester, NH 03101	157	30
45	61 Amoskeag Place	Nahikian, Nishan & Carolyn 52 Hevey Street Manchester, NH 03102	157	31
46	94 Amoskeag Place	Borbotsina, Margaret S. 94 Amoskeag Place Manchester, NH 03101	157	44
46	96 Amoskeag Place	Cramer, Calvin & Muriel 96 Amoskeag Place Manchester, NH 03101	157	45
46	98 Amoskeag Place	Hartigan, Anthony & Judith, M., 98 Amoskeag Place, Manchester, NH 03101	157	46
46	100 Amoskeag Place	Carey, Dennis G. 100 Amoskeag Place Manchester, NH 03101	157	47
46	101 Amoskeag Place	DeGrandpre, Charles, A. 101 Amoskeag Place Manchester, NH 03101	157	24
46	99 Amoskeag Place	Forst, Donald J. 99 Amoskeag Place, Manchester, NH 03101	157	25
46	97 Amoskeag Place	Hayward, Catherine A. 97 Amoskeag Place Manchester, NH 03101	157	26
46	95 Amoskeag Place	Kata, Joseph & Ida 95 Amoskeag Place Manchester, NH 03101	157	27

**United States Department of the Interior
National Park Service**

**National Register of Historic Places
Inventory—Nomination Form**

For NPS use only
received
date entered

Continuation sheet

Item number District C

Page 5

<u>SKETCH MAP #</u>	<u>ADDRESS</u>	<u>OWNER & ADDRESS</u>	<u>ASSESSORS' MAP #</u>	<u>LOT #</u>
47	112 Amoskeag Place	Blodget, Hugh R. 157 Whitney Street Hartford, CT 06105	157	48
47	114 Amoskeag Place	Filip, Rita H. 114 Amoskeag Place Manchester, NH 03101	157	49
47	116 Amoskeag Place	Hannaway, Madelyn B. 116 Amoskeag Place Manchester, NH 03101	157	50
47	118 Amoskeag Place	Allen, Marcia K. 118 Amoskeag Place Manchester, NH 03101	157	51
47	117 Amoskeag Place	Werksman, Stuart & Barbara 117 Amoskeag Place, Manchester, NH 03101	157	20
47	115 Amoskeag Place	Desaulniers, Arthur & Irene, 115 Amoskeag Place Manchester, NH 03101	157	21
47	113 Amoskeag Place	Simons, Donald L. 113 Amoskeag Place Manchester, NH 03101	157	22
47	111 Amoskeag Place	McQueeney, Owen J. & Carmen S., 111 Amoskeag Place, Manchester, NH 03101	157	23
48	659 Amoskeag Place	Turner, Joan K. 45 Bay Street Manchester, NH 03101	157	12
48	657 Amoskeag Place	Indiveri, Vincent & Carol 23 Lancelot Lane, Basking Ridge, NJ 07920	157	13

**United States Department of the Interior
National Park Service**

**National Register of Historic Places
Inventory—Nomination Form**

For NPS use only
received
date entered

Continuation sheet

Item number District C

Page 6

<u>SKETCH MAP #</u>	<u>ADDRESS</u>	<u>OWNER & ADDRESS</u>	<u>ASSESSORS' MAP #</u>	<u>LOT #</u>
48	649 Amoskeag Place	Beauchesne, Lawrence & Lorraine, 649 Amoskeag Place, Manchester, NH 03101	157	14
48	647 Amoskeag Place	Wuchter, Georgina E. 647 Amoskeag Place Manchester, NH 03101	157	15
48	643 Amoskeag Place	Linda L. King 643 Amoskeag Place Manchester, NH 03101	157	16
48	641 Amoskeag Place	Gerard Desrochers 648 Belmont Street Manchester, NH 03101	157	17
48	635 Amoskeag Place	David A. Aborn 635 Amoskeag Place Manchester, NH 03101	157	18
48	633 Amoskeag Place	William & Jennifer Berner 633 Amoskeag Place Manchester, NH 03101	157	19
VL-8 (a-f)	Bounded by Hollis, Hampshire, Lane, Kidder, Canal Streets (between buildings)	Amoskeag Terrace Co. 419 Amherst Street Nashua, NH 03060	157	7,8,9,10, 11 (Parcels A-E)

GEOGRAPHICAL DATA

Acreage: 5 acres

Quadrangle name: Manchester South, New Hampshire

Scale: 1:24000

UTM:	ZONE	NORTHING	EASTING	ZONE	NORTHING	EASTING
	A 19	47-63-085	2-99-105	D 19	47-63-020	2-98-985
	B 19	47-62-955	2-99-120	E 19	47-63-020	2-98-940
	C 19	47-62-940	2-99-000	F 19	47-63-070	2-98-930

**United States Department of the Interior
National Park Service**

**National Register of Historic Places
Inventory—Nomination Form**

For NPS use only
received
date entered

Continuation sheet

Item number District C

Page 7

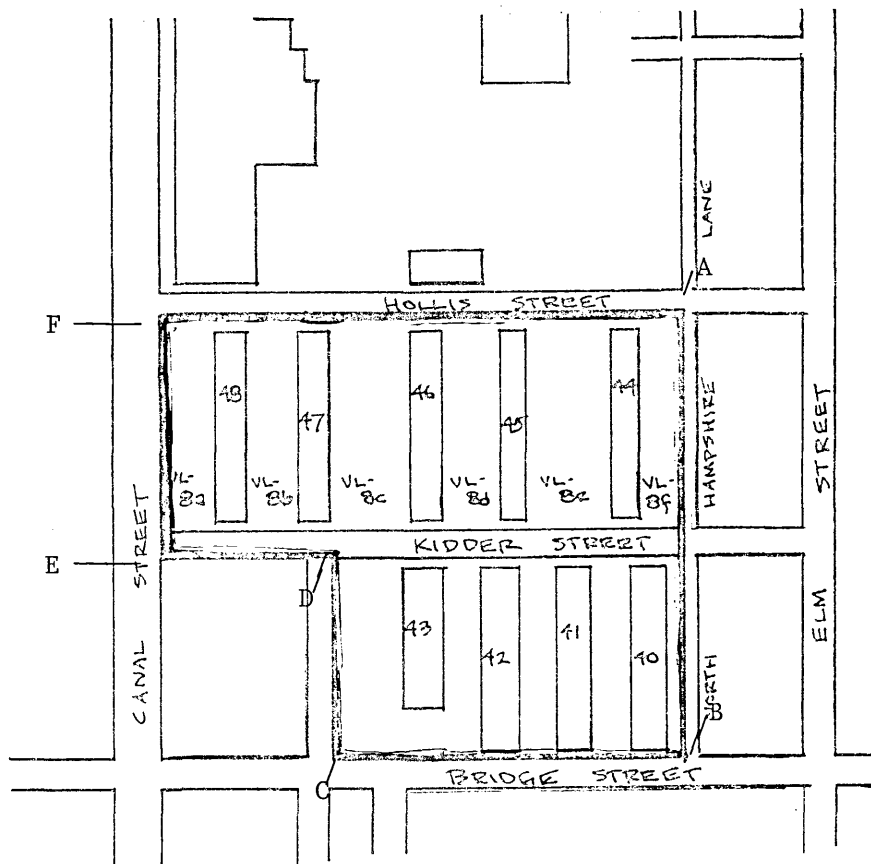
Verbal boundary description and justification:

District boundaries are marked in red on the attached sketch map and described as follows:

Beginning at the northeast corner of the district at the southwest intersection of Hollis Street and North Hampshire Lane, the boundary proceeds south along the west side of North Hampshire Lane to Bridge Street, continues west along the north side of Bridge Street to the southwest corner of the lot of Block #43, then north along the west lot line of #43 to Kidder Street, then west along the south side of Kidder Street to Canal Street, then north along the east side of Canal Street to Hollis Street, then east along the south side of Hollis Street to the starting point.

Boundaries were drawn to include the nine extant blocks built by Amoskeag in 1881 and 1916 and their lots.

DISTRICT C

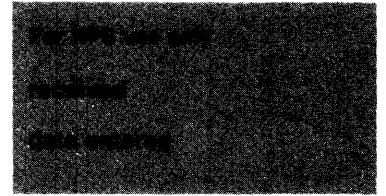


Adapted from
Planning Dept. map
1975, revised 1982
1" = 200'

Points A-F identify UTM reference points.

United States Department of the Interior
National Park Service

National Register of Historic Places
Inventory—Nomination Form



Continuation sheet

Item number

Page

Multiple Resource Area
Thematic Group

dnr-11

Name Amoskeag Manufacturing Company Housing Districts Thematic Resources
State New Hampshire

Nomination/Type of Review

Date/Signature

- | | | | | |
|-----|------------|--------------------|--------|--|
| 1. | District A | Substantive Review | Keeper | <u><i>Francis [Signature]</i> 11/14/84</u> |
| | | | Attest | _____ |
| 2. | District B | Substantive Review | Keeper | <u><i>Francis [Signature]</i> 11/12/84</u> |
| | | | Attest | _____ |
| 3. | District C | Substantive Review | Keeper | <u><i>Francis [Signature]</i> 11/12/84</u> |
| | | | Attest | _____ |
| 4. | District D | Substantive Review | Keeper | <u><i>Francis [Signature]</i> 11/12/84</u> |
| | | | Attest | _____ |
| 5. | District E | Substantive Review | Keeper | <u><i>Francis [Signature]</i> 11/12/84</u> |
| | | | Attest | _____ |
| 6. | | | Keeper | _____ |
| | | | Attest | _____ |
| 7. | | | Keeper | _____ |
| | | | Attest | _____ |
| 8. | | | Keeper | _____ |
| | | | Attest | _____ |
| 9. | | | Keeper | _____ |
| | | | Attest | _____ |
| 10. | | | Keeper | _____ |
| | | | Attest | _____ |