

UNITED STATES DEPARTMENT OF THE INTERIOR
NATIONAL PARK SERVICE

**NATIONAL REGISTER OF HISTORIC PLACES
PROPERTY PHOTOGRAPH FORM**

FOR NPS USE ONLY

RECEIVED FEB 6 1979

DATE ENTERED

APR 13 1979

SEE INSTRUCTIONS IN *HOW TO COMPLETE NATIONAL REGISTER FORMS*
TYPE ALL ENTRIES ENCLOSE WITH PHOTOGRAPH

1 NAME

HISTORIC

Chris Jorgenson's Studio

AND/OR COMMON

Jorgenson's Studio

2 LOCATION

Yosemite Nat'l pk, Wawona

CITY, TOWN

VICINITY OF

COUNTY

STATE

Pioneer Yosemite History Center

Mariposa

California

3 PHOTO REFERENCE

PHOTO CREDIT Dean Shenk

DATE OF PHOTO 10/75

National Park Service

NEGATIVE FILED AT

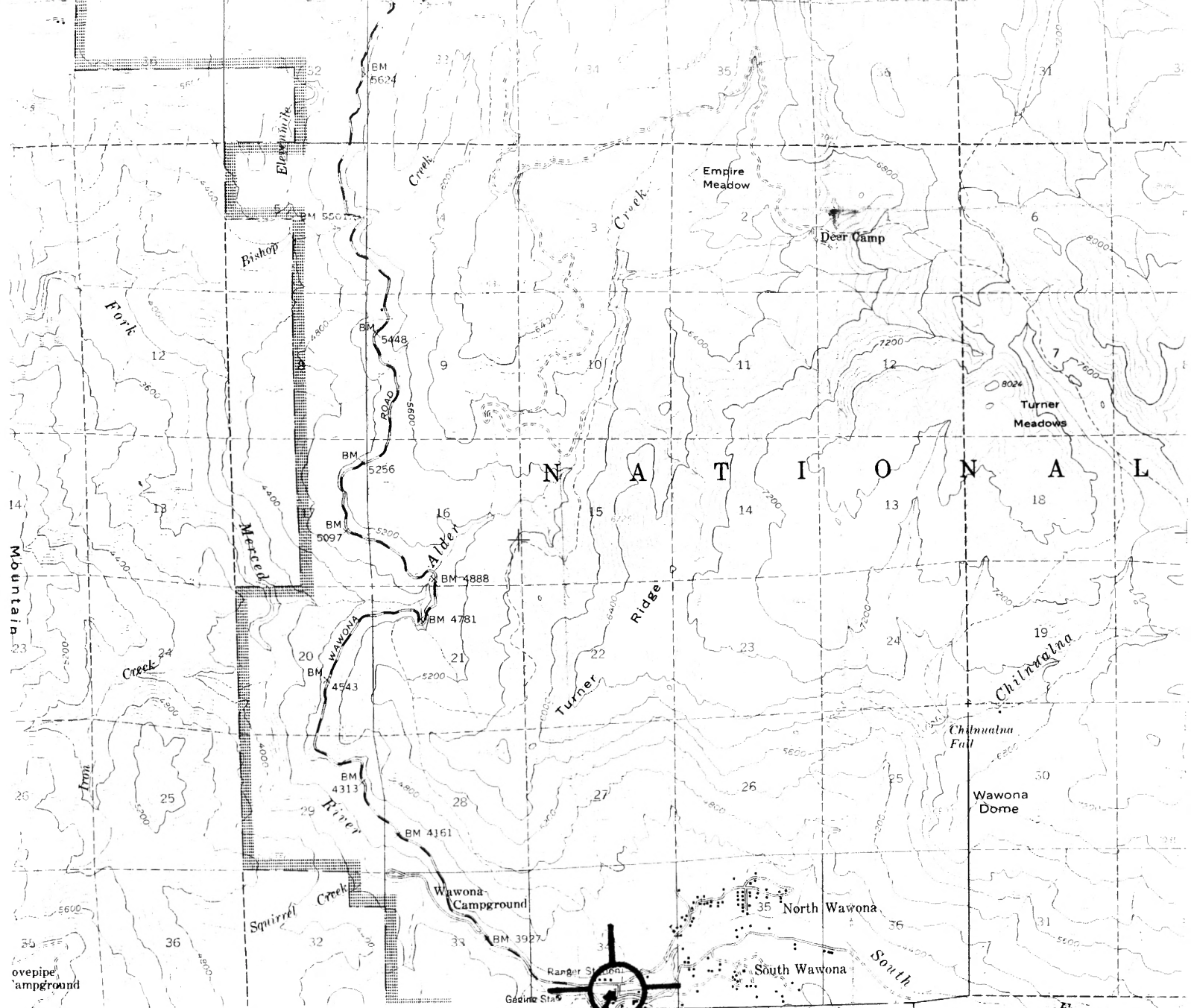
Western Regional Office, NPS, 450 Golden Gate Ave, Box 36063, San Francisco, CA

4 IDENTIFICATION

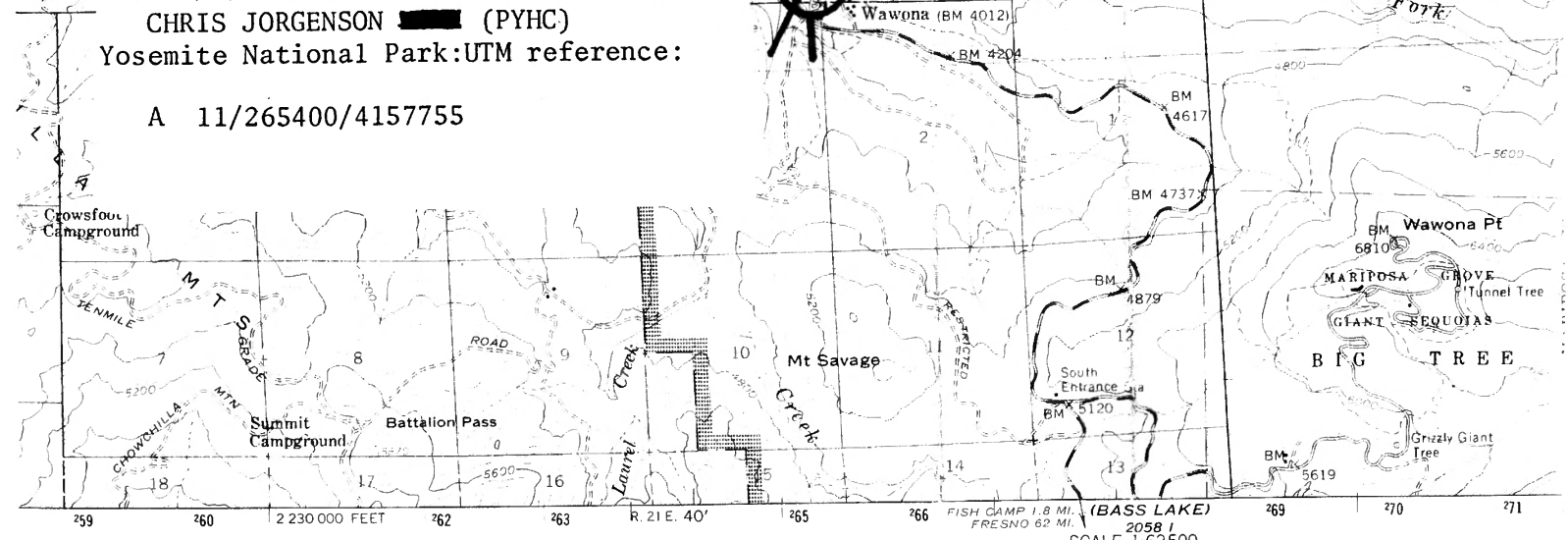
DESCRIBE VIEW, DIRECTION, ETC. IF DISTRICT, GIVE BUILDING NAME & STREET

PHOTO NO.

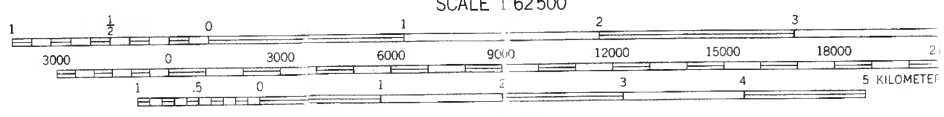
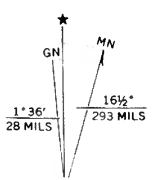
Chris Jorgenson Studio South and East sides



CHRIS JORGENSON (PYHC)
 Yosemite National Park: UTM reference:
 A 11/265400/4157755



Published by the Geological Survey
 & G.S.
 Photographs by photogrammetric methods
 955 Advance field check 1956
 27 North American datum
 California coordinate system, zone 3
 inverse Mercator grid ticks,



CONTOUR INTERVAL 80 FEET
 NATIONAL GEODETIC VERTICAL DATUM OF 1929