

TENNESSEE MULTIPLE PROPERTY FORM

Title: Historic Resources of Paris, TennesseeCounty: HenryHistoric Name: Jernigan, Thomas P., House (Site # 4)Common Name: Jernigan HeightsClassification BuildingOwner: Mrs. William Crosswy, 918 Dunlap Street, Paris, Tennessee 38262Location: 918 Dunlap Street, Paris, Tennessee

<u>Contributing:</u>		<u>Non-Contributing</u>	
Buildings	1	Buildings	2
Structures	0	Structures	0
Sites	0	Sites	0
<u>Total:</u>	1	<u>Total:</u>	2

Description:

The Thomas P. Jernigan House is a two-story frame, three bay, Neo-Classical style residence built ca.1905. On the main (east) facade is a two-story portico with paired Ionic columns on brick piers with capitals of terra cotta. Across the width of this facade is a one-story porch with Ionic columns on brick piers with a square baluster railing. At the porch eaves are dentils. On the second story of the portico is a balcony with square balusters. The main entrance has an original six-panel door and leaded glass sidelights and elliptical transom. On the central bay of the second story is a six-panel door and single-light transom.

In the portico gable field is a round attic window with keystone and corner blocks. The house has a hipped roof, weatherboard siding, and 1/1 sash windows. The house rests on a brick foundation and has an interior brick chimney. On the north, south and west facades are hipped roof dormers with paired single-light casement windows. On the north facade is a one-story bay window with diamond-shaped lights. At the rear (west) facade is a one-story frame wing and a ca.1950 frame addition with a brick chimney.

The interior was designed in a central hall plan and retains original woodwork, Colonial design mantles and staircase according to the owner. The interior was not accessible. The outbuildings consist of a two-story frame garage built ca.1920 with weatherboard siding and 4/4 sash windows and a ca.1920 one-story frame playhouse with four-light casement windows, a six-panel door, and a small porch with milled posts. Both buildings are non-contributing.

Period of Significance: ca. 1905Area of Significance: ArchitectureCriterion: CArchitect/Builder: Unknown

Statement of Significance:

The Thomas P. Jernigan House is a notable example of a Neo-Classical style residence in Paris. The house was constructed ca. 1905 on a large tract of land owned by Thomas P. Jernigan. Upon completion the house was a good example of the Neo-Classical style featuring a large two-story Ionic portico on the main facade and classical detailing on the porch and eaves. Alterations to the house have been minimal and confined to the rear facade. The house is one of the best remaining examples of this style in Paris and is similar in size, scale and extent of decoration with the H.L. Bruce House (Site #5) and the Charles M. White House (Site # 1).

Jernigan was a wealthy investor and banker who became wealthy from the E.W. Grove medicine companies. Jernigan originally planned to build on the high point in the northwest section of his property but Dr. Grove persuaded Jernigan to donate this piece of his property for the location of the Grove High School. The construction of the house then took place on Dunlap Street at the bottom of the hill. The house built by Jernigan was a good example of the Neo-Classical style with a large Ionic portico and interior and exterior classical detailing. During the early 1900s Jernigan resided at the home and served a director and vice-president of the First National Bank.

The house remained in the Jernigan family until 1969 and the present owner purchased the house in 1972. Alterations and changes to the house have been restricted to small one-story additions on the rear facade and the house retains its original design and character. The house is one of the best preserved examples of the Neo-Classical style in Paris.

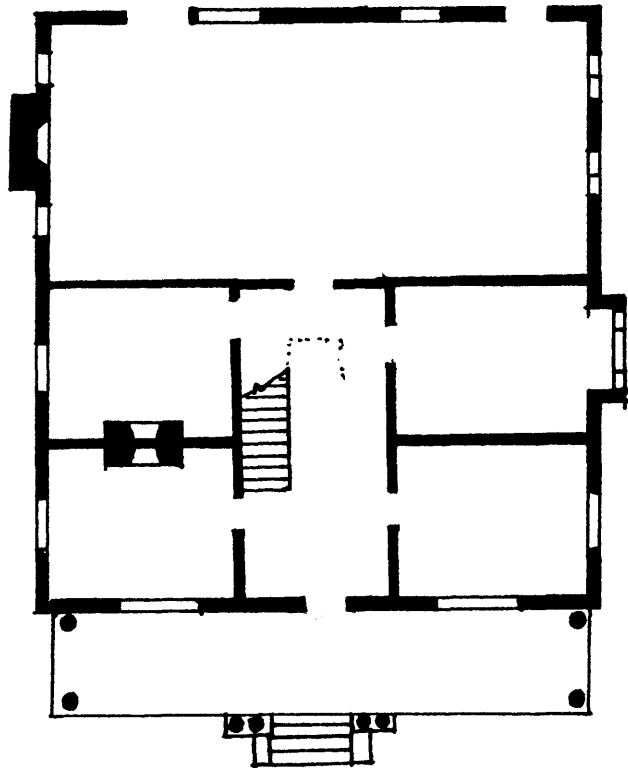
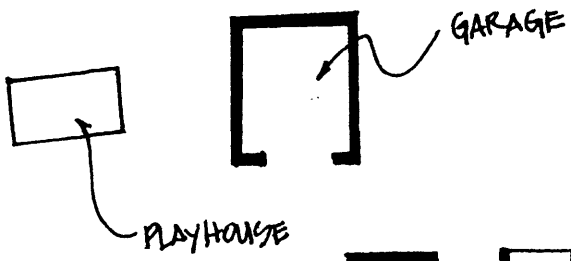
Acreage: 1.06 acres.

UTM References: Paris Quad/16/380910/4016810

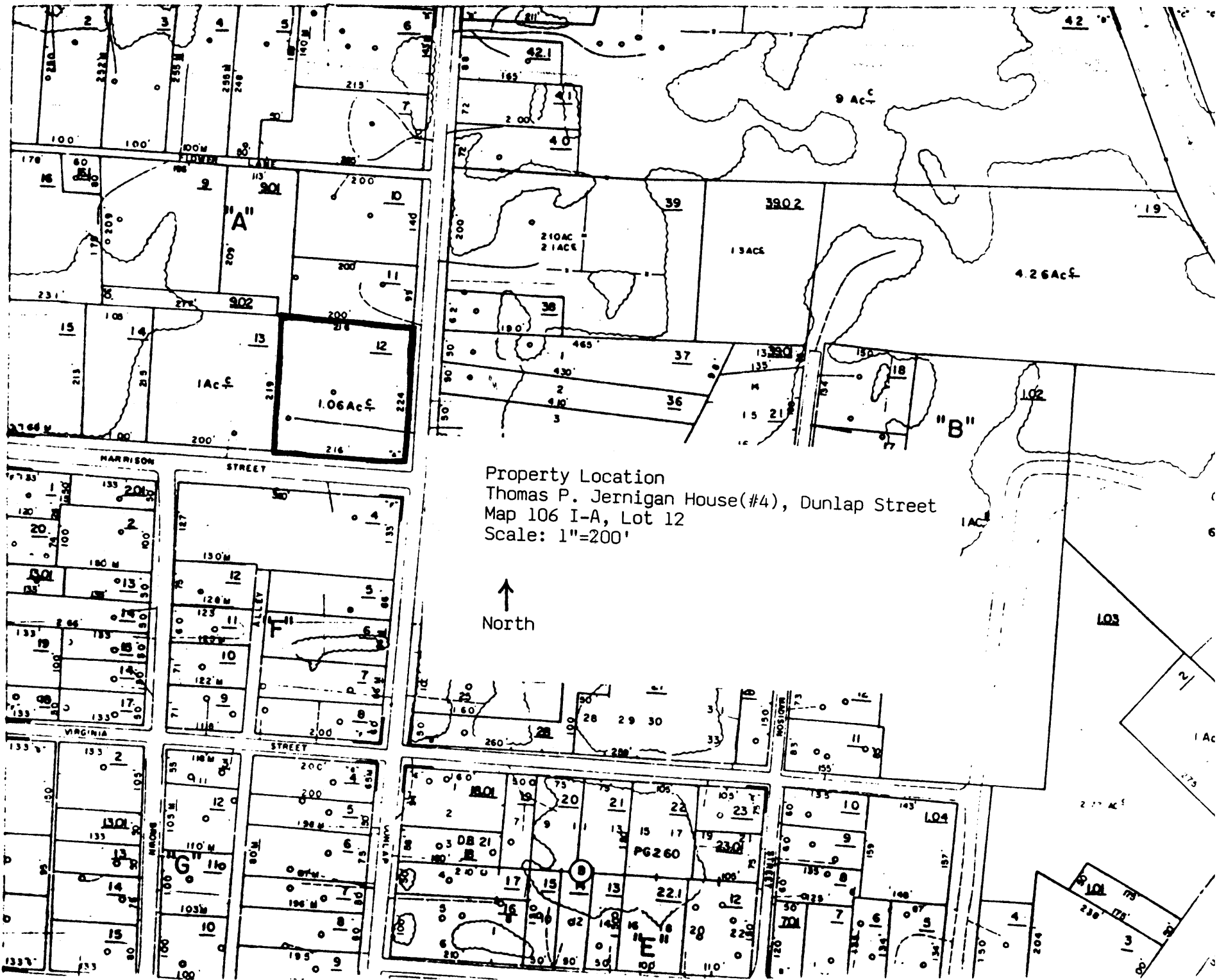
Verbal Boundary Description and Justification: The boundary for the Thomas P. Jernigan House is illustrated on accompanying Henry County tax map # 106I, block A, lot 12. The boundary includes all property presently associated with the Jernigan House. The boundary includes sufficient property to protect the historical setting of the site.

Supplemental Bibliographical References:

THOMAS P. JERNIGAN HOUSE - #4



↑
N



Property Location
Thomas P. Jernigan House(#4), Dunlap Street
Map 106 I-A, Lot 12
Scale: 1"=200'

↑
North