

United States Department of the Interior
National Park Service

1147

National Register of Historic Places Registration Form

This form is for use in nominating or requesting determinations for individual properties and districts. See instructions in *How to Complete the National Register of Historic Places Registration Form* (National Register Bulletin 16A). Complete each item by marking "x" in the appropriate box or by entering the information requested. If an item does not apply to the property being documented, enter "N/A" for "not applicable." For functions, architectural classification, materials, and areas of significance, enter only categories and subcategories from the instructions. Place additional entries and narrative items on continuation sheets (NPS Form 10-900a). Use a typewriter, word processor, or computer, to complete all items.

1. Name of Property

historic name Waldo Mine

other names/site number N/A

2. Location

street & number Near (south and west) of the intersection of not for publication
Waldo Road and BLM Road 40-8-28

city or town Cave Junction (USDI BLM Medford District) vicinity

state Oregon code OR county Josephine code 033 zip code 97523

3. State/Federal Agency Certification

As the designated authority under the National Historic Preservation Act, as amended, I hereby certify that this nomination request for determination of eligibility meets the documentation standards for registering properties in the National Register of Historic Places and meets the procedural and professional requirements set forth in 36 CFR Part 60. In my opinion, the property meets does not meet the National Register criteria. I recommend that this property be considered significant nationally statewide locally. (See continuation sheet for additional comments.)

[Signature] John G. Douglas 8/14/01
Signature of certifying official/Title Date

Preservation Officer, Bureau of Land Management
State of Federal agency and bureau

In my opinion, the property meets does not meet the National Register criteria. (See continuation sheet for additional comments.)

[Signature] 12/19/00
Signature of certifying official/Title Deputy SHPO Date

Oregon State Historic Preservation Office
State or Federal agency and bureau

4. National Park Service Certification

I hereby certify that the property is:

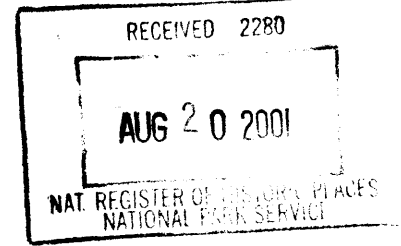
- entered in the National Register.
 See continuation sheet.
- determined eligible for the National Register
 See continuation sheet.
- determined not eligible for the National Register.
- removed from the National Register.
- other, (explain): _____

Signature of the Keeper

Date of Action

Entered in the 10.4.01
National Register

United States Department of the Interior
National Park Service



National Register of Historic Places Registration Form

This form is for use in nominating or requesting determinations for individual properties and districts. See instructions in *How to Complete the National Register of Historic Places Registration Form* (National Register Bulletin 16A). Complete each item by marking "x" in the appropriate box or by entering the information requested. If an item does not apply to the property being documented, enter "N/A" for "not applicable." For functions, architectural classification, materials, and areas of significance, enter only categories and subcategories from the instructions. Place additional entries and narrative items on continuation sheets (NPS Form 10-900a). Use a typewriter, word processor, or computer, to complete all items.

1. Name of Property

historic name Waldo Mine

other names/site number N/A

2. Location

street & number Near (south and west) of the intersection of Waldo Road and BLM Road 40-8-28 not for publication

city or town Cave Junction (USDI BLM Medford District) vicinity

state Oregon code OR county Josephine code 033 zip code 97523

3. State/Federal Agency Certification

As the designated authority under the National Historic Preservation Act, as amended, I hereby certify that this nomination request for determination of eligibility meets the documentation standards for registering properties in the National Register of Historic Places and meets the procedural and professional requirements set forth in 36 CFR Part 60. In my opinion, the property meets does not meet the National Register criteria. I recommend that this property be considered significant nationally statewide locally. (See continuation sheet for additional comments.)

Signature of certifying official/Title _____ Date _____

State of Federal agency and bureau _____

In my opinion, the property meets does not meet the National Register criteria. (See continuation sheet for additional comments.)

Signature of certifying official/Title _____ Date _____

State or Federal agency and bureau _____

4. National Park Service Certification

I hereby certify that the property is:

Signature of the Keeper

Date of Action

- entered in the National Register.
 - See continuation sheet.
- determined eligible for the National Register
 - See continuation sheet.
- determined not eligible for the National Register.
- removed from the National Register.
- other, (explain:) _____

Name of Property

County and State

5. Classification

Ownership of Property

(Check as many boxes as apply)

- private
- public-local
- public-State
- public-Federal

Category of Property

(Check only one box)

- building(s)
- district
- site
- structure
- object

Number of Resources within Property

(Do not include previously listed resources in the count.)

Contributing	Noncontributing	
		buildings
1		sites
6		structures
		objects
7		Total

Name of related multiple property listing

(Enter "N/A" if property is not part of a multiple property listing.)

Number of contributing resources previously listed in the National Register

Mining Resources of the Upper Illinois Valley Oregon 0

6. Function or Use

Historic Functions

(Enter categories from instructions)

INDUSTRY/PROCESSING/EXTRACTION

Current Functions

(Enter categories from instructions)

VACANT/NOT IN USE

7. Description

Architectural Classification

(Enter categories from instructions)

NO STYLE

Materials

(Enter categories from instructions)

foundation _____

walls _____

roof _____

other EARTH ; STONE _____

Narrative Description

(Describe the historic and current condition of the property on one or more continuation sheets.)

Please See Continuation Sheets

Waldo Mine

Name of Property

Josephine

Oregon

County and State

8. Statement of Significance

Applicable National Register Criteria

(Mark "x" in one or more boxes for the criteria qualifying the property for National Register listing.)

- A Property is associated with events that have made a significant contribution to the broad patterns of our history.
B Property is associated with the lives of persons significant in our past.
C Property embodies the distinctive characteristics of a type, period, or method of construction or represents the work of a master, or possesses high artistic values, or represents a significant and distinguishable entity whose components lack individual distinction.
D Property has yielded, or is likely to yield, information important in prehistory or history.

Criteria Considerations

(Mark "x" in all the boxes that apply.)

Property is:

- A owned by a religious institution or used for religious purposes.
B removed from its original location.
C a birthplace or grave.
D a cemetery.
E a reconstructed building, object, or structure.
F a commemorative property.
G less than 50 years of age or achieved significance within the past 50 years.

Areas of Significance

(Enter categories from instructions)

INDUSTRY

Period of Significance

1930-1939

Significant Dates

N/A

Significant Person

(Complete if Criterion B is marked above)

N/A

Cultural Affiliation

N/A

Architect/Builder

N/A

Narrative Statement of Significance

(Explain the significance of the property on one or more continuation sheets.)

9. Major Bibliographical References

Bibliography

(Cite the books, articles, and other sources used in preparing this form on one or more continuation sheets.)

Previous documentation on file (NPS):

- preliminary determination of individual listing (36 CFR 67) has been requested
previously listed in the National Register
previously determined eligible by the National Register
designated a National Historic Landmark
recorded by Historic American Buildings Survey
recorded by Historic American Engineering Record

Primary location of additional data:

- State Historic Preservation Office
Other State agency
Federal agency
Local government
University
Other

Name of repository:

USDI BLM Medford District

Waldo Mine

Josephine Oregon

Name of Property

County and State

10. Geographical Data

Acreage of Property 70.184

UTM References

(Place additional UTM references on a continuation sheet.)

UTM grid 1: Zone, Easting, Northing

UTM grid 3: Zone, Easting, Northing

UTM grid 2: Zone, Easting, Northing

UTM grid 4: Zone, Easting, Northing

See continuation sheet

Verbal Boundary Description

(Describe the boundaries of the property on a continuation sheet.)

Boundary Justification

(Explain why the boundaries were selected on a continuation sheet.)

11. Form Prepared By

name/title Katherine C. Atwood with Dr. Ward Tonsfeldt
organization (for)USDI Bureau of Land Management date August 19, 2000
street & number 365 Holly Street telephone (541) 482-8714
city or town Ashland state OR zip code 97520

Additional Documentation

Submit the following items with the completed form:

Continuation Sheets

Maps

- A USGS map (7.5 or 15 minute series) indicating the property's location.
A Sketch map for historic districts and properties having large acreage or numerous resources.

Photographs

Representative black and white photographs of the property.

Additional items

(Check with the SHPO or FPO for any additional items)

Property Owner

(Complete this item at the request of SHPO or FPO.)

name Please See Continuation Sheet
street & number telephone
city or town state zip code

Paperwork Reduction Act Statement: This information is being collected for applications to the National Register of Historic Places to nominate properties for listing or determine eligibility for listing, to list properties, and to amend existing listings. Response to this request is required to obtain a benefit in accordance with the National Historic Preservation Act, as amended (16 U.S.C. 470 et seq.).

Estimated Burden Statement: Public reporting burden for this form is estimated to average 18.1 hours per response including time for reviewing instructions, gathering and maintaining data, and completing and reviewing the form. Direct comments regarding this burden estimate or any aspect of this form to the Chief, Administrative Services Division, National Park Service, P.O. Box 37127, Washington, DC 20013-7127; and the Office of Management and Budget, Paperwork Reductions Projects (1024-0018), Washington, DC 20503.

United States Department of the Interior
National Park Service

National Register of Historic Places
Continuation Sheet

Mining Resources of the Upper Illinois Valley
Waldo Mine

Section Number: 7 Page: 1

Summary Description

The Waldo Mine contains earthworks associated with gold mining during the 1880s as well as areas that reflect Depression-era hydraulic mining. The mine's largest developed area contains workings of 1937 to 1939 when Gold Operators Inc. used hydraulic giants to systematically rework old tailings, using water from the Middle Ditch. The Waldo Mine provides an excellent example of mining technologies of the period and displays earthworks that reveal the gold extraction process. The Waldo Mine site retains integrity of location, design, setting, workmanship and feeling, and accurately conveys the historic associations for which it is significant.

Location and Setting

The Waldo Mine, 70.184 acres in size, is located approximately seven miles south of Cave Junction, near the former site of Waldo in all four quarters of Section 28, Township 40 South, Range 8 West, (W.M.) (Josephine County Assessors Plat 40-8-28, Tax Lot 100). The mine is situated between 1,470 and 1,560 feet above sea level on an arm of Fry Gulch that feeds into the West Fork of the Illinois River. The property is accessible by Waldo Road near its intersection with BLM Road 40-8-28. The site is bounded on the north by an extension of the Wimer Ditch, on the northeast by BLM Road 40-8-28, on the east and west by private land, and on the south by a ditch. Gravels from placer mining debris extend across most of the Waldo Mine site. These tailings are remains from washed gravels derived primarily from eroded and resorted Tertiary conglomerate (Shenon 1933:Plate 11; Budy 1999: 35HS11-481).

The Waldo Mine is located in a mixed conifer/ oak woodland zone with an on-site plant community of Douglas fir, white and black oak, poison oak. It contains a semi-barren areas of sparse ponderosa pine/manzanita or buckbrush on serpentine exposures and riparian shrubs where water collects along mining ponds and hydraulic mining channels. Areas of hydraulic mining in the late 1930s are largely devoid of vegetation. Water for the hydraulic operations at the Waldo Mine came initially from natural runoff through an arm of Fry Gulch but later came from the East Fork Illinois River through both the Logan/Esterly Upper (1854) and Middle (1852) ditches, carrying the water for as much as fifteen miles. In the latest 1937-1939 hydraulic era, the Logan/ Esterly Middle Ditch served as the primary source of water.

United States Department of the Interior
National Park Service

National Register of Historic Places
Continuation Sheet

Mining Resources of the Upper Illinois Valley

Waldo Mine

Section Number: 7 Page: 2

Site Description

Earthworks of the Waldo Mine date primarily from the 1937-1939 hydraulic era. "Little Waldo Pond," a small **hydraulic pit (B)** approximately 150 feet in diameter, now a water-filled pond, was excavated during the 1930s hydraulic era. The area surrounding the pond is characterized by barren **tailings piles (B1)** derived from the pit's excavation. A mined area (C), approximately 500 by 1000 feet in size, was washed to bedrock during the 1930s.

A huge pile of **tailings (D)** measuring approximately 500 feet across, surrounds "Big Waldo Pond," the large **hydraulic pit (E)**. The tailings reflect the enormous amount of material removed from the large pit using hydraulic elevators and giants. "Big Waldo Pond" is a large, oval-shaped pit measuring approximately 250 by 150 feet in size that was created during the 1930s era using elevators and giants. A central **cut (F)** is the site of intensive hydraulicking from the 1937-1939 operation. Approximately 750 feet in length and 300 feet in width, this cut is apparently the original channel for the gold bearing arm of Fry Gulch and has been excavated to a depth of from fifteen to twenty-five feet below the surrounding ground surface. Big Waldo Pond is located on the west end of this subsurface excavation. The south edge of the cut is a hydraulic mine face about thirty feet deep. In addition to being worked for its gold, the center of the cut also served as the **tailrace (F1)** for hydraulic operations to the north and east. A vertical pipeline channel links the pond feature and hydraulic mine face to a series of ditches located on slopes above the workings (Budy 1999:35HS11-481).

Integrity

Traces of early placer workings between 1852 and 1900 on this site were removed by hydraulic mining between 1937 and 1939. Earthworks from the Depression era, however, are well preserved (Budy 1999: 35HS11-481). The Waldo Mine contains clear and abundant evidence of the industrial hydraulic era and the mining technology used from 1937 to 1939. The Waldo Mine is a distinct and important representative of mining development in the Upper Illinois Valley.

**United States Department of the Interior
National Park Service**

**National Register of Historic Places
Continuation Sheet**

Mining Resources of the Upper Illinois Valley
Waldo Mine

Section Number: 8 **Page:** 1

Significance

The Waldo Mine, developed early in the historic period but currently representing hydraulic mining operations between 1937 and 1939, is locally significant for its association with mining development in the Upper Illinois Valley, Waldo vicinity. Submitted as part of a multiple property submission, "Mining Resources of the Upper Illinois Valley, Oregon," the Waldo Mine represents its associated historic context, "Gold Placer Mining and Development of the Waldo Vicinity, 1851-1942." The Waldo Mine meets the registration requirements outlined for mines of the industrial hydraulic era in the registration document. With its major extant components created between 1937 and 1939, the Waldo Mine was developed in the historic period. The mine retains its integrity of location, setting, design and feeling and evokes direct historic associations with mining in the Upper Illinois Valley. The Waldo Mine is eligible to the National Register of Historic Places under Criterion A as an important, tangible representative of historic mining activities in the Waldo vicinity.

History

The town of Waldo prospered throughout the initial mining boom and retained residents and services throughout the early years of the twentieth century. After World War I and consolidation of mining interests locally to a few large companies, the town faded. In 1928, only a few buildings remained, "...all is an atmosphere of quiet for Waldo has gone the way of many other mining towns." (Grants Pass Courier, December 12, 1928). That year the post office discontinued service and in subsequent years only a few residents remained. Within the next decade the town disappeared as miners scoured for gold.

Between 1937 and 1939, the Waldo Mine tailings, which represented the residue of older, inefficient sluicing methods, were reworked with hydraulic giants using water under high pressure taken from the Logan/Esterly Middle Ditch. The old tailings left on the surface were systematically processed using hydraulic power. During these years, the structures remaining at the townsite of Waldo were washed away (Stout 1967: cited in Hill 1976:78-79; Budy 1999: 35HS11-481)

United States Department of the Interior
National Park Service

National Register of Historic Places
Continuation Sheet

Mining Resources of the Upper Illinois Valley
Waldo Mine

Section Number: 8 Page: 2

In 1937 a Grants Pass newspaper related some history of the Waldo Mine:

The Waldo mine, including the pioneer claims that were discovered and worked in 1852, has been operated continuously for 85 years. At present it is producing under management of Fred Galeno, engineer. One of the early owners was William Bybee of Jackson County who later sold it to F.H. Osgood. The property was known as the Osgood Mine for many years. In 1912 it was leased by J.T. Logan and C.D. Cameron who worked it until 1917. Then sold to the General Metals Company of London on a contract basis, and when payments ceased in 1922, ownership returned to Osgood, who leased the property to Cameron again for two years. Logan and Cameron bought the mine and operated one month before selling to the Plataurica Company, who were operators until recently when it was sold to the present owners...(*Grants Pass Bulletin*, January 29, 1937 2:6-7).

C.R. Stout, mining engineer for the Gold Operators, Inc. of New York, owners of the Waldo Mine, stated that prior to the 1930s re-workings, "the bottom of the gulch at the Waldo location had been previously mined by 'sluicing' which left tailings covering the area two to three feet deep"(Stout 1967; cited in Hill 1976:78). The old tailings provided good opportunities to recover considerable gold that had previously been missed:

We decided to mine these old tailings with hydraulic giants using the moderate water head available from our "middle" ditch. This operation was started in the Fall of 1937 and continued through the Spring of 1939 and included an area extending approximately half a mile west of Waldo upstream to a point approximately one-quarter mile east of Waldo.

There was one island of virgin ground left east of Waldo and it was reported that this ground had been left by the earlier miners due to a grave located at this spot. However, we mined this island along with the rest of the tailings and found nothing to indicate a

**United States Department of the Interior
National Park Service**

**National Register of Historic Places
Continuation Sheet**

Mining Resources of the Upper Illinois Valley
Waldo Mine

Section Number: 8 **Page:** 3

grave or anything else at this location...[At Waldo] a few of the old frame buildings were demolished in the mining operation (Stout 1967; cited in Hill 1976:78).

In a 1942 publication geologists briefly note the existence of the Waldo Placer in Section 28, Township 40 South, Range 8, stating that at the time it was operated by Fred Galeno (Oregon Department of Geology and Mineral Industries: 1942: 223).

**United States Department of the Interior
National Park Service**

**National Register of Historic Places
Continuation Sheet**

Mining Resources of the Upper Illinois Valley
Waldo Mine

Section Number: 9 **Page:** 1

Bibliography

Budy, Elizabeth E.

1999 *Waldo Mine* Cultural Site Record 35HS11-481 (for USDI-
BLM Medford District)

(DOGAMI) Oregon Department of Geology and Mineral Industries

1942 *Oregon Metal Mines Handbook, Bulletin 14-C Southwestern
Oregon*, Volume 2, Section 1 [Josephine County], Portland, Oregon.

Hill, Edna May

1976 *Josephine County Historical Highlights I*. Josephine County Library
System and Josephine County Historical Society, Grants Pass, Oregon.

Shenon, Philip J.

1933c *Geology and Ore Deposits of the Takilma-Waldo District, Oregon,
Including the Blue Creek District*. U.S. Geological Survey Bulletin 846-B
Government Printing Office, Washington D.C.

**United States Department of the Interior
National Park Service**

**National Register of Historic Places
Continuation Sheet**

Mining Resources of the Upper Illinois Valley
Waldo Mine

Section Number: 10 **Page:** 1

A map showing locations of the twenty resources included in this Multiple Property Submission is contained with the cover document. A photocopied section of the USGS map indicating the location of the Waldo Mine accompanies the nomination document.

Boundary Description

The Waldo Mine is located in the northeast, northwest, southeast and southwest quarters of Section 28, Township 40 South, Range 8 West, W.M. (Josephine County Assessors Plat 40-8-28, Tax Lot 100), in Josephine County Oregon. The property is identified on USGS map O'Brien quadrangle, 7.5 minute series, included with this nomination. The site is further described as follows:

Beginning in the NE $\frac{1}{4}$ of Section 28, T.40 S. R. 8W. W.M. at the point where the Waldo Road intersects the westerly boundary of Tax Lot 100, (as shown on Josephine County Assessor's Plat 40-8-18), continue south along the west boundary of Tax Lot 100 to the southwest corner of Tax Lot 400 in the SE $\frac{1}{4}$ of Section 28, T. 40 S. R. 8 W., W.M. Extend a line of convenience at 270 degrees west (approximately 1500 feet) to meet the eastern boundary of the Waldo and Waldo Chinese Cemeteries in the NE $\frac{1}{4}$ of the SW $\frac{1}{4}$ of Section 28, T. 40 S., R 8W., W.M. Continue north along the easterly boundary line of the Waldo and Waldo Chinese Cemeteries to this line's intersection with the Waldo Road, then proceed east along the Waldo Road to the point of beginning. The nominated area includes 70.184 acres.

Boundary Justification

The nominated area encompasses the major earthwork features associated with Depression-Era mining activity on the Waldo Mine that is contained on lands overseen by the USDI Bureau of Land Management.

**United States Department of the Interior
National Park Service**

**National Register of Historic Places
Continuation Sheet**

Mining Resources of the Upper Illinois Valley
Waldo Mine

Section Number: 10 **Page:** 2

UTM References

Zone	Location	Easting	Northing
10	1	446116.01577	4656736.70092
	2	446587.46201	4656471.13943
	3	446581.49433	4656017.59622
	4	446104.08043	4656014.61239

United States Department of the Interior
National Park Service

National Register of Historic Places
Continuation Sheet

Mining Resources of the Upper Illinois Valley
Waldo Mine

Section Number: Photographs Page: 2

Photograph No 4.

- 1) Waldo Mine
- 2) NE, NW, SE, SW ¼ (s) of S. 28, T. 40 S., R. 8 W., W.M. Josephine County, Oregon
- 3) Photographer: Elizabeth Budy
- 4) Date of Photograph:
- 5) Negative holder: Bureau of Land Management, Medford District
3040 Biddle Road Medford, Oregon 97504
- 6) View: Tailings, feature F
- 7) Photograph number: 4 of 7

Photograph No 5.

- 1) Waldo Mine
- 2) NE, NW, SE, SW ¼ (s) of S. 28, T. 40 S., R. 8 W., W.M. Josephine County, Oregon
- 3) Photographer: Elizabeth Budy
- 4) Date of Photograph:
- 5) Negative holder: Bureau of Land Management, Medford District
3040 Biddle Road Medford, Oregon 97504
- 6) View: Tailings, feature F
- 7) Photograph number: 5 of 7

Photograph No. 6

- 1) Waldo Mine
- 2) NE, NW, SE, SW ¼ (s) of S. 28, T. 40 S., R. 8 W., W.M. Josephine County, Oregon
- 3) Photographer: Elizabeth Budy
- 4) Date of Photograph:
- 5) Negative holder: Bureau of Land Management, Medford District
3040 Biddle Road Medford, Oregon 97504
- 6) View: Hydraulic cutface, Feature F
- 7) Photograph number: 6 of 7

**United States Department of the Interior
National Park Service**

**National Register of Historic Places
Continuation Sheet**

Mining Resources of the Upper Illinois Valley
Waldo Mine

Section Number: 11 **Page:** 1

Property Owner Notification

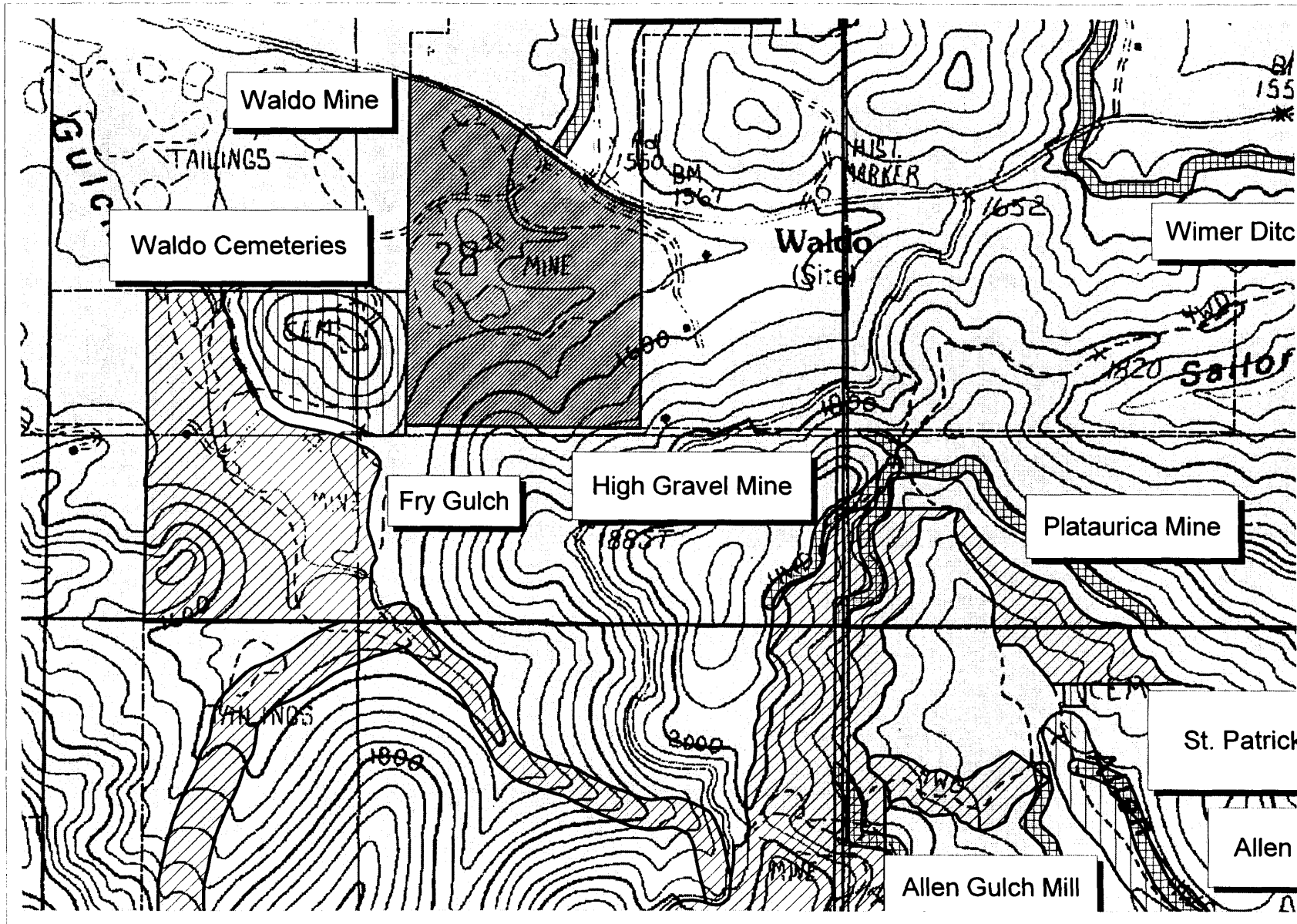
Bureau of Land Management
Ron Wenker, District Manager
Grants Pass Resource Area Manager
Ann Ramage, Archaeologist
Medford Field Office
3040 Biddle Road
Medford OR 97504

Oregon-Washington State Office
Bureau of Land Management
Elaine Zielinski, Director
Richard Hanes, Cultural Resource Lead
PO Box 2965
Portland OR 97208-2965

Federal Preservation Officer Certification

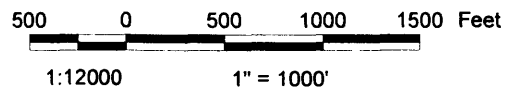
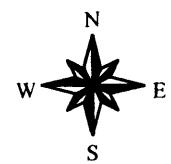
Mr. John G. Douglas, Preservation Officer
Bureau of Land Management (240)
204-LS
18th and C Streets, NW
Washington, DC 20240

Waldo Mine



Waldo Mine
 35HS11-481
 A portion of the
 O'Brien Quad
 (Sec 28
 T40S, R8W, wm)
 showing
 Historic Placer
 Mining Resources
 in the Waldo Vicinity.

- Mines**
- Allen Gulch Mill
 - Cameron Mine
 - Deep Gravel Mine
 - Esterly Pit #2
 - Fry Gulch
 - High Gravel Mine
 - Old Placer Mine
 - Plataurica Mine
 - Waldo Mine
- General Symbology**
- Ditches
 - Mines
 - Town, cemetery
 - BLM boundary
 - Section Lines

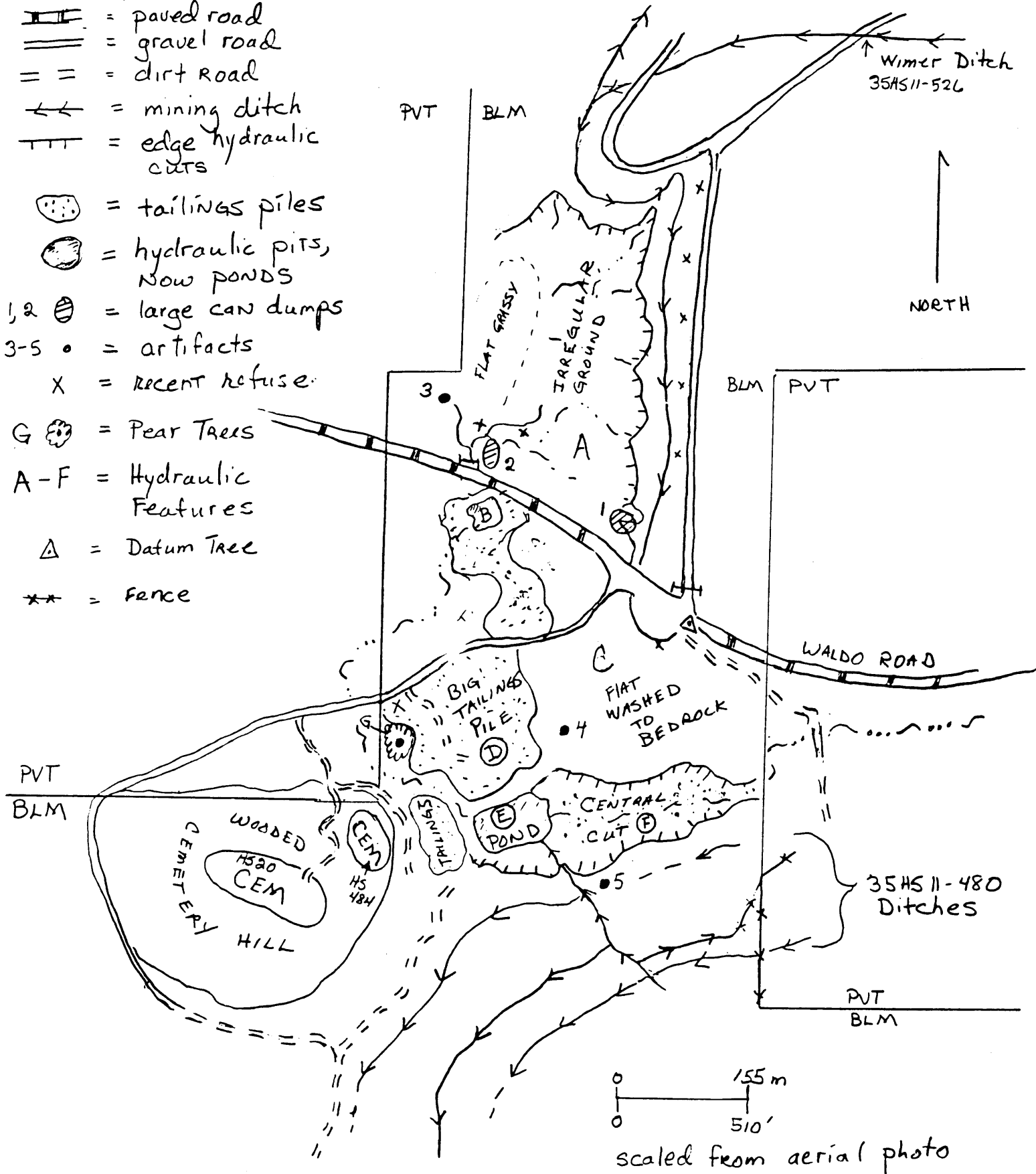


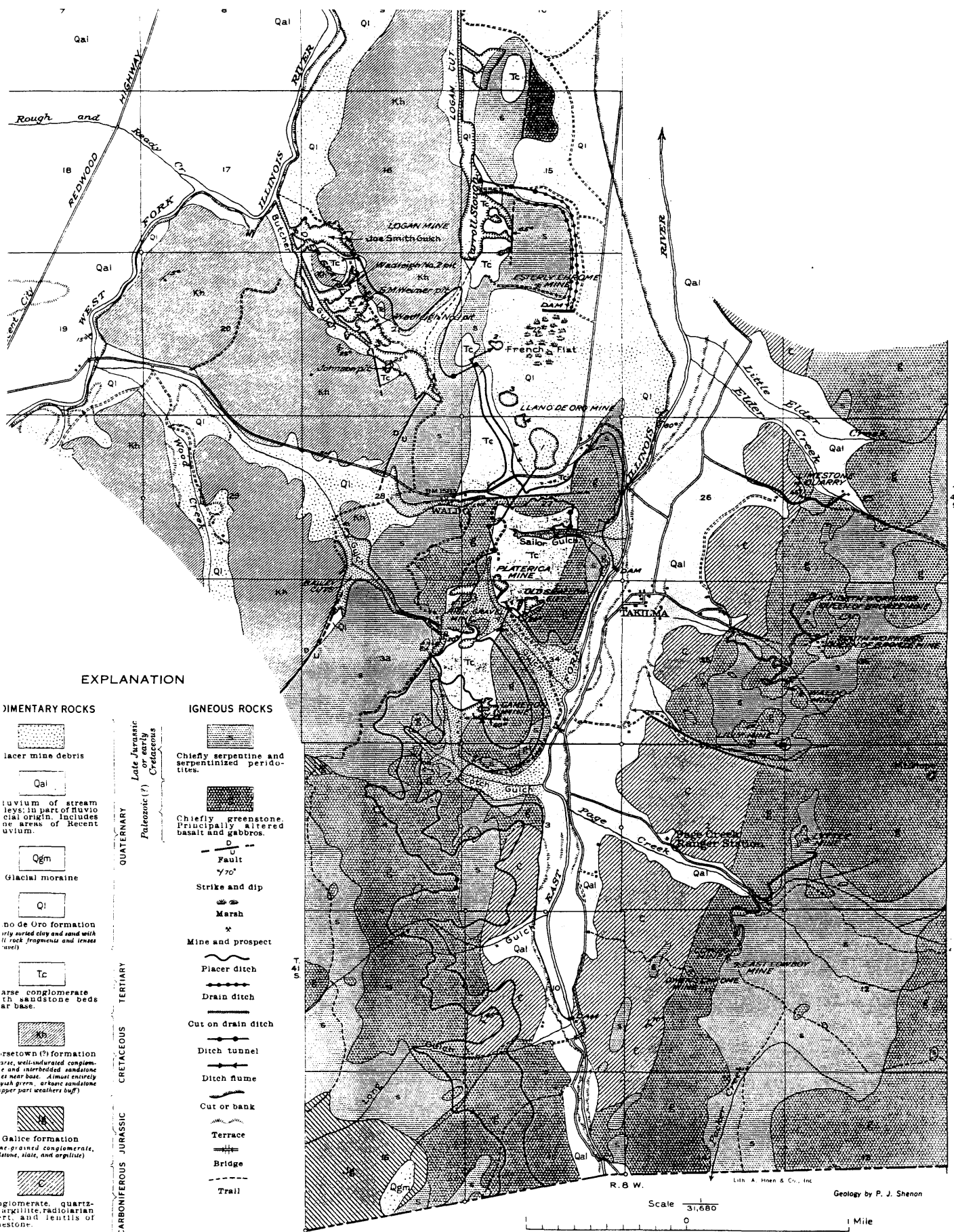
Map created August 2000 by Ralph Delamarter
 Features based on site investigations by W Tonsfeldt, E Budy and others
 Base images: digital raster graphs (DRG) and digital orthoquads (DOQ)(1995)
 of O'Brien, Takilma and Broken Rib quads (scale 1:24000).

Sketch MAP
 35HS11-481
 Waldo Mine
 Elizabeth Budy
 10/29/99

Key

- = paved road
- = gravel road
- = dirt road
- = mining ditch
- = edge hydraulic cuts
- = tailings piles
- = hydraulic pits, now ponds
- = large can dumps
- = artifacts
- = recent refuse
- = Pear Trees
- = Hydraulic Features
- = Datum Tree
- = Fence





GEOLOGIC MAP OF THE TAKILMA-WALDO DISTRICT, JOSEPHINE COUNTY, OREGON