



John D. Kennedy Elementary School
1915
5736 Ne 33rd
Portland, Multnomah Co. Oregon
Historic view. Used in the Ladies
Home Journal Article April 1916.
Oregon Historical Society Collection

West Elevation
Original portion.
(note one room
school house
behind current
building).

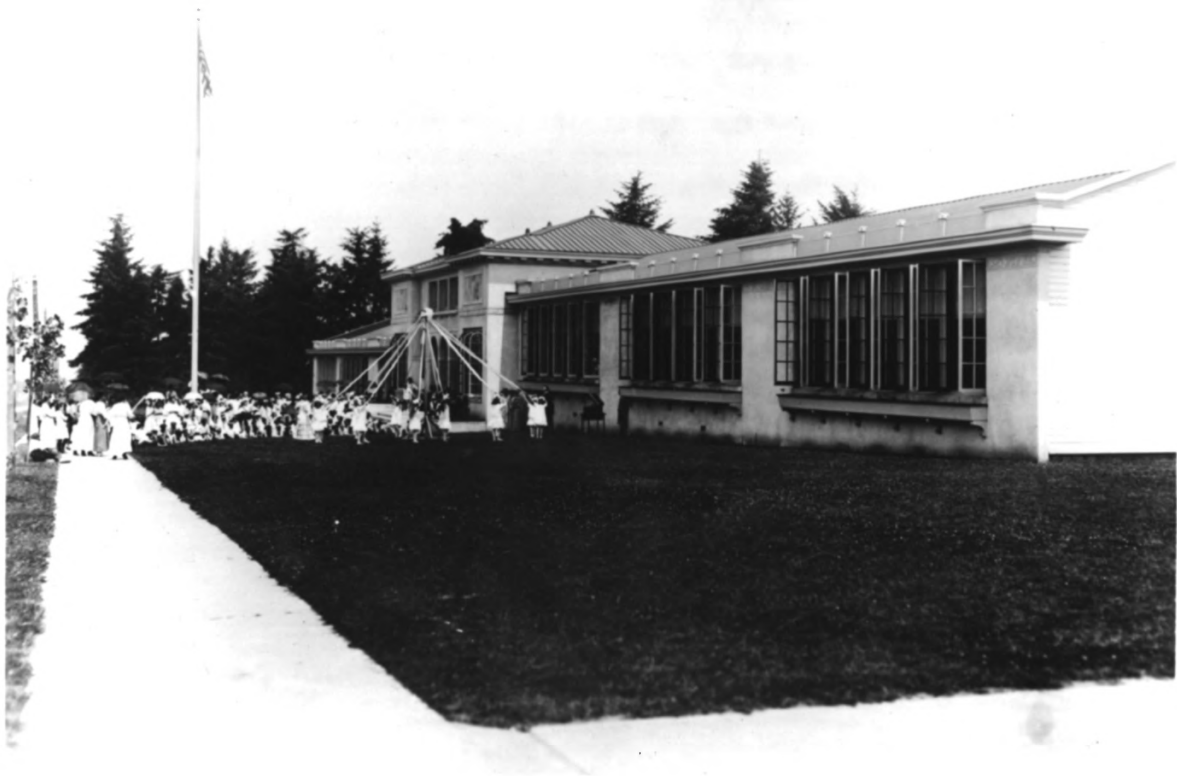
1 of 15

This photoprint is issued for reference use
only. It is not to be copied for resale.
Permission for use in a publication, film
or video production must be requested in
writing ~~from~~ the Photographs Librarian.

Photographs Department
Oregon Historical Society
1230 SW Park Avenue
Portland, Oregon 97205

NEGATIVE NUMBER ORHI 80966

8001
JUN 27 1988



John D. Kennedy Elementary School

1915

5736 Ne 33rd

2 OF 15

Portland, Multnomah County Oregon

Historic view; Dedication Ceremony

June 12, 1916.

Columbia Comm. Studio Photo.

Oregon Historical Society Collection
West Elevation.

This photoprint is issued for reference use only. It is not to be copied for resale. Permission for use in a publication, film or video production must be requested in writing from the Photographs Librarian.

Photographs Department
Oregon Historical Society
1230 SW Park Avenue
Portland, Oregon 97205

NEGATIVE NUMBER ORHI 80967



John D. Kennedy Elementary
School. 1915
5736 Ne 33rd
Portland, Multnomah
County, Oregon

Historic View

John D. Kennedy School. June 12, 1916.

dedication ceremony

3 of 5

Columbia Comm. Studio Photo.

This photoprint is issued for reference use only. It is not to be copied for resale. Permission for use in a publication, film or video production must be requested in writing from the Photographs Librarian.

69

Photographs Department
Oregon Historical Society
1230 SW Park Avenue
Portland, Oregon 97205

6241

NEGATIVE NUMBER ORHS 80964

JUN 27 1988



John D Kennedy Elementary School
5736 Ne 33rd, PORTLAND
MULTNOMAH COUNTY, OREGON
unknown photographer

John D. Kennedy School. June 12, 1916 west elevation
dedication ceremony # of 15

Columbia Comm. Studio Photo.

This photoprint is issued for reference use
only. It is not to be copied for resale.
Permission for use in a publication, film
or video production must be requested in
writing from the Photographs Librarian.

Photographs Department
Oregon Historical Society
1230 S.W. Park Avenue
Portland, Oregon 97205

NEGATIVE NUMBER ORHI 80965

6

5671



KENNEDY, JOHN D., ALAMANTARY SCHOOL (1915)
PORTLAND, MULTNOMAH COUNTY, OREGON.

John D. Kennedy . 5 of 15

Born Limerock, Ireland 1851.

Founded Kennedy Addition in NE
Portland.

Sold land to Portland School District
on which John D. Kennedy
school was built.

99 9

This ~~photo~~ print is issued for reference use
only. It is not to be copied for resale.
Permission for use in a publication, film
or video production must be requested in
writing from the Photographs Librarian.

Photography Department
Oregon Historical Society
1230 SW Park Avenue
Portland, Oregon 97205

NEGATIVE NUMBER ORHI 80963

JUN 27 1988



^{PLANNING}
J. D. Kennedy, School
5736 Ne 33rd

Portland, Multnomah County, Oregon

M. Darby photo
3327 Ne Simpson
Portland Ore 97211

Facade

6 of 15



KENNEDY ELEMENTARY SCHOOL

NE 33rd AV

^{Alameda}
J. D. Kennedy School

5736 NE 33rd

Portland, Multnomah County, Oregon

m. Darby photo

3327 NE Simpson

Portland Ore 97211

Facade

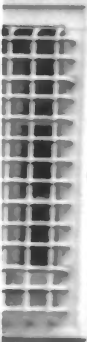
7 of 15

JUN 27 1988
8861 12 NPL

KENNEDY ELEMENTARY SCHOOL

5736

5736



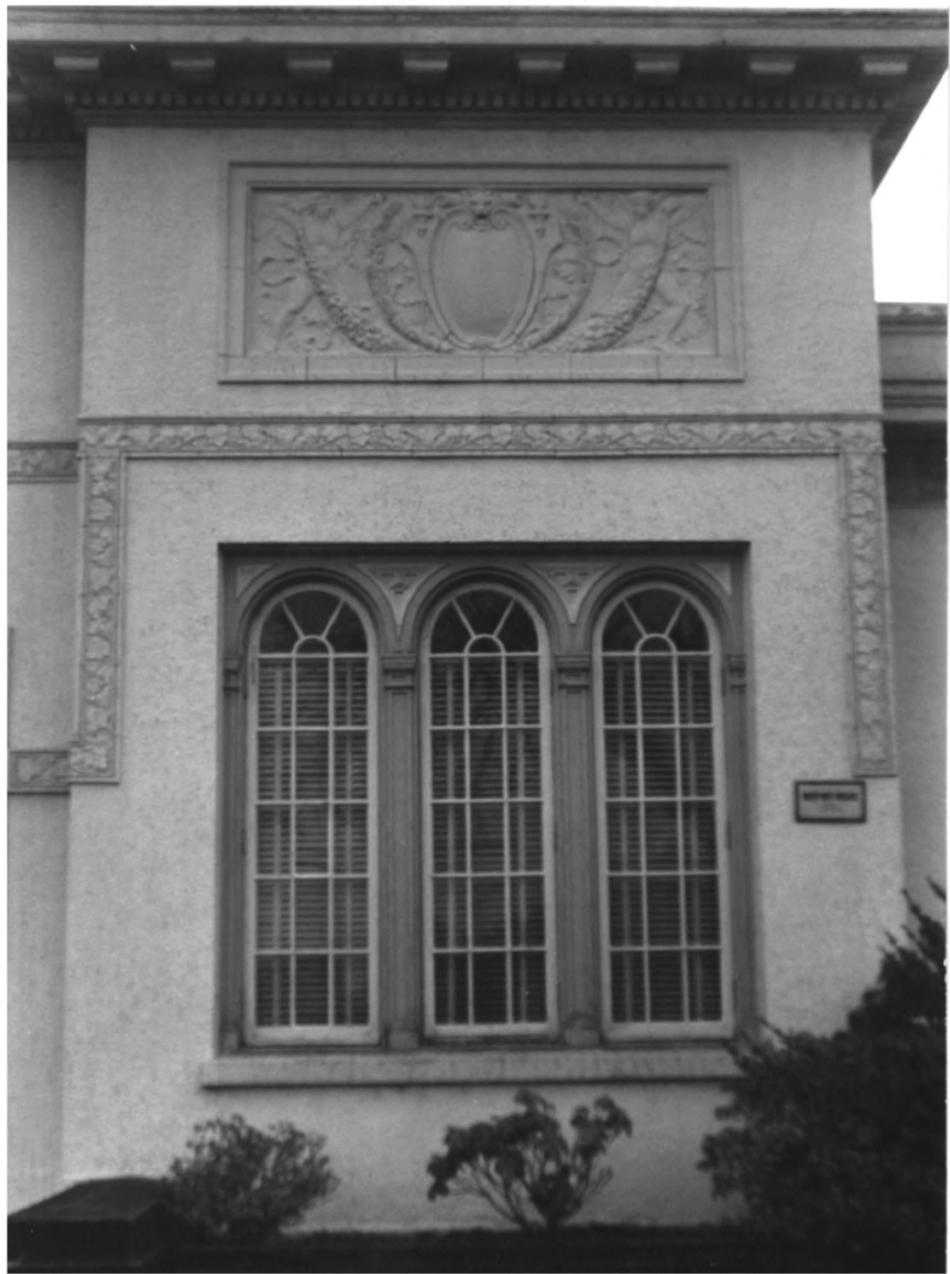
^{Elementary}
J. D. Kennedy, School
5736 NE 33rd

Portland, MULTNOMAH COUNTY, OREGON

M. DARBY photo
3327 NE SIMPSON
Portland Ore 97211

Entry Detail
8 of 15

JUN 27 1988
8861 12 NMP



^{Elementary}
J.D. Kennedy School

5736 Ne 33rd

Portland, Multnomah County, Oregon
Facade Detail

m. Darby photo

3327 Ne Simpson

Portland, 97211

9 of 15

JUN 27 1988



JUN 27 1987

J.D Kennedy, ^{ALUMINUM} school
5736 NE 33rd
Portland, MULTNOMAH COUNTY, OREGON

m. Darby photo
3327 NE SIMPS ON
PORTLAND ORE 97211
North Entrance
Detail 10 of 15



^{PLANNING}
J. D. Kennedy, School
5736 Ne 33rd

Portland, ^{MULTNOMAH COUNTY, OREGON}

m Darby photo

3327 Ne Simpson

Portland Ore 97211

S. Elevation

11 of 15

JUN 27 1988
EJMR



^{MULTNOMAH COUNTY}
J. D. Kennedy School

5736 NE 33rd

Portland, MULTNOMAH COUNTY, OREGON

nearby photo

3327 NE Simpson

Portland Ore 97211

N. Elevation
(Auditorium)

1206 15

JUN 28 1988
87 AM



J. D. Kennedy ^{Elementary} School
5736 NE 33rd

Portland, Multnomah County

M. D. R. by photo
3327 NE Simpson
Portland, Ore 97211

EAST Elevation

13 of 15

JUN 27 1982



Elementary

J.D. Kennedy School

5736 NE 33rd

Portland, Multnomah County, Oregon

NE corner of Building

Illustrating parapet of Auditorium

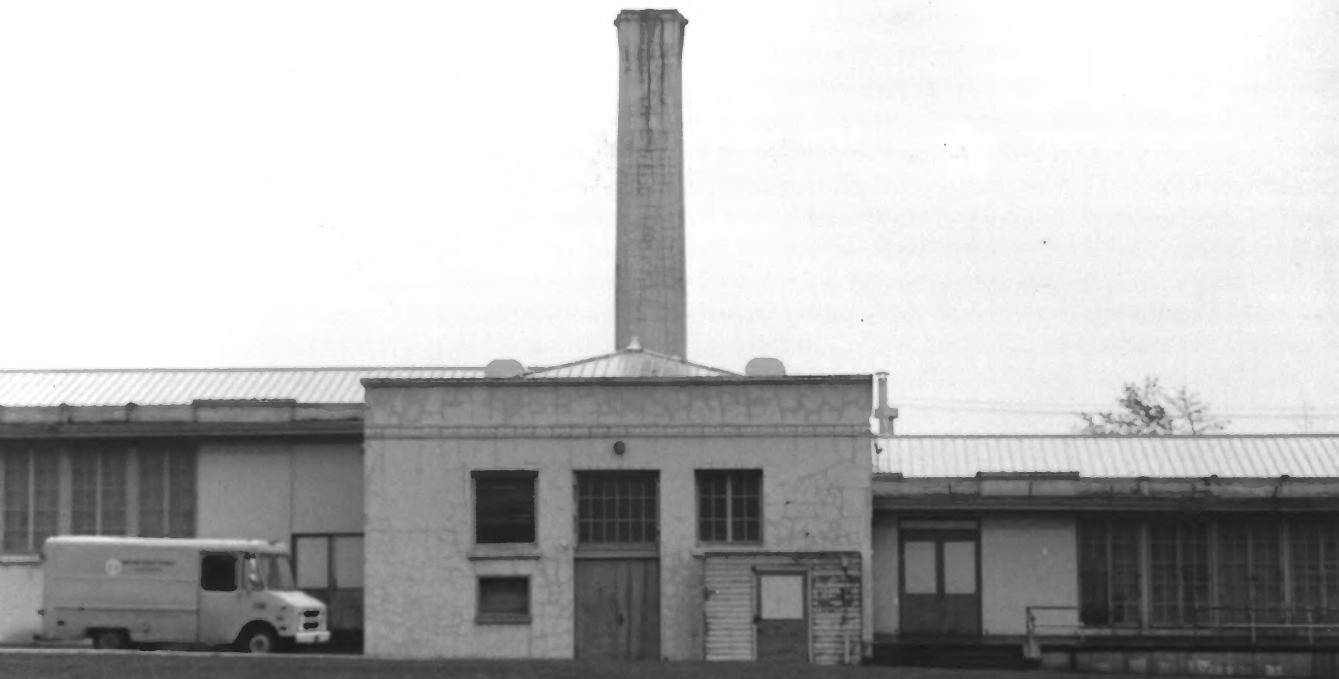
Melissa Darby photo

3327 NE Simpson

Portland, Ore 97211

14 of 15

8861
JUN 27 1988
JFMR



ELEMENTARY

J. D. Kennedy School
5736 Ne 33rd

Portland, MULTNOMAH COUNTY, OREGON

Boiler Room + Chimney Detail
East Elevation

melissa Darby photo
3327 NE Simpson
Portland Ore
97211

15 of 15