



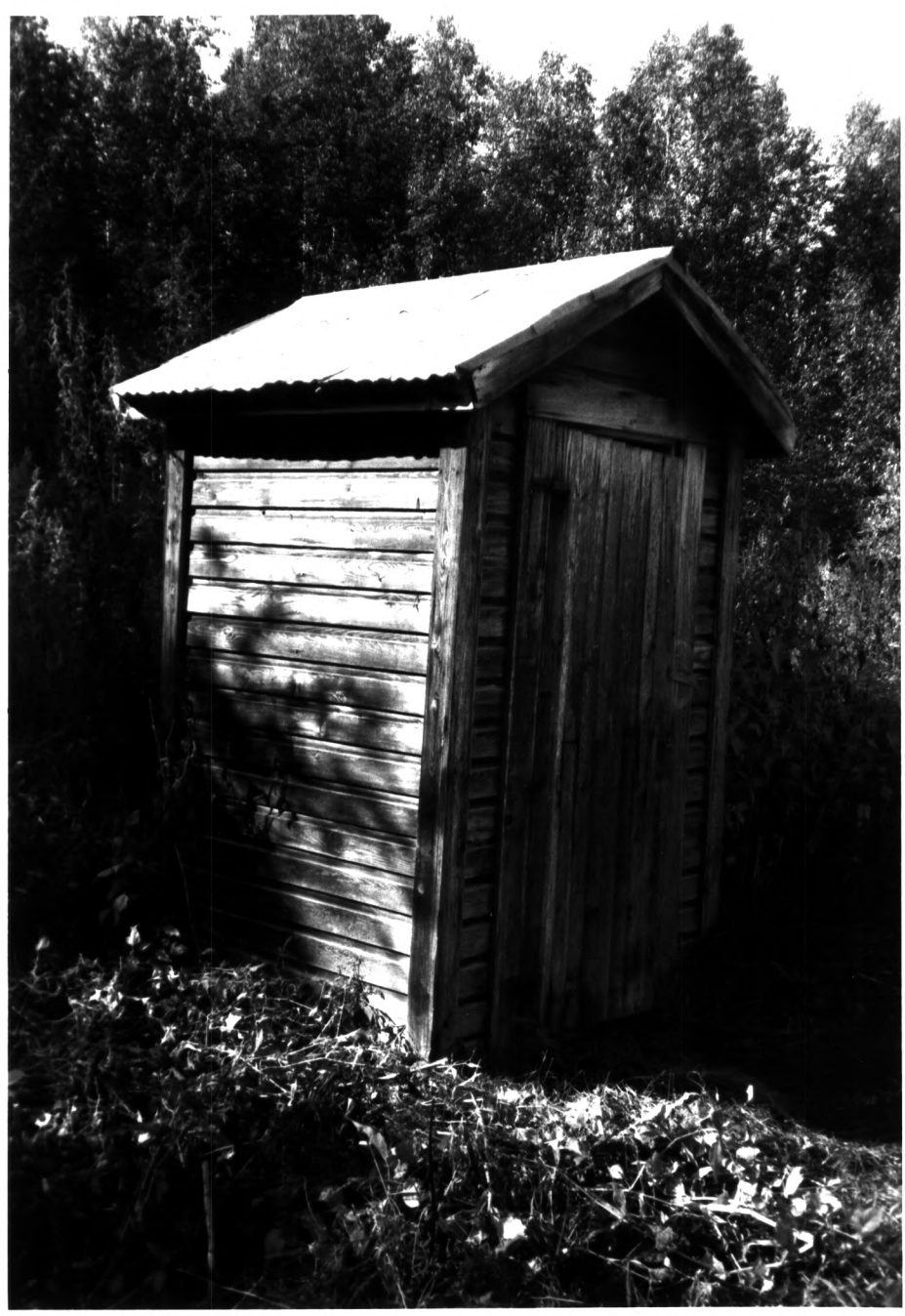
1. INTERIOR, STAIRCASE, SLAVEN ROADHOUSE;
YUKON RIVER LIFEWAYS
2. Eagle vicinity
3. Steven Peterson
4. 1982
5. NPS-ARO
- 6.
7. P23; I8, 9, 10, 11



1. INTERIOR, SECOND FLOOR, SLAVEN ROADHOUSE:
YUKON RIVER LIFEWAYS
2. Eagle vicinity, Alaska
3. Steven Peterson
4. 1982
5. NPS-ARO
- 6.
7. P24;I8,9,10,11



1. SCREENED CACHE, SLAVEN ROADHOUSE;
YUKON RIVER LIFEWAYS
2. Eagle vicinity, Alaska
3. Steven Peterson
4. 1982
5. NPS-ARO
6. looking east
7. P25;I7



1. SLAVEN ROADHOUSE, OUTHOUSE; YUKON
RIVER LIFEWAYS
2. Eagle vicinity, Alaska
3. Steven Peterson
4. 1982
5. NPS-ARO
6. looking south
7. P26;I7



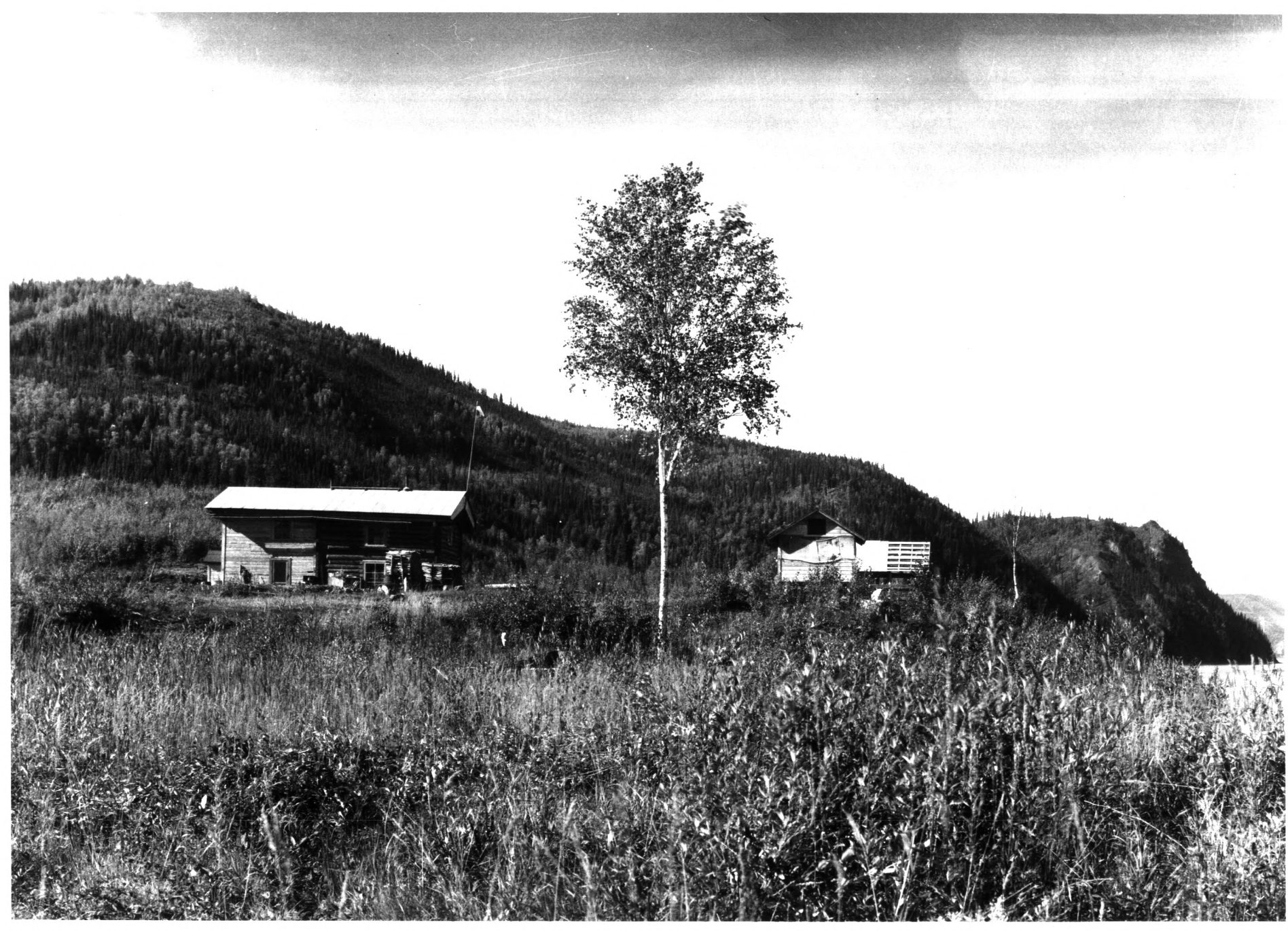
1. SLAVEN ROADHOUSE; YUKON RIVER LIFEWAYS
2. Eagle vicinity, Alaska
3. Steven Peterson
4. 1982
5. NPS-ARO
6. looking west
7. P22;I7,8,9,10.11



1. FRANK SLAVEN ROADHOUSE; YUKON RIVER
LIFEWAYS
2. Eagle vicinity, Alaska
3. Jet Lowe
4. August 1984
5. Library of Congress, HABS collection
6. looking southwest
7. P27,I7,8,9,10,11



1. FRANK SLAVEN ROADHOUSE; YUKON RIVER
LIFEWAYS
2. Eagle vicinity
3. Jet Lowe
4. August 1984
5. Library of Congress, HABS collection
6. looking west
7. P28;I7,8,9,10,11



1. SLAVEN ROADHOUSE, GENERAL VIEW; YUKON RIVER LIFEWAYS
2. Eagle vicinity, Alaska
3. J.B. Mertie, Jr.
4. August 26, 1938
5. USGS, Denver #2507, 2508
6. looking west
7. P20;I7



1. SLAVEN ROADHOUSE, SIMILAR VIEWS OF
CABIN AND GARDEN; YUKON RIVER LIFEWAYS
2. Eagle vicinity, Alaska
3. J.B. Mertie, Hr.
4. August 26, 1938
5. USGS, Denver #2493,2394
- 6.
7. P21; I7



1. SLAVEN ROADHOUSE, MAN AND WIFE AT LEFT,
OWNERS, ALSO GOLD CLAIM; YUKON RIVER
LIFEWAYS
2. Eagle vicinity, Alaska
3. 4. 1935
5. Everett S. Hammon Collection, UA Fairbanks
6. looking west 7. P19; I7,8,9,10,11



1. GENERAL MCRAE, MRS. BAKER, FRANK SLAVEN,
MISS BISSELL, SLAVEN ROADHOUSE;
YUKON RIVER LIFEWAYS
2. Eagle vicinity, Alaska
3. Ernest Patty
4. ca. 1934-36
5. NPS-ARO, courtesy of Stan Patty
- 6.
7. P18; I6