



This photoprint is issued for reference use only. It is not to be copied for resale. Permission for use in a publication, film or video production must be requested in writing from the Photographs Librarian.

Photographs Department
Oregon Historical Society
1230 SW Park Avenue
Portland, Oregon 97205

NEGATIVE NUMBER ORHI 9008 or PGE 129-6 OPS

#1905

Druhot, Alice, House. (1891-1892)
("Cable House") EAST FACADE

1903 SW CABLE STREET

PORTLAND, MULTNOMAH COUNTY, OREGON

HISTORICAL VIEW, LOOKING WEST, 1890s

OREGON HISTORICAL SOCIETY COLLECTIONS

LOT 6

Portland Cable Railway

Goose Hollow, ca. 1890

Portland Cable Ry castle-like residence belonged to Ms. Alice

Druhot, later Charles T. McDougall

Castellated bldg. still stands Dec. 1972

Ran from 18th and Jefferson to Ptld. Hghts.
Electric portion went to Union Station

Cable House
View looking west from
Montgomery Drive

Portland Cable Railway Co., 1893.



This photoprint is issued for reference use only. It is not to be copied for resale. Permission for use in a publication, film or video production must be requested in writing from the Photographs Librarian.

Photographs Department
Oregon Historical Society
1230 SW Park Avenue
Portland, Oregon 97205

NEGATIVE NUMBER ORHI 54844*1905

*Portland Cable Railway Co., 1893
with operators*

DUNN, ALICE, HOUSE (1891-1892)

("CABLE HOUSE"): EAST FACADE

1903 SW CABLE STREET

PORTLAND, MULTNOMAH COUNTY, OREGON

HISTORIC VIEW, LOOKING WEST FROM MONT COMPANY TOWER, 1890S

OREGON HISTORICAL SOCIETY COLLECTIONS

2 OF 6

Cable House
Portland Cable Railway Co.
View looking west



This photoprint is issued for reference use only. It is not to be copied for resale. Permission for use in a publication, film or video production must be requested in writing from the Photographs Librarian.

Photographs Department
Oregon Historical Society
1230 SW Park Avenue
Portland, Oregon 97205

NEGATIVE NUMBER ORHI 21688

#1654

#1905

DRAHOT, ALICE, HOUSE (1897-1898)
("CABLE HOUSE") NORTH PLACEMENT

1903 SW CABLE STREET

PORTLAND, MULTNOMAH COUNTY, OREGON

HISTORICAL VIEW, LOOKING SOUTH, 1890s

OREGON HISTORICAL SOCIETY COLLECTIONS

3 OF 4

NOMINATED BUILDING IS ON FAR RIGHT,
UPPERMOST CORNER.

Portland Heights -

Cable railway, built in 1890

Castle-like structure on right was once residence of Mrs. Alice
Druhot, Arnold Druhot (architect) & Carl E. Druhot (baseball
player), was later residence of the Chas. T. Mc Dougall family.

Cable House
View looking south from
Mill Street.



Drs. Alice, House (1891-92)
1903 SW Cable Street
Portland, Multnomah County, Oregon

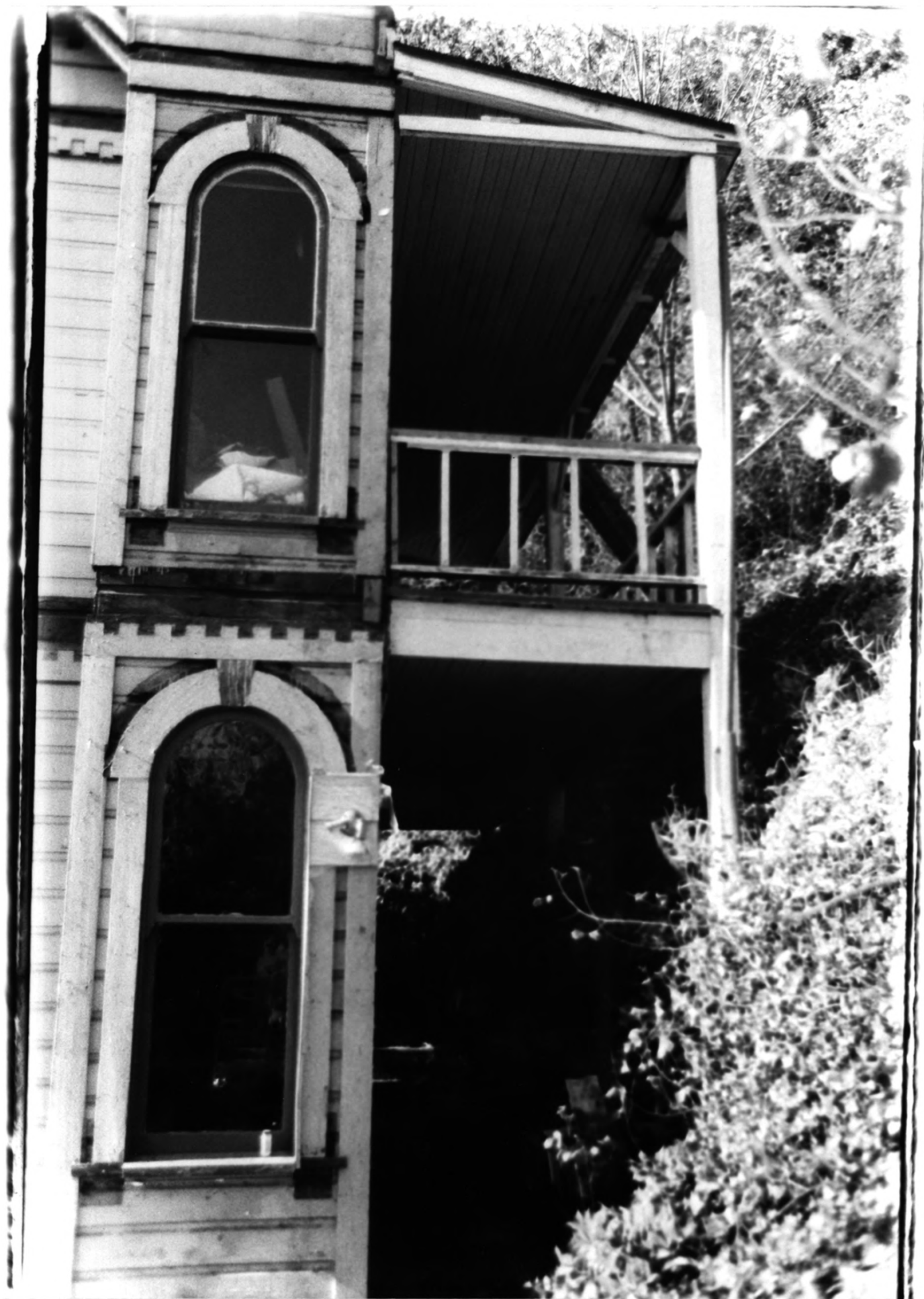
Lee S. Weinstein, Photo, 1987.
1903 SW Cable Street
Portland, OR 97201

4 of 6

North elevation

Exterior restoration in progress

(both square windows to be replaced)



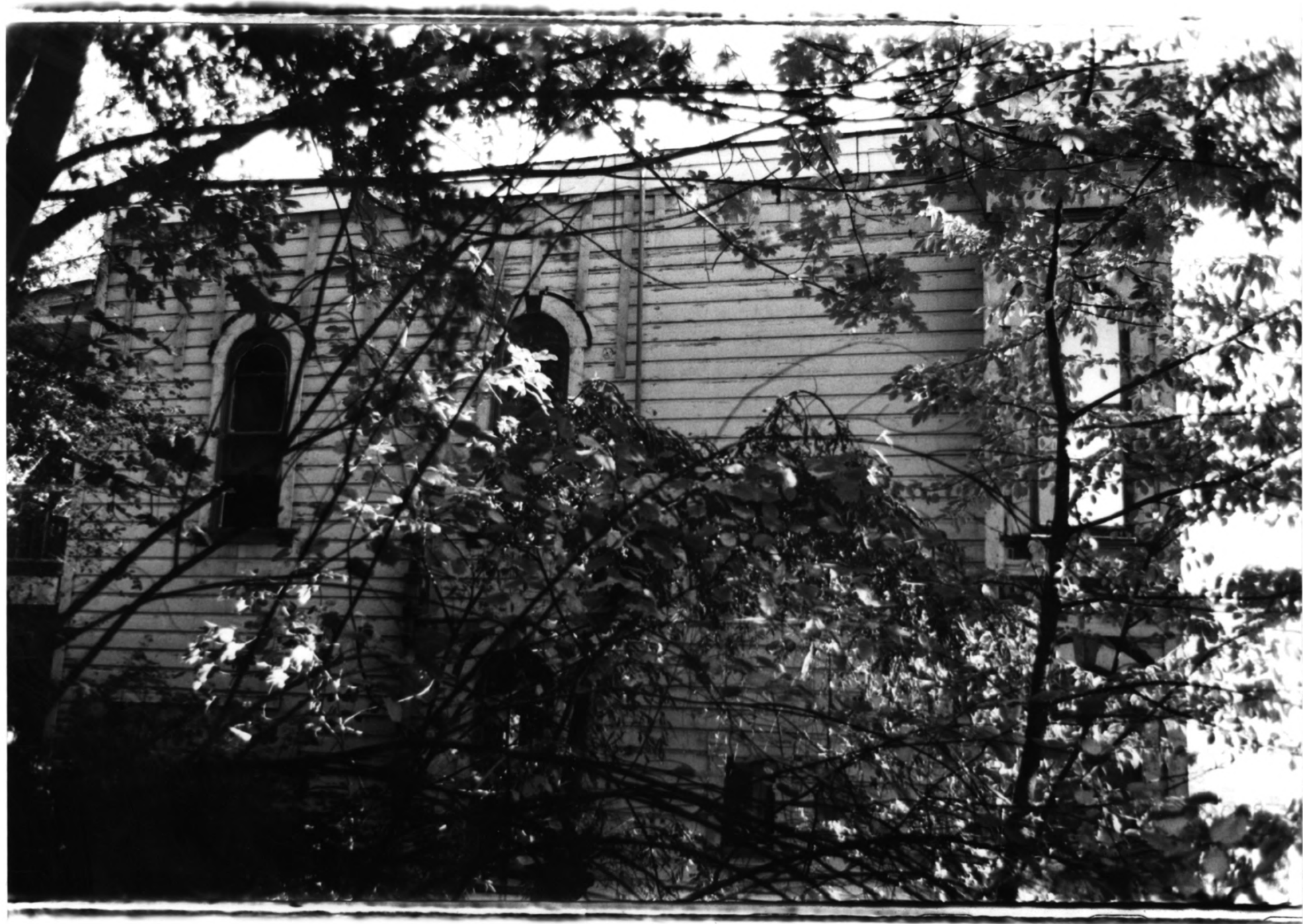
Druhot, Alice, House (1891-92)
1903 SW Cable Street
Portland, Multnomah County, Oregon

Lee S. Weinstein Photo, 1987
1903 SW Cable Street
Portland, OR 97201

5 of 6

North elevation showing northwest
corner and west (back) side
of house

Exterior restoration in progress



Druhot, Alice, House (1891-92)
1903 SW Cable Street
Portland, Multnomah County, Oregon

Lee S. Weinstein Photo, 1987
1903 SW Cable Street
Portland, OR 97201

6 of 6

South elevation

Exterior restoration in progress