



**NATIONAL REGISTER OF HISTORIC PLACES
PROPERTY PHOTOGRAPH FORM**

(Type all entries - attach to or enclose with photograph)

STATE Hawaii	
COUNTY Hawaii	
FOR NPS USE ONLY	
ENTRY NUMBER JUL 1 1974	DATE

SEE INSTRUCTIONS

1. NAME

COMMON: Puna-Ka'u Historic District
AND/OR HISTORIC:

2. LOCATION

STREET AND NUMBER:

Puna-Ka'u district, Hawaii Volcanoes National Park

CITY OR TOWN:

Volcanoes

STATE:

Hawaii 96718

CODE

15

COUNTY:

Hawaii

CODE

001

3. PHOTO REFERENCE

PHOTO CREDIT: National Park Service

DATE OF PHOTO: 1970

CIRE-HAVO 412

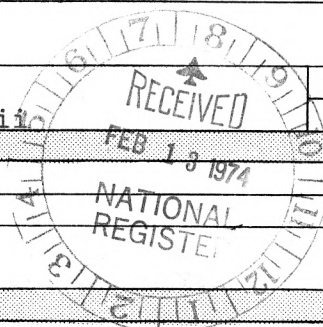
NEGATIVE FILED AT:

Hawaii Volcanoes NP Neg. No. CIRE-HAVO 412

4. IDENTIFICATION

DESCRIBE VIEW, DIRECTION, ETC.

Many small sites in the upland areas are hidden by low growing but lush vegetation. This stone platform (probably a house site) is over four miles from the ocean. Picture taken looking makai, toward the ocean.





NATIONAL REGISTER OF HISTORIC PLACES
PROPERTY PHOTOGRAPH FORM

(Type all entries - attach to or enclose with photograph)

STATE Hawaii	
COUNTY Hawaii	
FOR NPS USE ONLY	
ENTRY NUMBER	DATE
JUL 1	1974

SEE INSTRUCTIONS

1. NAME

COMMON: Puna-Ka'u Historic District

AND/OR HISTORIC:

2. LOCATION

STREET AND NUMBER:

Puna-Ka'u District, Hawaii Volcanoes NP

CITY OR TOWN:

Volcanoes

STATE:

Hawaii 96718

CODE

15

COUNTY:

Hawaii

CODE

001

3. PHOTO REFERENCE

PHOTO CREDIT: National Park Service

DATE OF PHOTO: September, 1972

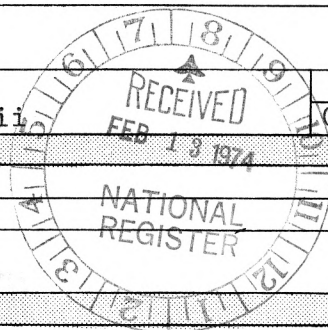
NEGATIVE FILED AT:

Hawaii Volcanoes NP Neg. No. 691

4. IDENTIFICATION

DESCRIBE VIEW, DIRECTION, ETC.

Looking SE along the ridge formed by Holei pali from near Naulu forest on the Chain of Craters road.





NATIONAL REGISTER OF HISTORIC PLACES
PROPERTY PHOTOGRAPH FORM

(Type all entries - attach to or enclose with photograph)

STATE Hawaii	
COUNTY Hawaii	
FOR NPS USE ONLY	
ENTRY NUMBER JUL 1 1974	DATE

SEE INSTRUCTIONS

1. NAME

COMMON: Puna-Ka'u Historic District

AND/OR HISTORIC:

2. LOCATION

STREET AND NUMBER:

Puna-Ka'u District, Hawaii Volcanoes NP

CITY OR TOWN:

Volcanoes

STATE:

Hawaii 96718

CODE

COUNTY:

15

Hawaii

CODE

001

3. PHOTO REFERENCE

PHOTO CREDIT: National Park Service

DATE OF PHOTO: October, 1967

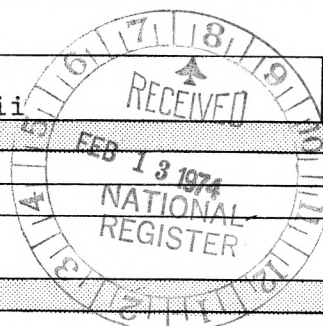
NEGATIVE FILED AT:

Hawaii Volcanoes NP Neg. No. 178

4. IDENTIFICATION

DESCRIBE VIEW, DIRECTION, ETC.

Aerial view of Wahaula temple site after construction of interpretive trails. Looking makai, toward the ocean.





**NATIONAL REGISTER OF HISTORIC PLACES
PROPERTY PHOTOGRAPH FORM**

(Type all entries - attach to or enclose with photograph)

STATE Hawaii	
COUNTY Hawaii	
FOR NPS USE ONLY	
ENTRY NUMBER JUL 1 1974	DATE

SEE INSTRUCTIONS

1. NAME

COMMON: Puna-Ka'u Historic District
AND/OR HISTORIC:

2. LOCATION

STREET AND NUMBER:

Puna-Ka'u District, Hawaii Volcanoes NP

CITY OR TOWN:

Volcanoes

STATE:

Hawaii 96718

CODE

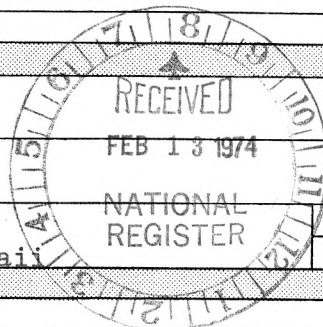
15

COUNTY:

Hawaii

CODE

001



3. PHOTO REFERENCE

PHOTO CREDIT: National Park Service

DATE OF PHOTO: 1972

NEGATIVE FILED AT:

Hawaii Volcanoes NP, Neg. No. CIRE-HAVO 411

4. IDENTIFICATION

DESCRIBE VIEW, DIRECTION, ETC.

Makaopuhi lava flow covering portion of Chain of Craters road.
Many archeological sites have been destroyed by such lava flows in recent times.



**NATIONAL REGISTER OF HISTORIC PLACES
PROPERTY PHOTOGRAPH FORM**

(Type all entries - attach to or enclose with photograph)

STATE Hawaii	
COUNTY Hawaii	
FOR NPS USE ONLY	
ENTRY NUMBER JUL 1 1974	DATE

SEE INSTRUCTIONS

1. NAME

COMMON: Puna-Ka'u Historic District

AND/OR HISTORIC:

2. LOCATION

STREET AND NUMBER:

Puna-Ka'u District, Hawaii Volcanoes NP

CITY OR TOWN:

Volcanoes

STATE:

Hawaii 96718

CODE

15

COUNTY:

Hawaii

CODE

001

3. PHOTO REFERENCE

PHOTO CREDIT: National Park Service

DATE OF PHOTO: 1972

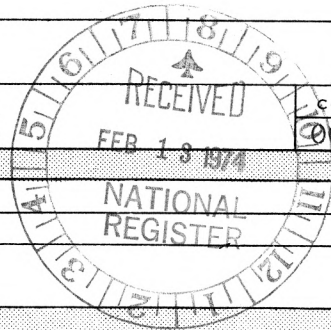
NEGATIVE FILED AT:

Hawaii Volcanoes NP, Neg. No. 59-56

4. IDENTIFICATION

DESCRIBE VIEW, DIRECTION, ETC.

Keauhou landing is an important site in connection with the ranching and pulu harvesting periods. The stone walled enclosures and house site are mostly late historic. Some sites in the vicinity are of prehistoric age. Looking toward Halape from Keauhou.





NATIONAL REGISTER OF HISTORIC PLACES
PROPERTY PHOTOGRAPH FORM

(Type all entries - attach to or enclose with photograph)

STATE Hawaii	
COUNTY Hawaii	
FOR NPS USE ONLY	
ENTRY NUMBER	DATE
JUL 1 1974	

SEE INSTRUCTIONS

1. NAME

COMMON: Puna-Ka'u Historic District

AND/OR HISTORIC:

2. LOCATION

STREET AND NUMBER:

Puna-Ka'u District, Hawaii Volcanoes National Park

CITY OR TOWN:

Volcanoes

STATE:

Hawaii 96718

CODE

15

COUNTY:

Hawaii

CODE

001

3. PHOTO REFERENCE

PHOTO CREDIT: National Park Service

DATE OF PHOTO: Sept. 25, 1972

CIRE-HAVO 413

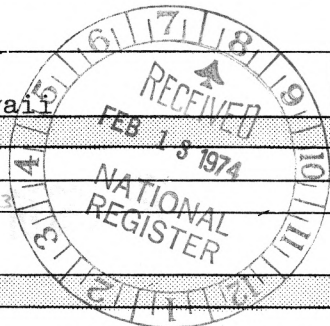
NEGATIVE FILED AT:

Hawaii Volcanoes NP Neg. No. CIRE-HAVO 413

4. IDENTIFICATION

DESCRIBE VIEW, DIRECTION, ETC.

Kuee ruins from the air. The white areas in and near the stone enclosures are shell midden from the opihi collecting. The area is still in use by modern day fishermen and shellfish collectors.





NATIONAL REGISTER OF HISTORIC PLACES
PROPERTY PHOTOGRAPH FORM

(Type all entries - attach to or enclose with photograph)

STATE Hawaii	
COUNTY Hawaii	
FOR NPS USE ONLY	
ENTRY NUMBER JUL 1 1974	DATE

SEE INSTRUCTIONS

1. NAME

COMMON: Puna-Ka'u Historic District

AND/OR HISTORIC:

2. LOCATION

STREET AND NUMBER:

Puna-Ka'u District, Hawaii Volcanoes NP

CITY OR TOWN:

Volcanoes

STATE:

Hawaii 96718

CODE

15

COUNTY:

Hawaii

CODE

001

3. PHOTO REFERENCE

PHOTO CREDIT: National Park Service

DATE OF PHOTO: 1970

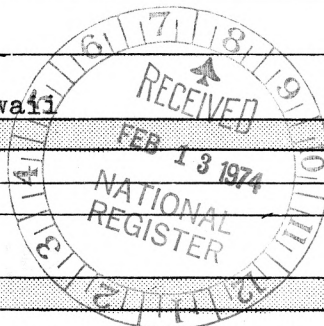
NEGATIVE FILED AT:

Hawaii Volcanoes NP Neg. No. 45-43

4. IDENTIFICATION

DESCRIBE VIEW, DIRECTION, ETC.

Puuloa petroglyphs. This is the largest collection of rock carvings in the park with a great variety of figures, patterns, dots and pictorial elements. The area covered by these petroglyphs is about 25,000 sq. feet, or well over 1/2 acre.





NATIONAL REGISTER OF HISTORIC PLACES
PROPERTY PHOTOGRAPH FORM

(Type all entries - attach to or enclose with photograph)

STATE	Hawaii	
COUNTY	Hawaii	
FOR NPS USE ONLY		
ENTRY NUMBER	JUL 1 1974	DATE

SEE INSTRUCTIONS

1. NAME

COMMON: Puna-Ka'u Historic District

AND/OR HISTORIC:

2. LOCATION

STREET AND NUMBER:

Puna-Ka'u District, Hawaii Volcanoes National Park

CITY OR TOWN:

Volcanoes

STATE:

Hawaii 96718

CODE

15

COUNTY:

Hawaii

CODE

001

3. PHOTO REFERENCE

PHOTO CREDIT: National Park Service

DATE OF PHOTO: 1970

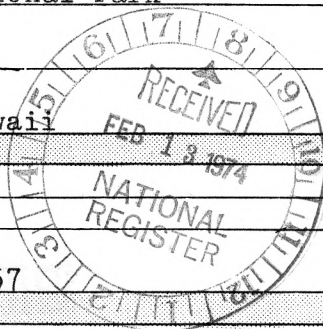
NEGATIVE FILED AT:

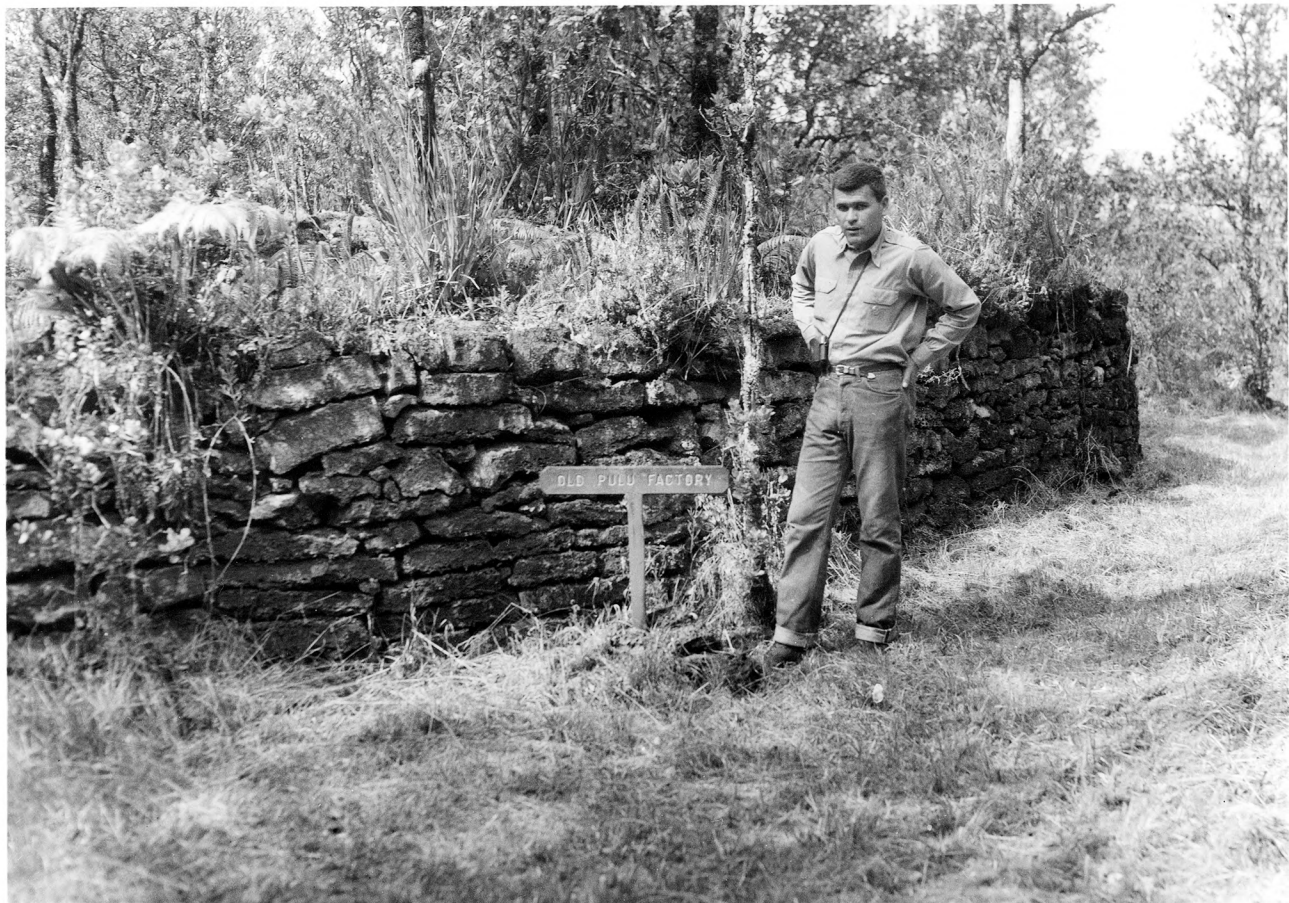
Hawaii Volcanoes NP Neg. No 59-57

4. IDENTIFICATION

DESCRIBE VIEW, DIRECTION, ETC.

Halley Cox, University of Hawaii, recording petroglyphs found near Keauhou landing.





**NATIONAL REGISTER OF HISTORIC PLACES
PROPERTY PHOTOGRAPH FORM**

(Type all entries - attach to or enclose with photograph)

STATE Hawaii	
COUNTY Hawaii	
FOR NPS USE ONLY	
ENTRY NUMBER JUL 1 1974	DATE

SEE INSTRUCTIONS

1. NAME			
COMMON: Puna-Ka'u Historic District			
AND/OR HISTORIC:			
2. LOCATION			
STREET AND NUMBER: Puna-Ka'u District, Hawaii Volcanoes National Park			
CITY OR TOWN: Volcanoes			
STATE: Hawaii	CODE 96718	COUNTY: Hawaii	CODE 001
3. PHOTO REFERENCE			
PHOTO CREDIT: National Park Service			
DATE OF PHOTO: 1972			
NEGATIVE FILED AT: Hawaii Volcanoes NP Neg. No. 334			
4. IDENTIFICATION			
DESCRIBE VIEW, DIRECTION, ETC. Looking at one of the dry masonry walls along side the trail to Napau Crater. The structure was probably a portion of the corral for the pack animals. N. Castro in photo.			

