



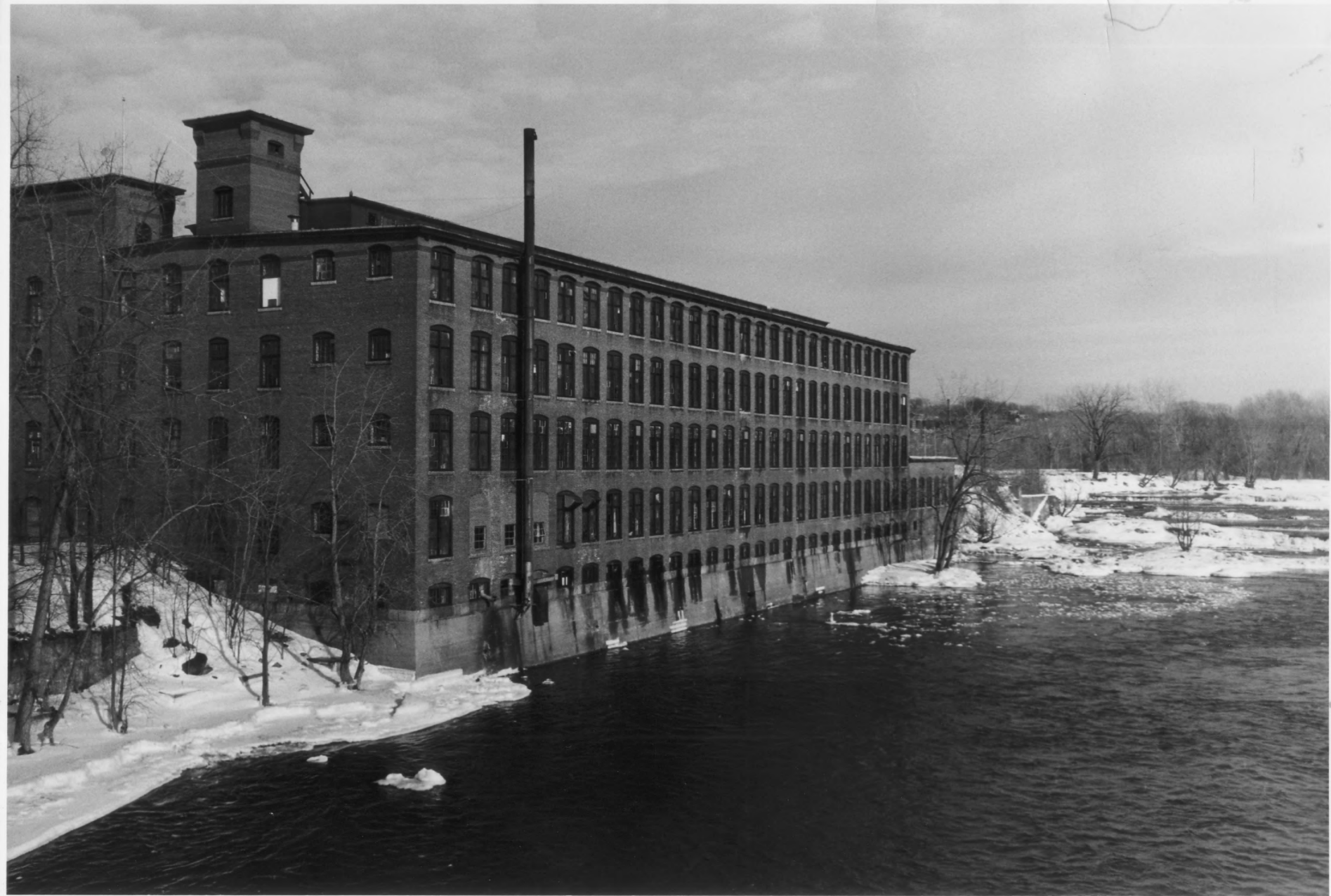
Winooski Falls Mill District photo #1
Chittenden Co. JUL 10 1978
Winooski, Vermont
Hugh A. Boyd, photographer 1978

Looking northwest across the Winooski
River to the Champlain Woolen Mill 1979



Winooski Falls Mill District photo #2
Chittenden Co.
Winooski, Vermont JUL 10 1978
Hugh A. Boyd, photographer 1978

looking east from the bridge to the
Chase Cotton Mill on the right FEB 9 1979



Winooski Falls Mill District photo #3

Chittenden Co.

Winooski, Vermont

Hugh A. Boyd, photographer

JUL 10 1978

FEB 9 1979

1978

looking east from the bridge to the
Champlain Woolen Mill on the left



Winooski Falls Mill District photo #4
Chittenden Co. **JUL 10 1978**
Winooski, Vermont
Hugh A. Boyd, photographer 1978

FEB 9 1979

Looking northwest over the Winooski
River from the bridge to the Colchester
Merino Mill



Winooski Falls Mill District photo #5

Chittenden Co.

JUL 10 1978

Winooski, Vermont

Hugh A. Boyd, photographer 1978

FEB 9 1979

looking southwest along the facade of the
Colchester Merino Mill



Winooski Falls Mill District photo #6
Chittenden Co.

Winooski, Vermont

Hugh A. Boyd, Photographer 1973

JUL 10 1978

FEB 9 1979

Looking east up the Winooski River toward
the bridge and the Champlain Mill; the
head gates for the Colchester Mill in the
foreground



Winooski Falls Mill District photo #7
Chittenden Co. JUL 10 1978
Winooski, Vermont
Hugh A. Boyd, photographer FEB 9 1979 1978

Looking northeast over the railway toward
the wheelhouse and penstocks with the
Winooski Worsted Mill in the background



Winooski Falls Mill District photo #8
Chittenden Co. JUL 10 1978
Winooski, Vermont
Hugh A. Boyd, photographer FEB 9 1979 1978

looking north into the wheelhouse at the
remains of the turbo and equipment



THE
MILL
RESTAURANT

IN WHAT ONE CAN
KNOW

THE
MILL
RESTAURANT

Winooski Falls Mill District photo #9
Chittenden Co.
Winooski, Vermont
Rebecca Hostettler, photographer 1978

JUL 10 1978

FEB 9 1979

Looking northwest at the Mill Boarding
House at the corner of West Canal Street
and Weaver Street



Winooski Falls near Burlington, About AD 1840

Winooski Falls Mill District photo #10
Chittenden Co.
Winooski, Vermont
Hugh A. Boyd, photographer

JUL 10 1978

FEB 9 1979 1978

copy of an early sketch of Winooski
Falls c.1840
The Wilbur Collection; Univ. of Vermont



Winooski Falls Mill District photo #11
Chittenden Co.

Winooski, Vermont

Hugh A. Boyd, photographer

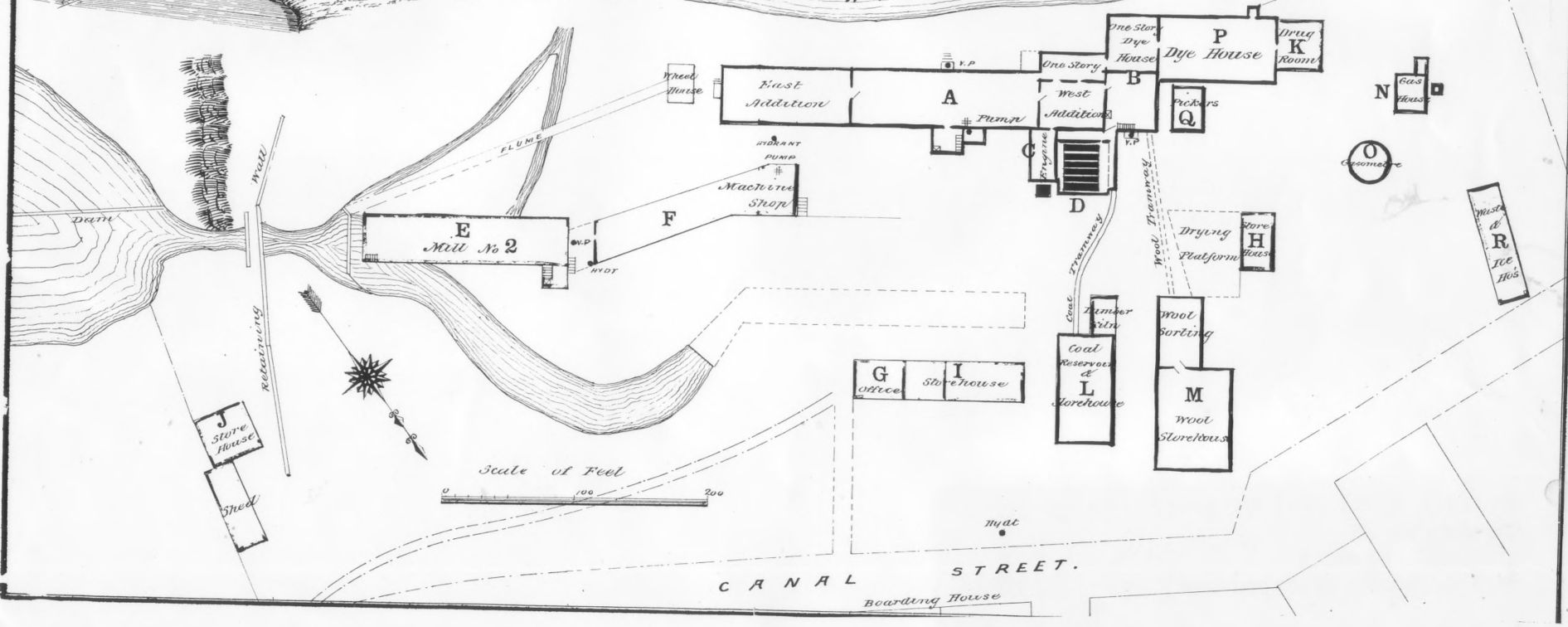
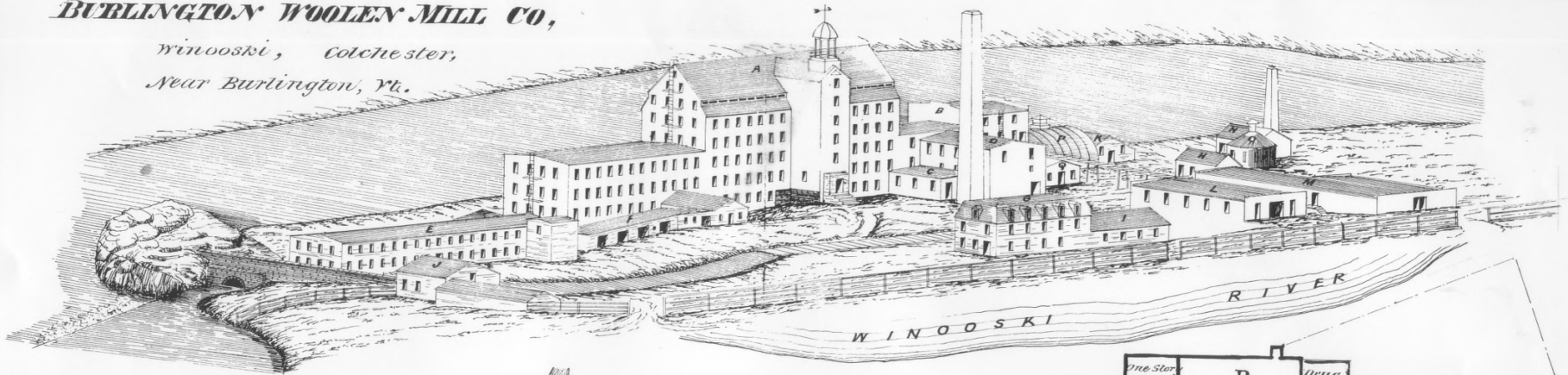
JUL 10 1978

FEB 9 1978

copy of an early photograph showing only
the Burlington Woolen Mill in left hand
corner c.1857 The Wilbur Collection

BURLINGTON WOOLEN MILL CO,

Winooski, Colchester,
Near Burlington, Vt.



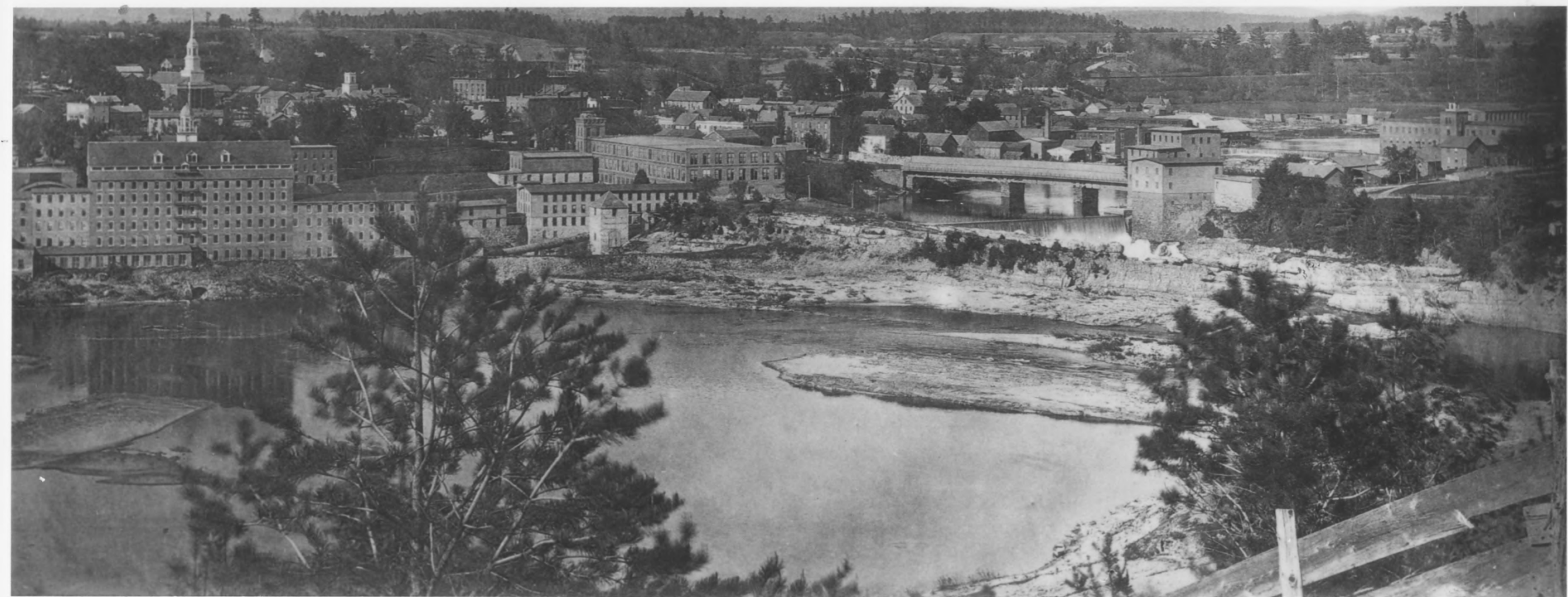


Winooski Falls Mill District photo #12
Chittenden Co.
Winooski, Vermont
Hugh A. Boyd, photographer

JUL 10 1978
1978

FEB 9 1979

copy of an early lithograph of the
Burlington Woolen Mill c.1865
Herrimack Textile Museum; Andover, Mass.



Winooski Falls Mill District photo #13
Chittenden Co. JUL 10 1978
Winooski, Vermont
Hugh A. Boyd, photographer 1978

copy of an early photograph of the FEB 9 1979
Winooski's mills c.1830
Wilbur Collection; Univ. of Vermont

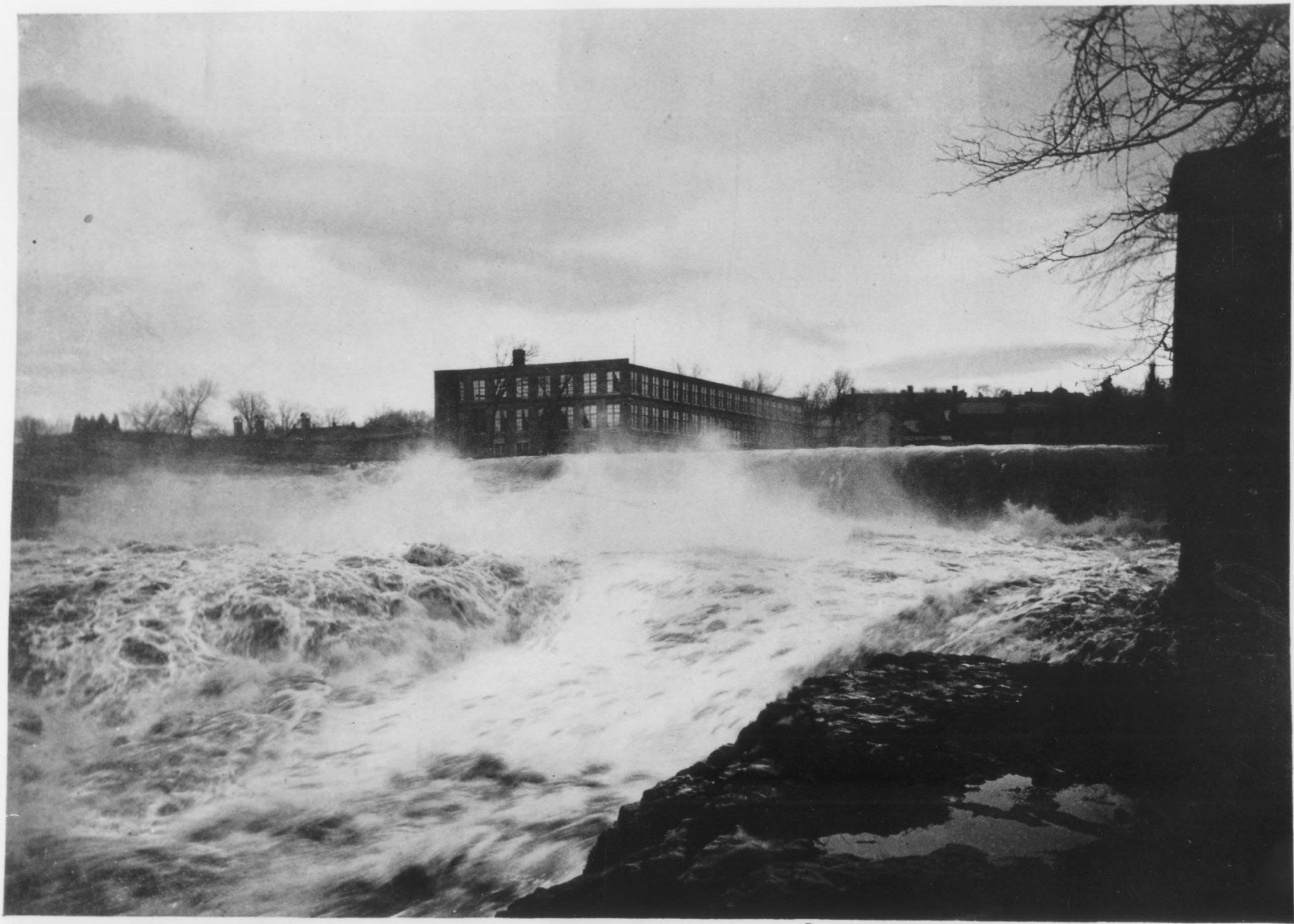


Mills at Night, Winooski.

Photo. by Vt. Illus. Co.

Winooski Falls Mill District photo #14
Chittenden Co. JUL 10 1978
Winooski, Vermont
Hugh A. Boyd, photographer FEB 9 1979 1978

copy of an early photograph of the
Winooski's mills at night c.1885
Wilbur Collection; Univ. of Vermont



Lower Falls and Colchester Mills, Winooski.

Photo. by A. Adsit.

Winooski Falls Mill District photo #15
Chittenden Co.
Winooski, Vermont
Hugh A. Boyd, photographer

JUL 10 1978

FEB 9 1979

a copy of an early photograph of the
Colchester Merino Mill c.1835
Wilbur Collection; Univ. of Vermont