



Christian County Multiple  
Resource Area  
Monroe Dalton House  
Christian County, Kentucky

Kit Garrett, Pride, Inc.  
Box 4096  
Hopkinsville, Kentucky 42240  
November 1, 1982

Photo 2 of 27  
Northeast Elevation



Christian County Multiple  
Resource Area  
Monroe Dalton House  
Christian County, Kentucky

---

Kit Garrett, Pride, Inc.  
Box 4096  
Hopkinsville, Kentucky 42240  
November 1, 1982

---

Photo 3 of 27  
Northeast Elevation



Christian County Multiple  
Resource Area  
Monroe Dalton House  
Christian County, Kentucky

---

Kit Garrett, Pride, Inc.  
P. O. Box 4096  
Hopkinsville, Kentucky 42240  
November 1, 1982

Photo 4 of 27  
North Elevation,  
Palladian Window



Christian County Multiple  
Resource Area  
Monroe Dalton House  
Christian County, Kentucky

---

Kit Garrett, Pride, Inc.  
Box 4096  
Hopkinsville, Kentucky 42240  
November 1, 1982

---

Photo 5 of 27  
Northeast Elevation, Entry





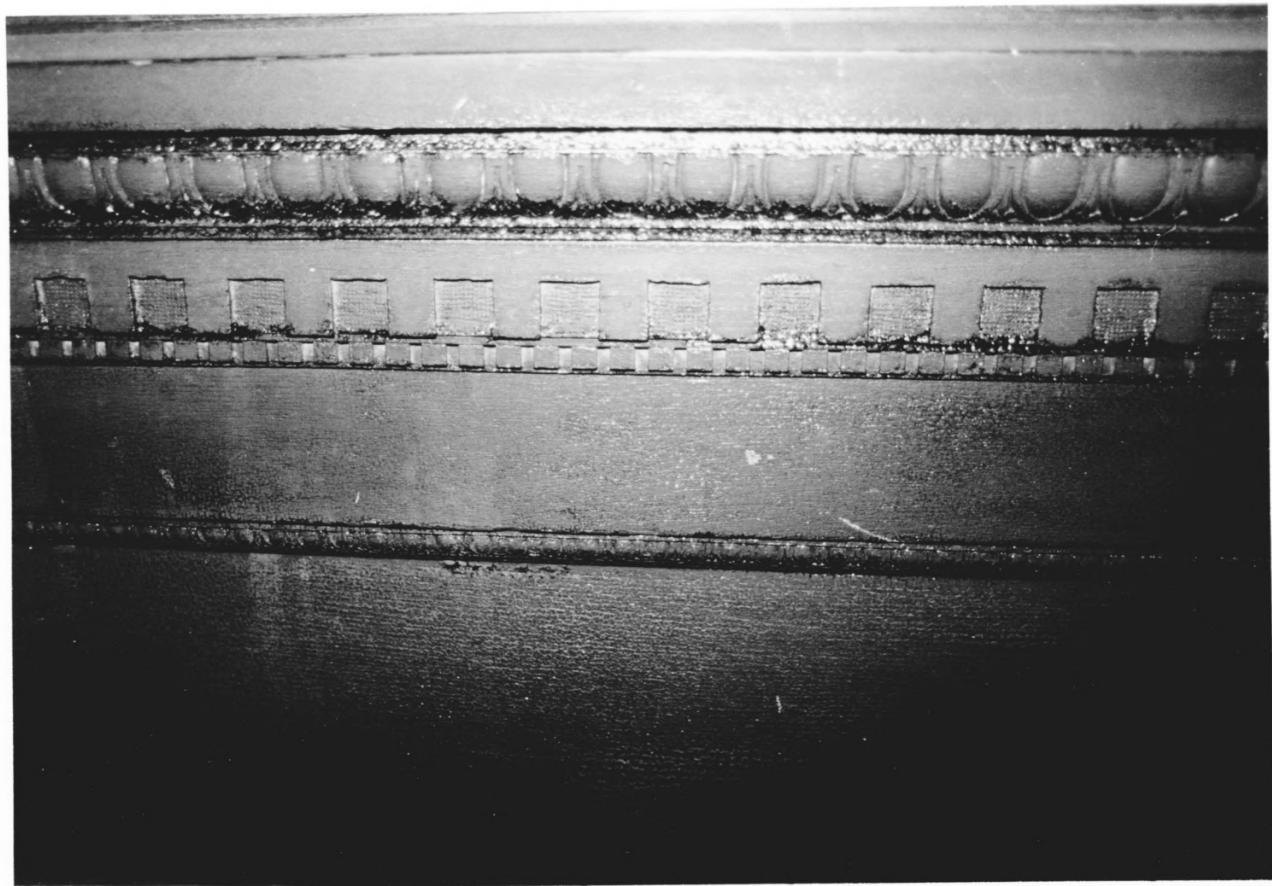
Christian County Multiple  
Resource Area  
Monroe Dalton House  
Christian County, Kentucky

---

Kit Garrett, Pride, Inc.  
Box 4096  
Hopkinsville, Kentucky 42240  
November 1, 1982

---

Photo 6 of 27  
Northeast Elevation,  
Door Detail



Christian County Multiple  
Resource Area  
Monroe Dalton House  
Christian County, Kentucky

---

Kit Garrett, Pride, Inc.  
P.O.Box 4096  
Hopkinsville, Kentucky 42240  
November 1, 1982

---

Photo 7 of 27  
Northeast Elevation,  
Door Detail



Christian County Multiple  
Resource Area  
Monroe Dalton House  
Christian County, Kentucky

---

Kit Garrett, Pride, Inc.  
Box 4096  
Hopkinsville, Kentucky 42240  
November 1, 1982

---

Photo 8 of 27  
Northwest Elevation



Christian County Multiple  
Resource Area  
Monroe Dalton House  
Christian County, Kentucky

---

Kit Garrett, Pride, Inc.  
Box 4096  
Hopkinsville, Kentucky 42240  
November 1, 1982

---

Photo 9 of 27  
Northwest elevation, Detail





Christian County Multiple  
Resource Area  
Monroe Dalton House  
Christian County, Kentucky

Kit Garrett, Pride, Inc.  
Box 4096  
Hopkinsville, Kentucky 42240  
November 1, 1982

Photo 10 of 27  
Southwest elevation



Christian County Multiple  
Resource Area  
Monroe Dalton House  
Christian County, Kentucky

---

Kit Garrett, Pride, Inc.  
Box 4096  
Hopkinsville, Kentucky 42240  
November 1, 1982

---

Photo 11 of 27  
West Elevation, Detail



Christian County Multiple  
Resource Area  
Monroe Dalton House  
Christian County, Kentucky

---

Kit Garrett, Pride, Inc.  
Box 4096  
Hopkinsville, Kentucky 42240  
November 1, 1982

---

Photo 12 of 27  
Southwest Elevation

---



Christian County Multiple  
Resource Area  
Monroe Dalton House  
Christian County, Kentucky

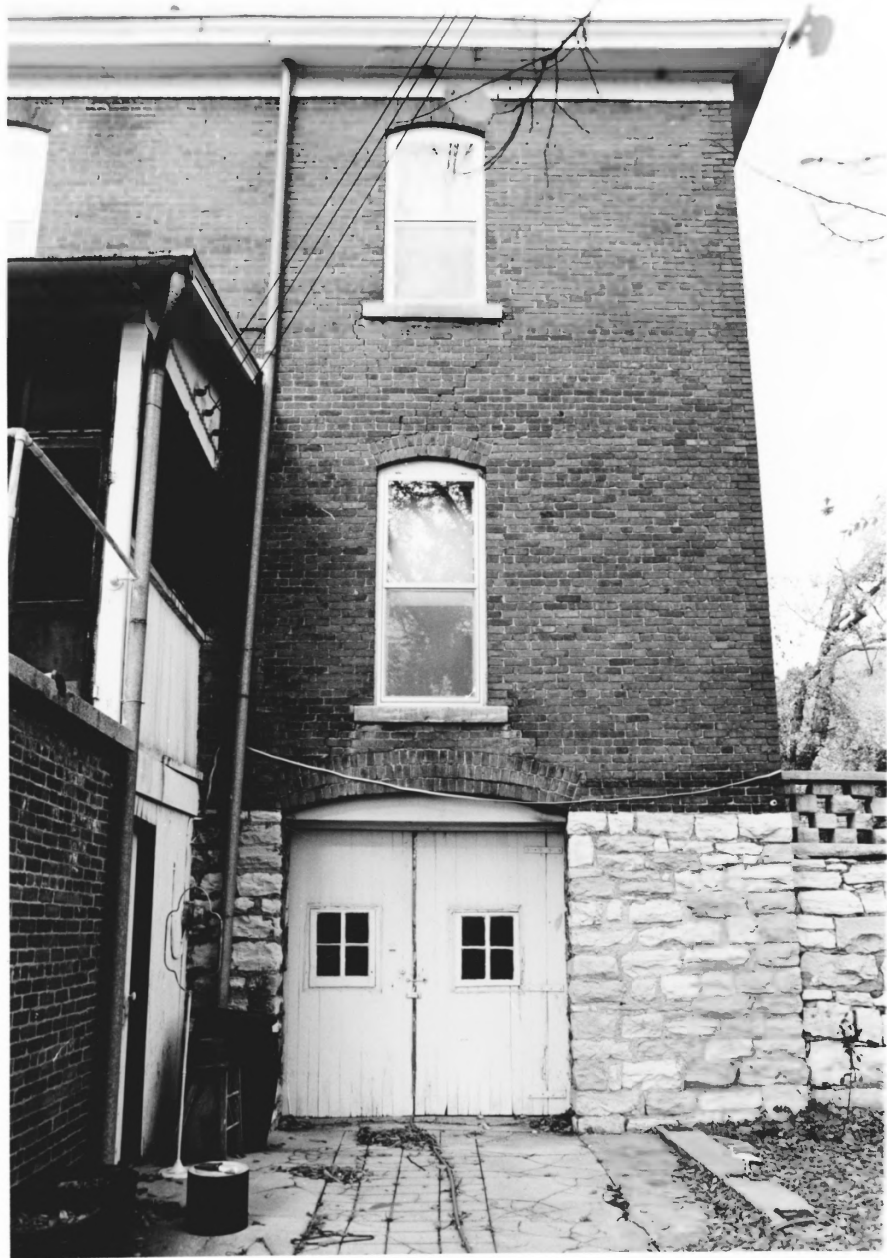
---

Kit Garrett, Pride, Inc.  
Box 4096  
Hopkinsville, Kentucky 42240  
November 1, 1982

---

Photo 13 of 27  
South Elevation





Christian County Multiple  
Resource Area  
Monroe Dalton House  
Christian County, Kentucky

---

Kit Garrett, Pride, Inc.  
Box 4096  
Hopkinsville, Kentucky 42240  
November 1, 1982

---

Photo 14 of 27  
South Elevation, Detail



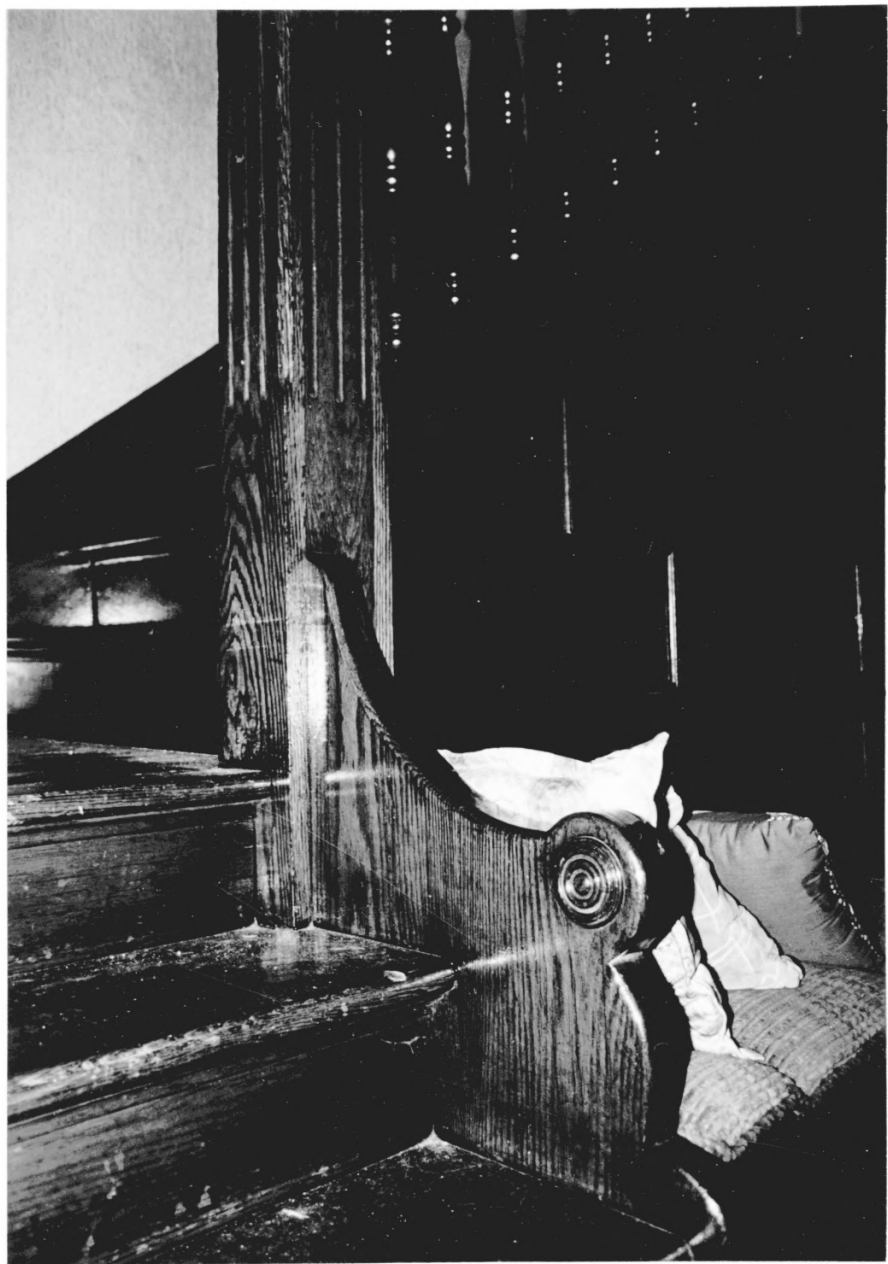
Christian County Multiple  
Resource Area  
Monroe Dalton House  
Christian County, Kentucky

---

Kit Garrett, Pride, Inc.  
Box 4096  
Hopkinsville, Kentucky 42240  
November 1, 1982

---

Photo 15 of 27  
Interior, Stair



Christian County Multiple  
Resouce Area  
Monroe Dalton House  
Christian County, Kentucky

---

Kit Garrett, Pride, Inc.  
Box 4096  
Hopkinsville, Kentucky 42240  
November 1, 1982

---

Photo 16 of 27  
Interior, Stair Detail



Christian County Multiple  
Resource Area  
Monroe Dalton House  
Christian County, Kentucky

---

Kit Garrett, Pride, Inc.  
Box 4096  
Hopkinsville, Kentucky 42240  
November 1, 1982

---

Photo 17 of 27  
Interior, Stair Detail





Christian County Multiple  
Resource Area  
Monroe Dalton House  
Christian County, Kentucky

---

Kit Garrett, Pride, Inc.  
Box 4096  
Hopkinsville, Kentucky 42240  
November 1, 1982

---

Photo 18 of 27  
Interior, Stair



Christian County Multiple  
Resource Area  
Monroe Dalton House  
Christian County, Kentucky

---

Kit Garrett, Pride, Inc.  
Box 4096  
Hopkinsville, Kentucky 42240  
November 1, 1982

---

Photo 19 of 27  
Interior, Palladian Window



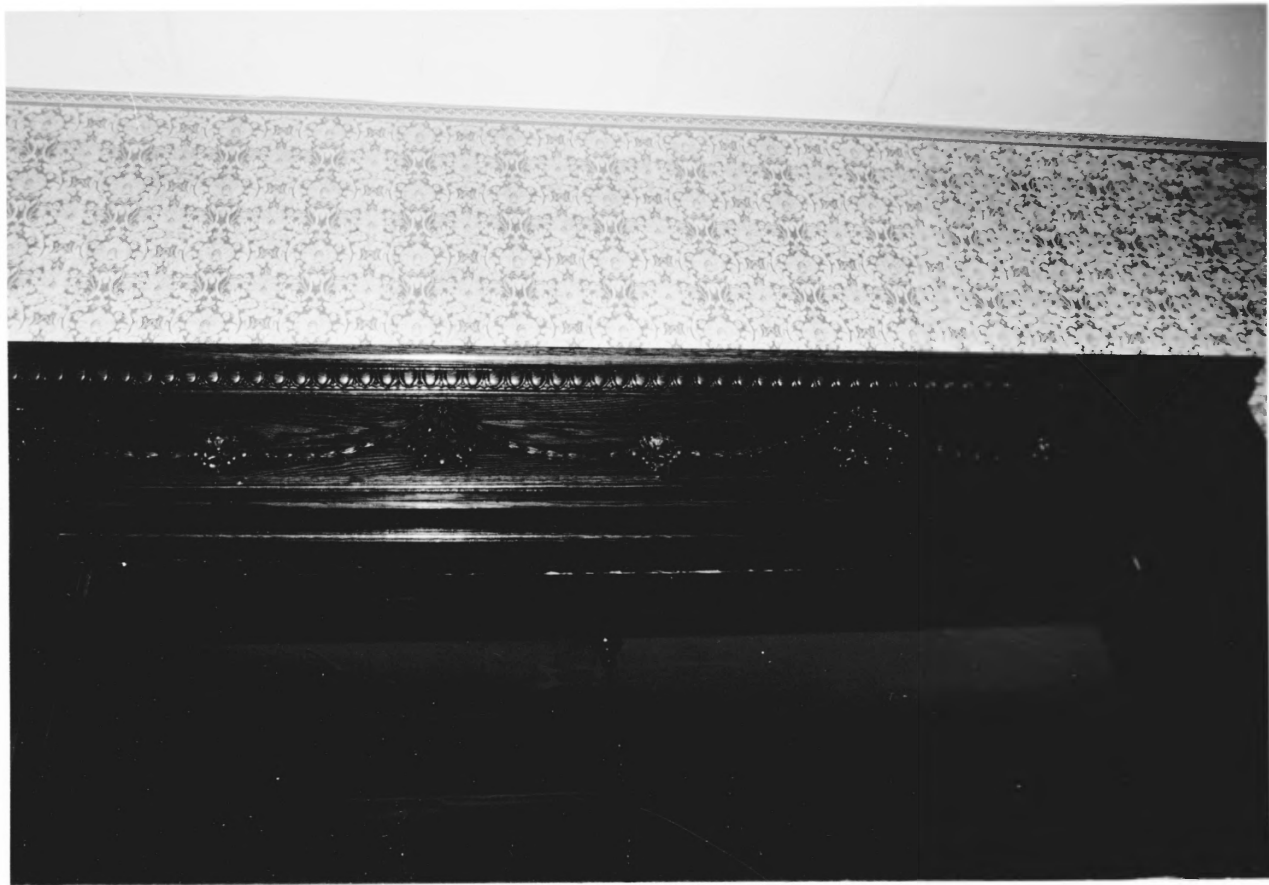
Christian County Multiple  
Resource Area  
Monroe Dalton House  
Christian County, Kentucky

---

Kit Garrett, Pride, Inc.  
Box 4096  
Hopkinsville, Kentucky 42240  
November 1, 1982

---

Photo 20 of 27  
Interior Moldings, First Floor



Christian County Multiple  
Resource Area  
Monroe Dalton House  
Christian County, Kentucky

---

Kit Garrett, Pride, Inc.  
Box 4096  
Hopkinsville, Kentucky 42240  
November 1, 1982

---

Photo 21 of 27  
Interior, First Floor  
Molding Detail





Christian County Multiple  
Resource Area  
Monroe Dalton House  
Christian County, Kentucky

---

Kit Garrett, Pride, Inc.  
Box 4096  
Hopkinsville, Kentucky 42240  
November 1, 1982

---

Photo 22 of 27  
Interior, Dining Room Bay



Christian County Multiple  
Resource Area  
Monroe Dalton House  
Christian County, Kentucky

---

Kit Garrett, Pride, Inc.  
Box 4096  
Hopkinsville, Kentucky 42240  
November 1, 1982

---

Photo 23 of 27  
Interior, First Floor,  
Door Detail



Christian County Multiple  
Resource Area  
Monroe Dalton House  
Christian County, Kentucky

---

Kit Garrett, Pride, Inc.  
Box 4096  
Hopkinsville, Kentucky 42240  
November 1, 1982

---

Photo 24 of 27  
Mantel, Northeast Room-1st floor

---



Christian County Multiple  
Resource Area  
Monroe Dalton House  
Christian County, Kentucky

---

Kit Garrett, Pride, Inc.  
Box 4096  
Hopkinsville, Kentucky 42240  
November 1, 1982

---

Photo 25 of 27  
Mantel-Northeast Room-  
2nd floor





Christian County Multiple  
Resource Area  
Monroe Dalton House  
Christian County, Kentucky

---

Kit Garrett, Pride, Inc.  
Box 4096  
Hopkinsville, Kentucky 42240  
November 1, 1982

---

Photo 26 of 27  
Mantel-detail-Northeast Room,  
2nd floor



Christian County Multiple  
Resouce Area  
Monroe Dalton House  
Christian County, Kentucky

---

Kit Garrett, Pride, Inc.  
Box 4096  
Hopkinsville, Kentucky 42240  
November 1, 1982

---

Photo 27 of 27  
Interior, Second Floor  
Molding Detail