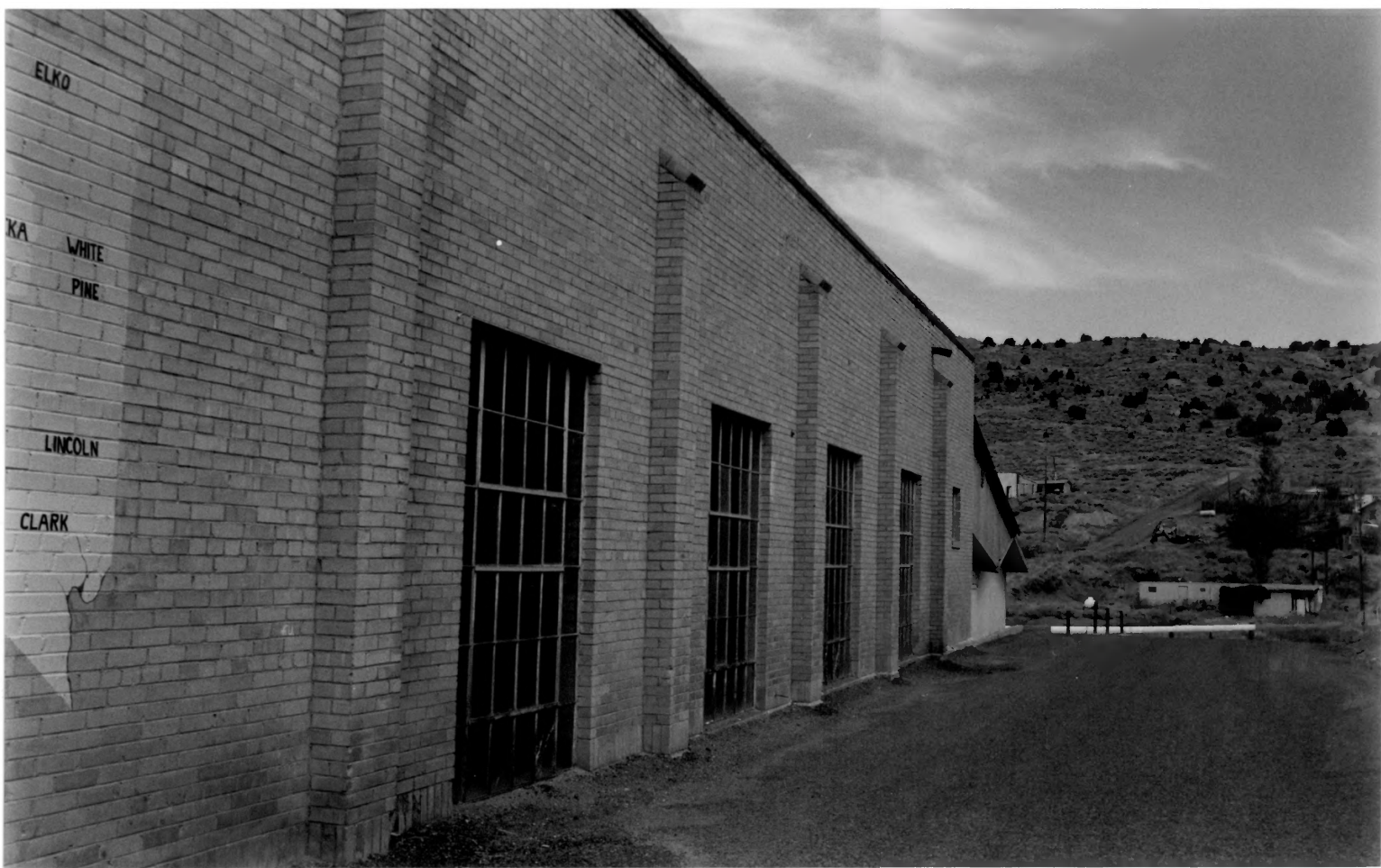






A black and white photograph of a single-story brick building with a gabled roof. The building has two large, multi-paned windows and a small double door at the bottom left. A sign is mounted on the wall between the windows. The building is set against a backdrop of a hillside with sparse vegetation and a utility pole. A white truck is partially visible on the left side of the frame.

**AUSTIN
ELEMENTARY SCHOOL**



ELKO

KA

WHITE

PINE

LINCOLN

CLARK