



1. Milligan-Whitmire House
2. 104 Berryhill Street, Milton, Santa Rosa County, FL
3. Bonnie Flanagan
4. 1985
5. Historic Pensacola Preservation Board
6. Front Facade
7. Picture 1 of 48



1. Chadwick-Hartsell House
2. 202 Berryhill Street, Milton, Santa Rosa County, FL
3. Bonnie Flanagan
4. 1985
5. Historic Pensacola Preservation Board
6. Front Facade
7. Picture 2 of 48





LAW OFFICES  
CLAY & FITZGERALD  
PROFESSIONAL ASSOCIATION

PUBLIC DEFENDER  
JACK BEHR  
1011 1/2 N. 10TH ST.  
WICHITA, KANSAS

1. Chaffin House
2. 202 Oak Street, Milton, Santa Rosa County, FL
3. Bonnie Flanagan
4. 1985
5. Historic Pensacola Preservation Board
6. Front Facade
7. Picture 3 of 48



1. William-Johnson House
2. 208 Berryhill Street, Milton, Santa Rosa County, FL
3. Bonnie Flanagan
4. 1985
5. Historic Pensacola Preservation Board;
6. Front Facade
7. Picture 4 of 48





1. Butler-Potter House
2. 301 Pine Street, Milton, Santa Rosa County, FL
3. Bonnie Flanagan
4. 1985
5. Historic Pensacola Preservation Board
6. Front Facade
7. Picture 5 of 48





1. Ollinger-Cobb House
2. 302 Pine Street, Milton, Santa Rosa County, FL
3. Alan Gantzhorn
4. 1985
5. Historic Pensacola Preservation Board
6. Front Facade
7. Picture 6 of 48



1. McWhortes-Lynn House
2. 302 Berryhill Street, Milton, Santa Rosa County, FL
3. Bonnie Flanagan
4. 1985
5. Historic Pensacola Preservation Board
6. Front Facade
7. Picture 7 of 48





1. Lewis P. Golsen House
2. 203 Oak Street, Milton, Santa Rosa County, FL
3. Alan Gantzhorn
4. 1985
5. Historic Pensacola Preservation Board
6. Front Facade
7. Picture 8 of 48





1. McDougall House Saint Mary's Episcopal Rectory
2. 302 Oak Street, Milton, Santa Rosa County, FL
3. Bonnie Flanagan (picture)
4. 1985
5. Historic Pensacola Preservation Board
6. Front Facade
7. Picture 9 of 48



1. McLeod-Penfield House
2. 206 Berryhill Street, Milton, Santa Rosa County, FL
3. Bonnie Flanagan
4. 1985
5. Historic Pensacola Preservation Board
6. Front Facade
7. Picture 10 of 48





1. Newman-Smith House
2. 306 Santa Rosa Street, Milton, Santa Rosa County, FL
3. Alan Gantzhorn
4. 1985
5. Historic Pensacola Preservation Board
6. Front Facade
7. Picture 11 of 48





1. Collins-Mitchem House
2. 105 Berryhill Street, Milton, Santa Rosa County, FL
3. Alan Gantzhorn
4. 1985
5. Historic Pensacola Preservation Board
6. Front Facade
7. Picture 12 of 48



1. Landrum-Stewart House
2. 106 Elmira Street, Milton, Santa Rosa County, FL
3. Bonnie Flanagan
4. 1985
5. Historic Pensacola Preservation Board
6. Front Facade
7. Picture 13 of 48





1. Mayer-McClure House
2. 105 Elmira Street, Milton, Santa Rosa County, FL
3. Bonnie Flanagan
4. 1985
5. Historic Pensacola Preservation Board
6. Front Facade
7. Picture 14 of 48





1. Brashear House
2. 201 Henry Street, Milton, Santa Rosa County, FL
3. Alan Gantzhorn
4. 1985
5. Historic Pensacola Preservation Board
6. Front Facade
7. Picture 15 of 48



1. Allen-McDonald House
2. 207 Elmira Street, Milton, Santa Rosa County, FL
3. Bonnie Flanagan
4. 1985
5. Historic Pensacola Preservation Board
6. Front Facade
7. Picture 16 of 48





Elliott Stewart  
ATTORNEY AT LAW

James Byron Scott  
ATTORNEY AT LAW

1. Brown-Stewart House
2. 406 Oak Street, Milton, Santa Rosa County, FL
3. Bonnie Flanagan
4. 1985
5. Historic Pensacola Preservation Board
6. Front Facade
7. Picture 17 of 48



1. William Bonifay House
2. 104 Oak Street, Milton, Santa Rosa County, FL
3. Alan Gantzhorn
4. 1985
5. Historic Pensacola Preservation Board
6. Front Facade
7. Picture 18 of 48





1. Presbyterian Manse
2. 302 Canal Street, Milton, Santa Rosa County, FL
3. Alan Gantzhorn
4. 1985
5. Historic Pensacola Preservation Board
6. Front Facade
7. Picture 19 of 48



1. Allen-Willey House
2. 304 Oak Street, Milton, Santa Rosa County, FL
3. Bonnie Flanagan
4. 1985
5. Historic Pensacola Preservation Board
6. Front Facade
7. Picture 20 of 48





1. Smith-Faulkner House
2. 401 Oak Street, Milton, Santa Rosa County, FL
3. Bonnie Flanagan
4. 1985
5. Historic Pensacola Preservation Board
6. Front Facade
7. Picture 21 of 48



1. Plant House
2. 215 Pike Street, Milton, Santa Rosa County, FL
3. Alan Gantzhorn
4. 1985
5. Historic Pensacola Preservation Board
6. Front Facade
7. Picture 22 of 48





1. Faircloth Rental
2. 100 Escambia Street, Milton, Santa Rosa County, FL
3. Alan Gantzhorn
4. 1985
5. Historic Pensacola Preservation Board
6. Front Facade
7. Picture 23 of 48



1. T. W. Jones House
2. 107 Henry Street, Milton, Santa Rosa County, FL
3. Alan Gantzhorn
4. 1985
5. Historic Pensacola Preservation Board
6. Front Facade
7. Picture 24 of 48





1. T. W. Jones House
2. 206 Combs Street, Milton, Santa Rosa County, FL
3. Bonnie Flanagan
4. 1985
5. Historic Pensacola Preservation Board
6. Front Facade
7. Picture 25 of 48



1. S. G. Collins Rental
2. 204 Combs Street, Milton, Santa Rosa County, FL
3. Bonnie Flanagan
4. 1985
5. Historic Pensacola Preservation Board
6. Front Facade
7. Picture 26 of 48





1. Carson McCombs House
2. 202 Pike Street, Milton, Santa Rosa County, FL
3. Alan Gantzhorn
4. 1985
5. Historic Pensacola Preservation Board
6. Front Facade
7. Picture 27 of 48



1. Thames House
2. 104 Canal Street, Milton, Santa Rosa Co., FL
3. Alan Gantzhorn
4. 1985
5. Historic Pensacola Preservation Board
6. Front Facade
7. Picture 28 of 48





1. H. Mason Smith House
2. 106 Canal Street, Milton, Santa Rosa County, FL
3. Alan Gantzhorn
4. 1985
5. Historic Pensacola Preservation Board
6. Front Facade
7. Picture 29 of 48



1. Louisville and Nashville Depot
2. 206 Henry Street, Milton, Santa Rosa County, FL
3. Alan Gantzhorn
4. 1985
5. Historic Pensacola Preservation Board
6. Side View looking South
7. Picture 30 of 48





1. Santa Rosa County Grade School
2. 603 Canal Street, Milton, Santa Rosa County, FL
3. Bonnie Flanagan
4. 1985
5. Historic Pensacola Preservation Board
6. Front Facade
7. Picture 31 of 48



BERRYHILL ELEMENTARY SCHOOL

1. Berryhill Elementary School
2. 406 Berryhill Street, Milton, Santa Rosa County, FL
3. Bonnie Flanagan
4. 1985
5. Historic Pensacola Preservation Board
6. Front Facade
7. Picture 32 of 48



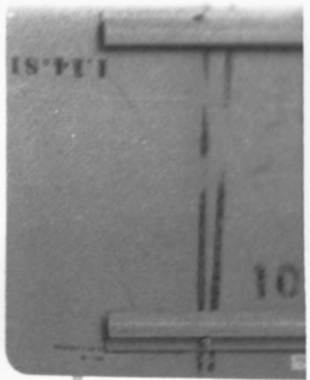


1. Santa Rosa County Courthouse
2. 801 Caroline Street, Milton, Santa Rosa County, FL
3. Alan Gantzhorn
4. 1985
5. Historic Pensacola Preservation Board
6. Front Facade
7. Picture 33 of 48



EXCHANGE HOTEL

EXCHANGE HOTEL



ELMIRA ST



1. Exchange Hotel
2. 300 Elmira Street, Milton, Santa Rosa County, FL
3. Bonnie Flanagan (picture)
4. 1985
5. Historic Pensacola Preservation Board
6. Front Facade
7. Picture 34 of 48





1. Imogene Theatre
2. 810, 810½, 812 Caroline Street, Milton, Santa Rosa County , FL
3. Bonnie Flanagan
4. 1985
5. Historic Pensacola Preservation Board
6. Front Facade
7. Picture 35 of 48



UNITED  
FARM  
REAL ESTATE

MIRMAN IDC

TEMP  
90  
←

1. Fisher and Hamilton Store Building
2. 200 Willing Street, Milton, Santa Rosa County, FL
3. Bonnie Flanagan
4. 1985
5. Historic Pensacola Preservation Board
6. Front Facade
7. Picture 36 of 48





1. Fisher and Hamilton Store Building
2. 202 Willing Street, Milton, Santa Rosa County, FL
3. Bonnie Flanagan
4. 1985
5. Historic Pensacola Preservation Board
6. Front Facade
7. Picture 37 of 48



Jean's

Beauty  
Shop

1. D. T. Williams and Company Office Building
2. 102 Willing Street, Milton, Santa Rosa County, FL
3. Bonnie Flanagan
4. 1985
5. Historic Pensacola Preservation Board
6. Front Facade
7. Picture 38 of 48





1. Saint Mary's Episcopal Church
2. 301 Oak Street, Milton, Santa Rosa County, FL
3. Bonnie Flanagan (picture)
4. 1985
5. Historic Pensacola Preservation Board
6. Front Facade
7. Picture 39 of 48



1. First Presbyterian Church
2. 205 Elmira Street, Milton, Santa Rosa County, FL
3. Bonnie Flanagan
4. 1985
5. Historic Pensacola Preservation Board
6. Front Facade
7. Picture 40 of 48