



UNITED STATES DEPARTMENT OF THE INTERIOR  
NATIONAL PARK SERVICE

NATIONAL REGISTER OF HISTORIC PLACES  
PROPERTY PHOTOGRAPH FORM

(Type all entries - attach to or enclose with photograph)

STATE Kansas	
COUNTY Chase	
FOR NPS USE ONLY	
ENTRY NUMBER 71.4.20.0022	DATE 4/16/71

1. NAME

COMMON: Spring Hill Farm and Stock Ranch House  
AND/OR HISTORIC: Jones Ranch House

2. LOCATION

STREET AND NUMBER: Three miles north of Strong City on K-177  
NE 1/4, Sec. 6, T 19 S, R 8 E

CITY OR TOWN:  
Strong City

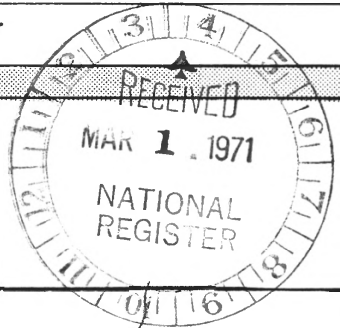
STATE: Kansas	CODE 66869	COUNTY: Chase	CODE 017
------------------	---------------	------------------	-------------

3. PHOTO REFERENCE

PHOTO CREDIT: Kansas State Historical Society Staff  
DATE OF PHOTO: 1969  
NEGATIVE FILED AT: Chase County File, Historic Sites Survey  
Kansas State Historical Society

4. IDENTIFICATION

DESCRIBE VIEW, DIRECTION, ETC.  
Rear view from southwest



SEE INSTRUCTIONS



UNITED STATES DEPARTMENT OF THE INTERIOR  
NATIONAL PARK SERVICE

NATIONAL REGISTER OF HISTORIC PLACES  
PROPERTY PHOTOGRAPH FORM

(Type all entries - attach to or enclose with photograph)

STATE <b>Kansas</b>	
COUNTY <b>Chase</b>	
FOR NPS USE ONLY	
ENTRY NUMBER <b>71-4-20-0022</b>	DATE <b>4/16/71</b>

SEE INSTRUCTIONS

1. NAME

COMMON: **Spring Hill Farm and Stock Ranch House**  
AND/OR HISTORIC: **Jones Ranch House**

2. LOCATION

STREET AND NUMBER: **Three miles north of Strong City on K-177.  
NE 1/4, Sec. 6, T 19 S, R 8 E**

CITY OR TOWN: **Strong City**

STATE: <b>Kansas</b>	CODE <b>66869</b>	COUNTY: <b>Chase</b>	CODE <b>017</b>
-------------------------	----------------------	-------------------------	--------------------

3. PHOTO REFERENCE

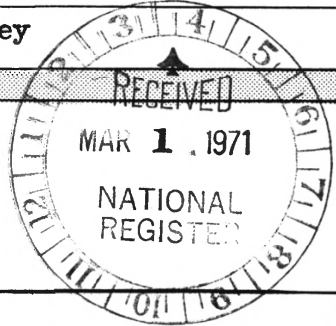
PHOTO CREDIT: **Kansas State Historical Society Staff**

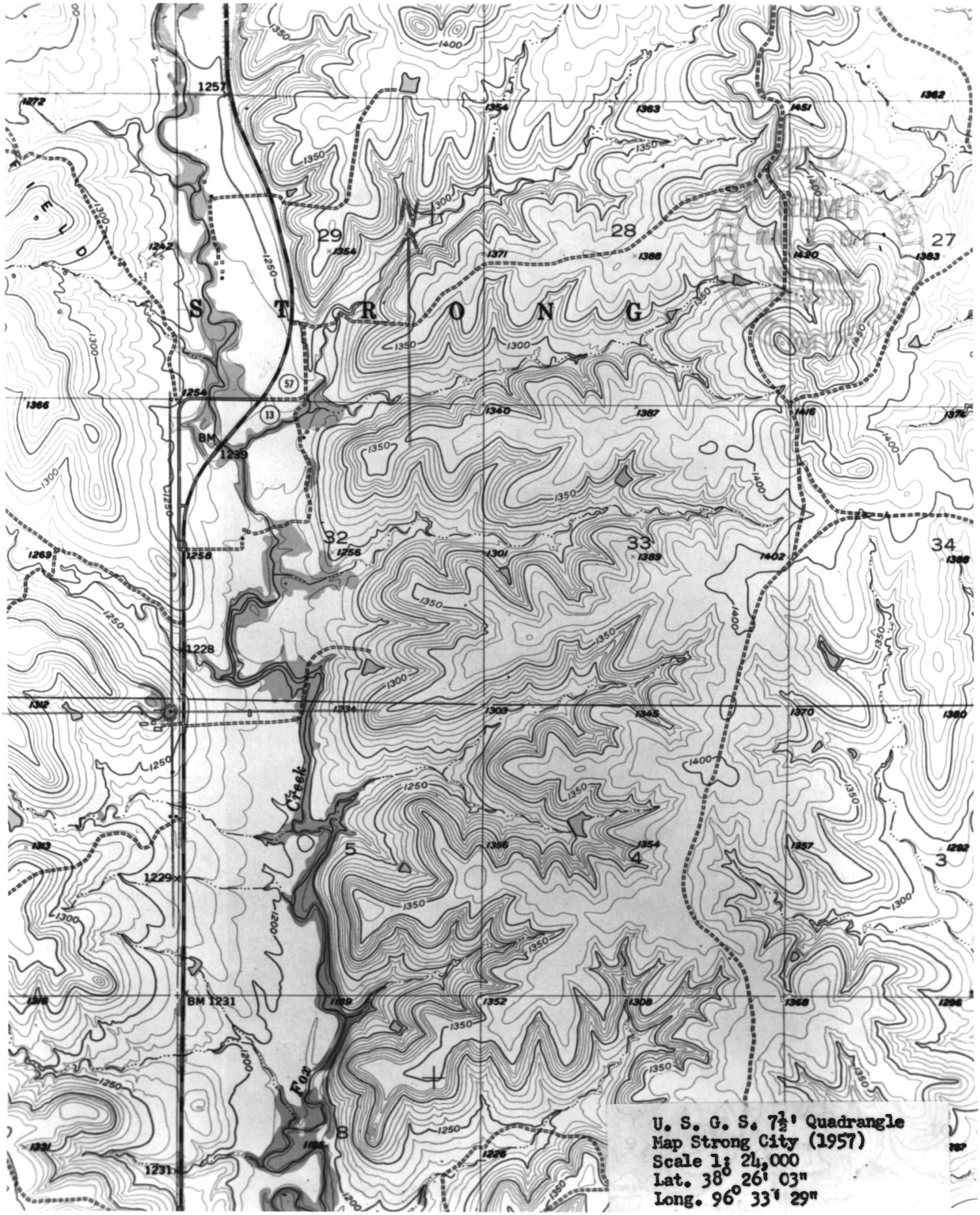
DATE OF PHOTO: **1969**

NEGATIVE FILED AT: **Chase County File, Historic Sites Survey  
Kansas State Historical Society**

4. IDENTIFICATION

DESCRIBE VIEW, DIRECTION, ETC.  
**Front view from southeast**





U. S. G. S. 7.5' Quadrangle  
Map Strong City (1957)  
Scale 1: 24,000  
Lat. 38° 26' 03"  
Long. 96° 33' 29"

### NATIONAL REGISTER OF HISTORIC PLACES

### PROPERTY MAP FORM

(Type all entries - attach to or enclose with map)

STATE	Kansas
COUNTY	Chase
FOR NPS USE ONLY	
ENTRY NUMBER	DATE

71.4.20.0032 4/16/71

#### 1. NAME

COMMON: Spring Hill Farm and Stock Ranch house

AND/OR HISTORIC: Jones Ranch house

#### 2. LOCATION

STREET AND NUMBER: Three miles north of Strong City on K-177  
NE 1/4, Sec. 6, T 19 S, R 8 E

CITY OR TOWN: Strong City vicinity

STATE:	Kansas 66869	CODE	COUNTY:	Chase	CODE
		20			017

#### 3. MAP REFERENCE

SOURCE: U. S. G. S. 7 $\frac{1}{2}$ ' Quadrangle, Strong City, Kansas

SCALE: 1: 24,000

DATE: 1957

#### 4. REQUIREMENTS

TO BE INCLUDED ON ALL MAPS

1. Property boundaries where required.
2. North arrow.
3. Latitude and longitude reference.



SEE INSTRUCTIONS