



Clark Cotton Mill/Columbia Narrow Fabrics Company
Factory, Main Street
Shannock Historic District
Richmond, Rhode Island

Robert O. Christensen
Negative filed: Rhode Island Historical
Preservation Commission

Exterior from the east

#1

October, 1978



Clark Cotton Mill/ Columbia Narrow Fabrics Company
Factory, Main Street
Shannock Historic District
Richmond, Rhode Island

Robert O. Christensen
Negative filed: Rhode Island Historical
Preservation Commission

Exterior from the southwest

#2

October, 1978

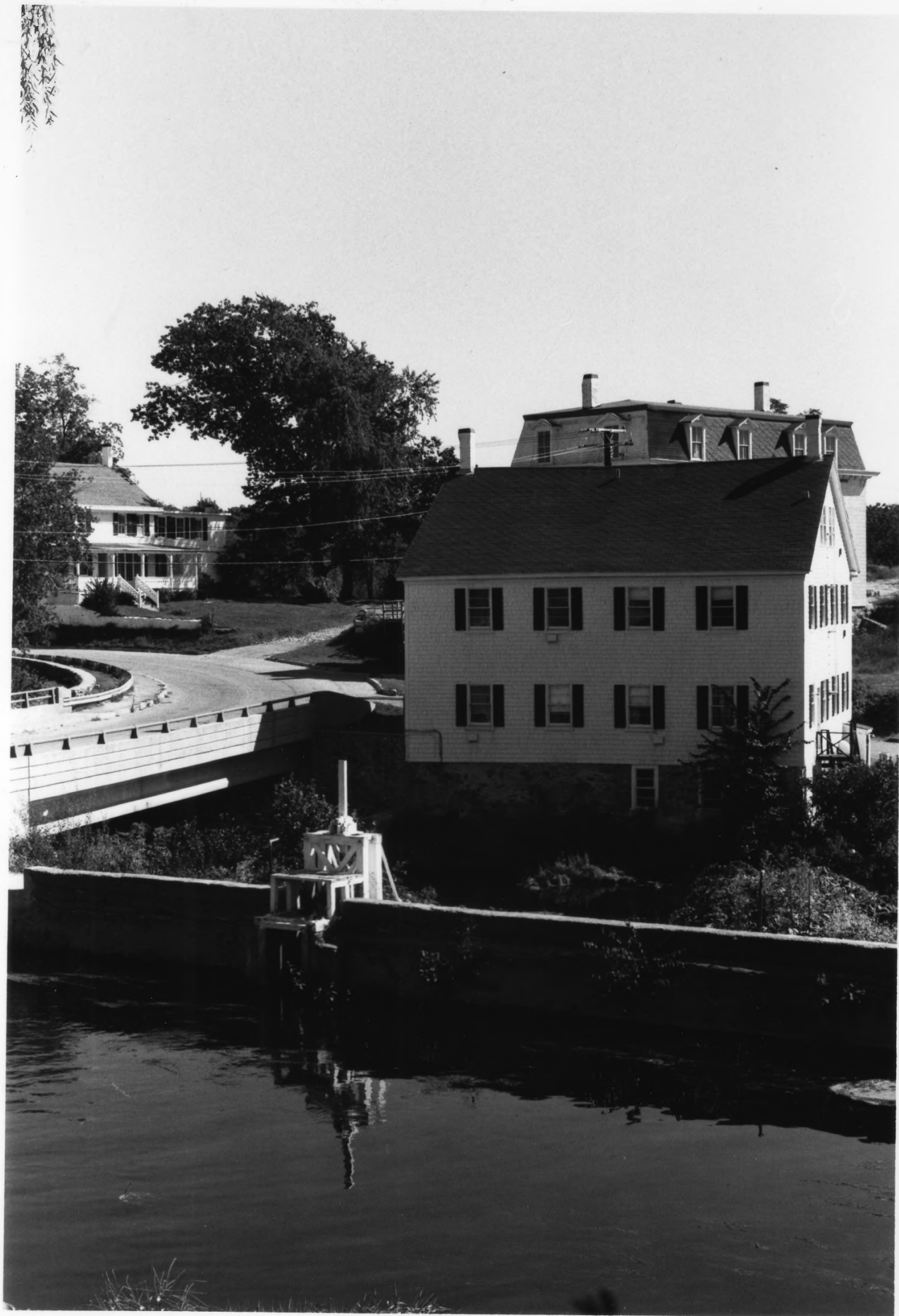


East view across Pawcatuck River showing horseshoe dam,
carpenter shop, Clark Cotton Mill/Columbia
Narrow Fabrics Company plant, and other buildings
along Main Street
Shannock Historic District
Richmond and Charlestown, Rhode Island

Robert O. Christensen
Negative filed: Rhode Island Historical
Preservation Commission

#3

November, 1978

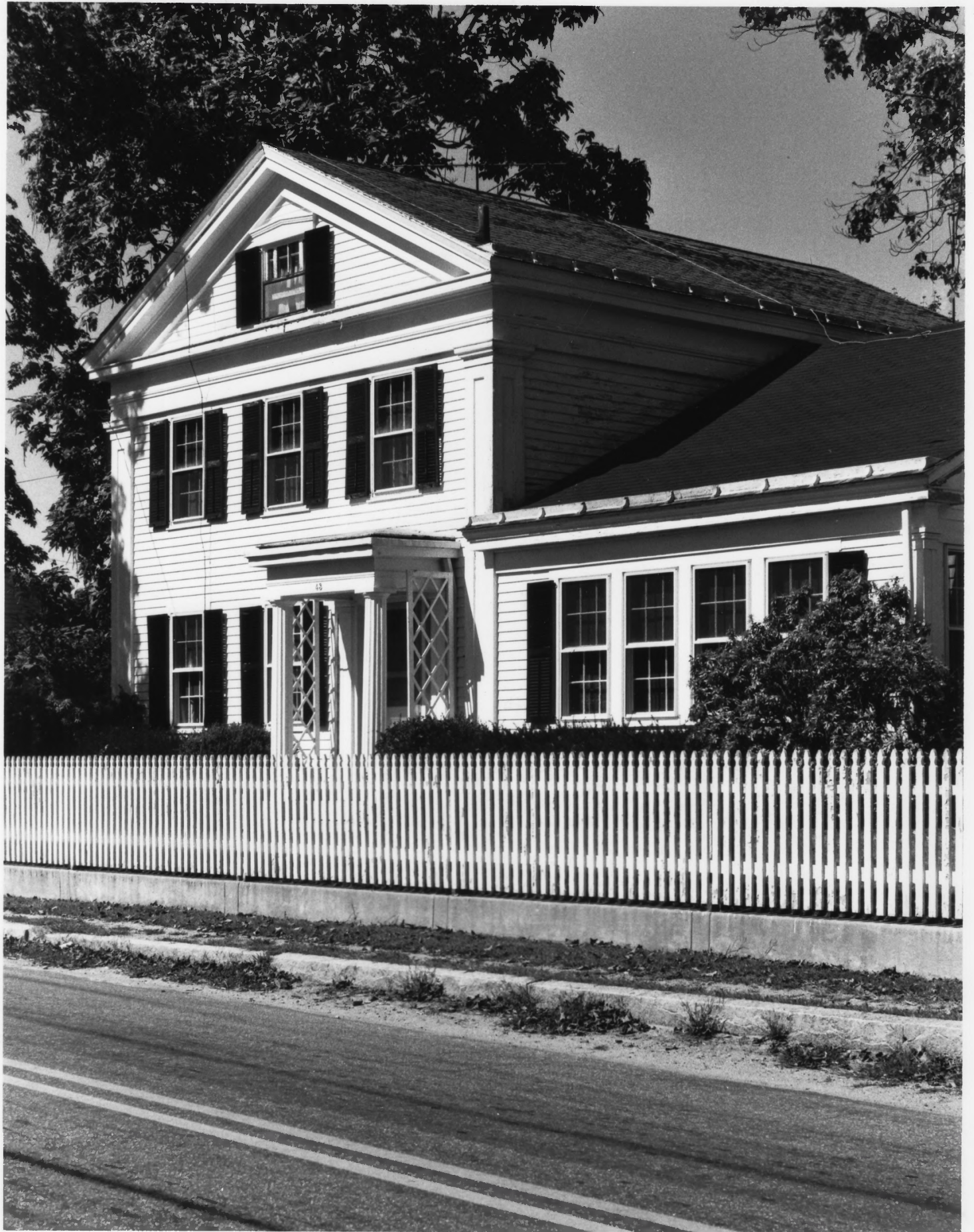


Northwest view across Clark Cotton Mill power canal
and Pawcatuck River showing Clark's Hall, Hoxsie
House, and Hoxsie tenement block.
Shannock Historic District
Richmond and Charlestown, Rhode Island

Robert O. Christensen
Negative filed: Rhode Island Historical
Preservation Commission

#4

October, 1978



Charles Clarke House, Main Street
Shannock Historic District
Richmond, Rhode Island

Robert O. Christensen
Negative filed: Rhode Island Historical
Preservation Commission

Exterior from the southeast

#5

October, 1978



North side of Main Street, showing Charles Clarke House
(left), Clark Store (center), and Simeon P. Clark
House (right)
Shannock Historic District
Richmond, Rhode Island

Robert O. Christensen
Negative filed: Rhode Island Historical
Preservation Commission

View from the southwest

#6

October, 1978



Mill Housing, Main Street
Shannock Historic District
Richmond, Rhode Island

Robert O. Christensen
Negative filed: Rhode Island Historical
Preservation Commission

Exterior from the southeast

#7

October 1978



Carmichael Mill
Shannock Historic District
Richmond, Rhode Island

Robert O. Christensen
Negative filed; Rhode Island Historical
Preservation Commission

Exterior from the northeast

#8

October, 1978



Late Victorian Houses, Main Street
Shannock Historic District
Richmond, Rhode Island

Robert O. Christensen
Negative filed: Rhode Island Historical
Preservation Commission

East view

#9

October, 1978



Samuel A. Hoxsie and Hoxsie Houses, Main Street
Shannock Historic District
Charlestown, Rhode Island

Robert O. Christensen
Negative filed: Rhode Island Historical
Preservation Commission

View from the southwest

#10

October, 1978



Houses on south side of Main Street
Shannock Historic District
Charlestown, Rhode Island

Robert O. Christensen
Negative filed: Rhode Island Historical
Preservation Commission

View from the northeast

#11

October, 1978



Hoxie Tenement Block, Main Street
Shannock Historic District
Charlestown, Rhode Island

Robert O. Christensen
Negative filed: Rhode Island Historical
Preservation Commission

Exterior from the northeast

#12

October, 1978