



TAXICAB DRIVERS & GARAGE EMPLOYEES  
UNION LOCAL No. 426

MORRIS  
AND  
CO

Phone  
539 5036

PAINTING  
REPAIRS  
EST. 1880

BALTO  
WASH  
PKWY

ON WAY

S GREENE ST

Ridgley's Delight Historic District

1/22

Baltimore City, Maryland

R. Lippenholtz, 1976

JUN 6 1976

FEB 13 1980

Neg. at MHT

No. 600 Washington Boulevard (on Russell Street at intersection with Portland and Washington) looking west along Washington boulevard, north side.



Ridgley's Delight Historic District

Baltimore City, Maryland

JUN 6 1980

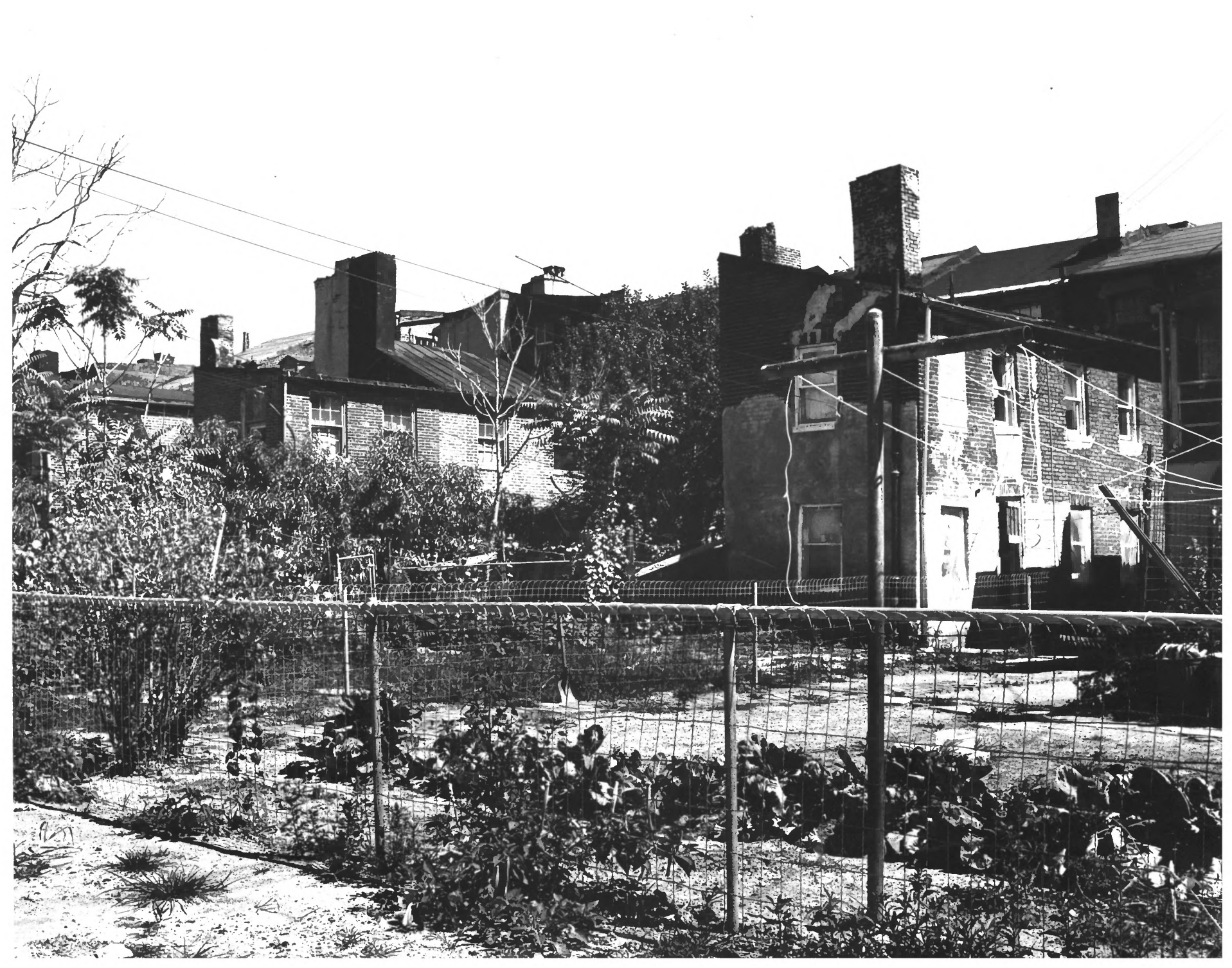
R. Lippenholtz, 1976

Neg. at MHT

337-39 S. Fremont Avenue, west facade

FEB 13 1980

*3/22*



Ridgley's Delight Historic District

Baltimore City, Maryland

R. Lippenholtz, 1976

JUN 6 1980

Neg. at MHT

Back Buildings, 600 block S. Paca Street,  
north side

*3/22*

FEB 13 1980



Ridgley's Delight Historic District

Baltimore City, Maryland

R. Lippenholtz, 1976

JUN 6 1980

Neg. at MHT

Washington Boulevard, south side, No.s

684 (left) to 600 (far right)

FEB 13 1980

4/22





Ridgley's Delight Historic District

Baltimore City, Maryland

R. Lippenholtz, 1976

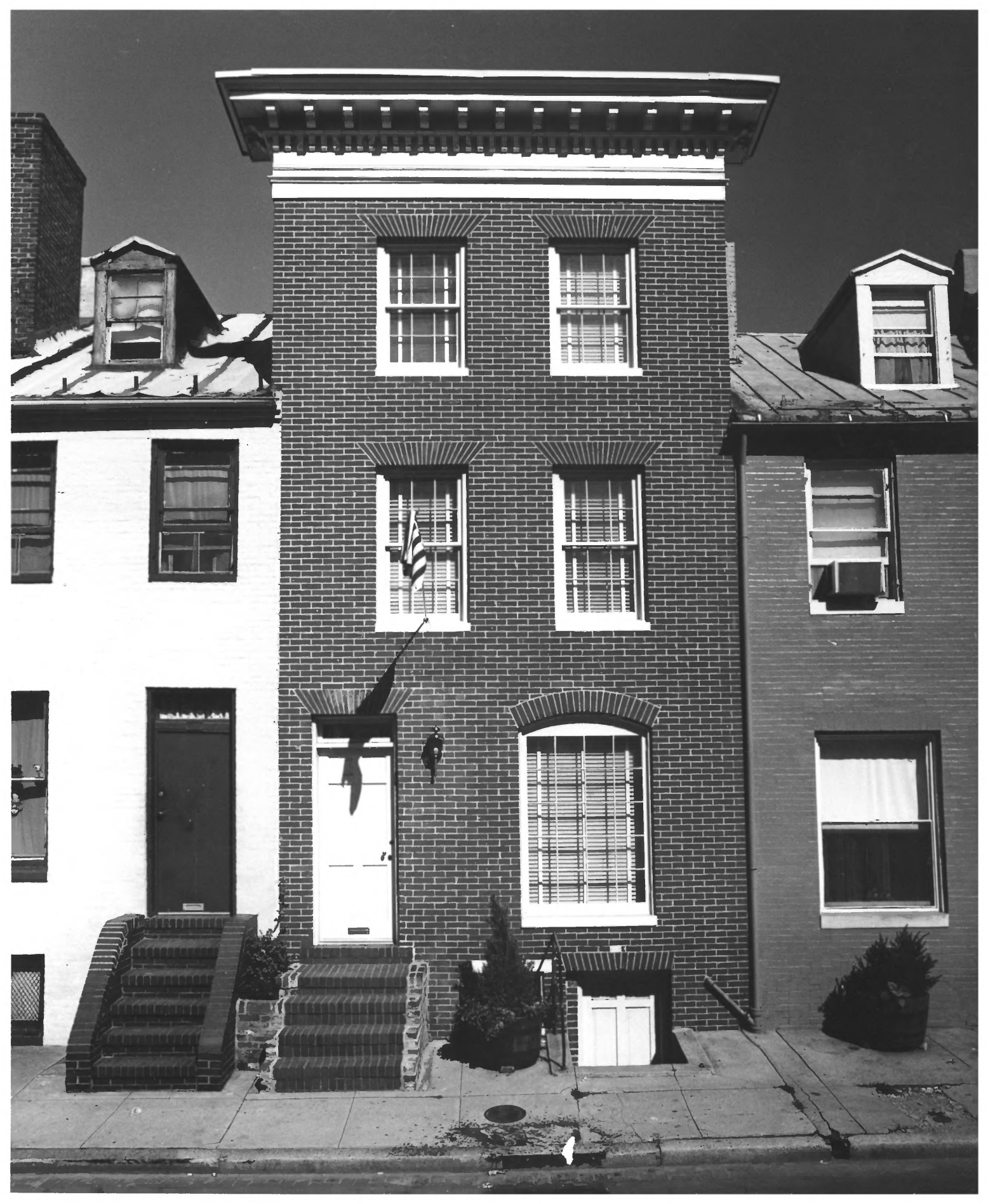
Neg. at MHT

641 Washington Boulevard, Warner St. Facade.

JUN 6 1980

5/22

FEB 13 1980



Ridgley's Delight Historic District

Baltimore City, Maryland

R. Lippenholtz, 1976

JUN 6 1980

Neg. at MHT

676 Washington Boulevard

FEB 13 1980

*6/22*



1501  
S. PACA ST

ONE WAY

© JAMES TRACY

Ridgley's Delight Historic District

Baltimore City, Maryland

R. Lippenholtz, 1976

Neg. at MHT

601 S. Paca Street

JUN 6 1980

*7/22*

FEB 13 1980



655 SNYDER COMPANY 655  
RAILWAY EQUIPMENT & SUPPLIES

Ridgley's Delight Historic District

Baltimore City, Maryland

R. Lippenholtz, 1976

JUN 6 1980

Neg. at MHT

653, 655 W. Pratt Street, Snyder Co.

8/22

FEB 13 1980





Ridgley's Delight Historic District

Baltimore City, Maryland

R. Lippenholtz, 1976

JUN 6 1980

Neg. at MHT

Corner S. Paca and Warner, 551 S. Paca in  
Center with chimneys

*9/22*

FEB 13 1980



Ridgley's Delight Historic District

Baltimore City, Maryland

R. Lippenholtz, 1976

JUN 6 1980

Neg. at MHT

633-645 (south side) Melvin Drive (left to  
right)

*10/22*

FEB 13 1980



Ridgley's Delight Historic District

Baltimore City, Maryland

R. Lippenholtz, 1976

JUN 6 1980

Neg. at MHT

645 and 647 Washington Boulevard

11/22

FEB 13 1980



Ridgley's Delight Historic District

Baltimore City, Maryland

R. Lippenholtz, 1976

Neg. at MHT

Washington Boulevard, south side, No.s

649 (left) to 671 (r)

*12/22*

JUN 8

FEB 13 1980





Ridgley's Delight Historic District

Baltimore City, Maryland

R. Lippenholtz, 1976

JUN 6 1980

Neg. at MHT

Melvin Drive, north side, No's. 630 (R) to  
642 (left).

13/22

FEB 13 1980



Ridgley's Delight Historic District

Baltimore City, Maryland

R. Lippenholtz, 1976

JUN 6 1980

Neg. at MHT

632 (R) to 660 Dover Street, North side

14/22

FEB 13 1980



Ridgley's Delight Historic District

Baltimore City, Maryland

R. Lippenholtz, 1976

JUN 6 1980

Neg. at MHT

Walking alley between (parallel to) Melvin  
Drive and Portland Street, 600 Block looking  
west from Emory Street

*15/22* FEB 13 1980



Ridgley's Delight Historic District

Baltimore City, Maryland

JUN 6 1980

R. Lippenholtz, 1976

Neg. at MHT

Emory Street, looking north from Washington  
Boulevard, toward 630 Melvin Drive (center)

*16/22*

FEB 13 1980





Ridgley's Delight Historic District  
Baltimore City, Maryland

R. Lippenholtz, 1976

JUN 6 1980

Neg. at MHT

600 Block Portland Street, South side, back  
buildings of No.s 604, 606, 608, 610

Washington Boulevard

17/22

FEB 13 1980



ICE COLD BEER TO GO  
PACKAGE GOODS

COOP Date

PROG  
GROSS  
RC

RC

RC

PENN ST

2 2

Ridgley's Delight Historic District

Baltimore City, Maryland

R. Lippenholtz, 1976

JUN 6 1980

Neg. at MHT

Intersection of Penn St. and Washington Blvd  
toward 300 block Penn St. east side

18/22

FEB 13 1980

HOUSES  
BEING RESTORED  
FOR SALE OR RENT  
B. Jane Sharp Properties, Inc.  
Call 305-9533-1144



Ridgley's Delight Historic District

Baltimore City, Maryland

R. Lippenholtz, 1976

Neg. at IMHT

Dover Street, south side, Nos. 705(L) to  
717 (R).

JUN 6 1980

FEB 13 1980

19  
/22

LIONS CLUB  
RECREATION CENTER  
BUREAU OF RECREATION

NO  
ENTERING  
AT  
ANY TIME



Ridgley's Delight Historic District

Baltimore City, Maryland

R. Lippenholtz, 1976

FEB 13 1980

NEg. at MHT

Lions Club Recreation Center

657-63 Washington Boulevard

formerly Columbia Avenue, Methodist  
Church

JUN

6 1980

20/22





Ridgley's Delight Historic District

Baltimore City, Maryland

R. Lippenholtz, 1976

JUN 6 1980

Neg. at MHT

635-637 Washington Boulevard

FEB 3 1980

21/22



Ridgley's Delight Historic District

Baltimore City, Maryland

JUN

6

1980

R. Lippenholtz, 1976

Neg. at MHT

314 (L) to 306 Penn Street, West side

*23/22*

FEB

13

1980