

United States Department of the Interior
National Park Service

NATIONAL REGISTER OF HISTORIC PLACES
REGISTRATION FORM

This form is for use in nominating or requesting determinations for individual properties and districts. See instructions in How to Complete the National Register of Historic Places Registration Form (National Register Bulletin 16A). Complete each item by marking "X" in the appropriate box or by entering the information requested. If any item does not apply to the property being documented, enter "N/A" for "not applicable." For functions, architectural classification, materials, and areas of significance, enter only categories and subcategories from the instructions. Place additional entries and narrative items on continuation sheets (NPS Form 10-900a). Use a typewriter, word processor, or computer, to complete all items.

1. Name of Property

historic name ST. MARY'S EPISCOPAL CHURCH

other names/site number St. Mary's Parish

2. Location

street & number 108 N.W. Horry Street

N/A not for publication

city or town Madison

N/A vicinity

state FLORIDA code FL county Madison code 079 zip code 32340

3. State/Federal Agency Certification

As the designated authority under the National Historic Preservation Act, as amended, I hereby certify that this nomination request for determination of eligibility meets the documentation standards for registering properties in the National Register of Historic Places and meets the procedural and professional requirements set forth in 36 CFR Part 60. In my opinion, the property meets does not meet the National Register criteria. I recommend that this property be considered significant nationally statewide locally. (See continuation sheet for additional comments.)

Judith L. Pettit, Deputy, SHPO 3-11-97
Signature of certifying official/Title Date

Florida State Historic Preservation Officer, Division of Historical Resources
State or Federal agency and bureau

In my opinion, the property meets does not meet the National Register criteria. (See continuation sheet for additional comments.)

Signature of certifying official/Title Date

State or Federal agency and bureau

4. National Park Service Certification

I hereby certify that the property is:

entered in the National Register See continuation sheet

determined eligible for the National Register See continuation sheet.

determined not eligible for the National Register See continuation sheet.

removed from the National Register.

other, (explain) _____

for Signature of the Keeper

Date of Action

Mary M. Wagner

4/28/97

St. Mary's Episcopal Church
Name of Property

Madison Co., FL
County and State

5. Classification

Ownership of Property
(Check as many boxes as apply)

- private
- public-local
- public-State
- public-Federal

Category of Property
(Check only one box)

- buildings
- district
- site
- structure
- object

Number of Resources within Property
(Do not include any previously listed resources in the count)

Contributing	Noncontributing	
1	0	buildings
0	0	sites
0	0	structures
0	0	objects
1	0	total

Name of related multiple property listings
(Enter "NA" if property is not part of a multiple property listing.)

Number of contributing resources previously listed in the National Register

Florida's Carpenter Gothic Episcopal Churches

0

6. Function or Use

Historic Functions
(Enter categories from instructions)

RELIGION: religious facility

Current Functions
(Enter categories from instructions)

RELIGION: religious facility

7. Description

Architectural Classification
(Enter categories from instructions)

Late Gothic Revival

Materials
(Enter categories from instructions)

foundation BRICK piers
walls WOOD
roof ASPHALT shingles
other GLASS

Narrative Description

(Describe the historic and current condition of the property on one or more continuation sheets.)

8. Statement of Significance

Applicable National Register Criteria

(Mark "X" in one or more boxes for the criteria qualifying the property for National Register listing.)

- A** Property is associated with events that have made a significant contribution to the broad patterns of our history.
- B** Property is associated with the lives of persons significant in our past.
- C** Property embodies the distinctive characteristics of a type, period, or method of construction or represents the work of a master, or possesses high artistic values, or represents a significant and distinguishable entity whose components lack individual distinction.
- D** Property has yielded, or is likely to yield information important in prehistory or history.

Criteria Considerations

(Mark "X" in all the boxes that apply.)

Property is:

- A** owned by a religious institution or used for religious purposes.
- B** removed from its original location.
- C** a birthplace or grave.
- D** a cemetery.
- E** a reconstructed building, object, or structure.
- F** a commemorative property.
- G** less than 50 years of age or achieved significance within the past 50 years

Narrative Statement of Significance

(Explain the significance of the property on one or more continuation sheets.)

9. Major Bibliographical References

Bibliography

Cite the books, articles, and other sources used in preparing this form on one or more continuation sheets.)

Previous documentation on file (NPS):

- preliminary determination of individual listing (36 CFR 38) has been requested
- previously listed in the National Register
- previously determined eligible by the National Register
- designated a National Historic Landmark
- recorded by Historic American Buildings Survey # _____
- recorded by Historic American Engineering Record

Areas of Significance

(Enter categories from instructions)

ARCHITECTURE

Period of Significance

1879

Significant Dates

1879

Significant Person

N/A

Cultural Affiliation

N/A

Architect/Builder

unknown

Primary location of additional data:

- State Historic Preservation Office
- Other State Agency
- Federal agency
- Local government
- University
- Other

Name of Repository

St. Mary's Episcopal Church
Name of Property

Madison Co., FL
County and State

10. Geographical Data

Acreeage of Property less than one

UTM References

(Place additional references on a continuation sheet.)

1	1	7	2	6	8	2	6	0	3	3	7	3	1	3	0
Zone	Easting					Northing									
2															

3															
Zone	Easting					Northing									
4															

See continuation sheet

Verbal Boundary Description

(Describe the boundaries of the property on a continuation sheet.)

Boundary Justification

(Explain why the boundaries were selected on a continuation sheet.)

11. Form Prepared By

name/title Robert O. Jones/Historic Sites Specialist

organization Bureau of Historic Preservation date March 1997

street & number R.A. Gray Building, 500 S. Bronough Street telephone (904) 487-2333

city or town Tallahassee state Florida zip code 32399-0250

Additional Documentation

Submit the following items with the completed form:

Continuation Sheets

Maps

A USGS map (7.5 or 15 minute series) indicating the property's location.

A Sketch map for historic districts and properties having large acreage or numerous resources.

Photographs

Representative black and white photographs of the property.

Additional items

(check with the SHPO or FPO for any additional items)

Property Owner

(Complete this item at the request of SHPO or FPO.)

name Diocese of Florida

street & number 325 Market Street telephone 904-355-1934

city or town Jacksonville state FLORIDA zip code 32202

Paperwork Reduction Act Statement: This information is being collected for applications to the National Register of Historic Places to nominate properties for listing or determine eligibility for listing, to list properties, and amend listings. Response to this request is required to obtain a benefit in accordance with the National Historic Preservation Act, as amended (16 U.S.C. 470 et seq.).

Estimated Burden Statement: Public reporting burden for this form is estimated to average 18.1 hours per response including time for reviewing instructions, gathering and maintaining data, and completing and reviewing the form. Direct comments regarding this burden estimate or any aspect of this form to the Chief, Administrative Services Division, National Park Service, P.O. Box 37127, Washington, DC 20013-7127, and the Office of Management and Budget, Paperwork Reductions Projects (1024-0018), Washington, DC 20503.

United States Department of the Interior
National Park Service

National Register of Historic Places
Continuation Sheet

Section number 7 Page 1

ST. MARY'S EPISCOPAL CHURCH,
MADISON, MADISON CO., FL

SUMMARY

St. Mary's Episcopal Church is located at 108 North Horry Street in the city of Madison, Madison County, Florida. The main (west) facade of the Carpenter Gothic styled church, constructed in 1879-1881, fronts on Horry Street. The church has a brick pier foundation enclosed with metal sheeting, horizontal drop wooden siding, and a front gable roof with asphalt shingles. The nomination is being made under the Multiple Property cover, *Florida's Carpenter Gothic Episcopal Churches*.

SETTING

St. Mary's Episcopal Church is located in the northwest, quarter of a block, one block west of the Madison town square, and one block north of Base Street (State Road 90), the major east/west thoroughfare. The lot is grassed and has scrubs and two magnolia trees (Photo #1). The neighborhood is the historic town center, and is primarily large residences. Commercial properties are along Base street. The county court house, and three churches are within a three block radius.

PHYSICAL DESCRIPTION

Exterior

The historic church has a rectangular footprint for the nave, with a small chancel extension off the eastern end, and a small sacristy extension off the south of the chancel. A parish hall has been added which envelopes the sacristy, enlarging the southern extension. The main (west) facade has a gabled portico supported by two turned posts and carved brackets (Photo #2). The porch is accessed by three steps. The main double-doors, made with pine paneling, fit within a triangular pointed doorway (Photo #3). A circular window is above the porch, within the gable. Visible to the

United States Department of the Interior
National Park ServiceNational Register of Historic Places
Continuation SheetSection number 7 Page 2ST. MARY'S EPISCOPAL CHURCH,
MADISON, MADISON CO., FL

south is the west wall of the parish hall extension, with horizontal drop siding, a gabled portico with two square columns, and a row of five, 12-light, fixed window sashes (Photo #4). The north elevation has six, narrow, triangular arched lancet windows (Photo #5). Each window has horizontal wooden muntins, dividing the sash into four lights (Photo #6). Three vertical wooden braces are bolted to the wall on both the northern and southern exterior walls. Exposed beams under the eaves have shaped ends. The broad side of the gable roof is visible. The uninterrupted north wall of the chancel is visible to the west. Further to the west is visible the north wall of the parish hall addition with horizontal drop siding and two, 2/2, double-hung wooden sash windows. The east elevation has a lancet window within the chancel (Photo #7). Repaired siding beneath the window indicates that the original window was longer. The parish hall extension to the south has two levels of gable roof (Photo #8). The extension's east elevation contains a door and five 12-light wooden sash windows. The south elevation of the church has five triangular arched lancet windows (Photo #4). The south wall of the parish hall extension has a central door and two 1/1, double hung wooden sash windows in the eastern half. The gable of the slightly angled roof is visible.

Interior

A central aisle runs from the main door to the chancel (Photo #9,10). The pine wooden flooring is laid east to west. The horizontal, wood paneled walls have vertical wainscoting. Horizontal wooden braces are bolted to the walls in (Photo #11). The windows have plain trim and each sash pivots on its center, allowing them to open outwardly on the bottom. The windows contain 19th century textured, clear glass. The steeply pitched, wooden paneled ceiling has five sets of trusses within the nave. Each truss consists of a scissors-truss, cross beam, and wall brace (Photo #12). On the south wall, where a wood stove used to

United States Department of the Interior
National Park ServiceNational Register of Historic Places
Continuation SheetSection number 7 Page 3ST. MARY'S EPISCOPAL CHURCH,
MADISON, MADISON CO., FL

be, remain scroll sawn support brackets and a boxed enclosure, (Photo #13). The south wall has a door in the southeast corner. On the west wall is a circular window containing a figural, painted, stained glass window (Photo #14). Within the wall are two braces, running from floor to upper corners (Photo #15). Within the west and east walls, above the door and above the chancel, are two braces near the ceiling that repeat the scissors-truss arrangement. There are eighteen original pews with red cushions within the nave. The chancel has a steeply pitched ceiling, accented by three scissors-trusses. The floor of the chancel is slightly elevated and contains a wooden altar and original church furniture. A lancet window containing a figural, painted, stained glass window in within the eastern wall behind the altar.

The original sacristy is accessed from the door in the south wall of the chancel. The small room has the same kind of wooden floor, walls, and ceiling, as the main body of the church. A lancet shaped door with two iron strap hinges is in the sacristy's south wall (Photo #16). The assembly hall has added to the southern corner of the church in a manner that encompassed the sacristy without changing it. The assembly hall consists of an open space with a bathroom and kitchen in the southeast corner (Photo #17). The assembly hall can be accessed from a door in the southeast corner of the nave.

Alterations

In 1919, a memorial stained glass window was placed in the east chancel wall, over the altar. By the 1920s, if not earlier, the wall braces were added to correct bowing of the walls. In the late 1940s, a wooden, assembly hall addition including a toilet and kitchen, was connected to the southeast corner of the church. In 1950, a memorial stained glass window was placed in the west wall of the church. In 1985, the assembly hall was enlarged. A door into the nave, located beside the sacristy, was added which eliminated one

**United States Department of the Interior
National Park Service**

**National Register of Historic Places
Continuation Sheet**

Section number 7 Page 4

ST. MARY'S EPISCOPAL CHURCH,
MADISON, MADISON CO., FL

window. The hurricane of 1985 broke seven lights of textured clear glass in the lancet windows. Their lights were repaired with replicated glass.

**United States Department of the Interior
National Park Service**

**National Register of Historic Places
Continuation Sheet**

Section number 8 Page 1

**ST. MARY'S EPISCOPAL CHURCH,
MADISON, MADISON CO., FL**

SUMMARY

St. Mary's Episcopal Church is significant on the local level under Criterion C in the area of architecture under the Multiple Property Cover, Florida's Carpenter Gothic Episcopal Churches, under Historic Context I: Ecclesiological Movement in Florida, and Historic Context II: Episcopate of Bishop Young, 1867-1885, historic contexts, and the Associated Property Type F.1, Religious Facility. The church is a good example of the frame Neo-Gothic church style promoted by then Bishop, John Freeman Young.

CONTEXT AND SIGNIFICANCE

Madison County was incorporated in 1827, and the town of Madison was incorporated in 1838. The town, a 160 acre square, became the county seat. Madison was a commercial crossroad for a primarily agricultural region.

In 1859, an Episcopal congregation organized, but became dormant during the Civil War; services were held intermittently. The congregation reorganized in 1879. In the 1879 Journal for the Annual Council of the Florida Diocese of Florida it is recorded that it was "Resolved, that St. Mary's Church, Madison, be, and hereby is admitted into Union with the Diocese."

On July 6, 1879, the reorganized congregation appointed a committee to coordinate fund raising to build a church. On August 1st, the cornerstone for the church was laid by the Reverend W.H. Carter of St. John's Church in Tallahassee, and assisted by Reverend Meany of Holy Trinity Church in Gainesville, and the Masons of Madison Lodge. On May 1st, 1883, Bishop Young consecrated the completed church which with its land was valued at \$900.00. St. Mary's Church was debt free with \$85 available to paint the exterior, and \$55 for a bell (which was never bought).

**United States Department of the Interior
National Park Service**

**National Register of Historic Places
Continuation Sheet**

Section number 8 Page 2

**ST. MARY'S EPISCOPAL CHURCH,
MADISON, MADISON CO., FL**

St. Mary's Episcopal Church is a good example of the Carpenter Gothic style and form as advocated by the Ecclesiological Movement, and Florida's Bishop Young. The church was built by local craftsmen using local lumber, and reflects their building techniques. It is the oldest remaining church building in Madison. The church reflects the ecclesiological principles in its orientation to the east and an extended chancel containing the altar. The central aisle maintains the axial arrangement of interior space. The original sacristy remains intact, though enclosed by the assembly hall extension. The narrow nave, exposed truss system, steeply pitched roof, narrow triangular pointed windows, pointed main door, and style of furniture are design elements that well represent the Gothic style.

United States Department of the Interior
National Park Service

**National Register of Historic Places
Continuation Sheet**

Section number 9 Page 1

ST. MARY'S EPISCOPAL CHURCH,
MADISON, MADISON CO., FL

BIBLIOGRAPHY

Dickinson, Whittie, "Lest We Forget, Glossary, History of
Town and County," (n.p., n.d.).

Journal of the Annual Council of the Protestant Episcopal
Church in the Diocese of Florida, 1879, 1883.

Madison County, Deed Book "K."

Madison County Property Appraisers Office.

St. Mary's Episcopal Church, Parish Register.

**United States Department of the Interior
National Park Service**

**National Register of Historic Places
Continuation Sheet**

Section number 10 Page 1

ST. MARY'S EPISCOPAL CHURCH,
MADISON, MADISON CO., FL

VERBAL BOUNDARY DESCRIPTION

Block 17, Town of Madison Lots Nos. 115 and 118, Plat 3654.

BOUNDARY JUSTIFICATION

These boundaries encompass the property historically associated with St. Mary's Episcopal Church, and maintaining its historic integrity.

**United States Department of the Interior
National Park Service**

**National Register of Historic Places
Continuation Sheet**

Photographs
Section number _____ Page 1

**ST. MARY'S EPISCOPAL CHURCH,
MADISON, MADISON CO., FL**

PHOTOGRAPHIS LIST

1. St. Mary's Episcopal Church
108 N. Horry St.
2. Madison, Madison Co., FL
3. Donald K. Parry
4. 1994
5. Mr. Parry, Rt. 3, Box 810, Madison, FL 32340
6. West and north elevations, camera facing southeast.
7. Photo #1 of 17.

Items 1-5 are the same for the following photographs.

6. West elevation, facing west.
7. Photo #2 of 17.

6. Interior of main double doors, facing west.
7. Photo #3 of 17.

6. South elevation of nave and assembly hall on right,
facing northeast.
7. Photo #4 of 17.

6. North elevation, facing southwest.
7. Photo #5 of 17.

6. North elevation, windows and wall brace, facing south.
7. Photo #6 of 17.

6. West elevation showing chancel, facing west.
7. Photo #7 of 17.

6. West and south elevations of assembly hall, facing
northwest.
7. Photo #8 of 17.

**United States Department of the Interior
National Park Service**

**National Register of Historic Places
Continuation Sheet**

Section number Photographs Page 2

**ST. MARY'S EPISCOPAL CHURCH,
MADISON, MADISON CO., FL**

- 6. Interior showing chancel, facing east.
- 7. Photo #9 of 17.

- 6. Interior showing nave, facing west.
- 7. Photo #10 of 17.

- 6. Interior of nave wall showing windows and braces, facing southwest.
- 7. Photo #11 of 17.

- 6. Interior showing scissors trusses, facing west.
- 7. Photo #12 of 17.

- 6. Wall brackets that supported wood stove chimney, facing south.
- 7. Photo #13 of 17.

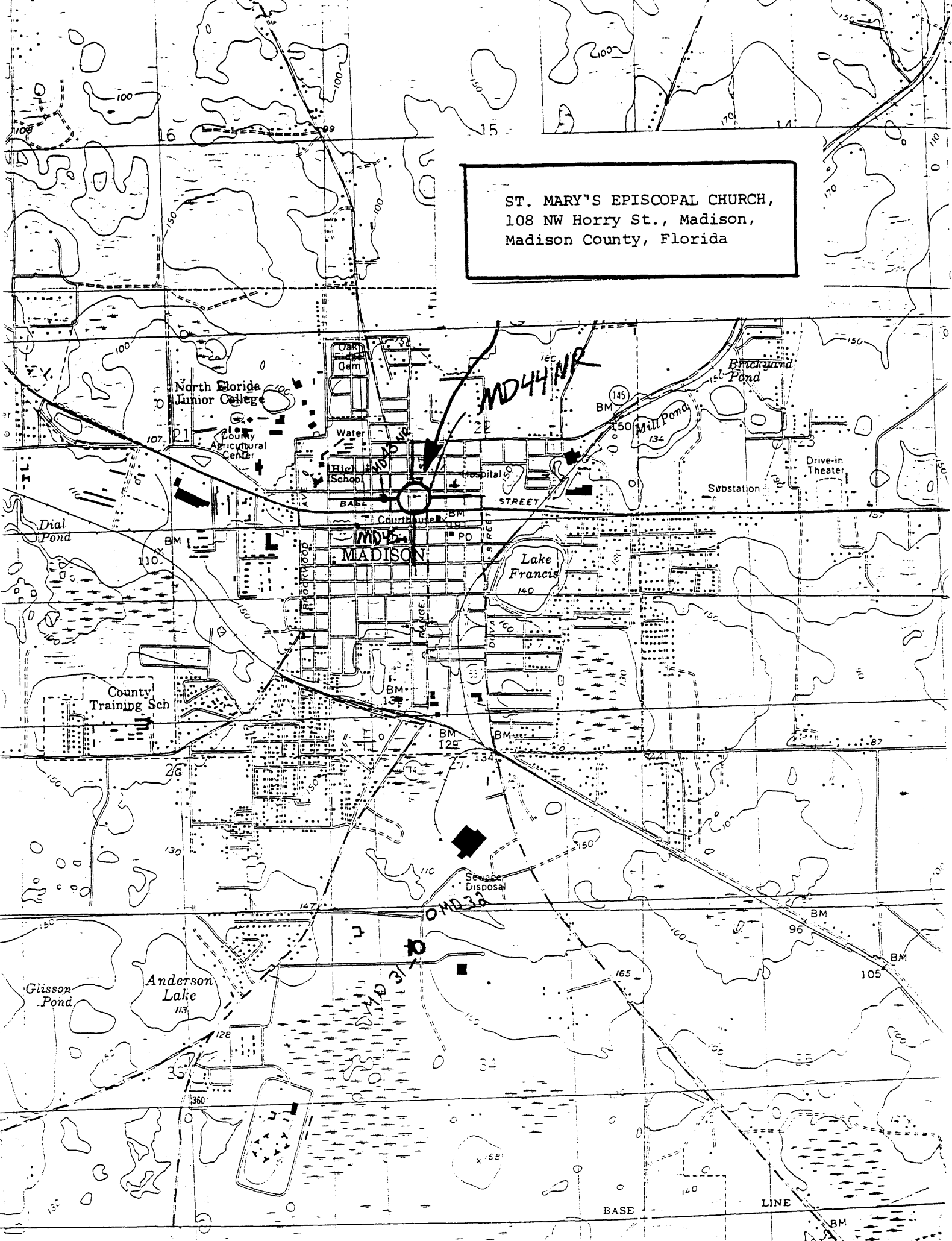
- 6. Stained glass window, and scissors wall braces, facing west.
- 7. Photo #14 of 17.

- 6. West interior wall with brace, facing southwest.
- 7. Photo #15 of 17.

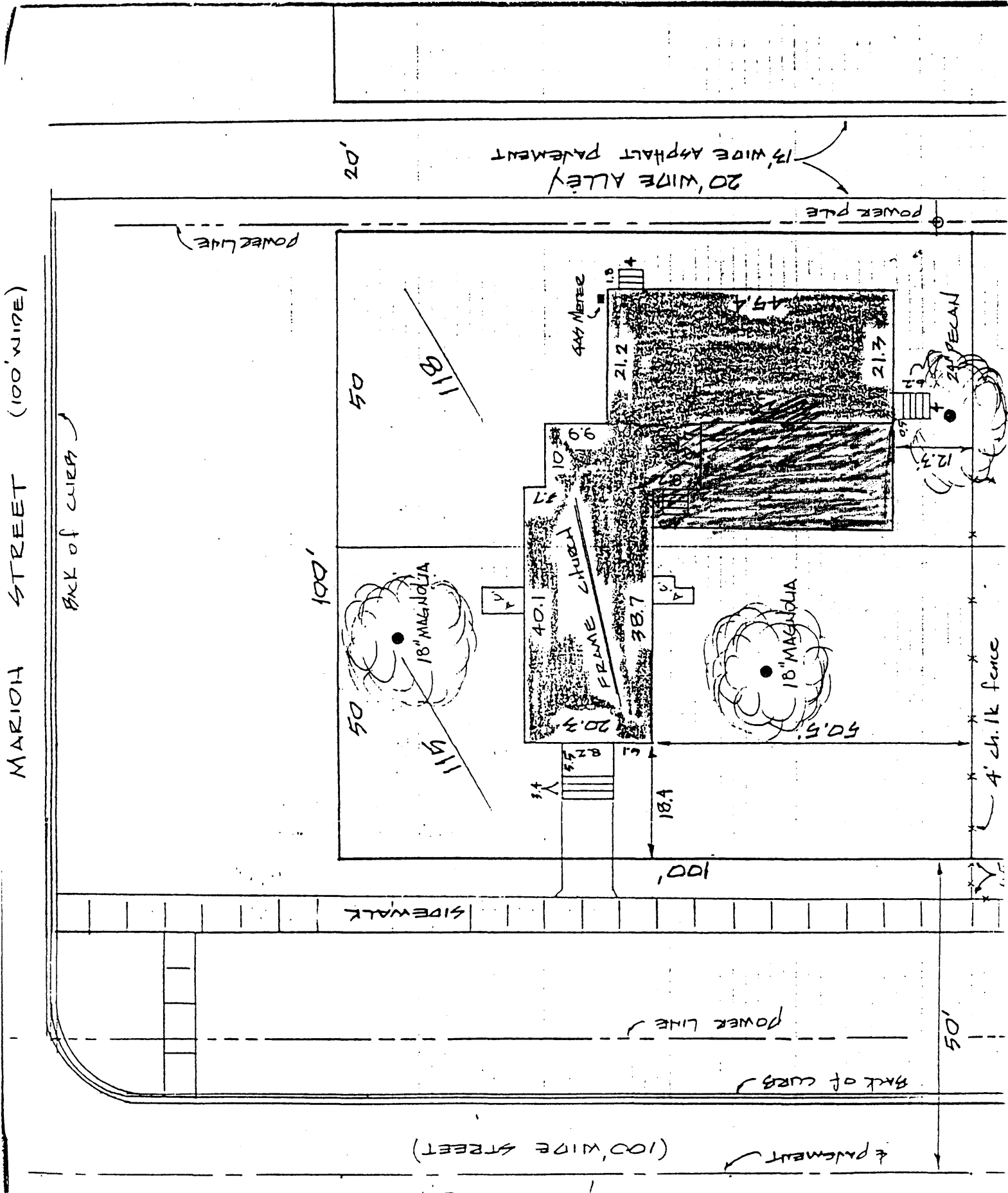
- 6. Pointed sacristy door with strap hinges, facing east.
- 7. Photo #16 of 17.

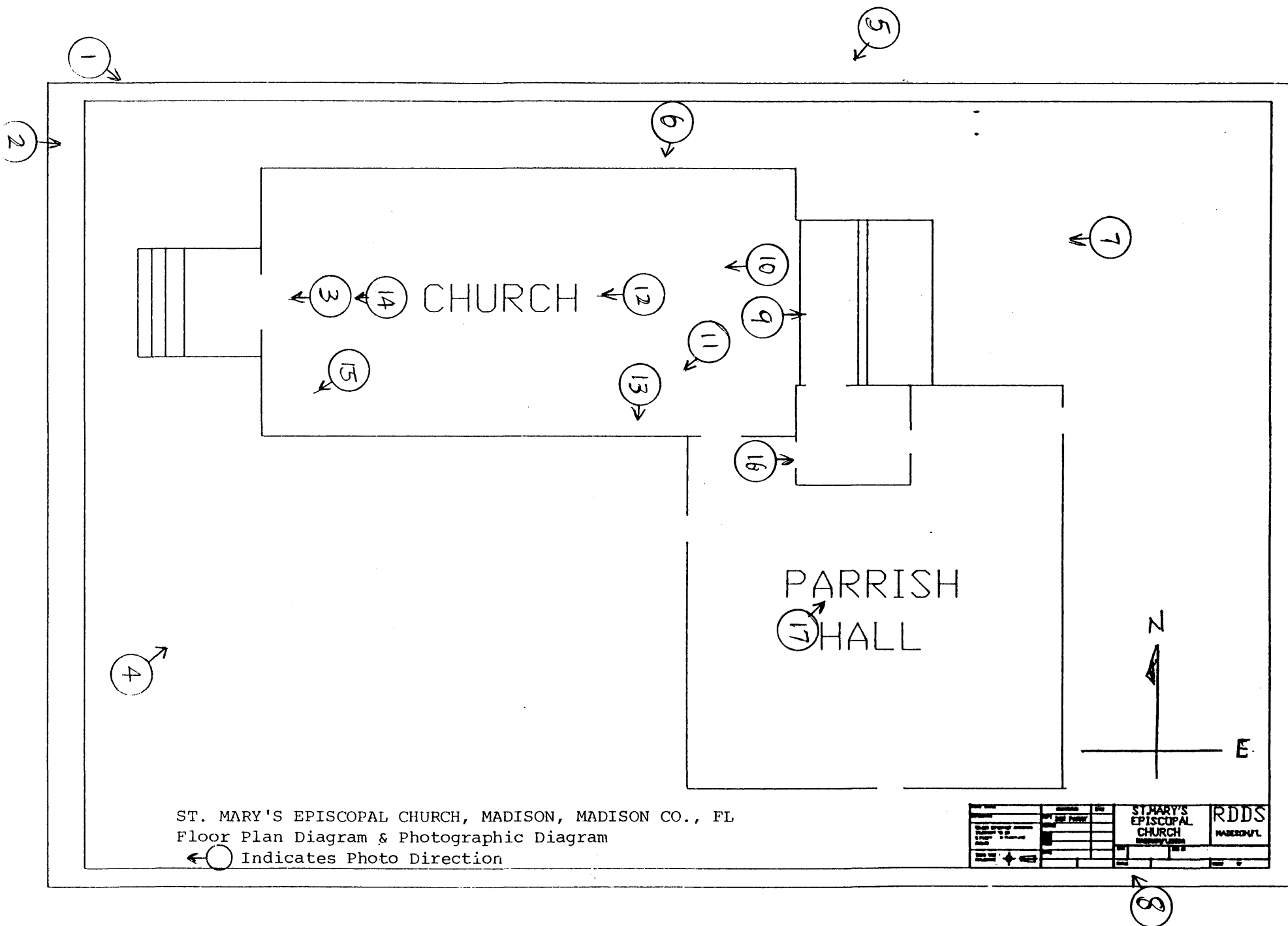
- 6. Interior of assembly hall, facing northwest.
- 7. Photo #17 of 17.

ST. MARY'S EPISCOPAL CHURCH,
108 NW Horry St., Madison,
Madison County, Florida



ST. MARY'S EPISCOPAL CHURCH, MADISON,
MADISON CO., FL - Site and Boundary Map

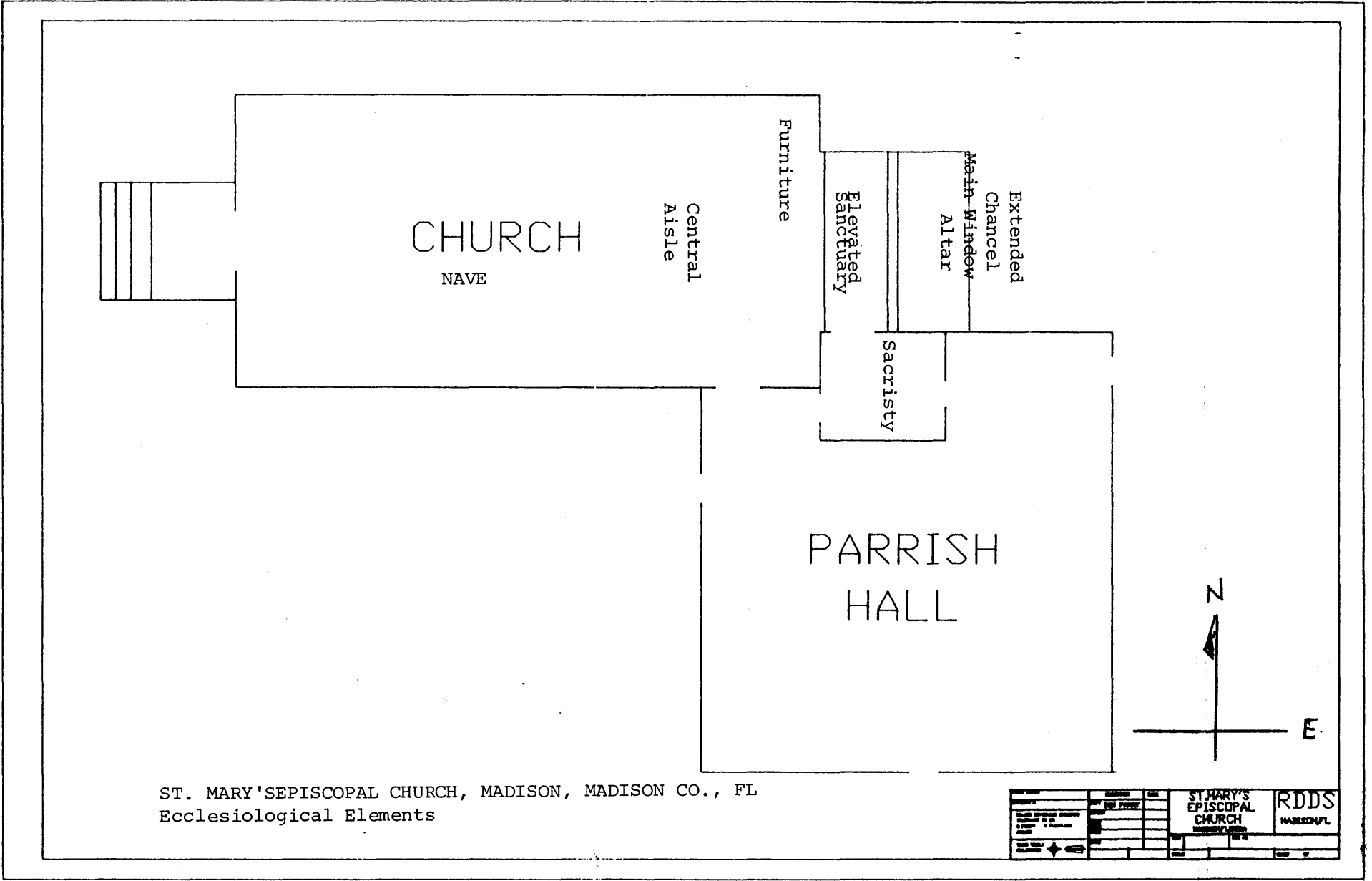




ST. MARY'S EPISCOPAL CHURCH, MADISON, MADISON CO., FL
 Floor Plan Diagram & Photographic Diagram

←○ Indicates Photo Direction

ST. MARY'S EPISCOPAL CHURCH MADISON, FL	RDDS MADISON, FL
--	---------------------



ST. MARY'S EPISCOPAL CHURCH, MADISON, MADISON CO., FL
 Ecclesiological Elements

ST. MARY'S EPISCOPAL CHURCH MADISON, FLORIDA	RDDS MADISON, FL
---	---------------------