



Howd-Linsley House
North Branford, Connecticut
Gregory Andrews, photographer
Negative on file with Connecticut
Historical Commission, Hartford
Front elevation, looking northeast
Photograph #1



Howd-Linsley House

North Branford, Connecticut

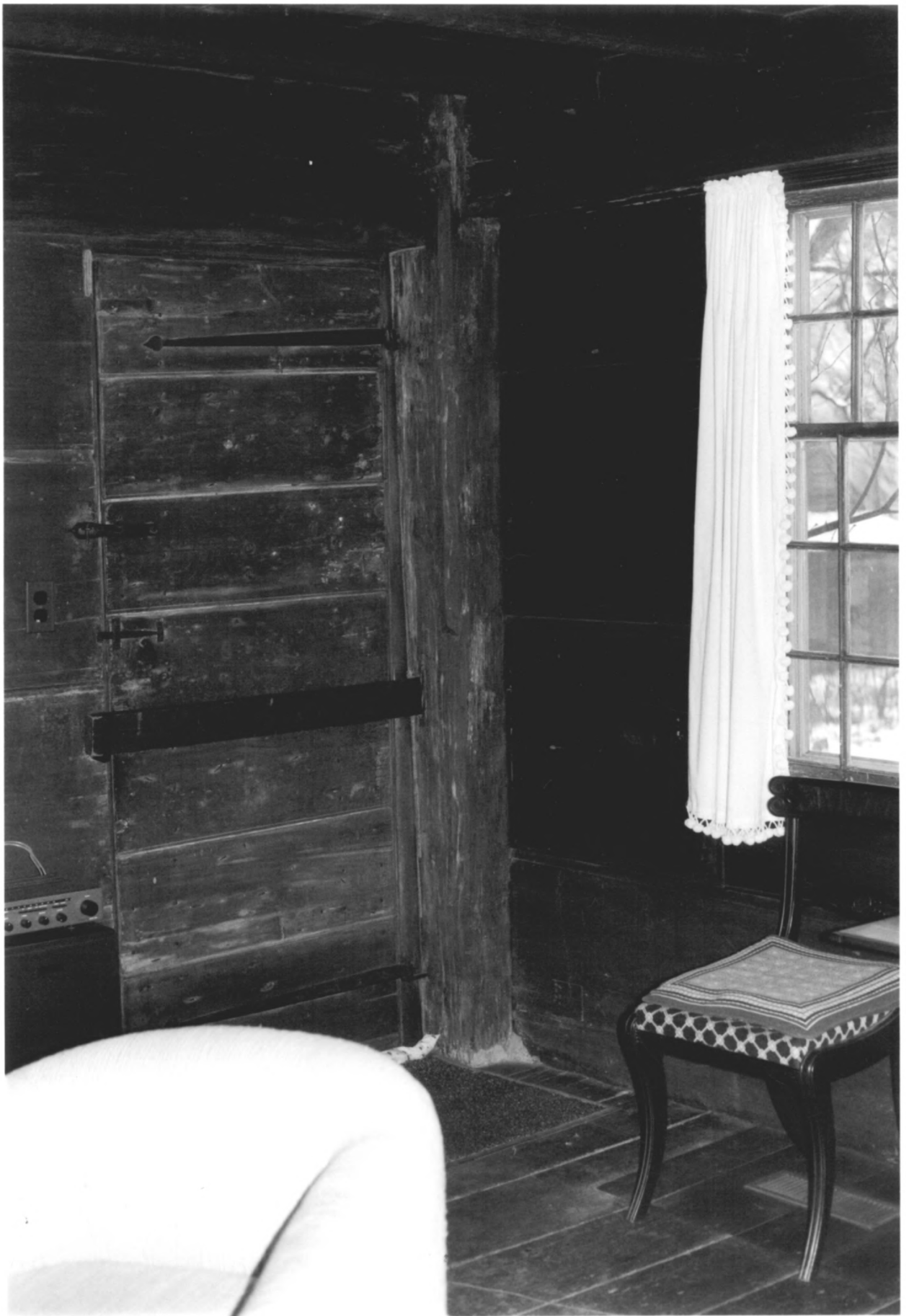
Gregory Andrews, photographer

Negative on file with Connecticut

Historical Commission, Hartford

Rear elevation, looking southwest

Photograph #2



Howd-Linsley House
North Branford, Connecticut
Gregory Andrews, photographer
Negative on file with Connecticut
Historical Commission, Hartford
Exterior door from Keeping Room
Photograph #3



Howd-Linsley House

North Branford, Connecticut

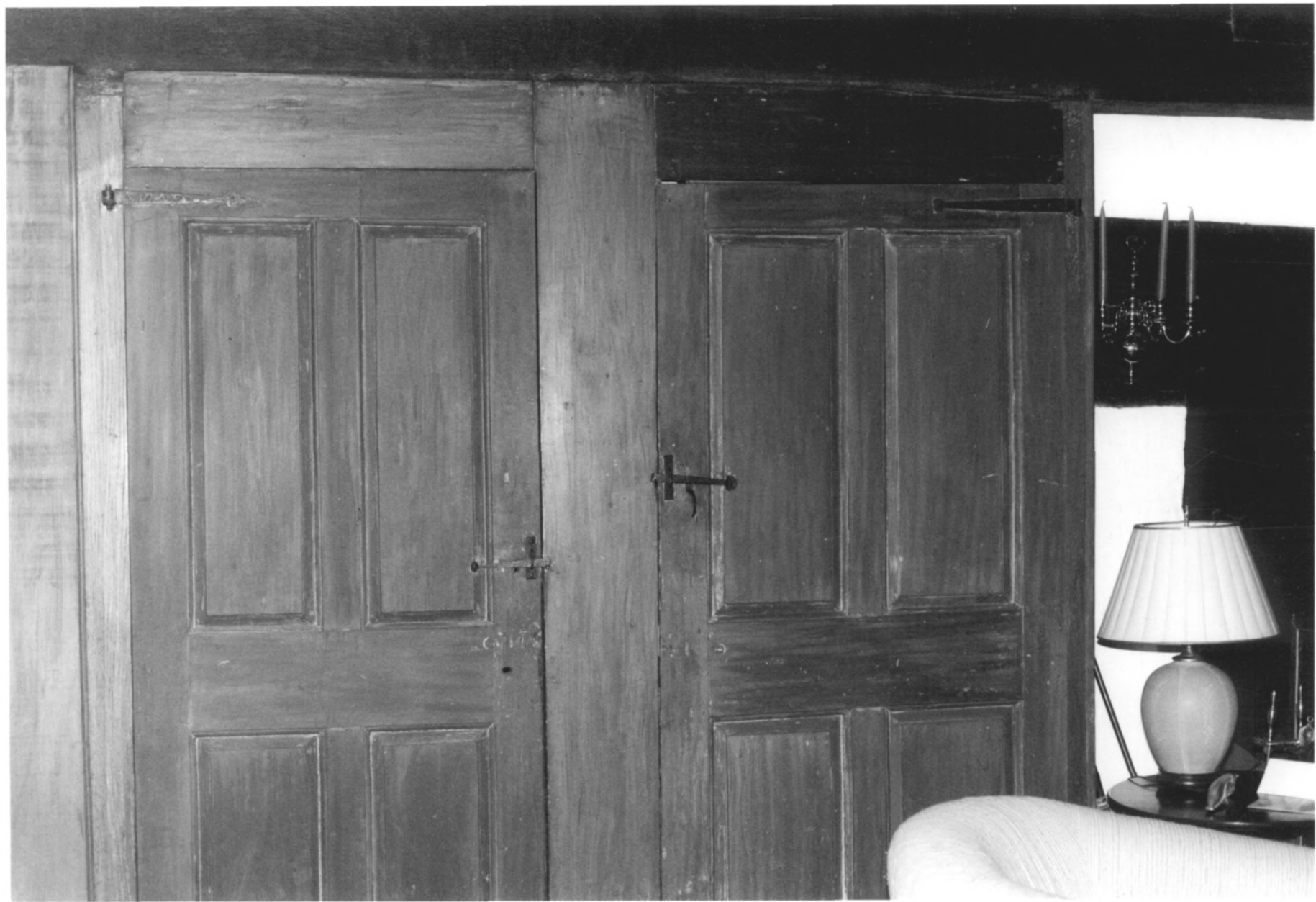
Gregory Andrews, photographer

Negative on file with Connecticut

Historical Commission, Hartford

Summer beam and floor joists in Parlor

Photograph #4



Howd-Linsley House

North Branford, Connecticut

Gregory Andrews, photographer

Negative on file with Connecticut

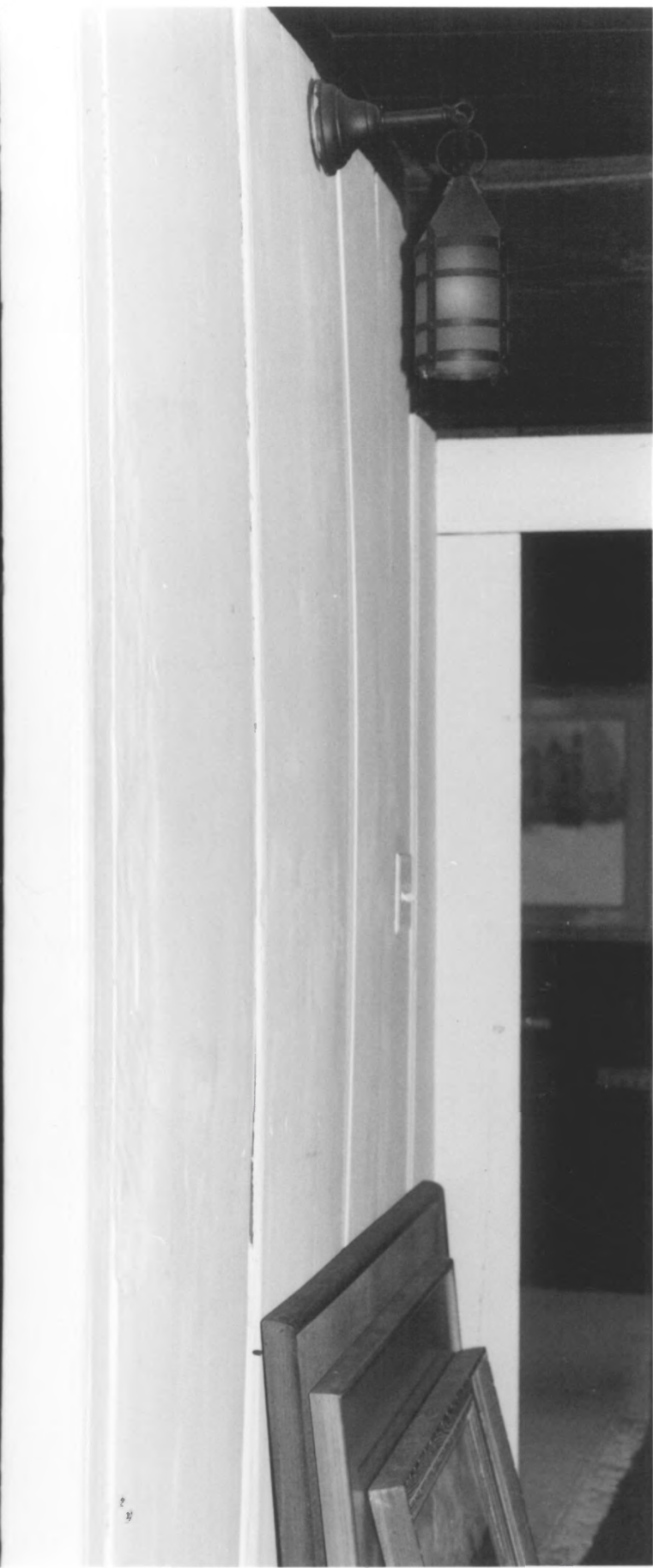
Historical Commission, Hartford

Interior doors in Keeping Room

Photograph #5



Howd-Linsley House
North Branford, Connecticut
Gregory Andrews, photographer
Negative on file with Connecticut
Historical Commission, Hartford
Fireplace in old kitchen
Photograph #6



Howd-Linsley House
North Branford, Connecticut
Gregory Andrews, photographer
Negative on file with Connecticut
Historical Commission, Hartford
Main staircase
Photograph #7



Howd-Linsley House
North Branford, Connecticut
Gregory Andrews, photographer
Negative on file with Connecticut
Historical Commission, Hartford
Hall, second floor
Photographer #8



Howd-Linsley House

North Branford, Connecticut

Gregory Andrews, photographer

Negative on file with Connecticut

Historical Commission, Hartford

Barn/garage, northeast view

Photo #9