



775

United States Department of the Interior  
National Park Service

# National Register of Historic Places Registration Form

This form is for use in nominating or requesting determinations for individual properties and districts. See instructions in National Register Bulletin, *How to Complete the National Register of Historic Places Registration Form*. If any item does not apply to the property being documented, enter "N/A" for "not applicable." For functions, architectural classification, materials, and areas of significance, enter only categories and subcategories from the instructions. Place additional certification comments, entries, and narrative items on continuation sheets if needed (NPS Form 10-900a).

### 1. Name of Property

historic name Glynn Academy

other names/site number Sterling Consolidated School

### 2. Location

street & number Southeast corner of Egmont and Monck streets

city or town Brunswick

state Georgia code GA county Glynn code 127 zip code 31520

<input type="checkbox"/>	not for publication
<input type="checkbox"/>	vicinity

### 3. State/Federal Agency Certification

As the designated authority under the National Historic Preservation Act, as amended,  
I hereby certify that this  nomination  request for determination of eligibility meets the documentation standards for registering properties in the National Register of Historic Places and meets the procedural and professional requirements set forth in 36 CFR Part 60.

In my opinion, the property  meets  does not meet the National Register Criteria. I recommend that this property be considered significant at the following level(s) of significance:

national  statewide  local

David C. Crass 9-16-11  
Signature of certifying official/Title: Dr. David C. Crass/Historic Preservation Division Director/Deputy SHPO Date

Historic Preservation Division, Georgia Dept. of Natural Resources  
State or Federal agency/bureau or Tribal Government

In my opinion, the property  meets  does not meet the National Register criteria.

Signature of commenting official \_\_\_\_\_ Date \_\_\_\_\_

Title \_\_\_\_\_ State or Federal agency/bureau or Tribal Government

### 4. National Park Service Certification

I hereby certify that this property is:

- entered in the National Register
- determined eligible for the National Register
- determined not eligible for the National Register
- removed from the National Register
- other (explain:)

[Signature]  
Signature of the Keeper

11/4/11  
Date of Action

Glynn Academy  
 Name of Property

Glynn County, Georgia  
 County and State

**5. Classification**

**Ownership of Property**  
 (Check as many boxes as apply.)

- private
- public - Local
- public - State
- public - Federal

**Category of Property**  
 (Check only one box.)

- building(s)
- district
- site
- structure
- object

**Number of Resources within Property**  
 (Do not include previously listed resources in the count.)

Contributing	Noncontributing	
1	0	buildings
0	0	sites
0	0	structures
0	0	objects
1	0	<b>Total</b>

**Name of related multiple property listing**  
 (Enter "N/A" if property is not part of a multiple property listing)

N/A

**Number of contributing resources previously listed in the National Register**

0

**6. Function or Use**

**Historic Functions**  
 (Enter categories from instructions.)

Education: school

**Current Functions**  
 (Enter categories from instructions.)

Work in progress

**7. Description**

**Architectural Classification**  
 (Enter categories from instructions.)

Mid-19<sup>th</sup>-Century Revival: Greek Revival

**Materials**  
 (Enter categories from instructions.)

foundation: Brick, Concrete

walls: Wood: weatherboard

roof: Asphalt

other: N/A

**Narrative Description**

(Describe the historic and current physical appearance of the property. Explain contributing and noncontributing resources if necessary. Begin with a **summary paragraph** that briefly describes the general characteristics of the property, such as its location, setting, size, and significant features.)

Glynn Academy  
Name of Property

Glynn County, Georgia  
County and State

## Summary Paragraph

The Glynn Academy is a two-story, frame school building located at the corner of Monck and Egmont streets on the campus of the Glynn Academy in the Newtown section of Brunswick, a coastal port city in Glynn County in southeast Georgia. Built in 1840 in the Greek Revival style, the academy building features a two-story porch supported by four Doric columns. The exterior is clad in weatherboard and the gabled roof is covered with asphalt shingles. Windows throughout are nine-over-nine-light sashes with plain surrounds. The main entrance features a pair of tall, two-panel doors. The interior plan features stairs in an entrance vestibule and large front and rear classrooms. The second story also comprises front and rear classrooms. The interior is finished with wood floors and wood sheathing on the walls and ceiling. The craftsmanship of the builder, Jonathan Bill, is evident throughout the building, especially in the hand-planed flutes on the Doric columns.

---

## Narrative Description

\*\*The following description derives from Brock Tobaben, "Glynn Academy" Historic Property Information Form, July 2009. On file at the Historic Preservation Division, Georgia Department of Natural Resources, Atlanta, Georgia.

The Glynn Academy is a two-story, frame, Greek Revival-style school building. Built in 1840, the academy is located on the sprawling campus of the Glynn Academy, a public school in the Newtown section of Brunswick in Glynn County, Georgia (photos 1-6). The rectangular-shaped building features a temple-front entrance with four Doric columns across the front (photos 1 and 7-8). The building is oriented east to west with its main porch entrance on the west end. The building measures 32 feet wide, 68 feet long, and 36 feet tall. The four fluted columns that support the front porch measure approximately 20-feet high and two-feet, four-inches in diameter.

The academy is clad in weatherboards and the foundation is reinforced concrete with brick piers. The gable roof is clad in asphalt shingles. The windows on the north and west walls are single double-hung sashes. The south and east walls feature larger, paired double-hung sashes, which illuminate the first- and second-floor classrooms (photo 4). These rooms are also lighted by transoms above the doors and along the corridor. The main entrance includes a pair of two-panel wood doors that are original to the building (photo 1).

The academy is platform framed with heavy hand-hewn timbers. The sills are 12-inch timbers and the floor joists measure six inches by eight inches. The wall studs include diagonal-braced studs in the corners (photo 16). The roof was mostly rebuilt in 1925 when the school was moved to Sterling, Georgia. The roof includes reused original timbers from 1840 and a modern truss system that was installed in 2008, after the building was moved to its current location. The new roof system includes threaded steel rods concealed in the wall framing, which tie the roof to the masonry foundation to resist hurricane winds. Steel beams were added to support the wide spans across the first-floor classrooms (photos 10-11 and 13-14).

The interior plan on the first floor features an entrance vestibule across the front and two full-width classrooms. The rear classroom is reached through the front classroom. Stairs in the entrance vestibule provide access to the second floor, which also includes two classrooms (photos 9 and 18-21). The second floor features corridors across the front and along the north side (photos 15 and 17). The side corridor provides access to both classrooms. The front corridor includes the stair.

The interior is finished with wood sheathing (photos 9-21). The floors, walls, and ceilings are tongue-and-groove wood boards. The widths of the boards vary from wall to wall, sometimes in the same room, and some boards are missing. The vestibule includes a vertical-board wainscoting. The nails throughout the building are both hand-forged and machined-made cut nails. In several classrooms, small, round flue openings high on walls are the only evidence that the academy was heated by stoves (photo 19). Blackboards were included in each classroom, though the blackboards in the first- and second-floor classrooms are missing (photos 19-21).

Glynn Academy  
Name of Property

Glynn County, Georgia  
County and State

The Glynn Academy building is located on the grounds of the Glynn Academy in downtown Brunswick. The academy campus includes a dozen mostly red brick buildings on two blocks bounded by Monck, Egmont, Albany, and George streets. The campus includes academic buildings from the late-19<sup>th</sup> century through the first half of the 20<sup>th</sup> century. Many, such as the Annex Building, Prep Building, and the Glynn Academy, which was built in 1923, were designed in architectural revival styles. The red-brick gymnasium was designed in the Art Deco style. Later buildings, such the Science Building (1963), were designed in the International Style. The Glynn Academy is the oldest building on the campus of Glynn Academy.

The original location of the Glynn Academy was at the northeast corner of Mansfield and Egmont streets with the main façade facing west on Egmont Street. In 1915, the Glynn Academy was moved 10 miles north to Jesup Road in Sterling, Georgia, where it was used as an African-American school, known as the Sterling Consolidated School. In 2008, the Board of Education of Glynn County moved the school building from Sterling to the Glynn Academy campus in Brunswick. The academy building is currently located within the same city block that it had occupied before its move in 1915 (figure 1). Although its street address is on Egmont Street, the school is located on the south side of Monck Street half a block west of Egmont. The school faces west onto a small parking lot that is also bounded by the Beth Tefilloh synagogue and the T-shaped brick school administration building, also known as the Glynn Academy Building, which was built in 1923.

The plan of streets has changed dramatically since the 1915 when the Glynn Academy was located at Egmont and Mansfield streets. Norwich Street south of Monck was made into parking lot and Hillsborough Square, to the south, was eliminated. In addition, land between Egmont and Albany streets was consolidated for the expanding academy campus. Carpenter and Wolf streets were eliminated Mansfield and George streets to allow for campus buildings and green space.

## 8. Statement of Significance

### Applicable National Register Criteria

(Mark "x" in one or more boxes for the criteria qualifying the property for National Register listing.)

- A Property is associated with events that have made a significant contribution to the broad patterns of our history.
- B Property is associated with the lives of persons significant in our past.
- C Property embodies the distinctive characteristics of a type, period, or method of construction or represents the work of a master, or possesses high artistic values, or represents a significant and distinguishable entity whose components lack individual distinction.
- D Property has yielded, or is likely to yield, information important in prehistory or history.

- |                          |  |
|--------------------------|--|
| <input type="checkbox"/> | C a birthplace or grave.   |
| <input type="checkbox"/> | D a cemetery.  |
| <input type="checkbox"/> | E a reconstructed building, object, or structure.                            |
| <input type="checkbox"/> | F a commemorative property.  |
| <input type="checkbox"/> | G less than 50 years old or achieving significance within the past 50 years. |

### Criteria Considerations

(Mark "x" in all the boxes that apply.)

Property is:

- A Owned by a religious institution or used for religious purposes.
- B removed from its original location.

Glynn Academy  
Name of Property

Glynn County, Georgia  
County and State

**Areas of Significance**

(Enter categories from instructions.)

Architecture

\_\_\_\_\_  
\_\_\_\_\_

**Significant Person**

(Complete only if Criterion B is marked above.)

N/A

**Cultural Affiliation**

N/A

**Period of Significance**

1840

\_\_\_\_\_

**Architect/Builder**

Bill, Jonathan (builder)

**Significant Dates**

1840—Glynn Academy constructed.

\_\_\_\_\_  
\_\_\_\_\_

**Period of Significance (justification)**

The period of significance begins and ends in 1840, when the Glynn Academy was constructed. The period of significance includes only one year because the Glynn Academy was moved from its original location.

**Criteria Considerations (explanation, if necessary)**

The Glynn Academy was moved in 1915 from its original location in Brunswick to the community of Sterling. It was moved a second time in 2008 when it was relocated to the campus of the Glynn Academy in Brunswick. The Glynn Academy campus site is compatible with the academy building's historic site, less than 100 yards away, which it occupied from 1840 to 1915. The Glynn Academy meets Criterion Consideration B because its significance is based on its significance as an excellent example of Greek Revival-style architecture, not on historical associations connected to its previous locations.

**Statement of Significance Summary Paragraph (Provide a summary paragraph that includes level of significance and applicable criteria.)**

The Glynn Academy was commissioned by the Brunswick board of commissioners in 1840. Jonathan Bill, a Connecticut builder, constructed the Greek Revival-style school on Hillsborough Square in the Newtown area of Brunswick. The Glynn Academy is significant as an excellent example of the Greek Revival style. Its temple-front entrance and colossal Doric columns reflect the Doric temples of ancient Greece. The Doric temple was the principal building form of the Greek Revival style, which became popular in the United States from 1820 to 1860 largely because of its associations with the democratic traditions of ancient Greece. The Glynn Academy building is significant at the local level under National Register Criterion C because it is an excellent example of the Greek Revival style in Brunswick.

Glynn Academy

Name of Property

Glynn County, Georgia

County and State

**Narrative Statement of Significance** (Provide at least one paragraph for each area of significance.)

The Glynn Academy building was commissioned by the Brunswick board of commissioners in 1840 and for almost half a century the Glynn Academy building was the only public school in Brunswick. The Greek Revival-style academy, constructed by Jonathan Bill, a Connecticut builder, was built on Hillsborough Square in the Newtown area of Brunswick.

The Glynn Academy is significant in the area of architecture as an excellent example of the Greek Revival style, which was popular in Georgia from roughly 1820 through the 1860s. The most prominent feature of the academy is the two-story tetra-style (four columns) portico, which was modeled after Doric temples of the ancient Greeks. The columns stand without bases and bulge slightly above the midpoint, an optical correction used by the Greeks called *entasis* that allows the vertical lines of columns to appear straight rather than concave. The choice of a Doric temple front and its associations with the Golden Age of Greek culture reflect the high regard for education held by Glynn County residents. The interior with large classrooms on the first and second floors conveys its significance as a 19<sup>th</sup>-and 20<sup>th</sup>-century public school.

The important contribution of the Glynn Academy building to the education of white children in Brunswick from 1840 to 1888 and African-American children in Sterling from 1915 through the late 1960s is documented in this National Register nomination, but education is not included as an area of significance because the building was moved from the places where it was historically used as a school.

---

**Developmental history/additional historic context information** (if appropriate)

\*\*The following developmental history derives from Brock Tobaben, "Glynn Academy" Historic Property Information Form, July 2009. On file at the Historic Preservation Division, Georgia Department of Natural Resources, Atlanta, Georgia.

The first constitution of the State of Georgia, adopted in 1777, provided for a system of public schools. Each county was to have its own academy in which children were to be taught from grade school through college preparatory courses. The plan was put into operation within a few years after the adoption of the constitution. Approximately 20 county academies were established, including Chatham Academy (now called Savannah High School), Richmond Academy, and Glynn Academy.

Georgia's early schools were supported by rents derived from lands adjoining the town commons. The state Constitution specified that lots within the county seat were to be sold. Lots that surrounded the town commons were to be rented with all income applied to the support of local academies.

Brunswick in the 18<sup>th</sup> century was surrounded on three sides by commons, which generated ample revenue for local schools. In 1788, the Georgia General Assembly passed an act naming eight men as the town's commissioners: Henry Osborne, George Handley, Christopher Hillary, John Braddock, William Stephens, John Houston, James Seagrove, and General Lachlan McIntosh. Under this act, the commissioners surveyed and sold town lots to raise funds to build the Glynn Academy.

The location of this first Brunswick school is unknown. In 1819, a second school was built at the corner of Ellis and L streets. Located in the center of a five-acre tract known as Academy Range, the school cost \$10,000 and was in use for more than 20 years. Neither of these early schools are extant.

The State of Georgia did not compel counties to support public schools until the middle of the 19<sup>th</sup> century. Glynn Academy operated under the provisions of the Constitution of 1777 and provided free education to children in Glynn County. The town commons supplied revenue for Brunswick schools until 1911. In 1838, Mayor A. L. King conveyed Hillsborough Square to the Trustees of Glynn County Academy.<sup>1</sup> Two years later, 300 acres of town commons in the Newtown area were sold with proceeds from the sale applied to the costs of constructing a new school building. The

---

<sup>1</sup> Patricia Barefoot, *Brunswick: The City by the Sea* (Arcadia, 2000), 108.

Glynn Academy

Name of Property

Glynn County, Georgia

County and State

building was constructed in 1840 by Jonathan Bills of Connecticut.<sup>2</sup> The academy was owned and administered by the Trustees of Glynn Academy. Located on Egmont Street on Hillsborough Square, the Glynn Academy served for half a century as the only public school in Brunswick.

By 1893, according to Sanborn Fire Insurance maps, two, two-story additions were added to the north and south sides of the academy. The additions were removed by 1908.

In 1888, the Glynn Academy was superseded by a new brick classroom building on Mansfield Street. The grounds of the new brick school occupied the entire block bounded by Carpenter, Wolfe, Monk, and Mansfield streets. By 1908, Norwich Street was laid through Hillsborough Square so close to the Glynn Academy that the rear of the frame building extended into Norwich Street. The Glynn Academy, which was no longer the primary education building, was used for school-related activities, city court, and for worship by several Brunswick church congregations. In 1911, the Board of Education of Glynn County assumed ownership of the academy and by 1913, the building was vacant.

In 1915, the Glynn Academy was moved 10 miles north to Jesup Road in Sterling where it was used as an African-American school, known as the Sterling Consolidated School.<sup>3</sup> In the late 1960s, when Glynn County desegregated its public schools, the academy building was no longer used as a school. It served as a community center for senior citizens, a community recreation center, a healthcare facility, and county offices and storage until it was vacated in the late 1990s.

In 2008, the Board of Education of Glynn County moved the school building south to the Glynn Academy campus in Brunswick, 100 hundred yards from its original location. The Glynn Academy is located on Egmont Street and serves as an educational facility for the Glynn Academy/Glynn County School Board.<sup>4</sup>

## 9. Major Bibliographical References

**Bibliography** (Cite the books, articles, and other sources used in preparing this form.)

Tobaben, Brock. "Glynn Academy." Historic Property Information Form, July 2009. On file at the Historic Preservation Division, Georgia Department of Natural Resources, Atlanta, Georgia.

### Previous documentation on file (NPS):

- preliminary determination of individual listing (36 CFR 67 has been requested)  
 previously listed in the National Register  
 previously determined eligible by the National Register  
 designated a National Historic Landmark  
 recorded by Historic American Buildings Survey # \_\_\_\_\_  
 recorded by Historic American Engineering Record # \_\_\_\_\_  
 recorded by Historic American Landscape Survey # \_\_\_\_\_

### Primary location of additional data:

- State Historic Preservation Office  
 Other State agency  
 Federal agency  
 Local government  
 University  
 Other

Name of repository: \_\_\_\_\_

Historic Resources Survey Number (if assigned): N/A

## 10. Geographical Data

<sup>2</sup> Ibid.

<sup>3</sup> Margaret Davis Cate, *Our Todays and Yesterdays: A Story of Brunswick and the Coastal Islands* (Brunswick, GA.: Glover Bros., 1930), 164.

<sup>4</sup> "Old Glynn Academy Building," Glynn County, Georgia website. Accessed Jan. 6, 2008 at <http://www.glynncounty.com/cgi-bin/oaktree.pl?dbf=data.txt&ID=00012713>

Glynn Academy  
Name of Property

Glynn County, Georgia  
County and State

**Acreage of Property** Less than one acre  
(Do not include previously listed resource acreage.)

**UTM References**  
(Place additional UTM references on a continuation sheet.)

A	<u>17</u>	<u>453290</u>	<u>3445990</u>	3	<u>                    </u>	<u>                    </u>	<u>                    </u>
	Zone	Easting	Northing		Zone	Easting	Northing
B	<u>                    </u>	<u>                    </u>	<u>                    </u>	4	<u>                    </u>	<u>                    </u>	<u>                    </u>
	Zone	Easting	Northing		Zone	Easting	Northing

**Verbal Boundary Description** (Describe the boundaries of the property.)  
The historic district boundary is indicated by a heavy black line on the attached map, which is drawn to scale.

**Boundary Justification** (Explain why the boundaries were selected.)  
The boundary encloses a small parcel that includes only the Glynn Academy building.

**11. Form Prepared By**

name/title Steven Moffson, Architectural Historian  
organization Historic Preservation Division, GA Dept. of Natural Resources date July 20, 2011  
street & number 254 Washington Street, Ground Level telephone (404) 656-2840  
city or town Atlanta state GA zip code 30334  
e-mail steven.moffson@dnr.state.ga.us

name/title Brock Tobaben  
organization John A. Tobaben and Associates date                       
street & number 4680 Highway 17 North telephone (912) 265-8686  
city or town Brunswick state GA zip code 31525  
e-mail N/A

**Additional Documentation**

Submit the following items with the completed form:

- **Maps:** A USGS map (7.5 or 15 minute series) indicating the property's location.

A **Sketch map** for historic districts and properties having large acreage or numerous resources. Key all photographs to this map.



Glynn Academy  
Name of Property

Glynn County, Georgia  
County and State

- **Continuation Sheets**
- **Additional items:** (Check with the SHPO or FPO for any additional items.)

---

**Photographs:**

Submit clear and descriptive photographs. The size of each image must be 1600x1200 pixels at 300 ppi (pixels per inch) or larger. Key all photographs to the sketch map.

Name of Property: Glynn Academy

City or Vicinity: Brunswick

County: Glynn State: Georgia

Photographer: Charlie Miller, Historic Preservation Division, Georgia Dept. of Natural Resources

Date Photographed: June 2010

Description and Number of Photographs: 21.

1. Front elevation, photographer facing northeast.
2. Main façade and south side, photographer facing north.
3. Main façade and south side, photographer facing north.
4. Rear façade and south side, photographer facing northwest.
5. Rear façade and south side, photographer facing northwest.
6. Rear façade, photographer facing southwest.
7. Front porch, photographer facing southeast.
8. Detail of front porch column, photographer facing northwest.
9. Interior, second floor, detail of wall framing and nails, photographer facing northwest.
10. Interior, first floor, front room, photographer facing northeast.
11. Interior, first floor, front room, photographer facing southwest.
12. Interior, first floor, front room, detail of wall repair, photographer facing southwest.
13. Interior, first floor, back room, photographer facing east.
14. Interior, first floor, back room, photographer facing northeast.
15. Interior, second floor, front corridor and stairs, photographer facing southeast.

Glynn Academy

Name of Property

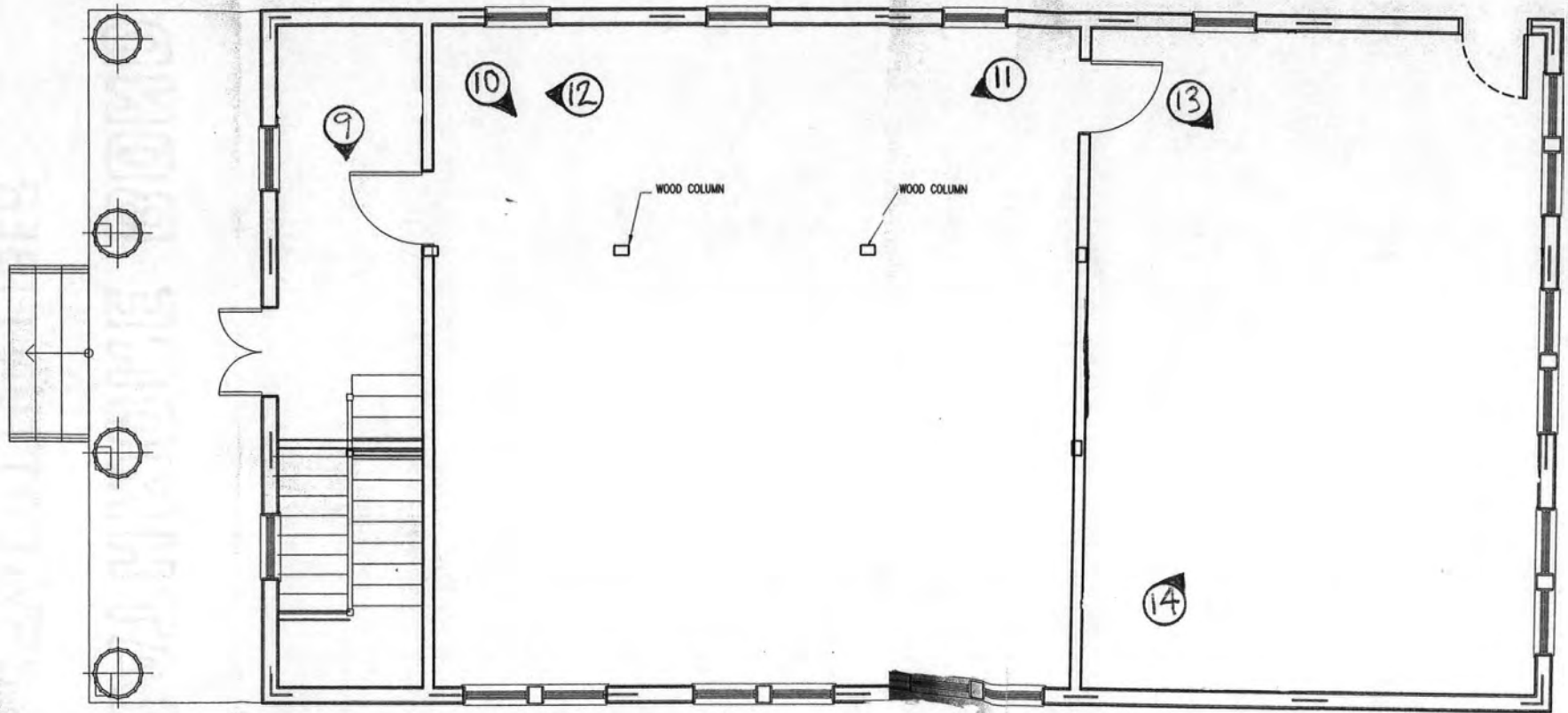
Glynn County, Georgia

County and State

16. Interior, second floor, front corridor, wall framing, photographer facing northeast.
17. Interior, second floor, side corridor, photographer facing northeast.
18. Interior, second floor, front room, photographer facing southeast.
19. Interior, second floor, front room, photographer facing northeast.
20. Interior, second floor, back room, photographer facing southeast.
21. Interior, second floor, back room, photographer facing south.

**Paperwork Reduction Act Statement:** This information is being collected for applications to the National Register of Historic Places to nominate properties for listing or determine eligibility for listing, to list properties, and to amend existing listings. Response to this request is required to obtain a benefit in accordance with the National Historic Preservation Act, as amended (16 U.S.C.460 et seq.).


**Estimated Burden Statement:** Public reporting burden for this form is estimated to average 18 hours per response including time for reviewing instructions, gathering and maintaining data, and completing and reviewing the form. Direct comments regarding this burden estimate or any aspect of this form to the Office of Planning and Performance Management, U.S. Dept. of the Interior, 1849 C. Street, NW, Washington, DC.

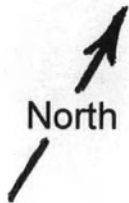


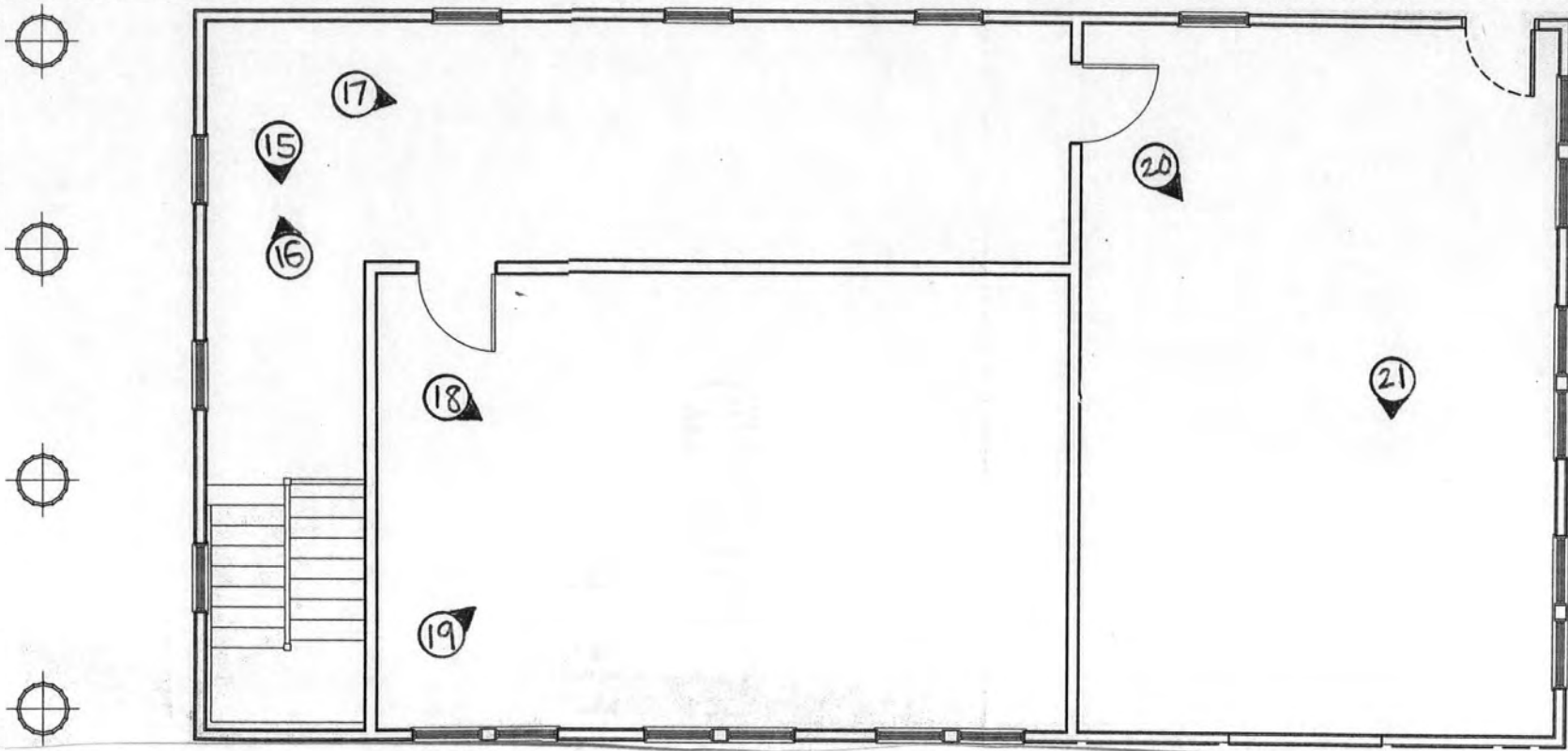
**Glynn Academy**

Brunswick, Glynn County, Georgia

First-Floor Plan

Photo number/direction of view 





**Glynn Academy**

Brunswick, Glynn County, Georgia

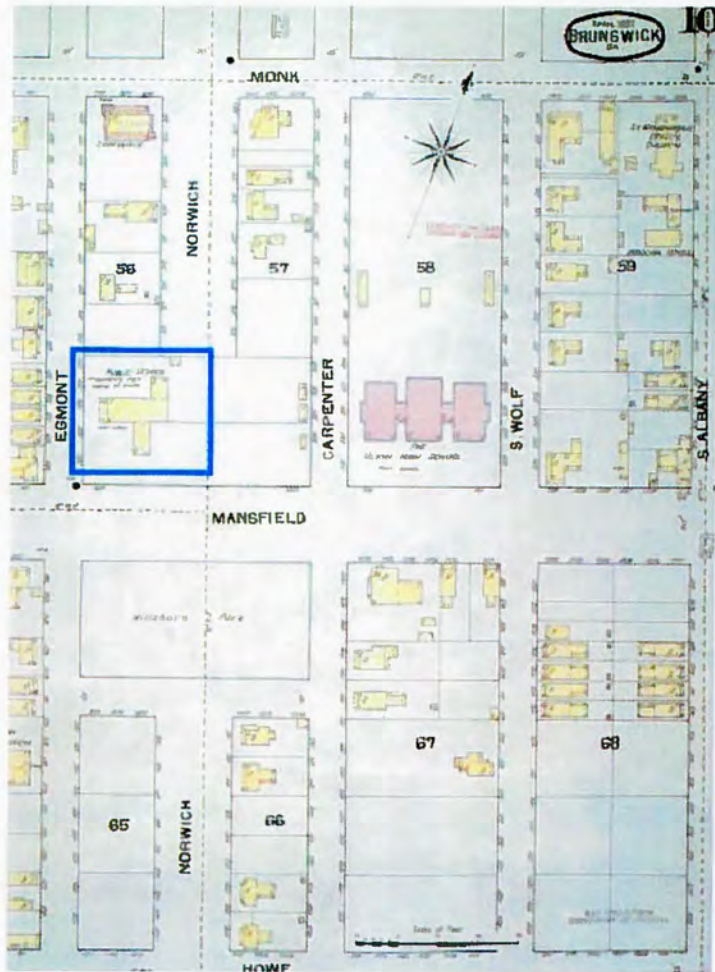
Second-Floor Plan

Photo number/direction of view



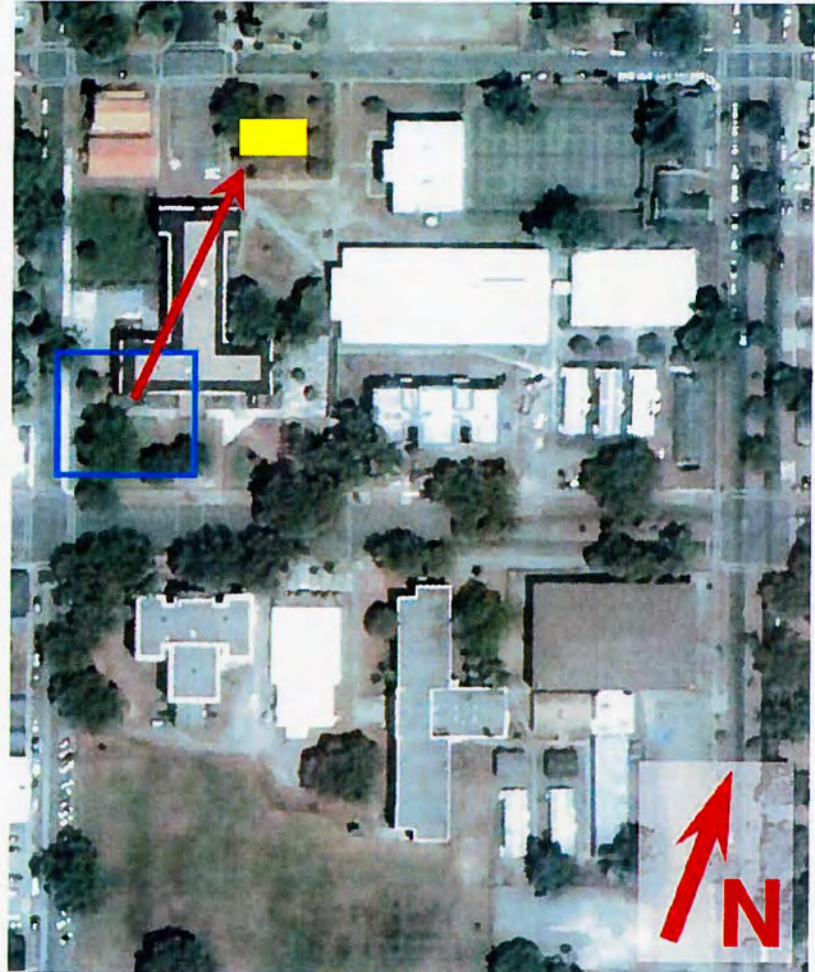
No scale





**Sanborn Fire Insurance Map  
Brunswick, GA 1893**

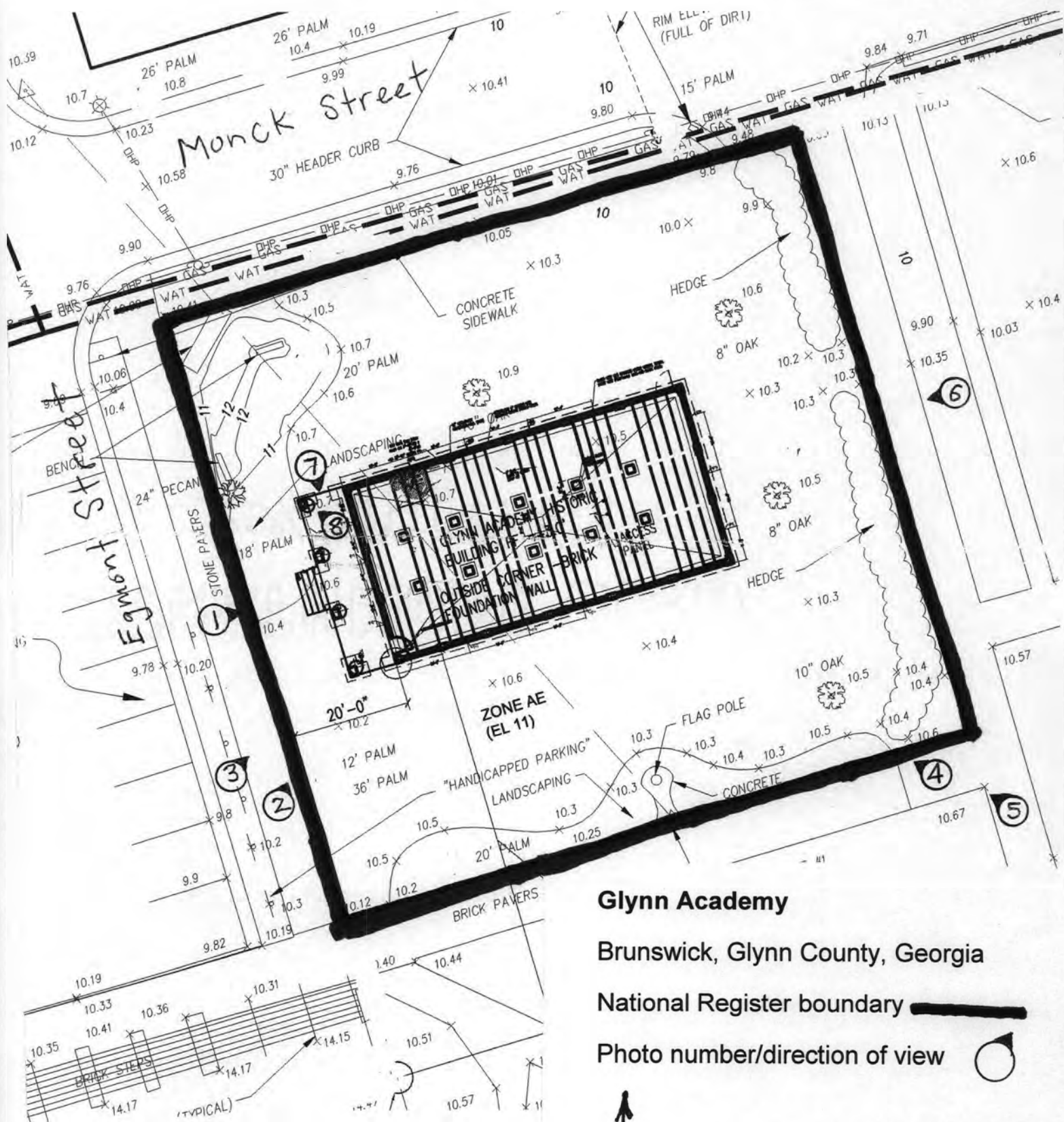
**Glynn Academy Building  
original location  
1840-1915**



**Google Earth image  
Brunswick, GA 2009**

**Historic Glynn Academy Building  
new location  
2008-current**

Figure 1

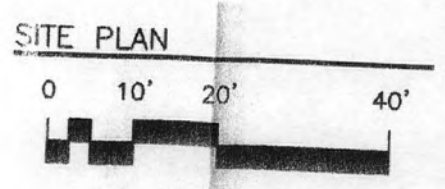
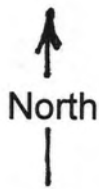


**Glynn Academy**

Brunswick, Glynn County, Georgia

National Register boundary

Photo number/direction of view



UNITED STATES DEPARTMENT OF THE INTERIOR  
NATIONAL PARK SERVICE

NATIONAL REGISTER OF HISTORIC PLACES  
EVALUATION/RETURN SHEET

REQUESTED ACTION: NOMINATION

PROPERTY NAME: Glynn Academy

MULTIPLE NAME:

STATE & COUNTY: GEORGIA, Glynn

DATE RECEIVED: 9/23/11 DATE OF PENDING LIST: 10/17/11  
DATE OF 16TH DAY: 11/01/11 DATE OF 45TH DAY: 11/08/11  
DATE OF WEEKLY LIST:

REFERENCE NUMBER: 11000775

REASONS FOR REVIEW:

APPEAL: N DATA PROBLEM: N LANDSCAPE: N LESS THAN 50 YEARS: N  
OTHER: N PDIL: N PERIOD: N PROGRAM UNAPPROVED: N  
REQUEST: Y SAMPLE: N SLR DRAFT: Y NATIONAL: N

COMMENT WAIVER: N

ACCEPT  RETURN  REJECT 11/4/11 DATE

ABSTRACT/SUMMARY COMMENTS:

*1840 Greek Revival School  
Georgian Architecture.*

RECOM./CRITERIA C

REVIEWER Usadani

DISCIPLINE Historic

TELEPHONE \_\_\_\_\_

DATE 11/4/11

DOCUMENTATION see attached comments Y/N see attached SLR Y/N

If a nomination is returned to the nominating authority, the nomination is no longer under consideration by the NPS.



**Glynn Academy**  
**Glynn County, Georgia**  
**Photograph 1 of 21**





**Glynn Academy**  
**Glynn County, Georgia**  
**Photograph 2 of 21**



**Glynn Academy**  
**Glynn County, Georgia**  
**Photograph 3 of 21**



**Glynn Academy**  
**Glynn County, Georgia**  
**Photograph 4 of 21**



**Glynn Academy**  
**Glynn County, Georgia**  
**Photograph 5 of 21**



**Glynn Academy**  
**Glynn County, Georgia**  
**Photograph 5 of 21**



**Glynn Academy**  
**Glynn County, Georgia**  
**Photograph 6 of 21**



**Glynn Academy**  
**Glynn County, Georgia**  
**Photograph 7 of 21**

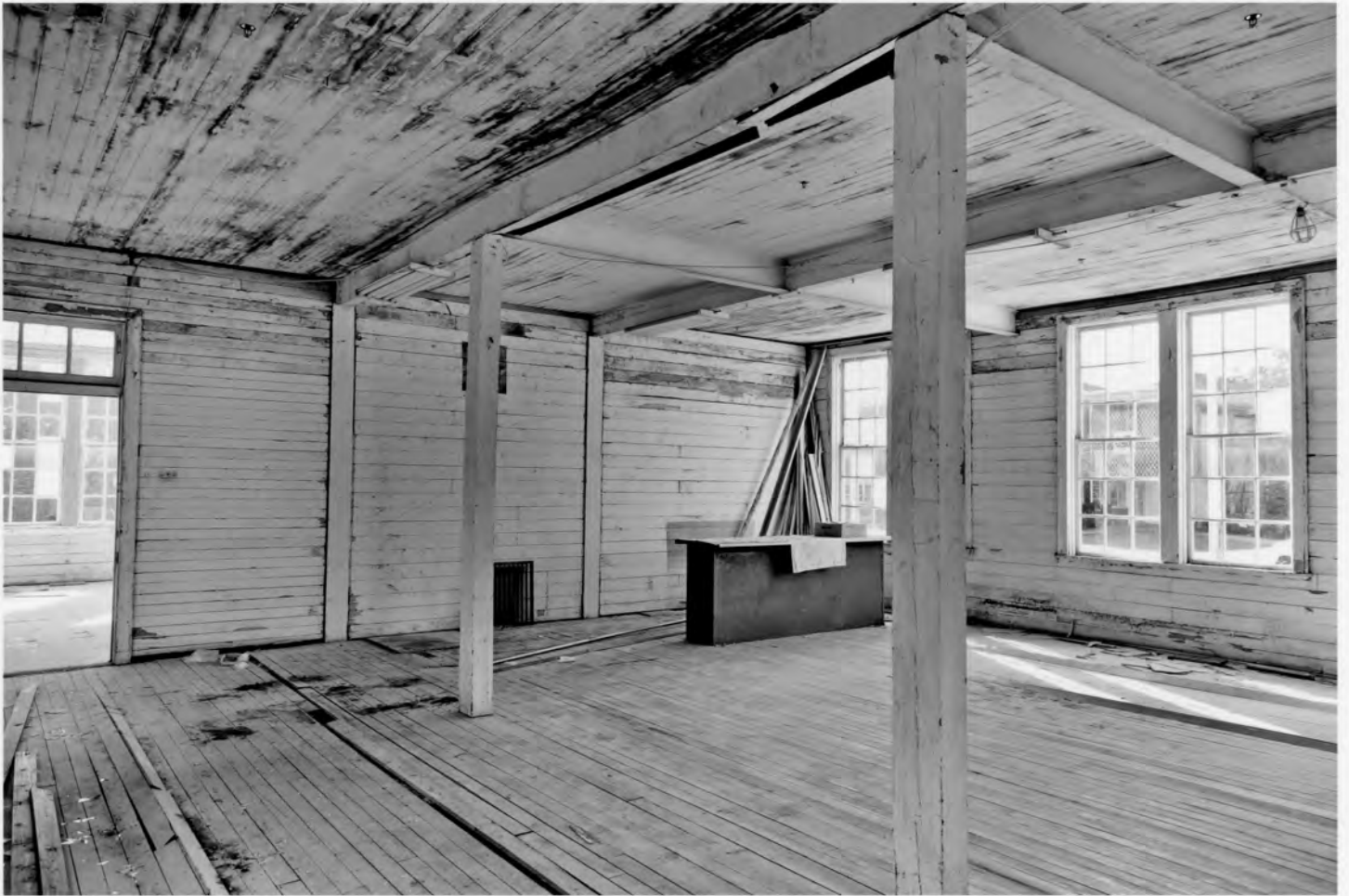


**Glynn Academy**  
**Glynn County, Georgia**  
**Photograph 8 of 21**





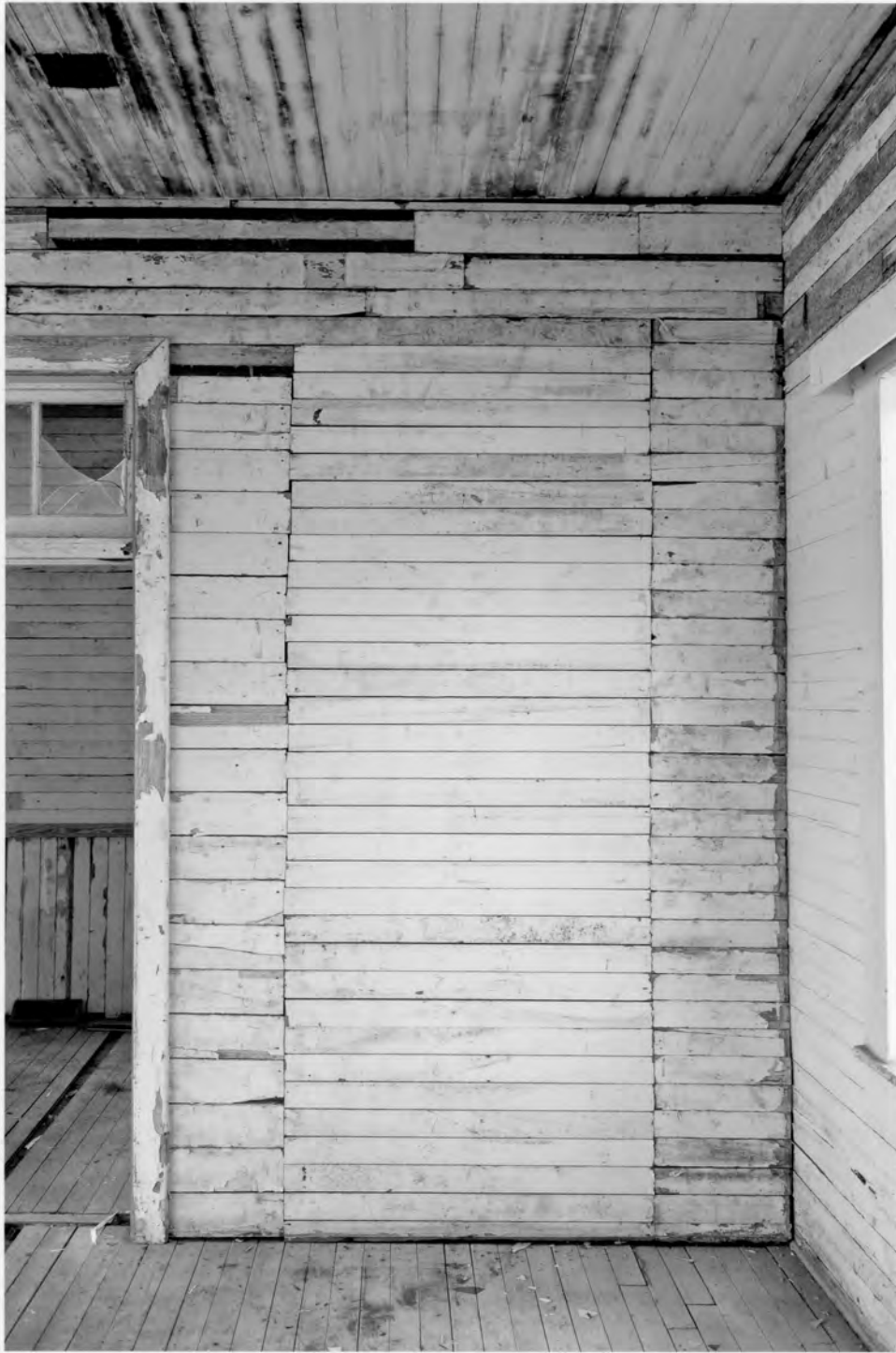
**Glynn Academy**  
**Glynn County, Georgia**  
**Photograph 9 of 21**



**Glynn Academy**  
**Glynn County, Georgia**  
**Photograph 10 of 21**



**Glynn Academy**  
**Glynn County, Georgia**  
**Photograph 11 of 21**



**Glynn Academy**  
**Glynn County, Georgia**  
**Photograph 12 of 21**



**Glynn Academy**  
**Glynn County, Georgia**  
**Photograph 13 of 21**



**Glynn Academy**  
**Glynn County, Georgia**  
**Photograph 14 of 21**



**Glynn Academy**  
**Glynn County, Georgia**  
**Photograph 15 of 21**



**Glynn Academy**  
**Glynn County, Georgia**  
**Photograph 16 of 21**

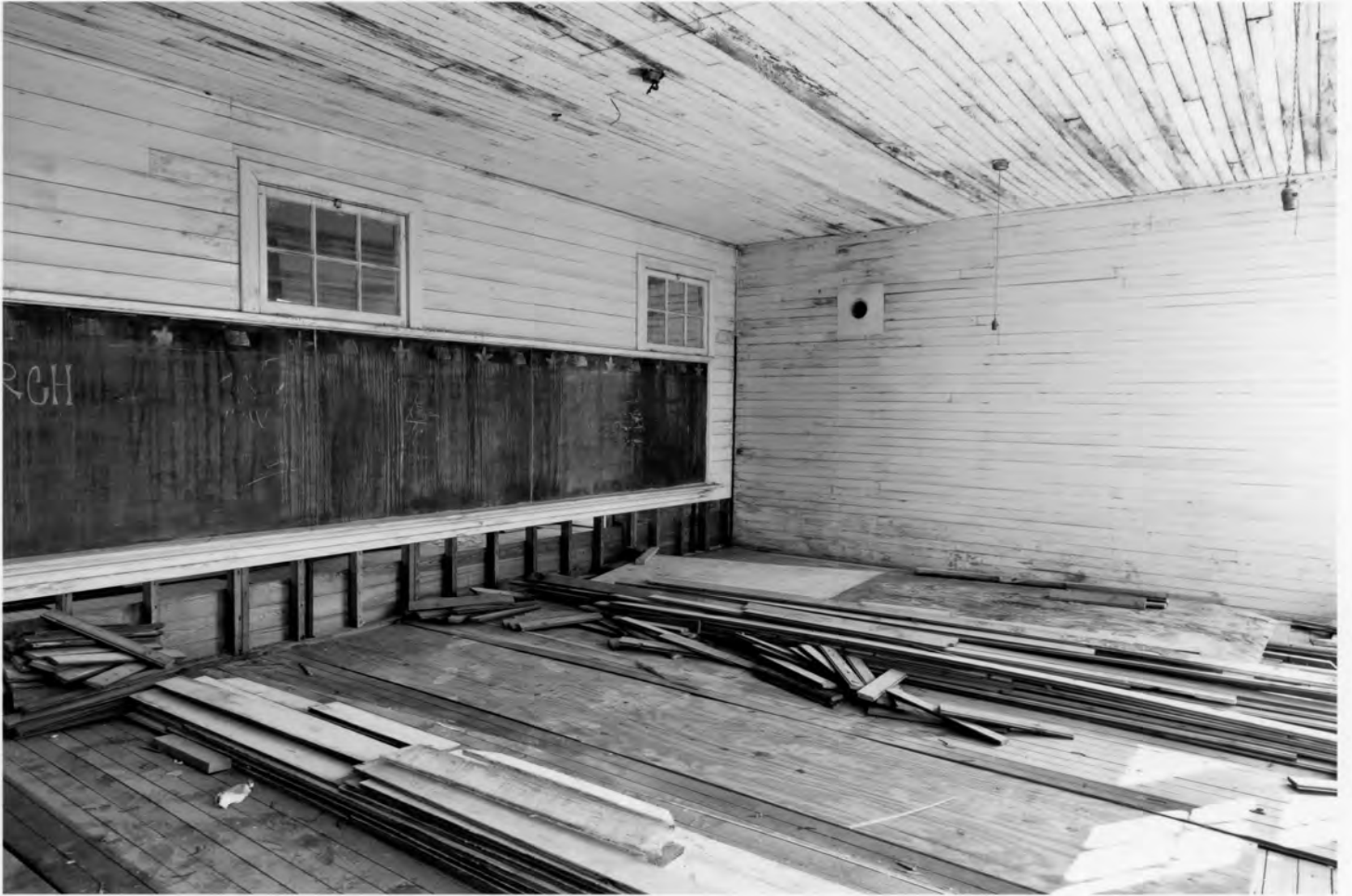




**Glynn Academy**  
**Glynn County, Georgia**  
**Photograph 17 of 21**



Glynn Academy  
Glynn County, Georgia  
Photograph 18 of 21



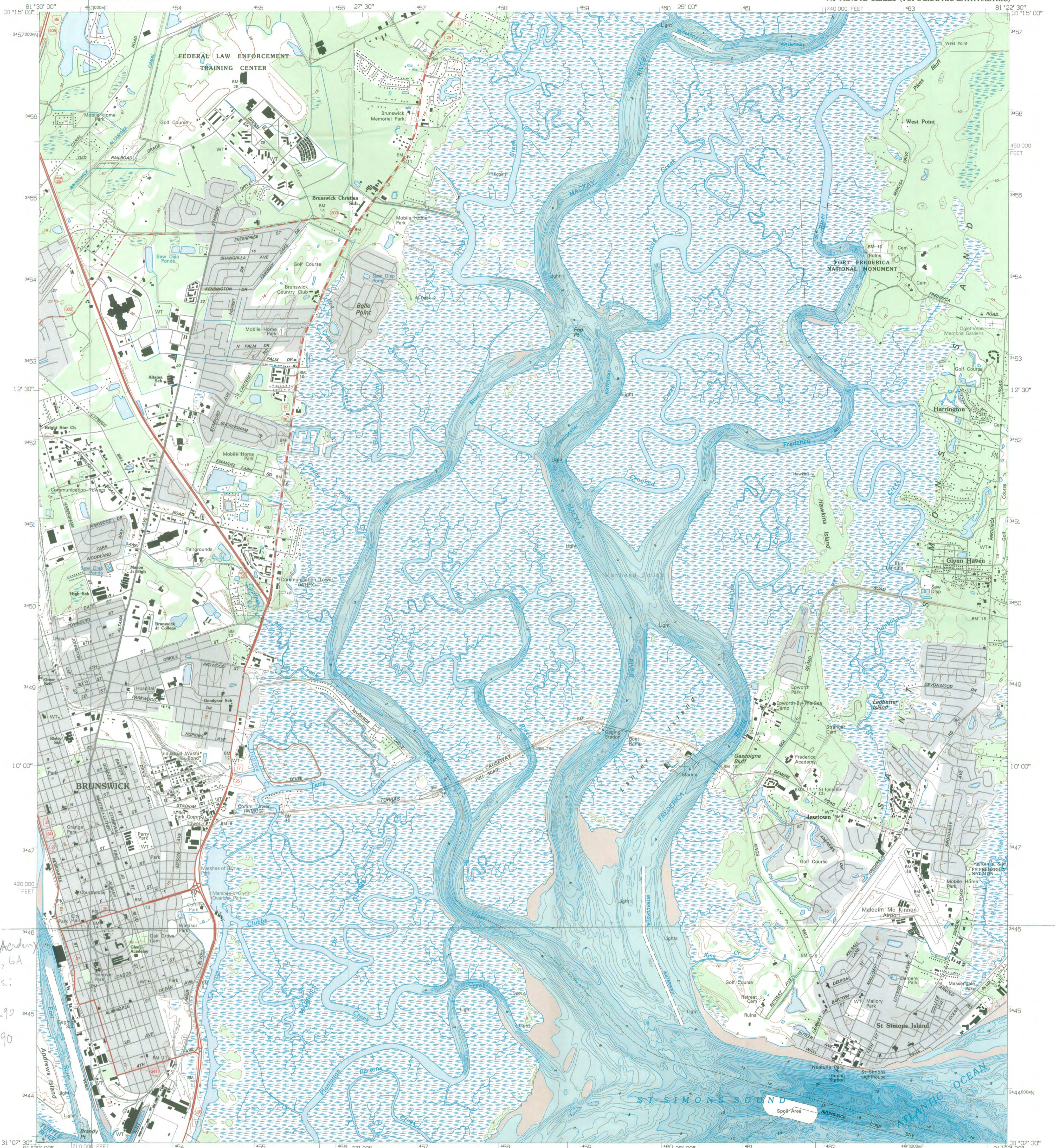
**Glynn Academy**  
**Glynn County, Georgia**  
**Photograph 19 of 21**



**Glynn Academy**  
**Glynn County, Georgia**  
**Photograph 20 of 21**

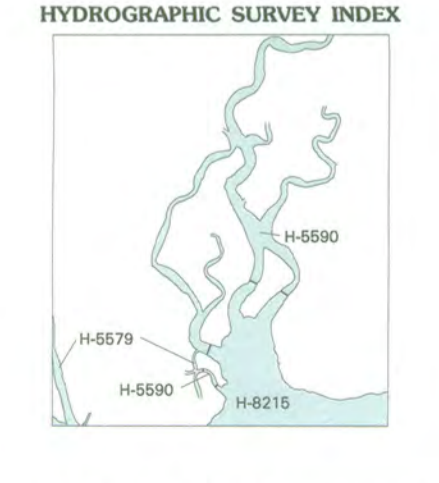


Glynn Academy  
Glynn County, Georgia  
Photograph 21 of 21



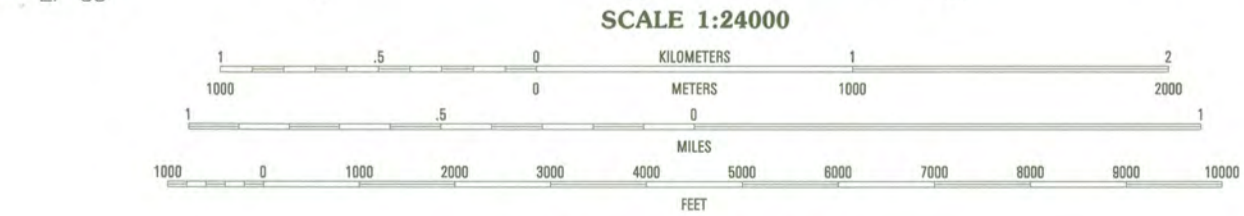
Glynn Academy  
Glynn Co., GA  
UTM Refs.:  
A17/45329D  
3445990

Produced by the United States Geological Survey in cooperation with State of Georgia agencies. Planimetry by photogrammetric methods from imagery dated 1974, Topography by planimetric surveys 1952 and 1954. Revised from imagery dated 1993 and other sources. Field checked 1993. Map edited 1995. Bathymetry compiled by the National Ocean Service from tide-coordinated hydrographic surveys. This information is not intended for navigational purposes. Mean lower low water (dotted) line and mean high water (heavy solid) line compiled by NOS from tide-coordinated imagery. Apparent shoreline (outer edge of vegetation) shown by light solid line. North American Datum of 1927 (NAD 27). Projection and blue 1000-meter ticks: Universal Transverse Mercator, zone 17 10 000-foot ticks: Georgia coordinate system, east zone. North American Datum of 1983 (NAD 83) is shown by dashed corner ticks. The values of the shift between NAD 27 and NAD 83 for 7.5-minute intersections are obtainable from National Geodetic Survey NADCON software. There may be private inholdings within the boundaries of the National or State reservations shown on this map.



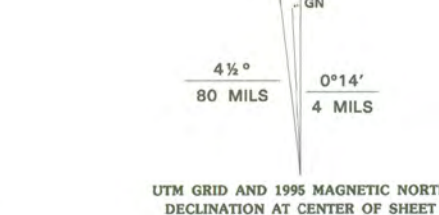
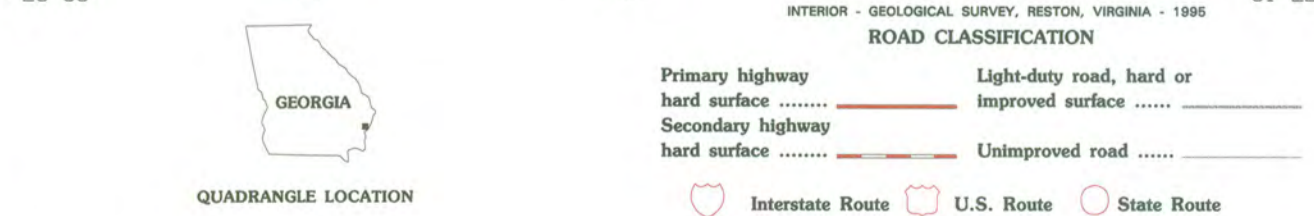
**HYDROGRAPHIC SURVEY INFORMATION**

Survey Number	Survey Date	Survey Scale	Survey Line Spacing (Naut. Miles)
H-5579	1934	1:10000	02-08
H-5590	1934	1:10000	01-06
H-6215	1954	1:10000	03-10



CONTOUR INTERVAL 5 FEET  
NATIONAL GEODETIC VERTICAL DATUM OF 1929  
BATHYMETRIC CONTOUR INTERVAL 1 METER WITH SUPPLEMENTARY 0.5 METER CONTOURS-DATUM IS MEAN LOWER LOW WATER  
THE RELATIONSHIP BETWEEN THE TWO DATUMS IS VARIABLE

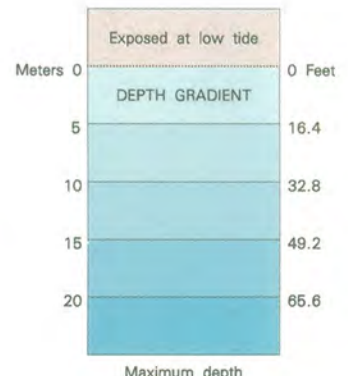
BASE MAP COMPLES WITH NATIONAL MAP ACCURACY STANDARDS  
BATHYMETRIC SURVEY DATA COMPLES WITH INTERNATIONAL HYDROGRAPHIC ORGANIZATION (IHO) SPECIAL PUBLICATION 44 ACCURACY STANDARDS AND/OR STANDARDS USED AS OF THE DATE OF THE SURVEYS  
FOR SALE BY U.S. GEOLOGICAL SURVEY  
DENVER, COLORADO 80225 OR RESTON, VIRGINIA 22092  
AND NATIONAL OCEAN SERVICE, ROCKVILLE, MARYLAND 20852  
A FOLDER DESCRIBING TOPOGRAPHIC MAPS AND SYMBOLS IS AVAILABLE ON REQUEST



ADJOINING 7.5' QUADRANGLE NAMES

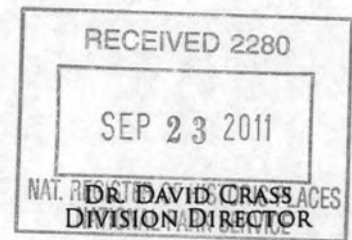
1	2	3	1 Sterling
2	3	4	2 Darien
3	4	5	3 Altamaha Sound
4	5	6	4 Brunswick West
5	6	7	5 Sea Island
6	7	8	6 Dover Bluff
7	8		7 Jekyll Island

**BRUNSWICK EAST, GA**  
31081-B4-TB-024  
1993  
DMA 4746 III NW-SERIES Y845



 **GEORGIA**  
DEPARTMENT OF NATURAL RESOURCES  
**HISTORIC PRESERVATION DIVISION**

MARK WILLIAMS  
COMMISSIONER



September 19, 2011


J. Paul Loether  
National Park Service  
National Register of Historic Places  
1201 "I" (Eye) Street, N.W. 8th floor  
Washington, D.C. 20005

Dear Mr. Loether:

Please find enclosed the following nominations to the National Register of Historic Places for your consideration:

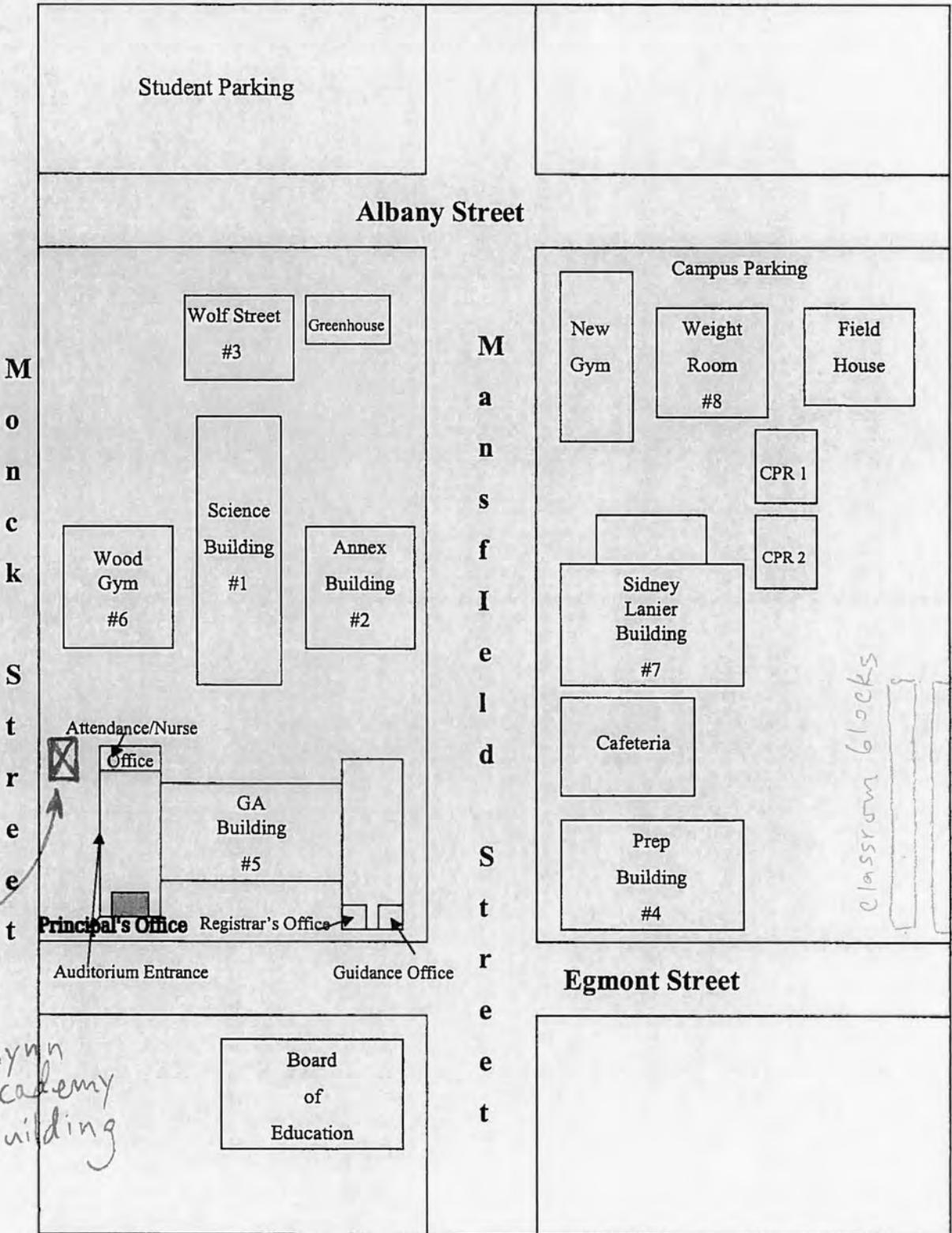
**Glynn Academy (Glynn County)**  
**South Philpot Street Historic District (Polk County)**

Sincerely,



Gretchen Brock  
National Register & Survey Program Manager

(Glynn Academy 2011)



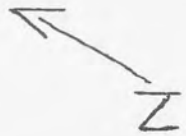
M  
o  
n  
c  
k  
  
S  
t  
r  
e  
e  
t

M  
a  
n  
s  
f  
i  
e  
l  
d  
  
S  
t  
r  
e  
e  
t

Glynn  
Academy  
Building

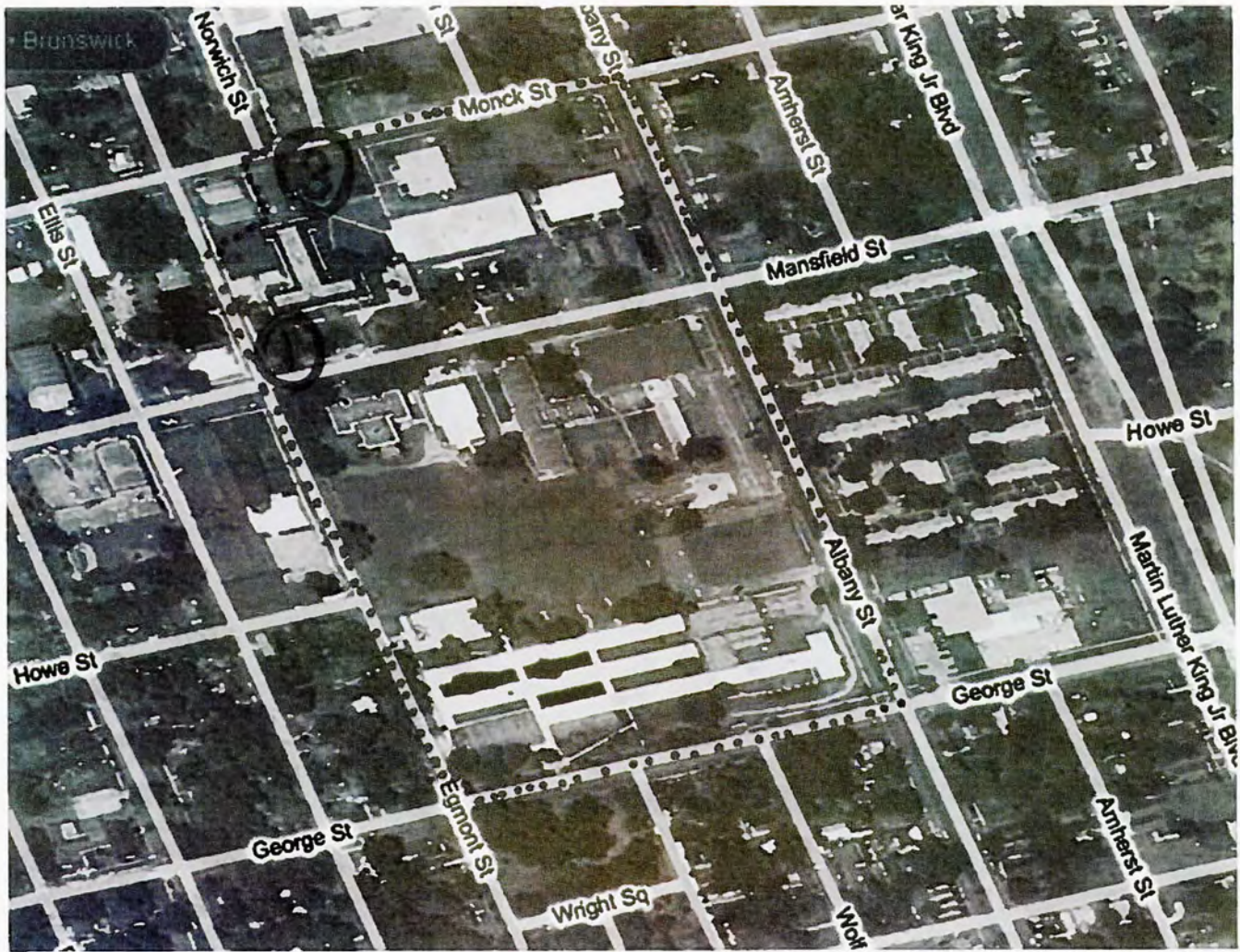
classroom blocks

Not to Scale





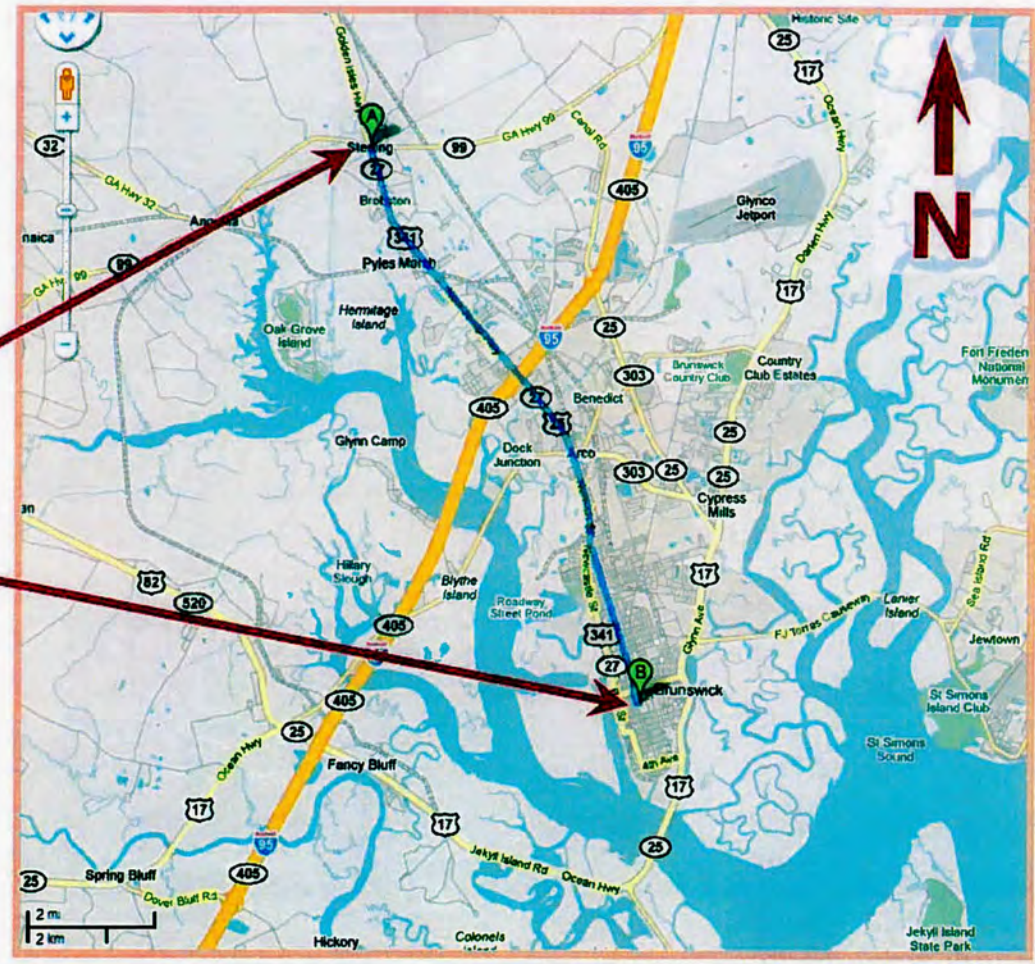
# Glynn Academy



- 1) Glynn Academy original (first) location.
  - 2) Not shown. Second location in Sterling, Ga.
  - 3) Current location.
- ..... indicates bounds of current Glynn Acad.

**Sterling Consolidated School / Historic  
Glynn Academy Building  
Sterling, GA 1915-2008**

**Glynn Academy Building / Historic  
Glynn Academy Building  
Brunswick, GA 1840-1915 / 2008-current**



**Google Map Image  
Brunswick, GA 2009**



**Sterling Consolidated School / Historic Glynn  
Academy Building  
Sterling, GA 1915-2008**

**Google Map Image  
Sterling, GA 2008**