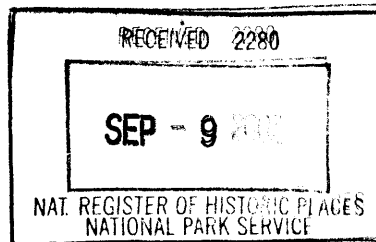


AUG 27 2002

United States Department of the Interior
National Park Service



1223

NATIONAL REGISTER OF HISTORIC PLACES REGISTRATION FORM

This form is for use in nominating or requesting determinations for individual properties and districts. See instructions in How to Complete the National Register of Historic Places Registration Form (National Register Bulletin 16A). Complete each item by marking "x" in the appropriate box or by entering the information requested. If any item does not apply to the property being documented, enter "N/A" for "not applicable." For functions, architectural classification, materials, and areas of significance, enter only categories and subcategories from the instructions. Place additional entries and narrative items on continuation sheets (NPS Form 10-900a). Use a typewriter, word processor, or computer, to complete all items.

1. Name of Property

historic name Jefferson Elementary School

other names/site number

2. Location

street & number 501 North Cherry not for publication N/A
city or town Creston vicinity N/A
state Iowa code IA county Union code 175 zip code 50801

3. State/Federal Agency Certification

As the designated authority under the National Historic Preservation Act of 1966, as amended, I hereby certify that this nomination request for determination of eligibility meets the documentation standards for registering properties in the National Register of Historic Places and meets the procedural and professional requirements set forth in 36 CFR Part 60. In my opinion, the property meets does not meet the National Register Criteria. I recommend that this property be considered significant nationally statewide locally.

(See continuation sheet for additional comments.)

Howell G. Srite

Signature of certifying official

August 28, 2002

Date

STATE HISTORICAL SOCIETY OF IOWA

State or Federal agency and bureau

In my opinion, the property meets does not meet the National Register criteria.

(See continuation sheet for additional comments.)

Signature of commenting or other official

Date

State or Federal agency and bureau

4. National Park Service Certification

I hereby certify that this property is:

- entered in the National Register
 ___ See continuation sheet.
- determined eligible for the National Register
 ___ See continuation sheet.
- determined not eligible for the National Register
- removed from the National Register
- other (explain):

Daniel J. Vivian 10/24/2002

fw _____
Signature of the Keeper

Date of Action

5. Classification

- Ownership of Property**
(Check as many boxes as apply.)
- private
 - public-local
 - public-State
 - public-Federal

- Category of Property**
(Check only one box.)
- building(s)
 - district
 - site
 - structure
 - object

Number of Resources within Property

Contributing	Noncontributing	
<u> 1 </u>	<u> 0 </u>	buildings
<u> </u>	<u> </u>	sites
<u> </u>	<u> </u>	structures
<u> </u>	<u> </u>	objects
<u> 1 </u>	<u> 0 </u>	Total

Number of contributing resources previously listed in the National Register: 0

Name of related multiple property listing (enter "N/A" if property is not part of a multiple property listing):

Public Schools for Iowa: Growth and Change, 1848-1966

6. Function or Use

Historic Functions (enter categories from instructions)

Cat: EDUCATION Sub: School

Current Functions (enter categories from instructions)

Cat: EDUCATION Sub: School

7. Description

Architectural Classification (enter categories from instructions):

Cat: MODERN MOVEMENT Sub: Moderne

Materials (enter categories from instructions):

foundation Concrete

roof Asphalt

walls Brick

other

Narrative Description (Describe the historic and current condition of the property on one or more continuation sheets.)

8. Statement of Significance

Applicable National Register Criteria

(Mark "x" in one or more boxes for the criteria qualifying the property for National Register listing.)

- A Property is associated with events that have made a significant contribution to the broad patterns of our history.
- B Property is associated with the lives of persons significant in our past.
- C Property embodies the distinctive characteristics of a type, period, or method of construction or represents the work of a master, or possesses high artistic values, or represents a significant and distinguishable entity whose components lack individual distinction.
- D Property has yielded, or is likely to yield information important in prehistory or history.

Criteria Considerations

(Mark "x" in all the boxes that apply.)

- A owned by a religious institution or used for religious purposes
- B removed from its original location
- C a birthplace or a grave
- D a cemetery
- E a reconstructed building, object, or structure
- F a commemorative property
- G less than 50 years of age or achieved significance within the past 50 years

Areas of Significance (enter categories from instructions):

Architecture
Social History

Period of Significance

1937-1952

Significant Dates

1937

Significant Person (complete if Criterion B is marked above)

N/A

Cultural Affiliation

Architect/Builder

Dougher, Rich & Woodburn
Hogeson Construction

Narrative Statement of Significance (Explain the significance of the property on one or more continuation sheets.)

9. Major Bibliographical References

(Cite the books, articles, and other sources used in preparing this form on one or more continuation sheets.)

Previous documentation on file (NPS)

- preliminary determination of individual listing (36 CFR 67) has been requested.
- previously listed in the National Register
- previously determined eligible by the National Register
- designated a National Historic Landmark
- recorded by Historic American Buildings Survey #
- recorded by Historic American Engineering Record #

Primary Location of Additional Data

- State Historic Preservation Office
- Other State agency
- Federal agency
- Local government
- University
- Other

Name of repository

10. Geographical Data

Acreage of Property: Less than one acre

UTM References (Place additional UTM references on a continuation sheet)

	Zone	Easting	Northing	Zone	Easting	Northing
1	<u>15</u>	<u>386041.826</u>	<u>4546354.303</u>	3	<u> </u>	<u> </u>
2	<u> </u>	<u> </u>	<u> </u>	4	<u> </u>	<u> </u>

See continuation sheet.

Verbal Boundary Description (Describe the boundaries of the property on a continuation sheet.)

Boundary Justification (Explain why the boundaries were selected on a continuation sheet.)

11. Form Prepared By

name/title Peggy Beedle, Architectural Historian

organization The Louis Berger Group, Inc. date 7/24/02

street & number 950 50th Street telephone 319-373-3043

city or town Marion state Iowa zip code 52302

Additional Documentation

(Submit the following items with the completed form.)

Continuation Sheets

Maps: A USGS map (7.5 or 15 minute series) indicating the property's location.

A sketch map for historic districts and properties having large acreage or numerous resources.

Photographs: Representative black and white photographs of the property.

Additional items (check with the SHPO or FPO for any additional items)

Property Owner

(Complete this item at the request of the SHPO or FPO.)

name Creston Community School District

street & number 619 Maple Street telephone 515-782-7028

city or town Creston state Iowa zip code 50801

Paperwork Reduction Act Statement: This information is being collected for applications to the National Register of Historic Places to nominate properties for listing or determine eligibility for listing, to list properties, and to amend existing listings. Response to this request is required to obtain a benefit in accordance with the National Historic Preservation Act, as amended (16 U.S.C. 470 et seq.).

Estimated Burden Statement: Public reporting burden for this form is estimated to average 18.1 hours per response including the time for reviewing instructions, gathering and maintaining data, and completing and reviewing the form. Direct comments regarding this burden estimate or any aspect of this form to the Chief, Administrative Services Division, National Park Service, P.O. Box 37127, Washington, DC 20013-7127; and the Office of Management and Budget, Paperwork Reductions Project (1024-0018), Washington, DC 20503.

United States Department of the Interior
National Park Service

NATIONAL REGISTER OF HISTORIC PLACES CONTINUATION SHEET

Section 7 Page 1

name of property: Jefferson Elementary School
county, state: Union County, Iowa

DESCRIPTION SUMMARY

The Jefferson Elementary School was constructed in 1937, and designed by the Des Moines architectural firm of Dougher, Rich & Woodburn in the Moderne style. The Jefferson Elementary School is located on the northeast corner of Cherry and Summit streets, in a working class residential area in Creston, Iowa. The front facade, which is shaded by mature trees, faces Cherry Street, with the playground in the back. The immediate neighborhood contains 1930s style bungalows. Three streets south and west is an older neighborhood of four-square houses. To the north is a more modern area, of primarily ranch houses. A commercial/industrial area is to the east.

GENERAL DESCRIPTION

The school, two stories in height, and set on a basement, is of steel-reinforced concrete and load-bearing brick construction. It has a flat roof. There have been no additions and there are no outbuildings. Above ground, it is finished with multi-colored light brown brick in common bond. It is accentuated with limestone, including belt-courses and copings. Two limestone belt-courses form continuous lintels and sills for the first and second story windows. The second story sill becomes the roof line on the curved walls of the balconies on the south and west elevations. Most of the exterior metal-framed windows are original. The windows in the community room have been boarded over. The one-over-one light, double-hung windows, with a fixed transom and lower light, are set in blocks of five.

The asymmetrical, west-facing front facade of the school faces Cherry Street and is composed of the community room section, and a recessed classroom section, which are joined with a semi-circular front entrance. The entrance into the school is composed of a tripartite door, with three-light transoms above, and flanking narrow windows. Perpendicular to the school doorway is the entry into the community room, which is composed of a double door with three-light transoms. Above the balcony, the name "Jefferson" is inscribed in stone on the south elevation.

The south facade faces Summit Street and is adorned with a one-story semi-circular wall, which delineates the kindergarten room, while the rest of the facade is composed of the window blocks of classrooms. The fenestration pattern is intact and the windows are original. The east elevation, which faces the playground, is composed of classrooms, and the mechanical system wing on the northern end. The two are separated by a large brick chimney with rounded corners accented with limestone. The fenestration pattern is intact and the windows are original. The north-facing elevation is composed of the mechanical plant and auditorium stage, therefore there are no windows in that section.

The interior layout consists of a central corridor, with classrooms on either side. The community room is in the northwest corner, and the kindergarten room on the south end. The Jefferson Elementary School has retained most of its original finishes. The asphalt tile floors, walls, windows and ceiling tiles are original. The lights are replacements.

United States Department of the Interior
National Park Service

**NATIONAL REGISTER OF HISTORIC PLACES
CONTINUATION SHEET**

Section 7 Page 2

name of property: Jefferson Elementary School
county, state: Union County, Iowa

The classrooms have the original red and green asphalt tile floors, plaster walls with crown moldings and a picture rail over the blackboards. The kindergarten room is larger than the other classrooms; the semi-circular south wall allows for extra space. On the east interior wall, there is a circular cloak room; the stairs to the second floor curve around this wall.

United States Department of the Interior
National Park Service

**NATIONAL REGISTER OF HISTORIC PLACES
CONTINUATION SHEET**

Section 8 Page 3

name of property: Jefferson Elementary School
county, state: Union County, Iowa

SIGNIFICANCE SUMMARY

Jefferson Elementary School is locally significant under Criterion A as an example of a PWA school, and is also locally significant under Criterion C, as an excellent example of a Moderne school. Evaluation of the Jefferson Elementary School for National Register eligibility is based upon criteria outlined in the Multiple Property Documentation Form *Public Schools for Iowa: Growth and Change, 1848-1966* (Beedle and Deiber 2002), under the property type "Elementary School." It is typical of a modern elementary school, with its large kindergarten room, and facilities for community use. Funding from the Public Works Administration allowed many communities to construct public buildings during the Depression. The school retains its integrity of location, setting, design, workmanship, materials, feeling and association.

RESOURCE HISTORY AND HISTORIC CONTEXT

The first Jefferson School on this site opened in the 1880s. By the 1920s the building was overcrowded and lacked the facilities of a modern elementary school. The new Jefferson School was constructed with PWA funds, and was completed at a cost of \$74,629. It was considered a state of the art school at its opening, with fire-resistive construction, asphalt-tiled floors, and photoelectric lights.

The architectural firm of Dougher, Rich & Woodburn was formed in the mid-1920s. Both James A. Dougher and Herbert E. Rich had previously worked for the firm of Proudfoot and Bird. They designed several county courthouses in the 1930s, in the American modern style. The firm was dissolved on the death of Rich in 1950.

The community room was constructed to be a combined gymnasium and auditorium. The windows have been covered, and the stage converted into a library. It is still used as a gymnasium and cafeteria. In the 1950s students were bussed to another school for lunch; now the meals are delivered to the school.

In 1985 the Creston school system was reorganized, and Jefferson became a third-grade school.

United States Department of the Interior
National Park Service

**NATIONAL REGISTER OF HISTORIC PLACES
CONTINUATION SHEET**

Section 9 Page 4

name of property: Jefferson Elementary School
county, state: Union County, Iowa

MAJOR BIBLIOGRAPHICAL REFERENCES

Creston News Advertiser

1937 "Jefferson Will Open Nov. 8" *Creston News Advertiser* October 27, 1937, p. 1.

1937 "To Lay Stone for Jefferson School Friday" *Creston News Advertiser* April 7, 1937, p. 1.

United States Department of the Interior
National Park Service

**NATIONAL REGISTER OF HISTORIC PLACES
CONTINUATION SHEET**

Section 10

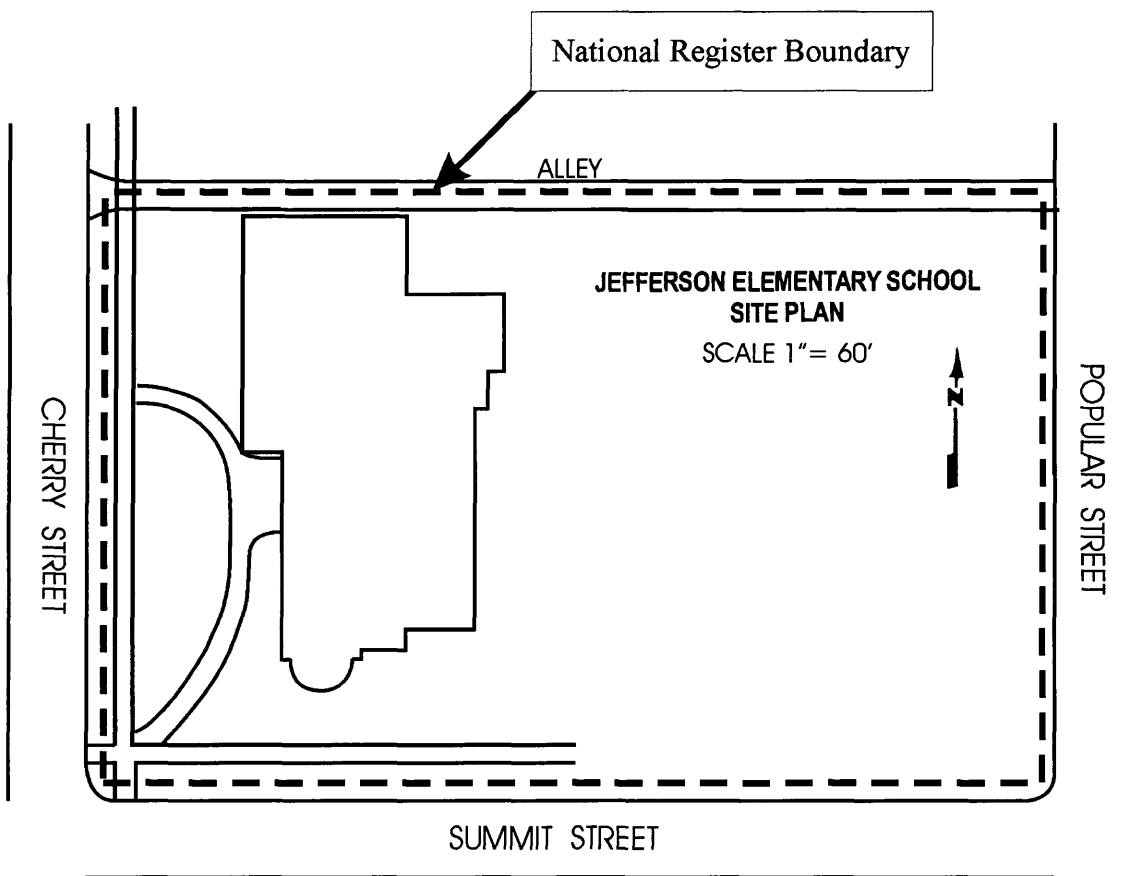
Page 5

name of property: Jefferson Elementary School
county, state: Union County, Iowa

GEOGRAPHICAL DATA

Verbal Boundary Description

The proposed boundary for the Jefferson School includes the main block of the school and the open space associated with the school. The boundary consists of Summit Street to the south, North Poplar Street on the east, the alleyway between Summit and Irving streets on the north, and Cherry Street on the west.



Boundary Justification

The proposed boundary includes the school and its associated open space that contribute to the setting of the architecturally significant resource. This includes all the historic features of the property but does not exceed the area of significance.

United States Department of the Interior
National Park Service

**NATIONAL REGISTER OF HISTORIC PLACES
CONTINUATION SHEET**

Section Photos Page 6 name of property: Jefferson Elementary School
county, state: Union County, Iowa

The following items apply to all photographs:

Property Name: Jefferson Elementary School

Location: Creston, Union County, Iowa

Photographer: Peggy Beedle

Date of Photographs: 2002

Location of Negatives: The State Historical Society of Iowa, Community Programs Bureau, 600 E. Locust, Des Moines, Iowa.

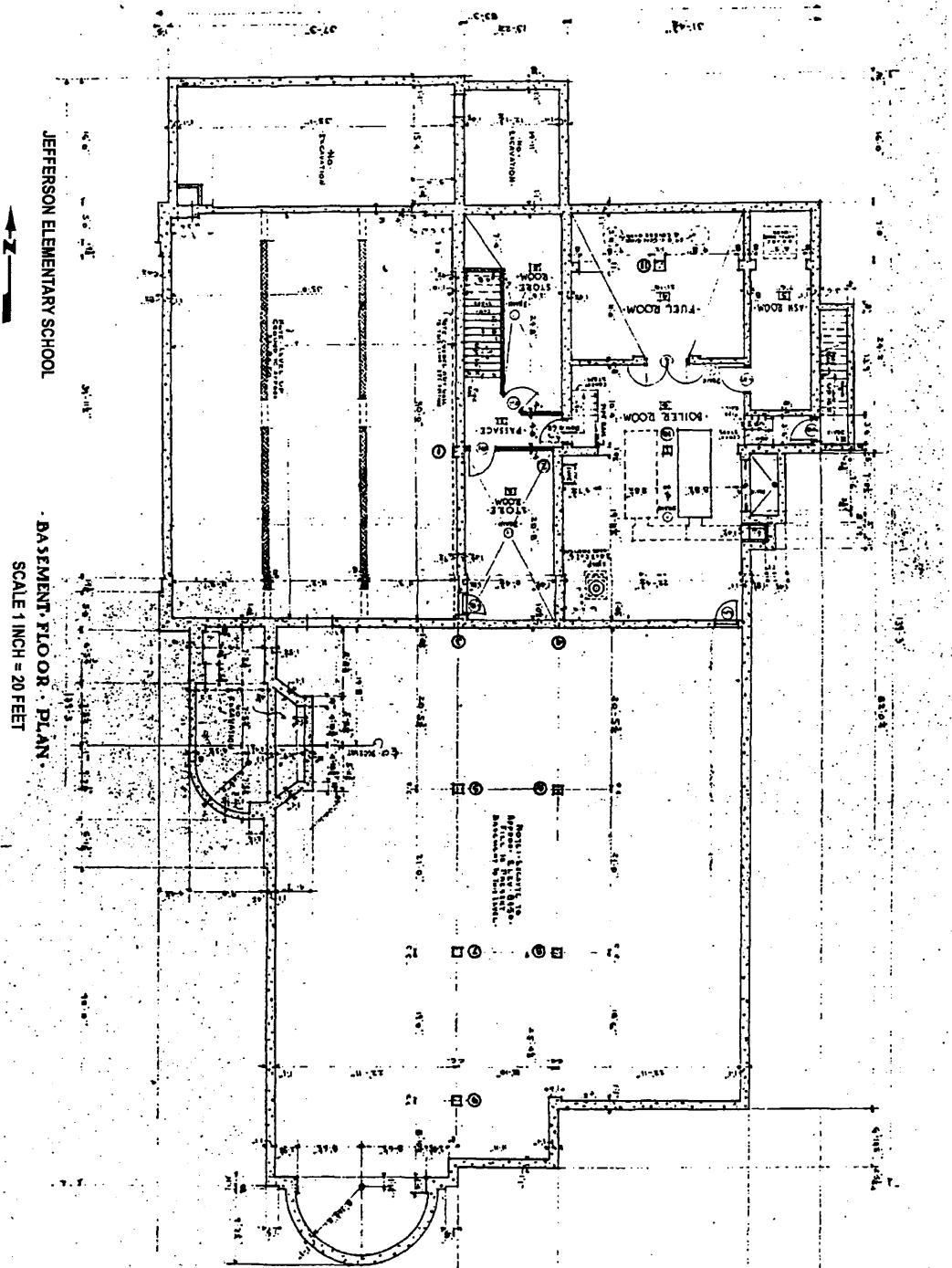
Individual Photograph Identifications:

1. West elevation, facing northeast
2. Entrance, facing northeast
3. Southwest corner, facing east
4. South and east elevations, facing northwest
5. East and north elevations, facing southwest
6. North and west elevations, facing southeast
7. Hallway, facing southwest
8. Classroom, facing southwest
9. Kindergarten, facing southwest
10. Kindergarten, facing southeast

United States Department of the Interior
National Park Service

**NATIONAL REGISTER OF HISTORIC PLACES
CONTINUATION SHEET**

Section Floor Plans Page 7 name of property: Jefferson Elementary School
county, state: Union County, Iowa

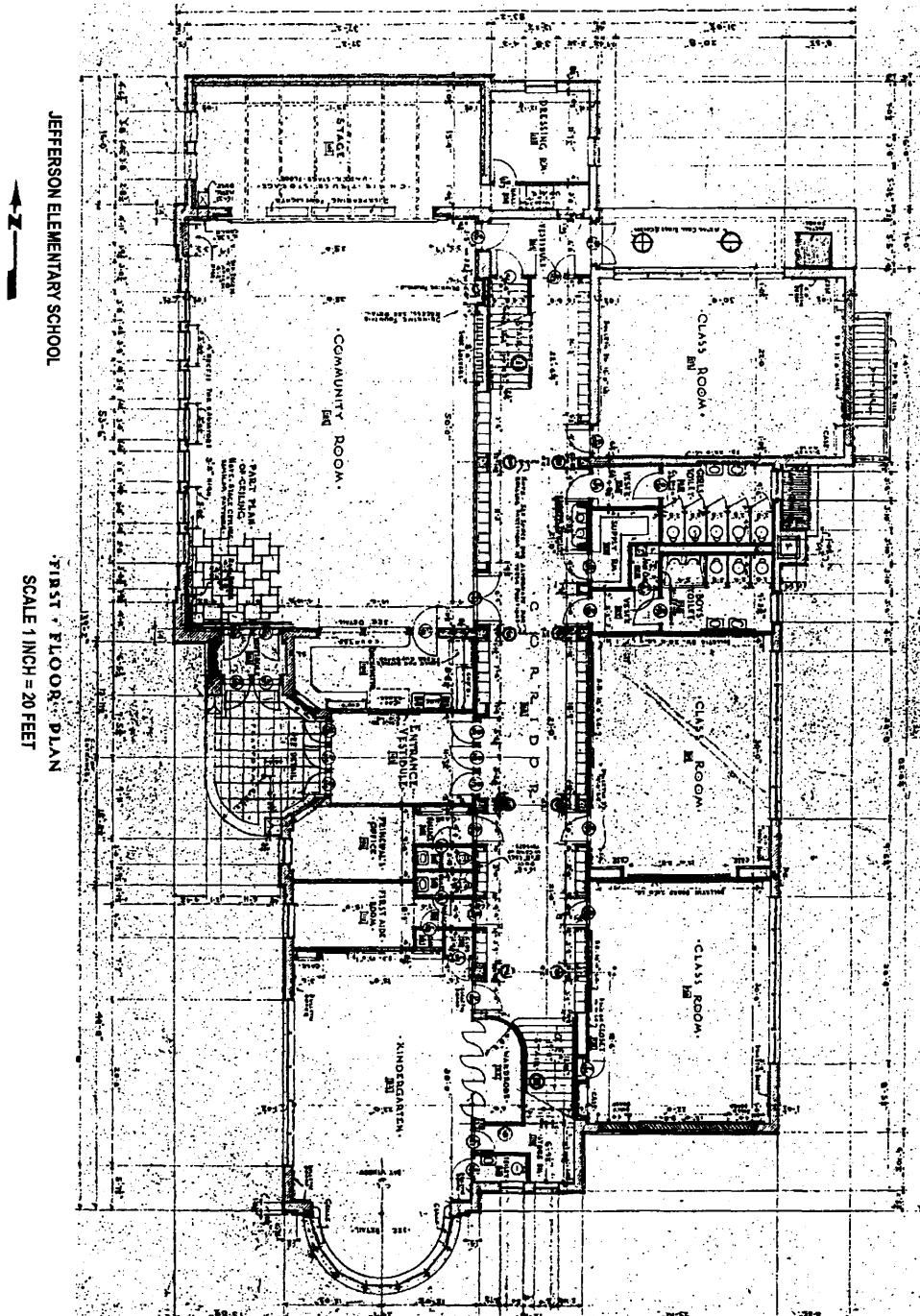


Main Office, Jefferson Elementary School, Creston, Iowa, January 2002.

United States Department of the Interior
National Park Service

**NATIONAL REGISTER OF HISTORIC PLACES
CONTINUATION SHEET**

Section Floor Plans Page 8 name of property: Jefferson Elementary School
county, state: Union County, Iowa



Main Office, Jefferson Elementary School, Creston, Iowa, January 2002.

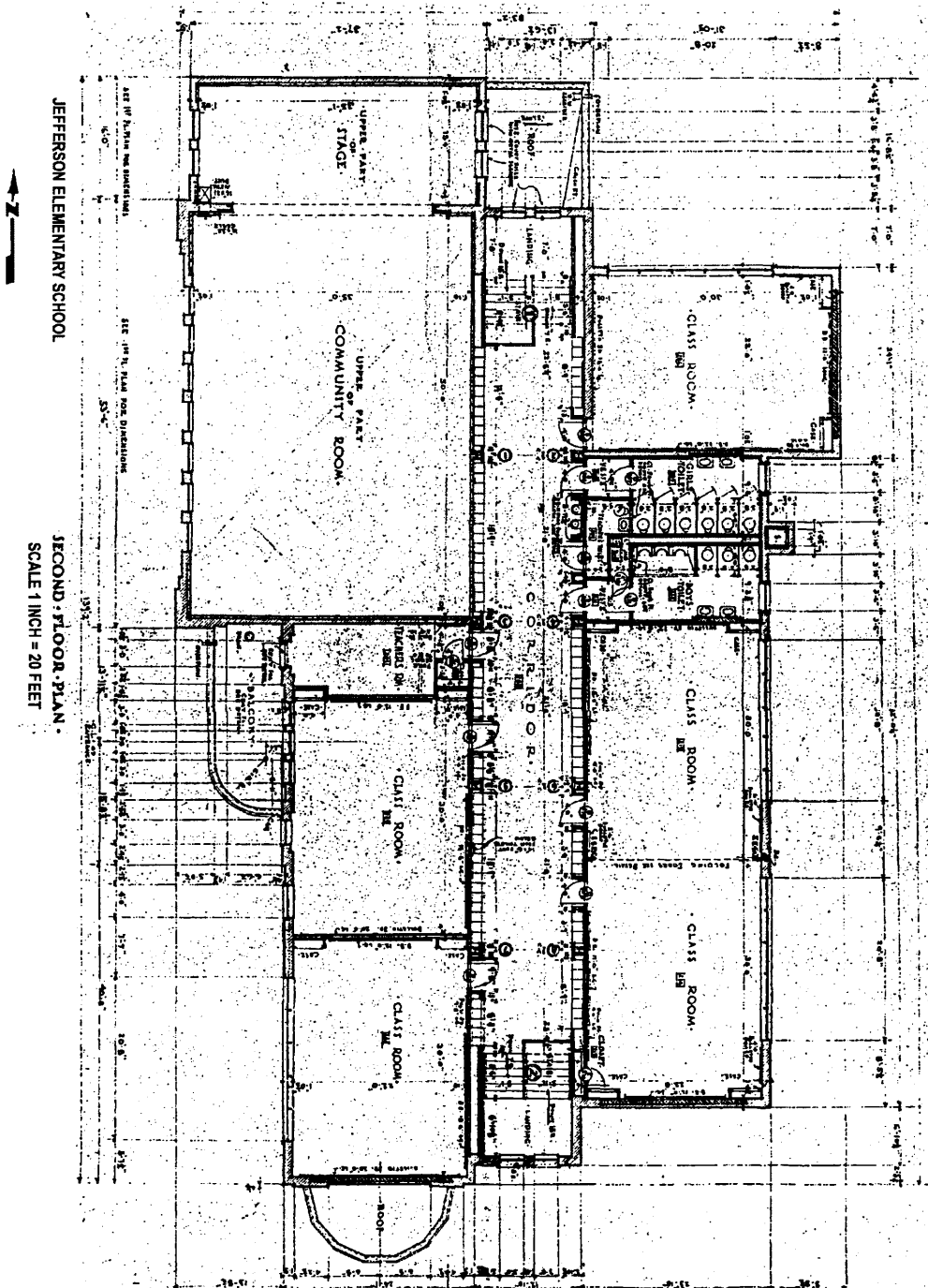
United States Department of the Interior
National Park Service

**NATIONAL REGISTER OF HISTORIC PLACES
CONTINUATION SHEET**

Section Floor Plans

Page 9

name of property: Jefferson Elementary School
county, state: Union County, Iowa



Main Office, Jefferson Elementary School, Creston, Iowa, January 2002.

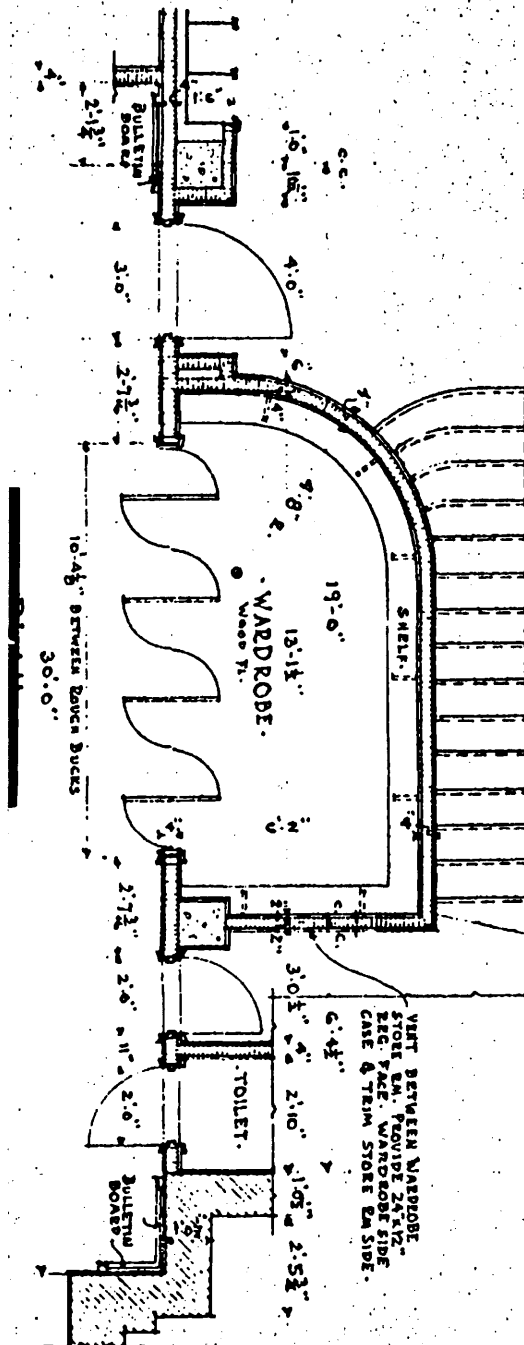
United States Department of the Interior
National Park Service

NATIONAL REGISTER OF HISTORIC PLACES CONTINUATION SHEET

Section Floor Plans

Page 10

name of property: Jefferson Elementary School
county, state: Union County, Iowa



Main Office, Jefferson Elementary School, Creston, Iowa, January 2002.